



**wildearth-travel.com**

**info@wildearth-travel.com**

## 17 DAYS LUXURY ARCTIC CRUISE - NUUK TO IQALUIT

Discover the majestic sights of the Arctic Circle while exploring the islands of Greenland and Canada. Encounter fractured sea ice, towering turquoise glaciers, and sharp cliffs that provide sanctuary to diverse wildlife. Silversea's experts reveal the wonders of life at this latitude, guiding you on Zodiac adventures to spot iconic Arctic wildlife - including bears, seals, and lounging walruses. Observe swirling bird colonies and whales breaching icy waters.



### ITINERARY

Days 0 - 1 - Pre Cruise & Nuuk (Godthab)

- \_ \*\*Pre Cruise Benefits\*\* \_
- \_ \*\*Private Executive Transfers\*\* \_
- \_ \*\*International flights - Economy class\*\* \_
- \_ \*\*or Business Class upgrade\*\* \_
- \_ \*\*Airport transfers\*\* \_



\_ \*\*Hotel\*\* \_  
\_ \*\*Charter/Group flights\*\* \_

In the bustling capital city of Greenland, you could be forgiven for forgetting you are in such a vast and isolated country. Nuuk is Greenland's economic and social hub, home to more than a third of Greenland's population, and although it feels like a world capital, scratch the surface, and a uniquely Greenlandic character can be found underneath. Nuuk Cathedral overlooks the gorgeous old Colonial Harbour district and the Greenland National Museum, resting place of the legendary Qilakitsoq mummies, the true highlight of the museum's archaeological collection. Above the Colonial Harbour sits downtown Nuuk, with lines of Scandistyle apartments, a bustling shopping district, the Greenlandic Parliament, Nuuk City Hall (which welcomes visitors to see its artwork) and even outdoor cafes selling locally produced food and beer. These nods to modernity compete for space with local artisan boutiques, the meat market selling the catch from Nuuk's vast fjord-lands, and the stunning Katuaq Cultural Centre, where blockbuster movies, as well as local and foreign performers entertain the people of Nuuk. Although Nuuk has long been a melting pot of Danish and Greenlandic ideas, this is a city where Greenland displays its sophistication, with the Country's only traffic lights, roundabouts and University. Most of all, expect to find a multitude of friendly people who are proud of who they are, and equally proud of the city they call home.

#### Day 2 - Evighedsfjord

Evighedsfjord (Eternity Fjord) is a large fjord northeast of Kangaamiut in southwest Greenland. The fjord has a length of 75 kilometers and several branches with numerous glaciers coming down from the Maniitsoq Ice Cap to the north can be seen. The Evighedsfjord has several bends and whenever the ship reaches the supposed end the fjord continues in another direction and seems to go on forever. Qingua Kujatdleq Glacier is at its southeastern end. At the northwestern end a U-shaped valley has seven glaciers coming down from the mountains but not reaching the water. The glaciers had their maximum extent around the year 1870 and have gone through several cycles of advance and retreat. The mountains on either side of the fjord can reach in excess of 2,000 meters and the fjord has a depth of up to 700 meters. Evighedsfjord's snowline is at 1,100 meters and the Evighedsfjord region is famous as one of Greenland's best heli-skiing areas.

#### Day 3 - Itilleq, Disko Island

#### Day 4 - Equip Sermia Glacier

#### Day 5 - Ilulissat

Known as the birthplace of icebergs, the Ilulissat Icefjord produces nearly 20 million tons of ice each day. In fact, the word Ilulissat means "icebergs" in the Kalaallisut language. The town of Ilulissat is known for its long periods of calm and settled weather, but the climate tends to be cold due to its proximity to the fjord. Approximately 4,500 people live in Ilulissat, the third-largest town in Greenland after Nuuk and Sisimiut. Some people here estimate that there are nearly as many sled dogs as human beings living in the town that also boasts a local history museum located in the former home of Greenlandic folk hero and famed polar explorer Knud Rasmussen.

#### Day 6 - Day at sea

Days at sea are the perfect opportunity to relax, unwind and catch up with what you've been meaning to do. So whether that is going to the gym, visiting the spa, whale watching, catching up on your reading or simply topping up your tan, these blue sea days are the perfect balance to busy days spent exploring shore side.

#### Day 7 - Qikiqtarjuaq, nunavut

Sitting above the Arctic Circle, visit a land of wonderful extremes, where polar bears roam and the vastness of scenery is all-encompassing. Taking its name from the Inuktitut word for Big Island - Qikiqtarjuaq, is a place of long, summer nights that feel eternal, and contrast with the inky depths of winter. These blackened nights are illuminated by the ethereal glow of the Northern lights dancing over huge mountain peaks. A small community resides in this remote and wonderful setting, on the sheltered western shore of Broughton Island, separated from Baffin Island by a relatively narrow channel. Across this gap, the majestic, staggeringly tall mountains of Auyuittuq National Park rise. These are some of the continent's most spectacular peaks, of poetic form and grandeur. The icy waters surrounding Qikiqtarjuaq are strewn with icebergs beginning long journeys, earning the island its title as Nunavut's 'Iceberg Capital'. While ice floes drift serenely on the surface, giants move in the depths - and the waters are visited by wildlife such as narwhals, bowhead whales, seals and orcas. The skies above, meanwhile, are often alive with





**wildearth-travel.com**

**info@wildearth-travel.com**

seabirds, particularly the Northern Fulmar. Cruise along the beautiful shoreline and take to Zodiacs for a deeper level of exploration, seeking out the wonderful wildlife of the region with our expert team on hand to identify the animals and share their fascinating insights into this wonderful region.

#### Day 8 - Auyuittuq National Park

Located at the heart of Nunavut, on Baffin Island's Cumberland Peninsula, Auyuittuq National Park offers you one of the most beautiful and striking landscapes in Canada. Large valleys and steep-walled fjords surrounded by a skyline of irregular peaks and massive glaciers, exactly how you would picture the Arctic.

Auyuittuq homes little vegetation, however, you can however spot some arctic wildlife species in these stunning and serene landscapes. Arctic foxes, caribou, lemmings, snow geese, ermines, but also polar bears and many bird species like peregrine falcons can be observed. Several cetaceans species frequent the surrounding waters of the island, narwhals, beluga whales and orcas being the most likely to be seen. The coasts of the island are a haven for many seabirds like the king eider or the little auk.

Established a national park in 1972, Auyuittuq holds an extremely important place in Canada's history due to its location. Many civilisations visited Auyuittuq since the first people settled during the Stone Age, noting the ideal conditions for whaling. Among them, Norse and English explorers but also the Inuit, a people that left his mark on the island and all the Nunavut region. Auyuittuq means "The Land That Never Melts" in Inuktitut, the national park's land being covered by the huge Penny Ice Glacier.

#### Day 9 - Cape Dyer, Nunavut

Cape Dyer is a remote wilderness and lies at the southeast tip of Canada's vast Baffin Island. It is located north of the Arctic Circle in the Canadian territory of Nunavut. Terraced cliffs rise up out of the icy sea as you sail close to land and there is a smattering of the purest white snow-capped mountains in the distance. Baffin Island is the largest island in Canada with a vast rugged landscape which measures 507,451 square kilometers (195,928 square miles). It is the fifth largest island in the world. If you're lucky you might just spot one of the Polar bears which populate the island. Other animals which roam these cold lands include Arctic foxes, Caribou and Arctic hares. Seals and walrus can be seen hauled-out or close to shore in the water. Keep a look out for whales in the sea around Baffin Island, there are four species for

eagle eyed nature watchers to spot - Narwhals, Orca, Beluga and Bowhead.

#### Day 10 - Blacklead Island

#### Day 11 - Lady Franklin Island

Named in honour of Sir John Franklin's widow, the lonely and uninhabited Lady Franklin Island lies off of Baffin Island's Hall Peninsula at the entrance to Cumberland Sound. The island is named for the wife of Sir John Franklin, the Arctic explorer who died trying to discover the Northwest Passage. The geology of the island is striking with vertical cliffs of Archean rocks, likely to be some of the oldest stone in Canada. The waters around Lady Franklin Island offer an abundance seabirds, ducks, seals, and walrus. With a bit of luck it is possible to see Atlantic Puffins here and perhaps even a rare Sabine's Gull.

#### Day 11 - Monumental Island

Monumental Island is a splinter of ancient metamorphic rock, hunching in the frigid waters of the Davis Strait, defying the ocean and ice around it. Named to honour the legendary Polar Explorer Sir John Franklin, the island displays at times displays everything Nunavut has to offer, in an ocean studded with vast icebergs drifting across from Greenland. Monumental Island is a well known den site for polar bears, the icon of the Arctic; there is a good chance to see mother bears with cubs on the island, as the bears become trapped by the lack of summer ice, using the island as a base to hunt until the ice returns in the Autumn. Seeing the white silhouette of a polar bear against the ancient black rock and autumn tundra colours is an experience that will remain long after returning on board. Groups of harp seals are a common sight in the waters around Monumental Island, and can be very curious, often swimming very close to investigate new objects such as boats. There are several sites on the island also used as haul out sites for the charismatic Atlantic Walrus. These vast animals are surprisingly gentle and skittish, and can often be observed caring for their calves on the rock bluffs while keeping a careful watch for polar bears. Almost nowhere else in Nunavut can the charismatic wildlife of the Arctic be observed in such a stunning setting.

#### Day 12 - High Bluff Island

#### Day 13 - Akpatok Island - North



## Day 14 - Lower Savage Islands

The Lower Savage Islands are a small group of islands off of the southeastern tip of Baffin Island, and a common location for polar bears to be found during the summer months. With plenty of land to roam while giving each other a wide berth, plus opportunities to feed, it seems perhaps bears can be found here as the ice vanishes with the summer season's warming temperatures.

## Day 15 - Iqaluit (Nunavut)

Iqaluit is the capital of Canada's newest territory, Nunavut, which is Inuktitut for "our land". The community is located at the head of Frobisher Bay, an inlet of the North Atlantic extending into southeastern Baffin Island. The Bay is so long that it was first taken to be the possible entrance of a Northwest Passage. In Iqaluit, the Nunatta Sunakkutaangit Museum and the Nunavut Legislative Assembly Building both house incredible collections of Inuit artwork with interesting local prints for sale in the museum shop.

## Day 16 - Post Cruise

- \_ **\*\*Post Cruise Benefits\*\*** \_
- \_ **\*\*Charter/Group flights\*\*** \_
- \_ **\*\*Hotel\*\*** \_
- \_ **\*\*Airport transfers\*\*** \_
- \_ **\*\*International flights - Economy class\*\*** \_
- \_ **\*\*or Business Class upgrade\*\*** \_
- \_ **\*\*Private Executive Transfers\*\*** \_

Please note:

Itineraries are subject to change.

# Wild Earth Travel

*Small Ships, Big Adventures*

**wildearth-travel.com**

**info@wildearth-travel.com**

## YOUR SHIP: SILVER WIND

<b>YOUR SHIP:</b>	<b>Silver Wind</b>
<b>VESSEL TYPE:</b>	<b>Small Luxury Cruise Ship</b>
<b>LENGTH:</b>	<b>156.7 metres</b>
<b>PASSENGER CAPACITY:</b>	<b>274</b>
<b>BUILT/REFURBISHED:</b>	<b>1995 / Refurbished</b>

A major upgrade in December 2018 saw Silver Wind looking better than ever. A second refurbishment in summer 2021 will see her benefitting from a strengthened to ice-class hull and will make her one of the most adaptable ships in our fleet. Still timelessly elegant, still luxuriously relaxed, her improved cruising versatility means she is able to whizz from the Polar Regions at the ends of the earth to the iconic ports of the Mediterranean with fluid ease. So whether you want to get up close and personal to penguins in Antarctica or laze on the golden sands of the Caribbean, get ready for a wealth of diverse destination experiences, in traditional Silversea comfort.

### Dining

**The Grill.** Soft breezes and ocean views beckon at the Grill, especially as the sun goes down when cruise guests gather for cocktails at the outdoor bar and talk about the day's events.

**La Terrazza.** Authentic Italian recipes and the freshest, sustainable ingredients come together in this restaurant at sea.

**The Restaurant.** Enjoy Continental and regional specialities, as well as sweeping ocean views in our main dining room.

**La Dame.** La Dame features a menu of seasonally inspired dishes prepared with the freshest locally sourced ingredients.

### Public Areas

**Pool Deck.** Chaise lounges arranged in the sun or shade. Bubbling whirlpools. The pool water refreshing in warmer climates, heated for cooler weather.

**Reception.** Be sure to visit the Reception area, where our experts can provide invaluable information to help you get the most out of your cruise.

**Fitness Centre.** The Fitness Centre offers world-class equipment, classes, and personalized services.

**Connoisseur's Corner.** If you appreciate good cognac or premium cigars, be sure to visit the Connoisseur's Corner to see the ship's exceptional selection.

**Boutique.** There is a wealth of luxury shopping experiences aboard all Silversea ships, featuring the most distinctive and appealing brands from across the globe.

**The Show Lounge.** Applaud a broad spectrum of entertainment -- from full-scale production shows and classical soloists, to cultural entertainment and feature films.

**Panorama Lounge.** Relax and unwind in the Panorama Lounge, a sophisticated yet amicable space offering beautiful ocean views as you enjoy your cruise.

**Zagara Beauty Spa.** Come and indulge in a luxurious spa treatment. Facials, body wraps, massages: the spa is the perfect place to unwind.

**Dolce Vita.** Dolce Vita is the gathering place for our savvy travellers of the world, a place where guests mingle and exchange stories and where new faces become lifelong friends.

**Zagara Beauty Salon.** Maintain your fresh look throughout your

Wild Earth Travel

*Small Ships, Big Adventures*

**0800 945 3327** (within New Zealand) | +64 (0) 3 365 1355 | **1800 107 715** (within Australia)

info@wildearth-travel.com | wildearth-travel.com





# Wild Earth Travel

*Small Ships, Big Adventures*

**wildearth-travel.com**

**info@wildearth-travel.com**

luxury cruise at the Zagara Beauty Salon. Services are available for men and women.

Observation Library. The Observation Library boasts exceptional views overlooking the ocean as it stretches out below you while you enjoy your cruise.

Photo Studio. The Photo Studio offers a professional space for budding photographers to retouch, print and display their work.



their work.

Wild Earth Travel  
*Small Ships, Big Adventures*

**0800 945 3327** (within New Zealand) | +64 (0) 3 365 1355 | **1800 107 715** (within Australia)

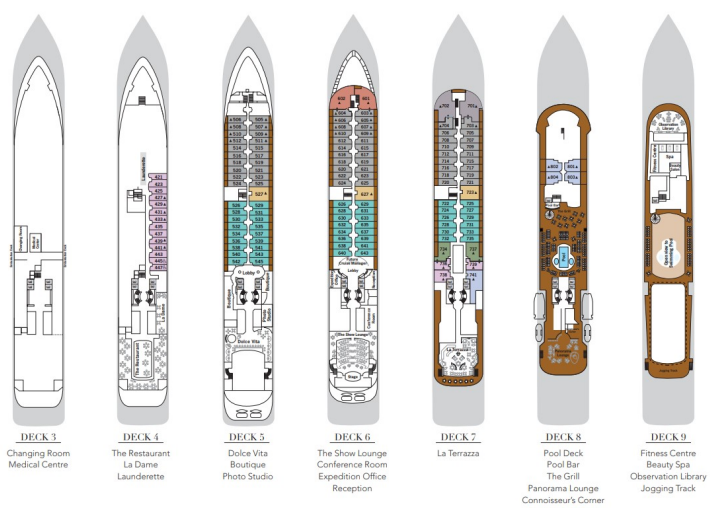
info@wildearth-travel.com | **wildearth-travel.com**



**Wild Earth Travel**  
*Small Ships, Big Adventures*

**wildearth-travel.com      info@wildearth-travel.com**

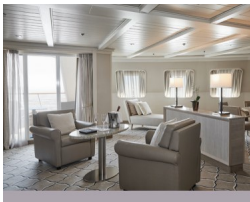
**INSIDE YOUR SHIP**



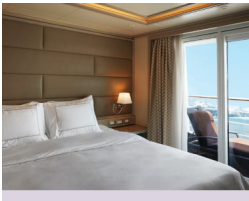
**Grand 1 Bedroom**



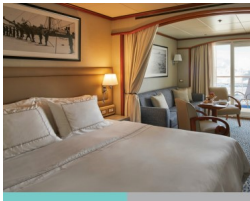
**Grand 2 Bedroom**



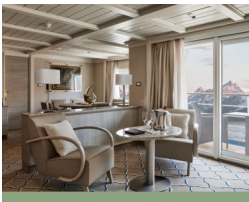
**Medallion**



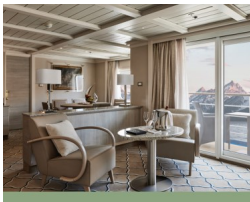
**Midship Veranda**



**Owner 1 Bedroom**



**Owner 2 Bedroom**





# Wild Earth Travel

*Small Ships, Big Adventures*

[wildearth-travel.com](http://wildearth-travel.com)

[info@wildearth-travel.com](mailto:info@wildearth-travel.com)

## PRICING

### 01-Aug-2026 to 17-Aug-2026

Vista	30600 AUD pp
Medallion	58300 AUD pp
Silver	76200 AUD pp
Royal 1 Bedroom	81400 AUD pp
Grand 1 Bedroom	93500 AUD pp
Royal 2 Bedroom	114500 AUD pp
Owner 1 Bedroom	120800 AUD pp
Grand 2 Bedroom	126600 AUD pp
Owner 2 Bedroom	148300 AUD pp
Veranda	0 pp
Midship Veranda	0 pp

Vista	30600 AUD pp
Medallion	58300 AUD pp
Silver	76200 AUD pp
Royal 1 Bedroom	81400 AUD pp
Grand 1 Bedroom	93500 AUD pp
Royal 2 Bedroom	114500 AUD pp
Owner 1 Bedroom	120800 AUD pp
Grand 2 Bedroom	126600 AUD pp
Owner 2 Bedroom	148300 AUD pp
Veranda	0 pp
Midship Veranda	0 pp

### 15-Aug-2026 to 31-Aug-2026

Vista	30600 AUD pp
Medallion	58300 AUD pp
Silver	76200 AUD pp
Royal 1 Bedroom	81400 AUD pp
Grand 1 Bedroom	93500 AUD pp
Royal 2 Bedroom	114500 AUD pp
Owner 1 Bedroom	120800 AUD pp
Grand 2 Bedroom	126600 AUD pp
Owner 2 Bedroom	148300 AUD pp
Veranda	0 pp
Midship Veranda	0 pp

### 29-Aug-2026 to 14-Sep-2026

Wild Earth Travel  
*Small Ships, Big Adventures*

0800 945 3327 (within New Zealand) | +64 (0) 3 365 1355 | 1800 107 715 (within Australia)

[info@wildearth-travel.com](mailto:info@wildearth-travel.com) | [wildearth-travel.com](http://wildearth-travel.com)