

# Wild Earth Travel

*Small Ships, Big Adventures*

**wildearth-travel.com**

**info@wildearth-travel.com**

## 17 DAYS LUXURY SOUTHEAST ASIA CRUISE - SINGAPORE TO HONG KONG

Cast off the worries of the West and sail East to Vietnam and Thailand. Embark from Singapore and overnight in bustling Bangkok, where ancient shining golden temples beckon amidst the pop-up markets and smiles. Dive into the storied history and incomparable nightlife of Ho Chi Minh City, during a three-day stay. Decompress on Da Nang's famous beaches, explore the hidden grottos and spectacular vistas of Ha Long Bay before arrival in Hong Kong.



### ITINERARY

#### Days 0 - 1 Pre Cruise & Singapore

- \_ **\*\*Pre Cruise Benefits\*\*** \_
- \_ **\*\*Private Executive Transfers\*\*** \_
- \_ **\*\*International flights - Economy class\*\*** \_
- \_ **\*\*or Business Class upgrade\*\*** \_
- \_ **\*\*Airport transfers\*\*** \_

Wild Earth Travel

*Small Ships, Big Adventures*

**0800 945 3327** (within New Zealand) | +64 (0) 3 365 1355 | **1800 107 715** (within Australia)

info@wildearth-travel.com | **wildearth-travel.com**



# Wild Earth Travel

*Small Ships, Big Adventures*

**wildearth-travel.com**

**info@wildearth-travel.com**

— \*\*Hotel\*\* —

Advanced, airy and elevated, Singapore is a spectacular, futuristic vision of utopian city life. A healthy population of almost six million call it home, but this is a city designed with space to breathe, and gorgeous outdoor parks, massive indoor greenhouses and beautiful recreational spaces spread between the City of Gardens' skyscrapers and soaring structures. Once a quiet fishing village, now a glistening island city-state and an international beacon of science, education and technology. Singapore is almost intimidatingly clean - and the hyper-efficient public transport system whips residents and visitors across the city's neighbourhoods in a heartbeat. Glorious fountains and audacious skyscrapers loom up - nodding to traditional feng shui beliefs - and putting on dazzling illuminated displays after dark. The lush green botanical gardens are a spectacular UNESCO World Heritage Site, covering 52 hectares and decorated with impressive colourful orchids. Or breathe in more of the freshest air by heading up to wander the canopy strung bridges of MacRitchie Reservoir Park. Head for the iconic Marina Bay - a landmark of the city crowned by three interconnected towers, which watch out over island sprinkled waters. Jaunt between Little India and the atmospheric Chinatown in minutes, where beautiful temples - like the Chinese Thian Hock Keng Temple and Hindu Sri Mariamman Temple add rich cultural intrigue. Singapore's cuisine is a mouthwatering fusion of its Indian, Chinese, Indonesian, and Malay influences, taking and enhancing the best of each. Enjoy dishes in towering restaurants, or toast the glowing skyline with the city's eponymous gin-soaked cocktail - a Singapore Sling.

## Days 2 - 3 - Day at sea

Days at sea are the perfect opportunity to relax, unwind and catch up with what you've been meaning to do. So whether that is going to the gym, visiting the spa, whale watching, catching up on your reading or simply topping up your tan, these blue sea days are the perfect balance to busy days spent exploring shore side.

## Days 4 - 5 - Bangkok (Laem Chabang)

A voyage of flavour, and an all-out sensory assault, Bangkok is one of the world's most fascinating cities, and a place to plunge right in at the deep end. Immense tradition and relentless modernity combines, and it's these contrasts and collisions that make Bangkok the remarkable, all-encompassing experience it is. One second you can be dodging whizzing hordes of mopeds,

the next, absorbed into the blissful tranquillity of a silent temple courtyard. Ornate towers and places of worship blend in alongside cathedral-like shopping malls and skyscrapers, while the streets hum with bartering from the markets that spill out wherever you walk. Part of Bangkok's allure is that life is well and truly played out on its streets. Stalls of flowers, spices and silk fabrics fill bustling alleyways with colour and exotic fragrances. You can find fine dining hidden away here - including Michelin-starred restaurants - but the real Bangkok is the feast of flavours on street level - where authentic Pad Thai is cooked up alongside spicy papaya salad. To truly know Bangkok you must sail the waters of the Chao Phraya river, which provides a cooling thoroughfare through the city. You'll sail through Bangkok's soul, with glorious temples leaning up against the river's banks, filled with intricately decorated Buddha statues. One of the country's most sacred sites - the Temple of the Emerald Buddha - rises in a river bend, while the beautiful Grand Palace, and the skyscraper-like tower of the colourful Wat Arun temple, also watch out over the water. It's hard to leave the intoxicating fizz of the city behind, but the journey north to Ayutthaya is an incredible voyage, where you can see the extraordinary ruins of the former capital Kingdom of Siam, which was destroyed in 1350.

## Day 6 - Day at sea

Days at sea are the perfect opportunity to relax, unwind and catch up with what you've been meaning to do. So whether that is going to the gym, visiting the spa, whale watching, catching up on your reading or simply topping up your tan, these blue sea days are the perfect balance to busy days spent exploring shore side.

## Days 7 - 9 - Ho Chi Minh City

A chaotic, enchanting swirl of sensory stimulation - Ho Chi Minh City is a place of incense-infused temples, colonial architecture, warm people and delicious street food. Formerly known as Saigon, the city was affectionately-labelled the Pearl of the Orient by the French. Afternoons here drift by lazily on the gentle chaos of the River Saigon, as taxi boats and motor canoes flit up and down, and parks fill out with locals playing jianzi, kicking shuttlecocks back and forth. The French colonial imprint is evidenced in the Saigon Notre Dame Basilica, which stands out with its grand double bell towers and red brick hue. Just across the road, you'll also find the celebrated Ho Chi Minh Post office, which was erroneously credited as a Gustav Eiffel creation. In reality, the architect was another Frenchman, Alfred Foulhoux. The French also caffeinated this city with coffee culture, and a refreshing iced coffee, from the innumerable coffee

Wild Earth Travel

*Small Ships, Big Adventures*

**0800 945 3327** (within New Zealand) | +64 (0) 3 365 1355 | **1800 107 715** (within Australia)

info@wildearth-travel.com | **wildearth-travel.com**



# Wild Earth Travel

*Small Ships, Big Adventures*

**wildearth-travel.com**

**info@wildearth-travel.com**

shops, will perk you up instantly. Taste the street food to get under Ho Chi Minh City's skin, with humble restaurants serving up rich flavours - from the Vietnamese take on the baguette, a banh mi sandwich - to the local staple of pho, a delicious noodle soup. The Tortoise pagoda is a tranquil escape and a serene place of worship for Vietnamese who practice Buddhism and Taoism, while the Vietnamese medical museum has a fascinating collection of remedies and potions - some dating back to Stone Age. Journey out to learn more of the Vietnam War at the Remnants Museum and Cu Chi tunnels. Offering a vivid glimpse of conditions, and the ingenuity and resilience of the soldiers, you'll learn of the guerrilla war campaign waged from within this claustrophobic, 70-mile network of war tunnels.

## Day 10 - Day at sea

Days at sea are the perfect opportunity to relax, unwind and catch up with what you've been meaning to do. So whether that is going to the gym, visiting the spa, whale watching, catching up on your reading or simply topping up your tan, these blue sea days are the perfect balance to busy days spent exploring shore side.

## Day 11 - Da Nang

Halfway between Ho Chi Minh City and Hoi An, Da Nang often gets overlooked on the traveller trail. However, as the third largest city in Vietnam (with a population of 1 million), Da Nang packs a punch that other puts other Vietnamese cities in the shade. Naturally, Da Nang is a savvy choice. The beaches are simply stunning - white sand that runs on for miles, lapped by sapphire seas and punctuated by tall coconut trees. The mountains are stunning - vast swathes of emerald green poking out of the top of the few skyscrapers the city has. And the temples are vast and plentiful. From Lady Buddha - an 18th century shrine and statue that guards over the fishermen - to the Marble Mountains, Da Nang is a sublime mixture of secret lagoons, spiritual sites and Vietnamese energy. The aforementioned Marble Mountains are undeniably the city's main attraction, although the Golden Hands Bridge (40 kilometres from the city centre) is fast overtaking the Mountains for top spot. Both are sublime in their beauty - one a spiritual pilgrimage site sculpted by (and named after) the elements, the other, a man-made structure of two giant concrete hands that stretch towards the sky. Add to that the busy markets selling everything from Vietnamese silk to street food and the My Son temple ruins (Vietnam's answer to Angkor Wat) and you have a destination that offers travellers far more than tourist trinkets. If you are looking for a Vietnamese city that offers both connection and authenticity, you have found it

in Da Nang.

## Day 12 - Day at sea

Days at sea are the perfect opportunity to relax, unwind and catch up with what you've been meaning to do. So whether that is going to the gym, visiting the spa, whale watching, catching up on your reading or simply topping up your tan, these blue sea days are the perfect balance to busy days spent exploring shore side.

## Day 13 - Ha Long Bay

The extraordinary, mossy limestone mountains that rear from the waters of Ha Long Bay form one of the most spectacular natural landscapes on the planet. At least 1,600 green islands rise over a flotilla of strung-together fishing boats and floating villages. Spectacular at any time, sunset bathes the remarkable limestone formations in warm, honey-coloured light, adding an extra layer to the seascape's heart-stirring beauty. Emerald green sea washes around this immense network of islands and limestone outcrops, which you can explore at leisure on junk boats and by sea kayak. Local legend says the islands were formed when a dragon descended, spitting fire and emerald and jade jewels across the water to deter invaders. The sheer scale points to the supernatural - but scientists stubbornly maintain that this collection of towering sculptures was the result of various forms of erosion and a flood of seawater following the ice age. The water continues to chip away at the islands, and you can venture into the mouths of caves hollowed out by the relentless wash of the waves. Dau Go Cave and Sung Sot Caves are adorned with rows of spectacular stalactites, descending like dragon teeth from above. Investigate via boat, and find island jewels like Ti Top - a sharp, slope of land decorated with a crisp fringe of gleaming sand. The seaplanes that soar overhead, offer a magnificent bird's eye perspective. Located in Vietnam's northeast, the unique topography that forms the islands continues into neighbouring national parks like Cat Ba - which rises and falls in a similar, jaggedly undulating fashion, just without the flooded seawater in-between.

## Day 14 - Day at Sea

Days at sea are the perfect opportunity to relax, unwind and catch up with what you've been meaning to do. So whether that is going to the gym, visiting the spa, whale watching, catching up on your reading or simply topping up

Wild Earth Travel

*Small Ships, Big Adventures*

**0800 945 3327** (within New Zealand) | +64 (0) 3 365 1355 | **1800 107 715** (within Australia)

info@wildearth-travel.com | wildearth-travel.com

# Wild Earth Travel

*Small Ships, Big Adventures*

**wildearth-travel.com**

**info@wildearth-travel.com**

your tan, these blue sea days are the perfect balance to busy days spent exploring shore side.

## Day 15 - Hong Kong

A spectacular, serrated skyline of soaring towers and neon lights, Hong Kong is a vibrant, immersive metropolis and cultural hub. Dramatic harbour-front light shows transform the waterfront's gleaming buildings into a colourful canvas - best seen from the Star Ferry, when the Symphony of Lights blares into life each evening. A city where future and tradition collides - perhaps best illustrated by the skyscrapers that feature gaping holes, designed to allow spirit dragons to soar from the hills to the waterfront unimpeded. Wander flowing shopping streets, wade through sprawling markets and soak up the neon glory of this one-of-a-kind city - which continues to reach for the sky. Hong Kong's dense jumble of activity is one of its main appeals, but once you've felt the thrill of rising to towering observation decks, to see the soaring city from above, it's surprisingly easy to find peace among Hong Kong's intense urban wonders. Victoria Peak is the highest point and it offers staggering views down over the city and harbour. The Peak Tram funicular can ferry you to the top, to the vantage point which was historically adored by the rich for the cooler air found here, away from the busy bustle of the city streets. Many elaborate temples add a tranquil element to Hong Kong's whirr, and Tin Hau temple has a surprisingly urban location, considering its dedication to the Goddess of the Sea. It did once occupy the shorefront, but the city's growth saw land reclaimed from the sea around it, leaving the temple marooned inland. Having been leased to the British for 99 years, milky tea is a revered tradition here - enjoy your cup with a serving of local dim sum. While it's easy to think all the bright lights are the sum of today's Hong Kong, you need only walk or board a tram for the short jaunt west into Western to discover a side of Hong Kong that is more traditionally Chinese but no less high-energy. You'll discover the real Hong Kong to the east of Central, too, in Wan Chai, Causeway Bay, and beyond. Amid the residential towers are restaurants, shopping malls, bars, convention centers, a nice smattering of museums, and--depending on fate and the horse you wager on--one of Hong Kong's luckiest or unluckiest spots, the Happy Valley Racecourse. Kowloon sprawls across a generous swath of the Chinese mainland across Victoria Harbour from Central. Tsim Sha Tsui, at the tip of Kowloon peninsula, is packed with glitzy shops, first-rate museums, and eye-popping views of the skyline across the water. Just to the north are the teeming market streets of Mong Kok and in the dense residential neighborhoods beyond, two of Hong Kong's most enchanting spiritual sights, Wong Tai Sin Temple and Chi Lin Nunnery. As you navigate this huge metropolis (easy to do on the excellent transportation network), keep in mind that streets are usually numbered odd on one side, even on the other. There's

no baseline for street numbers and no block-based numbering system, but street signs indicate building numbers for any given block.

## Day 16 - Post Cruise

\_\_ **\*\*Post Cruise Benefits\*\*** \_\_  
\_\_ **\*\*Airport transfers\*\*** \_\_  
\_\_ **\*\*International flights - Economy class\*\*** \_\_  
\_\_ **\*\*or Business Class upgrade\*\*** \_\_  
\_\_ **\*\*Private Executive Transfers\*\*** \_\_

### Please Note:

Itineraries are subject to change.

Wild Earth Travel

*Small Ships, Big Adventures*

**0800 945 3327** (within New Zealand) | +64 (0) 3 365 1355 | **1800 107 715** (within Australia)

info@wildearth-travel.com | **wildearth-travel.com**



# Wild Earth Travel

*Small Ships, Big Adventures*

**wildearth-travel.com**

**info@wildearth-travel.com**

## YOUR SHIP: SILVER NOVA

<b>YOUR SHIP:</b>	<b>Silver Nova</b>
<b>VESSEL TYPE:</b>	<b>Luxury Cruise</b>
<b>LENGTH:</b>	<b>801 Feet / 244.2 Meters</b>
<b>PASSENGER CAPACITY:</b>	<b>728</b>
<b>BUILT/REFURBISHED:</b>	<b>2022/2023</b>

Silver Nova is more than a new ship by Silversea, it is a Nova way of luxury travel.

Introducing Silver Nova - the twelfth ship to join our fleet. Our newest vessel will join us in summer 2023, and will be a home away from home for up to 728 guests. Silver Nova's innovative asymmetrical design introduces the world like never before, offering an immersive destination experience to our guests. With a gross tonnage of 54,700 tons she will offer a space-to-guest ratio of 75 GRT-per-passenger becoming one of the most spacious cruise ships ever built. What's more, Silver Nova will be our most environmentally friendly, and thanks to her groundbreaking technological solutions, she will propel Silversea into a new era of sustainable cruising. It's the Nova way to travel.

**S.A.L.T. Chef's Table** - An intimate dining experience with a curated tasting menu highlighting regional flavors. Includes wine & cocktail pairing. Reservation fee: \$180.

**S.A.L.T. Kitchen** - Destination-inspired menus featuring local flavors. The Terrain menu showcases the current port, while the Voyage menu offers highlights from the journey.

**Atlantide** - Classic fine dining with a sophisticated ambiance.

Indulge in premium ingredients like caviar, lobster, and exquisite desserts.

**La Terrazza** - Authentic Italian cuisine with homemade pasta, antipasto, risotto, and bold regional wines. Enjoy stunning views from the outdoor terrace.

**La Dame** - French fine dining with curated tasting menus and wine pairings. Reservation fee: \$160.

**Kaiseki** - Japanese culinary artistry with sake, whiskey, or tea pairings. Reservation fee: \$80.

**Silver Note** - A lively venue with gourmet tapas, jazz, and soul music, perfect for a night of entertainment.

**The Grill** - Casual dining by day, transforming into the "Hot Rocks" BBQ experience at night, set in The Marquee.

**Spaccanapoli** - Thin, freshly made pizzas from Naples, served in an open-air setting at The Marquee.

**The Pool Deck** - Spacious sun deck with Silversea's largest pool and an infinity-edge whirlpool for ultimate relaxation.

**The Dusk Bar** - Open-air sky bar offering panoramic views and destination-inspired cocktails.

**The Marquee** - A relaxed outdoor venue combining The Grill and Spaccanapoli for casual dining.

**Arts Cafe** - A cultural hub for light bites, fresh juices, coffee, and artistic inspiration.

**S.A.L.T. Bar** - Locally inspired cocktails reflecting each destination.

**S.A.L.T. Lab** - Hands-on culinary workshops exploring local food culture.

**The Shelter** - An elegant cocktail bar offering signature drinks in an intimate setting.

Wild Earth Travel

*Small Ships, Big Adventures*

**0800 945 3327** (within New Zealand) | +64 (0) 3 365 1355 | **1800 107 715** (within Australia)

info@wildearth-travel.com | wildearth-travel.com

# Wild Earth Travel

*Small Ships, Big Adventures*

**wildearth-travel.com**

**info@wildearth-travel.com**

Dolce Vita - The ship's social hub, featuring live piano music and expertly crafted cocktails.

Panorama Lounge - A versatile space for relaxing by day and live music or DJ sets at night.

Connoisseur 's Corner - A stylish cigar lounge with premium selections.

Observation Lounge - A peaceful retreat with panoramic sea views and an in-house library.

The Venetian Lounge - A grand theatre for live performances and film screenings.

Atrium - The heart of the ship, home to key services, The Shelter, and Arts Cafe, with stunning floor-to-ceiling windows.

Boutique - Luxury shopping at sea, featuring premium brands and exclusive collections.



ollections.

Wild Earth Travel

*Small Ships, Big Adventures*

**0800 945 3327** (within New Zealand) | +64 (0) 3 365 1355 | **1800 107 715** (within Australia)

info@wildearth-travel.com | **wildearth-travel.com**

# Wild Earth Travel

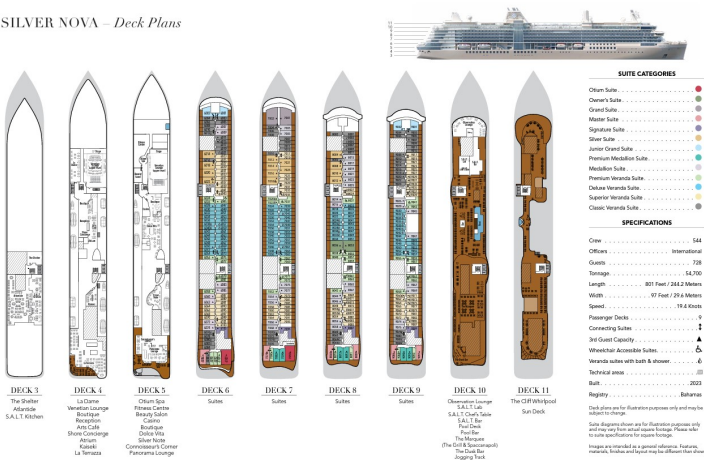
*Small Ships, Big Adventures*

[wildearth-travel.com](http://wildearth-travel.com)

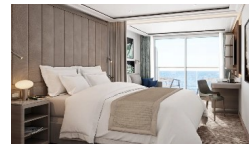
[info@wildearth-travel.com](mailto:info@wildearth-travel.com)

## INSIDE YOUR SHIP

SILVER NOVA – Deck Plans



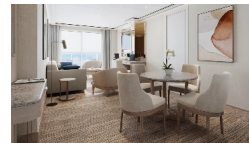
### Classic Veranda



### Grand 1 Bedroom



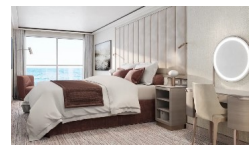
### Junior Grand 2 Bedroom



### Medallion



### Owner 1 Bedroom



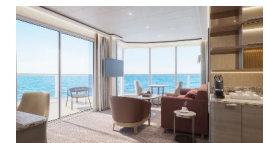
### Deluxe Veranda



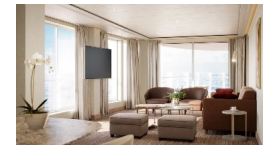
### Junior Grand 1 Bedroom



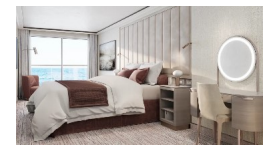
### Master



### Otium



### Owner 2 Bedroom



Wild Earth Travel

*Small Ships, Big Adventures*

0800 945 3327 (within New Zealand) | +64 (0) 3 365 1355 | 1800 107 715 (within Australia)

[info@wildearth-travel.com](mailto:info@wildearth-travel.com) | [wildearth-travel.com](http://wildearth-travel.com)



# Wild Earth Travel

*Small Ships, Big Adventures*

**wildearth-travel.com**

**info@wildearth-travel.com**

## PRICING

**11-Feb-2026 to 27-Feb-2026**

Classic Veranda	19700 AUD pp
Superior Veranda	20300 AUD pp
Deluxe Veranda	21600 AUD pp
Premium Veranda	22200 AUD pp
Medallion	29100 AUD pp
Premium Medallion	32200 AUD pp
Junior Grand 1 Bedroom	33900 AUD pp
Silver	36000 AUD pp
Signature	45700 AUD pp
Master	47700 AUD pp
Grand 1 Bedroom	48700 AUD pp
Junior Grand 2 Bedroom	51600 AUD pp
Owner 1 Bedroom	60200 AUD pp
Otium	64000 AUD pp
Owner 2 Bedroom	80200 AUD pp

Wild Earth Travel  
*Small Ships, Big Adventures*

**0800 945 3327** (within New Zealand) | +64 (0) 3 365 1355 | **1800 107 715** (within Australia)

info@wildearth-travel.com | wildearth-travel.com