



# Wild Earth Travel

*Small Ships, Big Adventures*



**wildearth-travel.com**

**info@wildearth-travel.com**

## 24 DAYS ANTARCTICA & SOUTH GEORGIA LUXURY EXPEDITION - PUERTO WILLIAMS TO BUENOS AIRES

Take the next three weeks to discover Antarctica, South Georgia and the Falkland Islands. These are some of the remotest destinations on the planet, and home to much wildlife. From beaches covered in penguins to seas filled with marine life, the sheer abundance is jaw-dropping! Additionally, the region is coloured with centuries of intrepid explorer history, much of which you'll discover on out shore excursions with our expert guides. Explore the rugged beauty of these pristine landscapes, bathe in history past and present and enjoy one of the inspiring trips you will ever experience. End with an overnight in Buenos Aires.

**Wild Earth Travel**  
*Small Ships, Big Adventures*

**0800 945 3327** (within New Zealand) | +64 (0) 3 365 1355 | **1800 107 715** (within Australia)

info@wildearth-travel.com | **wildearth-travel.com**

# Wild Earth Travel

*Small Ships, Big Adventures*

[wildearth-travel.com](http://wildearth-travel.com)

[info@wildearth-travel.com](mailto:info@wildearth-travel.com)



shores of the Beagle Channel. It claims to be the "southernmost city in the world", however owing to its small size - 2500 residents approximately - the much larger Argentinean city of Ushuaia, which sits on the northern side of the same channel, also claims that title. The surrounding scenery is magnificent. The wild windswept mountains rise above the tree line and are regularly dusted with snow. The city itself has the dramatic backdrop called "Dientes de Navarino" (literally "teeth of Navarino"), which rival the famous Torres del Paine further to the north. The area was originally used by the Yaghan people, hunter-gatherers who despite enduring the harsh regional climate, could not weather the arrival of Europeans. The current city was established as a naval base in 1953 and honours the British-Chilean naval commander John Williams Wilson of the 16th century. Initially it served to protect territorial possessions and fishing rights of the area, as well as offering logistical support to Antarctic bases. More recently it has become a departure point for scientific and tourism trips to the Antarctic region. In contrast to the bustle and traffic of a very commercial Ushuaia, Puerto Williams offers a quieter, more relaxed experience. It charms the visitor with a small village feel, complete with rustic buildings and the homely smell of drifting wood smoke. A haven of peace at the end of the world.

## Days 2 - 3 - Drake Passage

Sailing the legendary Drake Passage is an experience that few are ever lucky enough to experience. The southern tip of the Americas already feels like a wild enough environment - but the sensation of watching the distant cliffs of the peninsular known as the 'End of the World' fade into the horizon, is one that's equal parts epic, eerie and magical. Set sail, to slowly drop off the bottom of the map from Cape Horn, and voyage on an expedition down into the icy underworld of Antarctica. Drake Passage is an extraordinary voyage of romantic ocean faring legend, as you aim for Antarctica's icy realm. On arrival, skyscraper sized icebergs salute you, as you traverse the waters of this continent where snow and ice dwelling creatures like penguins and whales roam undisturbed. Your first sight of this most-unexplored place will most likely be the South Shetland Islands. Walk in the footsteps of some of history's greatest and bravest explorers as you explore famed, snow-covered landmasses like Elephant and Deception Island. If the journey across Drake Passage sounds daunting, don't worry - even in rough seas you're never alone, and will often be accompanied on this spine-tingling adventure by soaring albatrosses and maybe even a protective pod of humpbacks and hourglass dolphins or two. Converging warm and cool ocean currents attract some spectacular animal life to the passage. If this is your first visit to this magical continent, you'll also want to familiarise yourself with our blog for first timers to Antarctica.

## ITINERARY

### Days 0 - 1 - Pre Cruise & Puerto Williams

- \_ **\*\*Pre Cruise Benefits\*\*** \_
- \_ **\*\*Private Executive Transfers\*\*** \_
- \_ **\*\*International flights - Economy class\*\*** \_
- \_ **\*\*or Business Class upgrade\*\*** \_
- \_ **\*\*Airport transfers\*\*** \_
- \_ **\*\*Hotel\*\*** \_
- \_ **\*\*In-country flights/Group flights\*\*** \_

Puerto Williams is a Chilean city located on Navarino Island on the southern

Wild Earth Travel  
*Small Ships, Big Adventures*

0800 945 3327 (within New Zealand) | +64 (0) 3 365 1355 | 1800 107 715 (within Australia)

[info@wildearth-travel.com](mailto:info@wildearth-travel.com) | [wildearth-travel.com](http://wildearth-travel.com)

# Wild Earth Travel

*Small Ships, Big Adventures*

**wildearth-travel.com**

**info@wildearth-travel.com**

## Day 4 - Antarctic Sound

Few voyages ignite the imagination like a journey down to one of the planet's most remote, extreme and enchanting wilderness, Antarctica. An adventure in its purest form, only a handful of people will ever be lucky enough to experience the majestic beauty of these monochrome landscapes first-hand. The Antarctic Sound will be one of your first encounters of this whitewash kingdom, located at the northerly tip of the Antarctic Peninsula - which sprawls up like a tentacle towards Tierra del Fuego, South America's most southerly point, otherwise known as the 'End of the World'. Taking its name from the first ship to brave the passageway between the peninsular and the Joinville Island groups back in 1902, the Sound is a raw, sensory assault of imposing iceberg slabs, broken away from the disintegrating Larsen Ice Shelf. Come face-to-face with stadium-sized islands of ice and meet the extraordinary birdlife that call this whitewash kingdom home. Watch on, as colonies of Gentoo penguins hop around, and cape petrels sweep overhead, as the continent's unique wildlife thrives around you. If you're planning your first venture into Antarctica, you'll want to brush up on your photography skills in advance, to capture this unforgiving continent in all of its unrestrained glory. Read our blog for tips on how to ensure that your photos do justice to the adventure of a lifetime.

## Days 5 - 6 - Antarctic Peninsula

The Antarctic Peninsula unravels upwards towards South America, reaching out a beckoning finger to the adventurous, who dare to explore this untamed realm. Stretching up from the heart of the world's southernmost continent, the Antarctic Peninsula lies a mere 620 mile from Tierra del Fuego and, for many, offers a spectacular first taste of the snow-blanketed landscapes and colossal ice sculptures, which make up Earth's least-explored continent. Unseen by humans until 1820 - a blink of an eye ago in relative terms - this is an adventure sure to make your hairs stand on end, as you experience the thrill of the truly unknown and extraordinary. The vast peninsula is sprinkled with research bases, which are at the frontline of human scientific endeavour, pushing to study and understand this unique landscape, its exceptional wildlife, and the impact that humans are having on this pristine continent. Witness cathedral-sized icebergs up close, and blue-hued glaciers, slowly slipping from imposing locations like Hope Bay. Blanched mountain peaks cover the peninsula, and you'll find thousands of adorable Adelie penguin pairs thriving undisturbed in this peninsula's unique setting.

## Days 7 - 8 Day at sea

Days at sea are the perfect opportunity to relax, unwind and catch up with what you've been meaning to do. So whether that is going to the gym, visiting the spa, whale watching, catching up on your reading or simply topping up your tan, these blue sea days are the perfect balance to busy days spent exploring shore side.

## Days 9 - 11 - South Georgia

Charcoal-black mountains ladled with snow, giant glaciers and thriving wildlife combine to make South Georgia one of the great natural islands. Adventure to these far flung lands - where the animals are in charge and humans come a distant second. Here you'll witness a cacophony of calling birds, natural set pieces like elephant seals clashing and thrashing, and crowds of colourful king penguins stretching out as far as the eye can see. An overseas territory of the UK, these isolated, subantarctic islands once formed a remote whaling centre - and you can still visit the former whaling stations. Nowadays the giants of the sea are free to cruise the icy waters uninhibited. Written into explorer history due to its links with Ernest Shackleton's tale of Antarctic exploration, shipwreck and survival, the Endurance's crew were saved when he reached the salvation of these shores in 1916 - before returning to collect the remaining sailors from Elephant Island. A museum commemorates the legendary mission, and you can see the memorial to Shackleton that stands over his final resting place on this fabled island. South Georgia's colonies of king penguins - with vivid bursts of yellow and orange around their necks - stand, squabble and curiously investigate, enjoying the isolated respite of this island. They're joined by smaller penguin species like Macaroni penguins, and other glorious birdlife like the majestic wandering albatrosses, which you can see gliding on gusts of wind, over the choppy waves.

## Days 12 - 13 - Day at sea

Days at sea are the perfect opportunity to relax, unwind and catch up with what you've been meaning to do. So whether that is going to the gym, visiting the spa, whale watching, catching up on your reading or simply topping up your tan, these blue sea days are the perfect balance to busy days spent exploring shore side.

## Day 14 - Port Stanley

Wild Earth Travel

*Small Ships, Big Adventures*

**0800 945 3327** (within New Zealand) | +64 (0) 3 365 1355 | **1800 107 715** (within Australia)

info@wildearth-travel.com | wildearth-travel.com



# Wild Earth Travel

*Small Ships, Big Adventures*

**wildearth-travel.com**

**info@wildearth-travel.com**

Despite it being a stalwart of Britishness, Stanley more resembles Patagonia than Portsmouth. But, despite the windswept, vast and achingly beautiful landscape of the Falkland Islands, don't be too surprised to find the odd pub serving ales and even fish'n'chips. While landmarks such as Christ Church Cathedral, with its whalebone arch are 100% local, there is also good smattering of imported garden gnomes and Union Jacks to remind you whose territory you are really on. The Falkland Islands' ownership has long been a matter of controversy, ever since colonisation in the 18th century. At various points in their life they have been considered French, British, Spanish and Argentine. The Falklands War in 1982, despite only lasting for a short while, proved that the Brits clung to this remote outpost and the islands remain part of the British Commonwealth today. Margaret Thatcher, under whom the war was masterminded, remains something of a local hero as can be seen in the street signs (such as Thatcher Drive). For those who want to dig deeper into the past, the Historic Docklands Museum provides lots of information on the chequered historical and political background of the Falklands. However, the true heroes of Stanley are of course the thousands and thousands of penguins. Five species nest here during mating season (including the rare rockhopper penguin). There are virtually no barriers between you and the wildlife; allowing for a truly interactive, authentic and totally unforgettable experience.

## Day 15 - West Point Island

A north-westerly outpost of the scenic Falkland Islands, you'll be welcomed ashore by the calls and cries of a huge colony of black-browed albatross. Indeed, the island was originally known as Albatross Island before being renamed to reflect its geographic location. While the albatrosses - that flash white feathers in the rugged cliffs above the waves - are the most well known residents, they are far from the only animal inhabitants of this remote, isolated land. A huge army of birdlife calls the island sanctuary home, overwhelming the tiny human population and sheep that roam West Point Island's grasses. Meet the rockhopper penguins who scamper and burrow along the coast's boulders, as well as the imperial cormorants who rest here in great numbers. You're also likely to encounter Magellanic penguins during your explorations. Hike the island's quiet landscapes, and look out for endemic plants like Felton's flower carpeting the green interior. Decorated with some of the archipelago's most dramatic scenery, explore this wind-lashed, distant land of soaring cliffs and towering coastal precipices. Cliff Mountain is the island's standout - a towering sandstone monolith, and the archipelago's highest cliff, falling away to swirling waves below. Look out to the waters to spot

Commerson's dolphin chasing each other around the island's wave-washed footprint. Whales also visit, as well as the fur seals who you may spot lounging around West Point Island's inviting shores.

## Day 15 - Saunders Island

Meet some of the world's most incredible wildlife, on the remote Saunders Island. Sitting to the north-west of the Falkland's archipelago, the British established their first settlement here in 1765, at Port Egmont. Remote, wild and wonderful, the island now serves as a lush grazing ground for plenty of sheep - but it's an astonishing place to encounter far rarer animals - from elephant seals to silvery grebes and Peale's dolphins. Connected by sinewy links of beach and sandy dunes, which create some of the most dramatic scenery in the Falklands, the archipelago's fourth biggest island is home to its best birdlife - including a colony of neatly tuxedoed king penguins. Saunders Island's topography tightens at The Neck - where you'll find even more penguin activity. Colonies squawk and chatter in huge crowds here, with Gentoo, Rockhopper and Magellanic penguins dipping into the water, and clambering over boulders. A gentle hike to the summit of Mount Richards will take you 457 metres above sea level, offering an expansive overview, from which you can look out across the tips of the moody waves to see Carcass Island and West Point Island emerging. The cliffs to the north of the mountain host rare black-browed albatross - a sight of sheer grace in flight - but comically clumsy at times when landing. Elsewhere, wide lakes are home to various water birds - including the rare black-necked swans. Take a read of our blog to find out more about the hugely diverse wildlife that is present on this unique island.

## Days 16 - 17 - Day at sea

Days at sea are the perfect opportunity to relax, unwind and catch up with what you've been meaning to do. So whether that is going to the gym, visiting the spa, whale watching, catching up on your reading or simply topping up your tan, these blue sea days are the perfect balance to busy days spent exploring shore side.

## Day 18 - Puerto Madryn

Overlooking the vast Golfo Nuevo, the northern Patagonian town of Puerto Madryn is one of Argentina's top whale-watching spots. Founded by Welsh explorers, who arrived aboard the Mimosa ship in 1865, Puerto Madryn

Wild Earth Travel

*Small Ships, Big Adventures*

**0800 945 3327** (within New Zealand) | +64 (0) 3 365 1355 | **1800 107 715** (within Australia)

info@wildearth-travel.com | **wildearth-travel.com**

# Wild Earth Travel

*Small Ships, Big Adventures*

**wildearth-travel.com**

**info@wildearth-travel.com**

welcomes visitors to enjoy its wonderful wildlife, traditional tea shops, and sheep-rearing ranches known as estancias. Taste some of Argentina's tenderest and juiciest steak cuts, or piles of seafood, in the waterfront restaurants of the town's promenade, as you fuel up ahead of the natural adventures of a lifetime. An astonishing array of animals call the protected Valdes Peninsula home. See penguins wandering, sea lions yawning lazily, and playful guanacos galloping here. Head to the beaches of Estancia San Lorenzo, to hear the racket made by hundreds of Magellan penguins. The blackened beach of Loberia de Punta Loma bears witness to huge elephant seals rising up and clashing dramatically - or lounging around docilely - and you can even take advantage of the opportunity to swim, snorkel and scuba dive with curious and playful sea lions. Further afield, Tombo National Reserve is a vast breeding ground for birds and penguins, while a huge Magellanic penguin colony, 1,500,000 strong, spreads out further south at Punta Tombo. Boats roll out from Puerto Madryn on the hunt for Southern Right Whales and orcas among the many marine mammals who move through the waters offshore. Few experiences compare with feeling the salt spray, as giant humpbacks crash against the surface. Look out for the black and white Commerson's dolphins too, which are some of the smallest members of the dolphin family.

## Days 19 - 20 - Day at sea

Days at sea are the perfect opportunity to relax, unwind and catch up with what you've been meaning to do. So whether that is going to the gym, visiting the spa, whale watching, catching up on your reading or simply topping up your tan, these blue sea days are the perfect balance to busy days spent exploring shore side.

## Days 21 - 22 - Buenos Aires

Passionate, and alive with an infectious crackling energy, the Argentine capital is a breathlessly romantic city, which blends old-world colonial architecture with a down-to-earth Latin American clamour. Famed for steamy tango interplays, and expertly seared steak slabs, a visit to Buenos Aires is a fiery fiesta for the senses. Parque Tres de Febrero is a 400-hectare oasis where 18,000 rose bushes bloom, and skyscrapers give way to still lakes and pretty paths of rollerblading locals. Mighty palm trees - that look like exploding fireworks - stand tall in Plaza de Mayo, the heart of this sprawling cosmopolitan capital of 48 barrios. The square has served as the stage for many fundamental events in this country's history, and the location where the seeds of independence were sewn continues to serve as the city's gathering

point - and is a place for solidarity, rebellion and revolution. The presidential Casa Rosada's salmon-hued Palatial Palace borders the plaza, while nearby Museum Nacional de Bellas Artes houses the largest collection of public art in Latin America. Teatro Colon, the opulent 1908 opera house, is one of the world's finest venues - musical performance here take on an ethereal quality, with the exceptional acoustics transferring every quiver of bow, and tremor of vocal cord, to the audience in spine-tingling clarity. The gargantuan, precipitous terraces of Bombonera Stadium form another of Buenos Aires's incredible venues, and a wall of noise emanates from it when Boca Juniors take to the field. Juicy steak and punchy Malbec flow in the city's parrillas - steakhouses - while glitzy bars and thumping nightclubs welcome revellers late into the night. It's not just the meat that sizzles here either - tango dancers fill milongas - dance halls - to strut passionately until the early hours. Sip steaming mate, the country's national drink, shop in covered markets, and explore Cementerio de la Recoleta - a city of grand graves and intricate memorials honouring presidents, politicians and notable Argentine heroes from history.

## Day 23 - Post Cruise

— **\*\*Post Cruise Benefits\*\*** —  
— **\*\*Airport transfers\*\*** —  
— **\*\*International flights - Economy class\*\*** —  
— **\*\*or Business Class upgrade\*\*** —  
— **\*\*Private Executive Transfers\*\*** —

### Please note:

Itineraries are subject to change.

Wild Earth Travel

*Small Ships, Big Adventures*

**0800 945 3327** (within New Zealand) | +64 (0) 3 365 1355 | **1800 107 715** (within Australia)

info@wildearth-travel.com | wildearth-travel.com





# Wild Earth Travel

*Small Ships, Big Adventures*

**wildearth-travel.com**

**info@wildearth-travel.com**

## YOUR SHIP: SILVER ENDEAVOUR

<b>YOUR SHIP:</b>	<b>Silver Endeavour</b>
<b>VESSEL TYPE:</b>	<b>Luxury Expedition</b>
<b>LENGTH:</b>	<b>164.40 metres</b>
<b>PASSENGER CAPACITY:</b>	<b>200</b>
<b>BUILT/REFURBISHED:</b>	<b>2021</b>

Designed for polar exploration, Silver Endeavour breaks the ice of luxury expedition travel.

We're proud to announce that our newest addition has joined the fleet. Built to PC6 Polar Class specifications - one of the highest Polar Class classifications there is - Silver Endeavour revolutionises our expedition voyages, and allows us to travel deeper to some of the planet's farthest flung coasts. Her statistics speak for themselves: from unrivalled, industry-leading crew-to-guest, zodiac-to-guest and expert-to-guest ratios, to cutting-edge navigation and exploration technology and hallmark Silversea comfort make her the most luxurious expedition ship ever built.

Spread over eight public decks, not only does she feature ample onboard space, multiple restaurants, plus a huge choice of bars and lounges, but her large and luxurious suites are some of the best in expedition cruising. Superbly designed, all her suites feature a balcony and our highest standards of service thanks to an impressive crew-to-guest ratio of 1:1.

### Mud Room

Silver Endeavour's Mud Room is the perfect place to prepare for all your expedition activities. Spaciously designed, the two mud

rooms are superbly modern, and equipped with state-of-the-art equipment.

### Explorer Lounge

Strategically located mid-ship on deck 4, the Explorer Lounge is the operational heart of shore excursions while onboard. This is where you'll attend your daily recap and briefing sessions or attend lectures.

### Connoisseur's Corner

The Connoisseur's Corner is an indulgent and sophisticated cigar lounge, where you can enjoy an after dinner drink in a cosy private club atmosphere.

### Otium Spa

Otium is where you can relax and unwind, but also where you can enjoy world class treatments that make sure you look as good as you feel and that even Venus herself would envy.

### Observation Lounge

The Observation Lounge offers one of our favourite vantage points of Silver Endeavour. Plus 270-degree surrounding glass windows make this immersive venue ideal whatever time of the day.

### Beauty Salon

Our committed and competent team of beauty therapists is here to help keep your hair, nails, skin, and body healthy and happy.

### Fitness Centre

Whether you are a serious keep fit fanatic or casual athlete, you'll find what you're looking for in Silver Endeavour's Fitness Centre. Expertly designed classes and personal training sessions make sure that you keep in shape.

### Boutique



Wild Earth Travel  
*Small Ships, Big Adventures*

**0800 945 3327** (within New Zealand) | +64 (0) 3 365 1355 | **1800 107 715** (within Australia)

info@wildearth-travel.com | **wildearth-travel.com**



# Wild Earth Travel

*Small Ships, Big Adventures*



**wildearth-travel.com**

**info@wildearth-travel.com**

Located mid-ship on Deck 5, the Boutique aboard Silver Endeavour means luxury shopping experiences do not end just because you're at sea! Carefully selected partners offer a wide selection of the latest fashions.

#### Pool Deck

Surrounded by glazing extended all the way to the top of the venue, the Pool Deck gives you the feeling of always being connected to the sea. The glass-enclosed pool deck is the ideal place to enjoy breathtaking views.

#### Library

Whether you're an avid bibliophile or simply prefer a quiet place while at sea, it's hard not to fall in love with Silver Endeavour's onboard library, with its beautiful reference books, comfortable chairs and stunning scenery.



ng scenery.

**Wild Earth Travel**  
*Small Ships, Big Adventures*

**0800 945 3327** (within New Zealand) | +64 (0) 3 365 1355 | **1800 107 715** (within Australia)

info@wildearth-travel.com | **wildearth-travel.com**



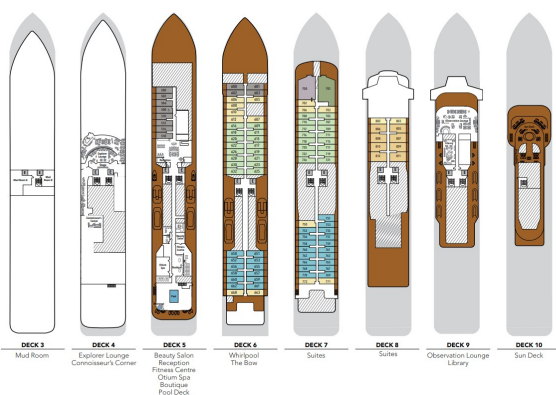
# Wild Earth Travel

*Small Ships, Big Adventures*

[wildearth-travel.com](http://wildearth-travel.com)

[info@wildearth-travel.com](mailto:info@wildearth-travel.com)

## INSIDE YOUR SHIP



SUITE CATEGORIES	
Owner's Suite	●
Grand Suite	●
Silver Suite	●
Premium Veranda Suite	●
Deluxe Veranda Suite	●
Superior Veranda Suite	●
Classic Veranda Suite	●

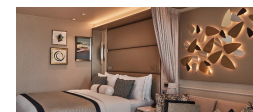
SPECIFICATIONS	
IMO Polar Code rating	PC5
Crew	200
Officers	International
Guests	200
Tonnage	20,649
Length	539 Feet (164.30 Metres)
Width	63 Feet (19.20 Metres)
Speed	19 Knots
Passenger Decks	8
Disabled Suites	2
Connecting suites	2
Built	2021
Registry	Bahamas

Decorations are for illustrative purposes only and may vary from actual ship fittings. Please refer to suite specifications for square footage.

### Classic Veranda



### Deluxe Veranda



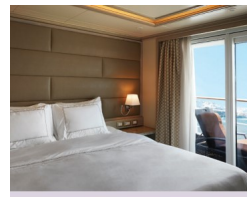
### Grand 1 Bedroom



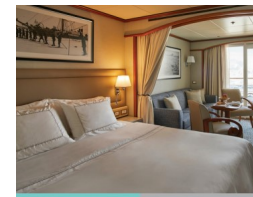
### Grand 2 Bedroom



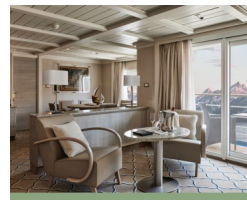
### Medallion



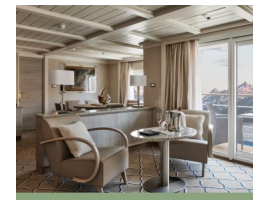
### Midship Veranda



### Owner 1 Bedroom



### Owner 2 Bedroom



Wild Earth Travel

*Small Ships, Big Adventures*

0800 945 3327 (within New Zealand) | +64 (0) 3 365 1355 | 1800 107 715 (within Australia)

[info@wildearth-travel.com](mailto:info@wildearth-travel.com) | [wildearth-travel.com](http://wildearth-travel.com)





# Wild Earth Travel

*Small Ships, Big Adventures*



**wildearth-travel.com**

**info@wildearth-travel.com**

## PRICING

### 04-Oct-2025 to 27-Oct-2025

Vista	29600 AUD pp
Medallion	49600 AUD pp
Silver	54300 AUD pp
Royal 1 Bedroom	59500 AUD pp
Grand 1 Bedroom	65200 AUD pp
Owner 1 Bedroom	71400 AUD pp
Royal 2 Bedroom	87300 AUD pp
Grand 2 Bedroom	93000 AUD pp
Owner 2 Bedroom	98100 AUD pp
Veranda	0 pp
Midship Veranda	0 pp

### 03-Mar-2027 to 25-Mar-2027

Classic Veranda	40700 AUD pp
Superior Veranda	42400 AUD pp
Deluxe Veranda	43200 AUD pp
Premium Veranda	43800 AUD pp
Silver	49600 AUD pp
Grand 1 Bedroom	68700 AUD pp
Owner 1 Bedroom	87600 AUD pp



**Wild Earth Travel**

*Small Ships, Big Adventures*

**0800 945 3327** (within New Zealand) | +64 (0) 3 365 1355 | **1800 107 715** (within Australia)

info@wildearth-travel.com | **wildearth-travel.com**