



**wildearth-travel.com**

**info@wildearth-travel.com**

# 10 DAYS LUXURY GREENLAND EXPEDITION - NUUK TO NUUK

Experience the wonders of Disko Bay - where icebergs are born - on this thrilling tour of Greenland's natural wonder. Join us as we land in remote locations with breathtaking views, navigate dramatic ice floes, and seek out pristine landscapes of untouched ice and snow. Get up close to towering ice walls and encounter the ocean's giants on exhilarating Zodiac and kayak adventures. Explore the raw power of nature with unparalleled access and expert guidance.



## ITINERARY

Days 0 - 1 - Nuuk (Godthab)

- \_ **\*\*Pre Cruise Benefits\*\*** \_
- \_ **\*\*Private Executive Transfers\*\*** \_
- \_ **\*\*International flights - Economy class\*\*** \_
- \_ **\*\*or Business Class upgrade\*\*** \_
- \_ **\*\*Airport transfers\*\*** \_



# Wild Earth Travel

*Small Ships, Big Adventures*

**wildearth-travel.com**

**info@wildearth-travel.com**

— \*\*Hotel\*\* —  
— \*\*Charter/Group flights\*\* —

In the bustling capital city of Greenland, you could be forgiven for forgetting you are in such a vast and isolated country. Nuuk is Greenland's economic and social hub, home to more than a third of Greenland's population, and although it feels like a world capital, scratch the surface, and a uniquely Greenlandic character can be found underneath. Nuuk Cathedral overlooks the gorgeous old Colonial Harbour district and the Greenland National Museum, resting place of the legendary Qilakitsoq mummies, the true highlight of the museum's archaeological collection. Above the Colonial Harbour sits downtown Nuuk, with lines of Scandistyle apartments, a bustling shopping district, the Greenlandic Parliament, Nuuk City Hall (which welcomes visitors to see its artwork) and even outdoor cafes selling locally produced food and beer. These nods to modernity compete for space with local artisan boutiques, the meat market selling the catch from Nuuk's vast fjord-lands, and the stunning Katuaq Cultural Centre, where blockbuster movies, as well as local and foreign performers entertain the people of Nuuk. Although Nuuk has long been a melting pot of Danish and Greenlandic ideas, this is a city where Greenland displays its sophistication, with the Country's only traffic lights, roundabouts and University. Most of all, expect to find a multitude of friendly people who are proud of who they are, and equally proud of the city they call home.

## Day 2 - Maniitsoq

Located in the central part of Greenland's western coast, Maniitsoq is Greenland's sixth-largest town, and home to less than 2700 inhabitants. The main attractions are the small museum and old cemetery at the northern end of town. At the community hall local artist and artisans usually exhibit some of their carvings and beadwork. The beadwork pieces are not created just as souvenirs for visitors -- the national dress of the West-Greenlandic women uses an elaborately beaded collar. Fishing trips and even heli-skiing on nearby mountains are considered Maniitsoq's other assets. Its local name (meaning 'place of rugged terrain') contrasts somewhat with the name given by the Danish in 1782 ('New Sugarloaf').

## Day 3 - Kuannit Point & Itilleq, Disko Island

## Day 4 - Eqip Sermia Glacier

## Day 5 - Ilulissat

Known as the birthplace of icebergs, the Ilulissat Icefjord produces nearly 20 million tons of ice each day. In fact, the word Ilulissat means "icebergs" in the Kalaallisut language. The town of Ilulissat is known for its long periods of calm and settled weather, but the climate tends to be cold due to its proximity to the fjord. Approximately 4,500 people live in Ilulissat, the third-largest town in Greenland after Nuuk and Sisimiut. Some people here estimate that there are nearly as many sled dogs as human beings living in the town that also boasts a local history museum located in the former home of Greenlandic folk hero and famed polar explorer Knud Rasmussen.

## Day 6 - Sisimiut

Sisimiut ('The People of the Fox Holes') is Greenland's second city, the largest Arctic City in North America, and a hub between the warmer South and the frozen North of the country. With a young, dynamic population, including students from all over the country, Sisimiut is one of the fastest growing cities in Greenland. Inhabited for more than four and a half thousand years, the Danish Colonial Era saw the rapid development of the city into a trade centre, and the old buildings and artefacts can be seen at Sisimiut Museum, a collection of beautifully restored buildings displaying everything from ancient turf houses to modern Inuit art. The local artisans are considered some of the best in Greenland, and often sell their wares direct from their communal workshop in the harbour, where they barter with hunters for raw materials. Today, modern industry focussed on processing sea food and shipping; KNI, the state-run chain of general stores operating in even the most remote settlements is based in Sisimiut. Most residents still live in the colourful wooden houses Greenland is so well known for. Sisimiut's vast back country offers excellent opportunities for hiking and fishing, and the locals often use sled dogs or snowmobiles to get around their vast mountainous playground during the long winters. In the summer, one can walk as far as Kangerlussuaq International Airport, a trail also used for the gruelling Polar Circle Marathon, one of the toughest endurance events in the world.

## Day 6 - Amerloq Fjord

Sail into Amerloq Fjord, an evocative waterway, immersed in a protected landscape of soaring mountains, arctic wilderness and deep fjords. Located in western Greenland's Qeqqata municipality, this scenic fjord lies above the

Wild Earth Travel  
*Small Ships, Big Adventures*

**0800 945 3327** (within New Zealand) | +64 (0) 3 365 1355 | **1800 107 715** (within Australia)

info@wildearth-travel.com | wildearth-travel.com





# Wild Earth Travel

*Small Ships, Big Adventures*

**wildearth-travel.com**

**info@wildearth-travel.com**

Arctic Circle, with its waters flowing out into the Davis Strait. Along the rocky shores, hiking trails meander by the water's edge, and whales can occasionally be spotted in the calm waters. Huddled over the fjord's entrance is the cheerily painted town of Sisimiut, Greenland's second largest settlement. While cruising along 25 miles of fjord waters, you'll also encounter Assaqtuaq - a ghostly village that was abandoned and left to ruin in 1970. Some of the fading wooden buildings have recently had new life breathed into them for educational purposes. Sail the calm waters to reach Sarfannguit, a beautiful fishing village consisting of an assortment of small wooden houses popping with bright colours against the moody landscape. Located on an island between two fjords, Sarfannguit forms part of a UNESCO World Heritage Site, designated in 2018 to preserve the cultural and historical legacy of the Inuit. For more than 4,200 years, the Inuit have hunted and fished in these landscapes, maintaining a deep connection to the land and sea. Today, you can visit the approximately 100 residents who live in Sarfannguit to learn of their heritage, as the barks of their excited sled dogs echo over the waters.

## Day 7 - Evighedsfjord

Evighedsfjord (Eternity Fjord) is a large fjord northeast of Kangaamiut in southwest Greenland. The fjord has a length of 75 kilometers and several branches with numerous glaciers coming down from the Maniitsoq Ice Cap to the north can be seen. The Evighedsfjord has several bends and whenever the ship reaches the supposed end the fjord continues in another direction and seems to go on forever. Qingua Kujatdleq Glacier is at its southeastern end. At the northwestern end a U-shaped valley has seven glaciers coming down from the mountains but not reaching the water. The glaciers had their maximum extent around the year 1870 and have gone through several cycles of advance and retreat. The mountains on either side of the fjord can reach in excess of 2,000 meters and the fjord has a depth of up to 700 meters. Evighedsfjord's snowline is at 1,100 meters and the Evighedsfjord region is famous as one of Greenland's best heli-skiing areas.

## Day 8 - Nuuk (Godthab)

In the bustling capital city of Greenland, you could be forgiven for forgetting you are in such a vast and isolated country. Nuuk is Greenland's economic and social hub, home to more than a third of Greenland's population, and although it feels like a world capital, scratch the surface, and a uniquely Greenlandic character can be found underneath. Nuuk Cathedral overlooks the gorgeous old Colonial Harbour district and the Greenland National Museum, resting place of the legendary Qilakitsoq mummies, the true highlight of the

museum's archaeological collection. Above the Colonial Harbour sits downtown Nuuk, with lines of Scandistyle apartments, a bustling shopping district, the Greenlandic Parliament, Nuuk City Hall (which welcomes visitors to see its artwork) and even outdoor cafes selling locally produced food and beer. These nods to modernity compete for space with local artisan boutiques, the meat market selling the catch from Nuuk's vast fjord-lands, and the stunning Katuaq Cultural Centre, where blockbuster movies, as well as local and foreign performers entertain the people of Nuuk. Although Nuuk has long been a melting pot of Danish and Greenlandic ideas, this is a city where Greenland displays its sophistication, with the Country's only traffic lights, roundabouts and University. Most of all, expect to find a multitude of friendly people who are proud of who they are, and equally proud of the city they call home.

## Day 9 - Post Cruise

- \_ **\*\*Post Cruise Benefits\*\*** \_
- \_ **\*\*Charter/Group flights\*\*** \_
- \_ **\*\*Hotel\*\*** \_
- \_ **\*\*Airport transfers\*\*** \_
- \_ **\*\*International flights - Economy class\*\*** \_
- \_ **\*\*or Business Class upgrade\*\*** \_
- \_ **\*\*Private Executive Transfers\*\*** \_

## Please note:

Itineraries are subject to change.

Wild Earth Travel  
*Small Ships, Big Adventures*

**0800 945 3327** (within New Zealand) | +64 (0) 3 365 1355 | **1800 107 715** (within Australia)

info@wildearth-travel.com | **wildearth-travel.com**



# Wild Earth Travel

*Small Ships, Big Adventures*



**wildearth-travel.com**

**info@wildearth-travel.com**

## YOUR SHIP: SILVER WIND

<b>YOUR SHIP:</b>	<b>Silver Wind</b>
<b>VESSEL TYPE:</b>	<b>Small Luxury Cruise Ship</b>
<b>LENGTH:</b>	<b>156.7 metres</b>
<b>PASSENGER CAPACITY:</b>	<b>274</b>
<b>BUILT/REFURBISHED:</b>	<b>1995 / Refurbished</b>

A major upgrade in December 2018 saw Silver Wind looking better than ever. A second refurbishment in summer 2021 will see her benefitting from a strengthened to ice-class hull and will make her one of the most adaptable ships in our fleet. Still timelessly elegant, still luxuriously relaxed, her improved cruising versatility means she is able to whizz from the Polar Regions at the ends of the earth to the iconic ports of the Mediterranean with fluid ease. So whether you want to get up close and personal to penguins in Antarctica or laze on the golden sands of the Caribbean, get ready for a wealth of diverse destination experiences, in traditional Silversea comfort.

### Dining

**The Grill.** Soft breezes and ocean views beckon at the Grill, especially as the sun goes down when cruise guests gather for cocktails at the outdoor bar and talk about the day's events.

**La Terrazza.** Authentic Italian recipes and the freshest, sustainable ingredients come together in this restaurant at sea.

**The Restaurant.** Enjoy Continental and regional specialities, as well as sweeping ocean views in our main dining room.

**La Dame.** La Dame features a menu of seasonally inspired dishes prepared with the freshest locally sourced ingredients.

### Public Areas

**Pool Deck.** Chaise lounges arranged in the sun or shade. Bubbling whirlpools. The pool water refreshing in warmer climates, heated for cooler weather.

**Reception.** Be sure to visit the Reception area, where our experts can provide invaluable information to help you get the most out of your cruise.

**Fitness Centre.** The Fitness Centre offers world-class equipment, classes, and personalized services.

**Connoisseur's Corner.** If you appreciate good cognac or premium cigars, be sure to visit the Connoisseur's Corner to see the ship's exceptional selection.

**Boutique.** There is a wealth of luxury shopping experiences aboard all Silversea ships, featuring the most distinctive and appealing brands from across the globe.

**The Show Lounge.** Applaud a broad spectrum of entertainment -- from full-scale production shows and classical soloists, to cultural entertainment and feature films.

**Panorama Lounge.** Relax and unwind in the Panorama Lounge, a sophisticated yet amicable space offering beautiful ocean views as you enjoy your cruise.

**Zagara Beauty Spa.** Come and indulge in a luxurious spa treatment. Facials, body wraps, massages: the spa is the perfect place to unwind.

**Dolce Vita.** Dolce Vita is the gathering place for our savvy travellers of the world, a place where guests mingle and exchange stories and where new faces become lifelong friends.

**Zagara Beauty Salon.** Maintain your fresh look throughout your



Wild Earth Travel  
*Small Ships, Big Adventures*

**0800 945 3327** (within New Zealand) | +64 (0) 3 365 1355 | **1800 107 715** (within Australia)

info@wildearth-travel.com | **wildearth-travel.com**





# Wild Earth Travel

*Small Ships, Big Adventures*

**wildearth-travel.com**

**info@wildearth-travel.com**

luxury cruise at the Zagara Beauty Salon. Services are available for men and women.

Observation Library. The Observation Library boasts exceptional views overlooking the ocean as it stretches out below you while you enjoy your cruise.

Photo Studio. The Photo Studio offers a professional space for budding photographers to retouch, print and display their work.



their work.

Wild Earth Travel  
*Small Ships, Big Adventures*

**0800 945 3327** (within New Zealand) | +64 (0) 3 365 1355 | **1800 107 715** (within Australia)

info@wildearth-travel.com | **wildearth-travel.com**

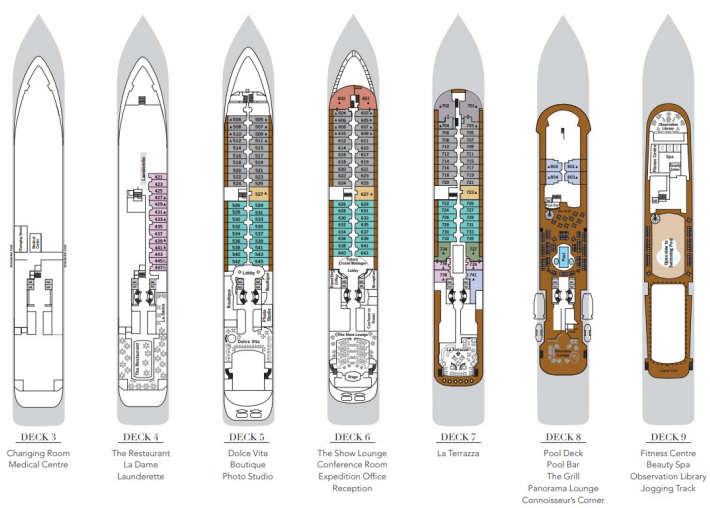


**Wild Earth Travel**  
*Small Ships, Big Adventures*

**wildearth-travel.com**

**info@wildearth-travel.com**

**INSIDE YOUR SHIP**



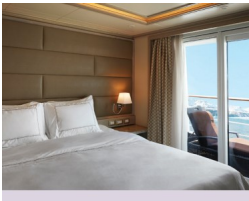
**Grand 1 Bedroom**



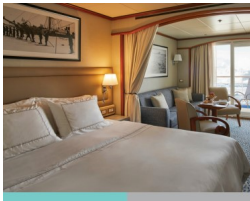
**Grand 2 Bedroom**



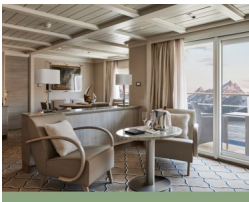
**Medallion**



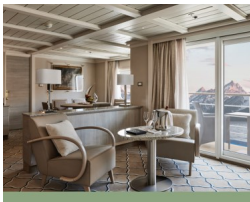
**Midship Veranda**



**Owner 1 Bedroom**



**Owner 2 Bedroom**







# Wild Earth Travel

*Small Ships, Big Adventures*

**wildearth-travel.com**

**info@wildearth-travel.com**

## PRICING

25-Jul-2026 to 03-Aug-2026

Vista	16800 AUD pp
Medallion	32200 AUD pp
Silver	40900 AUD pp
Royal 1 Bedroom	43400 AUD pp
Grand 1 Bedroom	49400 AUD pp
Royal 2 Bedroom	61200 AUD pp
Owner 1 Bedroom	62800 AUD pp
Grand 2 Bedroom	67200 AUD pp
Owner 2 Bedroom	77900 AUD pp
Midship Veranda	0 pp
Veranda	0 pp



Wild Earth Travel

*Small Ships, Big Adventures*

**0800 945 3327** (within New Zealand) | +64 (0) 3 365 1355 | **1800 107 715** (within Australia)

info@wildearth-travel.com | **wildearth-travel.com**