

Wild Earth Travel

Small Ships, Big Adventures

wildearth-travel.com

info@wildearth-travel.com

11 DAYS LUXURY GALAPAGOS CRUISE A - SAN CRISTÓBAL TO SAN CRISTÓBAL

This immersive voyage to the Galapagos will delight and astound you as there's simply nowhere else on Earth that's remotely like it. A far-flung archipelago where no two islands are the same, some are filled with birdlife, while others have vast black fields of lava which have been frozen in time. There's pristine beaches and aqua seas filled with marine life but it's the 9000 species of flora and fauna that truly delight, many of which are endemic.



ITINERARY

Days 0 - 2 - Pre Cruise & San Cristóbal, Galapagos

- _ ****Pre Cruise Benefits**** _
- _ ****Private Executive Transfers**** _
- _ ****International flights - Economy class**** _
- _ ****Airport transfers**** _
- _ ****Hotel**** _
- _ ****In-country flights/Group flights**** _

Wild Earth Travel

Small Ships, Big Adventures

0800 945 3327 (within New Zealand) | +64 (0) 3 365 1355 | **1800 107 715** (within Australia)

info@wildearth-travel.com | **wildearth-travel.com**



Wild Earth Travel

Small Ships, Big Adventures

wildearth-travel.com

info@wildearth-travel.com

Like so many of the islands in the Galapagos, San Cristobal is formed by dormant volcanoes. It lies to the east of the archipelago and is one of the oldest islands in the group. Approximately 8,000 people live on the island, making their living from tourism, fishing, in government offices, or off the rich volcanic soils with some limited farming existing in the highlands. Puerto Baquerizo Moreno on the southwestern tip of the island is the capital city of the Galapagos Islands. A statue of Charles Darwin graces the harbor, marking one of the first places he likely stepped ashore in the 1830s.

Day 2 - Kicker Rock

Kicker Rock is the vertical remnant of a former tuff cone less than 5 kilometers to the west of San Cristobal. Both its Spanish name "Leon Dormido" (Sleeping Lion) and English name Kicker Rock imply that it is one rock only -when in fact it is a larger one 300 meters long by 100 meters wide with a maximum height of approximately 150 meters and next to it an obelisk-like rock separated by a narrow channel some 20 meters deep. When approaching Kicker Rock, Blue-footed Boobies, Nazca Boobies and frigatebirds can be observed in the air, while sea lions can be seen along the shore. Snorkelers and divers have reported manta rays, hammerhead sharks and turtles. The Spanish name implies that the geological formation seen from the south resembles a sleeping lion. An interesting explanation for the English name suggests that James Colnett in 1794 likened it to famous landmarks in Portsmouth.

Day 3 - Isla Bartolome

Our ship anchors in sight of the volcanic moonscape of Isla Bartolome, at Sullivan Bay. Zodiacs bring guests ashore to ascend a boardwalk of 388 steps. Passing through the arid volcanic landscape provides a chance to watch for lava lizards, Galapagos Hawks, and Blue-footed Boobies. However, the climber's ultimate reward is one of the most beautiful panoramas in all of the Galapagos Islands - the view towards Pinnacle Rock with black, volcanic cones of Baltra, Daphne Major and Daphne Minor in the distance. On the way down watch how the sunlight catches the green of pioneering plant species in stark contrast against dark volcanic rock, and look forward to time swimming and snorkeling from the golden beach.

Day 3 - Buccaneer Cove, Santiago

Buccaneer Cove is a colourful inlet on Santiago or James Island. It owes its name to some of the first visitors to the area: pirates. They came searching for water, tortoises, and some people say even places to hide their treasures. We don't know about any pirate's gold, but the area's landscape is a treasure. The geology combines some tuff red cones with impressive basalt lava dikes and sills. The erosion has carved caves and shaped some rocks into unique forms such as the Bishop's Rock. Palo Santo trees and some giant Prickly pear cactus cover the area, and at a distance, you can observe the impressive volcanoes of Isabela Island. We will explore the area from our Zodiacs, searching for sea birds such as Nazca Boobies, Blue Footed Boobies, and Swallow-tailed Gulls. We can often find sea turtles and even reef sharks in this place. Also, in Buccaneer Cove, we can observe the two sea lions species: the Galapagos sea lion basking on the beaches and the fur seal looking for shade on the collapsed rocks along the coast.

Day 4 - Punta Vicente Roca (Isabela) & Bolivar Canal Cruising

Punta Vicente Roca is one of the marine sites Isabela Island has to offer. On the southern side of Ecuador Volcano, the tip of land on the western end of Isabela is named after Vicente Ramon Roca, President of Ecuador from 1845-49, who as Prefect of Guayas had proposed the Ecuadorian annexation of the Galapagos Islands in 1831. The geological formations, the underwater caves and lava tubes offer fascinating views of the coastline. The South Equatorial Countercurrent hits this part of the archipelago from the west and the water offers abundant food sources for different marine life and seabirds. It is normal to see Pacific green turtles, but sharks, rays, whales and dolphins can also be expected, apart from a small colony of fur seals. Blue-footed Boobies, Nazca Boobies, Brown Noddies and other seabirds nest in the cliffs and both the endemic Galapagos Penguins and Flightless Cormorants have established small colonies nearby. Marine iguanas also like this area because of the rich variety of seaweeds growing underwater along the western coast of Isabela. As a marine site, deepwater snorkeling is also possible at Punta Vicente Roca.

Day 4 - Punta Espinoza, Fernandina

With the gentle slopes of La Cumbre volcano in the distance, the low, lava-forged coast of Punta Espinoza on Fernandina Island is a spectacular sight. Hundreds of marine iguanas rest on the black rock of recent lava flows absorbing heat from the stone and defending their territories against one

Wild Earth Travel

Small Ships, Big Adventures

0800 945 3327 (within New Zealand) | +64 (0) 3 365 1355 | **1800 107 715** (within Australia)

info@wildearth-travel.com | **wildearth-travel.com**



Wild Earth Travel

Small Ships, Big Adventures

wildearth-travel.com

info@wildearth-travel.com

another. Galapagos sea lions and their pups also take shelter here, resting on the beach and playing in the shallow tide pools sprinkled along the coast. Walk past high sandy areas where marine iguanas lay their eggs and along low, shallow mangrove ponds ringed with bright red Sally Lightfoot crabs and Flightless Cormorants drying their stubby wings in the sunshine.

Day 5 - Tagus Cove (Isabela)

Tagus Cove is bordered by a steep rocky coastline and has for centuries offered shelter for ships and yachts. The cove is named after the British frigate HMS Tagus visiting the Galapagos in 1814. Already by the 1830s other ships had their visits recorded by painting or scratching their name onto the rocks. On approach Galapagos Penguins and Flightless Cormorants -both birds mainly found on Isabela's west coast and neighboring Fernandina- are often seen. From the landing a trail through an incense tree forest leads past Darwin Lake to a viewpoint on top of a spatter cone. During the hike several land birds including Medium Ground-Finches, Galapagos Hawks, Yellow Warblers as well as Large-billed Flycatchers are often present. Brown Noddies and Blue-footed Boobies prefer the rocks along the shore.

Day 5 - Elizabeth Bay (Isabela)

Elizabeth Bay is one of the marine sites on Isabela's west coast. South of Alcedo Volcano and north of Sierra Negra, Elizabeth Bay is found at Isabela's narrowest east-west extension where the lava flows of these two volcanoes have connected each other. Elizabeth Bay's shores show mangroves and specifically the easternmost part, a cove which can only be entered via a narrow channel, has red, white and black mangroves. Different animals prefer different parts of Elizabeth Bay. Las Marietas, three rocks at the entrance to the bay, are favored by Blue-footed Boobies, Flightless Cormorants and Galapagos Penguins as a resting place, while the mangrove area is preferred by Great Blue Herons for hunting or the Magnificent Frigatebirds for perching. The bay is used by turtles, rays and even sharks for feeding or resting. The shallow water and the root system of the mangroves in the small inlet allow smaller fish to hide from bigger predators.

Day 6 - Post Office Bay (Floreana)

Floreana's Post Office Bay has received its name as the site was used to leave mail for retrieval by others who were thought to stop at the Galapagos Islands

or might be heading for the addressee's direction. First mentioned by Porter in 1813 as "Hathaway's Postoffice", HMS Beagle's captain FitzRoy stated that it was not in use in 1835 as the island was already settled at that time. Floreana had been the first island to be settled by Ecuadorians in 1832. Today a barrel instead of the original box is used by visitors who leave their own postcards and retrieve mail for hand-delivery. Apart from the beach and mail barrel the bay offers good swimming and snorkeling. The area holds remains of a failed Norwegian fish canning plant and settlement dating back to the 1920s. Although Floreana is inhabited, the number of residents is reduced because of the difficult access to water. A track from Post Office Bay connects with the only road from Puerto Velazco Ibarra on the west coast to a spring in the highlands.

Day 6 - Champion Islet (Floreana)

Champion Islet is a small islet some 700 meters off the northeast coast of Floreana. It is one of four marine sites surrounding Floreana and offers excellent deepwater snorkeling opportunities. Curious sea lions approach the snorkelers while turtles slowly swim by and sharks, sting rays, and a high diversity of colorful fishes can usually be seen. During a Zodiac cruise around Champion Islet not only seabirds such as Nazca Boobies, Swallow-tailed Gulls, or Red-billed Tropicbirds will be seen, it is also possible to spot the rare Floreana Mockingbird.

Day 6 - Punta Cormorant (Floreana)

Floreana Island's northernmost point is called Punta Cormorant - named after the British naval vessel HMS Cormorant and dating back to the late 19th century. From the landing beach a short track leads to a shallow lagoon that is famous for its flamingos. The brilliantly pink birds skim the salty waters for shrimp and tend to chicks on the nest. The trail then scales a low hillside through scattered Palo Santo trees to reveal an idyllic white-sand beach on the other side of the point. Standing at the edge of the lapping waves, you might spot mammoth female sea turtles hauling themselves out of the sea to lay eggs in the sugar sand dunes that lay high above the tide line. Before returning to the landing site your guides may also point out White-cheeked Pintails, Blue-footed Boobies, Yellow Warblers, and Medium and Small Ground Finches.

Day 7 - Santa Cruz Highlands

Wild Earth Travel

Small Ships, Big Adventures

0800 945 3327 (within New Zealand) | +64 (0) 3 365 1355 | **1800 107 715** (within Australia)

info@wildearth-travel.com | **wildearth-travel.com**

Wild Earth Travel

Small Ships, Big Adventures

wildearth-travel.com

info@wildearth-travel.com

Santa Cruz Island reaches a maximum altitude of 864 meters (2,835 ft) above sea level; at high altitudes, weather changes creating microclimates. The species of flora and fauna found near the shoreline are extremely different from those on the highlands. Life in the highlands is much easier due to the presence of fresh water, from the constant drizzle that happens during the dry season to heavy rains that occur during the wet season. Local people take advantage of this climate to cultivate a large number of crops and giant tortoises love this ideal weather to mate, feed and rest before their next long migration to the shorelines.

Day 7 - Fausto Llerena Breeding Center, Puerto Ayora (Santa Cruz)

Silver Origin will anchor in front of Puerto Ayora, Santa Cruz, where the prestigious Charles Darwin Research Station is located. The station also houses the Fausto Llerena Breeding Center for giant tortoises and land iguanas where guides interpret the centre's captive breeding and reintroduction programs. In addition to these star species, throughout the station there are huge prickly pear cactus trees being fed upon by the pretty Galapagos Cactus Finch. To round out the stay in Puerto Ayora, enjoy free time in town where local artists have created charming art galleries and corner cafes.

Day 8 - Cerro Dragon (Santa Cruz)

A dry landing onto volcanic rock covered by Sally light-footed crabs will welcome you as you disembark for this walk discovering Cerro Dragon. Enjoy this visit that mixes a brackish water lagoon inhabited by shorebirds, some elusive pink flamingos and a volcanic rock cover dry enough to be the perfect ecosystem for the Galapagos land iguana. Search for this iconic Galapagos inhabitant that populates this area of Santa Cruz. Your guide will be on the lookout too, helping you to recognise them whether they are resting in their burrows or next to the cacti looking for food.

Day 8 - Isla Guy Fawkes & Bahia Bowditch, Santa Cruz

Guy Fawkes is a group of four islets situated on the northwestern side of Santa Cruz Island. They are satellite cones, surrounded by deep waters. As they rise

from the deep, they intercept with the strong sea currents making the area a place full of life. These small islets have beautiful underwater cliffs covered with all sorts of marine invertebrates such as sponges, corals, sea stars, urchins -- making it a very colourful place for deep water snorkelling. Due to the conditions mentioned above, it results in some immense aggregations of fish, and, due to the depth of the water, it is not unusual to find Sharks or Manta Rays. Guy Fawkes is one of the most exciting places to deep water snorkel. You never know what you will find.

Day 9 - San Cristóbal, Galapagos

Like so many of the islands in the Galapagos, San Cristobal is formed by dormant volcanoes. It lies to the east of the archipelago and is one of the oldest islands in the group. Approximately 8,000 people live on the island, making their living from tourism, fishing, in government offices, or off the rich volcanic soils with some limited farming existing in the highlands. Puerto Baquerizo Moreno on the southwestern tip of the island is the capital city of the Galapagos Islands. A statue of Charles Darwin graces the harbor, marking one of the first places he likely stepped ashore in the 1830s.

Day 10 - Post Cruise

- _ ****Post Cruise Benefits**** _
- _ ****In-country flights/Group flights**** _
- _ ****Hotel**** _
- _ ****Airport transfers**** _
- _ ****International flights - Economy class**** _
- _ ****Private Executive Transfers**** _

Please note:

Itineraries are subject to change.

Wild Earth Travel

Small Ships, Big Adventures

0800 945 3327 (within New Zealand) | +64 (0) 3 365 1355 | **1800 107 715** (within Australia)

info@wildearth-travel.com | wildearth-travel.com

Wild Earth Travel

Small Ships, Big Adventures

wildearth-travel.com

info@wildearth-travel.com

YOUR SHIP: SILVER ORIGIN

YOUR SHIP:	Silver Origin
VESSEL TYPE:	Luxury Expedition
LENGTH:	101 metres
PASSENGER CAPACITY:	100
BUILT/REFURBISHED:	2020



The first destination specific ship built by Silverline, Silver Origin is the height of experiential travel in the Galapagos. Never before have the islands been so superbly presented: a team of Ecuadorian national expert guides, the highest crew-to-guest ratio in the Galapagos, 8 Zodiacs, seamless hybrid spaces that offer an extraordinary voyage - for extraordinary people. All-suite accommodation, Horizon Balconies, butler service, sophisticated interiors, interactive basecamp, Ecuadorian inspired cuisine ... no aspect of Silver Origin has been left to chance. The most environmentally conscious ship we have ever built, take a vertical leap and transform your idea of travel with Silver Origin.

Wild Earth Travel

Small Ships, Big Adventures

0800 945 3327 (within New Zealand) | +64 (0) 3 365 1355 | **1800 107 715** (within Australia)

info@wildearth-travel.com | **wildearth-travel.com**

Wild Earth Travel

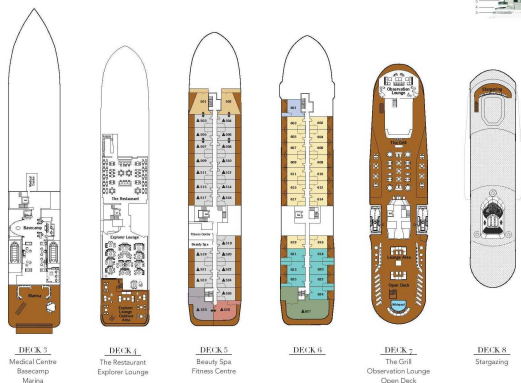
Small Ships, Big Adventures

wildearth-travel.com

info@wildearth-travel.com

INSIDE YOUR SHIP

SILVER ORIGIN Deck Plans



SUITE CATEGORIES

Owner's Suite	●
Grand Suite	●
Royal Suite	●
Silver Suite	●
Medallion Suite	●
Deluxe Veranda Suite	●
Superior Veranda Suite	●
Classic Veranda Suite	●

SPECIFICATIONS

Crew	100
Officers	10
Guests	100
Tonnage	5,800
Length	321.4 Feet / 101 Metres
Width	32.5 Feet / 10 Metres
Speed	14 Knots
Passenger Deck	4
Connecting Suites	4
301/302, 302/304, 305/307, 306/308, 309/310	4
3rd Guest Capacity	100
Built	2020
Registry	Equador

*Suites 301 and 302 are connected through a shared space.
Decorations by Renaissance Interiors and may vary for individual ships.

Classic Veranda



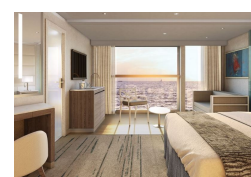
Deluxe Veranda



Grand 1 Bedroom



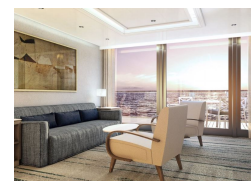
Medallion



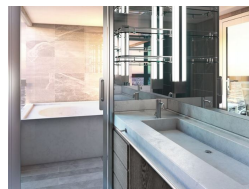
Owner 1 Bedroom



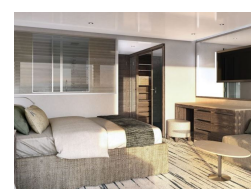
Royal 1 Bedroom



Silver



Superior Veranda



Wild Earth Travel

Small Ships, Big Adventures

0800 945 3327 (within New Zealand) | +64 (0) 3 365 1355 | 1800 107 715 (within Australia)

info@wildearth-travel.com | wildearth-travel.com

Wild Earth Travel

Small Ships, Big Adventures

wildearth-travel.com

info@wildearth-travel.com

PRICING

01-May-2025 to 11-May-2025

Classic Veranda	23400 AUD pp
Superior Veranda	25800 AUD pp
Deluxe Veranda	26900 AUD pp
Medallion	36500 AUD pp
Silver	42500 AUD pp
Royal 1 Bedroom	52500 AUD pp
Grand 1 Bedroom	64100 AUD pp
Owner 1 Bedroom	77900 AUD pp

15-May-2025 to 25-May-2025

Classic Veranda	23400 AUD pp
Superior Veranda	25100 AUD pp
Deluxe Veranda	26100 AUD pp
Medallion	33600 AUD pp
Silver	39000 AUD pp
Royal 1 Bedroom	47200 AUD pp
Grand 1 Bedroom	57300 AUD pp
Owner 1 Bedroom	63000 AUD pp

12-Jun-2025 to 22-Jun-2025

Classic Veranda	22100 AUD pp
Superior Veranda	23900 AUD pp
Deluxe Veranda	24800 AUD pp
Medallion	31800 AUD pp
Silver	36600 AUD pp
Royal 1 Bedroom	44700 AUD pp
Grand 1 Bedroom	54300 AUD pp
Owner 1 Bedroom	59700 AUD pp

26-Jun-2025 to 06-Jul-2025

Classic Veranda	23500 AUD pp
Superior Veranda	24900 AUD pp
Deluxe Veranda	25700 AUD pp
Medallion	32700 AUD pp
Silver	37400 AUD pp
Royal 1 Bedroom	45500 AUD pp
Grand 1 Bedroom	55100 AUD pp
Owner 1 Bedroom	66400 AUD pp

Wild Earth Travel

Small Ships, Big Adventures

wildearth-travel.com

info@wildearth-travel.com

PRICING

24-Jul-2025 to 03-Aug-2025

Classic Veranda	21600 AUD pp
Superior Veranda	22400 AUD pp
Deluxe Veranda	23200 AUD pp
Medallion	29100 AUD pp
Silver	34300 AUD pp
Royal 1 Bedroom	41600 AUD pp
Grand 1 Bedroom	50200 AUD pp
Owner 1 Bedroom	60400 AUD pp

07-Aug-2025 to 17-Aug-2025

Classic Veranda	22300 AUD pp
Superior Veranda	22800 AUD pp
Deluxe Veranda	23500 AUD pp
Medallion	29700 AUD pp
Silver	33900 AUD pp
Royal 1 Bedroom	41000 AUD pp
Grand 1 Bedroom	49400 AUD pp
Owner 1 Bedroom	59400 AUD pp

18-Sep-2025 to 28-Sep-2025

Classic Veranda	21600 AUD pp
Superior Veranda	22800 AUD pp
Deluxe Veranda	23900 AUD pp
Medallion	29900 AUD pp
Silver	34200 AUD pp
Royal 1 Bedroom	41500 AUD pp
Grand 1 Bedroom	50100 AUD pp
Owner 1 Bedroom	60300 AUD pp

02-Oct-2025 to 12-Oct-2025

Classic Veranda	21900 AUD pp
Superior Veranda	23700 AUD pp
Deluxe Veranda	24500 AUD pp
Medallion	31400 AUD pp
Silver	35900 AUD pp
Royal 1 Bedroom	39900 AUD pp
Grand 1 Bedroom	44900 AUD pp
Owner 1 Bedroom	49900 AUD pp

Wild Earth Travel

Small Ships, Big Adventures

0800 945 3327 (within New Zealand) | +64 (0) 3 365 1355 | **1800 107 715** (within Australia)

info@wildearth-travel.com | wildearth-travel.com

Wild Earth Travel

Small Ships, Big Adventures

wildearth-travel.com

info@wildearth-travel.com

PRICING

16-Oct-2025 to 26-Oct-2025

Classic Veranda	20700 AUD pp
Superior Veranda	22100 AUD pp
Deluxe Veranda	22800 AUD pp
Medallion	29800 AUD pp
Silver	35700 AUD pp
Royal 1 Bedroom	43300 AUD pp
Grand 1 Bedroom	52100 AUD pp
Owner 1 Bedroom	57200 AUD pp

13-Nov-2025 to 23-Nov-2025

Classic Veranda	21000 AUD pp
Superior Veranda	23300 AUD pp
Deluxe Veranda	24000 AUD pp
Medallion	31000 AUD pp
Silver	35500 AUD pp
Royal 1 Bedroom	43100 AUD pp
Grand 1 Bedroom	52200 AUD pp
Owner 1 Bedroom	57300 AUD pp

27-Nov-2025 to 07-Dec-2025

Classic Veranda	20700 AUD pp
Superior Veranda	22800 AUD pp
Deluxe Veranda	23500 AUD pp
Medallion	30500 AUD pp
Silver	35000 AUD pp
Royal 1 Bedroom	42600 AUD pp
Grand 1 Bedroom	51700 AUD pp
Owner 1 Bedroom	56800 AUD pp

11-Dec-2025 to 21-Dec-2025

Classic Veranda	20700 AUD pp
Superior Veranda	22700 AUD pp
Deluxe Veranda	23500 AUD pp
Medallion	30600 AUD pp
Silver	35100 AUD pp
Royal 1 Bedroom	42900 AUD pp
Grand 1 Bedroom	52000 AUD pp
Owner 1 Bedroom	62900 AUD pp

Wild Earth Travel

Small Ships, Big Adventures

wildearth-travel.com

info@wildearth-travel.com

PRICING

25-Dec-2025 to 04-Jan-2026

Classic Veranda	24400 AUD pp
Superior Veranda	26900 AUD pp
Deluxe Veranda	27800 AUD pp
Medallion	36800 AUD pp
Silver	42300 AUD pp
Royal 1 Bedroom	51700 AUD pp
Grand 1 Bedroom	62900 AUD pp
Owner 1 Bedroom	76100 AUD pp

08-Jan-2026 to 18-Jan-2026

Classic Veranda	22100 AUD pp
Superior Veranda	24400 AUD pp
Deluxe Veranda	25300 AUD pp
Medallion	32500 AUD pp
Silver	39200 AUD pp
Royal 1 Bedroom	47800 AUD pp
Grand 1 Bedroom	58000 AUD pp
Owner 1 Bedroom	70100 AUD pp

22-Jan-2026 to 01-Feb-2026

Classic Veranda	22100 AUD pp
Superior Veranda	24400 AUD pp
Deluxe Veranda	25300 AUD pp
Medallion	32500 AUD pp
Silver	39200 AUD pp
Royal 1 Bedroom	47800 AUD pp
Grand 1 Bedroom	58000 AUD pp
Owner 1 Bedroom	70100 AUD pp

05-Feb-2026 to 15-Feb-2026

Classic Veranda	22700 AUD pp
Superior Veranda	25000 AUD pp
Deluxe Veranda	25900 AUD pp
Medallion	33400 AUD pp
Silver	40200 AUD pp
Royal 1 Bedroom	49000 AUD pp
Grand 1 Bedroom	59400 AUD pp
Owner 1 Bedroom	71700 AUD pp

Wild Earth Travel

Small Ships, Big Adventures

wildearth-travel.com

info@wildearth-travel.com

PRICING

19-Feb-2026 to 01-Mar-2026

Classic Veranda	22300 AUD pp
Superior Veranda	24600 AUD pp
Deluxe Veranda	25500 AUD pp
Medallion	33000 AUD pp
Silver	39800 AUD pp
Royal 1 Bedroom	48600 AUD pp
Grand 1 Bedroom	59000 AUD pp
Owner 1 Bedroom	71300 AUD pp

19-Mar-2026 to 29-Mar-2026

Classic Veranda	21700 AUD pp
Superior Veranda	24000 AUD pp
Deluxe Veranda	24900 AUD pp
Medallion	32400 AUD pp
Silver	39200 AUD pp
Royal 1 Bedroom	48000 AUD pp
Grand 1 Bedroom	58400 AUD pp
Owner 1 Bedroom	70700 AUD pp

02-Apr-2026 to 12-Apr-2026

Classic Veranda	22500 AUD pp
Superior Veranda	24100 AUD pp
Deluxe Veranda	25000 AUD pp
Medallion	33700 AUD pp
Silver	39100 AUD pp
Royal 1 Bedroom	47600 AUD pp
Grand 1 Bedroom	57800 AUD pp
Owner 1 Bedroom	69800 AUD pp

16-Apr-2026 to 26-Apr-2026

Classic Veranda	22700 AUD pp
Superior Veranda	24300 AUD pp
Deluxe Veranda	25200 AUD pp
Medallion	33800 AUD pp
Silver	39100 AUD pp
Royal 1 Bedroom	47600 AUD pp
Grand 1 Bedroom	57700 AUD pp
Owner 1 Bedroom	69600 AUD pp

Wild Earth Travel

Small Ships, Big Adventures

wildearth-travel.com

info@wildearth-travel.com

PRICING

30-Apr-2026 to 10-May-2026

Classic Veranda	23000 AUD pp
Superior Veranda	24600 AUD pp
Deluxe Veranda	25500 AUD pp
Medallion	34000 AUD pp
Silver	39400 AUD pp
Royal 1 Bedroom	47900 AUD pp
Grand 1 Bedroom	58000 AUD pp
Owner 1 Bedroom	70100 AUD pp

14-May-2026 to 24-May-2026

Classic Veranda	22500 AUD pp
Superior Veranda	24100 AUD pp
Deluxe Veranda	24900 AUD pp
Medallion	33800 AUD pp
Silver	39100 AUD pp
Royal 1 Bedroom	47600 AUD pp
Grand 1 Bedroom	57700 AUD pp
Owner 1 Bedroom	69600 AUD pp

28-May-2026 to 07-Jun-2026

Classic Veranda	22600 AUD pp
Superior Veranda	24100 AUD pp
Deluxe Veranda	25000 AUD pp
Medallion	33000 AUD pp
Silver	38100 AUD pp
Royal 1 Bedroom	46400 AUD pp
Grand 1 Bedroom	56200 AUD pp
Owner 1 Bedroom	67800 AUD pp

11-Jun-2026 to 21-Jun-2026

Classic Veranda	22400 AUD pp
Superior Veranda	23900 AUD pp
Deluxe Veranda	24600 AUD pp
Medallion	32200 AUD pp
Silver	37200 AUD pp
Royal 1 Bedroom	45200 AUD pp
Grand 1 Bedroom	54600 AUD pp
Owner 1 Bedroom	65800 AUD pp

Wild Earth Travel

Small Ships, Big Adventures

0800 945 3327 (within New Zealand) | +64 (0) 3 365 1355 | **1800 107 715** (within Australia)

info@wildearth-travel.com | wildearth-travel.com

Wild Earth Travel

Small Ships, Big Adventures

wildearth-travel.com

info@wildearth-travel.com

PRICING

25-Jun-2026 to 05-Jul-2026

Classic Veranda	21300 AUD pp
Superior Veranda	22800 AUD pp
Deluxe Veranda	23600 AUD pp
Medallion	30500 AUD pp
Silver	35200 AUD pp
Royal 1 Bedroom	42900 AUD pp
Grand 1 Bedroom	51900 AUD pp
Owner 1 Bedroom	62600 AUD pp

09-Jul-2026 to 19-Jul-2026

Classic Veranda	21400 AUD pp
Superior Veranda	23000 AUD pp
Deluxe Veranda	23700 AUD pp
Medallion	29600 AUD pp
Silver	34200 AUD pp
Royal 1 Bedroom	41600 AUD pp
Grand 1 Bedroom	50300 AUD pp
Owner 1 Bedroom	60700 AUD pp

03-Sep-2026 to 13-Sep-2026

Classic Veranda	20700 AUD pp
Superior Veranda	22200 AUD pp
Deluxe Veranda	22900 AUD pp
Medallion	29000 AUD pp
Silver	33500 AUD pp
Royal 1 Bedroom	40700 AUD pp
Grand 1 Bedroom	49200 AUD pp
Owner 1 Bedroom	59200 AUD pp

17-Sep-2026 to 27-Sep-2026

Classic Veranda	20800 AUD pp
Superior Veranda	22300 AUD pp
Deluxe Veranda	23000 AUD pp
Medallion	29300 AUD pp
Silver	33900 AUD pp
Royal 1 Bedroom	41100 AUD pp
Grand 1 Bedroom	49700 AUD pp
Owner 1 Bedroom	60000 AUD pp

Wild Earth Travel

Small Ships, Big Adventures

0800 945 3327 (within New Zealand) | +64 (0) 3 365 1355 | **1800 107 715** (within Australia)

info@wildearth-travel.com | wildearth-travel.com

Wild Earth Travel

Small Ships, Big Adventures

wildearth-travel.com

info@wildearth-travel.com

PRICING

01-Oct-2026 to 11-Oct-2026

Classic Veranda	20300 AUD pp
Superior Veranda	21600 AUD pp
Deluxe Veranda	22400 AUD pp
Medallion	29300 AUD pp
Silver	33900 AUD pp
Royal 1 Bedroom	41100 AUD pp
Grand 1 Bedroom	49700 AUD pp
Owner 1 Bedroom	60000 AUD pp

15-Oct-2026 to 25-Oct-2026

Classic Veranda	21100 AUD pp
Superior Veranda	22600 AUD pp
Deluxe Veranda	23300 AUD pp
Medallion	30300 AUD pp
Silver	35000 AUD pp
Royal 1 Bedroom	42500 AUD pp
Grand 1 Bedroom	51500 AUD pp
Owner 1 Bedroom	62100 AUD pp

29-Oct-2026 to 08-Nov-2026

Classic Veranda	21400 AUD pp
Superior Veranda	23000 AUD pp
Deluxe Veranda	23700 AUD pp
Medallion	30500 AUD pp
Silver	35200 AUD pp
Royal 1 Bedroom	42900 AUD pp
Grand 1 Bedroom	51900 AUD pp
Owner 1 Bedroom	62600 AUD pp

12-Nov-2026 to 22-Nov-2026

Classic Veranda	21000 AUD pp
Superior Veranda	22500 AUD pp
Deluxe Veranda	23200 AUD pp
Medallion	29500 AUD pp
Silver	34100 AUD pp
Royal 1 Bedroom	41400 AUD pp
Grand 1 Bedroom	50100 AUD pp
Owner 1 Bedroom	60400 AUD pp

Wild Earth Travel

Small Ships, Big Adventures

wildearth-travel.com

info@wildearth-travel.com

PRICING

26-Nov-2026 to 06-Dec-2026

Classic Veranda	21300 AUD pp
Superior Veranda	22800 AUD pp
Deluxe Veranda	23600 AUD pp
Medallion	31000 AUD pp
Silver	35900 AUD pp
Royal 1 Bedroom	43600 AUD pp
Grand 1 Bedroom	52900 AUD pp
Owner 1 Bedroom	63800 AUD pp

10-Dec-2026 to 20-Dec-2026

Classic Veranda	21900 AUD pp
Superior Veranda	23500 AUD pp
Deluxe Veranda	24300 AUD pp
Medallion	31600 AUD pp
Silver	36600 AUD pp
Royal 1 Bedroom	44600 AUD pp
Grand 1 Bedroom	54000 AUD pp
Owner 1 Bedroom	65200 AUD pp

24-Dec-2026 to 03-Jan-2027

Classic Veranda	24600 AUD pp
Superior Veranda	26100 AUD pp
Deluxe Veranda	27000 AUD pp
Medallion	35900 AUD pp
Silver	41700 AUD pp
Royal 1 Bedroom	50800 AUD pp
Grand 1 Bedroom	61700 AUD pp
Owner 1 Bedroom	74700 AUD pp

07-Jan-2027 to 17-Jan-2027

Classic Veranda	23300 AUD pp
Superior Veranda	25000 AUD pp
Deluxe Veranda	25800 AUD pp
Medallion	32600 AUD pp
Silver	37600 AUD pp
Royal 1 Bedroom	45700 AUD pp
Grand 1 Bedroom	55300 AUD pp
Owner 1 Bedroom	66700 AUD pp

Wild Earth Travel

Small Ships, Big Adventures

wildearth-travel.com

info@wildearth-travel.com

PRICING

21-Jan-2027 to 31-Jan-2027

Classic Veranda	23200 AUD pp
Superior Veranda	24900 AUD pp
Deluxe Veranda	25700 AUD pp
Medallion	32600 AUD pp
Silver	37600 AUD pp
Royal 1 Bedroom	45700 AUD pp
Grand 1 Bedroom	55300 AUD pp
Owner 1 Bedroom	66700 AUD pp

04-Feb-2027 to 14-Feb-2027

Classic Veranda	23000 AUD pp
Superior Veranda	24600 AUD pp
Deluxe Veranda	25400 AUD pp
Medallion	33100 AUD pp
Silver	38200 AUD pp
Royal 1 Bedroom	46500 AUD pp
Grand 1 Bedroom	56300 AUD pp
Owner 1 Bedroom	67900 AUD pp

18-Feb-2027 to 28-Feb-2027

Classic Veranda	23000 AUD pp
Superior Veranda	24600 AUD pp
Deluxe Veranda	25400 AUD pp
Medallion	33100 AUD pp
Silver	38200 AUD pp
Royal 1 Bedroom	46500 AUD pp
Grand 1 Bedroom	56300 AUD pp
Owner 1 Bedroom	67900 AUD pp

04-Mar-2027 to 14-Mar-2027

Classic Veranda	23600 AUD pp
Superior Veranda	25300 AUD pp
Deluxe Veranda	26100 AUD pp
Medallion	33800 AUD pp
Silver	39100 AUD pp
Royal 1 Bedroom	47600 AUD pp
Grand 1 Bedroom	57700 AUD pp
Owner 1 Bedroom	69600 AUD pp

Wild Earth Travel

Small Ships, Big Adventures

0800 945 3327 (within New Zealand) | +64 (0) 3 365 1355 | **1800 107 715** (within Australia)

info@wildearth-travel.com | wildearth-travel.com



Wild Earth Travel

Small Ships, Big Adventures

wildearth-travel.com

info@wildearth-travel.com

PRICING

18-Mar-2027 to 28-Mar-2027

Classic Veranda	23900 AUD pp
Superior Veranda	25600 AUD pp
Deluxe Veranda	26500 AUD pp
Medallion	34200 AUD pp
Silver	39600 AUD pp
Royal 1 Bedroom	48200 AUD pp
Grand 1 Bedroom	58400 AUD pp
Owner 1 Bedroom	70500 AUD pp

Wild Earth Travel

Small Ships, Big Adventures

0800 945 3327 (within New Zealand) | +64 (0) 3 365 1355 | **1800 107 715** (within Australia)

info@wildearth-travel.com | **wildearth-travel.com**