



Wild Earth Travel

Small Ships, Big Adventures

wildearth-travel.com

info@wildearth-travel.com

A SYMPHONY AT SEA: THE MUSICAL TRADITIONS OF GREECE CRUISE

This cruise is part of a collection of PONANT themed voyages that are specially-tailored for English-speaking travelers who want to engage with the world. In addition to the usual elements of the PONANT experience, the listed price for these voyages includes transfers to and from the ship, talks and discussions aboard ship by world class experts, and a shore excursion or activity in each port of call that encourages guests to embrace the sights, sounds, tastes, and smells of the local environment and culture.

The towns visited on this voyage through Greece are at the center of cultures that have flourished here since before historical time. Join us aboard _Le Champlain_ as we sail among the Greek Isles of the Aegean Sea, discovering a sense of celebration at the heart of the Greek tradition through specially curated excursions ashore and musical performances aboard ship from a group of world-class musicians led by Boston Pops conductor Keith Lockhart. Your musicians include pianist Jihye Chang, cellist Alistair MacRae, soprano Allison Pohl, violist Scott Rawls, violinist Wendy Rawls, and violinist Benjamin Sung.

In the southern Aegean Sea, set off from Athens to discover Crete from the capital, Heraklion , built on a hillside overlooking the port and surrounded by impressive Venetian walls. Explore the Bronze age archaeological site of the Palace of Knossos , a major center of Minoan civilization. Or, in the village of Arolithos , discover Cretan traditions and customs. You may enjoy local snacks while attending a performance of traditional folkloric

Cretan & Greek dances

Santorini offers a choice between browsing the sundrenched shops and restaurants of Thira and Oia, perched on cliffs overlooking the caldera of an ancient volcano, or exploring the Bronze Age site of Akrotiri , destroyed by a massive eruption of that volcano in the 2nd millennium BC, but preserved in ash and pumice just like Pompeii. Alternatively, at the Symposium Music & Mythology Cultural Center, which is dedicated to the preservation of Greek cultural heritage, take part in an immersive experience of music, art, and mythology, including a musical performance and exhibition of traditional Greek instruments.

Next is the medieval town of Rhodes, whose labyrinthine streets and splendid plazas are the legacy of the Crusader Knights of St. John. Enjoy an exploration of the Acropolis of Lindos , which has been used since the 6th century B.C. as a citadel and place of worship successively by Greeks, Romans, Byzantines, the Knights of St. John, and the Ottomans.

Amorgos represents a completely different aspect of life in the Aegean as it brings you face to face with age-old traditions of olive cultivation, herbal medicine, and religious devotion as they are still practiced in small villages in the mountains.

The island of Delos was sacred to the ancient Greeks--the birthplace of Apollo and Artemis, and home to countless shrines and temples --a veritable open-air museum. Mykonos , by

Wild Earth Travel

Small Ships, Big Adventures

0800 945 3327 (within New Zealand) | +64 (0) 3 365 1355 | **1800 107 715** (within Australia)

info@wildearth-travel.com | **wildearth-travel.com**

Wild Earth Travel

Small Ships, Big Adventures

wildearth-travel.com

info@wildearth-travel.com

contrast, is a sophisticated island resort with smart cafes and boutiques, where you will enjoy an afternoon and evening at leisure to soak in all that this dazzling town has to offer.

Although it has been a retreat for Greek celebrities since the 1950s, when Maria Callas and Aristotle Onassis made it famous, Hydra maintains its traditional character--in large part, because no motorized vehicles are allowed. Your walking tour of the island includes the Historical Archives Museum and the Church of the Dormition, but focuses on the Koundouriotis Mansion, a splendid example of traditional local architecture, displaying a variety of artifacts and family heirlooms of the wealthy shipowner who built the house at end of the 18th century.

Your voyage ends back in Athens.



in Athens.

ITINERARY

Day 1 - Athens

The Greek capital city is located on the edge of the Saronic gulf, in the east of the country. It bears a plural name in reference to the first villages that surround the Acropolis. You will be enchanted by the rocky plateau presided by its monuments listed as UNESCO World Heritage. In the city below, you can visit some of the liveliest districts in Athens: Plaka, with its maze of colourful streets, and where, in the evenings the drifting aroma of moussaka and garlic prawns will tickle your taste buds. The National Archaeological museum and the Cycladic Art Museum are also some of the city's key attractions and allow visitors to discover Athens' cultural past.

Day 2 - Heraklion, Crete

Heraklion, the capital of Crete, is the island's most populous city. The hustle and bustle of this seaport is an integral part of its charm. It is built on a hillside overlooking the port and is encircled by impressive Venetian walls. From the top of these, you will be able to enjoy one of the most beautiful views of the city. The old town is teeming with small shops, squares, cafes and vibrant architectural evidence of the city's long history. The Palace of Knossos illustrates the wealth and power of its legendary sovereign, King Minos. The archaeological museum houses one of the largest collections of Minoan artefacts and is worth a visit.

Day 3 - Santorini

The spectacular volcanic island of Santorini stands out proud in the Cyclades. Its basalt cliffs offer particularly expansive views of the Aegean. To enjoy these views, you can head for the capital, Fira. Its floral belvederes of bougainvillea provide a bird's-eye view of several thousand metres of coastline. Further away, the gorgeous village of Oia looks like a stairway of blue and white houses on the slopes of the volcano. In the south of the island, you will be able to visit the stunning ruins of Akrotiri, an ancient city destroyed by an eruption and covered with a thick layer of lava stone.

Wild Earth Travel

Small Ships, Big Adventures

0800 945 3327 (within New Zealand) | +64 (0) 3 365 1355 | **1800 107 715** (within Australia)

info@wildearth-travel.com | **wildearth-travel.com**



Wild Earth Travel

Small Ships, Big Adventures

wildearth-travel.com

info@wildearth-travel.com

Day 4 - Rhodes

With its particularly agreeable climate, the island of Rhodes invites you to walk its pathways and discover its immaculate villages and sumptuous medieval city, a UNESCO World Heritage site. At the centre of the island the mountains are covered in forest and on the western slopes we find vineyards and crops. Rhodes also owes much of its charm and its character to the Knights of St John who reigned over the island from 1310 to 1522 and built impressive defensive walls punctuated with majestic gateways. Do not miss this delightful island with its peaceful beaches and its large walkways, perpetuating the myth of the famous Colossus, the legendary statue that is one of the Seven Wonders of the World.

Day 5 - Amorgos

It's no accident that the island of Amorgos was chosen as a shooting location for Luc Besson's film, *The Big Blue*. You too will fall under the charm of this island as your ship edges closer. Amorgos is the most easterly island in the Cyclades and stands out for its rocky inlets with crystal-clear water and its small, picturesque villages. This port of call will be your chance to visit one of the prettiest villages in the Cyclades, Chora, and discover its cobbled streets and whitewashed houses overlooked by a castle. Byzantine churches, windmills and courtyards brimming with flowers complete this typical tableau of timeless Greece.

Day 5 - Delos

This legendary Cyclades island of Delos stands just a few miles southwest of Mykonos. The ceremonial solemnity of this ancient holy sanctuary will not leave you indifferent. The sheer size and importance of this UNESCO World Heritage site which covers over half of the island is thrilling in itself. From the Stoa of Antigonos, the Terrace of the Lions, to the carved marble animal statues, you will make discovery after discovery, against a backdrop of the Aegean stretching to the horizon. The theatre steps on the hillside are a particularly good place from which to enjoy the expansive view.

Day 6 - Mykonos

Nicknamed "little Venice", Mykonos is famous for its Alefkandra district where houses are built right on the water's edge. Their multi-coloured loggias are emblematic of this Cyclades island, as are the pelicans and windmills. You can get close up to the birds on the quaysides of the old port. Up on the hillside, you can see the windmill sails turning. In the cobbled streets of the pedestrian centre, bougainvillea bedeck immaculate facades. As you weave in and out of the little streets, snatches of coastline will undoubtedly call you to the island's beaches, the quietest of which can be found on the northern coast.

Day 7 - Hydra

This unusual gem belonging to the Saronic islands is located to the east of the Peloponnese. There are no cars here. Named after the island, the harbour town is layered up the slopes of a mountainous bay. You may be surprised to see beautiful stone mansions. These are traditional here, as are the multi-coloured caiques along the quays. Further along the shore, you will discover the Historical Archives Museum. Collections from Athens National History Museum are exhibited in the elegant villa Koundouriotis.

Day 8 - Athens

The Greek capital city is located on the edge of the Saronic gulf, in the east of the country. It bears a plural name in reference to the first villages that surround the Acropolis. You will be enchanted by the rocky plateau presided by its monuments listed as UNESCO World Heritage. In the city below, you can visit some of the liveliest districts in Athens: Plaka, with its maze of colourful streets, and where, in the evenings the drifting aroma of moussaka and garlic prawns will tickle your taste buds. The National Archaeological museum and the Cycladic Art Museum are also some of the city's key attractions and allow visitors to discover Athens' cultural past.

Please note:

Itineraries are subject to change.

Wild Earth Travel

Small Ships, Big Adventures

0800 945 3327 (within New Zealand) | +64 (0) 3 365 1355 | **1800 107 715** (within Australia)

info@wildearth-travel.com | **wildearth-travel.com**



Wild Earth Travel

Small Ships, Big Adventures

wildearth-travel.com

info@wildearth-travel.com

YOUR SHIP: LE CHAMPLAIN

YOUR SHIP:	Le Champlain
VESSEL TYPE:	Luxury
LENGTH:	127 metres
PASSENGER CAPACITY:	92 cabins
BUILT/REFURBISHED:	2017/2018

Featuring innovative and environmentally-friendly equipment, elegantly designed cabins, spacious suites with large windows, and lounge areas that open onto the outside, this new limited-capacity yacht boasting just 92 cabins and suites will offer you a truly unique cruising experience.

As the first ship in a new series, Le Champlain will embody the unique atmosphere that is the cruise line's hallmark: a subtle blend of refinement, intimacy and comfort.

Aboard this ship that flies the French flag, you will experience the incomparable pleasure of an intimate cruise, with the possibility of exploring an ever-increasing range of destinations in an ethnic-chic ambiance with luxury service.

Experience a luxurious setting where the accent is on authenticity and passion for travel.

RESTAURANTS

As it is an essential part of French culture, gastronomy will naturally have pride of place aboard this new ship. Through its two restaurants, Le Champlain will invite you on a journey to elegance and epicureanism.

In a relaxed atmosphere, a first dining area located on Deck 3 and able to seat 70 will serve grilled meats daily, along with a

variety of salads and desserts.

To the back of Deck 4, you will find a 260 m² panoramic restaurant which can accommodate all of our passengers in a single sitting. Designed differently to that on our other ships, this dining area, which opens onto the outside, will have a buffet of salads, desserts and cheeses at your disposal. Our discreet and attentive crew will provide table service for hot meals.

PUBLIC AREAS

Like Le Boreal and its sisterships, Le Champlain has many common areas that are designed and equipped to meet all of your needs while preserving the intimacy of each passenger.

A 140 m² reception area includes: A reception/concierge desk, An excursions desk, The ship's administrative services, The sales office, manned by our Guest Relations Officer, Our 50 m² boutique which sells clothing, jewellery, beauty products, postcards and various accessories, Toilets accessible to passengers with reduced mobility.

A new hydraulic platform with adjustable height provides: Easier boarding than on any other cruise ship, Easier Zodiac embarkation and disembarkation for expeditions, Easier access to the sea for swimming and practising various water sports such as kayaking or paddle-boarding.

A pool deck offering: A pool with a panoramic view, equipped with a counter-current swimming system, A pleasant solarium, An outdoor bar and lounge with armchairs and sofas.

A 200 m² main lounge which can accommodate all of our passengers to share convivial moments and to host activities organised during the day or evening.

Lastly, a theatre that seats 188, equipped with: The latest



Wild Earth Travel

Small Ships, Big Adventures

0800 945 3327 (within New Zealand) | +64 (0) 3 365 1355 | **1800 107 715** (within Australia)

info@wildearth-travel.com | **wildearth-travel.com**



Wild Earth Travel

Small Ships, Big Adventures

wildearth-travel.com

info@wildearth-travel.com

sound and lighting technology, A LED wall as the stage backdrop, for the projection of high-resolution images and videos.



and videos.

Wild Earth Travel

Small Ships, Big Adventures

0800 945 3327 (within New Zealand) | +64 (0) 3 365 1355 | **1800 107 715** (within Australia)

info@wildearth-travel.com | **wildearth-travel.com**

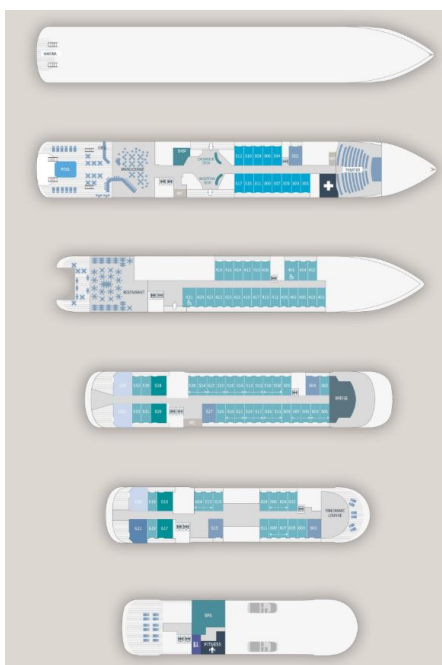
Wild Earth Travel

Small Ships, Big Adventures

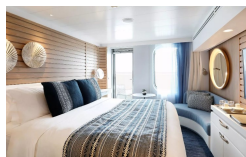
wildearth-travel.com

info@wildearth-travel.com

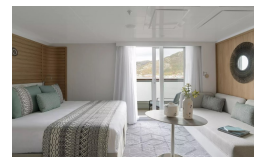
INSIDE YOUR SHIP



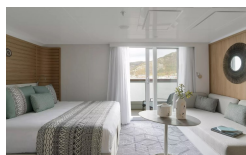
Deluxe Stateroom



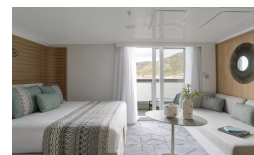
Deluxe Suite Deck 3



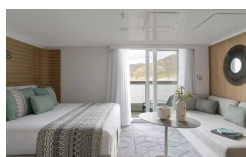
Deluxe Suite Deck 4



Deluxe Suite Deck 5



Deluxe Suite Deck 6



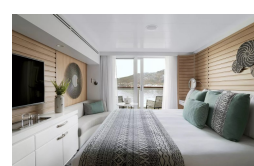
Grand Deluxe Suite Deck 5



Grand Deluxe Suite Deck 6



Prestige Deck 4



Wild Earth Travel

Small Ships, Big Adventures

0800 945 3327 (within New Zealand) | +64 (0) 3 365 1355 | 1800 107 715 (within Australia)

info@wildearth-travel.com | wildearth-travel.com



Wild Earth Travel

Small Ships, Big Adventures

wildearth-travel.com

info@wildearth-travel.com

PRICING

18-Oct-2026 to 25-Oct-2026

Deluxe Stateroom	10830 AUD pp
Prestige Deck 4	11380 AUD pp
Prestige Deck 5	11910 AUD pp
Prestige Deck 6	12580 AUD pp
Deluxe Suite Deck 6	20140 AUD pp
Deluxe Suite Deck 5	20140 AUD pp
Deluxe Suite Deck 4	20140 AUD pp
Deluxe Suite Deck 3	20140 AUD pp
Prestige Deck 5 Suite	22330 AUD pp
Prestige Deck 6 Suite	22880 AUD pp
Privilege Suite Deck 6	23980 AUD pp
Privilege Suite Deck 5	23980 AUD pp
Grand Deluxe Suite Deck 6	28900 AUD pp
Grand Deluxe Suite Deck 5	28900 AUD pp



Wild Earth Travel
Small Ships, Big Adventures

0800 945 3327 (within New Zealand) | +64 (0) 3 365 1355 | **1800 107 715** (within Australia)

info@wildearth-travel.com | **wildearth-travel.com**



Wild Earth Travel

Small Ships, Big Adventures

wildearth-travel.com

info@wildearth-travel.com

SPECIAL OFFERS

Online prices reflect the current brochure fare savings of up to 30%. Prices may change based on demand. Terms and conditions apply. This special offer is subject to availability. Please contact us for more details.

Wild Earth Travel

Small Ships, Big Adventures

0800 945 3327 (within New Zealand) | +64 (0) 3 365 1355 | **1800 107 715** (within Australia)

info@wildearth-travel.com | **wildearth-travel.com**