

Wild Earth Travel

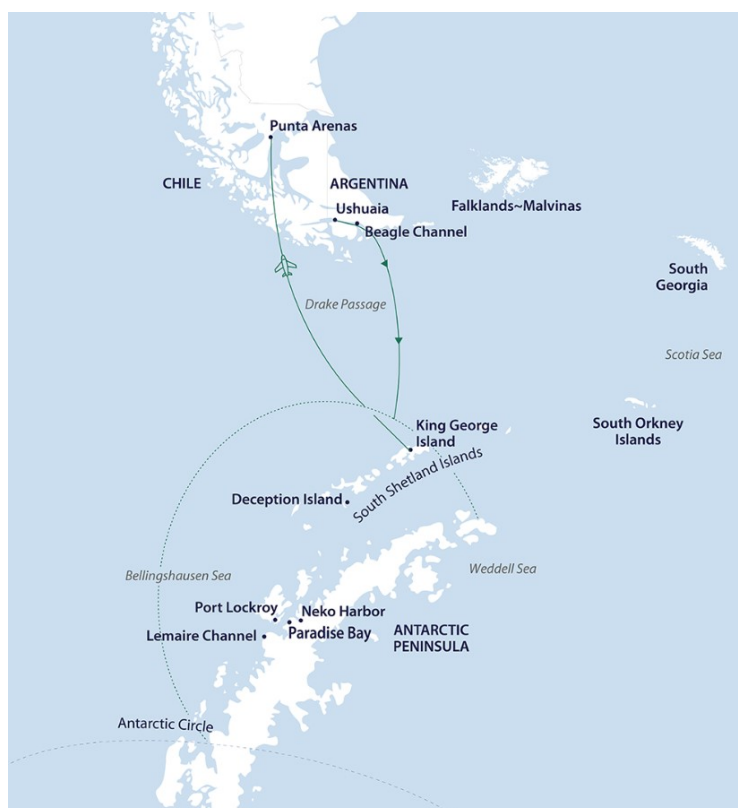
Small Ships, Big Adventures

wildearth-travel.com

info@wildearth-travel.com

ACROSS THE ANTARCTIC CIRCLE - FLY AND SAIL EXPEDITION

Venturing below the Antarctic Circle is about more than just earning bragging rights. It is the chance to enter a different world more rarely seen, it feels more isolated and colder than further north, with great swathes of pack-ice and dreamlike icebergs. Thread through pack ice and narrow channels where scenes of ice-clad mountains, feeding whales and lively penguin colonies become lasting memories.



ITINERARY

Day 1 Arrive Ushuaia

Arrive in Ushuaia, where you will be met by a representative of Aurora Expeditions and transferred with your fellow expeditioners to your assigned pre-voyage hotel. If you are already in Ushuaia, we ask you to make your way to your hotel. Check-in is from 3.00 pm. This afternoon, visit the Aurora

Wild Earth Travel

Small Ships, Big Adventures

0800 945 3327 (within New Zealand) | +64 (0) 3 365 1355 | **1800 107 715** (within Australia)

info@wildearth-travel.com | **wildearth-travel.com**



Wild Earth Travel

Small Ships, Big Adventures

wildearth-travel.com

info@wildearth-travel.com

Expeditions hospitality desk in the hotel lobby, between 3.00 pm and 7.00 pm, to collect your luggage tags, and confirm if you wish to join our Beagle Channel and Isla de Los Lobos Cruise (sea lion island) tomorrow. Our team will confirm details regarding your embarkation day, answer any questions and provide you with information on where to dine or purchase last minute items.

Expeditioners arriving after 7.00 pm will find a welcome pack waiting for them at check-in. We ask you to visit our hospitality desk tomorrow between 8.00 am - 10.00 am.

The remainder of your time is at leisure. All meals today are at your own expense.

Day 2 Embarkation

This morning, enjoy breakfast and check-out. Please ensure your cabin luggage is fitted with cabin tags clearly labelled with your name and cabin number. Take your cabin luggage to hotel reception, prior to, or at check-out. Your luggage will be stored and transferred directly to the port for clearance, to be placed in your cabin ahead of your arrival on board. Please keep any valuables or personal items with you throughout the day.

Your morning is at leisure to explore Ushuaia.

Those wishing to join our afternoon catamaran cruise, meet back at the hotel lobby at 12.45 pm ready to transfer to the port at 1.00 pm. Here we board our catamaran and sail the Beagle Channel, towards the city's iconic Les Eclaireurs Lighthouse. Crossing the Bridges Archipelago we'll slow down to watch colonies of sea lions and imperial cormorants sun themselves on the rocky outcrops, while gulls, rock cormorants, skuas, petrels, albatrosses and cauquenes are often sighted. Our cruise offers panoramic views of the city and the surrounding mountain range, in addition to hearing tales of the people and communities of the region.

Alternatively, enjoy your day at leisure and meet at your hotel lobby at 3.45 pm to be transferred to the pier for embarkation.

Once onboard, you'll have time to settle into your cabin before our important mandatory briefings. As the ship pulls away from port, we'll gather on the deck to commence our adventure with spectacular views over Ushuaia and Tierra del Fuego.

This evening get to know your fellow expeditioners and friendly expedition team and crew at a welcome dinner to celebrate the start of a thrilling adventure to Antarctica.

Days 3-4 Drake Passage crossing

As we commence the Drake Passage crossing, we make the most of our time getting comfortable with the motions of the sea. Our expedition team prepare you for our first landing with important wildlife guidelines and biosecurity procedures and start our lecture program to help you learn more about Antarctica's history, wildlife and environment.

Our wildlife experiences begin as we enjoy watching and photographing the many seabirds, including majestic albatrosses and giant petrels following our vessel. On sea days, you can enjoy the facilities on board the vessel including the gym, sauna and jacuzzis or relax in one of the observation lounges.

Nearing the South Shetland Islands and the tip of the Antarctic Peninsula on the afternoon of day four, the excitement is palpable with everyone converging on one of the observation decks watching for our first iceberg. The ocean takes on a whole new perspective once we are below the Antarctic Convergence and are surrounded by the surreal presence of floating ice sculptures. The memory of your first big iceberg sighting is likely to remain with you for a lifetime. Time and weather permitting, we may attempt our first landing in Antarctica by late afternoon.

Days 5-11 Antarctic Peninsula & Antarctic Circle

It's almost impossible to describe the feeling of arriving in Antarctica. Spotting your first iceberg and taking a deep breath of some of the most fresh, crisp air on earth is an experience that will stay with you forever.

Once we arrive, the western side of the Antarctic Peninsula and the South Shetland Islands are ours to explore, and we have a host of choices available to us. Because we are so far south, we will experience approximately 18-24 hours of daylight and the days can be as busy as you wish.

Wild Earth Travel

Small Ships, Big Adventures

wildearth-travel.com

info@wildearth-travel.com

Your experienced expedition team, who have made countless journeys to this area, will use their expertise to design your voyage from day to day, choosing the best options based on the prevailing weather, ice conditions and wildlife opportunities.

We generally make landings or Zodiac excursions twice a day. You will want to rug up before joining Zodiac cruises along spectacular ice cliffs or among grounded icebergs, keeping watch for whales, seals and porpoising penguins. Zodiacs will also transport you from the ship to land, where you can visit penguin rookeries, discover historic huts and explore some of our favourite spots along the peninsula.

While ashore we aim to stretch our legs, wandering along pebbly beaches or perhaps up snow-covered ridgelines to vantage points with mountains towering overhead and ice-speckled oceans below. If you have chosen an optional activity, you will have the option to do that whenever conditions allow, and of course keen polar plungers will have the chance to fully immerse themselves in polar waters - conditions permitting!

In addition to Zodiac cruises and shore excursions, we may ship cruise some of the narrow, dramatic straits separating offshore islands from the mainland, or linger in scenic bays to watch whales travelling or feeding. This is a great time to enjoy the observation lounge or make your way to the bridge for uninterrupted views of Antarctica in all its splendour. Keep an ear out for the creak and deep rumble of glaciers as they carve their way from summit to sea. Take a quiet moment to experience the wonder of this incredible white continent.

On this voyage, conditions permitting, we plan to cross the Antarctic Circle, an imaginary line located at the Antarctic Circle at latitude 66°33' South (approximately). Crossing below The Circle is certainly a special highlight for many people, and the moment will be celebrated with a toast out on the deck (weather permitting). You have earned some boasting privileges, joining a small group of lucky adventurers who have ventured to this part of the world.

As we approach and cross the Antarctic Circle, you will notice subtle changes in the landscape, and also in the distribution of wildlife. The waters at this time of year are rich with krill and we hope to see plenty of whales - particularly humpbacks and minke and enjoy the spectacle of penguins feeding their ravenous chicks.

Day 12 Fly King George Island to Punta Arenas

As we approach Frei Base on King George Island, it is time to farewell Antarctica and our amazing adventure before boarding our flight (approximately one hour and forty-five minutes) to Punta Arenas, Chile. There is time for reflection and discussion about what we have seen and experienced. We hope you become ambassadors for Antarctica telling your family, friends and colleagues about your journey to this magical place, advocating for its conservation and preservation so that they might one day visit the region to experience what you have been lucky to see and do here.

In Punta Arenas airport, you will be transferred to our group hotel for an overnight stay.

Note: King George Island is located at the northern tip of the Antarctic Peninsula in the South Shetland Islands and is one of the most remote places on Earth. A clear sky with perfect visibility is required for safe take-off and landing. We apologise in advance for any possible delays.

Accommodation: Hotel Cabo de Hornos or Hotel Dreams

Day 13 Depart Punta Arenas

After breakfast, bid a fond farewell to your fellow travellers as we continue our onward journeys, hopefully with a newfound sense of the immense power of nature (breakfast included). A transfer to the airport is included in the voyage fare.

Note: Should your flight not proceed due to local conditions; you will remain on the ship until it is deemed achievable to return to Punta Arenas. Refer to our terms and conditions for further details.

Please note:

Itineraries are subject to change.

Wild Earth Travel

Small Ships, Big Adventures

0800 945 3327 (within New Zealand) | +64 (0) 3 365 1355 | **1800 107 715** (within Australia)

info@wildearth-travel.com | wildearth-travel.com

Wild Earth Travel

Small Ships, Big Adventures

wildearth-travel.com

info@wildearth-travel.com

YOUR SHIP: SYLVIA EARLE

YOUR SHIP:	Sylvia Earle
VESSEL TYPE:	Luxury Expedition
LENGTH:	104 meters
PASSENGER CAPACITY:	126
BUILT/REFURBISHED:	2020/2021

Due to sail in October 2021 our new ship honours the highly accomplished marine biologist, oceanographer and explorer, Sylvia Earle. As the first female chief scientist of the U.S. National Oceanic and Atmospheric Administration, and named by Time Magazine as its first Hero for the Planet in 1998 - this vessel pays tribute to Sylvia's long standing conservation efforts for marine protected areas and ocean wildlife. Sylvia Earle will be actively involved in the development of her namesake.

Designed for rugged, remote areas Crossing the notorious Drake Passage or the Denmark Strait, our expeditions face some of the most intense conditions nature can throw at us. The Sylvia Earle is at the cutting edge of nautical technology: robust, powerful and up to the task.

Ulstein X-BOW® & Lounge The streamlined Ulstein X-BOW® cuts through the swell so you feel fewer vibrations and disturbances, and makes quicker transits through waves. It also helps reduce our fuel consumption by up to 60%^1. Experience the Glass Atrium Lounge inside the bow, featuring huge windows and superb views to the front of the ship.

Swimming pool & wellness centre In between landings, enjoy the heated saltwater open air swimming pool and jacuzzis on

board the Sylvia Earle and watch the world go by, or experience our gym, sauna or enjoy a massage (additional cost) in the Wellness centre.

Safety features The Sylvia Earle will feature industry-leading safety technology that exceeds the requirements for a ship of this size with a world class return-to-port equipment, which duplicates the propulsion system, enabling the ship to maintain operating systems and comfort in the event of engine failure. The ship will also feature a fully-stocked medical clinic designed for use in remote areas.

Responsible travel features We believe that preserving and protecting the environment is of the utmost importance and this is reflected in several features of the Sylvia Earle. The Sylvia Earle will boast one of the lowest polluting marine engines in the world due to low energy consumption, high fuel-efficiency and a streamlined design to deliver an 80% reduction in emissions. The ship can also utilise virtual anchoring to hold its position using a combination of GPS, steering technology, propellers and thrusters. This protects the sea floor and minimises the damage caused by conventional anchors.

Zodiac launching platforms Our ships carry many Zodiacs, which you can board via four dedicated, sea-level launching platforms. These platforms make boarding the Zodiacs as quick, efficient and safe as possible, minimising wait times and getting you closer to the action for longer. Whether you're Zodiac cruising through awe-inspiring fjords in search of wildlife or making a quick transit from ship to a shore landing site, these sturdy crafts will play an integral role in your expedition experience.

Activity preparation area We offer a range of add-on adventure



Wild Earth Travel

Small Ships, Big Adventures



wildearth-travel.com

info@wildearth-travel.com

activities from kayaking and diving to climbing and ski touring, and your ship is designed to support these activities, making the transition from ship to sea or shore as smooth as possible. We built the spacious activity preparation areas and loading platforms in consultation with our expert activity guides. You will also have access to lockers and rapid drying areas for dry suits and wet suits, to give your gear the best chance to dry between excursions.



excursions.



Wild Earth Travel

Small Ships, Big Adventures

0800 945 3327 (within New Zealand) | +64 (0) 3 365 1355 | **1800 107 715** (within Australia)

info@wildearth-travel.com | **wildearth-travel.com**

Wild Earth Travel

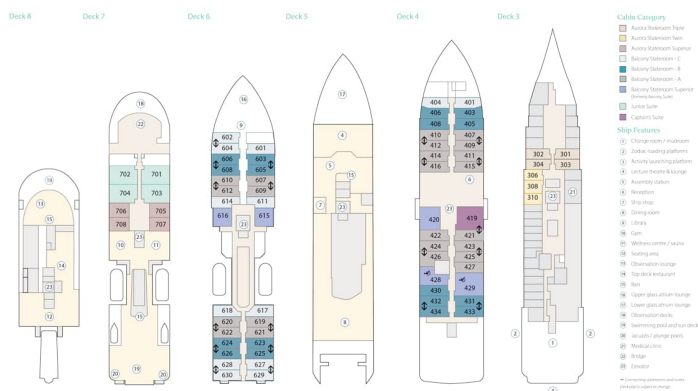
Small Ships, Big Adventures

wildearth-travel.com

info@wildearth-travel.com

INSIDE YOUR SHIP

The Sylvia Earle Deck Plan



Aurora Stateroom Superior



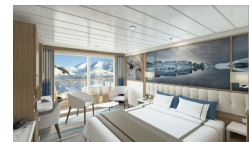
Aurora Stateroom Triple Share



Balcony Stateroom Category A



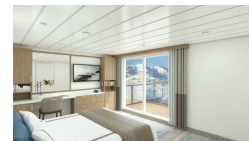
Balcony Stateroom Category B



Balcony Stateroom Category C



Balcony Stateroom Superior



Captain's Suite



Junior Suite



Wild Earth Travel

Small Ships, Big Adventures

wildearth-travel.com

info@wildearth-travel.com

PRICING

29-Jan-2026 to 10-Feb-2026

Aurora Stateroom Triple Share	19195 USD pp
Aurora Stateroom Superior	20895 USD pp
Balcony Stateroom Category C	21395 USD pp
Balcony Stateroom Category B	22495 USD pp
Balcony Stateroom Category A	24195 USD pp
Balcony Stateroom Superior	26495 USD pp
Junior Suite	33195 USD pp
Captain's Suite	39395 USD pp

13-Feb-2027 to 25-Feb-2027

Aurora Stateroom Triple Share	22095 USD pp
Aurora Stateroom Superior	23995 USD pp
Balcony Stateroom Category C	24695 USD pp
Balcony Stateroom Category B	25995 USD pp
Balcony Stateroom Category A	27895 USD pp
Balcony Stateroom Superior	30495 USD pp
Junior Suite	36295 USD pp
Captain's Suite	41495 USD pp

Optional extras & upgrades

Sea Kayaking. From 1330 USD

Snorkelling. From 675 USD

Paddling. From 640 USD

Wild Earth Travel
Small Ships, Big Adventures

0800 945 3327 (within New Zealand) | +64 (0) 3 365 1355 | **1800 107 715** (within Australia)

info@wildearth-travel.com | wildearth-travel.com