

Wild Earth Travel

Small Ships, Big Adventures

wildearth-travel.com

info@wildearth-travel.com

ANAKONDA AMAZON 8 DAY WEDNESDAY CRUISE

This journey takes us into the endless heart of biodiversity, the Amazon Basin. Our First-Rate River Cruise Vessel makes it possible for you to explore the remote nature of this jungle in total comfort and leisure. The Anakonda Amazon Cruise is our state-of-the-art vessel specifically designed to navigate on the Napo River in the Ecuadorian Amazon. Our wide array of onboard services and amenities will ensure your full comfort and enjoyment as you explore this region of the world. The Anakonda Amazon Cruise, winner of the World Travel Award as South America's Leading Boutique Cruise, offers an exclusive experience characterized by comfort, exceptional culinary offerings and once-in-a-lifetime journeys involving Amazonian cultural immersion, unique and vibrant wildlife, and the unrivaled wonders of its many ecosystems. In this rich and diverse environment, we have the chance to observe enchanting animals such as the pink river dolphin, giant otters, and turtles, as well as hundreds of native birds and primates, while navigating along the region's freshwater rivers, both white-water and black-water. Our guests will enjoy Ecuador's pristine Amazon region in total comfort on board with our first-class facilities: 14 Standard Suites offering spacious accommodations, air conditioning, private bathrooms with hot water, French balconies and ceiling-to-floor windows. Our 4 Deluxe Suites come complete with all of the above, plus private balconies and private whirlpool bathtubs. We invite you aboard to experience our cozy Bar and Lounge, Conference Room and Reading Room featuring breathtaking views; our Al Fresco Shaded Lounge, Panoramic View Restaurant and Outdoors Hot Tub on the vessel's top deck. We also have a Boutique and

concierge for a journey that is both relaxing and exhilarating! We are committed to caring for natural resources and the conservation of local cultures by applying responsible and sustainable tourism practices and community involvement in all of our operations. We have also developed Capi's Amazon River Program (CARP), two non-profit sustainable rescue programs for endangered animals in the Ecuadorian Amazon rainforest: the charapas turtle and the pink river dolphin.

Shorter 4- and 5-day cruises are available. Please contact us for more information.



formation.

ITINERARY

DAY 1 WEDNESDAY: QUITO - COCA - NAPO RIVER

Our adventure begins in Quito, the capital of Ecuador. After a 30-minute flight from Quito to the Amazonian city of Coca, we will transfer to the dock and board our motorized canoe for a 90-minute journey down the river, taking in the beauty of the Amazon, until we reach the Anakonda Amazon Cruise and receive our warm welcome aboard. On the Anakonda, we will be joined by

Wild Earth Travel

Small Ships, Big Adventures

0800 945 3327 (within New Zealand) | +64 (0) 3 365 1355 | 1800 107 715 (within Australia)

info@wildearth-travel.com | wildearth-travel.com



Wild Earth Travel

Small Ships, Big Adventures

wildearth-travel.com

info@wildearth-travel.com

expert local naturalist guides, who will provide us with a brief, informative introduction to the Ecuadorian Amazon; and afterwards guests will have the opportunity to explore our cruise ship and admire the rainforest landscape as we glide down the Napo River. After a delicious dinner, we will take a nighttime forest walk to hear the sounds of the rainforest and observe the nocturnal wildlife.

DAY 2 THURSDAY: HOME OF THE LEGENDARY PINK DOLPHIN AND THE SECOYA COMMUNITY

In the morning we will explore the lower part of the Napo River, where we will spot different bird species such as eagles, oropendolas, and the celebrated woodpeckers. In the afternoon we will visit Yasuni National Park, one of the most biodiverse places on the planet and home to the legendary pink dolphin. This is the perfect opportunity to participate in our pink dolphin conservation program, which we are involved in together with the Martinica community in the Cocaya area, providing a safe haven where these dolphins can live and feed without the risk of being hunted. The Secoyas people, a minority ancestral culture, live near Yasuni, and will show us how to prepare traditional cassava bread during our visit.

DAY 3 FRIDAY: KICHWA FAMILY AND LIFE ONBOARD

We will begin the day by visiting an authentic Kichwa family on the banks of the Napo River, where we will have the opportunity to learn directly from members of the local community about their lifestyle. We will then board the Anakonda and participate in a cooking class with our expert chef, who will show us how to prepare exquisite traditional Ecuadorian fare. Guests are also invited to try their hand at traditional handicrafting or to take in the magnificent Amazon environment from our open-air hot tub, enjoy cocktails at our Bar and Lounge, or delight in some nighttime stargazing from our Observation Deck. Our more active guests will have the opportunity to explore nature in this area by kayak.

DAY 4 SATURDAY: FOREST ADVENTURE AND CANOPY OBSERVATION TOWER

We start the day by visiting an observation tower built in a giant millenary kapok tree, where guests can marvel at the impressive 360° view from the top

overlooking the treetops of the forest canopy and contemplate the sheer vastness of the Amazon. In the afternoon, we will explore the primary forest and spot the different plant and wildlife species endemic to this ecosystem. We can also find the strange and unique bird known as the hoatzin, or as it's known locally, the "stinkbird".

DAY 5 SUNDAY: INDILLAMA AND NAPO RIVERS, THE NORTH SIDE OF YASUNI NATIONAL PARK

We will begin the day kayaking on the Indillama River, one of the Napo River tributaries that will take us to Yasuni National Park. Kayaks are comfortable, smooth, and silent, providing an ideal opportunity for spotting wildlife. We can also use canoes to travel in search of even more wildlife. After an adventure-filled day, guests can take advantage of our observation deck and experience a magical view under the stars. Our more energetic guests can choose to unwind with a night walk through the jungle in search of nocturnal creatures.

DAY 6 MONDAY: PAÑACOCOA, THE MYTHICAL PIRANHA LAGOON

We will travel downstream to the Pañayacu River delta, where we will embark on a canoe trip to Pañacocha Lake ("Piranha Lagoon" in the native Kichwa language), an ecosystem flooded by blackwater river water. The surrounding protected rainforest is home to primates and birds and is the perfect habitat for piranhas, the Paiche or pirarucu (one of the world's largest freshwater fish), the white caiman, and hundreds of other aquatic animals. The surrounding protected rainforest is home to primates and various bird species, which we will be able to spot during a walk with our guides. We will then recharge our energy with an Amazon-style barbeque at a community camp, and after a short rest, we will take part in aquatic activities such as kayaking and/or swimming. Back on board the Anakonda, we will build on what we learned with an interesting talk about the region given by our guides.

DAY 7 TUESDAY: PARROT CLAY LICKS AND AMAZON COMMUNITIES

We will set out on our motorized canoes early in the morning to witness one of the most incredible sights on this side of the Western Amazon - the famous parrot clay licks. This unique place is rich in minerals and attracts hundreds of



Wild Earth Travel

Small Ships, Big Adventures

wildearth-travel.com

info@wildearth-travel.com

colorful parrots, parakeets, and Amazon birds who meet up here to lick the clay which provides a healthy boost to their digestion. In the afternoon we will visit the Kichwa women's community project, where we will learn about the indigenous lifestyle along the Napo river, their ancestral culture, and their community, and will have the opportunity to support them by purchasing handicrafts, local products, and souvenirs, as well as the opportunity to participate in the Charapas Turtle Conservation that we support together with the community.

DAY 8 WEDNESDAY: RETURN

This is where our adventure ends! But first, we will enjoy our return to Puerto Providencia where we will disembark the Anakonda Amazon Cruise and ride back to the city of Coca in the motorized canoe.

Please Note:

Itineraries are subject to change. Shorter 4- and 5-day cruises are available. Please contact us for more information.

Wild Earth Travel

Small Ships, Big Adventures

0800 945 3327 (within New Zealand) | +64 (0) 3 365 1355 | **1800 107 715** (within Australia)

info@wildearth-travel.com | **wildearth-travel.com**

Wild Earth Travel

Small Ships, Big Adventures

wildearth-travel.com

info@wildearth-travel.com

YOUR SHIP: ANAKONDA

YOUR SHIP:	Anakonda
VESSEL TYPE:	River Cruise
LENGTH:	45m
PASSENGER CAPACITY:	40
BUILT/REFURBISHED:	2013

The Anakonda Amazon was built to make the experience of the Amazon the most comprehensive and unique adventure possible! Its eighteen suites feature ample sitting areas, large and comfortable beds. The vessel comes complete with an expansive observation deck, outdoor Jacuzzi and an al fresco lounge, ideal for cocktails, relaxation, reading or simply enjoying the spectacular view.

The vessel also features 3 canoes for guest transportation to land excursions and activities and 10 kayaks, as well as hammocks, naturalist tour leaders and a travel concierge, who will go out of his way to personalize your experience, making the Anakonda Amazon River Cruise a savory, unforgettably exciting treat!

Launch Boats : Three fiberglass ecologic canoes equipped with four-stroke low emission engines; constant radio communications with the main vessel. Each canoe has a capacity of 30 passengers.

• Crew : 20, including a purser, paramedic, 4 English-speaking naturalist guides, 4 native guides, Captain, concierge and crew members.

• Accommodation : Up to 40 passengers with private facilities

Suites : 18 Suites:

4 Deluxe Suites with balconies

14 Standard Suites (4 interconnected)

\- All outside-facing with large panoramic windows

\- All in-suite sitting areas

\- All with air conditioning system

• Suites Features :

Full sized beds that can be converted to a queen-sized bed, bathroom with shower, toilet, sink, cabinet, hairdryer and a basket of toiletries

Hot water available 24-hours

• Social Areas :

Bar-Lounge / Conference room

Indoor Dining Room

Outside Lounge with "al fresco" dining facilities

Spacious sundeck with two outdoor Jacuzzis and lazy chairs

Boutique.



/>Boutique.

Wild Earth Travel

Small Ships, Big Adventures

0800 945 3327 (within New Zealand) | +64 (0) 3 365 1355 | **1800 107 715** (within Australia)

info@wildearth-travel.com | **wildearth-travel.com**

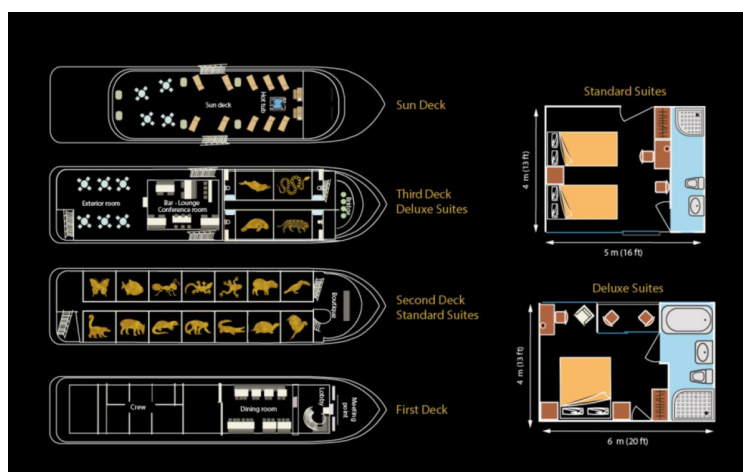
Wild Earth Travel

Small Ships, Big Adventures

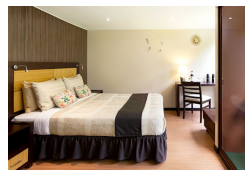
wildearth-travel.com

info@wildearth-travel.com

INSIDE YOUR SHIP



Deluxe Suite



Standard Suite



Wild Earth Travel

Small Ships, Big Adventures

0800 945 3327 (within New Zealand) | +64 (0) 3 365 1355 | 1800 107 715 (within Australia)

info@wildearth-travel.com | wildearth-travel.com

Wild Earth Travel

Small Ships, Big Adventures

wildearth-travel.com

info@wildearth-travel.com

PRICING

23-Apr-2025 to 30-Apr-2025

Standard Suite	5990 USD pp
Deluxe Suite	7485 USD pp

30-Apr-2025 to 07-May-2025

Standard Suite	5990 USD pp
Deluxe Suite	7485 USD pp

07-May-2025 to 14-May-2025

Standard Suite	5690 USD pp
Deluxe Suite	7111 USD pp

07-May-2025 to 14-May-2025

Standard Suite	5990 USD pp
Deluxe Suite	7485 USD pp

14-May-2025 to 21-May-2025

Standard Suite	5990 USD pp
Deluxe Suite	7485 USD pp

21-May-2025 to 28-May-2025

Standard Suite	5990 USD pp
Deluxe Suite	7485 USD pp

28-May-2025 to 04-Jun-2025

Standard Suite	5990 USD pp
Deluxe Suite	7485 USD pp

04-Jun-2025 to 11-Jun-2025

Standard Suite	5990 USD pp
Deluxe Suite	7485 USD pp

11-Jun-2025 to 18-Jun-2025

Standard Suite	5990 USD pp
Deluxe Suite	7485 USD pp

18-Jun-2025 to 25-Jun-2025

Standard Suite	5990 USD pp
Deluxe Suite	7485 USD pp

25-Jun-2025 to 02-Jul-2025

Standard Suite	5990 USD pp
Deluxe Suite	7485 USD pp

02-Jul-2025 to 09-Jul-2025

Standard Suite	5990 USD pp
Deluxe Suite	7485 USD pp

09-Jul-2025 to 16-Jul-2025

Standard Suite	5990 USD pp
Deluxe Suite	7485 USD pp

16-Jul-2025 to 23-Jul-2025

Standard Suite	5990 USD pp
Deluxe Suite	7485 USD pp

23-Jul-2025 to 30-Jul-2025

Standard Suite	5990 USD pp
Deluxe Suite	7485 USD pp



Wild Earth Travel

Small Ships, Big Adventures

wildearth-travel.com

info@wildearth-travel.com

30-Jul-2025 to 06-Aug-2025

Standard Suite	5990 USD pp
-----------------------	--------------------

Deluxe Suite	7485 USD pp
---------------------	--------------------

06-Aug-2025 to 13-Aug-2025

Standard Suite	5990 USD pp
-----------------------	--------------------

Deluxe Suite	7485 USD pp
---------------------	--------------------

13-Aug-2025 to 20-Aug-2025

Standard Suite	5990 USD pp
-----------------------	--------------------

Deluxe Suite	7485 USD pp
---------------------	--------------------

Wild Earth Travel

Small Ships, Big Adventures

0800 945 3327 (within New Zealand) | +64 (0) 3 365 1355 | **1800 107 715** (within Australia)

info@wildearth-travel.com | **wildearth-travel.com**

Wild Earth Travel

Small Ships, Big Adventures

wildearth-travel.com

info@wildearth-travel.com

PRICING

20-Aug-2025 to 27-Aug-2025

Standard Suite	5990 USD pp
Deluxe Suite	7485 USD pp

27-Aug-2025 to 03-Sep-2025

Standard Suite	5990 USD pp
Deluxe Suite	7485 USD pp

03-Sep-2025 to 10-Sep-2025

Standard Suite	5990 USD pp
Deluxe Suite	7485 USD pp

10-Sep-2025 to 17-Sep-2025

Standard Suite	5990 USD pp
Deluxe Suite	7485 USD pp

17-Sep-2025 to 24-Sep-2025

Standard Suite	5990 USD pp
Deluxe Suite	7485 USD pp

24-Sep-2025 to 01-Oct-2025

Standard Suite	5990 USD pp
Deluxe Suite	7485 USD pp

01-Oct-2025 to 08-Oct-2025

Standard Suite	5990 USD pp
Deluxe Suite	7485 USD pp

08-Oct-2025 to 15-Oct-2025

Standard Suite	5990 USD pp
Deluxe Suite	7485 USD pp

15-Oct-2025 to 22-Oct-2025

Standard Suite	5990 USD pp
Deluxe Suite	7485 USD pp

22-Oct-2025 to 29-Oct-2025

Standard Suite	5990 USD pp
Deluxe Suite	7485 USD pp

29-Oct-2025 to 05-Nov-2025

Standard Suite	5990 USD pp
Deluxe Suite	7485 USD pp

05-Nov-2025 to 12-Nov-2025

Standard Suite	5990 USD pp
Deluxe Suite	7485 USD pp

12-Nov-2025 to 19-Nov-2025

Standard Suite	5990 USD pp
Deluxe Suite	7485 USD pp

19-Nov-2025 to 26-Nov-2025

Standard Suite	5990 USD pp
Deluxe Suite	7485 USD pp

26-Nov-2025 to 03-Dec-2025

Standard Suite	5990 USD pp
Deluxe Suite	7485 USD pp

Wild Earth Travel

Small Ships, Big Adventures

0800 945 3327 (within New Zealand) | +64 (0) 3 365 1355 | 1800 107 715 (within Australia)

info@wildearth-travel.com | wildearth-travel.com



Wild Earth Travel

Small Ships, Big Adventures

wildearth-travel.com

info@wildearth-travel.com

03-Dec-2025 to 10-Dec-2025

Standard Suite	5990 USD pp
-----------------------	--------------------

Deluxe Suite	7485 USD pp
---------------------	--------------------

10-Dec-2025 to 17-Dec-2025

Standard Suite	5990 USD pp
-----------------------	--------------------

Deluxe Suite	7485 USD pp
---------------------	--------------------

17-Dec-2025 to 24-Dec-2025

Standard Suite	5990 USD pp
-----------------------	--------------------

Deluxe Suite	7485 USD pp
---------------------	--------------------

Wild Earth Travel

Small Ships, Big Adventures

0800 945 3327 (within New Zealand) | +64 (0) 3 365 1355 | **1800 107 715** (within Australia)

info@wildearth-travel.com | **wildearth-travel.com**

Wild Earth Travel

Small Ships, Big Adventures

wildearth-travel.com

info@wildearth-travel.com

PRICING

24-Dec-2025 to 31-Dec-2025

Standard Suite	5990 USD pp
Deluxe Suite	7485 USD pp

31-Dec-2025 to 07-Jan-2026

Standard Suite	5990 USD pp
Deluxe Suite	7485 USD pp

07-Jan-2026 to 14-Jan-2026

Standard Suite	5990 USD pp
Deluxe Suite	7485 USD pp

14-Jan-2026 to 21-Jan-2026

Standard Suite	5990 USD pp
Deluxe Suite	7485 USD pp

21-Jan-2026 to 28-Jan-2026

Standard Suite	5990 USD pp
Deluxe Suite	7485 USD pp

28-Jan-2026 to 04-Feb-2026

Standard Suite	5990 USD pp
Deluxe Suite	7485 USD pp

04-Feb-2026 to 11-Feb-2026

Standard Suite	5990 USD pp
Deluxe Suite	7485 USD pp

11-Feb-2026 to 18-Feb-2026

Standard Suite	5990 USD pp
Deluxe Suite	7485 USD pp

18-Feb-2026 to 25-Feb-2026

Standard Suite	5990 USD pp
Deluxe Suite	7485 USD pp

25-Feb-2026 to 04-Mar-2026

Standard Suite	5990 USD pp
Deluxe Suite	7485 USD pp

04-Mar-2026 to 11-Mar-2026

Standard Suite	5990 USD pp
Deluxe Suite	7485 USD pp

11-Mar-2026 to 18-Mar-2026

Standard Suite	5990 USD pp
Deluxe Suite	7485 USD pp

18-Mar-2026 to 25-Mar-2026

Standard Suite	5990 USD pp
Deluxe Suite	7485 USD pp

25-Mar-2026 to 01-Apr-2026

Standard Suite	5990 USD pp
Deluxe Suite	7485 USD pp

01-Apr-2026 to 08-Apr-2026

Standard Suite	5990 USD pp
Deluxe Suite	7485 USD pp



Wild Earth Travel

Small Ships, Big Adventures

wildearth-travel.com

info@wildearth-travel.com

08-Apr-2026 to 15-Apr-2026

Standard Suite	5990 USD pp
-----------------------	--------------------

Deluxe Suite	7485 USD pp
---------------------	--------------------

15-Apr-2026 to 22-Apr-2026

Standard Suite	5990 USD pp
-----------------------	--------------------

Deluxe Suite	7485 USD pp
---------------------	--------------------

22-Apr-2026 to 29-Apr-2026

Standard Suite	5990 USD pp
-----------------------	--------------------

Deluxe Suite	7485 USD pp
---------------------	--------------------

Wild Earth Travel

Small Ships, Big Adventures

0800 945 3327 (within New Zealand) | +64 (0) 3 365 1355 | **1800 107 715** (within Australia)

info@wildearth-travel.com | **wildearth-travel.com**

Wild Earth Travel

Small Ships, Big Adventures

wildearth-travel.com

info@wildearth-travel.com

PRICING

29-Apr-2026 to 06-May-2026

Standard Suite	5990 USD pp
Deluxe Suite	7485 USD pp

06-May-2026 to 13-May-2026

Standard Suite	5990 USD pp
Deluxe Suite	7485 USD pp

13-May-2026 to 20-May-2026

Standard Suite	5990 USD pp
Deluxe Suite	7485 USD pp

20-May-2026 to 27-May-2026

Standard Suite	5990 USD pp
Deluxe Suite	7485 USD pp

27-May-2026 to 03-Jun-2026

Standard Suite	5990 USD pp
Deluxe Suite	7485 USD pp

03-Jun-2026 to 10-Jun-2026

Standard Suite	5990 USD pp
Deluxe Suite	7485 USD pp

10-Jun-2026 to 17-Jun-2026

Standard Suite	5990 USD pp
Deluxe Suite	7485 USD pp

17-Jun-2026 to 24-Jun-2026

Standard Suite	5990 USD pp
Deluxe Suite	7485 USD pp

24-Jun-2026 to 01-Jul-2026

Standard Suite	5990 USD pp
Deluxe Suite	7485 USD pp

01-Jul-2026 to 08-Jul-2026

Standard Suite	5990 USD pp
Deluxe Suite	7485 USD pp

08-Jul-2026 to 15-Jul-2026

Standard Suite	5990 USD pp
Deluxe Suite	7485 USD pp

15-Jul-2026 to 22-Jul-2026

Standard Suite	5990 USD pp
Deluxe Suite	7485 USD pp

22-Jul-2026 to 29-Jul-2026

Standard Suite	5990 USD pp
Deluxe Suite	7485 USD pp

29-Jul-2026 to 05-Aug-2026

Standard Suite	5990 USD pp
Deluxe Suite	7485 USD pp

05-Aug-2026 to 12-Aug-2026

Standard Suite	5990 USD pp
Deluxe Suite	7485 USD pp



Wild Earth Travel

Small Ships, Big Adventures

wildearth-travel.com

info@wildearth-travel.com

12-Aug-2026 to 19-Aug-2026

Standard Suite	5990 USD pp
-----------------------	--------------------

Deluxe Suite	7485 USD pp
---------------------	--------------------

19-Aug-2026 to 26-Aug-2026

Standard Suite	5990 USD pp
-----------------------	--------------------

Deluxe Suite	7485 USD pp
---------------------	--------------------

26-Aug-2026 to 02-Sep-2026

Standard Suite	5990 USD pp
-----------------------	--------------------

Deluxe Suite	7485 USD pp
---------------------	--------------------

Wild Earth Travel

Small Ships, Big Adventures

0800 945 3327 (within New Zealand) | +64 (0) 3 365 1355 | **1800 107 715** (within Australia)

info@wildearth-travel.com | **wildearth-travel.com**

Wild Earth Travel

Small Ships, Big Adventures

wildearth-travel.com

info@wildearth-travel.com

PRICING

02-Sep-2026 to 09-Sep-2026

Standard Suite	5990 USD pp
Deluxe Suite	7485 USD pp

09-Sep-2026 to 16-Sep-2026

Standard Suite	5990 USD pp
Deluxe Suite	7485 USD pp

16-Sep-2026 to 23-Sep-2026

Standard Suite	5990 USD pp
Deluxe Suite	7485 USD pp

23-Sep-2026 to 30-Sep-2026

Standard Suite	5990 USD pp
Deluxe Suite	7485 USD pp

30-Sep-2026 to 07-Oct-2026

Standard Suite	5990 USD pp
Deluxe Suite	7485 USD pp

07-Oct-2026 to 14-Oct-2026

Standard Suite	5990 USD pp
Deluxe Suite	7485 USD pp

14-Oct-2026 to 21-Oct-2026

Standard Suite	5990 USD pp
Deluxe Suite	7485 USD pp

21-Oct-2026 to 28-Oct-2026

Standard Suite	5990 USD pp
Deluxe Suite	7485 USD pp

28-Oct-2026 to 04-Nov-2026

Standard Suite	5990 USD pp
Deluxe Suite	7485 USD pp

04-Nov-2026 to 11-Nov-2026

Standard Suite	5990 USD pp
Deluxe Suite	7485 USD pp

11-Nov-2026 to 18-Nov-2026

Standard Suite	5990 USD pp
Deluxe Suite	7485 USD pp

18-Nov-2026 to 25-Nov-2026

Standard Suite	5990 USD pp
Deluxe Suite	7485 USD pp

25-Nov-2026 to 02-Dec-2026

Standard Suite	5990 USD pp
Deluxe Suite	7485 USD pp

02-Dec-2026 to 09-Dec-2026

Standard Suite	5990 USD pp
Deluxe Suite	7485 USD pp

09-Dec-2026 to 16-Dec-2026

Standard Suite	5990 USD pp
Deluxe Suite	7485 USD pp



Wild Earth Travel

Small Ships, Big Adventures

wildearth-travel.com

info@wildearth-travel.com

16-Dec-2026 to 23-Dec-2026

Standard Suite	5990 USD pp
-----------------------	--------------------

Deluxe Suite	7485 USD pp
---------------------	--------------------

23-Dec-2026 to 30-Dec-2026

Standard Suite	5990 USD pp
-----------------------	--------------------

Deluxe Suite	7485 USD pp
---------------------	--------------------

30-Dec-2026 to 06-Jan-2027

Standard Suite	5990 USD pp
-----------------------	--------------------

Deluxe Suite	7485 USD pp
---------------------	--------------------



Wild Earth Travel
Small Ships, Big Adventures

0800 945 3327 (within New Zealand) | +64 (0) 3 365 1355 | **1800 107 715** (within Australia)

info@wildearth-travel.com | **wildearth-travel.com**