



Wild Earth Travel

Small Ships, Big Adventures

wildearth-travel.com

info@wildearth-travel.com

ANCIENT WONDERS OF THE MEDITERRANEAN - TURKEY & GREECE LUXURY CRUISE

The mildness of autumn on the waters of the Aegean Sea promises you an unforgettable 11-day journey between Greece and Turkey. Aboard Le Dumont-d'Urville, fall under the spell of the Mediterranean landscapes and the ancient vestiges that will tell you a fascinating story.

Throughout your journey, you will benefit from an excursion included per person per port of call, to choose from a selection offered by PONANT. During this cruise, visit the archaeological site of Ephesus from Kusadasi, discover the monastery of Saint John and the Cave of the Apocalypse where the last book of the New Testament was revealed to John the Apostle, from Patmos, or admire the sumptuous archaeological sites, from the Temples of Zeus, Apollo and Athena to the Terrace of the Lions, from Delos. The diversity of experiences on offer promises you intense and varied moments (to discover the full range of excursions, go to the itinerary tab). The diversity of experiences on offer promises you intense and varied moments (to discover the full range of excursions, go to the itinerary tab).

From Athens, you will arrive in Kusadasi, in Turkey. An old fishing village with history going back 5,000 years, not far from the Ephesus site, the town is now one of the country's most famous seaside resorts.

Then, the island of Patmos, known as "the Jerusalem of the Aegean Sea", reveals itself to offer you a moment suspended between unique landscapes of white-sand beaches and rocky bays.

The birthplace of Artemis and Apollo, Delos is rich in archaeological ruins, UNESCO World Heritage Sites, illustrating its prestigious history. A journey back in time almost 2,000 years, between millennia-old heritage and sumptuous panoramas.

Paros, renowned for its stunning white marble, offers a real concentration of Greek beauty, with its whitewashed houses, olive groves and ancient monuments. You will then make a detour via the island of Hydra, famous for its incomparable light and the calm of its small streets on which all motorised traffic is banned.

Further north, you will arrive in Nafplio, the departure point for discovering the Ancient Theatre of Epidaurus and the Mycenae archaeological site, both UNESCO World Heritage sites.

The fortified peninsula of Monemvasia will reveal itself, monumental, like a ship of stone overlooking the azure during your next port of call in the Peloponnese.

Then, Santorini, one of the pearls of the archipelago, awaits you for an enchanted interlude, unfurling the grandiose crater of its caldera.

You will travel towards Crete and its capital Heraklion. In this capital built on the side of a hill overlooking the harbour,

Wild Earth Travel

Small Ships, Big Adventures

0800 945 3327 (within New Zealand) | +64 (0) 3 365 1355 | **1800 107 715** (within Australia)

info@wildearth-travel.com | **wildearth-travel.com**

Wild Earth Travel

Small Ships, Big Adventures

wildearth-travel.com

info@wildearth-travel.com

discover the former Venetian ramparts, which provide a unique view of the city.

On the mythical island of Rhodes, let yourself be swept away by the charm of this medieval city with its gothic architecture, a UNESCO World Heritage Site.

Finally you will arrive in Antalya, a former Roman port with picturesque alleyways and fine Ottoman residences.



residences.

ITINERARY

Day 1 ATHENS

The Greek capital city is located on the edge of the Saronic gulf, in the east of the country. It bears a plural name in reference to the first villages that surround the Acropolis. You will be enchanted by the rocky plateau presided by its monuments listed as UNESCO World Heritage. In the city below, you can visit some of the liveliest districts in Athens: Plaka, with its maze of colourful streets, and where, in the evenings the drifting aroma of moussaka and garlic prawns will tickle your taste buds. The National Archaeological museum and the Cycladic Art Museum are also some of the city's key attractions and allow visitors to discover Athens' cultural past.

Day 2 KUSADASI

The attractive seaside resort of Kusadasi is located in a gulf on the western coast of Turkey. You can bathe there in clear waters or stroll along the coastal walk, in the shade of palms. In the historical district, you can take a mosey down the narrow streets and explore the colourful shops in the bazaar. Close by, the Ephesus archaeological site in the hillsides provides an opportunity to discover the ruins of one of the most famous cities of Antiquity.

Day 3 PATMOS

Patmos is one of the legendary must-see islands in the Dodecanese. This is where Saint John resided, presumed author of the last book in the Bible. The cave of the Apocalypse and the Saint John Monastery are dedicated to him. These sites, which are listed by UNESCO as World Heritage, are located at the top of a hillside planted with vines and orchards. On the shore, the crystalline coves of Kambos and Lampi offer absolutely gorgeous swimming areas.

Day 4 DELOS & PAROS

This legendary Cyclades island of Delos stands just a few miles southwest of Mykonos. The ceremonial solemnity of this ancient holy sanctuary will not

Wild Earth Travel

Small Ships, Big Adventures

0800 945 3327 (within New Zealand) | +64 (0) 3 365 1355 | **1800 107 715** (within Australia)

info@wildearth-travel.com | wildearth-travel.com



Wild Earth Travel

Small Ships, Big Adventures

wildearth-travel.com

info@wildearth-travel.com

leave you indifferent. The sheer size and importance of this UNESCO World Heritage site which covers over half of the island is thrilling in itself. From the Stoa of Antigonos, the Terrace of the Lions, to the carved marble animal statues, you will make discovery after discovery, against a backdrop of the Aegean stretching to the horizon. The theatre steps on the hillside are a particularly good place from which to enjoy the expansive view.

Famous for its white marble, the island of Paros is located in the Cyclades. Along the quays of Parikia, its main town, you'll see Byzantine churches and neoclassical buildings. To make the most of the turquoise waters, you can stop over in Naoussa. This little fishing port is bounded by a very beautiful cove.

Day 5 HYDRA

This unusual gem belonging to the Saronic islands is located to the east of the Peloponnese. There are no cars here. Named after the island, the harbour town is layered up the slopes of a mountainous bay. You may be surprised to see beautiful stone mansions. These are traditional here, as are the multi-coloured caiques along the quays. Further along the shore, you will discover the Historical Archives Museum. Collections from Athens National History Museum are exhibited in the elegant villa Koundouriotis.

Day 6 NAFPLION

The engaging town of Nafplion is staggered up green hillsides of the Argolic Gulf, to the east of the Peloponnese. Do not be surprised by its extremely varied cultural heritage. Some of the must-see visits are the ancient agora on the plateau of Akronafplia, Italianate arcades in Syntagma square as well as the baroque fortress of Palamidi on a hillside of the same name. At the top of the hill, views of the gulf and the surrounding mountains are simply awesome. If you want to chill out by the water's edge, walk along the Arvanitia promenade to a beautiful creek in the shade of cedars and cypresses.

Day 7 MONEMVASIA

The jewel of the southern Peloponnese, Monemvasia is the romantic refuge for Athenians. Given the poetic nickname of the "stone ship", this majestic peninsula is home to an incredible fortified medieval village, lying at the foot of its abrupt cliffs, which seems to have been cast by the gods from the Aegean Sea. Contemplate the horizon from its ramparts, a veritable walkway defying the azure waters, and stroll through its vaulted narrow streets with their thousand shades of ochre. At the crossroads of western and eastern influences and the maritime routes of the continent, Crete and the Cyclades, Monemvasia has preserved in this magical decor the treasures of Venetian and Byzantine architecture.

Day 8 SANTORINI

The spectacular volcanic island of Santorini stands out proud in the Cyclades. Its basalt cliffs offer particularly expansive views of the Aegean. To enjoy these views, you can head for the capital, Fira. Its floral belvederes of bougainvillea provide a bird's-eye view of several thousand metres of coastline. Further away, the gorgeous village of Oia looks like a stairway of blue and white houses on the slopes of the volcano. In the south of the island, you will be able to visit the stunning ruins of Akrotiri, an ancient city destroyed by an eruption and covered with a thick layer of lava stone.

Day 9 HERAKLION, CRETE

Heraklion, the capital of Crete, is the island's most populous city. The hustle and bustle of this seaport is an integral part of its charm. It is built on a hillside overlooking the port and is encircled by impressive Venetian walls. From the top of these, you will be able to enjoy one of the most beautiful views of the city. The old town is teeming with small shops, squares, cafes and vibrant architectural evidence of the city's long history. The Palace of Knossos illustrates the wealth and power of its legendary sovereign, King Minos. The archaeological museum houses one of the largest collections of Minoan artefacts and is worth a visit.

Wild Earth Travel

Small Ships, Big Adventures

0800 945 3327 (within New Zealand) | +64 (0) 3 365 1355 | **1800 107 715** (within Australia)

info@wildearth-travel.com | **wildearth-travel.com**



Wild Earth Travel

Small Ships, Big Adventures

wildearth-travel.com

info@wildearth-travel.com

Day 10 RHODES

With its particularly agreeable climate, the island of Rhodes invites you to walk its pathways and discover its immaculate villages and sumptuous medieval city, a UNESCO World Heritage site. At the centre of the island the mountains are covered in forest and on the western slopes we find vineyards and crops. Rhodes also owes much of its charm and its character to the Knights of St John who reigned over the island from 1310 to 1522 and built impressive defensive walls punctuated with majestic gateways. Do not miss this delightful island with its peaceful beaches and its large walkways, perpetuating the myth of the famous Colossus, the legendary statue that is one of the Seven Wonders of the World.

Day 11 ANTALYA

On the Turkish Mediterranean coast, discover the seaside resort of Antalya. While the city sports magnificent fine sandy beaches, it is also known for its significant historical heritage. Many vestiges bear witness to the importance of this former Roman port, such as Hadrian's Gate, built in the year 130 in honour of the visiting emperor. In the old town, it is possible to admire magnificent Ottoman houses with flowery gardens, as well as the broken minaret, built on the ruins of a former Byzantine church. The city's surroundings also provide an opportunity to discover major archaeological sites, such as that of the ancient city of Aspendos, renowned for its impressive Roman theatre.

Please note:

Itineraries are subject to change.

Wild Earth Travel

Small Ships, Big Adventures

0800 945 3327 (within New Zealand) | +64 (0) 3 365 1355 | **1800 107 715** (within Australia)

info@wildearth-travel.com | **wildearth-travel.com**

YOUR SHIP: LE DUMONT D'URVILLE

YOUR SHIP: Le Dumont d'Urville

VESSEL TYPE: Luxury

LENGTH:

PASSENGER CAPACITY: 92 cabins

BUILT/REFURBISHED: 2017/2018

Featuring innovative and environmentally-friendly equipment, elegantly designed staterooms, spacious suites with large windows, and lounge areas that open onto the outside, this new limited-capacity yacht boasting just 92 staterooms and suites will offer you a truly unique cruising experience.

As the first ship in a new series that remains true to the Ponant spirit, Le Dumont d'Urville will embody the unique atmosphere that is the cruise line's hallmark: a subtle blend of refinement, intimacy and comfort.

Aboard this ship that flies the French flag, you will experience the incomparable pleasure of an intimate cruise, with the possibility of exploring an ever-increasing range of destinations in an ethnic-chic ambiance with luxury service.

Experience a luxurious setting where the accent is on authenticity and passion for travel.

RESTAURANTS

As it is an essential part of French culture, gastronomy will naturally have pride of place aboard this new ship. Through its two restaurants, Le Dumont d'Urville will invite you on a journey to elegance and epicureanism.

In a relaxed atmosphere, a first dining area located on Deck 3

and able to seat 70 will serve grilled meats daily, along with a variety of salads and desserts.

To the back of Deck 4, you will find a 260 m² panoramic restaurant which can accommodate all of our passengers in a single sitting. Designed differently to that on our other ships, this dining area, which opens onto the outside, will have a buffet of salads, desserts and cheeses at your disposal. Our discreet and attentive crew will provide table service for hot meals.

PUBLIC AREAS

Like Le Boreal and its sisterships, Le Dumont d'Urville has many common areas that are designed and equipped to meet all of your needs while preserving the intimacy of each passenger.

A 140 m² reception area includes: A reception/concierge desk, An excursions desk, The ship's administrative services, The sales office, manned by our Guest Relations Officer, Our 50 m² boutique which sells clothing, jewellery, beauty products, postcards and various accessories, Toilets accessible to passengers with reduced mobility.

A new hydraulic platform with adjustable height provides: Easier boarding than on any other cruise ship, Easier Zodiac embarkation and disembarkation for expeditions, Easier access to the sea for swimming and practising various water sports such as kayaking or paddle-boarding.

A pool deck offering: A pool with a panoramic view, equipped with a counter-current swimming system, A pleasant solarium, An outdoor bar and lounge with armchairs and sofas. A 200 m² main lounge which can accommodate all of our passengers to share convivial moments and to host activities organised during the day or evening.

Wild Earth Travel

Small Ships, Big Adventures

wildearth-travel.com

info@wildearth-travel.com

Lastly, a theatre that seats 188, equipped with: The latest sound and lighting technology, A LED wall as the stage backdrop, for the projection of high-resolution images and videos.



and videos.

Wild Earth Travel

Small Ships, Big Adventures

0800 945 3327 (within New Zealand) | +64 (0) 3 365 1355 | **1800 107 715** (within Australia)

info@wildearth-travel.com | **wildearth-travel.com**



wildearth-travel.com

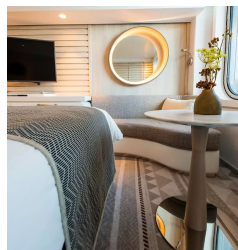
info@wildearth-travel.com

INSIDE YOUR SHIP

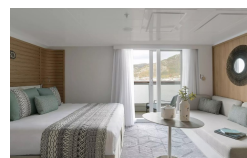


- Owner's Suite
Deck 6
- Privilege Suites
Deck 5-6
- Grand Deluxe Suites
Deck 5-6
- Prestige Suites
Deck 5-6
- Deluxe Suites
Deck 5-6
- Prestige Cabins
Deck 4-5-6
- Deluxe Cabins
Deck 3

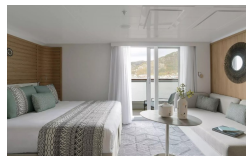
Deluxe Stateroom



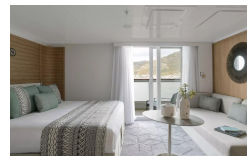
Deluxe Suite



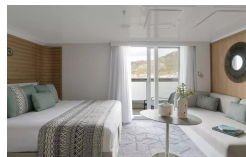
Deluxe Suite Deck 3



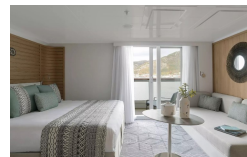
Deluxe Suite Deck 4



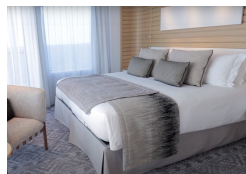
Deluxe Suite Deck 5



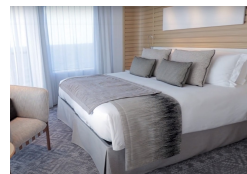
Deluxe Suite Deck 6



Grand Deluxe Suite



Grand Deluxe Suite Deck 5



Wild Earth Travel

Small Ships, Big Adventures

wildearth-travel.com

info@wildearth-travel.com

PRICING

22-Apr-2025 to 04-May-2025

Deluxe Stateroom	14020 AUD pp
Prestige Deck 4	14750 AUD pp
Prestige Deck 5	15500 AUD pp
Prestige Deck 6	16380 AUD pp
Deluxe Suite Deck 3	26540 AUD pp
Deluxe Suite Deck 5	26540 AUD pp
Deluxe Suite Deck 4	26540 AUD pp
Deluxe Suite Deck 6	26540 AUD pp
Prestige Deck 5 Suite	29500 AUD pp
Prestige Deck 6 Suite	30230 AUD pp
Privilege Suite Deck 5	31700 AUD pp
Privilege Suite Deck 6	31700 AUD pp
Grand Deluxe Suite Deck 5	38340 AUD pp
Grand Deluxe Suite Deck 6	38340 AUD pp

19-Oct-2025 to 29-Oct-2025

Deluxe Stateroom	12900 AUD pp
Prestige Stateroom Deck 4	13590 AUD pp
Prestige Stateroom Deck 5	14280 AUD pp
Prestige Stateroom Deck 6	15090 AUD pp
Deluxe Suite	24500 AUD pp
Deluxe Suite Deck 5	24500 AUD pp
Deluxe Suite Deck 4	24500 AUD pp
Deluxe Suite Deck 6	24500 AUD pp
Prestige Suite Deck 5	27240 AUD pp
Prestige Suite Deck 6	27910 AUD pp
Privilege Suite Deck 6	29280 AUD pp
Privilege Suite	29280 AUD pp
Grand Deluxe Suite	35410 AUD pp
Grand Deluxe Suite Deck 6	35410 AUD pp
Owner's Suite	35410 AUD pp

ADDITIONAL CHARGES:

Port Taxes 740 AUD pp

Wild Earth Travel

Small Ships, Big Adventures

0800 945 3327 (within New Zealand) | +64 (0) 3 365 1355 | **1800 107 715** (within Australia)

info@wildearth-travel.com | wildearth-travel.com



Wild Earth Travel

Small Ships, Big Adventures

wildearth-travel.com

info@wildearth-travel.com

SPECIAL OFFERS

Online prices reflect the current brochure fare savings of up to 30%. Prices may change based on demand. Terms and conditions apply. This special offer is subject to availability. Please contact us for more details.

Wild Earth Travel

Small Ships, Big Adventures

0800 945 3327 (within New Zealand) | +64 (0) 3 365 1355 | **1800 107 715** (within Australia)

info@wildearth-travel.com | **wildearth-travel.com**