

Wild Earth Travel

Small Ships, Big Adventures

wildearth-travel.com

info@wildearth-travel.com

ANTARCTICA DIRECT: FLY THE DRAKE PASSAGE - 9 DAY EXPEDITION

Join the pioneers of Antarctic expedition travel on a thrilling voyage that allows for six days of exploration on the continent. Save time by flying directly from South America to the Antarctic peninsula (and back) where we embark the National Geographic Orion, purpose-built for polar waters. Witness the grandeur of this icy wilderness as you kayak among dazzling blue icebergs, sail past dramatic snow-capped peaks and rugged shores, and encounter the region's iconic wildlife—from scores of penguins to whales, seals, and seabirds. A veteran team of naturalists and a National Geographic Photography Expert by your side ensures that you'll have the most unforgettable experience and incredible photos to prove it.



ITINERARY

DAY 1 Puerto Natales, Chile

Arrive in Puerto Natales. Originally a small fishing port, the town is nestled on the Last Hope Sound and boasts a stunning view of the sea surrounded by the Cerro Benitez Mountains—the gateway to Torres del Paine. Transfer from the airport to our hotel. Join us this evening for dinner and a briefing on the following day's activities.

Wild Earth Travel

Small Ships, Big Adventures

0800 945 3327 (within New Zealand) | +64 (0) 3 365 1355 | **1800 107 715** (within Australia)

info@wildearth-travel.com | **wildearth-travel.com**

Wild Earth Travel

Small Ships, Big Adventures

wildearth-travel.com

info@wildearth-travel.com

Arrival Time: Arrive to the hotel in Puerto Natales by 3:00 p.m. local time.

Arrival City: Puerto Natales, Chile

Meals Included: Dinner

DAY 2 Puerto Natales / King George Island, Antarctica / Embark Ship

Following breakfast, check out of the hotel and transfer to the airport for our 2-hour direct flight to King George Island and the thrilling start to our Antarctic adventure. Home to a diverse assortment of wildlife--Weddell and elephant seals; Adelie, chinstrap, and gentoo penguins--King George Island also has a human presence. Researchers from a wide range of countries, including the U.S., Chile, Argentina, and Brazil, call the various stations home. Our flight will land at the Chilean research station where National Geographic Orion will be waiting offshore. Board Zodiacs to embark the ship and set sail as we begin exploring this amazing region.

Meals Included: Breakfast, Lunch, Dinner

DAYS 3-7 Exploring Antarctica

With long hours of daylight at this time of year, we have ample opportunities to explore. Our schedule is flexible, allowing us to take advantage of the unexpected, whether we're watching whales at play off the bow of our ship, hiking alongside penguin highways, or enjoying an evening Zodiac cruise amid porpoising penguins.

While wildlife is magnificent, ice defines the Antarctic. You'll get to know ice up close and personal--from icebergs the size of islands, bergy bits and near-vertical glaciers, to the fragile, nearly invisible layers that have just begun to freeze. One day, we might set out by kayak to encounter towering icebergs at water level; embark on a Zodiac excursion in search of seals and blue-eyed shags; or walk amid thousands of Adelie and gentoo penguins. The next, we might experience the thrill of the ship crunching through pack ice.

Everywhere we go in Antarctica we're surrounded by opportunities to capture

uniquely beautiful images. Along the way your expert expedition team will enrich every experience.

Meals Included: Breakfast, Lunch, Dinner

DAY 8 King George Island / Disembark Ship / Puerto Natales

This morning, the ship will be moored off of King George Island once again. Following disembarkation and Zodiac rides to shore, our flight departs the White Continent and returns to Puerto Natales where we overnight at our hotel.

Meals Included: Breakfast, Lunch, Dinner

DAY 9 Puerto Natales

Check out of our hotel and transfer to the airport to begin your journey homeward.

Departure Time: Outbound flights from Puerto Natales should depart no earlier than 3:45 p.m. local time (or as late in the day as possible).

Departure City: Puerto Natales, Chile

Meals Included: Breakfast

Please note:

Itineraries are subject to change.

Wild Earth Travel

Small Ships, Big Adventures

wildearth-travel.com

info@wildearth-travel.com

YOUR SHIP: NATIONAL GEOGRAPHIC ORION

| | |
|----------------------------|----------------------------------|
| YOUR SHIP: | National Geographic Orion |
| VESSEL TYPE: | Luxury Expedition |
| LENGTH: | 103 metres |
| PASSENGER CAPACITY: | 102 (in 53 cabins) |
| BUILT/REFURBISHED: | 2003 / Refurbished 2014 |

Engineered for maximum comfort and safety, *_Orion_* is equipped with the latest technology including large retractable stabilizers, sonar, radar, and an ice-strengthened hull. A shallow draft plus bow and stern thrusters provide the convenience of being able to maneuver close to shore. 14 Zodiacs ensure quick disembarkation and offer the ideal transport for up-close exploration.

National Geographic Orion meets strict specifications for environmental protection and the on board waste management systems meet the stringent Antarctic operational standards enabling us to travel to the most pristine environments. A host of advanced design features and technology ensures sustainable marine environmental practices.

National Geographic Orion accommodates 102 guests in 53 cabins, including several with balconies. She is spacious and modern, with a variety of public rooms that offer panoramic views of the passing landscape. Friendly and informal, *_Orion_* fosters a welcoming atmosphere where like-minded guests share in exceptional experiences and enrichment.

Her public rooms include a dramatic window-lined main lounge, as well as an observation lounge and library perched at the very

top of the ship, with plentiful observation decks. The spacious lounge is the heart of our expedition community, and is suited for spirited cocktail hours, informative presentations and our nightly tradition of Recap. In addition, a dedicated theater provides a unique setting for specialist presentations or films and slideshows. Both the main dining room and outside buffet easily accommodate all guests at once for open seating dining. On selected nights, weather permitting, our dining room menu is also available on the outside deck.

While *_Orion_* interiors are elegant, life aboard is always casual, with no need for formal clothing. And you'll find shipboard services like laundry, in-room cabled internet, and public-area wifi.



-area wifi.

Wild Earth Travel

Small Ships, Big Adventures

0800 945 3327 (within New Zealand) | +64 (0) 3 365 1355 | **1800 107 715** (within Australia)

info@wildearth-travel.com | **wildearth-travel.com**

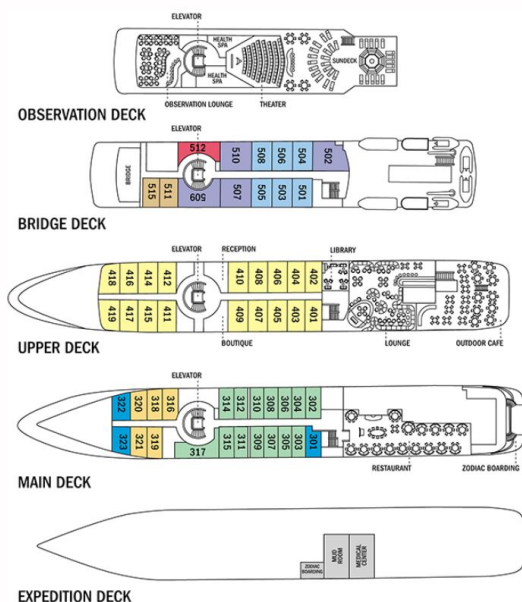
Wild Earth Travel

Small Ships, Big Adventures

wildearth-travel.com

info@wildearth-travel.com

INSIDE YOUR SHIP



Category 1



Category 1 Solo



Category 2



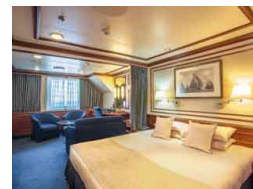
Category 3



Category 3 Solo



Category 4



Category 5



Category 6





Wild Earth Travel

Small Ships, Big Adventures

wildearth-travel.com

info@wildearth-travel.com

PRICING

16-Nov-2025 to 24-Nov-2025

| | |
|-----------------|--------------|
| Category 1 | 15679 AUD pp |
| Category 2 | 17314 AUD pp |
| Category 3 | 17771 AUD pp |
| Category 4 | 18926 AUD pp |
| Category 1 Solo | 22320 AUD pp |
| Category 5 | 23063 AUD pp |
| Category 3 Solo | 25474 AUD pp |
| Category 6 | 26434 AUD pp |

22-Nov-2025 to 30-Nov-2025

| | |
|-----------------|--------------|
| Category 1 | 15679 AUD pp |
| Category 2 | 17314 AUD pp |
| Category 3 | 17771 AUD pp |
| Category 4 | 18926 AUD pp |
| Category 1 Solo | 22320 AUD pp |
| Category 5 | 23063 AUD pp |
| Category 3 Solo | 25474 AUD pp |
| Category 6 | 26434 AUD pp |

28-Nov-2025 to 06-Dec-2025

| | |
|-----------------|--------------|
| Category 1 | 15679 AUD pp |
| Category 2 | 17314 AUD pp |
| Category 3 | 17771 AUD pp |
| Category 4 | 18926 AUD pp |
| Category 1 Solo | 22320 AUD pp |
| Category 5 | 23063 AUD pp |
| Category 3 Solo | 25474 AUD pp |
| Category 6 | 26434 AUD pp |

04-Dec-2025 to 12-Dec-2025

| | |
|-----------------|--------------|
| Category 1 | 15679 AUD pp |
| Category 2 | 17314 AUD pp |
| Category 3 | 17771 AUD pp |
| Category 4 | 18926 AUD pp |
| Category 1 Solo | 22320 AUD pp |
| Category 5 | 23063 AUD pp |
| Category 3 Solo | 25474 AUD pp |
| Category 6 | 26434 AUD pp |

Wild Earth Travel
Small Ships, Big Adventures

0800 945 3327 (within New Zealand) | +64 (0) 3 365 1355 | **1800 107 715** (within Australia)

info@wildearth-travel.com | wildearth-travel.com



Wild Earth Travel

Small Ships, Big Adventures

wildearth-travel.com

info@wildearth-travel.com

PRICING

14-Dec-2025 to 22-Dec-2025

| | |
|-----------------|--------------|
| Category 1 | 15679 AUD pp |
| Category 2 | 17314 AUD pp |
| Category 3 | 17771 AUD pp |
| Category 4 | 18926 AUD pp |
| Category 1 Solo | 22320 AUD pp |
| Category 5 | 23063 AUD pp |
| Category 3 Solo | 25474 AUD pp |
| Category 6 | 26434 AUD pp |

20-Dec-2025 to 28-Dec-2025

| | |
|-----------------|--------------|
| Category 1 | 19250 AUD pp |
| Category 2 | 21063 AUD pp |
| Category 3 | 21634 AUD pp |
| Category 4 | 23074 AUD pp |
| Category 1 Solo | 27314 AUD pp |
| Category 5 | 28251 AUD pp |
| Category 3 Solo | 31269 AUD pp |
| Category 6 | 32469 AUD pp |

13-Jan-2026 to 21-Jan-2026

| | |
|-----------------|--------------|
| Category 1 | 17107 AUD pp |
| Category 2 | 19189 AUD pp |
| Category 3 | 19703 AUD pp |
| Category 4 | 21017 AUD pp |
| Category 1 Solo | 24811 AUD pp |
| Category 5 | 25669 AUD pp |
| Category 3 Solo | 28366 AUD pp |
| Category 6 | 29463 AUD pp |

26-Jan-2026 to 03-Feb-2026

| | |
|-----------------|--------------|
| Category 1 | 17107 AUD pp |
| Category 2 | 19189 AUD pp |
| Category 3 | 19703 AUD pp |
| Category 4 | 21017 AUD pp |
| Category 1 Solo | 24811 AUD pp |
| Category 5 | 25669 AUD pp |
| Category 3 Solo | 28366 AUD pp |
| Category 6 | 29463 AUD pp |



Wild Earth Travel

Small Ships, Big Adventures



wildearth-travel.com

info@wildearth-travel.com

PRICING

01-Feb-2026 to 09-Feb-2026

| | |
|-----------------|--------------|
| Category 1 | 17107 AUD pp |
| Category 2 | 19189 AUD pp |
| Category 3 | 19703 AUD pp |
| Category 4 | 21017 AUD pp |
| Category 1 Solo | 24811 AUD pp |
| Category 5 | 25669 AUD pp |
| Category 3 Solo | 28366 AUD pp |
| Category 6 | 29463 AUD pp |

18-Feb-2026 to 26-Feb-2026

| | |
|-----------------|--------------|
| Category 1 | 16679 AUD pp |
| Category 2 | 18354 AUD pp |
| Category 3 | 18869 AUD pp |
| Category 4 | 20171 AUD pp |
| Category 1 Solo | 23989 AUD pp |
| Category 5 | 24823 AUD pp |
| Category 3 Solo | 27531 AUD pp |
| Category 6 | 28617 AUD pp |



Wild Earth Travel

Small Ships, Big Adventures

0800 945 3327 (within New Zealand) | +64 (0) 3 365 1355 | **1800 107 715** (within Australia)

info@wildearth-travel.com | **wildearth-travel.com**



Wild Earth Travel

Small Ships, Big Adventures

wildearth-travel.com

info@wildearth-travel.com

SPECIAL OFFERS

****SUITE EXCLUSIVES****

Spacious living areas and incredible views immerse you in the beauty of your marine surroundings. Our new Suite Exclusives package helps make your voyage all the more memorable.

****10% OFF BACK-TO-BACK VOYAGES****

Save 10% on consecutive departures, applicable on voyage fares only and not valid on extensions or airfare. Valid for new bookings only, subject to availability, and may not be combined with other offers. Call for details.

****SAVE 5% TRAVELING AS A GROUP****

Save 5% when traveling as a group of eight or more people. Valid on voyage fares only and not applicable on extensions or airfare. Deposit, final payments, and cancellation policies for group travel vary from our regular policies. Valid for new bookings only, subject to availability, and may not be combined with other offers. Call for details.

****BRINGING THE KIDS****

We believe sharing an expedition with your kids or grandkids is a life-enhancing experience. So take \$715 off for each child under the age of 18.

****CELEBRATE LIFE'S MILESTONES****

Celebrate a milestone with a group of eight or more and enjoy a special amenity package including: 5% savings on voyage fares, custom group photo, US\$150 shipboard credit for the group, and other special gifts. Milestone celebration to be communicated at time of booking.

****COMBINING OFFERS****

Combine now and save!

Certain offers may be combinable, up to two savings opportunities, except where noted otherwise. For example, travel with a group of 8 or more on back-to-back expeditions, and take advantage of both savings.



Wild Earth Travel
Small Ships, Big Adventures

0800 945 3327 (within New Zealand) | +64 (0) 3 365 1355 | **1800 107 715** (within Australia)

info@wildearth-travel.com | **wildearth-travel.com**