

Wild Earth Travel

Small Ships, Big Adventures

wildearth-travel.com

info@wildearth-travel.com

AUSTRALIA'S ICONIC KIMBERLEY - FROM BROOME OR DARWIN LUXURY CRUISE

This cruise is intended for English-speaking passengers. All lectures, comments by naturalists during the outings and visits as well as the announcements and services on board will be in English. Set sail for the wild and grandiose landscapes of Kimberley, following this exceptional PONANT itinerary. From Broome to Darwin, embark for an 11-day expedition cruise. On the Lacepede Islands, take the time to admire the abundance of nesting birds as well as the large population of turtles residing in the lagoon. In one of the most picturesque parts of the region, the Hunter River, you will see wild mangrove forests where saltwater crocodiles live along with many species of birds. During your cruise, the magnificent bays of Vansittart and Swift will offer you exceptional panoramas, between islands, secret inlets, caves and rocky overhangs. The highpoint of this cruise will undoubtedly be the discovery of the King George River and the majestic Twin Falls, the highest falls in Western Australia. You will also visit Collier Bay, where you will be able to admire the Montgomery Reef, home to vast expanses of lagoons and immense coral reefs. Your ship will take you along one of the most spectacular coasts in the entire region. With their falls, abrupt gorges, savannah, calm waters and desolate mountain chains, the wild lands of Kimberley are the promise of an exceptional adventure.



ITINERARY

Day 1 BROOME

Located in the northwest of the Kimberley region and in the far north of Western Australia, the town of Broome is reputed for its history and its glorious pearling era. The fascinating Chinatown district, which is the historic city centre, and the famous Japanese Cemetery, dates back to 1896, and has a past marked by the immigration of numerous Chinese and Japanese workers, attracted by the prosperous pearl industry at the end of the 19th century and at the beginning of the 20th century. Broome is also famous for the "Staircase to the Moon", an optical illusion created by the Moon reflecting on the sand banks at low tide, like a staircase climbing up towards the sky, a unique spectacle provided by nature...

Day 2 LACEPEDE ISLANDS

Wild Earth Travel

Small Ships, Big Adventures

0800 945 3327 (within New Zealand) | +64 (0) 3 365 1355 | **1800 107 715** (within Australia)

info@wildearth-travel.com | **wildearth-travel.com**



Wild Earth Travel

Small Ships, Big Adventures

wildearth-travel.com

info@wildearth-travel.com

The Lacepede Islands are Western Australia's most important breeding habitat for Green Turtles (*Chelonia mydas*), and have been named by BirdLife International as an Important Bird Area (IBA). The breeding colony of Brown Boobies is possibly the largest in the world. Up to 20,000 Roseate Terns have also been recorded here. Other birds breeding on the islands include Masked Boobies, Australian Pelicans, Lesser Frigatebirds, Eastern Reef Egrets, Silver Gulls, Crested, Bridled and Lesser Crested Terns, Common Noddies, Pied and Sooty Oystercatchers. Join your expedition team for a guided zodiac tour to view the prolific wildlife. Due to the sensitive nature of the environment, landings are prohibited on the Lacepede Islands.

Days 3 - 4 COLLIER BAY

Lying to the east of the Buccaneer archipelago, the ancient landscapes of Collier Bay have been shaped by the massive tidal movements the region is renowned for, creating a photographer's paradise. With a tidal range exceeding 14 metres, recorded near Yule entrance at the southern end of the bay, they are among the largest in the world. This massive daily movement of water creates unique phenomena that occur nowhere else in the world. Nestled in the centre of the Bay is Montgomery Reef, the world's largest inshore reef system. As the tide falls a raging torrent of water cascades off the top of the reef, creating turbulent 'rivers' and mini waterfalls. At the Southern end of the Bay, Talbot Bay is home to the world's only 'Horizontal Falls' described by Sir David Attenborough as "One of the greatest wonders of the natural world." Hidden in the many caves and grottos of this ancient landscape are a multitude of ancient Rock Art galleries. Here you can find spectacular examples of the Wandjina and Gwion Gwion styles. As we are at the mercy of weather and tide conditions in this region, the activities mentioned above are only possible experiences and can't be guaranteed.

Day 5 CAREENING BAY

Careening Bay was named by Lieutenant Phillip Parker King after his ship, HMC Mermaid, was careened there during his third voyage of discovery in 1820. King surveyed the western coast to complete the map initiated by Flinders 20 years earlier. The Mermaid had been leaking badly and King needed to find a shallow sandy bay where he could careen his boat to undertake repairs. At a high tide, on a warm September afternoon, he ran the Mermaid onto the sands. For ten days the Mermaid crew worked hard before refloating the vessel. The ship's carpenter carved the name of the vessel and

the year into a conspicuous boab tree. The famous boab tree is now 3 metres wide and National Heritage listed. A reminder of a by gone era of exploration!

Day 6 HUNTER RIVER

Arguably one of the most scenic parts of the Kimberley coast, Prince Frederick Harbour and the Hunter River are lined with ancient rainforest pockets, pristine mangroves and mosaic sandstone cliffs. They are considered to be some of the most pristine mangrove forests in the world, containing up to 18 different species, supporting a rich and diverse fauna. The sandstone escarpment at the river mouth, known as "Kampamantiya" rises over 200 metres high before giving way to extensive mud banks and mangrove forests home to numerous bird species and the iconic saltwater crocodile. Our expert Expedition Team will share their knowledge with you as you explore this pristine mangrove environment by zodiac keeping a constant lookout for wildlife. You will also have the opportunity to reach the Mitchell Falls by helicopter from Naturalist Island beach.

Day 7 SWIFT BAY

The Bonaparte Archipelago, is a stunningly rugged maze of islands stretching almost 150 km along Western Australia's remote Kimberley coast. Its colour and scale conspire to take ones' breath away. Its distant location has meant it has remained an unspoilt and remarkably pristine location to explore and experience. Phillip Parker King named "Swift's bay" after Jonathon Swift (1667-1745) the author of Gulliver's travels. The 'T' shaped bay is composed of heavily fractured sandstone providing an abundance of rock shelters. On the walls of these shelters are examples of both Wandjina and Gwion Gwion style rock art. Join your expedition team ashore for a guided walk to a number of rock art galleries depicting these unique rock art styles.

Day 8 VANSITTART BAY

Jar Island contains ancient rock art galleries depicting the Gwion Gwion style unique to the Kimberley region. Mainly neglected by, or unknown to, the early European researchers of Aboriginal culture in the Kimberley in favour of the dominant and more dramatic Wandjina art, Gwion Gwion art has in recent years gained world prominence. It is generally thought that this art may extend back to over 30,000 years before our time and represents the first wave of seagoing colonisers of the Australian continent. As it is, these are the oldest



Wild Earth Travel

Small Ships, Big Adventures

wildearth-travel.com

info@wildearth-travel.com

detailed depiction of human figures in the world. Join your Expedition Team ashore for a short walk, past some fascinating rock formations, to the site of the Gwion Gwion art galleries.

Day 9 KING GEORGE RIVER

The journey up the King George River is nothing short of breathtaking. The 80-metre-high sides of the gorge display varying degrees of weathering of the ancient Warton sandstone. The colours and textures of the gorge change with the light as you travel further up the river creating a continual changing scenery that is simply stunning. The journey culminates at the King George twin falls; the highest single-drop falls in the whole of the Kimberley (80 m or 260 ft). Fed by wet season run-off the level of water cascading over the falls varies from year to year. Your Expedition Team will escort you in either the zodiacs or ships tenders to the foot of the twin falls, and explain all about the stunning geological formations of the canyon.

Day 10 AT SEA

During your journey at sea, make the most of the many services and activities on board. Treat yourself to a moment of relaxation in the spa or stay in shape in the fitness centre. Depending on the season, let yourself be tempted by the swimming pool or a spot of sunbathing. This journey without a port of call will also be an opportunity to enjoy the conferences or shows proposed on board, depending on the activities offered, or to do some shopping in the boutique or to meet the PONANT photographers in their dedicated space. As for lovers of the open sea, they will be able to visit the ship's upper deck to admire the spectacle of the waves and perhaps be lucky enough to observe marine species. A truly enchanted interlude, combining comfort, rest and entertainment.

Day 11 DARWIN

Darwin is located in Australia's Northern Territory which is also known as the "Top End". It is the capital city and the most populated town of the Northern Territory. Darwin is a beautiful tropical city, a melting pot of people and cultures, over 50 different cultures live and work side by side that prides itself in its unique and friendly laid-back lifestyle. Come discover the town's still recent history through its emblematic buildings such as the new Parliament House opened in 1994, a magnificent example of tropical architecture or

Admiralty House declared heritage place, a tropical-style home elevated on stilts that has survived two cyclones and numerous air raids.

Please Note:

This itinerary is given as an indication only. Based on tide times and weather conditions, the Captain and the Expedition Leader may need to switch the order of certain ports of call around to ensure guests have the best possible experience.

Wild Earth Travel
Small Ships, Big Adventures

0800 945 3327 (within New Zealand) | +64 (0) 3 365 1355 | **1800 107 715** (within Australia)

info@wildearth-travel.com | **wildearth-travel.com**

Wild Earth Travel

Small Ships, Big Adventures

wildearth-travel.com

info@wildearth-travel.com

YOUR SHIP: LE JACQUES CARTIER

YOUR SHIP: Le Jacques Cartier

VESSEL TYPE: Luxury

LENGTH:

PASSENGER CAPACITY: 92 cabins

BUILT/REFURBISHED: 2018/2019

Featuring innovative and environmentally-friendly equipment, elegantly designed staterooms, spacious suites with large windows, and lounge areas that open onto the outside, this new limited-capacity yacht boasting just 92 staterooms and suites will offer you a truly unique cruising experience.

As the sixth ship in a new series that remains true to the Ponant spirit, Le Jacques Cartier will embody the unique atmosphere that is the cruise line's hallmark: a subtle blend of refinement, intimacy and comfort.

Aboard this ship that flies the French flag, you will experience the incomparable pleasure of an intimate cruise, with the possibility of exploring an ever-increasing range of destinations in an ethnic-chic ambiance with luxury service.

Experience a luxurious setting where the accent is on authenticity and passion for travel.

RESTAURANTS

As it is an essential part of French culture, gastronomy will naturally have pride of place aboard this new ship.

To the back of Deck 4, you will find a 260 m² panoramic restaurant which can accommodate all of our passengers in a single sitting. Designed differently to that on our other ships, this

dining area, which opens onto the outside, will have a buffet of salads, desserts and cheeses at your disposal. Our discreet and attentive crew will provide table service for hot meals.

In a relaxed atmosphere, an outdoor grill on Deck 3 will serve grilled meats with a variety of salads and desserts.

PUBLIC AREAS

Le Jacques Cartier has many common areas that are designed and equipped to meet all of your needs while preserving the intimacy of each passenger.

A 140 m² reception area includes:

A reception/concierge desk,

An excursions desk,

The ship's administrative services,

The sales office, manned by our Guest Relations Officer,

Our 50 m² boutique which sells clothing, jewellery, beauty products, postcards and various accessories,

Toilets accessible to passengers with reduced mobility.

A new hydraulic platform with adjustable height provides:

Easier boarding than on any other cruise ship,

Easier Zodiac embarkation and disembarkation for expeditions,

Easier access to the sea for swimming and practising various water sports such as kayaking or paddle-boarding.

A pool deck offering:

A pool with a panoramic view, equipped with a counter-current swimming system,

A pleasant solarium,

An outdoor bar and lounge with armchairs and sofas.

A 200 m² main lounge which can accommodate all of our passengers to share convivial moments and to host activities

Wild Earth Travel

Small Ships, Big Adventures

wildearth-travel.com

info@wildearth-travel.com

organised during the day or evening.

Lastly, a theatre that seats 188, equipped with:

The latest sound and lighting technology,

A LED wall as the stage backdrop, for the projection of high-resolution images and videos.



and videos.

Wild Earth Travel

Small Ships, Big Adventures

0800 945 3327 (within New Zealand) | +64 (0) 3 365 1355 | **1800 107 715** (within Australia)

info@wildearth-travel.com | **wildearth-travel.com**

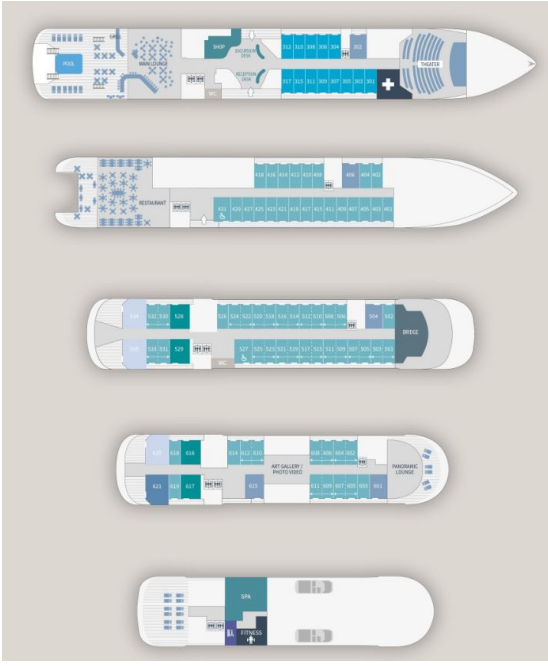


Wild Earth Travel
Small Ships, Big Adventures

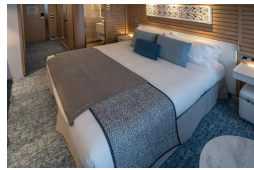
wildearth-travel.com

info@wildearth-travel.com

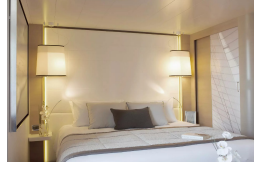
INSIDE YOUR SHIP



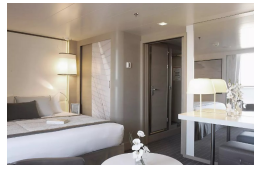
DELUXE STATEROOM



DeLuxe Stateroom



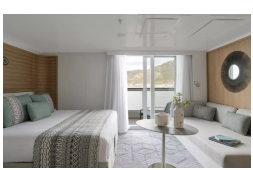
Deluxe Suite



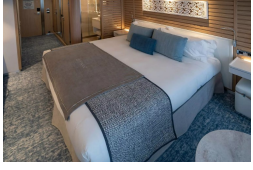
Deluxe Suite Deck 4



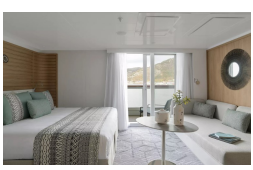
DELUXE SUITE



Deluxe Stateroom



Deluxe Suite Deck 3



Deluxe Suite Deck 5



Wild Earth Travel
Small Ships, Big Adventures

0800 945 3327 (within New Zealand) | +64 (0) 3 365 1355 | **1800 107 715** (within Australia)

info@wildearth-travel.com | wildearth-travel.com

Wild Earth Travel

Small Ships, Big Adventures

wildearth-travel.com

info@wildearth-travel.com

PRICING

24-May-2025 to 03-Jun-2025

DELUXE STATEROOM	13880 AUD pp
PRESTIGE STATEROOM DECK 4	15410 AUD pp
PRESTIGE STATEROOM DECK 5	16150 AUD pp
PRESTIGE STATEROOM DECK 6	17070 AUD pp
Deluxe Suite Deck 4	23310 AUD pp
Deluxe Suite Deck 5	23310 AUD pp
Deluxe Suite Deck 6	23310 AUD pp
DELUXE SUITE	23310 AUD pp
PRESTIGE SUITE DECK 5	28160 AUD pp
PRESTIGE SUITE DECK 6	29530 AUD pp
PRIVILEGE SUITE	30450 AUD pp
Privilege Suite Deck 6	30450 AUD pp
GRAND DELUXE SUITE	31350 AUD pp
Grand Deluxe Suite Deck 6	31350 AUD pp
OWNER'S SUITE	38180 AUD pp

03-Jun-2025 to 13-Jun-2025

DELUXE STATEROOM	16670 AUD pp
PRESTIGE STATEROOM DECK 4	18490 AUD pp
PRESTIGE STATEROOM DECK 5	19410 AUD pp
PRESTIGE STATEROOM DECK 6	20500 AUD pp
Deluxe Suite Deck 4	26740 AUD pp
Deluxe Suite Deck 5	26740 AUD pp
Deluxe Suite Deck 6	26740 AUD pp
DELUXE SUITE	26740 AUD pp
PRESTIGE SUITE DECK 5	32250 AUD pp
PRESTIGE SUITE DECK 6	33720 AUD pp
OWNER'S SUITE	34726 AUD pp
Privilege Suite Deck 6	34810 AUD pp
PRIVILEGE SUITE	34810 AUD pp
Grand Deluxe Suite Deck 6	35900 AUD pp
GRAND DELUXE SUITE	35900 AUD pp

Wild Earth Travel

Small Ships, Big Adventures

wildearth-travel.com

info@wildearth-travel.com

PRICING

13-Jun-2025 to 23-Jun-2025

DELUXE STATEROOM	15010 AUD pp
PRESTIGE STATEROOM DECK 4	16640 AUD pp
PRESTIGE STATEROOM DECK 5	17460 AUD pp
PRESTIGE STATEROOM DECK 6	18440 AUD pp
DELUXE SUITE	24020 AUD pp
Deluxe Suite Deck 6	24020 AUD pp
Deluxe Suite Deck 4	24020 AUD pp
Deluxe Suite Deck 5	24020 AUD pp
PRESTIGE SUITE DECK 5	28950 AUD pp
PRESTIGE SUITE DECK 6	30270 AUD pp
PRIVILEGE SUITE	31240 AUD pp
Privilege Suite Deck 6	31240 AUD pp
GRAND DELUXE SUITE	32220 AUD pp
Grand Deluxe Suite Deck 6	32220 AUD pp
OWNER'S SUITE	38180 AUD pp

DELUXE STATEROOM	14180 AUD pp
PRESTIGE STATEROOM DECK 4	15720 AUD pp
PRESTIGE STATEROOM DECK 5	16490 AUD pp
PRESTIGE STATEROOM DECK 6	17410 AUD pp
Deluxe Suite Deck 4	22660 AUD pp
DELUXE SUITE	22660 AUD pp
Deluxe Suite Deck 5	22660 AUD pp
Deluxe Suite Deck 6	22660 AUD pp
PRESTIGE SUITE DECK 5	27300 AUD pp
PRESTIGE SUITE DECK 6	28540 AUD pp
Privilege Suite Deck 6	29460 AUD pp
PRIVILEGE SUITE	29460 AUD pp
Grand Deluxe Suite Deck 6	30380 AUD pp
GRAND DELUXE SUITE	30380 AUD pp
OWNER'S SUITE	38180 AUD pp

23-Jun-2025 to 03-Jul-2025



PRICING

02-Jul-2025 to 12-Jul-2025

Superior Stateroom	13850 AUD pp
DeLuxe Stateroom	15010 AUD pp
Prestige Stateroom - Deck 4	16640 AUD pp
Prestige Stateroom - Deck 5	17460 AUD pp
Prestige Stateroom - Deck 6	18440 AUD pp
Deluxe Suite	24020 AUD pp
Prestige Suite - Deck 5	28950 AUD pp
Prestige Suite - Deck 6	30270 AUD pp
Owner's Suite	38180 AUD pp

03-Jul-2025 to 13-Jul-2025

DELUXE STATEROOM	15010 AUD pp
PRESTIGE STATEROOM DECK 4	16640 AUD pp
PRESTIGE STATEROOM DECK 5	17460 AUD pp
PRESTIGE STATEROOM DECK 6	18440 AUD pp
Deluxe Suite Deck 6	24020 AUD pp
Deluxe Suite Deck 5	24020 AUD pp
Deluxe Suite Deck 4	24020 AUD pp
DELUXE SUITE	24020 AUD pp
PRESTIGE SUITE DECK 5	28950 AUD pp
PRESTIGE SUITE DECK 6	30270 AUD pp
PRIVILEGE SUITE	31240 AUD pp
Privilege Suite Deck 6	31240 AUD pp
GRAND DELUXE SUITE	32220 AUD pp
Grand Deluxe Suite Deck 6	32220 AUD pp
OWNER'S SUITE	38180 AUD pp

12-Jul-2025 to 22-Jul-2025

Superior Stateroom	13090 AUD pp
DeLuxe Stateroom	14180 AUD pp
Prestige Stateroom - Deck 4	15720 AUD pp
Prestige Stateroom - Deck 5	16490 AUD pp
Prestige Stateroom - Deck 6	17410 AUD pp
Deluxe Suite	22660 AUD pp
Prestige Suite - Deck 5	27300 AUD pp
Prestige Suite - Deck 6	28540 AUD pp
Owner's Suite	34726 AUD pp



PRICING

13-Jul-2025 to 23-Jul-2025

DELUXE STATEROOM	14180 AUD pp
PRESTIGE STATEROOM DECK 4	15720 AUD pp
PRESTIGE STATEROOM DECK 5	16490 AUD pp
PRESTIGE STATEROOM DECK 6	17410 AUD pp
Deluxe Suite Deck 4	22660 AUD pp
DELUXE SUITE	22660 AUD pp
Deluxe Suite Deck 6	22660 AUD pp
Deluxe Suite Deck 5	22660 AUD pp
PRESTIGE SUITE DECK 5	27300 AUD pp
PRESTIGE SUITE DECK 6	28540 AUD pp
Privilege Suite Deck 6	29460 AUD pp
PRIVILEGE SUITE	29460 AUD pp
Grand Deluxe Suite Deck 6	30380 AUD pp
GRAND DELUXE SUITE	30380 AUD pp
OWNER'S SUITE	34726 AUD pp

Superior Stateroom	12910 AUD pp
DeLuxe Stateroom	14000 AUD pp
Prestige Stateroom - Deck 4	15540 AUD pp
Prestige Stateroom - Deck 5	16310 AUD pp
Prestige Stateroom - Deck 6	17230 AUD pp
Deluxe Suite	22480 AUD pp
Prestige Suite - Deck 5	27120 AUD pp
Prestige Suite - Deck 6	28360 AUD pp
Owner's Suite	38740 AUD pp
Darwin to Darwin Voyage	0 pp

22-Jul-2025 to 01-Aug-2025



Wild Earth Travel

Small Ships, Big Adventures

wildearth-travel.com

info@wildearth-travel.com

PRICING

23-Jul-2025 to 02-Aug-2025

DELUXE STATEROOM	14180 AUD pp
PRESTIGE STATEROOM DECK 4	15720 AUD pp
PRESTIGE STATEROOM DECK 5	16490 AUD pp
PRESTIGE STATEROOM DECK 6	17410 AUD pp
Deluxe Suite Deck 4	22660 AUD pp
Deluxe Suite Deck 5	22660 AUD pp
Deluxe Suite Deck 6	22660 AUD pp
DELUXE SUITE	22660 AUD pp
PRESTIGE SUITE DECK 5	27300 AUD pp
PRESTIGE SUITE DECK 6	28540 AUD pp
Privilege Suite Deck 6	29460 AUD pp
PRIVILEGE SUITE	29460 AUD pp
GRAND DELUXE SUITE	30380 AUD pp
Grand Deluxe Suite Deck 6	30380 AUD pp
OWNER'S SUITE	38180 AUD pp

Superior Stateroom	13090 AUD pp
DeLuxe Stateroom	14180 AUD pp
Prestige Stateroom - Deck 4	15720 AUD pp
Prestige Stateroom - Deck 5	16490 AUD pp
Prestige Stateroom - Deck 6	17410 AUD pp
Deluxe Suite	22660 AUD pp
Prestige Suite - Deck 5	27300 AUD pp
Prestige Suite - Deck 6	28540 AUD pp
Owner's Suite	38180 AUD pp

01-Aug-2025 to 11-Aug-2025

Wild Earth Travel
Small Ships, Big Adventures

0800 945 3327 (within New Zealand) | +64 (0) 3 365 1355 | **1800 107 715** (within Australia)

info@wildearth-travel.com | wildearth-travel.com

Wild Earth Travel

Small Ships, Big Adventures

wildearth-travel.com

info@wildearth-travel.com

PRICING

02-Aug-2025 to 12-Aug-2025

DELUXE STATEROOM	14180 AUD pp
PRESTIGE STATEROOM DECK 4	15720 AUD pp
PRESTIGE STATEROOM DECK 5	16490 AUD pp
PRESTIGE STATEROOM DECK 6	17410 AUD pp
DELUXE SUITE	22660 AUD pp
Deluxe Suite Deck 6	22660 AUD pp
Deluxe Suite Deck 4	22660 AUD pp
Deluxe Suite Deck 5	22660 AUD pp
PRESTIGE SUITE DECK 5	27300 AUD pp
PRESTIGE SUITE DECK 6	28540 AUD pp
PRIVILEGE SUITE	29460 AUD pp
Privilege Suite Deck 6	29460 AUD pp
Grand Deluxe Suite Deck 6	30380 AUD pp
GRAND DELUXE SUITE	30380 AUD pp
OWNER'S SUITE	34726 AUD pp

DELUXE STATEROOM	14000 AUD pp
PRESTIGE STATEROOM DECK 4	15540 AUD pp
PRESTIGE STATEROOM DECK 5	16310 AUD pp
PRESTIGE STATEROOM DECK 6	17230 AUD pp
DELUXE SUITE	22480 AUD pp
Deluxe Suite Deck 6	22480 AUD pp
Deluxe Suite Deck 4	22480 AUD pp
Deluxe Suite Deck 5	22480 AUD pp
PRESTIGE SUITE DECK 5	27120 AUD pp
PRESTIGE SUITE DECK 6	28360 AUD pp
PRIVILEGE SUITE	29280 AUD pp
Privilege Suite Deck 6	29280 AUD pp
GRAND DELUXE SUITE	30200 AUD pp
Grand Deluxe Suite Deck 6	30200 AUD pp
OWNER'S SUITE	38000 AUD pp
Darwin to Darwin Voyage	0 pp

12-Aug-2025 to 22-Aug-2025

Wild Earth Travel

Small Ships, Big Adventures

wildearth-travel.com

info@wildearth-travel.com

PRICING

22-Aug-2025 to 01-Sep-2025

DELUXE STATEROOM	14180 AUD pp
PRESTIGE STATEROOM DECK 4	15720 AUD pp
PRESTIGE STATEROOM DECK 5	16490 AUD pp
PRESTIGE STATEROOM DECK 6	17410 AUD pp
Deluxe Suite Deck 4	22660 AUD pp
Deluxe Suite Deck 5	22660 AUD pp
Deluxe Suite Deck 6	22660 AUD pp
DELUXE SUITE	22660 AUD pp
PRESTIGE SUITE DECK 5	27300 AUD pp
PRESTIGE SUITE DECK 6	28540 AUD pp
PRIVILEGE SUITE	29460 AUD pp
Privilege Suite Deck 6	29460 AUD pp
Grand Deluxe Suite Deck 6	30380 AUD pp
GRAND DELUXE SUITE	30380 AUD pp
OWNER'S SUITE	38180 AUD pp

31-Aug-2025 to 10-Sep-2025

Superior Stateroom	13850 AUD pp
DeLuxe Stateroom	15010 AUD pp
Prestige Stateroom - Deck 4	16640 AUD pp
Prestige Stateroom - Deck 5	17460 AUD pp
Prestige Stateroom - Deck 6	18440 AUD pp
Deluxe Suite	24020 AUD pp
Prestige Suite - Deck 5	28950 AUD pp
Prestige Suite - Deck 6	30270 AUD pp
Owner's Suite	34726 AUD pp

Wild Earth Travel

Small Ships, Big Adventures

wildearth-travel.com

info@wildearth-travel.com

PRICING

01-Sep-2025 to 11-Sep-2025

DELUXE STATEROOM	14180 AUD pp
PRESTIGE STATEROOM DECK 4	15720 AUD pp
PRESTIGE STATEROOM DECK 5	16490 AUD pp
PRESTIGE STATEROOM DECK 6	17410 AUD pp
Deluxe Suite Deck 4	22660 AUD pp
DELUXE SUITE	22660 AUD pp
Deluxe Suite Deck 5	22660 AUD pp
Deluxe Suite Deck 6	22660 AUD pp
PRESTIGE SUITE DECK 5	27300 AUD pp
PRESTIGE SUITE DECK 6	28540 AUD pp
PRIVILEGE SUITE	29460 AUD pp
Privilege Suite Deck 6	29460 AUD pp
Grand Deluxe Suite Deck 6	30380 AUD pp
GRAND DELUXE SUITE	30380 AUD pp
OWNER'S SUITE	34726 AUD pp

DELUXE STATEROOM	14180 AUD pp
PRESTIGE STATEROOM DECK 4	15720 AUD pp
PRESTIGE STATEROOM DECK 5	16490 AUD pp
PRESTIGE STATEROOM DECK 6	17410 AUD pp
Deluxe Suite Deck 5	22660 AUD pp
Deluxe Suite Deck 4	22660 AUD pp
DELUXE SUITE	22660 AUD pp
Deluxe Suite Deck 6	22660 AUD pp
PRESTIGE SUITE DECK 5	27300 AUD pp
PRESTIGE SUITE DECK 6	28540 AUD pp
Privilege Suite Deck 6	29460 AUD pp
PRIVILEGE SUITE	29460 AUD pp
GRAND DELUXE SUITE	30380 AUD pp
Grand Deluxe Suite Deck 6	30380 AUD pp
OWNER'S SUITE	38180 AUD pp

11-Sep-2025 to 21-Sep-2025



wildearth-travel.com

info@wildearth-travel.com

PRICING

21-Sep-2025 to 01-Oct-2025

Deluxe Stateroom	13350 AUD pp
Prestige Deck 4	14790 AUD pp
Prestige Deck 5	15520 AUD pp
Prestige Deck 6	16380 AUD pp
Deluxe Suite Deck 4	21300 AUD pp
Deluxe Suite Deck 5	21300 AUD pp
Deluxe Suite Deck 6	21300 AUD pp
Deluxe Suite Deck 3	21300 AUD pp
Prestige Deck 5 Suite	25650 AUD pp
Prestige Deck 6 Suite	26810 AUD pp
Privilege Suite Deck 5	27680 AUD pp
Privilege Suite Deck 6	27680 AUD pp
Grand Deluxe Suite Deck 5	28540 AUD pp
Grand Deluxe Suite Deck 6	28540 AUD pp

Deluxe Stateroom	13720 AUD pp
Prestige Deck 4	15210 AUD pp
Prestige Deck 5	15950 AUD pp
Prestige Deck 6	16850 AUD pp
Deluxe Suite Deck 3	21920 AUD pp
Deluxe Suite Deck 5	21920 AUD pp
Deluxe Suite Deck 4	21920 AUD pp
Deluxe Suite Deck 6	21920 AUD pp
Prestige Deck 5 Suite	26390 AUD pp
Prestige Deck 6 Suite	27580 AUD pp
Privilege Suite Deck 5	28480 AUD pp
Privilege Suite Deck 6	28480 AUD pp
Grand Deluxe Suite Deck 5	29370 AUD pp
Grand Deluxe Suite Deck 6	29370 AUD pp

13-May-2026 to 23-May-2026

Wild Earth Travel

Small Ships, Big Adventures

wildearth-travel.com

info@wildearth-travel.com

PRICING

23-May-2026 to 02-Jun-2026

Deluxe Stateroom	13730 AUD pp
Prestige Deck 4	15220 AUD pp
Prestige Deck 5	15960 AUD pp
Prestige Deck 6	16860 AUD pp
Deluxe Suite Deck 3	21930 AUD pp
Deluxe Suite Deck 6	21930 AUD pp
Deluxe Suite Deck 4	21930 AUD pp
Deluxe Suite Deck 5	21930 AUD pp
Prestige Deck 5 Suite	26400 AUD pp
Prestige Deck 6 Suite	27590 AUD pp
Privilege Suite Deck 6	28490 AUD pp
Privilege Suite Deck 5	28490 AUD pp
Grand Deluxe Suite Deck 6	29380 AUD pp
Grand Deluxe Suite Deck 5	29380 AUD pp

Deluxe Stateroom	13720 AUD pp
Prestige Deck 4	15210 AUD pp
Prestige Deck 5	15950 AUD pp
Prestige Deck 6	16850 AUD pp
Deluxe Suite Deck 3	21920 AUD pp
Deluxe Suite Deck 4	21920 AUD pp
Deluxe Suite Deck 5	21920 AUD pp
Deluxe Suite Deck 6	21920 AUD pp
Prestige Deck 5 Suite	26390 AUD pp
Prestige Deck 6 Suite	27580 AUD pp
Privilege Suite Deck 5	28480 AUD pp
Privilege Suite Deck 6	28480 AUD pp
Grand Deluxe Suite Deck 5	29370 AUD pp
Grand Deluxe Suite Deck 6	29370 AUD pp

02-Jun-2026 to 12-Jun-2026

Wild Earth Travel

Small Ships, Big Adventures

wildearth-travel.com

info@wildearth-travel.com

PRICING

12-Jun-2026 to 22-Jun-2026

Deluxe Stateroom	12880 AUD pp
Prestige Deck 4	14260 AUD pp
Prestige Deck 5	14960 AUD pp
Prestige Deck 6	15800 AUD pp
Deluxe Suite Deck 3	20530 AUD pp
Deluxe Suite Deck 6	20530 AUD pp
Deluxe Suite Deck 5	20530 AUD pp
Deluxe Suite Deck 4	20530 AUD pp
Prestige Deck 5 Suite	24700 AUD pp
Prestige Deck 6 Suite	25810 AUD pp
Privilege Suite Deck 6	26650 AUD pp
Privilege Suite Deck 5	26650 AUD pp
Grand Deluxe Suite Deck 5	27480 AUD pp
Grand Deluxe Suite Deck 6	27480 AUD pp

22-Jun-2026 to 02-Jul-2026

Deluxe Stateroom	12870 AUD pp
Prestige Deck 4	14250 AUD pp
Prestige Deck 5	14950 AUD pp
Prestige Deck 6	15790 AUD pp
Deluxe Suite Deck 4	20520 AUD pp
Deluxe Suite Deck 6	20520 AUD pp
Deluxe Suite Deck 3	20520 AUD pp
Deluxe Suite Deck 5	20520 AUD pp
Prestige Deck 5 Suite	24690 AUD pp
Prestige Deck 6 Suite	25800 AUD pp
Privilege Suite Deck 5	26640 AUD pp
Privilege Suite Deck 6	26640 AUD pp
Grand Deluxe Suite Deck 5	27470 AUD pp
Grand Deluxe Suite Deck 6	27470 AUD pp

29-Jun-2026 to 09-Jul-2026

Superior Stateroom	13470 AUD pp
Deluxe Stateroom	14580 AUD pp
Prestige Deck 4	16160 AUD pp
Prestige Deck 5	16950 AUD pp
Prestige Deck 6	17910 AUD pp
Deluxe Suite	23320 AUD pp
Prestige Deck 5 Suite	28090 AUD pp
Prestige Deck 6 Suite	29360 AUD pp

Wild Earth Travel

Small Ships, Big Adventures

wildearth-travel.com

info@wildearth-travel.com

PRICING

02-Jul-2026 to 12-Jul-2026

Deluxe Stateroom	14590 AUD pp
Prestige Deck 4	16170 AUD pp
Prestige Deck 5	16960 AUD pp
Prestige Deck 6	17920 AUD pp
Deluxe Suite Deck 3	23330 AUD pp
Deluxe Suite Deck 6	23330 AUD pp
Deluxe Suite Deck 4	23330 AUD pp
Deluxe Suite Deck 5	23330 AUD pp
Prestige Deck 5 Suite	28100 AUD pp
Prestige Deck 6 Suite	29370 AUD pp
Privilege Suite Deck 5	30330 AUD pp
Privilege Suite Deck 6	30330 AUD pp
Grand Deluxe Suite Deck 5	31280 AUD pp
Grand Deluxe Suite Deck 6	31280 AUD pp

Deluxe Stateroom	13720 AUD pp
Prestige Deck 4	15210 AUD pp
Prestige Deck 5	15950 AUD pp
Prestige Deck 6	16850 AUD pp
Deluxe Suite Deck 5	21920 AUD pp
Deluxe Suite Deck 6	21920 AUD pp
Deluxe Suite Deck 4	21920 AUD pp
Deluxe Suite Deck 3	21920 AUD pp
Prestige Deck 5 Suite	26390 AUD pp
Prestige Deck 6 Suite	27580 AUD pp
Privilege Suite Deck 6	28480 AUD pp
Privilege Suite Deck 5	28480 AUD pp
Grand Deluxe Suite Deck 6	29370 AUD pp
Grand Deluxe Suite Deck 5	29370 AUD pp

09-Jul-2026 to 19-Jul-2026

Superior Stateroom	12690 AUD pp
Deluxe Stateroom	13730 AUD pp
Prestige Deck 4	15220 AUD pp
Prestige Deck 5	15960 AUD pp
Prestige Deck 6	16860 AUD pp
Deluxe Suite	21930 AUD pp
Prestige Deck 5 Suite	26400 AUD pp
Prestige Deck 6 Suite	27590 AUD pp

12-Jul-2026 to 22-Jul-2026



0800 945 3327 (within New Zealand) | +64 (0) 3 365 1355 | **1800 107 715** (within Australia)

info@wildearth-travel.com | wildearth-travel.com

Wild Earth Travel

Small Ships, Big Adventures

wildearth-travel.com

info@wildearth-travel.com

PRICING

19-Jul-2026 to 29-Jul-2026

Superior Stateroom	12680 AUD pp
Deluxe Stateroom	13720 AUD pp
Prestige Deck 4	15210 AUD pp
Prestige Deck 5	15950 AUD pp
Prestige Deck 6	16850 AUD pp
Deluxe Suite	21920 AUD pp
Prestige Deck 5 Suite	26390 AUD pp
Prestige Deck 6 Suite	27580 AUD pp

22-Jul-2026 to 01-Aug-2026

Deluxe Stateroom	13730 AUD pp
Prestige Deck 4	15220 AUD pp
Prestige Deck 5	15960 AUD pp
Prestige Deck 6	16860 AUD pp
Deluxe Suite Deck 6	21930 AUD pp
Deluxe Suite Deck 5	21930 AUD pp
Deluxe Suite Deck 3	21930 AUD pp
Deluxe Suite Deck 4	21930 AUD pp
Prestige Deck 5 Suite	26400 AUD pp
Prestige Deck 6 Suite	27590 AUD pp
Privilege Suite Deck 5	28490 AUD pp
Privilege Suite Deck 6	28490 AUD pp
Grand Deluxe Suite Deck 6	29380 AUD pp
Grand Deluxe Suite Deck 5	29380 AUD pp

01-Aug-2026 to 11-Aug-2026

Deluxe Stateroom	13720 AUD pp
Prestige Deck 4	15210 AUD pp
Prestige Deck 5	15950 AUD pp
Prestige Deck 6	16850 AUD pp
Deluxe Suite Deck 3	21920 AUD pp
Deluxe Suite Deck 4	21920 AUD pp
Deluxe Suite Deck 5	21920 AUD pp
Deluxe Suite Deck 6	21920 AUD pp
Prestige Deck 5 Suite	26390 AUD pp
Prestige Deck 6 Suite	27580 AUD pp
Privilege Suite Deck 6	28480 AUD pp
Privilege Suite Deck 5	28480 AUD pp
Grand Deluxe Suite Deck 6	29370 AUD pp
Grand Deluxe Suite Deck 5	29370 AUD pp

Wild Earth Travel

Small Ships, Big Adventures

wildearth-travel.com

info@wildearth-travel.com

PRICING

11-Aug-2026 to 21-Aug-2026

Deluxe Stateroom	13730 AUD pp
Prestige Deck 4	15220 AUD pp
Prestige Deck 5	15960 AUD pp
Prestige Deck 6	16860 AUD pp
Deluxe Suite Deck 3	21930 AUD pp
Deluxe Suite Deck 6	21930 AUD pp
Deluxe Suite Deck 4	21930 AUD pp
Deluxe Suite Deck 5	21930 AUD pp
Prestige Deck 5 Suite	26400 AUD pp
Prestige Deck 6 Suite	27590 AUD pp
Privilege Suite Deck 6	28490 AUD pp
Privilege Suite Deck 5	28490 AUD pp
Grand Deluxe Suite Deck 6	29380 AUD pp
Grand Deluxe Suite Deck 5	29380 AUD pp

Superior Stateroom	11900 AUD pp
Deluxe Stateroom	12870 AUD pp
Prestige Deck 4	14250 AUD pp
Prestige Deck 5	14950 AUD pp
Prestige Deck 6	15790 AUD pp
Deluxe Suite	20520 AUD pp
Prestige Deck 5 Suite	24690 AUD pp
Prestige Deck 6 Suite	25800 AUD pp

18-Aug-2026 to 28-Aug-2026

Superior Stateroom	12690 AUD pp
Deluxe Stateroom	13730 AUD pp
Prestige Deck 4	15220 AUD pp
Prestige Deck 5	15960 AUD pp
Prestige Deck 6	16860 AUD pp
Deluxe Suite	21930 AUD pp
Prestige Deck 5 Suite	26400 AUD pp
Prestige Deck 6 Suite	27590 AUD pp

28-Aug-2026 to 07-Sep-2026

Wild Earth Travel
Small Ships, Big Adventures

0800 945 3327 (within New Zealand) | +64 (0) 3 365 1355 | **1800 107 715** (within Australia)

info@wildearth-travel.com | wildearth-travel.com

Wild Earth Travel

Small Ships, Big Adventures

wildearth-travel.com

info@wildearth-travel.com

PRICING

07-Sep-2026 to 17-Sep-2026

Superior Stateroom	12690 AUD pp
Deluxe Stateroom	13730 AUD pp
Prestige Deck 4	15220 AUD pp
Prestige Deck 5	15960 AUD pp
Prestige Deck 6	16860 AUD pp
Deluxe Suite	21930 AUD pp
Prestige Deck 5 Suite	26400 AUD pp
Prestige Deck 6 Suite	27590 AUD pp

**Port Taxes and Fees. From 673
AUD pp**

ADDITIONAL CHARGES:

Wild Earth Travel
Small Ships, Big Adventures

0800 945 3327 (within New Zealand) | +64 (0) 3 365 1355 | **1800 107 715** (within Australia)

info@wildearth-travel.com | **wildearth-travel.com**



wildearth-travel.com

info@wildearth-travel.com

SPECIAL OFFERS

Online prices reflect the current brochure fare savings of up to 30%. Prices may change based on demand. Terms and conditions apply. This special offer is subject to availability. Please contact us for more details.

Optional extras & upgrades

Kimberley 2025 Fly, Stay & Cruise Packages

Your Kimberley 2025 offer includes: - 10-night Kimberley luxury expedition on board PONANT's Le Jacques-Cartier or Le Soléal - Return flights from major Australian & New Zealand capital cities - 1 night's pre-cruise accommodation - Airport and hotel transfers on arrival - All Zodiac outings & shore excursions - Onboard lectures & educative talks - All meals & open bar - 24-hour room service - Complimentary unlimited Wi-Fi - Butler service in suites. Terms and Conditions apply, please contact us for more details.



0800 945 3327 (within New Zealand) | +64 (0) 3 365 1355 | 1800 107 715 (within Australia)

info@wildearth-travel.com | wildearth-travel.com