



## BAFFIN ISLAND AND GREENLAND: CIRCLING THE MIDNIGHT SUN ADVENTURE CRUISE 2026

Embark on an unforgettable Arctic adventure, journeying through the breathtaking landscapes of Nunavut and Greenland. Begin in Iqaluit, the vibrant capital of Nunavut, and sail through the stunning Frobisher Bay, keeping watch for wildlife and marveling at its geological wonders. Explore the rugged coastline of Lady Franklin Island, hike the rolling tundra of Southeast Baffin Island, and connect with the rich cultural heritage of Panniqtuuq. The dramatic beauty of the Cumberland Peninsula unfolds over two days, offering opportunities to witness abundant wildlife, traverse ice-strewn waters, and delve into the region's captivating history.

Cross the Davis Strait to Greenland, where the adventure continues with stunning fjords, towering icebergs, and majestic tundra landscapes. Immerse yourself in the cultural and natural splendor of the Sisimiut Coast, and witness the awe-inspiring Ilulissat Icefjord, a UNESCO World Heritage Site. This journey culminates with a voyage through the dramatic Kangerlussuaq Fjord, one of the world's longest fjords, where spectacular scenery sets the stage for a grand finale. Throughout the trip, enjoy expert guidance from naturalists, geologists, and Inuit expedition team members, ensuring a deep connection to the Arctic's unique environments and cultures.



### ITINERARY

#### Day 1: Iqaluit, NU, Canada

##### Begin Your Adventure

Begin your journey by transferring to the ship via Zodiac through Iqaluit harbour. Iqaluit, at the head of Frobisher Bay, is Nunavut's capital.

A population of nearly 8,000 calls the city home. Local attractions include the territorial Legislature, igloo-inspired St. Jude's Cathedral, art shops, and more.

#### Day 2: Frobisher Bay



Witness Wildlife, Geology, and Ice

Sail through this beautiful bay named for bygone explorer Martin Frobisher and stay on the lookout for wildlife.

Our geologists will have you raving about rocks! Expect compelling scenery and soak up the Arctic splendour.

### Day 3: Kitigtung (Lady Franklin Island)

Marvel at Incredible Geology

Journey to Lady Franklin Island, one of the many rugged and wildlife-rich islands dotting the south Baffin Island coast. Explore the coastline by Zodiac keeping watch for seabirds, polar bears, and marine life.

A wonderful introduction to the geology of Nunavut, examine the rock formations from the sea. With Inuit expedition team members by your side, you'll gain an intimate perspective on the captivating wildlife and geological wonders that cross your path.

### Day 4: Southeast Baffin Island

Explore Southeast Baffin Island

Spend time on the nuna--the Inuktitut name for land. Take a hike that best suits your interest accompanied by our expert expedition team who offer insightful interpretations of the surroundings.

Soak in the full seasonal blooms at the height of Arctic summer as you explore the rolling tundra. A stop here will give you a unique opportunity to connect with nature on a profound level.

### Day 5: Panniqtuuq (Pangnirtung)

Discover Spectacular Arctic Scenery

Experience Panniqtuuq, nestled on a coastal plain amidst stunning mountains and a winding river valley. Meaning "the place of the bull caribou" in Inuktitut, this charming community is embraced by snow-capped peaks and the ocean.

Soak in the area's striking beauty on a community tour, with the opportunity to

visit the Angmarlik Visitor Centre. Explore exhibits showcasing both Thule and modern Inuit life, as well as information about the community's available activities.

### Day 6-7: Cumberland Peninsula

Experience the Rugged Beauty of the Cumberland Peninsula

Spend two days exploring the Cumberland Peninsula, a stunning Arctic region steeped in cultural heritage.

Jutting from the southeastern coast of Baffin Island, this peninsula encompasses Cumberland Sound, whose wildlife sustained Inuit and their predecessors for thousands of years. We hope to experience the same natural wonders as we sail through the marine-rich waterway.

It was even considered a potential missing link in the early search for the Northwest Passage. While exploring, you'll have the opportunity to delve into the captivating maritime history of the region, gaining a deeper understanding of its past and present significance.

We'll make the most of every opportunity to hike the vast tundra and Zodiac in the ice-strewn waters. Make sure to keep an eye out for the abundant wildlife that calls this region home, including polar bears, Arctic foxes, and beluga whales.

### Day 8: At Sea – Davis Strait

Learn From Inuit in Their Homeland

Deepen your understanding of the environment, cultures, and history of the region as we sail across the Davis Strait towards Greenland. Get the privileged opportunity to engage with and learn from Inuit in their homeland.

Enjoy workshops and presentations, watch a documentary, and get out on deck! Try your hand at athletic feats during an interactive cultural performance of Inuit games.

Through shared experiences and interactions, develop a deep appreciation for the culture and gain a connection to the stunning landscapes we traverse.

Keep your binoculars ready to spot whales and seabirds who follow in our wake.





**wildearth-travel.com**

**info@wildearth-travel.com**

### Day 9–10: Western Greenland

#### Hike the Tundra

Welcome to Kalaallit Nunaat, or Greenland! Choose the activity you like best during an expedition landing on Greenland's spectacular west coast.

Whether you prefer hiking, walking, photography, or sitting contemplatively, you'll be delighted!

Alongside our team of knowledgeable naturalists, marine biologists, and geologists, embrace every opportunity to learn and deepen your connection to the landscapes we explore.

Admire the mighty mountains and the tiniest tundra flowers--a stop in this area will offer many outstanding features to pique your interest.

### Day 11: Ilulissat

#### Take a Cruise Around Towering Icebergs

Experience the remarkable beauty of Ilulissat Icefjord, renowned for its enormous icebergs. Ilulissat means "iceberg"--an apt name for this site at the outlet of the Sermeq Kujalleq glacier. It is a UNESCO World Heritage Site and the source of many of the icebergs in the North Atlantic.

Marvel at the sheer grandeur of the towering ice formations as you take a stroll along the boardwalk--truly a sight to behold!

Visit the town, with its museums, charming cafes, craft shops, and bustling fishing harbour. Be sure to make your way to the Ilulissat Icefjord Centre, where you can delve into the fascinating narratives surrounding the ice and gain a deeper appreciation for this awe-inspiring natural wonder.

### Day 12–13: Sisimiut Coast

#### Witness Stunning Glaciers, Islands, and Fjords

Explore West Greenland's complex coastal waterways that include glaciers, islands, and fjords against a towering mountain backdrop, with plentiful opportunities for hiking and Zodiac cruising.

Learn about the Saqqaq, Dorset, Thule, and modern Inuit cultures that have

called the Sisimiut region home for the past 4,500 years.

The waters are relatively warm here, due to the West Greenland Current and the subarctic location.

### Day 14: Kangerlussuaq, Greenland

#### Cross the Arctic Circle

Kangerlussuaq Fjord (Søndre Strømfjord) is one of the longest fjords in the world and boasts 190 kilometres of superb scenery. We end our adventure by sailing up this dramatic fjord.

Kangerlussuaq, the town at its eastern head, is a former U.S. Air Force base. Here we will disembark for our return charter flight to Toronto, ON.

#### Please note:

Itineraries are subject to change.

**Wild Earth Travel**  
*Small Ships, Big Adventures*

**0800 945 3327** (within New Zealand) | +64 (0) 3 365 1355 | **1800 107 715** (within Australia)

info@wildearth-travel.com | **wildearth-travel.com**

# Wild Earth Travel

*Small Ships, Big Adventures*



**wildearth-travel.com**

**info@wildearth-travel.com**

## YOUR SHIP: OCEAN NOVA

<b>YOUR SHIP:</b>	<b>Ocean Nova</b>
<b>VESSEL TYPE:</b>	<b>Expedition</b>
<b>LENGTH:</b>	<b>73 metres</b>
<b>PASSENGER CAPACITY:</b>	<b>86</b>
<b>BUILT/REFURBISHED:</b>	<b>1992 / 2005</b>

atmosphere on board. Travelling with this small expedition ship offers an entirely different experience and perspective than you can get on a larger and more conventional cruise ship.

Ice Class: Ice 1B, E0 (Hull Ice 1A)



ull Ice 1A)

The ice-strengthened expedition ship Ocean Nova was built in Denmark in 1992 with high ice class to serve Greenland's west coast. In 2004 to 2005 she was completely refurbished and has now a career as a small and comfortable expedition ship. The Ocean Nova accommodates 86 passengers in single, double and triple cabins, all with sea-view and private facilities. The double cabins have either two lower beds or upper and lower beds. The triple cabins have upper and lower beds. In your cabin you will also find a desk with chair and ample storage space for clothes and equipment.

In the dining room you are treated to delicious meals in between landings and in the panorama lounge you can enjoy a drink with a breathtaking view of the surrounding polar landscape. This is where PolarQuest's on board specialists entertain and educate you with lectures on polar biology, history, geology and conservation. There is also a library with panoramic views and a good selection of polar books. On board there is a satellite phone, gym and medical doctor. Passengers are welcome on the bridge around the clock and there is always something to see or search for from the spacious observation decks. The ship has North European officers and there is a friendly and informal

Wild Earth Travel

*Small Ships, Big Adventures*

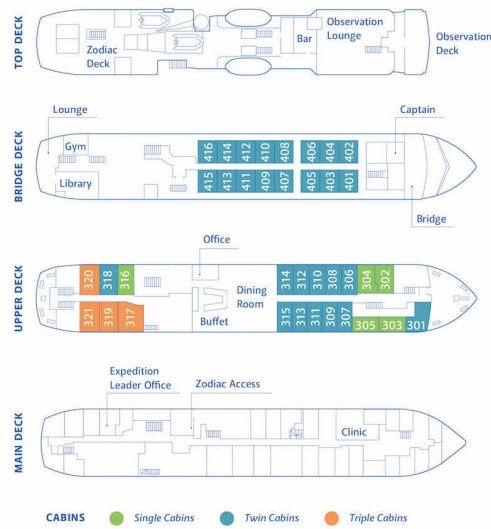
**0800 945 3327** (within New Zealand) | +64 (0) 3 365 1355 | **1800 107 715** (within Australia)

info@wildearth-travel.com | **wildearth-travel.com**





**INSIDE YOUR SHIP**



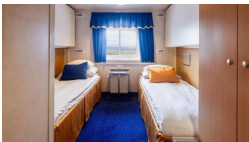
Cabin Category 1



Cabin Category 2



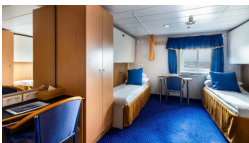
Cabin Category 3



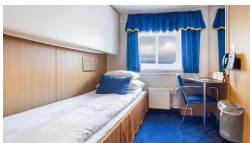
Cabin Category 4



Cabin Category 5



Cabin Category 6





## PRICING

15-Aug-2026 to 28-Aug-2026

Cabin Category 1	9995 USD pp
Cabin Category 2	11995 USD pp
Cabin Category 3	13195 USD pp
Cabin Category 4	13995 USD pp
Cabin Category 5	14995 USD pp
Cabin Category 6	19995 USD pp

### Optional extras & upgrades

#### Northbound Charter Flight 1045 USD

Northbound Charter Flight: Ottawa, ON, Canada to Iqaluit NU, Canada.  
Early-morning departure.

#### Southbound Charter Flight 1595 USD

Southbound Charter Flight: Kangerlussuaq, Greenland to Toronto, ON, Canada.  
Evening arrival.