



# Wild Earth Travel

*Small Ships, Big Adventures*

**wildearth-travel.com**

**info@wildearth-travel.com**

## BRITISH ARCHIPELAGOS AND CELTIC SHORES LUXURY CRUISE

From the coast of Brittany to the shores of Ireland , PONANT invites you to spend unique moments where the English Channel meets the Celtic Sea. This 9-day interlude between Saint-Malo and Dublin aboard *\_Le Lyrial\_* will take you to the heart of landscapes of wild and melancholic beauty. Between lush meadows, craggy cliffs, small colourful villages, peat bogs and moors , succumb to the charms of these lands steeped in mystery.

You will set sail from Saint-Malo , a town famous for the legendary Route du Rhum yacht race. The city of privateers, the diversity of its heritage and its rampart walks will not fail to delight you.

*\_Le Lyrial\_* will then make its way north-west to reach the Channel Islands. Here, nature reigns and offers the perfect getaway. In Guernsey , fall in love with this island that is as captivating as it is mystical. Numerous dolmens and menhirs dot the island, bearing witness to its long history and rich heritage. Next, edged with verdant plains and rocky cliffs, Herm , the smallest of the Channel Islands, will surprise you with its wild, unexplored and untouched quality.

Next, you will sail to legendary Cornwall. In Fowey , you will marvel at Mother Nature's masterpieces. There, you will discover a spellbinding environment of majestic cliffs and vast natural spaces, conducive to escape and tranquillity.

Your ship will then sail towards the Isles of Scilly , a strange little

archipelago whose landscapes seem to have come straight out of Enid Blyton's famous story, *\_The Rockingdown Mystery\_*. Here, long sandy beaches lie alongside green fields, while ruins of old castles stand proud on hilltops.

Your ship will head for the shores of Wales and you will sail around the island of Skomer in a zodiac dinghy. This national nature reserve surrounded by spectacular cliffs is one of the country's most beautiful sites. An ornithological paradise, it is teeming with many species, for example, Manx shearwaters, razorbills, gannets and fulmars. The waters surrounding the island are some of the British Isles' richest in terms of fauna and flora.

Then, *\_Le Lyrial\_* will reach the charming port of Kinsale , lying at the mouth of the Bandon estuary. With its narrow streets of colourful façades, its cafes, pubs, galleries and boutiques, Kinsale is one of Ireland's most popular towns and enjoys a reputation as the country's gastronomic capital.

You will then head for the medieval town of Youghal. From the port, you can easily get to the historical Raleigh Quarter , home to St Mary's Collegiate Church and the Clock Gate Tower. Walking along the old ramparts, which are among the best preserved in Ireland, you will be able to admire the views over the bay. An exploration of River Blackwater will reveal splendid country houses, including that of the Jameson sisters, direct descendents of John Jameson whose name is synonymous with Irish Whiskey.

Wild Earth Travel

*Small Ships, Big Adventures*

**0800 945 3327** (within New Zealand) | +64 (0) 3 365 1355 | **1800 107 715** (within Australia)

info@wildearth-travel.com | **wildearth-travel.com**

# Wild Earth Travel

*Small Ships, Big Adventures*

**wildearth-travel.com**

**info@wildearth-travel.com**

Finally, you will head for Warrenpoint, a seaside resort in Northern Ireland set in an exceptional natural environment, which promises beautiful walks in the Silent Valley Mountain Park, before arriving in Dublin, where your cruise will come to an end.



to an end.

## ITINERARY

### Day 1 - Saint-Malo

The mere mention of Saint-Malo's name is enough to plunge us back into the richness of its past. The fortifications stand as testimony to the Malouins' determination to defend their citadel, fought over by France and Britain in turn. When we drop anchor here, immerse yourself in the diversity of its heritage:

the time when privateers sailed the oceans in search of trade and victories; the legendary yacht races the port city is still famous for, such as the Route du Rhum; and the final resting place of the French writer François-René de Chateaubriand, who was born here and chose to be buried here anonymously.

### Day 2 - Guernsey, Channel Islands

Guernsey is an atypical and unforgettable port of call. This Channel Island will delight you with its mild, idyllic climate and its green and floral landscapes. Don't be surprised to come across dolmens and menhirs here and there, testifying to the long history of the island and its rich heritage. The attractive capital of St. Peter Port is characteristic of the delightful British atmosphere that gives the island its charm. The memory of the great writer Victor Hugo is also very present, as he lived for fifteen years in exile in Guernsey. His home, Hauteville House, preserves his memory. The incredible richness of the decoration gives a clear illustration of the creative genius of this great man.

### Day 2 - Herm

A neighbour of Guernsey and the smallest of the Channel Islands, Herm offers escape, tranquillity and authenticity. A green and rocky islet with a population of 60 souls, time seems suspended here, and you will hear only the captivating melody of the Channel swirling against the jagged cliffs, and the colonies of seabirds flying over these preserved lands. Steeped in history and mystery, it also shelters fine expanses of fine sand on which woolly mammoths roamed millions of years ago. Neolithic colonies have been discovered and excavations have revealed evidence of a prehistoric beach.

### Day 3 - Fowey

In mythical Cornwall, at the mouth of the River Fowey, the eponymous town surprises and enchants. Edged with lush valleys, Fowey is ideal for those who love nature and the great outdoors and are looking to escape and relax. The charming little town has many coastal hiking trails. Stroll through its narrow

Wild Earth Travel

*Small Ships, Big Adventures*

**0800 945 3327** (within New Zealand) | +64 (0) 3 365 1355 | **1800 107 715** (within Australia)

info@wildearth-travel.com | **wildearth-travel.com**

# Wild Earth Travel

*Small Ships, Big Adventures*

**wildearth-travel.com**

**info@wildearth-travel.com**

streets of its picturesque old town, which was home to the British novelist and playwright Daphne du Maurier as well as inspiring her work.

stands the Old Head of Kinsale Lighthouse: still in operation today, it has magnificent views over the Atlantic Ocean.

## Day 4 - Isles of Scilly

Nestling in the clear waters of the Atlantic Ocean, at the south west tip of Cornwall, the Isles of Scilly form a small British island chain whose climate, landscapes and lifestyle are unlike any other and seem to have come straight from an Enid Blyton story. Here, everything resembles a tropical paradise. The long sandy beaches run alongside lush green meadows teeming with semi-exotic flowers, whilst the ruins of ancient castles loom from the tops of the hills. Veritable havens of peace that inspired the legendary Avalon of King Arthur, they are today listed as an Area of Outstanding Natural Beauty and the rugged coastline plays host to wildlife that is as varied as it is exceptional, including the very rare Atlantic grey seal.

## Day 7 - Youghal

The historic town of Youghal, in south-west Ireland's County Cork, lies at the mouth of the River Blackwater, which flows into the Irish Sea. A fortified medieval town, Youghal boasts numerous historic buildings inside some of the best-preserved ancient ramparts in Ireland. A stroll through the old town will take you to the 13th-century Saint Mary's Collegiate Church, the 700-year-old Clock Gate Tower and the gardens of Youghal College. Some architectural wonders lie hidden along the banks of the River Blackwater: the country homes of the town's great landowners and distillers.

## Day 5 - Skomer Island, Wales

Skomer is a Welsh island with a unique atmosphere. Lying off the south coast of Pembrokeshire, Skomer is famous as a home to a wide variety of seabirds, and one of the most beautiful natural sites in Wales, with its rugged coastline, spectacular cliffs, sheltered bays and coves, seals and wild flowers. The island, which has not been inhabited since 1950, is now a National Nature Reserve, a Site of Scientific Interest and a Protected Area. It contains traces of human occupation dating back to the Iron Age, with remains of prehistoric houses, burial cairns and menhirs.

## Day 8 - Warrenpoint

On the shores of Carlingford Lough, a fjord marking the eastern end of the border between Ireland and the UK, lies the charming seaside resort of Warrenpoint. Set in stunning natural surroundings and dominated by the Mourne and Cooley peaks, the area is ideal for walking. It is also the starting point for an escape to discover the archaeological site of Fort Navan, also known as Emain Macha, once considered the capital of the Ulster kings. At the Castle Ward, a Victorian tower house, you can gain an insight into the lives of its inhabitants in the 18th century. Or you may prefer to learn about the history of Belfast's water supply at Silent Valley Park.

## Day 6 - Kinsale

Considered Ireland's most beautiful village, Kinsale will captivate you with its sublime natural landscapes and rich cultural heritage. Located at the mouth of the Bandon River in County Cork, this charming little port is home to picturesque streets lined with colourful houses, art galleries and theatres, as well as to a 17th-century fort. Not far away, perched on a rocky promontory,

## Day 9 - Dublin

The Irish capital stretches along the banks of the Liffey to Dublin bay, on the East coast of Ireland. Discover Ireland's warm conviviality in the pedestrian district of Temple Bar. Its cobbled streets are brimming with fabulous shops, pubs and arts centres. Next to Trinity College, famous for its 18th century library, you can stroll along Grafton Street: in one of its famous tea shops, try a delicious scone and clotted cream served hot and melt-in-the-mouth with jam.

Wild Earth Travel

*Small Ships, Big Adventures*

**0800 945 3327** (within New Zealand) | +64 (0) 3 365 1355 | **1800 107 715** (within Australia)

info@wildearth-travel.com | **wildearth-travel.com**



# Wild Earth Travel

*Small Ships, Big Adventures*



**wildearth-travel.com**

**info@wildearth-travel.com**

Not far from here, the majestic O'Connell bridge leads you to the avenue with the same name, on which Spire, a luminous contemporary sculpture presides.

Please note:

Itineraries are subject to change.

**Wild Earth Travel**

*Small Ships, Big Adventures*

**0800 945 3327** (within New Zealand) | +64 (0) 3 365 1355 | **1800 107 715** (within Australia)

info@wildearth-travel.com | **wildearth-travel.com**

# Wild Earth Travel

*Small Ships, Big Adventures*

**wildearth-travel.com**

**info@wildearth-travel.com**

## YOUR SHIP: LE LYRIAL

|                            |                          |
|----------------------------|--------------------------|
| <b>YOUR SHIP:</b>          | <b>Le Lyrial</b>         |
| <b>VESSEL TYPE:</b>        | <b>Luxury Small Ship</b> |
| <b>LENGTH:</b>             | <b>142 metres</b>        |
| <b>PASSENGER CAPACITY:</b> | <b>224</b>               |
| <b>BUILT/REFURBISHED:</b>  |                          |



ide spirit.

Launched: 2015

A sleek silhouette, a welcoming intimate atmosphere, discover aboard this new ship the philosophy that has made our sisterships such a success: the spirit of Yacht Cruises.

Sailing under the French flag, this magnificent yacht of only 122 staterooms and Suites, with balconies, will join our fleet in April 2015. You will be enchanted by the contemporary decor inspired by the our destinations and the blue light of the Vega star in the Lyra constellation. The result is a subtle variation around a palette of blues, ranging from the luminous delicate grey-blue of the Polar ice to splashes of the vivid turquoise blue found in Mediterranean coves

A refined ambiance is enhanced by the quality of the workmanship and materials: white Corian counters in the lobby contrast with the warmth of leather to recall a boat's hull, while the central sculpture of enamelled pieces takes its inspiration from the sea. In the loungebar, the carpet picks up a tennis stripe theme symbolising a certain idea of cruising, one synonymous with French elegance and a chic seaside spirit.

**Wild Earth Travel**

*Small Ships, Big Adventures*

**0800 945 3327** (within New Zealand) | +64 (0) 3 365 1355 | **1800 107 715** (within Australia)

info@wildearth-travel.com | **wildearth-travel.com**

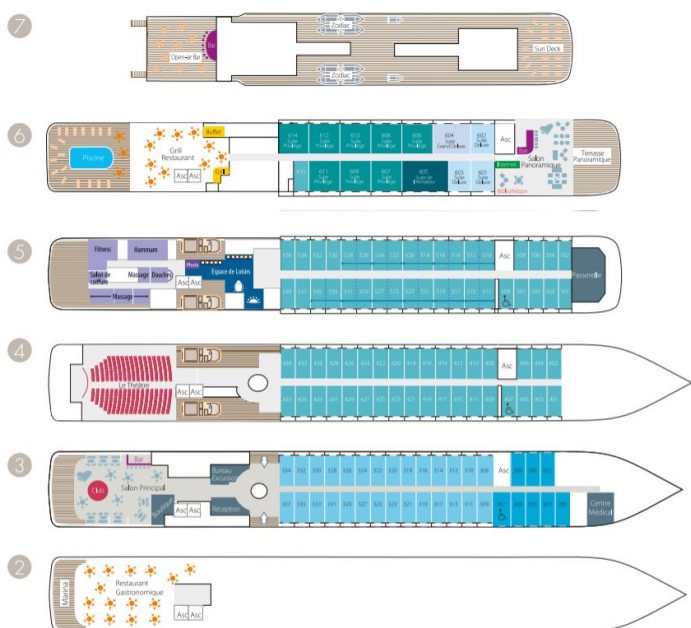
# Wild Earth Travel

*Small Ships, Big Adventures*

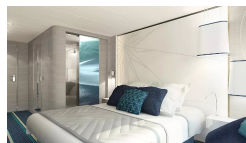
[wildearth-travel.com](http://wildearth-travel.com)

[info@wildearth-travel.com](mailto:info@wildearth-travel.com)

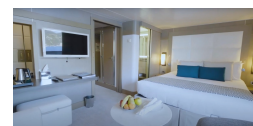
## INSIDE YOUR SHIP



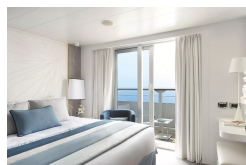
Deluxe Stateroom



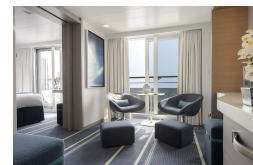
Deluxe Suite



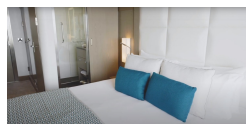
Grand Deluxe Suite



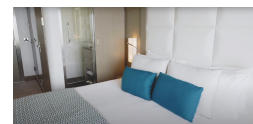
Grand Privilege Suite



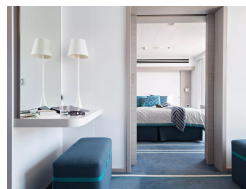
Prestige Deck 4



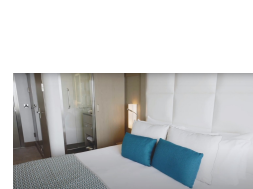
Prestige Deck 5



Prestige Deck 5 Suite



Prestige Deck 6



# Wild Earth Travel

*Small Ships, Big Adventures*

**wildearth-travel.com**

**info@wildearth-travel.com**

## PRICING

**05-May-2026 to 13-May-2026**

|                              |                     |
|------------------------------|---------------------|
| <b>Superior Stateroom</b>    | <b>7830 AUD pp</b>  |
| <b>Deluxe Stateroom</b>      | <b>8450 AUD pp</b>  |
| <b>Prestige Deck 4</b>       | <b>8890 AUD pp</b>  |
| <b>Prestige Deck 5</b>       | <b>9170 AUD pp</b>  |
| <b>Prestige Deck 6</b>       | <b>9510 AUD pp</b>  |
| <b>Deluxe Suite</b>          | <b>12810 AUD pp</b> |
| <b>Prestige Deck 5 Suite</b> | <b>13790 AUD pp</b> |
| <b>Privilège Suite</b>       | <b>14220 AUD pp</b> |
| <b>Grand Deluxe Suite</b>    | <b>14940 AUD pp</b> |
| <b>Grand Privilege Suite</b> | <b>16800 AUD pp</b> |

**Wild Earth Travel**

*Small Ships, Big Adventures*

**0800 945 3327** (within New Zealand) | +64 (0) 3 365 1355 | **1800 107 715** (within Australia)

info@wildearth-travel.com | **wildearth-travel.com**



# Wild Earth Travel

*Small Ships, Big Adventures*



**wildearth-travel.com**

**info@wildearth-travel.com**

## SPECIAL OFFER

Online prices reflect the current brochure fare savings of up to 30%. Prices may change based on demand. Terms and conditions apply. This special offer is subject to availability. Please contact us for more details.



Wild Earth Travel

*Small Ships, Big Adventures*

**0800 945 3327** (within New Zealand) | +64 (0) 3 365 1355 | **1800 107 715** (within Australia)

info@wildearth-travel.com | **wildearth-travel.com**