

# Wild Earth Travel

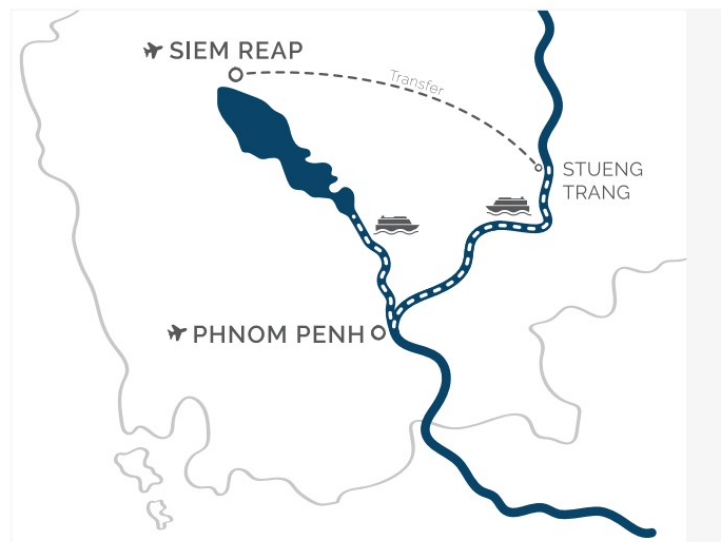
*Small Ships, Big Adventures*

**wildearth-travel.com**

**info@wildearth-travel.com**

## CAMBODIA CRUISE & CYCLE PACKAGE

Experience with this cruise & cycle package a wonderful active exploration of Cambodia, meticulously tailored to please our guests that enjoy riding bicycle to discover new horizons. Begin your adventure in Siem Reap, where you can cycle through Angkor, the grandest ancient temple complex in Asia, which features many of the most important heirlooms of the great Khmer Empire. Despite its global fame, Siem Reap remains a small, charming town, enhanced by renovations during the COVID years, making it both a historic and delightful place to enjoy a few days of serenity. Upon leaving Siem Reap, your journey continues with a Mekong River cruise that takes you through Cambodia's heartland. The Cambodian Mekong and Tonle River regions offer a glimpse into a side of the country rarely experienced by most visitors: that of the real people who live there. Step off the beaten track and explore this unknown terrain with your mountain bike whilst enjoying the comforting luxury accommodations aboard. This week-long cruise and cycling experience, available on selected travel dates, promises a unique and enriching way to explore Cambodia's rich culture and natural beauty.



### ITINERARY

Day 1 - Siem Reap

Wild Earth Travel

*Small Ships, Big Adventures*

**0800 945 3327** (within New Zealand) | +64 (0) 3 365 1355 | **1800 107 715** (within Australia)

info@wildearth-travel.com | **wildearth-travel.com**



# Wild Earth Travel

*Small Ships, Big Adventures*

**wildearth-travel.com**

**info@wildearth-travel.com**

Once arrive in Siem Reap (airport transfer included), you can hide away at your luxurious retreat the Jaya House River Park. The first day is free at leisure and you can explore the town on your own. The Jaya House River Park is centrally located from where you will be able to get to anywhere in town easily. Enjoy the wonderful amenities at this beautiful hotel and opt for a complimentary spa. Dining: - Check-in time is 14:00 (early check-in is complimentary, subject to room availability).

## Day 2 - Siem Reap Countryside

Set off on a picturesque adventure this morning after your relaxed breakfast. Discover the rural outskirts of Siem Reap and its countryside vibes, where red soil roads weave through vibrant rice paddies and tranquil forests. The pedaling starts straight from the hotel from where it just takes a few minutes to leave the morning puzzle behind (escort vehicle included). A great way to kick off the local exploration is with a second breakfast at a local market where friendly Khmer ladies serve most delicious local snacks such as crispy fried banana or sweet coconut sticky rice balls. With the body sugar levels up and running, we continue the cycling stopping next at a beautiful Buddhist pagoda. Buddhism is a fascinating religion which can be best understood out of first hand: Enjoy a private blessing from a local monk bathing you with wishes of health and happiness. On the way back, Cambodia presents itself again in all trooping colours including local ox carts, lush rice fields, traditional wooden houses, playing children, and smiling inhabitants. Distance: 10 km | Terrain: Flat | Level: Moderate Design the afternoon under your own slow travel preferences. Dining: B

## Day 3 - Angkor Wat

Get ready for another highlight of your Siem Reap stay. This morning head for an unforgettable cycling journey to and through the Angkor Wat area, one of the world's modern wonders. Pedal along peaceful, tree-lined roads and through a vast forest, where the tranquil surroundings are perfect for a leisurely ride. Upon reaching the temple, explore the intricately carved hallways

adorned with hundreds of detailed Apsara figures and scenes from Hindu mythology. Discover well-preserved shrines still cherished by locals, and be awed by the immense scale of the temple complex, offering a glimpse into the grandeur of the Khmer Empire from the 11th to 13th centuries. After circling the impressive site, you return to base having completed a 14 km journey of pure historic beauty. The rest of the day is to explore the enchanting city of Siem Reap at your leisure. Dining: B Distance: 14 km | Terrain: Flat | Level: Moderate

## Day 4 - Wat Hanchey

Get ready for your luxury cycling cruise. After breakfast, you'll check out and embark on your Mekong cruise adventure. Once you've settled around noontime, lunch is served on board. Our adventure kicks off with a tuk-tuk ride to the hilltop of Wat Hanchey, where we explore the charming temple complex and take in the view down to the river. Afterward, we paddle our way on peaceful roads through the Cambodian countryside and stop at a cashew nut farm along the way. A cocktail awaits at the end giving us a moment to recap our active achievement. As the ship sails into the sunset towards Angkor Ban for overnight mooring, you enjoy canapes and prosecco on your first day on the river. Dining: B, L, D Distance: 16 km | Terrain: Flat | Level: Moderate

## Day 5 - Angkor Ban

Start your day with a serene Tai Chi session, then embark on a cultural exploration of Angkor Ban. Visit a local monastery to observe monks during their morning rituals and engage with villagers for an authentic glimpse into their daily lives. As you cycle through verdant seasonal vegetable fields, picturesque old local houses dot the landscape, reflecting Cambodia's heritage. Witness skilled blacksmiths at work to understand more about traditional craftsmanship. Conclude your morning adventure with a delightful pause, sipping on ice-cold local beer or freshly pressed sugar cane juice. Once back on board, take your time to relax and enjoy lunch, recharging for the afternoon adventure ahead. In the afternoon, we'll head over to the wonderful former royal palace of "Lavea Em" (1601-1618). Pedal at ease through beautiful landscapes, punctuated by captivating stops at historic pagodas, silk weaving workshops, and local markets. To top it all off, we'll enjoy a delightful tea break at the residence of H.E. Sam-El, adding a touch of elegance to your

Wild Earth Travel

*Small Ships, Big Adventures*

**0800 945 3327** (within New Zealand) | +64 (0) 3 365 1355 | **1800 107 715** (within Australia)

info@wildearth-travel.com | **wildearth-travel.com**



# Wild Earth Travel

*Small Ships, Big Adventures*

**wildearth-travel.com**

**info@wildearth-travel.com**

cycling adventure. The day concludes with a joyous evening sail, featuring dinner and a movie screening as the ship makes its way into the Tonle River to throw anchor near our next day's destination. Dining: B, L, D Distance: 24 km | Terrain: Flat | Level: Moderate

## Day 6 - Kampong Laeang

In the morning, embark on an excursion to Kampong Laeang, situated across from the pottery town of Kampong Chhnang. Hop on our bikes and ride through rice paddy fields and quaint villages, where small businesses produce pottery or palm sugar. The flat terrain and mesmerizing rural landscapes make for an easy, laid-back ride, giving us a captivating look at local life unfolding before our eyes. After a relaxing lunch onboard, the ship sets sail for Kampong Tralach. Here, we can pedal through captivating landscapes, encountering treasures like the former royal palace of 'Lungvek' and the venerable Buddha Jade Temple (1560). As we ride, we'll be immersed in the slow, timeless rhythms of local life--passing by fishermen skilfully casting their nets into the serene waters of the Tonle River. After your day out in the countryside it is time to enjoy a cold drink on the sun deck as the ship approaches Phnom Penh offering some amazing views of the city skyline. Dining: B, L, D

## Day 7 - Phnom Penh

Phnom Penh, once celebrated as the "Paris of the East", is your today's highlight to discover. Begin with an unhurried cyclo ride to see and feel the special vibes of this city. Visit the majestic Royal Palace, home to opulent Khmer architecture, and the Silver Pagoda, renowned for its stunning floor of silver tiles and precious artifacts. Explore the "S21" prison, a poignant site from the Khmer Rouge era, offering a sobering glimpse into Cambodia's recent history. After lunch in a local restaurant in town, continue your exploration at the Sosoro Museum, which provides deeper insights into Cambodian heritage. We continue to wander through the charming French Quarter, characterised by its colonial-era architecture, and conclude the tour at the iconic Wat Phnom, a historic temple perched on a hill and the namesake of Cambodia's capital. Back on board, there is time to refresh and relax before meeting our expert lecture on Cambodian traditions. Your final night aboard beholds a special open-air barbecue gala dinner accompanied by a mesmerising Apsara dance performance. Feel free to head out again afterward to explore Phnom Penh's

vibrant nightlife on your own. Dining: B, L, D

## Day 8 - Phnom Penh

We hope you enjoyed your cruise and cycling adventure with Heritage Line. Enjoy your final breakfast leisurely, savouring the last moments of your unforgettable journey. After saying goodbye to Phnom Penh, we transfer you to the airport or your desired destination in the city and wish you a wonderful onward journey. Dining: B

### Please note:

Itineraries are subject to change.

**Wild Earth Travel**

*Small Ships, Big Adventures*

**0800 945 3327** (within New Zealand) | +64 (0) 3 365 1355 | **1800 107 715** (within Australia)

info@wildearth-travel.com | **wildearth-travel.com**





# Wild Earth Travel

*Small Ships, Big Adventures*

**wildearth-travel.com**

**info@wildearth-travel.com**

## YOUR SHIP: THE JAHAN

<b>YOUR SHIP:</b>	<b>The Jahan</b>
<b>VESSEL TYPE:</b>	<b>River Boat</b>
<b>LENGTH:</b>	<b>70 metres</b>
<b>PASSENGER CAPACITY:</b>	<b>48 (in 24 cabins)</b>
<b>BUILT/REFURBISHED:</b>	<b>2011</b>

Plying the slow, swirling waters of the Mekong, The Jahan is Heritage Line's most romantic cruise liner. Considered the brother of The Jayavarman in Heritage Line's "family" of cruise ships, this magnificent vessel was named after the Indian emperor Shah Jahan, who ruled the Mughal Empire from 1628 to 1658. A great patron of architecture and the arts, Shah Jahan oversaw the construction of many legendary sites, including India's dazzling Red Fort, and the famed 777 gardens of Kashmir. This cultured monarch is a fitting namesake for The Jahan, which evokes the opulent vessels of British India. No expense has been spared in the interior or exterior decorations, which showcase the talents of local woodworkers, weavers and artists.

When guests aren't relaxing in their luxurious cabins they can meet friends in the atmospheric East India Club; soak in the Jacuzzi on the Pool Deck; challenge a new friend to a game of chess in the Observatory Lounge; or enjoy a pampering massage in the Apsara Spa. With three decks, this vessel offers all the amenities of a fine resort, including comfortable in- and outdoor lounges, an outdoor bar, a small boutique, dining room, fitness equipment and a steam room, as well as an excellent spa.

Stretching 70 meters/230 feet from bow to stern, The Jahan features 26 beautifully-designed cabins on two decks, each with its own private balcony.

Discover the bygone elegance of travel aboard the majestic Jahan. Just as Indian art and architecture influenced the Khmer and Cham cultures in the Mekong Delta, the stunning artistry of The Jahan will inspire you, as will the delta's vibrant beauty.

### THE RAJ OF INDIA

The boutique British-Indian lobby lounge is the perfect place to kick-back and grab a magazine from our library. WiFi is available as well. The tranquil atmosphere with white, creme and golden tones, wide sofas, comfy chairs, Indian lamps and the Old England styled reception are a throwback to the days of Colonial India.

### VICEROY DINING HALL

The Jahan's elegant Viceroy Dining Hall is located next to the bar on the Terrace Deck and offers al-fresco dining with free style seating. Ascetically designed, the Viceroy Hall is day light flooded with many high windows. The hall in azure side walls, white ceiling with golden borders and elegant finished chairs and tables shows its full royal shine in the evening when British styled luster bathes the room in decent light.

### EAST INDIA CLUB

The East India Club is an open funnel bar and lounge which recreates a British-India feel with camel bone in-lays and a unique oriental lamp, replete with Sanskrit carvings, hanging down the middle of the bar. The East India Club is the perfect place to unwind and quaff a drink whilst savoring the splendors of the setting sun.

**Wild Earth Travel**

*Small Ships, Big Adventures*

**0800 945 3327** (within New Zealand) | +64 (0) 3 365 1355 | **1800 107 715** (within Australia)

info@wildearth-travel.com | **wildearth-travel.com**

# Wild Earth Travel

*Small Ships, Big Adventures*

**wildearth-travel.com**

**info@wildearth-travel.com**

## OBSERVATORY

The Observatory is an elegant, tasteful and welcoming Indian lounge with wide cozy styled diwans. It is the ideal place to "observe" life on the Mekong through the panoramic windows. Play the antique chess game or simply relax after spa whilst munching on some fruit snacks. The Observatory is also used for private functions - candle light dinners.

## APSARA SPA

Enjoy exquisite romance and privacy as the Apsara Spa has two treatment rooms. With more than 20 different aroma oils to choose from as well as a variety of fine treatments, our packages are guaranteed to keep you coming back for more.

## POOL DECK

The large pool - constructed with intricate Turkish Mosaic floor tiles is an oasis to refresh. Soak in the rays of the sun on restful sun beds. Then, jump into our splendid Jacuzzi and allow the bubbles to caress you.

## GYM AND STEAM BATH

Burn away all those extra calories at our gym and steam bath. The bath is a marvelous way to relax with your partner in steamy privacy.



my privacy.

Wild Earth Travel

*Small Ships, Big Adventures*

**0800 945 3327** (within New Zealand) | +64 (0) 3 365 1355 | **1800 107 715** (within Australia)

info@wildearth-travel.com | **wildearth-travel.com**



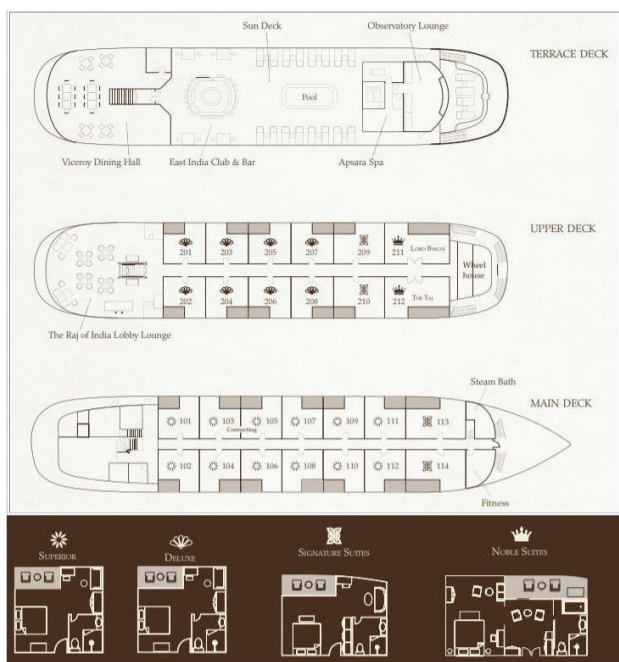
# Wild Earth Travel

*Small Ships, Big Adventures*

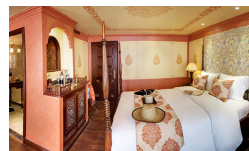
[wildearth-travel.com](http://wildearth-travel.com)

[info@wildearth-travel.com](mailto:info@wildearth-travel.com)

## INSIDE YOUR SHIP



### DELUXE STATEROOM



### SUPERIOR STATEROOM



Wild Earth Travel

*Small Ships, Big Adventures*

0800 945 3327 (within New Zealand) | +64 (0) 3 365 1355 | 1800 107 715 (within Australia)

[info@wildearth-travel.com](mailto:info@wildearth-travel.com) | [wildearth-travel.com](http://wildearth-travel.com)

# Wild Earth Travel

*Small Ships, Big Adventures*

**wildearth-travel.com**

**info@wildearth-travel.com**

## PRICING

### 13-Aug-2025 to 20-Aug-2025

SUPERIOR STATEROOM	2650 USD pp
DELUXE STATEROOM	3100 USD pp

### 27-Aug-2025 to 03-Sep-2025

SUPERIOR STATEROOM	2650 USD pp
DELUXE STATEROOM	3100 USD pp

### 10-Sep-2025 to 17-Sep-2025

SUPERIOR STATEROOM	2650 USD pp
DELUXE STATEROOM	3100 USD pp

### 24-Sep-2025 to 01-Oct-2025

SUPERIOR STATEROOM	2650 USD pp
DELUXE STATEROOM	3100 USD pp

### 08-Oct-2025 to 15-Oct-2025

SUPERIOR STATEROOM	3660 USD pp
DELUXE STATEROOM	4110 USD pp

### 22-Oct-2025 to 29-Oct-2025

SUPERIOR STATEROOM	3660 USD pp
DELUXE STATEROOM	4110 USD pp

### 19-Nov-2025 to 26-Nov-2025

SUPERIOR STATEROOM	3660 USD pp
DELUXE STATEROOM	4110 USD pp

### 03-Dec-2025 to 10-Dec-2025

SUPERIOR STATEROOM	3660 USD pp
DELUXE STATEROOM	4110 USD pp

### 31-Dec-2025 to 07-Jan-2026

SUPERIOR STATEROOM	3660 USD pp
DELUXE STATEROOM	4110 USD pp

### 11-Mar-2026 to 18-Mar-2026

SUPERIOR STATEROOM	3660 USD pp
DELUXE STATEROOM	4110 USD pp

### 25-Mar-2026 to 01-Apr-2026

SUPERIOR STATEROOM	3660 USD pp
DELUXE STATEROOM	4110 USD pp

### 08-Apr-2026 to 15-Apr-2026

SUPERIOR STATEROOM	3660 USD pp
DELUXE STATEROOM	4110 USD pp

### 29-Jul-2026 to 05-Aug-2026

SUPERIOR STATEROOM	2650 USD pp
DELUXE STATEROOM	3100 USD pp

### 12-Aug-2026 to 19-Aug-2026

SUPERIOR STATEROOM	2650 USD pp
DELUXE STATEROOM	3100 USD pp

### 26-Aug-2026 to 02-Sep-2026

SUPERIOR STATEROOM	2650 USD pp
DELUXE STATEROOM	3100 USD pp

# Wild Earth Travel

*Small Ships, Big Adventures*

**wildearth-travel.com**

**info@wildearth-travel.com**

## 09-Sep-2026 to 16-Sep-2026

<b>SUPERIOR STATEROOM</b>	<b>2650 USD pp</b>
<b>DELUXE STATEROOM</b>	<b>3100 USD pp</b>

## 23-Sep-2026 to 30-Sep-2026

<b>SUPERIOR STATEROOM</b>	<b>2650 USD pp</b>
<b>DELUXE STATEROOM</b>	<b>3100 USD pp</b>

## 07-Oct-2026 to 14-Oct-2026

<b>SUPERIOR STATEROOM</b>	<b>3660 USD pp</b>
<b>DELUXE STATEROOM</b>	<b>4110 USD pp</b>

**Wild Earth Travel**

*Small Ships, Big Adventures*

**0800 945 3327** (within New Zealand) | +64 (0) 3 365 1355 | **1800 107 715** (within Australia)

info@wildearth-travel.com | wildearth-travel.com





## PRICING

21-Oct-2026 to 28-Oct-2026

SUPERIOR STATEROOM	3660 USD pp
DELUXE STATEROOM	4110 USD pp

18-Nov-2026 to 25-Nov-2026

SUPERIOR STATEROOM	3660 USD pp
DELUXE STATEROOM	4110 USD pp

02-Dec-2026 to 09-Dec-2026

SUPERIOR STATEROOM	3660 USD pp
DELUXE STATEROOM	4110 USD pp