



Wild Earth Travel

Small Ships, Big Adventures

wildearth-travel.com

info@wildearth-travel.com

EUROPEAN AUTUMN IN THE AEGEAN SEA - GREEK ISLANDS LUXURY CRUISE

From Athens, set sail for an 8-day cruise in the heart of Greece. From the Thessaly region to the Peloponnese via Macedonia, discover ports nestling in gulfs, unspoiled islands, and ancient monasteries that seem to be hanging from the sky. From the sheer coastlines bordered by paradisiacal turquoise waters to the archaeological sites that are as emblematic as they are monumental, let yourself fall under the spell of these jewels of the Aegean Sea.

Throughout your journey, you will benefit from an excursion included per person per port of call, to choose from a selection offered by PONANT. On this cruise, discover the royal tombs of Vergina in Thessaloniki, visit the Meteora monasteries from Volos, or wander through the remains of the fortified city of Philippi, a UNESCO World Heritage Site. The diversity of experiences on offer promises you intense and varied moments (to discover the full range of excursions, go to the itinerary tab). The diversity of experiences on offer promises you intense and varied moments (to discover the full range of excursions, go to the itinerary tab).

Discover the charming and verdant island of Skiathos, its beaches, its hiking trails, and its lovely port where some of the scenes in Mamma Mia! were filmed. You will then sail to the port of Volos, nestling in the curve of the Pagasetic Gulf. From there, access Meteora, home to a complex of Orthodox Christian monasteries that blend into the rock and are seemingly suspended in the sky.

Your ship will set a course for Thessaloniki, a big city that is pleasant to wander through and bears the traces of several peoples and civilisations. Your ship will then sail along Mount Athos, a rocky peninsula to which cling twenty imposing monasteries surrounded by superb forests of chestnut trees.

Kavala, a medieval city home to a magnificent aqueduct, marks the spot where East meets West. Inland, the Philippi site is a must-see. Your ship will then take you to the capital of Limnos, Myrina, whose Venetian castle, built on a rocky outcrop, overlooks the sandy shore. From the port, follow the long shopping street lined with houses and shops with small gardens characteristic of the Thracian style.

Athens, the mythical city dominated by the Acropolis and its monuments, which form the most extraordinary architectural and artistic ensemble bequeathed to the world by Ancient Greece, will mark the end of this exceptional odyssey.

Wild Earth Travel

Small Ships, Big Adventures

0800 945 3327 (within New Zealand) | +64 (0) 3 365 1355 | **1800 107 715** (within Australia)

info@wildearth-travel.com | **wildearth-travel.com**

Wild Earth Travel

Small Ships, Big Adventures

wildearth-travel.com

info@wildearth-travel.com



The small island of Skiathos is one of the treasures of the Aegean Sea, particularly appreciated for its magnificent beaches with turquoise waters, and also famous as one of the sites where the film *Mamma Mia!* was shot. You will immediately fall under the charm of the main town, Skiathos, with its white houses, narrow streets and typical restaurants. You will have the possibility of discovering the former house of the famous novelist and poet Alexandros Papadiamantis, now a museum, as well as the Monastery of the Annunciation, commonly known as the Evangelistria Monastery, a post-Byzantine jewel with magnificent wall paintings. The many hiking trails will take you from coves to shady forests in an idyllic Mediterranean setting.

Day 3 VOLOS

Volos, one of the biggest port cities in Greece, is located at the foot of Mount Pelion. According to mythology, Mount Pelion was a place of celebration for gods and heroes, and the home of the centaurs. The beauty of the place and the magical atmosphere that reigns here can indeed only have been inspired by the gods: the clear water that flows from a multitude of sources bathes the plane trees, apple trees, oaks, beech trees, gardenias, camellias, and hydrangeas that thrive in the fertile soil of Thessaly. Do not miss your chance to visit picturesque village of Milies in the hills, and to discover its traditional architecture.

Day 4 THESSALONIKI

Thessaloniki, Greece's second city after Athens, is in the Macedonia region, on the shores of the Aegean Sea. Visiting its historic centre means exploring the entire history of ancient civilisations and peoples: Roman, Greek, Ottoman, Jewish, Byzantine, and so on. Cultures have come together and left their mark on many monuments in the city and in its architecture. No fewer than 15 monuments are on the UNESCO World Heritage list, such as the magnificent Byzantine church, the Hagia Sophia, with its splendid 8th-12-century mosaics. Thessaloniki is also a modern and lively city, animated during the day as well as at night, with its many seafront bars and its markets.

al odyssey.

ITINERARY

Day 1 ATHENS

The Greek capital city is located on the edge of the Saronic gulf, in the east of the country. It bears a plural name in reference to the first villages that surround the Acropolis. You will be enchanted by the rocky plateau presided by its monuments listed as UNESCO World Heritage. In the city below, you can visit some of the liveliest districts in Athens: Plaka, with its maze of colourful streets, and where, in the evenings the drifting aroma of moussaka and garlic prawns will tickle your taste buds. The National Archaeological museum and the Cycladic Art Museum are also some of the city's key attractions and allow visitors to discover Athens' cultural past.

Day 2 SKIATHOS

Wild Earth Travel

Small Ships, Big Adventures

0800 945 3327 (within New Zealand) | +64 (0) 3 365 1355 | 1800 107 715 (within Australia)

info@wildearth-travel.com | wildearth-travel.com



Wild Earth Travel

Small Ships, Big Adventures

wildearth-travel.com

info@wildearth-travel.com

Day 5 SAILING ALONG MOUNT ATHOS & KAVALA

Mount Athos, a peninsula measuring 50 km (31 miles) long and 12 km (7 miles) wide and which rises to an altitude of 2,030 metres (6,660 feet), is also called "Holy Mountain" because of the twenty or so orthodox monasteries and the 2,000 monks that it shelters. It was added to the UNESCO World Heritage list in 1988 thanks to its long religious history, the well-maintained agrarian architecture of the monasteries and the preservation of the flora and fauna around the mountain. Sailing around the peninsula, you will admire the majestic monasteries clinging to the rock face and overlooking the Aegean Sea.

Lying in north-east Greece, between East and West, Kavala has many treasures to offer, starting with a majestic fortress overlooking the Aegean Sea, while historical and architectural wonders lie hidden everywhere in the old town. You will have a chance to explore the archaeological site of Philippi, a fortified city founded in the 4th century BC, now a UNESCO World Heritage Site. A real journey back in time, where Greeks, Romans and early Christians have all left visible marks. Known as the "Blue City", Chania is also one of Macedonia's most important ports, with delicious seafood restaurants all along its marina.

Day 6 LIMNOS ISLAND

A volcanic island located near the Dardanelles Strait, Limnos was venerated during Antiquity. Legend has it that Hephaestus, the god of fire, had his forge here. Now one of Greece's major seaside resorts, Lemnos offers its visitors many superb sandy beaches. It is also home to several archaeological sites, such as the towers of Kastro, an ancient acropolis fortified by the Venetians, or the neolithic site of Poliochni and the city of Hephaestia. Renowned for its olives, fruits, wheat and honey, and for the authenticity of its inhabitants, Lemnos is also known for the quality of its restaurants, ideal for tasting typical Greek dishes.

Day 7 HYDRA

This unusual gem belonging to the Saronic islands is located to the east of the Peloponnese. There are no cars here. Named after the island, the harbour town is layered up the slopes of a mountainous bay. You may be surprised to see beautiful stone mansions. These are traditional here, as are the multi-coloured caiques along the quays. Further along the shore, you will discover the Historical Archives Museum. Collections from Athens National History Museum are exhibited in the elegant villa Koundouriotis.

Day 8 ATHENS

The Greek capital city is located on the edge of the Saronic gulf, in the east of the country. It bears a plural name in reference to the first villages that surround the Acropolis. You will be enchanted by the rocky plateau presided by its monuments listed as UNESCO World Heritage. In the city below, you can visit some of the liveliest districts in Athens: Plaka, with its maze of colourful streets, and where, in the evenings the drifting aroma of moussaka and garlic prawns will tickle your taste buds. The National Archaeological museum and the Cycladic Art Museum are also some of the city's key attractions and allow visitors to discover Athens' cultural past.

Please note:

Itineraries are subject to change.

Wild Earth Travel
Small Ships, Big Adventures

0800 945 3327 (within New Zealand) | +64 (0) 3 365 1355 | **1800 107 715** (within Australia)

info@wildearth-travel.com | **wildearth-travel.com**



Wild Earth Travel

Small Ships, Big Adventures

wildearth-travel.com

info@wildearth-travel.com

YOUR SHIP: LE BOUGAINVILLE

YOUR SHIP: Le Bougainville

VESSEL TYPE: Luxury

LENGTH:

PASSENGER CAPACITY: 92 cabins

BUILT/REFURBISHED: 2017/2018

Featuring innovative and environmentally-friendly equipment, elegantly designed cabins, spacious suites with large windows, and lounge areas that open onto the outside, this new limited-capacity yacht boasting just 92 cabins and suites will offer you a truly unique cruising experience.

As the first ship in a new series that remains true to the Ponant spirit, Le Bougainville will embody the unique atmosphere that is the cruise line's hallmark: a subtle blend of refinement, intimacy and comfort.

Aboard this ship that flies the French flag, you will experience the incomparable pleasure of an intimate cruise, with the possibility of exploring an ever-increasing range of destinations in an ethnic-chic ambiance with luxury service.

Experience a luxurious setting where the accent is on authenticity and passion for travel.

RESTAURANTS

As it is an essential part of French culture, gastronomy will naturally have pride of place aboard this new ship. Through its two restaurants, Le Bougainville will invite you on a journey to elegance and epicureanism.

In a relaxed atmosphere, a first dining area located on Deck 3

and able to seat 70 will serve grilled meats daily, along with a variety of salads and desserts.

To the back of Deck 4, you will find a 260 m² panoramic restaurant which can accommodate all of our passengers in a single sitting. Designed differently to that on our other ships, this dining area, which opens onto the outside, will have a buffet of salads, desserts and cheeses at your disposal. Our discreet and attentive crew will provide table service for hot meals.

PUBLIC AREAS

Like Le Boreal and its sisterships, Le Bougainville has many common areas that are designed and equipped to meet all of your needs while preserving the intimacy of each passenger.

A 140 m² reception area includes:

A reception/concierge desk, An excursions desk, The ship's administrative services, The sales office, manned by our Guest Relations Officer, Our 50 m² boutique which sells clothing, jewellery, beauty products, postcards and various accessories, Toilets accessible to passengers with reduced mobility.

A new hydraulic platform with adjustable height provides: Easier boarding than on any other cruise ship, Easier Zodiac embarkation and disembarkation for expeditions, Easier access to the sea for swimming and practising various water sports such as kayaking or paddle-boarding.

A pool deck offering: A pool with a panoramic view, equipped with a counter-current swimming system, A pleasant solarium, An outdoor bar and lounge with armchairs and sofas.

A 200 m² main lounge which can accommodate all of our passengers to share convivial moments and to host activities organised during the day or evening.

Wild Earth Travel

Small Ships, Big Adventures

0800 945 3327 (within New Zealand) | +64 (0) 3 365 1355 | **1800 107 715** (within Australia)

info@wildearth-travel.com | **wildearth-travel.com**

Wild Earth Travel

Small Ships, Big Adventures

wildearth-travel.com

info@wildearth-travel.com

Lastly, a theatre that seats 188, equipped with: The latest sound and lighting technology, A LED wall as the stage backdrop, for the projection of high-resolution images and videos.



and videos.

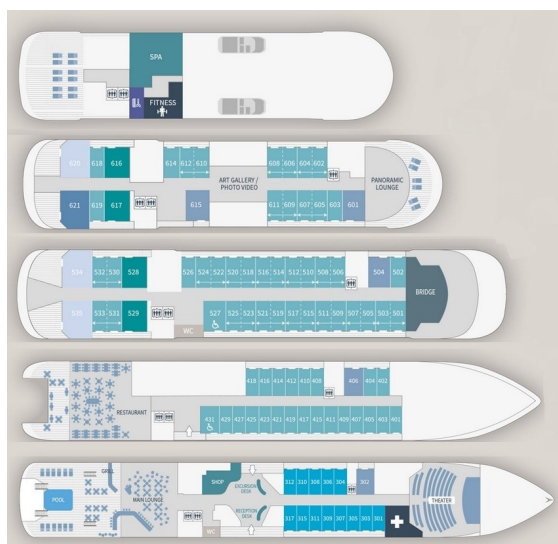
Wild Earth Travel

Small Ships, Big Adventures

0800 945 3327 (within New Zealand) | +64 (0) 3 365 1355 | **1800 107 715** (within Australia)

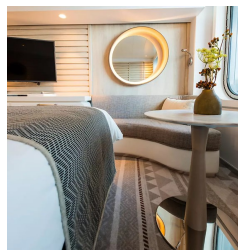
info@wildearth-travel.com | **wildearth-travel.com**

INSIDE YOUR SHIP

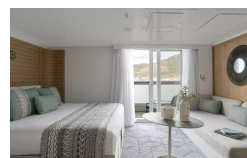


- Owner's Suite Deck 6
- Privilege Suites Deck 5-6
- Grand Deluxe Suites Deck 5-6
- Prestige Suites Deck 5-6
- Deluxe Suites Deck 5-6
- Prestige Cabins Deck 4-5-6
- Deluxe Cabins Deck 3

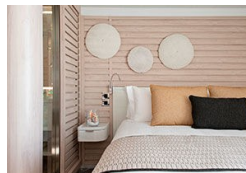
Deluxe Stateroom



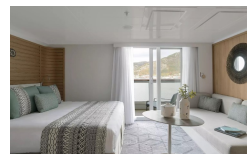
Deluxe Suite



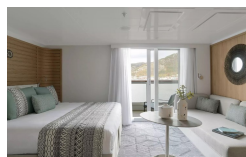
Deluxe Suite Deck 3



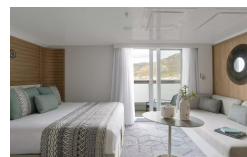
Deluxe Suite Deck 4



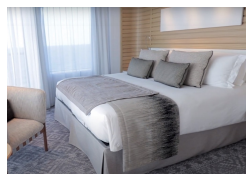
Deluxe Suite Deck 5



Deluxe Suite Deck 6



Grand Deluxe Suite



Grand Deluxe Suite Deck 5





Wild Earth Travel

Small Ships, Big Adventures

wildearth-travel.com

info@wildearth-travel.com

PRICING

28-Sep-2025 to 05-Oct-2025

Deluxe Stateroom	9030 AUD pp
Prestige Stateroom Deck 4	9510 AUD pp
Prestige Stateroom Deck 5	9990 AUD pp
Prestige Stateroom Deck 6	10570 AUD pp
Deluxe Suite Deck 4	17160 AUD pp
Deluxe Suite Deck 5	17160 AUD pp
Deluxe Suite Deck 6	17160 AUD pp
Deluxe Suite	17160 AUD pp
Prestige Suite Deck 5	19060 AUD pp
Prestige Suite Deck 6	19540 AUD pp
Privilege Suite Deck 6	20500 AUD pp
Privilege Suite	20500 AUD pp
Grand Deluxe Suite	24790 AUD pp
Owner's Suite	24790 AUD pp
Grand Deluxe Suite Deck 6	24790 AUD pp

24-Oct-2025 to 31-Oct-2025

Deluxe Stateroom	8600 AUD pp
Prestige Stateroom Deck 4	9060 AUD pp
Prestige Stateroom Deck 5	9510 AUD pp
Prestige Stateroom Deck 6	10060 AUD pp
Deluxe Suite Deck 6	16320 AUD pp
Deluxe Suite Deck 4	16320 AUD pp
Deluxe Suite Deck 5	16320 AUD pp
Deluxe Suite	16320 AUD pp
Prestige Suite Deck 5	18130 AUD pp
Prestige Suite Deck 6	18580 AUD pp
Privilege Suite	19500 AUD pp
Privilege Suite Deck 6	19500 AUD pp
Grand Deluxe Suite	23570 AUD pp
Grand Deluxe Suite Deck 6	23570 AUD pp
Owner's Suite	24270 AUD pp



Wild Earth Travel
Small Ships, Big Adventures

0800 945 3327 (within New Zealand) | +64 (0) 3 365 1355 | **1800 107 715** (within Australia)

info@wildearth-travel.com | wildearth-travel.com



Wild Earth Travel

Small Ships, Big Adventures

wildearth-travel.com

info@wildearth-travel.com

PRICING

25-Oct-2025 to 01-Nov-2025

Deluxe Stateroom	7320 AUD pp
Prestige Deck 4	7710 AUD pp
Prestige Deck 5	8090 AUD pp
Prestige Deck 6	8560 AUD pp
Deluxe Suite Deck 5	13830 AUD pp
Deluxe Suite Deck 4	13830 AUD pp
Deluxe Suite Deck 3	13830 AUD pp
Deluxe Suite Deck 6	13830 AUD pp
Prestige Deck 5 Suite	15350 AUD pp
Prestige Deck 6 Suite	15730 AUD pp
Privilege Suite Deck 5	16500 AUD pp
Privilege Suite Deck 6	16500 AUD pp
Grand Deluxe Suite Deck 6	19930 AUD pp
Grand Deluxe Suite Deck 5	19930 AUD pp

01-Nov-2025 to 08-Nov-2025

Deluxe Stateroom	6470 AUD pp
Prestige Deck 4	6810 AUD pp
Prestige Deck 5	7140 AUD pp
Prestige Deck 6	7550 AUD pp
Deluxe Suite Deck 4	12160 AUD pp
Deluxe Suite Deck 5	12160 AUD pp
Deluxe Suite Deck 3	12160 AUD pp
Deluxe Suite Deck 6	12160 AUD pp
Prestige Deck 5 Suite	13490 AUD pp
Prestige Deck 6 Suite	13830 AUD pp
Privilege Suite Deck 5	14500 AUD pp
Privilege Suite Deck 6	14500 AUD pp
Grand Deluxe Suite Deck 6	17500 AUD pp
Grand Deluxe Suite Deck 5	17500 AUD pp



Wild Earth Travel
Small Ships, Big Adventures

0800 945 3327 (within New Zealand) | +64 (0) 3 365 1355 | **1800 107 715** (within Australia)

info@wildearth-travel.com | wildearth-travel.com



Wild Earth Travel

Small Ships, Big Adventures

wildearth-travel.com

info@wildearth-travel.com

PRICING

01-Nov-2026 to 08-Nov-2026

Deluxe Stateroom	6790 AUD pp
Prestige Deck 4	7140 AUD pp
Prestige Deck 5	7490 AUD pp
Prestige Deck 6	7920 AUD pp
Deluxe Suite Deck 4	12760 AUD pp
Deluxe Suite Deck 5	12760 AUD pp
Deluxe Suite Deck 6	12760 AUD pp
Deluxe Suite Deck 3	12760 AUD pp
Prestige Deck 5 Suite	14170 AUD pp
Prestige Deck 6 Suite	14520 AUD pp
Privilege Suite Deck 5	15220 AUD pp
Privilege Suite Deck 6	15220 AUD pp
Grand Deluxe Suite Deck 5	18380 AUD pp
Grand Deluxe Suite Deck 6	18380 AUD pp

ADDITIONAL CHARGES:

Port Taxes 520 AUD pp



Wild Earth Travel
Small Ships, Big Adventures

0800 945 3327 (within New Zealand) | +64 (0) 3 365 1355 | **1800 107 715** (within Australia)

info@wildearth-travel.com | **wildearth-travel.com**



Wild Earth Travel

Small Ships, Big Adventures

wildearth-travel.com

info@wildearth-travel.com

SPECIAL OFFERS

Online prices reflect the current brochure fare savings of up to 30%. Prices may change based on demand. Terms and conditions apply. This special offer is subject to availability. Please contact us for more details.

Wild Earth Travel

Small Ships, Big Adventures

0800 945 3327 (within New Zealand) | +64 (0) 3 365 1355 | **1800 107 715** (within Australia)

info@wildearth-travel.com | **wildearth-travel.com**