



# Wild Earth Travel

*Small Ships, Big Adventures*

**wildearth-travel.com**

**info@wildearth-travel.com**

## EXPEDITION ALONG SAINT LAWRENCE - EAST COAST CANADA LUXURY CRUISE

The river that turns into an ocean, sublime scenery inhabited by wild fauna, the echo of history that reverberates on the bend of a shore, during an all-new expedition cruise, PONANT invites you to sail up the Saint Lawrence aboard Le Lyrial. During 12 unforgettable days, the woody aromas of forests will embellish the panoramas of this unique region in the world.

Your journey starts in the heart of the peaceful Saint Pierre and Miquelon archipelago. In these distant lands, the hilly horizon is dotted with ponds, the forest blends with the peat bogs, and the coastlines alternate between lagoons and sheer cliffs. During a hike, attempt to get a glimpse of the wildlife that is found here, including white-tailed deer.

It is time to reach the shores of Nova Scotia and the Magdalen Islands and their exceptional landscapes, between the white sandy beaches and the red sculpted cliffs. Cap-aux-Meules, also known as Grindstone, will captivate you as much with its surrounding nature as with the hospitality of its inhabitants.

Newfoundland will welcome you in the heart of the Gros-Morne National Park, a UNESCO World Heritage Site. The mountains here plunge into the clear sea while the fjords slip inland. Although it appears inhospitable, this territory was nonetheless one of the first sites in the New World to become known in Europe. Basque whalers took up residence here in the 16th century, and the Vikings had settled here as of 1000; these multiple influences make it an essential historic site.

As you continue your cruise, the rocky landscapes gradually make way for more fertile wooded expanses. North of the Gulf of Saint Lawrence, the sugar maple, yellow birch and American beech trees make up a unique and splendid forest, and the islands punctuate these rich waters in which many cetaceans frolic. Along these little-known shores, visit exciting historical sites and dive into the discovery of Inuit and Innu civilisations.

The salt water gradually becomes fresh water as you enter what is known as "the Walking Path", the renowned Saint Lawrence River. The soul of an entire people runs through its waters, and nature is breath-taking throughout it. Open your eyes to see, from land or from sea, the many species of birds and the marine mammals, including blue whales and the resident population of beluga whales. You will soon enter the heart of the Saguenay River, whose shores rise up as cliffs, sometimes more than 500 metres (1,640 feet) high. After discovering the city of Saguenay, you will visit incredible Quebec City. Founded by Samuel de Champlain in the 17th century, the capital of the Belle Province ("beautiful province") is listed as a UNESCO World Heritage Site for its magnificent historic centre.

Your journey will end in the warm and cosmopolitan Canadian city of Montreal.



Wild Earth Travel

*Small Ships, Big Adventures*

**0800 945 3327** (within New Zealand) | +64 (0) 3 365 1355 | **1800 107 715** (within Australia)

info@wildearth-travel.com | **wildearth-travel.com**

# Wild Earth Travel

*Small Ships, Big Adventures*

[wildearth-travel.com](http://wildearth-travel.com)

[info@wildearth-travel.com](mailto:info@wildearth-travel.com)



f Montreal.

## ITINERARY

### Day 1 SAINT PIERRE ISLAND, SAINT PIERRE AND MIQUELON

Off the Canadian coast, discover Saint Pierre Island, one of the two main islands of the Saint Pierre and Miquelon archipelago, the only French territory in North America. Endowed with a natural harbour, the island, whose name is a reference to the patron saint of fishermen, developed around the fishing industry and still has many traces of its past today. Whale hunting, cod fishing, alcohol smuggling during the Prohibition: all of these memories are still very much alive in the capital, Saint-Pierre. The island is also renowned for the observation of exceptional fauna including, among others, whales, fin whales, dolphins, seals, puffins and petrels.

### Day 2 MIQUELON ISLAND, SAINT PIERRE AND MIQUELON

At the entrance of the Gulf of Saint Lawrence, not far from the Grand Banks of

Newfoundland, Miquelon is one of the two main islands of the Saint Pierre and Miquelon archipelago and will delight those with a love of wide open space. Made up of three peninsulas connected by long sand spits, this wild land, famous for being home to France's only boreal forest, has sublime scenery of hills, dotted with ponds, woods and bogs, and ringed by lagoons and steep cliffs. The rich and varied wildlife is the promise of fine encounters, whether inland, populated with white-tailed deer, snowy owls and bald eagles, or on the coast, home to many sea birds and grey seals.

### Days 3 SYDNEY

At the entrance of the Gulf of Saint Lawrence, not far from the Grand Banks of Newfoundland, Miquelon is one of the two main islands of the Saint Pierre and Miquelon archipelago and will delight those with a love of wide open space. Made up of three peninsulas connected by long sand spits, this wild land, famous for being home to France's only boreal forest, has sublime scenery of hills, dotted with ponds, woods and bogs, and ringed by lagoons and steep cliffs. The rich and varied wildlife is the promise of fine encounters, whether inland, populated with white-tailed deer, snowy owls and bald eagles, or on the coast, home to many sea birds and grey seals.

### Day 4 - CAP-AUX-MEULES, MAGDALEN ISLANDS

Although it is the administrative and economic centre of the Magdalen Islands archipelago, in the Gulf of Saint Lawrence, the village of Cap-aux-Meules remains a peaceful location and is ideal for exploring preserved nature. Located on the eponymous island, in reference to the sandstone rocks of the cape that were used in the past to make grindstones, the location is above all considered to be the maritime gateway to the archipelago. In this respect, it offers privileged access to many sites renowned for their natural and historic heritage, such as the village of Havre-Aubert which is a member of the Most Beautiful Villages of Quebec.

### Day 5 - WOODY POINT, GROS MORNE NATIONAL PARK

Located in the heart of Gros Morne National Park, the small town of Woody Point has the typical charm of territories found at the end of the world. From there, you will set off to discover the national park, listed as a UNESCO World Heritage Site because of the beauty of its landscapes, whose geology unveils the evolution of continental drift through its extraordinary rock formations.

Wild Earth Travel

*Small Ships, Big Adventures*

0800 945 3327 (within New Zealand) | +64 (0) 3 365 1355 | 1800 107 715 (within Australia)

[info@wildearth-travel.com](mailto:info@wildearth-travel.com) | [wildearth-travel.com](http://wildearth-travel.com)



Sculpted by glacial activity, the park is home to coastal lowlands, alpine plateaux, hemmed-in fjords, immense valleys, jagged cliffs and several preserved lakes: you will marvel at every moment

#### Day 6 -7 - EXPLORING GULF OF ST. LAWRENCE

Set off in the wake of the discoverers of Quebec during an unprecedented exploration of the north coast of the Gulf of St. Lawrence. Jacques Cartier landed there during his first voyage in 1534, and the fishing trade subsequently attracted many settlers. The first peoples to settle in the region around 9,000 years ago were the Innu and the Naskapi. Today, several communities maintain a nomadic lifestyle close to nature. From Havre-Saint-Pierre, you will be able to discover the Mingan Archipelago, where limestone monoliths sculpted by erosion rise from the waters, forming an enchanting decor. Aboard local boats, the naturalist guides will help you identify the rich marine wildlife and a multitude of birds.

#### Day 8 HAVRE-SAINT-PIERRE

Located on the Northern Shore of Quebec, Havre St Pierre is the gateway to the amazing natural heritage that surrounds it. This Quebecois town provides an excellent base for exploring the string of islands sprinkled off the coast. From Havre St Pierre, you can visit the Mingan Archipelago National Park Reserve. This is a land forged by the sea and elements, where nature still rules. This chain of islands is renowned for its spectacular limestone formations.

#### Day 9-10 TADOUSSAC & SAGUENAY

The Quebec village of Tadoussac stands at the confluence of the Saguenay River and the Gulf of Saint-Lawrence, in south-east Canada. The village is bright with multicoloured houses nestling in an emerald-green pine forest. From the waterfront, it's easy to spy out Tadoussac Chapel, thanks to its bright red roof. Not far from this church built of wood, one of the oldest in North America, stands a century-old village holiday resort, Hotel Tadoussac. Treat yourself to tea on the terrace overlooking the shoreline. In addition, at the marine mammal interpretation centre, you can hone your knowledge of the cetaceans that regularly frequent Tadoussac bay. The city of Saguenay nestles in a valley through which flows the eponymous river, one of the region's treasures. As it joins the Saint-Lawrence, the Saguenay River forms a

spectacular fjord boasting extraordinarily differing landscapes. From Saguenay, you can explore the attractive Saguenay-Lac-Saint-Jean region, which is a paradise for those who love the great outdoors. You can combine country walks with boat trips within the various national parks studded throughout this extraordinary natural kingdom.

#### Day 11 - QUÉBEC

The capital of "La Belle Province" sits at the confluence of the St Charles River and the Gulf of St Lawrence in south-east Canada. Founded in the 17th century, the city still has an encircling wall, a historic civil engineering work and the only one of its kind remaining in North America. You will love the postcard-perfect stone houses of Old Quebec, the historic district listed as a UNESCO World Heritage site. Shopping is a pleasure in pedestrian streets such as Petit-Champlain Street, or you can relax over a spruce beer, seasoned with pine buds. Dufferin Boardwalk, an esplanade near the emblematic Chateau Frontenac, is the perfect place for views of the river and old city.

#### Day 12 - MONTREAL

Famous for its gentle way of life, Montreal, Canada's second-largest city, is a warm and cosmopolitan metropolis. Situated on the eponymous river island, it is home to a multitude of districts, each as unique as the other. Set off to discover Old Montreal, most of which is declared a historic area, Little Italy, where you'll be able to stroll around the largest open-air market in North America, or the Golden Square Mile, the luxurious district located on one of the hills of Mount Royal and which has sumptuous Victorian-style residences. Simultaneously marked by the influences of the Old Continent and North-American gigantism, Montreal will never cease to amaze you.

#### Please Note:

Itinerary subject to change





**wildearth-travel.com**

**info@wildearth-travel.com**

## YOUR SHIP: LE BOREAL

<b>YOUR SHIP:</b>	<b>Le Boreal</b>
<b>VESSEL TYPE:</b>	<b>Luxury Expedition / Cruise Ship</b>
<b>LENGTH:</b>	<b>142 meters</b>
	<b>264 (in twin cabins, 200 in</b>
<b>PASSENGER CAPACITY:</b>	<b>Antarctica)</b>
<b>BUILT/REFURBISHED:</b>	<b>2011</b>

A superb mega-yacht with 132 cabins, she is the fruit of the expertise of the Italian Fincantieri shipyard and French sophistication, as interpreted by designer Jean-Philippe Nuel. Le Boreal remains faithful to our philosophy - to create a unique atmosphere, a subtle blend of luxury, intimacy and well-being. Superior materials, discreet elegance and a tasteful decor combined with exterior and interior lines to reflect a nautical mood, subtly revisited. On board, soothing neutral tones are enlivened by splashes of red, our signature theme linking tradition and innovation to create personal touches in the spirit of a "private yacht".

### Cuisine

Loyal to the great French tradition, the haute cuisine on board is worthy of the finest restaurants, where discreet, attentive service is the hallmark.

Our two restaurants welcome you for breakfasts, lunch and dinner. The Gastronomic Restaurant, with a capacity of 268 persons, is situated on Le Liberte Deck and serves you French and international cuisine accompagnied by fine wine. On the Grill Restaurant, you will have the opportunity to eat outside

and enjoy buffet lunch and themed dinner.

### Life On Board

Whether you want to join other guests in the theatre or games area (Wii™ consoles, etc), or relax on your own in a quiet corner of the library, Le Boreal has been designed to meet the needs of every guest.

Everything has been done to preserve the independence of each guest to suit their personal tastes: lounges for lectures and shows, a spa in partnership with Carita™, but also more intimate spaces such as the library and internet corner. Comfortable cabins, nearly all with private balcony, are available for families either as triples or as communicating cabins. There is also a games area with Wii™ consoles, children's menus, and a baby-sitting service. Just as if you were on a private yacht, your time is your own to do as you please.

Fitted with the latest equipment (Kinesis Wall, running machine) and in partnership with the famous Carita™ brand, the Beauty Centre on Le Boreal welcomes you for some unforgettable moments of relaxation and pampering (beauty treatments, hairdresser, hammam, balneotherapy).



# Wild Earth Travel

*Small Ships, Big Adventures*



[wildearth-travel.com](http://wildearth-travel.com)[info@wildearth-travel.com](mailto:info@wildearth-travel.com)



eotherapy).



## Wild Earth Travel

*Small Ships, Big Adventures*

**0800 945 3327** (within New Zealand) | +64 (0) 3 365 1355 | **1800 107 715** (within Australia)

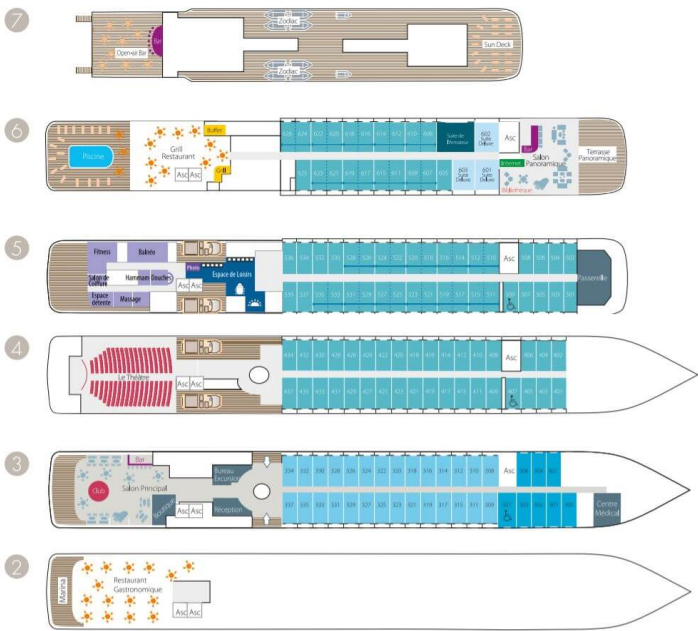
[info@wildearth-travel.com](mailto:info@wildearth-travel.com) | [wildearth-travel.com](http://wildearth-travel.com)



**Wild Earth Travel**  
*Small Ships, Big Adventures*

**wildearth-travel.com**      **info@wildearth-travel.com**

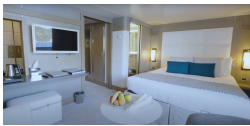
**INSIDE YOUR SHIP**



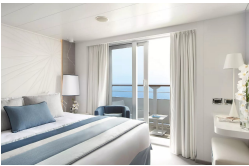
**DeLuxe Stateroom**



**Deluxe Suite**



**Grand Deluxe Suite**



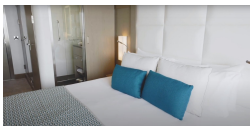
**Grand Privilege Suite**



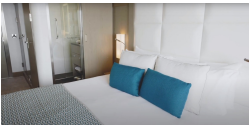
**Owner's suite**



**Prestige Stateroom - Deck 4**



**Prestige Stateroom - Deck 5**



**Prestige Stateroom - Deck 6**







**wildearth-travel.com**

**info@wildearth-travel.com**

## PRICING

### 17-Sep-2025 to 28-Sep-2025

Superior Stateroom	15380 AUD pp
DeLuxe Stateroom	16520 AUD pp
Prestige Stateroom - Deck 4	18140 AUD pp
Prestige Stateroom - Deck 5	18940 AUD pp
Prestige Stateroom - Deck 6	19900 AUD pp
Deluxe Suite	27000 AUD pp
Prestige Suite - Deck 5	35890 AUD pp
Privilege Suite	37660 AUD pp
Grand Deluxe Suite	42980 AUD pp
Grand Privilege Suite	50570 AUD pp
Owner's suite	66770 AUD pp

### 27-Sep-2025 to 08-Oct-2025

Superior Stateroom	14600 AUD pp
DeLuxe Stateroom	15660 AUD pp
Prestige Stateroom - Deck 4	17170 AUD pp
Prestige Stateroom - Deck 5	17920 AUD pp
Prestige Stateroom - Deck 6	18840 AUD pp
Deluxe Suite	25500 AUD pp
Prestige Suite - Deck 5	33810 AUD pp
Prestige Suite - Deck 6	35480 AUD pp
Owner's suite	52260 AUD pp

### 23-Sep-2026 to 04-Oct-2026

Superior Stateroom	15050 AUD pp
DeLuxe Stateroom	16210 AUD pp
Prestige Stateroom - Deck 4	17850 AUD pp
Prestige Stateroom - Deck 5	18680 AUD pp
Prestige Stateroom - Deck 6	19660 AUD pp
Deluxe Suite	26900 AUD pp
Prestige Suite - Deck 5	35960 AUD pp
Privilege Suite	37770 AUD pp
Grand Deluxe Suite	43200 AUD pp
Grand Privilege Suite	50940 AUD pp
Owner's suite	67490 AUD pp

### ADDITIONAL CHARGES:

Port Taxes & Fees 810 AUD pp



# Wild Earth Travel

*Small Ships, Big Adventures*



**wildearth-travel.com**

**info@wildearth-travel.com**

## SPECIAL OFFERS

Online prices reflect the current brochure fare savings of up to 30%. Prices may change based on demand. Terms and conditions apply. This special offer is subject to availability. Please contact us for more details.



Wild Earth Travel  
*Small Ships, Big Adventures*

**0800 945 3327** (within New Zealand) | +64 (0) 3 365 1355 | **1800 107 715** (within Australia)

info@wildearth-travel.com | **wildearth-travel.com**