



EXPEDITION TO THE EDGE OF THE ICE SHEET - GREENLAND & ICELAND LUXURY EXPEDITIONS

This PONANT itinerary is your chance to embark on a brand-new 14-day expedition cruise to Greenland. Aboard Le Lyrial, you will follow the Vikings' route, the first Europeans to discover eastern Greenland as far as Nuuk, in the steps of Erik the Red. You will also enjoy a combination of adventure and discovery in the company of an experienced team of naturalist guides, anthropologists, ornithologists and marine mammal specialists...

From Reykjavik, you will touch the east coast of Greenland in Tasiilaq, a city founded by the Danish explorer Gustav Holm. Located on Ammassalik island, on the edge of an inlet, it offers a breathtaking view of the icebergs whose thousand blue glittering reflections dot the horizon.

During your cruise and zodiac outings, you will have many opportunities to admire an abundant and varied fauna: seals, whales, orcas, not to mention the many species of seabirds.

Your ship will then sail down the narrow Prins Christian Sund passage, which connects the south-east of Greenland to the south-west. Jagged mountains, rocky cliffs, waterfalls and floating ice form a wonderful wild landscape in which frolic colonies of bearded seals.

To the country's west, you will sail amid the blue icebergs of the Narsaq region, and among the largest icebergs in the Northern Hemisphere in Disko Bay.



Disko Bay.

ITINERARY

Days 1 - 2 REYKJAVÍK

Iceland's capital stretches along the edge of a vast bay in the west of the country. Perlan, the "Pearl of Reykjavik", a museum located on 'Oskjuhlíð hill, offers a panoramic view of the lush, green landscapes. A little further, one can easily spot the signpost showing the way to the evangelical Hallgrímskirkja church, and to the historical centre where one can stroll along the Skólavörðustígur and the Laugavegur, two lively streets with charming small shops. For some relaxation just outside of the city, visitors have the opportunity to visit the Reykjanes peninsula and its famous thermal lagoons of the Blue Lagoon.



Wild Earth Travel

Small Ships, Big Adventures

wildearth-travel.com

info@wildearth-travel.com

Day 3 AT SEA

During your day at sea, make the most of the many services and activities on board. Treat yourself to a moment of relaxation in the spa or stay in shape in the fitness centre. Depending on the season, let yourself be tempted by the swimming pool or a spot of sunbathing. This day without a port of call will also be an opportunity to enjoy the conferences or shows proposed on board, to do some shopping in the boutique or to meet the PONANT photographers in their dedicated space. As for lovers of the open sea, they will be able to visit the ship's upper deck to admire the spectacle of the waves and perhaps be lucky enough to observe marine species. A truly enchanted interlude, combining comfort, rest and entertainment.

Day 4 TASIILAQ & SERMILIK FJORD

In Tasiilaq, on Ammassalik Island, follow in the wake of Captain Jean-Baptiste Charcot's famous ship, the *Pourquoi Pas ?*, which set off with its crew in 1935 to discover this small island of primitive and wild beauty that remained unexplored until the end of the 19th century. Along with Ittoqqortoormiit, a village with 500 inhabitants located at the entrance of the Scoresby Sound, the village of Tasiilaq and its surroundings, 800 kilometres (500 miles) further north, are the only inhabited areas on the east coast of Greenland. The name of this island is a reference to the capelin, a small flamboyant silver-coloured fish whose presence in the thousands announces to inhabitants the return of spring. A surprising discovery in a spectacular setting. You will be captivated by the spectacular scenery of the Sermilik Fjord, the largest in the south-east of Greenland. To the north, above the glacial valleys, the Schweizerland Alps and their peaks that rise to an altitude of more than 3,000 metres (10,000 feet) stretch out in the distance, while in the south, where it opens onto the Irminger Sea, heavy erosion has carved the landscape. Three main glaciers calve a multitude of dazzling icebergs that drift serenely along the indigo waters of this majestic fjord. It owes its name to the Inuit word Sermilik, which generally refers to a fjord into which a glacier flows. It was mapped in 1884 by the Danish explorer Gustav Holm and his crew, while they wintered in the Ammassalik region.

Day 5 SKJOLDUNGEN

Discover Skjoldungen Island on the south-east coast of Greenland. This uninhabited land boasts magnificent landscapes that are sure to dazzle you.

The island is surrounded by a stunning fjord, a distinctive feature of which is its double entrance: it forms a bend before joining the sea on the other side. Mountains, glacial valleys, rocky outcrops, tundra and willow forests make up the beautiful scenery which you will be able to admire more closely when you land here. At this port of call, surrounded by wild and pristine nature, it is quite common to see bearded seals, orcas, but also birds such as the common redpoll, the northern wheatear, or the common raven.

Day 6 AAPPILATTOQ (AUGPILATOK)

Aappilattoq (Augpilatok), is a small Inuit village of around one hundred inhabitants, whose name means "sea anemone" in Greenlandic. Located in a mountainous region inaccessible by road, its picturesque, colourful houses stretch out to the southern tip of Greenland, on the banks of the spectacular Prince Christian Sound. Some one hundred kilometres long, the sound connects the Labrador Sea to the Irminger Sea, meandering through stunning landscapes such as majestic glaciers, craggy peaks, and rocky cliffs with waterfalls fed by the ice sheet. This region was uninhabited in the 19th century. The village was created in the 1920s and the main activities revolve around hunting, fishing and livestock farming.

Day 7 HVALSO & NARSAQ FJORD

Around you, a grassy meadow filled with flowers stretches out, dotted with imposing granite rocks. A few semi-wild sheep and horses greet you; they are the only inhabitants of this place surrounded by beautiful mountains. You are in Hvalsø, in the heart of the fertile lands in Greenland's south. During the 10th century, this site was colonised by the Vikings, who established a large community here. When your ship calls at these lands brimming with history, you will see the ruins of a church whose remains are still very well preserved. It was most likely built in the 14th century. It has lost its timber roof, but its four stone walls continue to stand proudly as a moving relic of a long-gone era. From your ship, discover the town of Narsaq. You will be dazzled by the beauty of the surrounding icebergs – large masses of ice in different shapes and shifting colours. Dominated by lush mountains, this small town is typical of Greenland and is located in the heart of a wonderful natural landscape. The multicoloured house facades and the glaciers with their myriad shades of blue offer a magical setting, conducive to wonderment.

Day 8 IVIGTUT

Wild Earth Travel
Small Ships, Big Adventures

0800 945 3327 (within New Zealand) | +64 (0) 3 365 1355 | **1800 107 715** (within Australia)

info@wildearth-travel.com | wildearth-travel.com



Wild Earth Travel

Small Ships, Big Adventures

wildearth-travel.com

info@wildearth-travel.com

Located in the Arsuk Fjord, Ivigtut, now called Ivittuut, is a small town in southwestern Greenland known for being rich in cryolite, a very rare mineral used in the ceramics industry and to extract aluminium from bauxite. The open-pit mine was a once major economic resource for Greenland: a prosperous mining activity developed there in the 19th century until 1963 when the mine was closed. In the 32 km-long (22 miles) fjord that runs along the small town surrounded by tundra landscapes, you might be fortunate enough to see whales or orquals swimming nonchalantly in the cold water.

Day 9 NUUK

When Erik Le Rouge, the exiled Norse chief, landed on the coast of Nuuk, he found a fertile and welcoming land dotted with fjords. He settled there with a group of his former countrymen, and the Norse remained the principal inhabitants until, over a period of 500 years, their population declined and gave way to the Inuit. Nuuk is situated at the mouth of one of the largest networks of fjords in the world, where the waters never freeze. The town spreads gently out towards the Davis Strait and enjoys an historic center that is particularly rich in national heritage. The vivid reds, blues, greens and yellows of the houses are a lively contrast to the somber waters of Greenland and serve to lift the spirits of the locals during the Winter months.

Day 10 SISIMIUT

During your cruise, we invite you to discover Sisimiut, founded in 1756 and the second largest town in Greenland. This small town is typical of Greenland, boasting bewitching panoramas: here and there, colourful stilt houses dot the undulating landscape, and the small fishing port stands as the gateway to an icy realm. As for the town centre, it is home to a number of historic buildings, a small church and a museum which retraces the history of the Inuit people, as well as many craft shops. When your ship drops anchor here, you will set out to meet the locals in a typically arctic atmosphere.

Day 11 PAUL-ÉMILE VICTOR BASE CAMP, EQI GLACIER

"The most beautiful place in the Arctic" is how Paul-Émile Victor described Greenland, a land of great icebergs and of towering ice formations calved by the giant glaciers of the polar ice cap. The Egi Glacier is one of the region's

most impressive sights. Here, the silence is broken only by the roaring and cracking of the ice. It is impossible to know if one is shivering from cold or from the sheer thrill of being here... Imagine the vast outline of a glacier, its translucent crystals glowing with an ice-blue fire in the sunlight. Paul-Émile Victor's shelter cannot be overlooked; it was from here that the French Polar Expeditions' anthropological and geographic explorations set off in the 1950s.

Day 12 DISKO BAY

To the east of Baffin Bay, discover Disko Bay, scattered with countless icebergs produced by the Ilulissat Icefjord, a UNESCO World Heritage Site. From your ship, admire the majestic ballet of these ice giants as they slowly drift across the dark waters. This site is a natural marvel of Greenland, and is also renowned as an observation point for the region's many humpback whales. The encounters with wild fauna and stunning landscapes in the heart of this spectacular and fragile nature will be pure moments of wonder for you.

Day 13 ITILLEQ

Itilleq is a tiny island lying within the Arctic Circle, 45 km south of Sisimiut. Home to barely 100 people, they mainly earn a living from fishing and hunting in their typical Greenlandic village, whose bright colours evoke those of their traditional clothing. During your visit, you will maybe have the pleasure of playing a game of football with them, enjoying a "kaffemik" (a coffee break) or a moment of contemplation when the gentle light of the midnight sun dapples the horizon.

Day 14 KANGERLUSSUAQ

From 1941 to 1992, the town of Kangerlussuaq in Greenland was home to an American military base. Nowadays, thanks to its international airport, it has become a transit point for travellers seeking adventure in the Far North. Located to the north of the Arctic Circle, this town is the starting point of magnificent discoveries surrounded by unspoiled nature. Indeed, just a few dozen kilometres from there it is possible to get close to the Greenland ice sheet, the largest body of ice in the Northern Hemisphere. From Kangerlussuaq, admire also the superb landscapes of tundra in autumnal colours, where Arctic hares, musk oxen, Arctic foxes, reindeer, falcons and eagles live.

Wild Earth Travel

Small Ships, Big Adventures

0800 945 3327 (within New Zealand) | +64 (0) 3 365 1355 | **1800 107 715** (within Australia)

info@wildearth-travel.com | **wildearth-travel.com**



Please Note:

We are privileged guests in these remote lands where we are at the mercy of weather, ice, tidal and current conditions. Landings on certain sites and the observation of certain wildlife cannot be guaranteed. They vary from day to day, making each PONANT cruise a unique experience. The Captain and the Expedition Leader will make every effort to ensure that your experience is as rich as possible, while complying with the safety rules and instructions imposed by the AECO.

Wild Earth Travel

Small Ships, Big Adventures

wildearth-travel.com

info@wildearth-travel.com

YOUR SHIP: L'AUSTRAL

YOUR SHIP:	L'Austral
VESSEL TYPE:	Luxury Expedition / Cruise Ship
LENGTH:	142 metres
PASSENGER CAPACITY:	264 (200 in Antarctica)
BUILT/REFURBISHED:	2011

This superb mega-yacht with 132 cabins is the result of the expertise of the Italian Fincantieri shipyard and French sophistication, as interpreted by designer Jean-Philippe Nuel. L'Austral has a unique atmosphere, a subtle blend of luxury, intimacy and well-being.

A sleek silhouette softened by elegantly smooth contours and large, arched windows opening up to the sea and the light: so many features come together to give L'Austral her distinctive shape. Precious materials, discreet elegance and a perfect balance between chic and casual, combine to make you feel as if you are on your own private yacht. A design blending tradition and innovation, where a nautical mood has been subtly recreated. Precious materials in smoothing neutral tones are brought to life with splashes of cheerful reds. So many personal touches create the spirit of a "private yacht".

Cuisine

Loyal to the great French tradition, the haute cuisine on board is worthy of the finest restaurants, where discreet, attentive service is the hallmark.

Our two restaurants welcome you for breakfasts, lunch and dinner. The Gastronomic Restaurant, with a capacity of 268

persons, is situated on Le Liberte Deck and serves you French and international cuisine accompagnied by fine wine. On the Grill Restaurant, you will have the opportunity to eat outside and enjoy buffet lunch and themed dinner.

Life On Board

Whether you want to join other guests in the theatre or games area (Wii™ consoles, etc), or relax on your own in a quiet corner of the library, L'Austral has been designed to meet the needs of every guest.

Everything has been done to preserve the independence of each guest to suit their personal tastes: lounges for lectures and shows, a spa in partnership with Sothys™, but also more intimate spaces such as the library and internet corner. Comfortable cabins, nearly all with private balcony, are available for families either as triples or as communicating cabins. There is also a games area with Wii™ consoles, children's menus, and a baby-sitting service. Just as if you were on a private yacht, your time is your own to do as you please.

Fitted with the latest equipment (Kinesis Wall, running machine) and in partnership with the famous

Sothys™ brand, the Beauty Centre on L'Austral welcomes you for some unforgettable moments of relaxation and pampering (beauty treatments, hairdresser).



Wild Earth Travel

Small Ships, Big Adventures

0800 945 3327 (within New Zealand) | +64 (0) 3 365 1355 | **1800 107 715** (within Australia)

info@wildearth-travel.com | wildearth-travel.com



Wild Earth Travel

Small Ships, Big Adventures

wildearth-travel.com

info@wildearth-travel.com

irdresser).

Wild Earth Travel
Small Ships, Big Adventures

0800 945 3327 (within New Zealand) | +64 (0) 3 365 1355 | **1800 107 715** (within Australia)

info@wildearth-travel.com | **wildearth-travel.com**

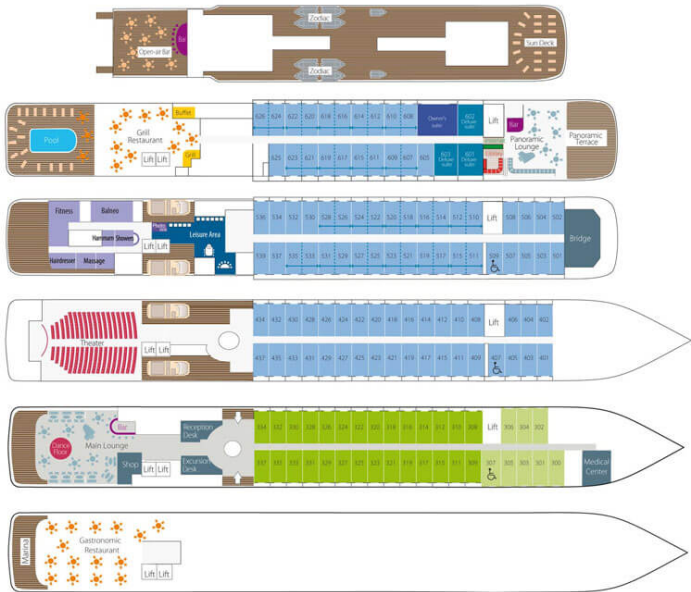


Wild Earth Travel
Small Ships, Big Adventures

wildearth-travel.com

info@wildearth-travel.com

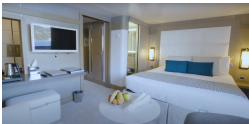
INSIDE YOUR SHIP



DeLuxe Stateroom



DeLuxe Suite



Grand Privilege Suite



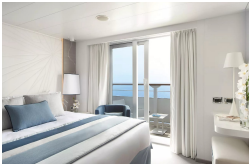
Owner's suite



Deluxe Stateroom



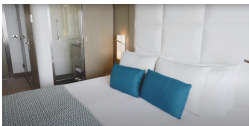
Grand Deluxe Suite



Owner's Suite



Prestige Stateroom - Deck 4



Wild Earth Travel
Small Ships, Big Adventures

0800 945 3327 (within New Zealand) | +64 (0) 3 365 1355 | **1800 107 715** (within Australia)

info@wildearth-travel.com | wildearth-travel.com



Wild Earth Travel

Small Ships, Big Adventures

wildearth-travel.com

info@wildearth-travel.com

PRICING

08-Aug-2025 to 21-Aug-2025

Superior Stateroom	17690 AUD pp
DeLuxe Stateroom	19020 AUD pp
Prestige Stateroom - Deck 4	20920 AUD pp
Prestige Stateroom - Deck 5	21880 AUD pp
Prestige Stateroom - Deck 6	23020 AUD pp
Deluxe Suite	31410 AUD pp
Prestige Suite - Deck 5	41890 AUD pp
Privilege Suite	43990 AUD pp
Grand Deluxe Suite	50290 AUD pp
Grand Privilege Suite	59250 AUD pp
Owner's suite	78380 AUD pp

20-Jul-2026 to 02-Aug-2026

Superior Stateroom	17870 AUD pp
Deluxe Stateroom	19220 AUD pp
Prestige Stateroom Deck 4	21160 AUD pp
Prestige Stateroom Deck 5	22140 AUD pp
Prestige Stateroom Deck 6	23310 AUD pp
Deluxe Suite	31850 AUD pp
Prestige Suite Deck 5	42540 AUD pp
Prestige Suite Deck 6	44680 AUD pp
Owner's Suite	62290 AUD pp

14-Aug-2026 to 27-Aug-2026

Superior Stateroom	17870 AUD pp
DeLuxe Stateroom	19220 AUD pp
Prestige Stateroom - Deck 4	21160 AUD pp
Prestige Stateroom - Deck 5	22140 AUD pp
Prestige Stateroom - Deck 6	23310 AUD pp
Deluxe Suite	31850 AUD pp
Prestige Suite - Deck 5	42540 AUD pp
Privilege Suite	44680 AUD pp
Grand Deluxe Suite	51110 AUD pp
Grand Privilege Suite	60240 AUD pp
Owner's suite	79780 AUD pp

ADDITIONAL CHARGES:

Port Taxes & Fees 960 AUD pp

Wild Earth Travel
Small Ships, Big Adventures

0800 945 3327 (within New Zealand) | +64 (0) 3 365 1355 | **1800 107 715** (within Australia)

info@wildearth-travel.com | wildearth-travel.com



Wild Earth Travel

Small Ships, Big Adventures

wildearth-travel.com

info@wildearth-travel.com

SPECIAL OFFERS

Online prices reflect the current brochure fare savings of up to 30%. Prices may change based on demand. Terms and conditions apply. This special offer is subject to availability. Please contact us for more details.



Wild Earth Travel

Small Ships, Big Adventures

0800 945 3327 (within New Zealand) | +64 (0) 3 365 1355 | **1800 107 715** (within Australia)

info@wildearth-travel.com | **wildearth-travel.com**