



Wild Earth Travel

Small Ships, Big Adventures

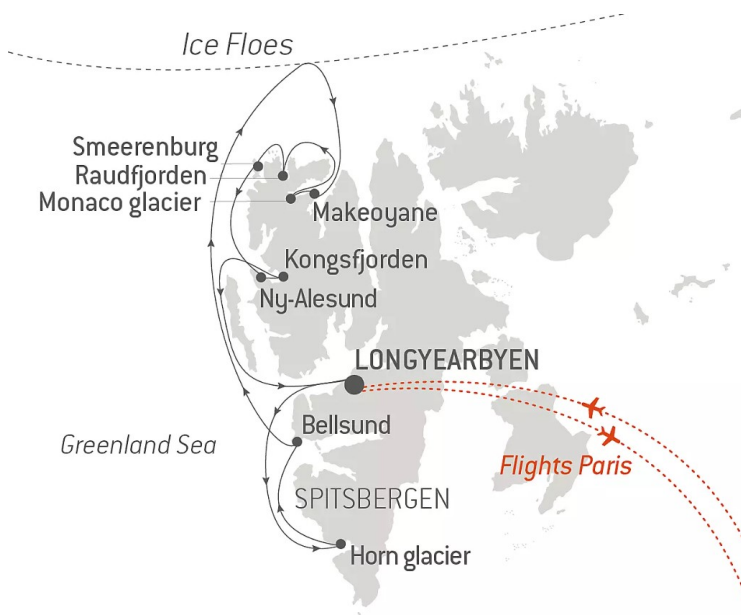
wildearth-travel.com

info@wildearth-travel.com

FJORDS AND GLACIERS OF SPITSBERGEN - LUXURY ADVENTURE EXPEDITION

Somewhere in the High Arctic, between 76 and 80 degrees latitude North, Spitsbergen, meaning "pointed mountains", awaits you for seven days of unforgettable travel looking out for wild life. You will lift the anchor in Longyearbyen, where colourful wooden homes dot the landscape with a human presence that will certainly be the last you see for a while. The sea rolls on, and the white-striped mountains, which gave the region its name, rise up from deeply tinted waters. The polar light combines with the changing weather of the Arctic, a big blue sky, the horizon scattered with clouds, the enveloping mist erasing the border between the land and the sea: these variations all provide the magical, almost surreal, setting with new nuances. The ship is escorted by Arctic fulmars. The first ice appears; still discreet, it seems to be dancing around you. At the end of a fjord, you will find yourself before an immense glacier. Black-legged kittiwakes share an iceberg, while Arctic terns fly over the area. Aboard the ship or a Zodiac dinghy, you will admire the power of nature while becoming aware of its fragility. The music of the thaw has begun its soft melody: a combination of cracking, roaring, murmuring and fizzing defies the silence of the polar desert. On land, you will set foot on malleable earth, known as moraine. Only moss, lichen and a few rare flowers have managed to adapt and to take hold here, forming the tundra. On these inhospitable lands, Svalbard reindeer and Arctic foxes coexist with walruses, lying on the beach. It has been a long time since the Pomor settlers, of which traces remain, came to hunt them. Here, the lord of the Arctic, the polar bear, is never very far away. The crucial aspects of this cruise involve searching and keeping an eye out. On board, the

team of naturalists will scan the horizon so they can provide you with marvellous sightings of wildlife and, in particular, the polar bear. The region's elusive fauna upholds its mysteries while the uncertain nature of the encounter bestows an indescribable magic upon it.



ic upon it.

ITINERARY

Day 1 LONGYEARBYEN, SPITSBERGEN

Longyearbyen is the capital of the Norwegian Svalbard archipelago, located on Svalbard's main island, and is the northernmost territorial capital on the planet. With winter temperatures dropping to below 40°C, the landscapes of

Wild Earth Travel
Small Ships, Big Adventures

0800 945 3327 (within New Zealand) | +64 (0) 3 365 1355 | **1800 107 715** (within Australia)

info@wildearth-travel.com | wildearth-travel.com



this mining town are simply breathtaking. The glaciers, the mountains stretching as far as the eye can see and the untouched nature, make you feel like you're in completely unexplored territory.

Day 2 HORNSUND

Nestling between millennial glaciers and carved mountains, and considered to be "the crown of Arctic Norway", Spitsbergen is a place that never sees the night. Your ship will take you closer to this fascinating archipelago and, more particularly, the Hornsund fjord. Considered to be Svalbard's southernmost fjord, it is especially reputed to be its most stunning: at the end of its vast bay, 8 great glaciers slowly make their way down to the sea before giving way to the many icebergs elegantly drifting along its cold and mysterious waters.

Day 3 BELLSUND, SPITSBERGEN

You will head to the Bellsund fjord to follow in the footsteps of the first explorers who came from the Norwegian coast, or those of the many fur traders seeking game and trophies. Boasting an astonishingly rich wildlife, the arms of the fjord separate to form two lush valleys. Give free rein to your imagination in the heart of this majestic natural environment where time seems to stand still.

Day 4 SAILING TOWARD THE ICE FLOES

Your captain will sail right up to the limit of the ice, to the edge of the ice floe. Weather conditions and state of the ice allowing, you will be able to go out in a zodiac dinghy for a unique experience in the middle of these floating slabs of ice. In addition to this grandiose journey through the middle of these floes with their cut and blue-tinged edges, sometimes over 2 metres thick, it is also often an opportunity to see a particular kind of fauna, totally dependent on the ice floe: birds, seals and polar bears.

Day 5 MAKEOYANE, SPITSBERGEN & MONACO GLACIER, SPITSBERGEN

Makeøyane is a small archipelago in the heart of the Woodfjorden, whose names is a reference to the large quantities of driftwood washing up on the beaches. It is located at the intersection between the Bockfjorden and the

Liefdefjorden which leads to the Monaco Glacier, one of the most beautiful in Spitsbergen. As you sail around these little islands, you will be able to observe Arctic terns whose eggs sometimes attract polar bears. Located to the North-West of the Svalbard archipelago, the Monaco Glacier is probably one of Spitsbergen's most beautiful and majestic. Named in honour of Prince Albert I of Monaco, a sailor, it stands as an impenetrable, blue-tinged jagged wall, the last glacier before reaching a latitude of 80° North. Imagine the sound of the ice cracking as it breaks free and crashes into the transparent water. And to make the magical landscape even more perfect, you might be lucky enough to spot bears and whales, as these two animals have a special fondness for this area.

Day 6 RAUDFJORDEN, SPITSBERGEN & SMEERENBURG, SPITSBERGEN

Raudfjorden means "red fjord", from the colour of the sandstone of the surrounding mountains. Along the west coast of this 20 km fjord, dissected by many shallow bays, you will be able to admire some of Spitsbergen's most spectacular ice formations. At the extremity of the fjord, two offshoots lead to the magnificent glaciers of Chauveaubreen and Raudfjordbreen which is 3 km wide. To the east, Alicehamna Beach in Bruceneset Bay has seen trappers, fishermen and explorers arrive for centuries, as evidenced by the "Raudfjordhytta" \- the cabin of a Swedish trapper built in 1927. Located at the far north-west of the Svalbard archipelago, at the intersection of oceanic and Arctic influences, Smeerenburg is a former Dutch whaling colony on the southern part of Amsterdam Island. In a landscape of hills with steep slopes, plateaux, lakes and lagoons, you will anchor at a sandy beach. Dotted with driftwood and the remains of ovens that were used to melt the whale blubber, this is one of Spitsbergen's most important archaeological sites. At the height of the whaling activity, 200 men worked here and several are buried here.

Day 7 NY-ALESUND, SPITSBERGEN & KONGSFJORDEN (KING BAY), SPITSBERGEN

During your cruise, discover Ny-Ålesund, a former mining town that has been transformed into a scientific base. Founded in 1916, this small town was the departure point for many Arctic expeditions, including those of the famous explorer Roald Amundsen. Don't miss a visit to the museum and its famous post office, considered to be the most northerly in the world! Very close to the former mining town of Ny-Ålesund, set off to discover Kings Bay. Your ship will sail in one of the most beautiful fjords in Svalbard: Kongsfjorden (the fjord of



Wild Earth Travel

Small Ships, Big Adventures

wildearth-travel.com

info@wildearth-travel.com

the King), a gateway to grandiose landscapes. Here, the snow-capped mountains are reflected in the water where superb icebergs try to outdo each other in their beauty, a delight for photographers. Seals, reindeer, barnacle geese and black guillemots frequent these places that have a unique atmosphere. Once you arrive at the end of the fjord, admire the Kongsbreen (glacier of the King) and its three characteristic rocky points, which take their names from three Scandinavian countries: Svea (Sweden), Dana (Denmark) and Nora (Norway).

Day 8 LONGYEARBYEN, SPITSBERGEN

Longyearbyen is the capital of the Norwegian Svalbard archipelago, located on Svalbard's main island, and is the northernmost territorial capital on the planet. With winter temperatures dropping to below 40°C, the landscapes of this mining town are simply breathtaking. The glaciers, the mountains stretching as far as the eye can see and the untouched nature, make you feel like you're in completely unexplored territory.

Please Note:

Itineraries are subject to change.

Wild Earth Travel
Small Ships, Big Adventures

0800 945 3327 (within New Zealand) | +64 (0) 3 365 1355 | **1800 107 715** (within Australia)

info@wildearth-travel.com | **wildearth-travel.com**



Wild Earth Travel

Small Ships, Big Adventures

wildearth-travel.com

info@wildearth-travel.com

YOUR SHIP: LE BOREAL

YOUR SHIP:	Le Boreal
VESSEL TYPE:	Luxury Expedition / Cruise Ship
LENGTH:	142 meters
	264 (in twin cabins, 200 in Antarctica)
PASSENGER CAPACITY:	
BUILT/REFURBISHED:	2011

A superb mega-yacht with 132 cabins, she is the fruit of the expertise of the Italian Fincantieri shipyard and French sophistication, as interpreted by designer Jean-Philippe Nuel. Le Boreal remains faithful to our philosophy - to create a unique atmosphere, a subtle blend of luxury, intimacy and well-being. Superior materials, discreet elegance and a tasteful decor combined with exterior and interior lines to reflect a nautical mood, subtly revisited. On board, soothing neutral tones are enlivened by splashes of red, our signature theme linking tradition and innovation to create personal touches in the spirit of a "private yacht".

Cuisine

Loyal to the great French tradition, the haute cuisine on board is worthy of the finest restaurants, where discreet, attentive service is the hallmark.

Our two restaurants welcome you for breakfasts, lunch and dinner. The Gastronomic Restaurant, with a capacity of 268 persons, is situated on Le Liberte Deck and serves you French and international cuisine accompagnied by fine wine. On the Grill Restaurant, you will have the opportunity to eat outside

and enjoy buffet lunch and themed dinner.

Life On Board

Whether you want to join other guests in the theatre or games area (Wii™ consoles, etc), or relax on your own in a quiet corner of the library, Le Boreal has been designed to meet the needs of every guest.

Everything has been done to preserve the independence of each guest to suit their personal tastes: lounges for lectures and shows, a spa in partnership with Carita™, but also more intimate spaces such as the library and internet corner. Comfortable cabins, nearly all with private balcony, are available for families either as triples or as communicating cabins. There is also a games area with Wii™ consoles, children's menus, and a baby-sitting service. Just as if you were on a private yacht, your time is your own to do as you please.

Fitted with the latest equipment (Kinesis Wall, running machine) and in partnership with the famous Carita™ brand, the Beauty Centre on Le Boreal welcomes you for some unforgettable moments of relaxation and pampering (beauty treatments, hairdresser, hammam, balneotherapy).

Wild Earth Travel
Small Ships, Big Adventures

0800 945 3327 (within New Zealand) | +64 (0) 3 365 1355 | **1800 107 715** (within Australia)

info@wildearth-travel.com | **wildearth-travel.com**



Wild Earth Travel

Small Ships, Big Adventures

wildearth-travel.com

info@wildearth-travel.com



eootherapy).



Wild Earth Travel

Small Ships, Big Adventures

0800 945 3327 (within New Zealand) | +64 (0) 3 365 1355 | **1800 107 715** (within Australia)

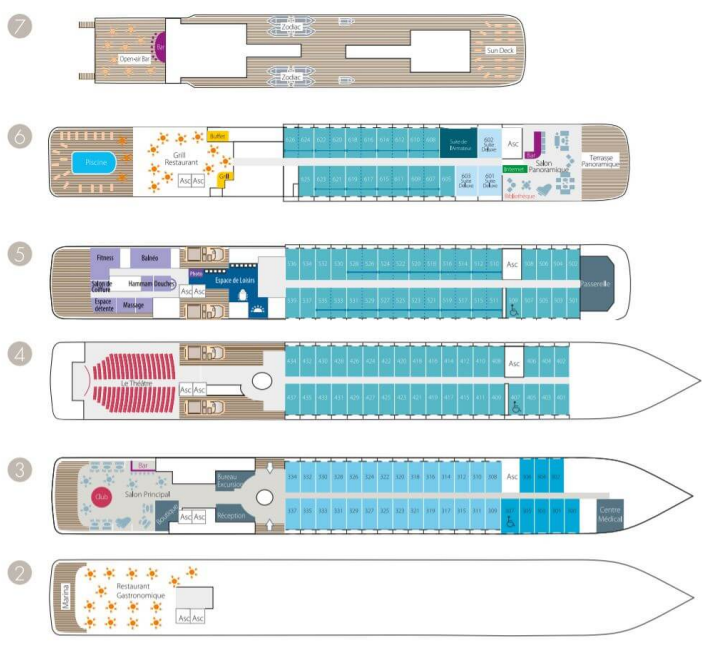
info@wildearth-travel.com | **wildearth-travel.com**



Wild Earth Travel
Small Ships, Big Adventures

wildearth-travel.com **info@wildearth-travel.com**

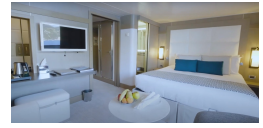
INSIDE YOUR SHIP



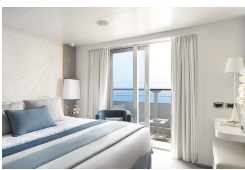
DeLuxe Stateroom



Deluxe Suite



Grand Deluxe Suite



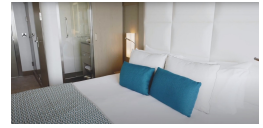
Grand Privilege Suite



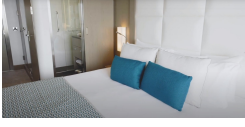
Owner's suite



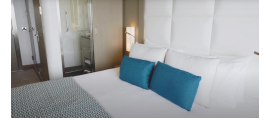
Prestige Stateroom - Deck 4



Prestige Stateroom - Deck 5



Prestige Stateroom - Deck 6





PRICING

07-Jun-2025 to 14-Jun-2025

Superior Stateroom	16900 AUD pp
DeLuxe Stateroom	18050 AUD pp
Prestige Stateroom - Deck 4	19700 AUD pp
Prestige Stateroom - Deck 5	20540 AUD pp
Prestige Stateroom - Deck 6	21510 AUD pp
Deluxe Suite	28800 AUD pp
Prestige Suite - Deck 5	37890 AUD pp
Privilege Suite	39700 AUD pp
Grand Deluxe Suite	45170 AUD pp
Grand Privilege Suite	52940 AUD pp
Owner's suite	62490 AUD pp

Superior Stateroom	15430 AUD pp
DeLuxe Stateroom	16450 AUD pp
Prestige Stateroom - Deck 4	17920 AUD pp
Prestige Stateroom - Deck 5	18670 AUD pp
Prestige Stateroom - Deck 6	19530 AUD pp
Deluxe Suite	26010 AUD pp
Prestige Suite - Deck 5	34090 AUD pp
Prestige Suite - Deck 6	35700 AUD pp
Owner's suite	49260 AUD pp

14-Jun-2025 to 21-Jun-2025

Superior Stateroom	15430 AUD pp
DeLuxe Stateroom	16450 AUD pp
Prestige Stateroom - Deck 4	17920 AUD pp
Prestige Stateroom - Deck 5	18670 AUD pp
Prestige Stateroom - Deck 6	19530 AUD pp
Deluxe Suite	26010 AUD pp
Prestige Suite - Deck 5	34090 AUD pp
Privilege Suite	35700 AUD pp
Grand Deluxe Suite	40560 AUD pp
Grand Privilege Suite	47470 AUD pp
Owner's suite	62490 AUD pp

15-Jun-2025 to 22-Jun-2025



Wild Earth Travel

Small Ships, Big Adventures

wildearth-travel.com

info@wildearth-travel.com

PRICING

21-Jun-2025 to 28-Jun-2025

Superior Stateroom	14690 AUD pp
DeLuxe Stateroom	15650 AUD pp
Prestige Stateroom - Deck 4	17030 AUD pp
Prestige Stateroom - Deck 5	17730 AUD pp
Prestige Stateroom - Deck 6	18540 AUD pp
Deluxe Suite	24620 AUD pp
Prestige Suite - Deck 5	32190 AUD pp
Privilege Suite	33700 AUD pp
Grand Deluxe Suite	38250 AUD pp
Grand Privilege Suite	44730 AUD pp
Owner's suite	62490 AUD pp

Superior Stateroom	14690 AUD pp
DeLuxe Stateroom	15650 AUD pp
Prestige Stateroom - Deck 4	17030 AUD pp
Prestige Stateroom - Deck 5	17730 AUD pp
Prestige Stateroom - Deck 6	18540 AUD pp
Deluxe Suite	24620 AUD pp
Prestige Suite - Deck 5	32190 AUD pp
Privilege Suite	33700 AUD pp
Grand Deluxe Suite	38250 AUD pp
Grand Privilege Suite	44730 AUD pp
Owner's suite	62490 AUD pp

22-Jun-2025 to 29-Jun-2025

Superior Stateroom	14690 AUD pp
DeLuxe Stateroom	15650 AUD pp
Prestige Stateroom - Deck 4	17030 AUD pp
Prestige Stateroom - Deck 5	17730 AUD pp
Prestige Stateroom - Deck 6	18540 AUD pp
Deluxe Suite	24620 AUD pp
Prestige Suite - Deck 5	32190 AUD pp
Prestige Suite - Deck 6	33700 AUD pp
Owner's suite	49260 AUD pp

28-Jun-2025 to 05-Jul-2025

Wild Earth Travel
Small Ships, Big Adventures

0800 945 3327 (within New Zealand) | +64 (0) 3 365 1355 | **1800 107 715** (within Australia)

info@wildearth-travel.com | wildearth-travel.com



Wild Earth Travel

Small Ships, Big Adventures

wildearth-travel.com

info@wildearth-travel.com

PRICING

29-Jun-2025 to 06-Jul-2025

Superior Stateroom	14690 AUD pp
DeLuxe Stateroom	15650 AUD pp
Prestige Stateroom - Deck 4	17030 AUD pp
Prestige Stateroom - Deck 5	17730 AUD pp
Prestige Stateroom - Deck 6	18540 AUD pp
Deluxe Suite	24620 AUD pp
Prestige Suite - Deck 5	32190 AUD pp
Prestige Suite - Deck 6	33700 AUD pp
Owner's suite	49260 AUD pp

05-Jul-2025 to 12-Jul-2025

Superior Stateroom	16160 AUD pp
DeLuxe Stateroom	17250 AUD pp
Prestige Stateroom - Deck 4	18810 AUD pp
Prestige Stateroom - Deck 5	19600 AUD pp
Prestige Stateroom - Deck 6	20520 AUD pp
Deluxe Suite	27410 AUD pp
Prestige Suite - Deck 5	35990 AUD pp
Privilege Suite	37700 AUD pp
Grand Deluxe Suite	42860 AUD pp
Grand Privilege Suite	50200 AUD pp
Owner's suite	62490 AUD pp

12-Jul-2025 to 19-Jul-2025

Superior Stateroom	16160 AUD pp
DeLuxe Stateroom	17250 AUD pp
Prestige Stateroom - Deck 4	18810 AUD pp
Prestige Stateroom - Deck 5	19600 AUD pp
Prestige Stateroom - Deck 6	20520 AUD pp
Deluxe Suite	27410 AUD pp
Prestige Suite - Deck 5	35990 AUD pp
Privilege Suite	37700 AUD pp
Grand Deluxe Suite	42860 AUD pp
Grand Privilege Suite	50200 AUD pp
Owner's suite	62490 AUD pp

Wild Earth Travel
Small Ships, Big Adventures

0800 945 3327 (within New Zealand) | +64 (0) 3 365 1355 | **1800 107 715** (within Australia)

info@wildearth-travel.com | wildearth-travel.com

Wild Earth Travel

Small Ships, Big Adventures

wildearth-travel.com

info@wildearth-travel.com

PRICING

13-Jun-2026 to 20-Jun-2026

Superior Stateroom	16470 AUD pp
DeLuxe Stateroom	17640 AUD pp
Prestige Stateroom - Deck 4	19300 AUD pp
Prestige Stateroom - Deck 5	20130 AUD pp
Prestige Stateroom - Deck 6	21120 AUD pp
Deluxe Suite	28430 AUD pp
Prestige Suite - Deck 5	37570 AUD pp
Privilege Suite	39390 AUD pp
Grand Deluxe Suite	44880 AUD pp
Grand Privilege Suite	52690 AUD pp
Owner's suite	59150 AUD pp

20-Jun-2026 to 27-Jun-2026

Superior Stateroom	15820 AUD pp
DeLuxe Stateroom	17050 AUD pp
Prestige Stateroom - Deck 4	18800 AUD pp
Prestige Stateroom - Deck 5	19680 AUD pp
Prestige Stateroom - Deck 6	20720 AUD pp
Deluxe Suite	28410 AUD pp
Prestige Suite - Deck 5	38030 AUD pp
Privilege Suite	39950 AUD pp
Grand Deluxe Suite	45730 AUD pp
Grand Privilege Suite	53950 AUD pp
Owner's suite	58320 AUD pp

27-Jun-2026 to 04-Jul-2026

Superior Stateroom	12980 AUD pp
DeLuxe Stateroom	13840 AUD pp
Prestige Stateroom - Deck 4	15070 AUD pp
Prestige Stateroom - Deck 5	15680 AUD pp
Prestige Stateroom - Deck 6	16410 AUD pp
Deluxe Suite	21790 AUD pp
Prestige Suite - Deck 5	28530 AUD pp
Privilege Suite	29870 AUD pp
Grand Deluxe Suite	33920 AUD pp
Grand Privilege Suite	39670 AUD pp
Owner's suite	59150 AUD pp

Wild Earth Travel

Small Ships, Big Adventures

wildearth-travel.com

info@wildearth-travel.com

PRICING

04-Jul-2026 to 11-Jul-2026

Superior Stateroom	12980 AUD pp
DeLuxe Stateroom	13840 AUD pp
Prestige Stateroom - Deck 4	15070 AUD pp
Prestige Stateroom - Deck 5	15680 AUD pp
Prestige Stateroom - Deck 6	16410 AUD pp
Deluxe Suite	21790 AUD pp
Prestige Suite - Deck 5	28530 AUD pp
Privilege Suite	29870 AUD pp
Grand Deluxe Suite	33920 AUD pp
Grand Privilege Suite	39670 AUD pp
Owner's suite	59150 AUD pp

Superior Stateroom	13680 AUD pp
DeLuxe Stateroom	14600 AUD pp
Prestige Stateroom - Deck 4	15910 AUD pp
Prestige Stateroom - Deck 5	16570 AUD pp
Prestige Stateroom - Deck 6	17350 AUD pp
Deluxe Suite	23120 AUD pp
Prestige Suite - Deck 5	30340 AUD pp
Privilege Suite	31780 AUD pp
Grand Deluxe Suite	36110 AUD pp
Grand Privilege Suite	42280 AUD pp
Owner's suite	59150 AUD pp

11-Jul-2026 to 18-Jul-2026

Superior Stateroom	13680 AUD pp
DeLuxe Stateroom	14600 AUD pp
Prestige Stateroom - Deck 4	15910 AUD pp
Prestige Stateroom - Deck 5	16570 AUD pp
Prestige Stateroom - Deck 6	17350 AUD pp
Deluxe Suite	23120 AUD pp
Prestige Suite - Deck 5	30340 AUD pp
Privilege Suite	31780 AUD pp
Grand Deluxe Suite	36110 AUD pp
Grand Privilege Suite	42280 AUD pp
Owner's suite	59150 AUD pp

18-Jul-2026 to 25-Jul-2026



0800 945 3327 (within New Zealand) | +64 (0) 3 365 1355 | 1800 107 715 (within Australia)

info@wildearth-travel.com | wildearth-travel.com



Wild Earth Travel

Small Ships, Big Adventures



wildearth-travel.com

info@wildearth-travel.com

PRICING

25-Jul-2026 to 01-Aug-2026

Superior Stateroom	13680 AUD pp
DeLuxe Stateroom	14600 AUD pp
Prestige Stateroom - Deck 4	15910 AUD pp
Prestige Stateroom - Deck 5	16570 AUD pp
Prestige Stateroom - Deck 6	17350 AUD pp
Deluxe Suite	23120 AUD pp
Prestige Suite - Deck 5	30340 AUD pp
Privilege Suite	31780 AUD pp
Grand Deluxe Suite	36110 AUD pp
Grand Privilege Suite	42280 AUD pp
Owner's suite	59150 AUD pp

ADDITIONAL CHARGES:

Port Taxes & Fees 520 AUD pp



Wild Earth Travel
Small Ships, Big Adventures

0800 945 3327 (within New Zealand) | +64 (0) 3 365 1355 | **1800 107 715** (within Australia)

info@wildearth-travel.com | **wildearth-travel.com**



SPECIAL OFFERS

Online prices reflect the current brochure fare savings of up to 30%. Prices may change based on demand. Terms and conditions apply. This special offer is subject to availability. Please contact us for more details.