

Wild Earth Travel

Small Ships, Big Adventures

wildearth-travel.com

info@wildearth-travel.com

FROM FIJI TO MICRONESIA LUXURY SOUTH PACIFIC CRUISE

Embark with PONANT on a 16-day expedition cruise to the heart of remote islands in the Pacific. Aboard Le Soleal, you will embark upon a route taking you from Fiji to Guam, discovering the very rich local cultures and exceptional underwater life.

From Lautoka, Le Soleal will first take you to Vanuatu, considered by some as the "happiest country in the world". Espiritu Santo, the archipelago's main island, promises you an unforgettable aquatic experience in an idyllic setting.

You will then set sail for the Solomon Islands where you will have the opportunity to witness traditional culture as well as enjoy stunning white-sand beaches with swimming and snorkelling.

After a port of call in Papua New Guinea, the mysteries of Micronesia will reveal themselves to you. A scattering of islands and atolls, lost in the heart of the northern Pacific, this area is rich in Second World War history. The shores of Chuuk Lagoon and Pulap Island still retain traces of a tragic past and a declared Underwater Military Museum is the resting place of wrecks from Japan's military air and sea fleets.

Micronesia consists of a sprinkling of islands and atolls that benefit from an exceptional environment. The atoll of Gaferut offer incredibly rich underwater scenery that promises unforgettable dives while, on land, Lamotrek Island has white sandy beaches and coconut trees, and villages that exude deep-rooted traditions.

Your cruise will end in Guam, the biggest volcanic island of the Mariana Islands.



na Islands.

ITINERARY

Day 1 Lautoka, Viti Levu Island

Lautoka is the second largest city of Fiji. Located on the western side of the island of Viti Levu, 24 kilometres north of Nadi. Lying in the heart of Fiji's sugar cane growing region, it is known as the Sugar City. Lautoka is the gateway to Fiji's "Sun coast" a land of abundant sunshine, azure skies and dramatic

Wild Earth Travel

Small Ships, Big Adventures

0800 945 3327 (within New Zealand) | +64 (0) 3 365 1355 | **1800 107 715** (within Australia)

info@wildearth-travel.com | **wildearth-travel.com**

Wild Earth Travel

Small Ships, Big Adventures



wildearth-travel.com

info@wildearth-travel.com

grass-covered peaks chequered with sugar-cane fields, rural villages and quaint market towns.

Day 2 At sea

During your journey at sea, make the most of the many services and activities on board. Treat yourself to a moment of relaxation in the spa or stay in shape in the fitness centre. Depending on the season, let yourself be tempted by the swimming pool or a spot of sunbathing. This journey without a port of call will also be an opportunity to enjoy the conferences or shows proposed on board, depending on the activities offered, or to do some shopping in the boutique or to meet the PONANT photographers in their dedicated space. As for lovers of the open sea, they will be able to visit the ship's upper deck to admire the spectacle of the waves and perhaps be lucky enough to observe marine species. A truly enchanted interlude, combining comfort, rest and entertainment.

Day 3 Ambrym Island

The island of Ambrym in Vanuatu is often referred to as the "black" island due to its volcanic ash and because of its 'black magic' steeped in mystery. In the villages, the ancient customs play a significant part in day to day living. The "Man blong Majik" are treated with the utmost respect and practice sorcery and magic beyond all imaginings. Ambrym prides itself on some unique characteristics, such as the magnificent tam-tams (or slit gongs) sculpted out of tree trunks, sand-drawing, black-fern masks and local dances. The most striking custom dance is the Rom (or masked) dance - where 9 foot covertly cloaked and masked 'spirits' stomp out ancient rhythms to the beat of the tam tam.

Day 4 Espiritu Santo Island

At the end of the world, in the north of New Caledonia, lies Vanuatu, a little archipelago that subsists mainly from fishing and farming. It is composed of several islands, Espiritu Santo being the largest and one of the most beautiful. You can meet the people here who are very welcoming and who live in harmony with nature. Plus you will see unimaginable landscapes formed of volcanic rocks, as well as sandy beaches and lagoons beckoning you to dive into their of turquoise waters. You will be surprised to find, in the middle of dense vegetation, brackish water with an amazing ecosystem called "blue

holes". If paradise exists, it must be here.

Day 5 At sea

During your journey at sea, make the most of the many services and activities on board. Treat yourself to a moment of relaxation in the spa or stay in shape in the fitness centre. Depending on the season, let yourself be tempted by the swimming pool or a spot of sunbathing. This journey without a port of call will also be an opportunity to enjoy the conferences or shows proposed on board, depending on the activities offered, or to do some shopping in the boutique or to meet the PONANT photographers in their dedicated space. As for lovers of the open sea, they will be able to visit the ship's upper deck to admire the spectacle of the waves and perhaps be lucky enough to observe marine species. A truly enchanted interlude, combining comfort, rest and entertainment.

Day 6 Santa Ana Island

Owaraha (formerly Santa Ana) is located at the eastern end of Makira (San Cristobal) and just north of the smaller Owariki (Santa Catalina). Our ship will navigate through the picturesque channel separating the Islands before dropping anchor just outside Port Mary. The islanders are well known for preserving ancient traditions and producing intricate wooden carvings. Their artefacts include magnificently carved fishing floats and ceremonial bowls intricately inlaid with shells. After a short zodiac ride ashore you will be guided through the village to an open area to witness a number of traditional performances. Afterwards experience life in a traditional Solomon Island village or take a swim in the warm tropical waters of Port Mary.

Day 7 Honiara, Guadalcanal Island

Honiara is the capital city of The Solomon Islands, administered as a provincial town on the north-western coast of Guadalcanal Island. Honiara comes from the local Ghari Language "naho-ni-ara" meaning 'facing the ara', the place where the southeast winds meet the land. Discover this city, its beautiful landscape, and the significant role it played in World War II. Particularly The Battle of Henderson Field, the last of the three major land offensives conducted by the Japanese in 1942.

Day 8 At sea

Wild Earth Travel

Small Ships, Big Adventures

0800 945 3327 (within New Zealand) | +64 (0) 3 365 1355 | **1800 107 715** (within Australia)

info@wildearth-travel.com | **wildearth-travel.com**

Wild Earth Travel

Small Ships, Big Adventures



wildearth-travel.com

info@wildearth-travel.com

Day 12 Chuuk (ex Truk)

During your journey at sea, make the most of the many services and activities on board. Treat yourself to a moment of relaxation in the spa or stay in shape in the fitness centre. Depending on the season, let yourself be tempted by the swimming pool or a spot of sunbathing. This journey without a port of call will also be an opportunity to enjoy the conferences or shows proposed on board, depending on the activities offered, or to do some shopping in the boutique or to meet the PONANT photographers in their dedicated space. As for lovers of the open sea, they will be able to visit the ship's upper deck to admire the spectacle of the waves and perhaps be lucky enough to observe marine species. A truly enchanted interlude, combining comfort, rest and entertainment.

Chuuk Lagoon, previously known as Truk Lagoon, is one of the four states of the Federated States of Micronesia. The 16 much-eroded volcanic islands within the lagoon have mangrove swamps along their coasts with rich rainforests in the central mountainous areas. The islands are hugely popular with scuba divers thanks to the incredibly interesting shipwrecks: at depths of 15 to 40 metres, divers can explore a veritable underwater museum of wrecks from the Japanese land-based, aerial and naval fleet bombarded by the Americans in February 1944 in retaliation for the attack on Pearl Harbour. These shipwrecks have become foundations for new reef growth and extraordinary marine fauna.

Day 13 Pulpap Island

Set at the eastern end of the island of New Britain, the tropical port town of Rabaul has always been famous for its spectacular setting. Nestled beside Simpson Harbour, the township is surrounded by six volcanoes, one of which, Mt Tavurvur, is still active today. The most recent major volcanic eruption was in September 1994 when Tavurvur and Vulcan covered much of Rabaul and surrounding villages with volcanic ash. This eruption saw the growth of the nearby coastal town of Kokopo which has now become the administrative and tourism centre for Rabaul.

Join your expedition team for a tour by local transport to see Mt Tavurvur, the Volcano Observatory and various significant sites from World War II.

Pulpap is an atoll consisting of three islands located in the Pattiw group in the Caroline Islands. The three islands are, Pollap in the north, Tamatam in the south, and Fanadik at the western fringe of the reef. The island is surrounded by a number of ghostly shipwrecks that are virtually intact, submerged underwater. This makes for great diving expeditions where you can explore the reef and its incredible marine life as well as the shipwrecks.

Day 14 Lamotrek Atoll

Days 10 - 11 At sea

During your journey at sea, make the most of the many services and activities on board. Treat yourself to a moment of relaxation in the spa or stay in shape in the fitness centre. Depending on the season, let yourself be tempted by the swimming pool or a spot of sunbathing. This journey without a port of call will also be an opportunity to enjoy the conferences or shows proposed on board, depending on the activities offered, or to do some shopping in the boutique or to meet the PONANT photographers in their dedicated space. As for lovers of the open sea, they will be able to visit the ship's upper deck to admire the spectacle of the waves and perhaps be lucky enough to observe marine species. A truly enchanted interlude, combining comfort, rest and entertainment.

Like a green piece of confetti floating in the middle of the Northern Pacific, the coral atoll of Lamotrek will appear before you like a dazzling gem set in a remarkable and stunning showcase. Belonging to the vast archipelago of the Caroline Islands, this small slice of paradise and its charming neighbours are home to one of the widest varieties of coral and tropical fish species in the world, making it an idyllic destination for marine life enthusiasts. Beyond the stretches of immaculate, white-sand beach, the dream continues. Off in the distance can be heard the captivating sounds of traditional songs sung by some 300 islanders who still live here, resonating in this unparalleled natural environment blending unspoiled vegetation and vast, heavenly ribbons of sand.

Day 15 Gaferut Atoll

Wild Earth Travel

Small Ships, Big Adventures

0800 945 3327 (within New Zealand) | +64 (0) 3 365 1355 | **1800 107 715** (within Australia)

info@wildearth-travel.com | **wildearth-travel.com**



Wild Earth Travel

Small Ships, Big Adventures



wildearth-travel.com

info@wildearth-travel.com

Gaferut Atoll is an outlying atoll in the State of Yap in the Federated States of Micronesia. The tiny island is mostly defined by densely covered rolling hills which are lusciously covered with vegetation. Mangrove swamps line the vast majority of the shore with an outer barrier reef, rich in marine wildlife surrounding the island. There is an enclosed lagoon which too is brimming with a diverse selection of marine wildlife.

Day 16 Guam

In the Western Pacific, you will call at Guam, the largest volcanic island of Micronesia and the Mariana Islands. Here, the crystal-clear waters and white sandy beaches create a picture-postcard setting, ideal for relaxation and a break from it all. This little-known island, today under the administration of the United States, also offers you the opportunity to visit a number of historical sites, vestiges of Spanish colonisation, and to discover the culture of the Chamorros, the first inhabitants of the islands, talented craftspeople who have preserved their traditions.

Please note:

Itineraries are subject to change.



Wild Earth Travel

Small Ships, Big Adventures

0800 945 3327 (within New Zealand) | +64 (0) 3 365 1355 | **1800 107 715** (within Australia)

info@wildearth-travel.com | **wildearth-travel.com**

Wild Earth Travel

Small Ships, Big Adventures

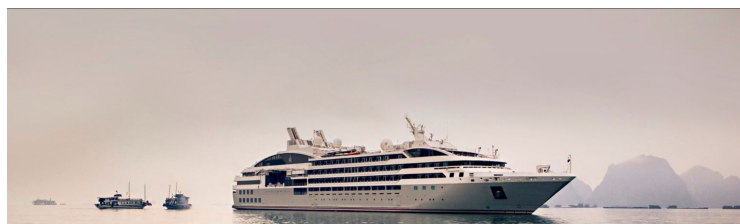


wildearth-travel.com

info@wildearth-travel.com

YOUR SHIP: LE SOLEAL

YOUR SHIP:	Le Soleal
VESSEL TYPE:	Luxury Small Ship
LENGTH:	142 metres
PASSENGER CAPACITY:	264
BUILT/REFURBISHED:	2013



Sailing under the French flag, this magnificent yacht of only 132 staterooms and suites, with balconies, joined in 2013. You will be enchanted by the contemporary decor inspired by the luxury yachting world, with fluid lines and a modern colour scheme combining natural wood with shades of grey and white.

A refined ambience is enhanced by the quality of the workmanship and materials: white Corian counters in the lobby contrast with the warmth of leather to recall a boat's hull, while the central sculpture of enamelled pieces takes its inspiration from the sea. In the loungebar, the carpet picks up a tennis stripe theme symbolising a certain idea of cruising, one synonymous with French elegance and a chic seaside spirit.

Wild Earth Travel
Small Ships, Big Adventures

0800 945 3327 (within New Zealand) | +64 (0) 3 365 1355 | **1800 107 715** (within Australia)

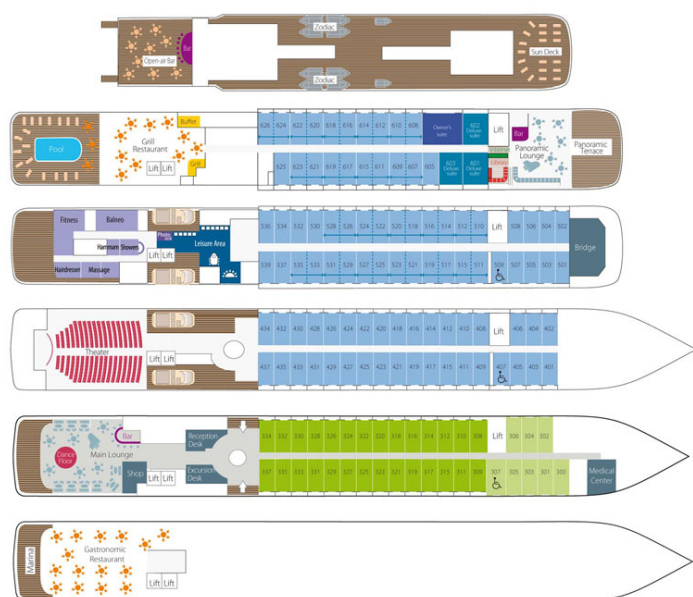
info@wildearth-travel.com | **wildearth-travel.com**



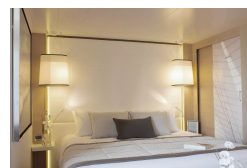
wildearth-travel.com

info@wildearth-travel.com

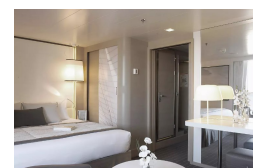
INSIDE YOUR SHIP



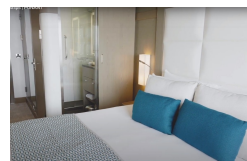
Deluxe Stateroom



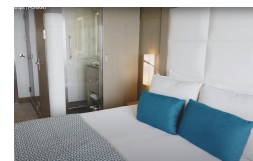
Deluxe Suite



Prestige Deck 4



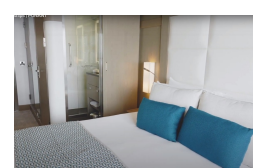
Prestige Deck 5



Prestige Deck 5 Suite



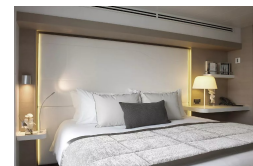
Prestige Deck 6



Prestige Deck 6 Suite



Superior Stateroom





Wild Earth Travel

Small Ships, Big Adventures



wildearth-travel.com

info@wildearth-travel.com

PRICING

23-Feb-2026 to 11-Mar-2026

Superior Stateroom	13350 AUD pp
Deluxe Stateroom	14460 AUD pp
Prestige Deck 4	16050 AUD pp
Prestige Deck 5	16840 AUD pp
Prestige Deck 6	17800 AUD pp
Deluxe Suite	24810 AUD pp
Prestige Deck 5 Suite	33540 AUD pp
Prestige Deck 6 Suite	35300 AUD pp

ADDITIONAL CHARGES:

Port Taxes 1110 AUD pp



Wild Earth Travel
Small Ships, Big Adventures

0800 945 3327 (within New Zealand) | +64 (0) 3 365 1355 | **1800 107 715** (within Australia)

info@wildearth-travel.com | **wildearth-travel.com**



Wild Earth Travel

Small Ships, Big Adventures



wildearth-travel.com

info@wildearth-travel.com

SPECIAL OFFERS

Online prices reflect the current brochure fare savings of up to 30%. Prices may change based on demand. Terms and conditions apply. This special offer is subject to availability. Please contact us for more details.

Wild Earth Travel

Small Ships, Big Adventures

0800 945 3327 (within New Zealand) | +64 (0) 3 365 1355 | **1800 107 715** (within Australia)

info@wildearth-travel.com | **wildearth-travel.com**