



Wild Earth Travel

Small Ships, Big Adventures

wildearth-travel.com

info@wildearth-travel.com

FROM ISLAND TO ISLAND, BETWEEN FADO AND CONCERTOS - CANARIES & PORTUGAL IN LUXURY

In partnership with RADIO CLASSIQUE and with featured guest Alain Duault.

From the volcanic archipelagos of the Canaries and Madeira to the southern tip of Portugal, PONANT invites you on an unforgettable 11-day interlude, between Las Palmas and Lisbon. This journey aboard Le Boreal will take you into the heart of uniquely and wildly beautiful landscapes, featuring majestic volcanos, lush green valleys, isolated inlets, verdant cliffs and historic cities with multiple sources of heritage.

Throughout your journey, you will benefit from an excursion included per person per port of call, to choose from a selection offered by PONANT. During this cruise, admire the volcanic and verdant landscapes of Santa Cruz de La Palma, explore the Garajonay National Park, a UNESCO World Heritage Site, from La Gomera, or discover the oldest banana plantation in Santa Cruz de Tenerife. The diversity of experiences on offer promises you intense and varied moments (to discover the full range of excursions, go to the itinerary tab).

Your cruise will start on the island of Gran Canaria in Las Palmas, then your ship will take to the sea, sailing west to reach Santa Cruz de Tenerife. In these lands of a thousand contrasts, dominated by the emblematic silhouette of the Teide stratovolcano, discover the unique and fascinating landscapes found in the UNESCO World Heritage Site of Teide National Park.

Le Boreal will then drop anchor at La Gomera. This tiny island

Wild Earth Travel

Small Ships, Big Adventures

0800 945 3327 (within New Zealand) | +64 (0) 3 365 1355 | **1800 107 715** (within Australia)

info@wildearth-travel.com | **wildearth-travel.com**

Wild Earth Travel

Small Ships, Big Adventures

wildearth-travel.com

info@wildearth-travel.com

with lush vegetation is a UNESCO World Heritage Site due to its biosphere reserve. This island is also renowned for its whistling language, Silbo, that the inhabitants use to communicate from one valley to another.

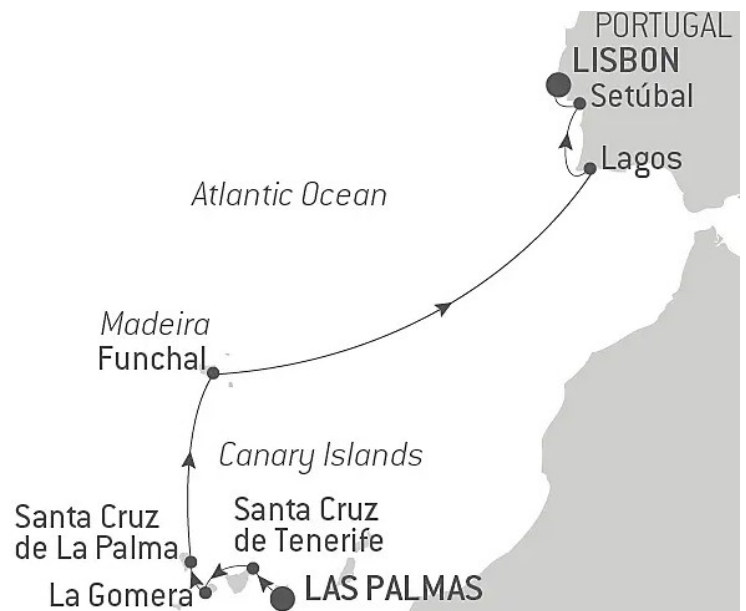
Next, Santa Cruz de La Palma will invite you to spend a moment suspended in time. Here, the accent is on authenticity and tranquillity as you succumb to the charms of its unspoilt nature and its unusual architectural heritage featuring traditional Canarian houses with brightly-coloured wooden balconies, sumptuous palaces, and religious buildings.

Your ship will then set a course northward to carry you to Madeira, a paradise for hiking enthusiasts. On this steep island covered in luxuriant vegetation, the variety of landscapes, including sheer cliffs, levadas (Madeiran aqueducts), banana plantations, and the laurel forest - Laurisilva - listed with UNESCO, never ceases to amaze visitors.

Your exploration will continue in the Algarve region at the country's southern tip. Bewitching Lagos stands proud like a fortress in hues of ochre and orange, bordered by the turquoise waters of the Atlantic Ocean. In this town of nature and culture, stroll in the paved small streets of the historic centre whose Moorish and Portuguese influences create a delightful blend.

Further north, you will head towards the surprising and picturesque mediaeval city of Setubal. Surrounded by vast parks and nature reserves featuring abundant biodiversity, between the Sado Estuary and the Serra da Arrabida whose waters shelter many dolphins, you will also fall under the charm of the historic heritage of this authentic fishing town.

Your cruise will come to an end in Lisbon, sitting on the Tagus River, distilling its one-of-a-kind charm imbued with rich history.



ch history.

ITINERARY

Day 1 LAS PALMAS DE GRAN CANARIA, CANARY ISLANDS

A stopover of sunny climes, Las Palmas is located on the north-east coast of Gran Canaria. A few streets away from Puerto de la Luz port, you'll discover the vast Las Canteras beach, bordered with the town's characteristic palms. You'll find these palms are all over Las Palmas, in the streets and squares, especially on the plaza de Santa Ana in the heart of the historical district. It feels like you've travelled back in time here, as you stand looking at the tall

Wild Earth Travel

Small Ships, Big Adventures

0800 945 3327 (within New Zealand) | +64 (0) 3 365 1355 | **1800 107 715** (within Australia)

info@wildearth-travel.com | **wildearth-travel.com**



Wild Earth Travel

Small Ships, Big Adventures

wildearth-travel.com

info@wildearth-travel.com

houses beside the Santa Ana cathedral. Very close by, you can visit the Casa de Colon, a museum dedicated to the famous explorer. The museum is housed in the palace belonging to the island's former governor. Chances are, you'll be drawn to the covered Vegueta market to partake in some daily life along with the locals and taste some unfamiliar dishes.

Day 2 SANTA CRUZ DE TENERIFE, CANARY ISLANDS

The capital city of Tenerife is located on the north-east coast of the island. Close to the port is the monumental Plaza de España, bedecked with a fountain and plant sculptures. Around the plaza, you can admire the white marble Triunfo de la Candelaria obelisk, the historic casino of Santa Cruz and the majestic Guimera theatre. Not far from here, the picturesque Iglesia de la Concepcion church features the characteristic traits of Canaries architecture.

Day 3 SAN SEBASTIAN DE LA GOMERA, CANARY ISLANDS

La Gomera rises from the water like a mirage. This volcanic island in the Canaries features jagged cliffs, valleys covered in palm trees, and beaches of black sand bathing in crystal-clear waters. But its greatest treasure lies at its heart: an exceptional laurisilva, a laurel forest whose prehistoric vegetation has been preserved thanks to the microclimate on the island. This unique ecosystem, common a few million years ago in the tropics, forms the Garajonay National Park, listed as a UNESCO World Heritage Site. Like the birds, the Guanches contribute to the poetry of the island too, with their whistled language called Silbo. This magical-sounding, melodious language is also listed as World Heritage by UNESCO.

Day 4 SANTA CRUZ DE LA PALMA, CANARY ISLANDS

The capital of the island of Palma, Santa Cruz de la Palma is the pearl of the Canaries. Founded in 1493 by the conquistador Alonso Fernandez de Lugo, the city has preserved a large and atypical architectural heritage from its colonial past, with its traditional Canarian houses adorned with brightly

coloured wooden balconies, its cobbled streets, its sumptuous palaces and its numerous religious buildings. The Santa Catalina Castle is the symbol of the city. This 16th century military fortification helped defend the city from repeated attacks by French privateers.

Days 5 - 6 FUNCHAL, MADEIRA

This attractive capital of Madeira is located on the southern coast of the island. The walkways of the old town are lined with azulejos, or multi-coloured mosaics. If you follow these patterns, they'll lead you to the appetising Mercado dos Lavradores market stands, the Frederico de Freitas museum, and the golden panelling of the Cathedral de la Se. Along the waterfront, the palm tree-shaded promenade leads you to the telefericos de Monte, Madeira's cable cars. Its panoramic cabins transport you over the city to top of Monte, where you can see the picturesque botanical garden.

Day 7 AT SEA

During your journey at sea, make the most of the many services and activities on board. Treat yourself to a moment of relaxation in the spa or stay in shape in the fitness centre. Depending on the season, let yourself be tempted by the swimming pool or a spot of sunbathing. This journey without a port of call will also be an opportunity to enjoy the conferences or shows proposed on board, depending on the activities offered, or to do some shopping in the boutique or to meet the PONANT photographers in their dedicated space. As for lovers of the open sea, they will be able to visit the ship's upper deck to admire the spectacle of the waves and perhaps be lucky enough to observe marine species. A truly enchanted interlude, combining comfort, rest and entertainment.

Day 8 LAGOS

There stands a natural paradise called Lagos, bordered by the Atlantic Ocean, in the Algarve region of southern Portugal. With its picturesque and age-old

Wild Earth Travel

Small Ships, Big Adventures

0800 945 3327 (within New Zealand) | +64 (0) 3 365 1355 | **1800 107 715** (within Australia)

info@wildearth-travel.com | wildearth-travel.com



Wild Earth Travel

Small Ships, Big Adventures

wildearth-travel.com

info@wildearth-travel.com

town centre, and the Ponta da Piedade natural site sheltering paradisiacal beaches protected by captivating limestone cliffs in hues of ochre, Lagos enthralls, fascinates and enchants. In this interesting blend between nature and culture, do not miss the chance to stroll along the small paved streets of its historic centre, surrounded by impressive Moorish ramparts and edged with traditional white houses, with decorations sculpted in the stone. In particular, you will be able to admire the Manuelian-style Governor's Castle, the 17th-century Ponta da Bandeira Fort or the Church of Santo Antonio in Baroque architecture.

Day 9 SETÚBAL

A few kilometres south of Lisbon, Setubal, one of Portugal's most important fishing ports, enjoys an exceptional geographical location. The city is surrounded by vast parks and nature reserves that protect the biodiversity of the Sado estuary and the Arrabida serra. Don't miss the possibility to discover the magnificent wild and unspoilt expanses that border the peninsula and the estuary, whose waters are home to many dolphins, which can easily be observed.

Days 10 - 11 LISBON

Portugal's capital city located on the banks of the Tagus, only a few kilometres from the Atlantic coast, is a city of exceptionally rich cultural diversity. At the mouth of the river harbour, impose two UNESCO World Heritage monuments, Jeronimos monastery and Belem tower. The Alfama hillside is also worth visiting: known for its fado bars and its Moorish streets, this district is the oldest one of the city and one of the most typical. Not far from there, Chiado's elegant streets are home to big fashion labels and are an invitation to a bit of luxury shopping.

Please note:

Itineraries are subject to change.

Wild Earth Travel

Small Ships, Big Adventures

0800 945 3327 (within New Zealand) | +64 (0) 3 365 1355 | **1800 107 715** (within Australia)

info@wildearth-travel.com | **wildearth-travel.com**



Wild Earth Travel

Small Ships, Big Adventures

wildearth-travel.com

info@wildearth-travel.com

YOUR SHIP: LE BOREAL

YOUR SHIP:	Le Boreal
VESSEL TYPE:	Luxury Expedition / Cruise Ship
LENGTH:	142 meters
	264 (in twin cabins, 200 in
PASSENGER CAPACITY:	Antarctica)
BUILT/REFURBISHED:	2011

A superb mega-yacht with 132 cabins, she is the fruit of the expertise of the Italian Fincantieri shipyard and French sophistication, as interpreted by designer Jean-Philippe Nuel. Le Boreal remains faithful to our philosophy - to create a unique atmosphere, a subtle blend of luxury, intimacy and well-being. Superior materials, discreet elegance and a tasteful decor combined with exterior and interior lines to reflect a nautical mood, subtly revisited. On board, soothing neutral tones are enlivened by splashes of red, our signature theme linking tradition and innovation to create personal touches in the spirit of a "private yacht".

Cuisine

Loyal to the great French tradition, the haute cuisine on board is worthy of the finest restaurants, where discreet, attentive service is the hallmark.

Our two restaurants welcome you for breakfasts, lunch and dinner. The Gastronomic Restaurant, with a capacity of 268 persons, is situated on Le Liberte Deck and serves you French and international cuisine accompagnied by fine wine. On the Grill Restaurant, you will have the opportunity to eat outside

and enjoy buffet lunch and themed dinner.

Life On Board

Whether you want to join other guests in the theatre or games area (Wii™ consoles, etc), or relax on your own in a quiet corner of the library, Le Boreal has been designed to meet the needs of every guest.

Everything has been done to preserve the independence of each guest to suit their personal tastes: lounges for lectures and shows, a spa in partnership with Carita™, but also more intimate spaces such as the library and internet corner. Comfortable cabins, nearly all with private balcony, are available for families either as triples or as communicating cabins. There is also a games area with Wii™ consoles, children's menus, and a baby-sitting service. Just as if you were on a private yacht, your time is your own to do as you please.

Fitted with the latest equipment (Kinesis Wall, running machine) and in partnership with the famous Carita™ brand, the Beauty Centre on Le Boreal welcomes you for some unforgettable moments of relaxation and pampering (beauty treatments, hairdresser, hammam, balneotherapy).

Wild Earth Travel

Small Ships, Big Adventures

0800 945 3327 (within New Zealand) | +64 (0) 3 365 1355 | **1800 107 715** (within Australia)

info@wildearth-travel.com | **wildearth-travel.com**



Wild Earth Travel

Small Ships, Big Adventures

wildearth-travel.com

info@wildearth-travel.com



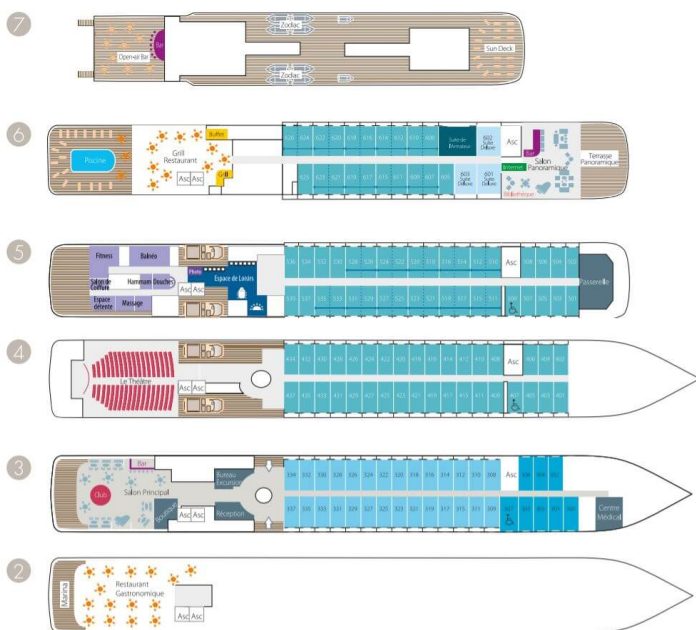
eotherapy).

Wild Earth Travel
Small Ships, Big Adventures

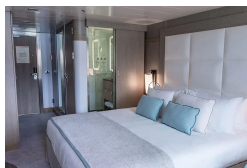
0800 945 3327 (within New Zealand) | +64 (0) 3 365 1355 | **1800 107 715** (within Australia)

info@wildearth-travel.com | **wildearth-travel.com**

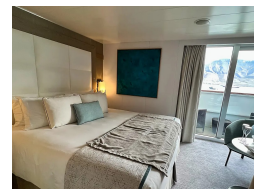
INSIDE YOUR SHIP



DeLuxe Stateroom



Deluxe Suite



Owner's suite



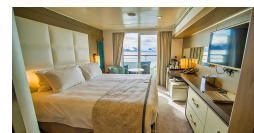
Prestige Stateroom - Deck 4



Prestige Stateroom - Deck 5



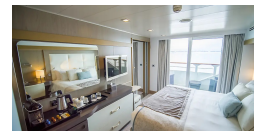
Prestige Stateroom - Deck 6



Prestige Suite - Deck 5



Prestige Suite - Deck 6





Wild Earth Travel

Small Ships, Big Adventures

wildearth-travel.com

info@wildearth-travel.com

PRICING

23-Apr-2025 to 03-May-2025

Superior Stateroom	8860 AUD pp
DeLuxe Stateroom	9550 AUD pp
Prestige Stateroom - Deck 4	10060 AUD pp
Prestige Stateroom - Deck 5	10360 AUD pp
Prestige Stateroom - Deck 6	10760 AUD pp
Deluxe Suite	14450 AUD pp
Prestige Suite - Deck 5	15540 AUD pp
Prestige Suite - Deck 6	16030 AUD pp
Owner's suite	20110 AUD pp

ADDITIONAL CHARGES:

Port Taxes 740 AUD pp



Wild Earth Travel
Small Ships, Big Adventures

0800 945 3327 (within New Zealand) | +64 (0) 3 365 1355 | **1800 107 715** (within Australia)

info@wildearth-travel.com | **wildearth-travel.com**



Wild Earth Travel

Small Ships, Big Adventures

wildearth-travel.com

info@wildearth-travel.com

SPECIAL OFFERS

Online prices reflect the current brochure fare savings of up to 30%. Prices may change based on demand. Terms and conditions apply. This special offer is subject to availability. Please contact us for more details.

Wild Earth Travel

Small Ships, Big Adventures

0800 945 3327 (within New Zealand) | +64 (0) 3 365 1355 | **1800 107 715** (within Australia)

info@wildearth-travel.com | **wildearth-travel.com**