

# Wild Earth Travel

*Small Ships, Big Adventures*

[wildearth-travel.com](http://wildearth-travel.com)

[info@wildearth-travel.com](mailto:info@wildearth-travel.com)

## FRONTIER LANDS OF PAPUA NEW GUINEA - FROM CAIRNS TO MADANG CRUISE

Departing from either Cairns or Madang, this voyage is an opportunity to immerse into the wild and rugged scenery of Papua New Guinea that is rarely seen and mostly inaccessible by land. Papua New Guinea is home to the largest area of intact rainforest outside of the Amazon. This voyage uncovers little-visited islands, volcanic mountains and pristine rainforest wilderness areas forged by mighty rivers. Sail past spectacular Kadovar Islands, known for its volcanic activity. Venture up the mighty Sepik River to see riverfront village life little changed in hundreds of years. Buy traditional crafts such as masks and carvings at the village market of Bien. Snorkel, swim or dive on vibrant reefs at the Fly Islands and visit the unique Bubbling Springs Reef at Dobu.



### ITINERARY

#### DAY 1: DEPART CAIRNS / MADANG

**Embark Cairns:** Arrive at Trinity Wharf (berth to be advised) for boarding at 7:30am for a 9:00am departure. Cruise across the Coral Sea and spend the afternoon relaxing as you are welcomed onboard Coral Adventurer. Join our expedition staff as they introduce you to the journey and the many experiences you will enjoy. This evening, join the Captain's welcome drinks and meet your crew and fellow guests as the sun sets.

**Embark Madang:** Make your own way to the Cairns International Airport for check-in and charter briefing at 7:30am before joining the charter flight departing 10:30am. After the charter flight guests will be transferred from Madang Airport to Madang Resort. Light finger food and refreshments provided. There will be time to visit markets along the waterfront outside the resort before a transfer to join the ship at 4:00pm before a 5:00pm departure. This evening, join the Captain's welcome drinks and meet your crew and fellow guests as the sun sets.

### AT SEA

Spend today relaxing onboard, listen and learn from our Guest Lecturer

Wild Earth Travel

*Small Ships, Big Adventures*

0800 945 3327 (within New Zealand) | +64 (0) 3 365 1355 | 1800 107 715 (within Australia)

[info@wildearth-travel.com](mailto:info@wildearth-travel.com) | [wildearth-travel.com](http://wildearth-travel.com)

# Wild Earth Travel

*Small Ships, Big Adventures*



[wildearth-travel.com](http://wildearth-travel.com)

[info@wildearth-travel.com](mailto:info@wildearth-travel.com)

presentations, or enjoy an engine room or bridge tour.

## SAMARAI ISLAND, PAPUA NEW GUINEA

Located off the south-eastern tip of New Guinea in the China Strait, choose to explore the colonial settlement of Samarai, with a chance to purchase pearls from a local pearl farmer, or go for a snorkel at nearby Ebuma Island.

## DOBU ISLAND & DEI DEI SPRINGS, PAPUA NEW GUINEA

Join our Expedition Staff on a walk to Dei Dei Hot Springs on Fergusson Island, where the people share their mythical and spiritual tales of these hot water and mud springs located at the base of an extinct volcano. Locals still use the hot springs to cook food in palm frond baskets. Learn of the history of the Kula Ring at Dobu Island and meet the local primary school children, who will welcome us with a traditional song, and spend some time snorkeling in the Bubbling Springs Reef.

## TROBRIAND ISLANDS, PAPUA NEW GUINEA

Historically known as the 'Islands of Love', the Trobriand Islands offer a glimpse of traditional cultures largely unspoiled by outside influence. Be greeted at the small island of Kuiawa with an enthusiastic Trobriand's welcome.

## TUFI FJORD, PAPUA NEW GUINEA

Today enjoy a true highlight as we discover the scenic beauty of the Tufi Fjords. Featuring 25 individual canyons with sheer basalt cliffs, these are the only fjords in Papua New Guinea and offer a wealth of sightseeing opportunities.

Aboard Xplorer, travel to the entrance of one of Tufi's most scenic fjords where you will be met by local villagers in traditional dress aboard outrigger canoes. Have the opportunity to board one of the outriggers as the locals paddle up the creek under the rainforest canopy. Here, spirits and sorcery remain integral to village life, and we will learn about bush medicines, fire making, mat weaving and traditional tattooing. Deep in the rainforest, have the chance to witness the tribesmen perform a traditional sing song in their ceremonial dress. Later, discover white sand beaches, or snorkel or dive over spectacular fringing reefs.

## BUNA & SANANANDA, PAPUA NEW GUINEA

We land at Buna beach, home to some of the toughest fighting in the WWII Pacific campaign. Enjoy a welcome from the local residents, and then be guided through the jungle to visit the areas where Allied forces clashed with Japanese forces. In Sanananda, see the local monuments and pay tribute to fallen Australian soldiers at the war museum, located at the far end of the Kokoda Track. You'll also have the opportunity to visit the lush gardens surrounding the village.

## MOROBE HARBOUR, PAPUA NEW GUINEA

We arrive at Morobe Harbour early in the morning and cruise in the Xplorer to view the stunning forest from the Mou River. We receive a warm Oro Province welcome and enjoy exploring the village with local guides. At high tide, we may be able to cruise further into a picturesque hidden bay.

## KAMIALI (LABABIA VILLAGE) & FLY ISLANDS, PAPUA NEW GUINEA

In the morning, during a relaxing visit to the village, we are entertained with singing and dancing performances and join a local guide around the village. Board an outrigger canoe to explore further up the river with a guide and experience snorkelling and diving at the Biangatu Island reef in the Fly Islands.

Wild Earth Travel

*Small Ships, Big Adventures*

0800 945 3327 (within New Zealand) | +64 (0) 3 365 1355 | 1800 107 715 (within Australia)

[info@wildearth-travel.com](mailto:info@wildearth-travel.com) | [wildearth-travel.com](http://wildearth-travel.com)

# Wild Earth Travel

*Small Ships, Big Adventures*



[wildearth-travel.com](http://wildearth-travel.com)

[info@wildearth-travel.com](mailto:info@wildearth-travel.com)

## DREGERHAFEN, PAPUA NEW GUINEA

At the beautiful anchorage of Dregerhafen, you will enjoy a high-spirited Papua New Guinea welcome and explore the market which is famous for Tami bowls and timber paddles. There are many WWII artefacts in this area. After lunch, enjoy snorkelling, diving, and kayaking in the blue waters of the lagoon.

## KARKAR ISLAND

Visit Busen or Maringis Villages at Karkar Island and enjoy welcome sing sings before touring the copra and cocoa processing areas. In the afternoon there is opportunity to snorkel off the fringing reef and bommies close to shore.

## SEPIK MOUTH, BIEN VILLAGE & KADOVAR VOLCANO, PAPUA NEW GUINEA

As we arrive at the mouth of the famed Sepik River we are greeted with stunning views of the landscape and this mammoth river which cuts a swathe through lush forest. Our first stop on the Sepik River is at the village of Bien, where local villagers greet us on their canoes and follow with dance performances. There is an opportunity to purchase highly sought-after hand-crafted artefacts, masks and carvings at the Sepik market.

## DAY 13: ARRIVE MADANG / CAIRNS

Disembark Madang: Arrive in Madang to disembark Coral Adventurer at 8:00am. Enjoy an included tour of Madang with a member of our expedition team until midday. For those joining our post-cruise charter flight back to Cairns, this will be a direct flight to Cairns, with Coral Expeditions staff member to accompany you.

Disembark Cairns: Disembark Coral Adventurer at 6:30pm in Cairns and bid farewell to new-found friends, the Master and crew. A post cruise transfers to Cairns CBD hotels or the airport is included.

### Please note:

This itinerary is an indication of the destinations we visit and activities on offer. Throughout the expedition we may make changes to the itinerary as necessary to maximise your expeditionary experience. Allowances may be made for seasonal variations, weather, tidal conditions, and any other event that may affect the operation of the vessel. Coral Expeditions suggests that you do not arrive on the day of embarkation or depart on the day of disembarkation due to any changes that may occur in scheduling.

Wild Earth Travel

*Small Ships, Big Adventures*

0800 945 3327 (within New Zealand) | +64 (0) 3 365 1355 | 1800 107 715 (within Australia)

[info@wildearth-travel.com](mailto:info@wildearth-travel.com) | [wildearth-travel.com](http://wildearth-travel.com)

# Wild Earth Travel

*Small Ships, Big Adventures*



[wildearth-travel.com](http://wildearth-travel.com)

[info@wildearth-travel.com](mailto:info@wildearth-travel.com)

## YOUR SHIP: CORAL ADVENTURER

<b>YOUR SHIP:</b>	<b>Coral Adventurer</b>
<b>VESSEL TYPE:</b>	<b>Expedition Ship</b>
<b>LENGTH:</b>	<b>93.4 meters</b>
<b>PASSENGER CAPACITY:</b>	<b>120 (60 staterooms)</b>
<b>BUILT/REFURBISHED:</b>	<b>2019</b>

Designed and built to be the most modern tropical expedition ship afloat, Coral Adventurer debuted in April 2019. She features comfortable Australian interiors, Xplorer tender mechanism, intimate guest experience, and personalized service.

### EXPEDITION CAPABILITIES

- > Two trademark Xplorer tenders seat all passengers for shore excursions
- > Six zodiacs for more intrepid exploration
- > Lecture lounge with multimedia for daily expedition briefings and presentations
- > Small on-board Library
- > Shallow draft and advanced navigation and propulsion systems

### MARINE IMMERSION

- > Navigator lounge in the bridge giving a vantage point of ship operations
- > Over 1000 sq m of open deck space including a wrap-around promenade deck with panoramic views
- > Engine room tours and high level of crew interaction with guests

- > Barralong Room for hosting scientific research or exhibitions

### FOOD AND WINE FEATURES

- > Communal 'wine table'
- > Galley viewing window
- > Multiple indoor and outdoor bars, including our Explorer bar on the Vista Deck
- > Curated wine cellar featuring boutique wines and exceptional vintage Australian reds.

### GUEST COMFORT

- > All outside-facing guest cabins with en-suite bathrooms; majority have private balcony
- > Active stabilisers
- > Gym
- > Passenger elevator
- > Wi-Fi available in all guest areas



guest areas

Wild Earth Travel

*Small Ships, Big Adventures*

0800 945 3327 (within New Zealand) | +64 (0) 3 365 1355 | 1800 107 715 (within Australia)

[info@wildearth-travel.com](mailto:info@wildearth-travel.com) | [wildearth-travel.com](http://wildearth-travel.com)

# Wild Earth Travel

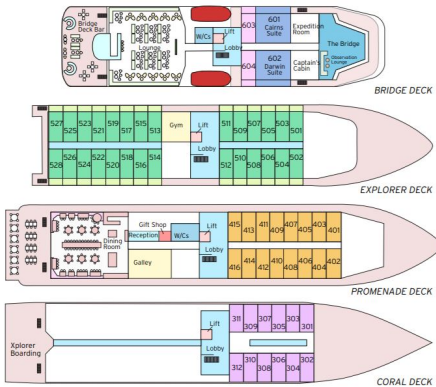
*Small Ships, Big Adventures*



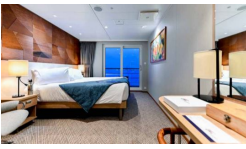
wildearth-travel.com

info@wildearth-travel.com

## INSIDE YOUR SHIP



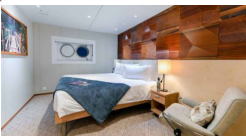
BRIDGE DECK BALCONY STATEROOM



BRIDGE DECK BALCONY SUITE



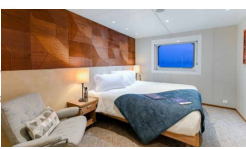
CORAL DECK STATEROOM



EXPLORER DECK BALCONY STATEROOM



PROMENADE DECK STATEROOM



**Name** Coral Adventurer  
**Owners** CPC Marine Pty Ltd  
**Flag** Australian  
**Year of Build** 2019  
**LOA** 93.4 metres  
**Beam** 17.2 metres  
**Draught** 4.5 metres  
**Gross Tonnage** 5599 tonnes  
**Construction** VARD  
**Main Engines** Caterpillar 3512C  
**Azimuth Pod** Rolls Royce Azipull  
**Cruising Speed** 13.8 knots  
**Max. passengers** 120  
**Max. crew** 48  
**Tenders** 2 Xplorers, 6 Zodiacs

- BRIDGE DECK BALCONY SUITE  
• 55.8sqm • Private Balcony • Twin or junior king
- BRIDGE DECK BALCONY STATEROOM  
• 21.4sqm • Private Balcony • Twin or junior king
- EXPLORER DECK BALCONY STATEROOM  
• 21.4sqm • Private Balcony • Twin or junior king
- PROMENADE DECK STATEROOM  
• 17sqm • Picture windows • Twin or junior king
- CORAL DECK STATEROOM  
• 17sqm • Porthole windows • Twin or Junior king

# Wild Earth Travel

*Small Ships, Big Adventures*



[wildearth-travel.com](http://wildearth-travel.com)

[info@wildearth-travel.com](mailto:info@wildearth-travel.com)

## PRICING

### 18-Dec-2025 to 30-Dec-2025

<b>CORAL DECK STATEROOM</b>	<b>13280 AUD pp</b>
<b>PROMENADE DECK STATEROOM</b>	<b>15680 AUD pp</b>
<b>EXPLORER DECK BALCONY STATEROOM</b>	<b>20380 AUD pp</b>
<b>BRIDGE DECK BALCONY STATEROOM</b>	<b>22180 AUD pp</b>
<b>BRIDGE DECK BALCONY SUITE</b>	<b>28180 AUD pp</b>

### 30-Dec-2025 to 11-Jan-2026

<b>CORAL DECK STATEROOM</b>	<b>13280 AUD pp</b>
<b>PROMENADE DECK STATEROOM</b>	<b>15680 AUD pp</b>
<b>EXPLORER DECK BALCONY STATEROOM</b>	<b>20380 AUD pp</b>
<b>BRIDGE DECK BALCONY STATEROOM</b>	<b>22180 AUD pp</b>
<b>BRIDGE DECK BALCONY SUITE</b>	<b>28180 AUD pp</b>

Wild Earth Travel

*Small Ships, Big Adventures*

0800 945 3327 (within New Zealand) | +64 (0) 3 365 1355 | 1800 107 715 (within Australia)

[info@wildearth-travel.com](mailto:info@wildearth-travel.com) | [wildearth-travel.com](http://wildearth-travel.com)