

Wild Earth Travel

Small Ships, Big Adventures

wildearth-travel.com

info@wildearth-travel.com

GALAPAGOS CENTRAL WONDERS CRUISE - C

Embark on a 5-day Galapagos Central Wonders Cruise to explore the stunning islands of the Galapagos Archipelago. Begin your adventure at Bachas Beach, known for its sea turtle nesting grounds. Snorkel with penguins at Bartolome Island and discover volcanic landscapes at Sullivan Bay. Visit the vibrant South Plazas Island, home to unique flora and fauna, and explore Santa Fe Island's marine and terrestrial wildlife. Enjoy beach walks and snorkeling at Witch Hill, and witness diverse bird species at Pitt Point. Conclude your journey with a visit to the lush highlands of San Cristobal Island, where you'll see giant tortoises and endemic birds.



ITINERARY

Day 1 - Saturday PM: Santa Cruz - Bachas Beach

Arrive at Baltra Airport and be greeted by your guide. In the afternoon, visit Bachas Beach, known for its sea turtle nesting grounds and the remnants of WWII barges. Spot flamingoes, herons, and other birds at the lagoons. After your visit, transfer to the airport for your flight back to Ecuador.

Day 2 - Sunday AM: Bartolome Island & PM: Santiago - Sullivan Bay

Wild Earth Travel

Small Ships, Big Adventures

0800 945 3327 (within New Zealand) | +64 (0) 3 365 1355 | **1800 107 715** (within Australia)

info@wildearth-travel.com | **wildearth-travel.com**



Wild Earth Travel

Small Ships, Big Adventures

wildearth-travel.com

info@wildearth-travel.com

Hike to the top of Bartolome Island for stunning views of volcanic landscapes and Pinnacle Rock, and enjoy snorkeling with Galapagos penguins and colorful marine life. In the afternoon, explore the Pahoehoe lava field at Sullivan Bay, where you can snorkel and observe unique volcanic formations and wildlife.

Day 3 - Monday AM: South Plazas Island & PM: Santa Fe Island

Discover South Plazas Island's vibrant flora, including red Sesuvium plants and large land iguanas. Watch seabirds and sea lions along the cliffs. In the afternoon, visit Santa Fe Island to explore its turquoise waters and prickly pear cactus forest, and see the endemic Santa Fe land iguanas and various marine species.

Day 4 - Tuesday AM: Witch Hill & PM: Pitt Point

Start at Witch Hill's white sand beach on San Cristobal Island, perfect for beach walks and snorkeling with sea lions and colorful marine life. In the afternoon, hike at Pitt Point, where you can see all three species of boobies and two frigate bird species, and enjoy snorkeling in the area.

Day 5 - Wednesday AM: San Cristobal Highlands

Explore the lush highlands of San Cristobal Island, observing giant tortoises, endemic birds, and rich plant life. Enjoy panoramic views of the island's diverse landscapes. After your morning exploration, transfer to the airport and reflect on the incredible wildlife and landscapes of your Galapagos adventure.

Please note:

Itineraries are subject to change.



Wild Earth Travel
Small Ships, Big Adventures

0800 945 3327 (within New Zealand) | +64 (0) 3 365 1355 | **1800 107 715** (within Australia)

info@wildearth-travel.com | **wildearth-travel.com**

Wild Earth Travel

Small Ships, Big Adventures

wildearth-travel.com

info@wildearth-travel.com

YOUR SHIP: GALAXY ORION

YOUR SHIP:	Galaxy Orion
VESSEL TYPE:	Motor Yacht
LENGTH:	29.53
PASSENGER CAPACITY:	12
BUILT/REFURBISHED:	2022

The totally 100% renovated exclusive liveaboard will take you to the most incredible locations and allow you to discover the hidden underwater life of the Galapagos Islands. Live a world-class diving experience surrounded by sharks, whales, manta rays, rays, turtles, penguins, iguanas, sea lions and much more, all in one place.

A Rebuilt Atmosphere Redesigned cabins and social areas combined with privacy for those who enjoy adventure and natural harmony.

Once in a Lifetime Trip Experience exceptional scuba diving like no other in the Pacific Ocean only reached on a dive liveaboard
Experience Life Underwater Eco-conscious services and sustainable offerings

Best of Both Worlds As a company born and operated by Galapagueños, our commitment to conserve and have the minimum environment impact possible, becomes one of the most important fact.

Cozy Cabins A lifetime experience in a renewed cozy environment for those who enjoy friends-family adventures.

Facilities Lower beds Endemic local style decoration Functional closets Air conditioned cabins with personal climate control

Reading light and charging ports

Dining Room Broad ocean view windows, to delight the most local and international gastronomy.

Lounge Artistic decoration based on the astonishing array of the Galapagos wildlife, expose by a local artist.

Shaded Deck Ideal for those who love to relax after a perfect day of adventure with splendid oceanic view.

Diving Platform Adapted platform for divers needs.



vers needs.

Wild Earth Travel

Small Ships, Big Adventures

0800 945 3327 (within New Zealand) | +64 (0) 3 365 1355 | **1800 107 715** (within Australia)

info@wildearth-travel.com | **wildearth-travel.com**

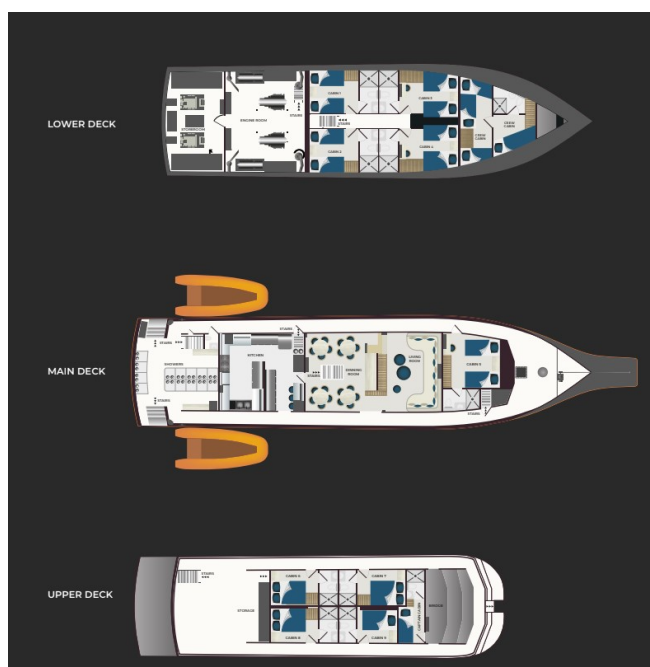
Wild Earth Travel

Small Ships, Big Adventures

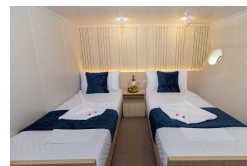
wildearth-travel.com

info@wildearth-travel.com

INSIDE YOUR SHIP



Cabin



Wild Earth Travel

Small Ships, Big Adventures

0800 945 3327 (within New Zealand) | +64 (0) 3 365 1355 | 1800 107 715 (within Australia)

info@wildearth-travel.com | wildearth-travel.com

Wild Earth Travel

Small Ships, Big Adventures

wildearth-travel.com

info@wildearth-travel.com

PRICING

26-Apr-2025 to 30-Apr-2025

Cabin	2400 USD pp
-------	-------------

10-May-2025 to 14-May-2025

Cabin	2400 USD pp
-------	-------------

24-May-2025 to 28-May-2025

Cabin	2400 USD pp
-------	-------------

07-Jun-2025 to 11-Jun-2025

Cabin	2400 USD pp
-------	-------------

21-Jun-2025 to 25-Jun-2025

Cabin	2400 USD pp
-------	-------------

05-Jul-2025 to 09-Jul-2025

Cabin	2400 USD pp
-------	-------------

19-Jul-2025 to 23-Jul-2025

Cabin	2400 USD pp
-------	-------------

02-Aug-2025 to 06-Aug-2025

Cabin	2400 USD pp
-------	-------------

16-Aug-2025 to 20-Aug-2025

Cabin	2400 USD pp
-------	-------------

30-Aug-2025 to 03-Sep-2025

Cabin	2400 USD pp
-------	-------------

13-Sep-2025 to 17-Sep-2025

Cabin	2400 USD pp
-------	-------------

27-Sep-2025 to 01-Oct-2025

Cabin	2400 USD pp
-------	-------------

11-Oct-2025 to 15-Oct-2025

Cabin	2400 USD pp
-------	-------------

25-Oct-2025 to 29-Oct-2025

Cabin	2400 USD pp
-------	-------------

08-Nov-2025 to 12-Nov-2025

Cabin	2400 USD pp
-------	-------------

22-Nov-2025 to 26-Nov-2025

Cabin	2400 USD pp
-------	-------------

06-Dec-2025 to 10-Dec-2025

Cabin	2400 USD pp
-------	-------------

03-Jan-2026 to 07-Jan-2026

Cabin	2650 USD pp
-------	-------------

17-Jan-2026 to 21-Jan-2026

Cabin	2650 USD pp
-------	-------------

31-Jan-2026 to 04-Feb-2026

Cabin	2650 USD pp
-------	-------------

14-Feb-2026 to 18-Feb-2026

Cabin	2650 USD pp
-------	-------------

28-Feb-2026 to 04-Mar-2026

Cabin	2650 USD pp
-------	-------------

Wild Earth Travel
Small Ships, Big Adventures

0800 945 3327 (within New Zealand) | +64 (0) 3 365 1355 | 1800 107 715 (within Australia)

info@wildearth-travel.com | wildearth-travel.com



Wild Earth Travel

Small Ships, Big Adventures

wildearth-travel.com

info@wildearth-travel.com

14-Mar-2026 to 18-Mar-2026

Cabin	2650 USD pp
-------	-------------

28-Mar-2026 to 01-Apr-2026

Cabin	2650 USD pp
-------	-------------

11-Apr-2026 to 15-Apr-2026

Cabin	2650 USD pp
-------	-------------

25-Apr-2026 to 29-Apr-2026

Cabin	2650 USD pp
-------	-------------

09-May-2026 to 13-May-2026

Cabin	2650 USD pp
-------	-------------

23-May-2026 to 27-May-2026

Cabin	2650 USD pp
-------	-------------

06-Jun-2026 to 10-Jun-2026

Cabin	2650 USD pp
-------	-------------

20-Jun-2026 to 24-Jun-2026

Cabin	2650 USD pp
-------	-------------



Wild Earth Travel
Small Ships, Big Adventures

0800 945 3327 (within New Zealand) | +64 (0) 3 365 1355 | **1800 107 715** (within Australia)

info@wildearth-travel.com | **wildearth-travel.com**