



Wild Earth Travel

Small Ships, Big Adventures

wildearth-travel.com

info@wildearth-travel.com

Up and at 'em. Get an early start and travel to the legendary Galapagos Islands--UNESCO World Heritage Site.

From Guayaquil, fly to Isla Baltra where your captain and crew welcome you aboard Yacht La Pinta. As Charles Darwin certainly was in 1835, you'll be awed by the unique beauty of the islands as you take your first exploratory steps on Isla Seymour Norte--home to Blue-footed boobies and Magnificent Frigatebirds. Formed by volcanic uplift, the small island of scruffy vegetation is ideal nesting terrain. Get an up-close view of these birds' quirky characteristics by hike and panga ride. (BLD)

Day 3 Isla Isabela / Isla Fernandina

Explore Punta Vicente Roca, a marine site of impressive geological formations, by panga--your guide helps with decoding the visible clues of the islands' fiery beginnings. Beyond the geology, spy winged residents including Blue-footed boobies and flightless cormorants. The wildly rocky coast with a partially sunken cave provides phenomenal conditions for a menagerie of fish and green sea turtles. If conditions allow, don your mask, fins, and snorkel and dive in for a close-up view! Later, stretch your legs on a guided walk experiencing one of the most pristine islands in the Galapagos, Isla Fernandina. The island's active volcano erupted as recently as 2009. Thousands of marine iguanas reside here, and it's also a favorite haunt of Galapagos penguins. (BLD)

Day 4 Isla Isabela

Large in landmass and young at one million years old, Isla Isabela supports abundant wildlife. At Urbina Bay, a stroll among the island's vegetation reveals large, colorful land iguanas and perhaps giant tortoises. Crossing from Urbina Bay to Tagus Cove, scan the water for whales and dolphins that frequent Bolivar Channel from one of La Pinta's spacious decks. Dropping anchor at Tagus Cove--an otherworldly landscape of eroded tuff cones--there's a chance to snorkel, kayak, or ride a panga before hiking the backside of Darwin Crater overlooking a saltwater lake and panoramic views. There'll be excellent opportunities for viewing penguins, Galapagos hawks, cormorants, petrified rain (bits of lava that cooled quickly after contacting water), and old signatures from pirates and whalers etched into the rock, the oldest dating back to 1836. (BLD)

Day 5 Isla Rabida / Isla Santa Cruz

Isla Rabida's unusual red beach is a favorite sunbathing spot for sea lions and marine iguanas. Go eye-to-eye with Blue-footed and Nazca Boobies, Yellow Warblers, several species of Darwin's Finches, and pelicans. The warm maroon-colored beach also makes a great jumping in spot for from-the-beach snorkeling. Or keep your eyes above the waterline, inspecting marine life from the glass-bottom boat. You'll have a birds-eye view from Isla Santa Cruz hiking Cerro Dragon--or, Dragon Hill--and enjoy a well-earned panorama of the island's interior, and possibly even flamingos and lounging land iguanas. (BLD)

Day 6 Isla Santa Cruz

Today, it's all about the magnificent giant tortoise. Touring the Charles Darwin Research Station, you'll witness the exceptional conservation program where baby tortoises, "galapaguitos," are reared in protective captivity until they are old enough to safely repatriate back to their native areas. Embrace Galapagos conservation by learning about threats that still endanger this fragile ecosystem. Bring your passport along if you'd like a special Galapagos stamp. Time permitting, stroll through town as you please. After lunch at the Finch Bay Eco Hotel, explore the misty, forested highlands and see the lumbering tortoises in their natural habitat. (BLD)

Day 7 Isla Floreana

Your day is chock-full of adventure, with opportunities to snorkel, hike, kayak, skiff, ride the glass-bottom boat, or simply relax on the beach. Send a note home from Post Office Bay, dropping your postcard in Isla Floreana's famous, historic barrel mailbox. A hike at Baroness Viewpoint provides the perfect vantage for a photo-op. Then take in the island's geologic history with a panga ride or kayak investigation of its maze of volcanic channels. A tale of two beaches, walk along the green olivine beach of Punta Cormorant to a brackish lagoon known to be a flamingo hideout, then on to a white-sand beach where green sea turtles come ashore to nest. (BLD)

Day 8 Isla Baltra / Guayaquil - Disembarkation

Wild Earth Travel

Small Ships, Big Adventures

0800 945 3327 (within New Zealand) | +64 (0) 3 365 1355 | 1800 107 715 (within Australia)

info@wildearth-travel.com | wildearth-travel.com



Wild Earth Travel

Small Ships, Big Adventures



wildearth-travel.com

info@wildearth-travel.com

Your adventure of a lifetime aboard La Pinta concludes back on Isla Baltra. From here, transfer to the airport for your flight to Guayaquil--where you'll await your connecting flight home, or if you've opted for our Machu Picchu extension, continue on to Quito, Ecuador for your flight to Lima, Peru. (B)

Please Note:

Passport required. Itineraries are guidelines; variations in itinerary and the order of days may occur to maximize your experience.



Wild Earth Travel

Small Ships, Big Adventures

0800 945 3327 (within New Zealand) | +64 (0) 3 365 1355 | **1800 107 715** (within Australia)

info@wildearth-travel.com | wildearth-travel.com



Wild Earth Travel

Small Ships, Big Adventures

wildearth-travel.com

info@wildearth-travel.com

YOUR SHIP: LA PINTA

YOUR SHIP:	La Pinta
VESSEL TYPE:	Small Ship
LENGTH:	63 metres
PASSENGER CAPACITY:	48 (in 24 cabins)
BUILT/REFURBISHED:	1983 / 2007 / 2020

The elegant, recently renovated La Pinta reflects the combined dreams shared by captains, crew, guides, and guests over the years. This beautiful 48-guest yacht features spacious cabins with floor-to-ceiling windows and sophisticated yet relaxed decks and lounges.

In one of the world's greatest marine environments, you can be sure your surroundings are front and center. From bow to stern, the elegant and sophisticated La Pinta recently received a full interior makeover and would steal the show anywhere less impressive. Instead, she's the perfect complement to the great outdoors. Floor-to-ceiling windows in the lounge showcase the views with a decor that nods to the nautical. Geared up for adventure play and wildlife, the yacht also has a fun-to-explore expedition room lined with maps and artwork, a canopied terrace, and an alfresco dining area. Her Ecuadorian crew exudes friendliness, fueled by pride in their vessel, the Galapagos Islands, and a desire to share them both. Because some good things are too good to keep secret.

Ship Amenities

Onboard Features include three public decks, on-deck hot tub, exercise room with fitness equipment, expedition room along

with an outdoor sky bar and observation lounge.

The lounge features floor to ceiling windows, the library features historical materials, and the aft covered alfresco dining area also features the hot tub and bar. Perfection.

The Dining Room features open seating. Meals are served at table at set times. Unlimited beverages, alcoholic and non, are included in the price of the cruise. Vegetarian options are always available. Dietary restrictions are happily accommodated with advance notice.

Cabin Features: Floor-to-ceiling view windows; air conditioning; universal docking station; hairdryer, conditioning shampoo, body wash; in-room safe deposit box



deposit box



Wild Earth Travel

Small Ships, Big Adventures

0800 945 3327 (within New Zealand) | +64 (0) 3 365 1355 | 1800 107 715 (within Australia)

info@wildearth-travel.com | wildearth-travel.com

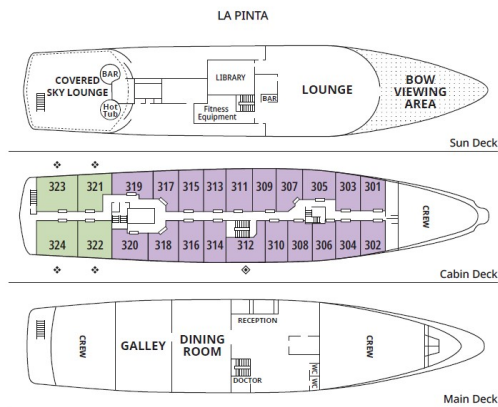
Wild Earth Travel

Small Ships, Big Adventures

wildearth-travel.com

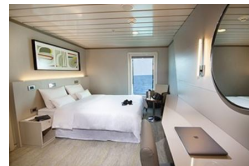
info@wildearth-travel.com

INSIDE YOUR SHIP

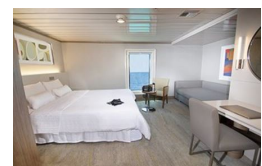


■ Admiral (ADM) ◆ Double or Triple Accommodation
■ Captain (CPT) ◊ Fixed Queen

Luxury Cabin/Captain Cabin



Luxury Plus Cabin/Admiral Cabin



Wild Earth Travel

Small Ships, Big Adventures

0800 945 3327 (within New Zealand) | +64 (0) 3 365 1355 | 1800 107 715 (within Australia)

info@wildearth-travel.com | wildearth-travel.com



Wild Earth Travel

Small Ships, Big Adventures



wildearth-travel.com

info@wildearth-travel.com

PRICING

08-May-2025 to 15-May-2025

Luxury Cabin/Captain Cabin	11600 USD pp
Luxury Plus Cabin/Admiral Cabin	13300 USD pp

Wild Earth Travel

Small Ships, Big Adventures

0800 945 3327 (within New Zealand) | +64 (0) 3 365 1355 | **1800 107 715** (within Australia)

info@wildearth-travel.com | wildearth-travel.com