

Wild Earth Travel

Small Ships, Big Adventures

wildearth-travel.com

info@wildearth-travel.com

GALAPAGOS ISLANDS EXPEDITION CRUISE - NINE OF THE BEST ISLES PLUS MACHU PICCHU

South America land adventure

The first part of our adventure takes place on land. Setting off from Lima, Peru's vibrant capital, we'll fly to Cusco, the ancient centre of the Inca empire, and discover its many cultural and architectural wonders. Next, we travel up the Sacred Valley on a luxury train to the incredible mountain citadel of Machu Picchu before heading back to Cusco and then flying to charming Quito - the 'City of Eternal Spring'.

Awe inspiring Gal apagos Islands

After exploring Quito's historic centre on a guided tour, we'll head to the Galapagos Islands for an unforgettable sea adventure. This itinerary calls at nine incredible islands - Baltra, Santa Cruz, Isabela, Fernandina, Floreana, Santiago, Rabida, Bartolome and Genovesa. Here, you'll visit picturesque landscapes showcasing a range of ecosystems and see many of the species which made these islands so famous. On this active cruise, and with an onboard Expedition Team of local guides, you'll get closer to the many natural wonders in our small panga boats, kayaks and glass-bottom boat.



ITINERARY

DAY 1 Your land adventure begins

Start your adventure in ancient and modern Lima

Welcome to Peru, one of the most fascinating countries in South America!

If you have time after your arrival in Lima before settling in at your hotel for an overnight stay, we suggest you wander historical centre, which is packed with elegant Spanish colonial architecture, is a UNESCO World Heritage Site.

Wild Earth Travel

Small Ships, Big Adventures

0800 945 3327 (within New Zealand) | +64 (0) 3 365 1355 | **1800 107 715** (within Australia)

info@wildearth-travel.com | **wildearth-travel.com**



Wild Earth Travel

Small Ships, Big Adventures

wildearth-travel.com

info@wildearth-travel.com

Or why not walk along the oceanfront boardwalk in the upmarket Miraflores district. Here, you'll find many restaurants and cafes, as well as shops if you need to purchase anything ahead of your adventure. Lima is considered the food capital of Latin America, so be sure to try local dishes like ceviche, which is raw fish marinated in lime juice with onion and chilli.

DAY 2 City of the Incas and a cultural gem

Explore the ancient seat of the Inca Empire

In the morning, you'll take a flight to Cusco, the ancient seat of the Inca Empire. A local guide will take you to check in at your hotel, before inviting you on a guided tour of this enigmatic city.

You'll see impressive Inca structures contrasted with ornate buildings from Spanish colonial times. Visit the 15th century ceremonial compound of Sacsayhuaman, or admire the architecture of the Spanish Santo Domingo church, a convent built on the ruins of Koricancha, the Inca Sun Temple. After your tour of the highlights of this cultural and architectural gem, we'll return to the hotel for dinner.

DAY 3 Back in time to a lost world

Discover the lost city of the Incas

An early morning transfer will take you to Ollantaytambo, in the Sacred Valley, from where you'll catch a train along the narrow-gauge line to Machu Picchu, passing through stunning highland scenery along the way.

After around two hours, we'll stop at the small town of Aguas Calientes and take the short bus ride to Machu Picchu - the so-called Lost City of the Incas.

You'll enjoy a guided tour of this once-hidden settlement, marvelling at the stonewalls, terraces and ramps that are carved into the mountain. You'll love the peaceful atmosphere of Machu Picchu as you gaze at the lowland jungle from this city in the clouds.

After lunch, we'll return to Cusco where you'll enjoy your final night at the hotel.

DAY 4 Quito - city of eternal spring

Discover the vibrant city of Quito

The day begins with breakfast at your hotel. We'll then drive to the airport in Cusco for the morning flight via Lima to Ecuador. You'll arrive in Quito in the afternoon.

At 9,350 feet, Quito is the second-highest capital city in the world, and its main draw is the exquisite Old Town which was founded on an ancient Inca settlement. A UNESCO World Heritage site, it's packed with well-preserved colonial-era architecture, including colourful plazas, magnificent churches and handsome monuments.

If you have enough time in the evening, visit the Calle La Ronda, an ancient pedestrian street with links to the poets and artists who've lived here. It's lined with shops and cafes, and there are many handicrafts available to buy.

DAY 5 Visit historic Quito

Straddle the Equator at the Middle of the World City

Today you'll enjoy a guided tour of Quito's remarkable Old Town - one of the largest and best-preserved colonial-era quarters in South America. Wander through cobblestone streets as you admire the architecture - and sample some delicious chocolate made from finest Ecuadorian cacao along the way.

Next, you'll head to the iconic 'Middle of the World City', located around 16 miles north of Quito. After lunch, you'll visit the famous monument that delineates the imaginary line of the Equator. Have your camera ready to capture the moment you stand with one foot in each hemisphere.

DAY 6 Your cruise begins

Get ready to explore the spectacular Galapagos Islands

As your South America land adventure draws to a close, it's time to embark on



Wild Earth Travel

Small Ships, Big Adventures

wildearth-travel.com

info@wildearth-travel.com

the next stage of your journey. After breakfast, a short flight will take you to Baltra Island in the spectacular Galapagos archipelago. A transfer brings you straight to the port where your comfortable expedition ship MS Santa Cruz II awaits.

In the afternoon we'll begin our exploration of the Galapagos Islands following the north shore of Santa Cruz towards the fascinating landscapes of Cerro Dragon - Dragon Hill - where we'll land. The first part of the walk here passes by a brackish lagoon that's frequented by shorebirds and American Flamingos. Further inland, the trail offers a beautiful view of the bay and the western islands of the archipelago, as well as a chance to get a first look at some land iguanas.

DAY 7 Wildlife-rich Isabela and Fernandina

Scan the coastline and seas for iconic species

You'll start your day at Punta Vicente Roca, on the north-western tip of Isabela Island. After breakfast, we'll explore the coast by panga boat, learning about the dramatic geology of the area from your naturalist guides.

This site is a nesting place for several bird species, so look out for Flightless Cormorants, Galapagos Penguins, and boobies. Weather permitting, you'll get to snorkel alongside the cliffs, where you might find green sea turtles, oceanic sun fish, and fur seals.

In the afternoon, we'll explore Fernandina, an island with a unique ecology and a big population of marine iguanas. Scan the coast for sea lions, Sally Lightfoot crabs, hawks and penguins.

DAY 8 Darwin's Santa Cruz

Meet the famous giant tortoises of Galapagos

Today, you'll explore Santa Cruz Island. In the morning, we'll disembark at Puerto Ayora to visit the Charles Darwin Research Station.

A giant tortoise breeding centre, here you can see recently hatched tortoises and Darwin's famous finches - the birds he used as a basis for his theory of evolution by natural selection. There's also an impressive forest of prickly pear

cacti that's home to many land birds.

Enjoy a cooler climate over lunch in the lush highlands, where giant tortoises shuffle about munching on grass and wallowing in pools.

You'll have time for another activity, including mountain biking or visiting a sugar plantation.

DAY 9 Picturesque Floreana

Discover Galapagos history and underwater wildlife

After breakfast, you'll enjoy a panga boat ride among the channels on Floreana's north shore, before taking in the incredible views of the island from Baroness Cove. Later on, we'll land at Post Office Bay to visit the historic barrel that has served as a post office in the archipelago for over two centuries.

After lunch, you'll explore the wonders around Champion Islet in a panga boat or aboard our glass-bottom boat. Here, you can snorkel in one of the best spots in the archipelago.

From there, it's onwards to Cormorant Point, where we'll take a walk from an olivine-crystal beach to a brackish lagoon, where you can commonly see American Flamingos, Pintail Ducks and more.

DAY 10 Relax in Baltra

Unwind and recharge your batteries

Relax on board while we anchor off Baltra Island. After four days of exploring the unique nature and environments of Galapagos, it is the moment to pause for a while and recharge your batteries for the days ahead. Make use of the many onboard facilities, flick through the books in the library or exercise in the gym - it's up to you.

In the afternoon, we'll land at Las Bachas beach, located on the northern shore of Santa Cruz Island. This glorious white beach with turquoise waters is a great place to spot iconic Galapagos wildlife like flamingos and sea turtles. Enjoy swimming or snorkelling before heading back to the ship for an expedition briefing about the following day.

Wild Earth Travel

Small Ships, Big Adventures

0800 945 3327 (within New Zealand) | +64 (0) 3 365 1355 | **1800 107 715** (within Australia)

info@wildearth-travel.com | **wildearth-travel.com**



Wild Earth Travel

Small Ships, Big Adventures

wildearth-travel.com

info@wildearth-travel.com

DAY 11 Pristine Santiago Island

See iconic wildlife and spectacular landscapes

Today you'll explore Santiago Island's pristine beaches and picturesque landscapes. Take in the impressive cliffs of Buccaneer Cove on the northwest coast, home to a large number of marine birds and sea lions. Immerse yourself in the scenery through a range of water activities and marvel at fantastic rock formations such as 'Elephant Rock' and 'The Bishop.'

In the afternoon, we'll head to Puerto Egas, one of the best visitor sites on the island. You'll have the opportunity to see a colony of Galapagos fur seals and exotic birdlife on an excursion. Or you could just swim or snorkel along the rocky shorelines, typically, in the company of marine turtles.

DAY 12 Stunning Rábida & Bartolomé

Soak up the sights and sounds of the Galapagos

Your day starts on tiny Rabida Island, located off the southern shore of Santiago. You can go for a thrilling panga ride along the coast explore the island's mesmerising, red-coloured beach. Soak up the sights and sounds made by a colony of sea lions, and watch for marine iguanas, mockingbirds, Yellow Warblers and several species of Darwin's Finches.

In the afternoon, we'll sail to the golden sands of Bartolome Island, dominated by the imposing Pinnacle Rock. You can swim or snorkel off the beach here, discover colourful marine life from our glass-bottom boat, or watch for Galapagos Penguins on the shore. Hike up to the summit of the island for fantastic views.

DAY 13 Genovesa, a bird paradise

Discover a birdlife haven and take a refreshing dip

Today you'll explore Genovesa Island. The morning starts with a steep but short climb - only 90 feet - up Prince Philip's Steps - El Barranco - to reach flat and

rocky plateau. Once there, you can walk along comfortably and look out for large colonies of Nazca Boobies, Red-footed Boobies, Great Frigatebirds and Storm Petrels. Afterwards or instead, hop into a kayak for some aquatic adventuring.

In the afternoon, we'll land and swim at the beautiful beach that fringes Darwin Bay for a swim. Following this refreshing dip, take a stroll and observe hundreds of island birds, or alternatively just take it easy on the beach, swimming, snorkelling or kayaking.

DAY 14 One last adventure

See giant tortoises in the wild

We start our last morning on the north shore of Santa Cruz Island. A dry landing at a passenger wharf and a bus ride to the loftier region of the island will provide a final highlight of your expedition cruise: giant tortoises in the wild.

The windward slopes of the island are set aside as a reserve that's home to two species of giant tortoise. These lush highlands also feature dense forests of Galapagos daisies, orchids and bromeliads.

After this visit we'll transfer directly to the airport in Baltra for your flight to Quito to connect to your international flight, or if you prefer, continue to Guayaquil for another adventure.

To explore more of Ecuador, why not extend your stay and join one of our optional Post-Programmes.

Please Note:

Itineraries are subject to change.

Wild Earth Travel

Small Ships, Big Adventures

0800 945 3327 (within New Zealand) | +64 (0) 3 365 1355 | **1800 107 715** (within Australia)

info@wildearth-travel.com | **wildearth-travel.com**



Wild Earth Travel

Small Ships, Big Adventures

wildearth-travel.com

info@wildearth-travel.com

YOUR SHIP: SANTA CRUZ II

YOUR SHIP:	Santa Cruz II
VESSEL TYPE:	Expedition Vessel
LENGTH:	71.8 meters
PASSENGER CAPACITY:	90
BUILT/REFURBISHED:	2002 / 2015 / 2018 / 2021

When you are exploring the Galapagos islands with us onboard the MS Santa Cruz II, you will enjoy a relaxed atmosphere in high quality surroundings. The small size - with a guest capacity of maximum of 90 allows for a cozy yet classy environment. You'll easily feel at home on board.

Gastronomic delights

Mouthwatering meals and creative cocktails await you aboard MS Santa Cruz II. With creativity and dedication, our cheerful staff draw inspiration from everything from the weather to the region's flavours and local ingredients.

Beagle Restaurant - Incredible Dining Experience

The MS Santa Cruz II has a team of trained staff members that utilize locally-sourced organic food to prepare every dish. This ship provides a Le Cordon Bleu (a trained Gastronomy Director) and a wide variety of culinary experiences that encompass all diets and preferences. Each and every meal served onboard is exquisite.

Panorama bar & lounge

This large and well-lit area is not only the main bar, but also the place where most ship events will take place (welcome and farewell cocktail), and doubles as an ideal place for lectures. It's

the ideal site to chill and relax with Wi-Fi hot spot and direct access to our al fresco terrace.

Luxury living

Your ship gives you everything you could wish for in a home away from home: places for stimulation, relaxation, and meetings with your fellow guests. With a Scandinavian-inspired decor and all modern conveniences, MS Santa Cruz II does it in comfort and style.

Expedition lounge & bar with Science Corner and library

Facing the front of the ship, the Expedition Lounge - complete with a refreshment station and library - is a fantastic place to admire the beauty of the Galapagos' Islands from inside. The Science Corner includes a glass cabinet, a microscope and a whale vertebrae clone, a perfect learning zone about our science activities.

Sky deck

The Sky deck offers spaces where guests can relax and enjoy their Galapagos expeditions basking in the sun at the very top of the ship. The sun deck and fitness room are located here.

Wellness and workouts

Whenever you feel the need to get your body moving, exercise facilities are on hand to get your pulse up. And whether you're relaxing after a day of fascinating lectures, or a long hike, there'll be plenty of opportunities to relax your body and mind.

Fitness Room

Our fitness center is equipped with yoga mats, set of weights, 2 treadmills, 2 stationary bikes, and an elliptical trainer for those guests who do not want to let their routine slide.

Hot Tub



Wild Earth Travel
Small Ships, Big Adventures

0800 945 3327 (within New Zealand) | +64 (0) 3 365 1355 | **1800 107 715** (within Australia)

info@wildearth-travel.com | **wildearth-travel.com**



Wild Earth Travel

Small Ships, Big Adventures

wildearth-travel.com

info@wildearth-travel.com

For a nice relaxing time our two hot tubs with capacity for 5 guests each. Located on the Expedition deck are ideal.



are ideal.



Wild Earth Travel

Small Ships, Big Adventures

0800 945 3327 (within New Zealand) | +64 (0) 3 365 1355 | **1800 107 715** (within Australia)

info@wildearth-travel.com | **wildearth-travel.com**

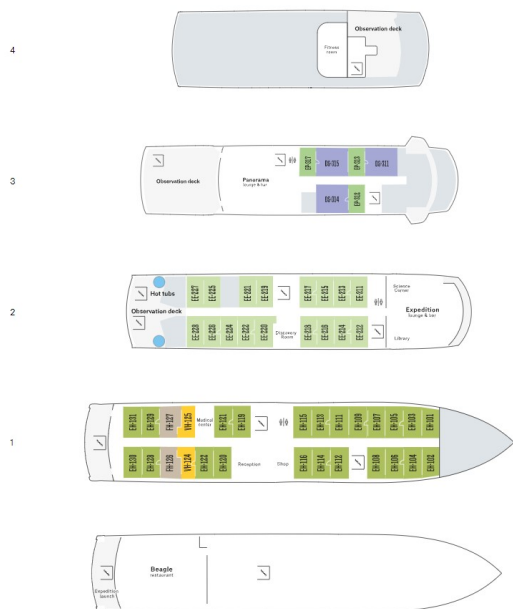
Wild Earth Travel

Small Ships, Big Adventures

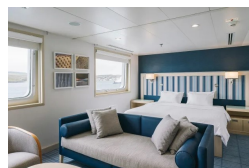
wildearth-travel.com

info@wildearth-travel.com

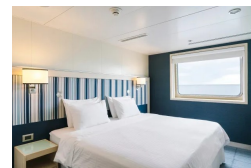
INSIDE YOUR SHIP



Darwin Suite



Explorer cabin



Wild Earth Travel
Small Ships, Big Adventures

0800 945 3327 (within New Zealand) | +64 (0) 3 365 1355 | 1800 107 715 (within Australia)

info@wildearth-travel.com | wildearth-travel.com

Wild Earth Travel

Small Ships, Big Adventures

wildearth-travel.com

info@wildearth-travel.com

PRICING

10-May-2025 to 23-May-2025

Explorer cabin	19608 AUD pp
Darwin Suite	0 pp

24-May-2025 to 06-Jun-2025

Explorer cabin	19608 AUD pp
Darwin Suite	25569 AUD pp

07-Jun-2025 to 20-Jun-2025

Explorer cabin	19608 AUD pp
Darwin Suite	25569 AUD pp

21-Jun-2025 to 04-Jul-2025

Explorer cabin	19608 AUD pp
Darwin Suite	25569 AUD pp

05-Jul-2025 to 18-Jul-2025

Explorer cabin	19608 AUD pp
Darwin Suite	25569 AUD pp

19-Jul-2025 to 01-Aug-2025

Explorer cabin	19608 AUD pp
Darwin Suite	25569 AUD pp

02-Aug-2025 to 15-Aug-2025

Explorer cabin	19608 AUD pp
Darwin Suite	25569 AUD pp

16-Aug-2025 to 29-Aug-2025

Explorer cabin	19608 AUD pp
Darwin Suite	25569 AUD pp

30-Aug-2025 to 12-Sep-2025

Explorer cabin	19267 AUD pp
Darwin Suite	25077 AUD pp

13-Sep-2025 to 26-Sep-2025

Explorer cabin	19267 AUD pp
Darwin Suite	25077 AUD pp

27-Sep-2025 to 10-Oct-2025

Explorer cabin	19267 AUD pp
Darwin Suite	25077 AUD pp

11-Oct-2025 to 24-Oct-2025

Explorer cabin	19267 AUD pp
Darwin Suite	25077 AUD pp

25-Oct-2025 to 07-Nov-2025

Explorer cabin	19267 AUD pp
Darwin Suite	25077 AUD pp

08-Nov-2025 to 21-Nov-2025

Explorer cabin	19267 AUD pp
Darwin Suite	25077 AUD pp

22-Nov-2025 to 05-Dec-2025

Explorer cabin	19267 AUD pp
Darwin Suite	25077 AUD pp



Wild Earth Travel

Small Ships, Big Adventures

wildearth-travel.com

info@wildearth-travel.com

06-Dec-2025 to 19-Dec-2025

Explorer cabin	19267 AUD pp
----------------	--------------

Darwin Suite	25077 AUD pp
--------------	--------------

20-Dec-2025 to 02-Jan-2026

Explorer cabin	20801 AUD pp
----------------	--------------

Darwin Suite	0 pp
--------------	------

17-Jan-2026 to 30-Jan-2026

Explorer cabin	19267 AUD pp
----------------	--------------

Darwin Suite	0 pp
--------------	------

Wild Earth Travel

Small Ships, Big Adventures

0800 945 3327 (within New Zealand) | +64 (0) 3 365 1355 | **1800 107 715** (within Australia)

info@wildearth-travel.com | **wildearth-travel.com**

Wild Earth Travel

Small Ships, Big Adventures

wildearth-travel.com

info@wildearth-travel.com

PRICING

31-Jan-2026 to 13-Feb-2026

Explorer cabin	19267 AUD pp
Darwin Suite	0 pp

14-Feb-2026 to 27-Feb-2026

Explorer cabin	19267 AUD pp
Darwin Suite	0 pp

28-Feb-2026 to 13-Mar-2026

Explorer cabin	19267 AUD pp
Darwin Suite	0 pp

14-Mar-2026 to 27-Mar-2026

Explorer cabin	19267 AUD pp
Darwin Suite	0 pp

26-Mar-2026 to 08-Apr-2026

Explorer cabin	23595 AUD pp
Darwin Suite	30099 AUD pp

09-Apr-2026 to 22-Apr-2026

Explorer cabin	23595 AUD pp
Darwin Suite	30099 AUD pp

23-Apr-2026 to 06-May-2026

Explorer cabin	23595 AUD pp
Darwin Suite	30099 AUD pp

07-May-2026 to 20-May-2026

Explorer cabin	23595 AUD pp
Darwin Suite	30099 AUD pp

21-May-2026 to 03-Jun-2026

Explorer cabin	23595 AUD pp
Darwin Suite	30099 AUD pp

04-Jun-2026 to 17-Jun-2026

Explorer cabin	23595 AUD pp
Darwin Suite	30099 AUD pp

18-Jun-2026 to 01-Jul-2026

Explorer cabin	23595 AUD pp
Darwin Suite	30099 AUD pp

02-Jul-2026 to 15-Jul-2026

Explorer cabin	23595 AUD pp
Darwin Suite	30099 AUD pp

16-Jul-2026 to 29-Jul-2026

Explorer cabin	23595 AUD pp
Darwin Suite	30099 AUD pp

30-Jul-2026 to 12-Aug-2026

Explorer cabin	23595 AUD pp
Darwin Suite	30099 AUD pp

13-Aug-2026 to 26-Aug-2026

Explorer cabin	23595 AUD pp
Darwin Suite	30099 AUD pp



Wild Earth Travel

Small Ships, Big Adventures

wildearth-travel.com

info@wildearth-travel.com

27-Aug-2026 to 09-Sep-2026

Explorer cabin	23595 AUD pp
----------------	--------------

Darwin Suite	30099 AUD pp
--------------	--------------

10-Sep-2026 to 23-Sep-2026

Explorer cabin	23595 AUD pp
----------------	--------------

Darwin Suite	30099 AUD pp
--------------	--------------

24-Sep-2026 to 07-Oct-2026

Explorer cabin	23595 AUD pp
----------------	--------------

Darwin Suite	30099 AUD pp
--------------	--------------

Wild Earth Travel

Small Ships, Big Adventures

0800 945 3327 (within New Zealand) | +64 (0) 3 365 1355 | **1800 107 715** (within Australia)

info@wildearth-travel.com | **wildearth-travel.com**

Wild Earth Travel

Small Ships, Big Adventures

wildearth-travel.com

info@wildearth-travel.com

PRICING

08-Oct-2026 to 21-Oct-2026

Explorer cabin 23595 AUD pp

Darwin Suite 30099 AUD pp

22-Oct-2026 to 04-Nov-2026

Explorer cabin 23595 AUD pp

Darwin Suite 30099 AUD pp

05-Nov-2026 to 18-Nov-2026

Explorer cabin 23595 AUD pp

Darwin Suite 30099 AUD pp

19-Nov-2026 to 02-Dec-2026

Explorer cabin 23595 AUD pp

Darwin Suite 30099 AUD pp

03-Dec-2026 to 16-Dec-2026

Explorer cabin 23595 AUD pp

Darwin Suite 30099 AUD pp

17-Dec-2026 to 30-Dec-2026

Explorer cabin 25082 AUD pp

Darwin Suite 32241 AUD pp