



Wild Earth Travel

Small Ships, Big Adventures

wildearth-travel.com

info@wildearth-travel.com

THE GEOGRAPHIC NORTH POLE EXPEDITION - AN UNFORGETTABLE ADVENTURE

Head for 90 degrees North! Since the 16th century, the greatest expeditions have constantly tried to reach the North Pole. This mythical geographic point inspires and attracts as much as it fascinates dreamers and conquerors seeking out the other side of the world.

What if Le Commandant Charcot achieved this absolute pinnacle adventure by enabling you, perhaps, to tread on this virtually unattainable point?

Following in the wake of Frederick Cook, Robert Edwin Peary or Roald Amundsen, who were among the many who fought to achieve this elusive goal, you will be part of the chosen few ones to attempt the odyssey, 700 km (435 miles) from any land.

From Spitsbergen, you will head towards the north to sail the waters at the edges of the Earth, towards landscapes that change constantly according to the ice and the plays of light. Nature reigns supreme here, sheltering exceptional wildlife that you will perhaps be lucky enough to see as your journey progresses: polar bears, seals or even whales! Your exploration of this silent world, frozen by the cold, will continue as you attempt to reach the Grail of all polar explorers: the North Pole!

Swept by the winds and the currents, the ice floe is constantly drifting and the Captain of your ship will manoeuvre carefully and with great humility in an attempt to reach the northernmost point of our planet.



our planet.

ITINERARY

Day 1 LONGYEARBYEN, SPITSBERGEN

Longyearbyen is the capital of the Norwegian Svalbard archipelago, located on Svalbard's main island, and is the northernmost territorial capital on the planet. With winter temperatures dropping to below 40°C, the landscapes of this mining town are simply breathtaking. The glaciers, the mountains stretching as far as the eye can see and the untouched nature, make you feel like you're in completely unexplored territory.

Day 2 AT SEA ALONG SPITSBERGEN

Wild Earth Travel
Small Ships, Big Adventures

0800 945 3327 (within New Zealand) | +64 (0) 3 365 1355 | **1800 107 715** (within Australia)

info@wildearth-travel.com | **wildearth-travel.com**



Wild Earth Travel

Small Ships, Big Adventures

wildearth-travel.com

info@wildearth-travel.com

The largest island in the Svalbard archipelago, its name meaning "pointed mountains" in German, Spitsbergen is the last piece of land before the Arctic ice floe. Aboard your ship, you will sail along the extremely spectacular coastline of this icy land. Between millennial glaciers and rugged mountains, you will discover a jagged coastline, hollowed-out by fjords. A unique setting, the refuge of a particularly rich avifauna, offering you the possibility of taking fabulous photographs from the deck of your ship.

Days 3 - 7 SAILING ICE FLOES

Enjoy the absolutely unique experience of sailing to the heart of the ice floe, this vast expanse of virgin, immaculate ice. The landscapes are constantly changing, shifting from a smooth, flat wilderness to a chaos of ice, then to channels of open water. Your ship will sail along these naturally open channels and through the areas where the frozen layer is thinnest, offering you the chance to experience magic maritime moments in the midst of drifting sea ice. It will also often be an opportunity to see a particular kind of fauna, totally dependent on the ice floe.

Day 8 GEOGRAPHIC NORTH POLE

Defined by a 90° North latitude, the Geographic North Pole lies on the Earth's rotational axis, at the intersection of all meridians. Plunged into darkness for six months of the year, then lit by the sun for the following six months, this mythical site, permanently covered in ice and remote from any land, has fascinated generations of explorers. So far, only a very few people have ever reached it: an exploit which is now accessible to you aboard Le Commandant Charcot.

Days 9 - 13 SAILING ICE FLOES ALONG GREENLAND

Enjoy the absolutely unique experience of sailing to the heart of the ice floe, this vast expanse of virgin, immaculate ice. The landscapes are constantly changing, shifting from a smooth, flat wilderness to a chaos of ice, then to channels of open water. Your ship will sail along these naturally open channels and through the areas where the frozen layer is thinnest, offering you the chance to experience magic maritime moments in the midst of drifting sea ice. It will also often be an opportunity to see a particular kind of fauna, totally

dependent on the ice floe.

Days 14 - 15 AT SEA ALONG SPITSBERGEN

The largest island in the Svalbard archipelago, its name meaning "pointed mountains" in German, Spitsbergen is the last piece of land before the Arctic ice floe. Aboard your ship, you will sail along the extremely spectacular coastline of this icy land. Between millennial glaciers and rugged mountains, you will discover a jagged coastline, hollowed-out by fjords. A unique setting, the refuge of a particularly rich avifauna, offering you the possibility of taking fabulous photographs from the deck of your ship.

Day 15 LONGYEARBYEN, SPITSBERGEN

Longyearbyen is the capital of the Norwegian Svalbard archipelago, located on Svalbard's main island, and is the northernmost territorial capital on the planet. With winter temperatures dropping to below 40°C, the landscapes of this mining town are simply breathtaking. The glaciers, the mountains stretching as far as the eye can see and the untouched nature, make you feel like you're in completely unexplored territory.

Please Note:

We are privileged guests in these extreme lands where we are at the mercy of weather and ice conditions. The sailing schedule and any landings, activities and wildlife encounters are subject to weather and ice conditions. These experiences are unique and vary with each departure. The Captain and the Expedition Leader will make every effort to ensure that your experience is as rich as possible, while respecting safety instructions and regulations.

Wild Earth Travel
Small Ships, Big Adventures

0800 945 3327 (within New Zealand) | +64 (0) 3 365 1355 | **1800 107 715** (within Australia)

info@wildearth-travel.com | **wildearth-travel.com**



YOUR SHIP: LE COMMANDANT-CHARCOT

YOUR SHIP:	Le Commandant-Charcot
VESSEL TYPE:	Polar Luxury Expedition
LENGTH:	149.9 meters
PASSENGER CAPACITY:	135 cabins
BUILT/REFURBISHED:	2018/2019

Be the first aboard Le Commandant-Charcot, the world's luxury polar exploration vessel, and enjoy a unique sailing experience in the Arctic or Antarctic!

With its hybrid propulsion combining liquefied natural gas (LNG) and electric generators, Le Commandant-Charcot has been designed to minimise the environmental impact of travel to the furthest latitudes.

The decoration of the ship, imagined by two internationally renowned design and architecture firms - the studio of Jean-Philippe Nuel and Wilmotte & Associates - is designed to be in harmony with the environment. The approach is contemporary with the desire to create a warm and elegant setting; stone, wood and leather recall the natural environment in which the ship is sailing.

Equipped with just 135 staterooms including 31 suites with balconies and outside views, Le Commandant-Charcot welcomes you in an intimate and refined atmosphere. Outstanding gastronomy in the two restaurants, relaxation in the indoor pool surrounded by its winter garden, relaxation in the well-being area with sauna and Snow Room... Like on a private yacht, each of our guests is unique.

PUBLIC AREAS

Le Commandant-Charcot has many common areas that are designed and equipped to meet all of your needs while preserving the intimacy of each passenger.

A 177 m² reception area includes: A reception/concierge desk, An expeditions desk, The ship's administrative services, The sales office, manned by our Hospitality & Travel Manager officer, Our boutique which sells clothing, jewellery, beauty products, postcards and various accessories, The image & photo desk.

The different lounges: A 302 m² main lounge including a 28 m² cigar lounge, a tea corner and a bar, with live music on selected evenings, A 400 m² panoramic bar and lounge, An open-air Bar.

The recreation spaces

Fitness & Beauty Corner: Fitness room: Elliptic, running machines, bicycles...

Beauty Corner: Hairdresser, Massage rooms, Sauna, Snow Room, Nail Shop.

Pool area: Indoor Pool and winter garden - Outdoor Pool

Theatre: Capacity: 270-276 - Main show room for conferences and live entertainment on selected evenings - State-of-the-art audio and video technology.

Leisure area: Public areas - Library - Medical centre.

16 Zodiac®.



Wild Earth Travel

Small Ships, Big Adventures

wildearth-travel.com

info@wildearth-travel.com



16 Zodiac®.

Wild Earth Travel
Small Ships, Big Adventures

0800 945 3327 (within New Zealand) | +64 (0) 3 365 1355 | 1800 107 715 (within Australia)

info@wildearth-travel.com | wildearth-travel.com

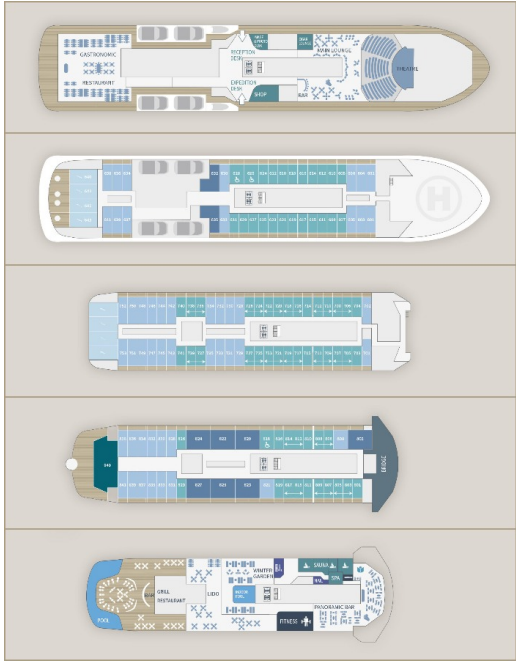


Wild Earth Travel
Small Ships, Big Adventures

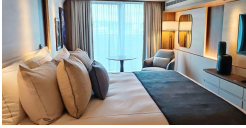
wildearth-travel.com

info@wildearth-travel.com

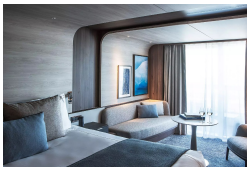
INSIDE YOUR SHIP



Deluxe Suite Deck 6



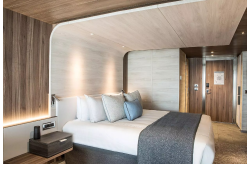
Deluxe Suite Deck 7



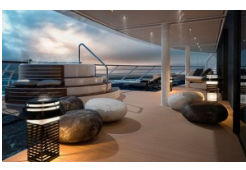
Deluxe Suite Deck 8



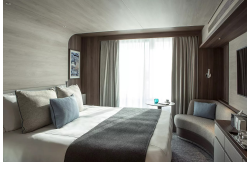
Grand Prestige Suite



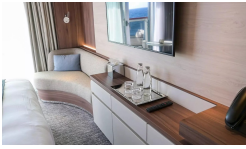
Owner's Suite



Prestige Stateroom Deck 6



Prestige Stateroom Deck 7



Prestige Stateroom Deck 8



Wild Earth Travel
Small Ships, Big Adventures

0800 945 3327 (within New Zealand) | +64 (0) 3 365 1355 | **1800 107 715** (within Australia)

info@wildearth-travel.com | wildearth-travel.com



PRICING

22-Jul-2025 to 06-Aug-2025

Prestige Stateroom Deck 6	62550 AUD pp
Prestige Stateroom Deck 7	63800 AUD pp
Prestige Stateroom Deck 8	65050 AUD pp
Deluxe Suite Deck 6	66930 AUD pp
Deluxe Suite Deck 7	70040 AUD pp
Deluxe Suite Deck 8	72550 AUD pp
Prestige Suite Deck 7	93790 AUD pp
Prestige Suite Deck 8	96900 AUD pp
Grand Prestige Suite	100030 AUD pp
Privilege Suite Deck 8	106280 AUD pp
Suite Duplex	146880 AUD pp
Owner's Suite	209440 AUD pp

06-Aug-2025 to 21-Aug-2025

Prestige Stateroom Deck 6	62550 AUD pp
Prestige Stateroom Deck 7	63800 AUD pp
Prestige Stateroom Deck 8	65050 AUD pp
Deluxe Suite Deck 6	66930 AUD pp
Deluxe Suite Deck 7	70040 AUD pp
Deluxe Suite Deck 8	72550 AUD pp
Prestige Suite Deck 7	93790 AUD pp
Prestige Suite Deck 8	96900 AUD pp
Grand Prestige Suite	100030 AUD pp
Privilege Suite Deck 8	106280 AUD pp
Suite Duplex	146880 AUD pp
Owner's Suite	209440 AUD pp

21-Aug-2025 to 05-Sep-2025

Prestige Stateroom Deck 6	77150 AUD pp
Prestige Stateroom Deck 7	78620 AUD pp
Prestige Stateroom Deck 8	80090 AUD pp
Deluxe Suite Deck 6	82300 AUD pp
Deluxe Suite Deck 7	85960 AUD pp
Deluxe Suite Deck 8	88910 AUD pp
Prestige Suite Deck 7	113900 AUD pp
Prestige Suite Deck 8	117560 AUD pp
Grand Prestige Suite	121240 AUD pp
Privilege Suite Deck 8	128590 AUD pp
Suite Duplex	176360 AUD pp
Owner's Suite	209440 AUD pp



PRICING

12-Jul-2026 to 27-Jul-2026

Prestige Stateroom Deck 6	55400 AUD pp
Prestige Stateroom Deck 7	56440 AUD pp
Prestige Stateroom Deck 8	57470 AUD pp
Deluxe Suite Deck 6	59040 AUD pp
Deluxe Suite Deck 7	61640 AUD pp
Deluxe Suite Deck 8	63710 AUD pp
Prestige Suite Deck 7	81380 AUD pp
Prestige Suite Deck 8	83970 AUD pp
Grand Prestige Suite	86570 AUD pp
Privilege Suite Deck 8	91770 AUD pp
Suite Duplex	125540 AUD pp
Owner's Suite	209800 AUD pp

27-Jul-2026 to 11-Aug-2026

Prestige Stateroom Deck 6	59050 AUD pp
Prestige Stateroom Deck 7	60170 AUD pp
Prestige Stateroom Deck 8	61270 AUD pp
Deluxe Suite Deck 6	62950 AUD pp
Deluxe Suite Deck 7	65740 AUD pp
Deluxe Suite Deck 8	67960 AUD pp
Prestige Suite Deck 7	86880 AUD pp
Prestige Suite Deck 8	89670 AUD pp
Grand Prestige Suite	92450 AUD pp
Privilege Suite Deck 8	98020 AUD pp
Suite Duplex	134200 AUD pp
Owner's Suite	209800 AUD pp

11-Aug-2026 to 26-Aug-2026

Prestige Stateroom Deck 6	55400 AUD pp
Prestige Stateroom Deck 7	56440 AUD pp
Prestige Stateroom Deck 8	57470 AUD pp
Deluxe Suite Deck 6	59040 AUD pp
Deluxe Suite Deck 7	61640 AUD pp
Deluxe Suite Deck 8	63710 AUD pp
Prestige Suite Deck 7	81380 AUD pp
Prestige Suite Deck 8	83970 AUD pp
Grand Prestige Suite	86570 AUD pp
Privilege Suite Deck 8	91770 AUD pp
Suite Duplex	125540 AUD pp
Owner's Suite	209800 AUD pp



Wild Earth Travel
Small Ships, Big Adventures

wildearth-travel.com **info@wildearth-travel.com**

PRICING

27-Aug-2026 to 11-Sep-2026

Prestige Stateroom Deck 6	55400 AUD pp
Prestige Stateroom Deck 7	56440 AUD pp
Prestige Stateroom Deck 8	57470 AUD pp
Deluxe Suite Deck 6	59040 AUD pp
Deluxe Suite Deck 7	61640 AUD pp
Deluxe Suite Deck 8	63710 AUD pp
Prestige Suite Deck 7	81380 AUD pp
Prestige Suite Deck 8	83970 AUD pp
Grand Prestige Suite	86570 AUD pp
Privilege Suite Deck 8	91770 AUD pp
Suite Duplex	125540 AUD pp
Owner's Suite	209800 AUD pp

ADDITIONAL CHARGES: Port Charges. From 1110 AUD pp

Wild Earth Travel
Small Ships, Big Adventures

0800 945 3327 (within New Zealand) | +64 (0) 3 365 1355 | **1800 107 715** (within Australia)

info@wildearth-travel.com | wildearth-travel.com



Wild Earth Travel

Small Ships, Big Adventures

wildearth-travel.com

info@wildearth-travel.com

UP TO 30% OFF - SPECIAL BONUS

Online prices reflect the current brochure fare savings of up to 30%. Prices may change based on demand. Terms and conditions apply. This special offer is subject to availability. Please contact us for more details.

Wild Earth Travel
Small Ships, Big Adventures

0800 945 3327 (within New Zealand) | +64 (0) 3 365 1355 | **1800 107 715** (within Australia)

info@wildearth-travel.com | **wildearth-travel.com**