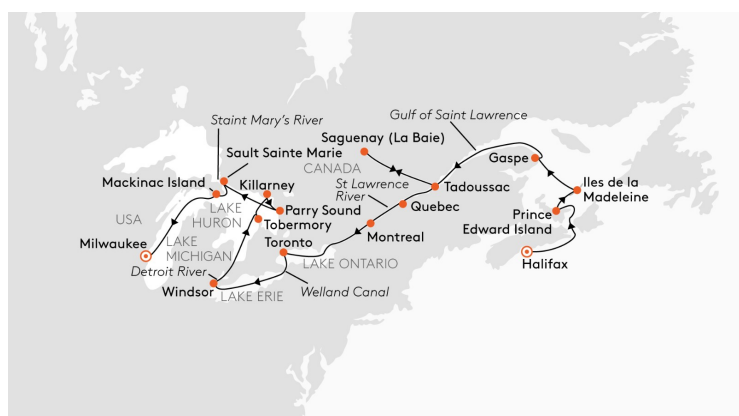




GREAT LAKES AND ST LAWRENCE RIVER - LIFELINE OF NORTH AMERICAN IN THE FALL

This cruise weaves a tapestry of cities, wilderness, and adventure along North America's rivers and lakes, igniting a pioneering spirit amid vast, untamed landscapes. Highlights include thrilling lock passages on the St Lawrence River and Welland Canal, the vibrant hues of Indian summer on active hikes through forests and coastal trails, and immersive discoveries about Indigenous peoples and settlers. Daily-changing scenery--featuring skerries, islands, waterfalls, cliffs, and lighthouses--pairs with the magic of pristine waterways, from the Saguenay Fjord to the Great Lakes, offering an unforgettable American dream on the water.



ITINERARY

Day 1 Halifax/Nova Scotia/Canada

Departure 19.00 hrs

Day 2 Relaxation at sea

Day 3 - Day 4 Prince Edward Island, Iles de la Madeleine

In Charlottetown on Prince Edward Island, you will explore the birthplace of Canada. The history of the Confederation is domineered by the glories of nature on a scenic tour or a visit to an oyster farm¹ On the Iles de la Madeleine, red cliffs and long sandy beaches provide breathtaking island impressions. Alternatively, a culinary tour¹ combines cheese, fish and the art of brewing.

Day 5 Gaspe

From 7.00 to 13.00 hrs



The local charm of the small town of Gaspé is defined by the surrounding picturesque bays and cliffs. Autumn shows its vibrant guises once again on a scenic tour of the peninsula and the Forillon National Park. You can also explore this paradise for amateur ornithologists actively on a hike.

Day 6 Tadoussac

From 13.00 to 20.00 hrs

As you travel along the river, your team of experts on board will tell you all about the region's great history - from the early Woodland period and the First Nations to the current economic significance. With a little luck, you'll spot beluga, blue, humpback or fin whales whilst whale watching off Tadoussac.

Day 7 Saguenay

Cruising on the Saguenay Fjord

From 6.00 to 14.00 hrs

Indian summer hues will colour your route with accents of reds and yellows. The exact period and intensity of the natural phenomenon are difficult to predict, but the timing of your cruise is favourable for enjoying profoundly vibrant impressions. One of the largest side branches of the St Lawrence River, the Saguenay, is also particularly picturesque at this time of year. Experience the wilderness actively on a hike¹ or by seaplane. Cruising on the Saguenay Fjord, you may be lucky to spot belugas, which can be found hunting for fish and plankton here all year round.

Day 8 Quebec

From 8.00 to 18.00 hrs

French savoir vivre and Canadian zest for life invite you to explore the historic quarter in Quebec. Explore the many sights on a city tour. On a trip to Montmorency Falls and Ile d'Orleans, you will pass some of Canada's oldest French settlements.

Day 9 Montreal

From 8.00 to 0.00 hrs

Afterwards, Montreal welcomes you with its European charm as the second largest francophone city in the world. A city tour combines picturesque town houses and wide boulevards with a walk in the underground city. Alternatively, the wineries in the Eastern Townships will awaken the sommelier in you.

Day 10 Lock adventure on the St Lawrence River

Daytime passage through seven locks

An extraordinary passage follows during a lock adventure on the St Lawrence River. This is a nautical masterpiece that only a few ships can manage. The open deck areas are the ideal place from which to watch the ship negotiate the seven locks and the height differences.

Day 11 Toronto/Lake Ontario

From 8.00 to 0.00 hrs

In Toronto, a city tour by tram¹ shows how skyscrapers, parks and trendy districts complement each other well. As Canada's largest city, Toronto is Canada's economic centre and one of the world's leading financial centres, after decades during which Montreal had held that role. The city is located on the north-western shore of Lake Ontario, the smallest of the five Great Lakes. From Toronto it is also not far to the most famous waterfalls in North America - the Niagara Falls.

Day 12 Lock adventure in the Welland Canal

Daytime passage through eight locks

Cruise on Lake Erie

The next stage of your cruise is a lock adventure on the Welland Canal. Follow the challenging passage on the deck tour at the bow or the ship's many open



Wild Earth Travel

Small Ships, Big Adventures

wildearth-travel.com

info@wildearth-travel.com

deck areas. Through eight locks, your small ship overcomes almost 100 m (328 ft) of height, corresponding to a lock lift the height of Niagara Falls. This is only possible thanks to the ship's retractable bridge wings.

Day 13 Windsor/Detroit River

From 7.30 to 18.00 hrs

Behind you lies vast Lake Erie and the route takes you on to Windsor in Canada. From the ship, you'll have the best view of the skyline of America's former "Motor City" on the other bank of the river. Visit Detroit1 to discover the roots of automotive history and the varied architecture of this city that is once again on the up. Follow in the footsteps of Henry Ford1 at the museum that bears his name and see masterpieces of the road and rails. The stunning passage on the Detroit River takes you towards Lake Huron.

Day 14 Tobermory/Lake Huron

From 13.00 to 19.00 hrs

Maritime charm awaits you on your cruise on Lake Huron to the fishing town of Tobermory in Georgian Bay. Let your impressions be shaped by limestone coastlines, small bays and Canadian flora on a hike along the Bruce Trail at your own pace.

Day 15 Killarney

From 8.00 to 19.00 hrs

The small coastal municipality of Killarney reveals its Irish roots in its name. The "emerald isle" of George Island can be reached by ferry and will show off its colourful side in autumn. Many outdoor activities and a great sense of freedom define your explorations of the uninhabited island. Discover Killarney independently and enjoy a Zodiac ride with beautiful scenery and good chances of seeing wildlife. With a bit of luck, you will spot cormorants, Canada geese and bald eagles.

Day 16 Parry Sound

From 9.00 to 17.00 hrs

The small HANSEATIC inspiration is in its element as it charts a course through a scenic labyrinth of water to reach Parry Sound. Explore the town and the nearby lake shore on the marine walking trails or take a boat trip of the Thirty Thousand Islands. The varied archipelago scenery is filled with islands emerging from the water, narrow channels and imposing cliffs. Alternatively, you can soak up the unforgettable panoramas in Killbear Provincial Park, where pink granite banks and autumnal forest blend to create majestic scenery.

Day 17 Sault Ste. Marie/USA

From 12.00 to 18.00 hrs (official stop)

On a walk through Sault Sainte Marie, you can immerse yourself in the fascinating stories of immigrants at the museum or marvel at the enormous lock system that separates Canada and the USA here.

Day 18 Mackinac Island

From 7.00 to 13.00 hrs

Mackinac Island is a natural jewel of the Great Lakes and is one of the most beautiful islands in the USA. Discover the small car-free idyll independently by bicycle or on a carriage ride. Whilst Victorian villas and the Grand Hotel recall the 19th century, Fort Mackinac serves as a reminder of the American Revolutionary War.

Day 19 Milwaukee/Lake Michigan/USA

Arrival 7.30 hrs

Please note:

Itineraries are subject to change.

Wild Earth Travel

Small Ships, Big Adventures

0800 945 3327 (within New Zealand) | +64 (0) 3 365 1355 | **1800 107 715** (within Australia)

info@wildearth-travel.com | wildearth-travel.com



wildearth-travel.com

info@wildearth-travel.com

YOUR SHIP: HANSEATIC INSPIRATION/NATURE/SPIRIT

YOUR SHIP:	Hanseatic Inspiration/Nature/Spirit
VESSEL TYPE:	Expedition
LENGTH:	138 m
PASSENGER CAPACITY:	230
BUILT/REFURBISHED:	2021

The HANSEATIC inspiration, a small, state-of-the-art expedition ship with a maximum of 230 guests, offers a perfect blend of adventure and comfort for explorers seeking to uncover the world's wonders. As an international vessel conducting cruises in both English and German, it brings over 30 years of expertise from a market leader in German-speaking countries to every journey. Each expedition is a masterpiece, passionately crafted to reveal far-flung worlds--be it icy realms, tropical paradises, wildlife havens, or cultural gems--making every voyage a unique discovery aboard this exceptional ship.

Features of all cabins and suites

An ocean view with even more: exclusively outside cabins and suites, almost all with balconies or French balconies

Spaciously designed - enjoy a relaxing stay in rooms from 21 m²/226 ft² up to 71 m²/764 ft² in size

Exceptionally equipped - for example, with binoculars, Nordic Walking poles, air conditioning, coffee machine and mini bar (free of charge) and 24-hour cabin service

Separable beds

Rain shower and heated wall in bathroom (e.g. for towels and

wet parkas)

Extensive infotainment with live broadcast and recordings of expert presentations, forwardview camera, navigation chart, films and much more

Restaurants

Aboard the HANSEATIC inspiration, a new kind of freedom blends adventure and pleasure with a culinary journey across three exceptional restaurants. The spacious HANSEATIC Restaurant offers flexible mealtimes and a free choice of seating, serving a daily-changing menu of global flavors inspired by local specialties, paired with fine wines and supported by attentive 24-hour cabin service. At the Lido Restaurant, guests can savor breakfast under the open sky or enjoy a perfectly grilled steak from the outdoor barbecue, complete with panoramic views and an open show kitchen. The specialty restaurant Nikkei fuses fine Japanese creations with modern Peruvian cuisine, delivering a unique dining experience that elevates exploration to new heights--all while bars in the Observation Lounge and HanseAtrium offer favorite drinks against stunning backdrops, from Nordic fjords to icy Antarctic vistas.

Fitness and Wellness

On the HANSEATIC inspiration, an extraordinary time out awaits after thrilling Zodiac rides, challenging hikes, or Arctic adventures. Unwind in the Ocean Spa, where a Finnish sauna with stunning ocean views, a gentle steam sauna, an ice fountain, and a relaxation room rejuvenate your senses, complemented by professional massages, cosmetic treatments, and eco-friendly products made from natural, vegan ingredients.



Wild Earth Travel

Small Ships, Big Adventures

wildearth-travel.com **info@wildearth-travel.com**

Stay active in the 100 m² fitness room or separate course room--both with ocean vistas--guided by a fitness coach offering personalized advice and a variety of courses, either indoors or on deck. The pool area, with its flexible canopy, invites relaxation year-round, featuring water loungers, a whirlpool, and a bar, ensuring a perfect blend of indulgence and revitalization against the backdrop of the open sea.

Knowledge

Shore excursions and Zodiac rides come alive with deeper context through fascinating presentations in the HanseAtrium, a high-tech lounge where experts share daily precaps and recaps, doubling as an atmospheric evening bar for films and discussions. The Ocean Academy enhances the journey with a Study Wall and interactive poster of scientific insights, microscopes for exploring hidden wonders alongside experts, and Study Seats--with swivel touchscreens--for personal dives into science. Supported by travel diaries and destination videos, this immersive experience broadens horizons with cutting-edge tools and expertise.



expertise.

Wild Earth Travel

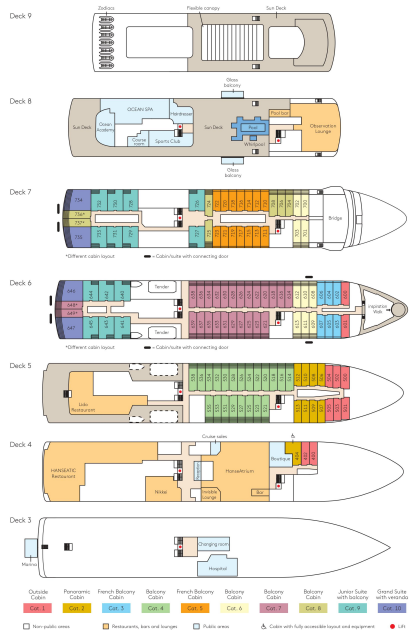
Small Ships, Big Adventures

wildearth-travel.com

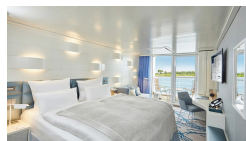
info@wildearth-travel.com

INSIDE YOUR SHIP

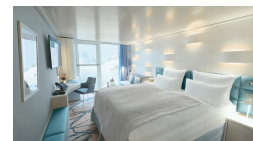
Deck plan HANSEATIC inspiration



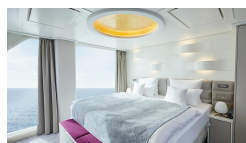
Balcony Cabin



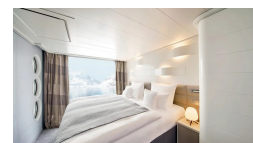
French Balcony Cabin



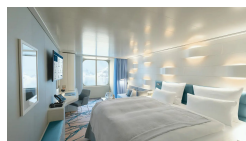
Grand Suite



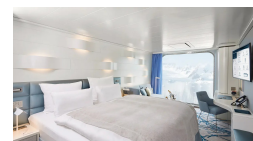
Junior Suite



Outside Cabin



Panoramic Cabin



Wild Earth Travel
Small Ships, Big Adventures

0800 945 3327 (within New Zealand) | +64 (0) 3 365 1355 | 1800 107 715 (within Australia)

info@wildearth-travel.com | wildearth-travel.com



wildearth-travel.com

info@wildearth-travel.com

PRICING

19-Sep-2026 to 07-Oct-2026

Outside Cabin	13690 EUR pp
Panoramic Cabin	14720 EUR pp
French Balcony Cabin	15170 EUR pp
Balcony Cabin	0 pp
Junior Suite	0 pp
Grand Suite	0 pp

07-Oct-2026 to 25-Oct-2026

Outside Cabin	11890 EUR pp
Panoramic Cabin	11890 EUR pp
French Balcony Cabin	14870 EUR pp
Balcony Cabin	16220 EUR pp
Junior Suite	21920 EUR pp
Grand Suite	0 pp

01-Oct-2027 to 19-Oct-2027

Outside Cabin	12990 EUR pp
Panoramic Cabin	12990 EUR pp
French Balcony Cabin	16120 EUR pp
Balcony Cabin	17440 EUR pp
Junior Suite	24070 EUR pp
Grand Suite	0 pp