



## GREAT LAKES: PIONEERING SPIRIT ON SCENIC LAKES

Zodiac rides, hikes and coastal towns: the Great Lakes beckon with breathtaking discoveries. Crowned by exciting expedition days on Lake Superior, this cruise will fulfil every adventurer's dream and create lasting memories of exploration.



### ITINERARY

#### Day 1 Milwaukee/Lake Michigan/USA

Overnight stay on board

#### Day 2 Milwaukee/Lake Michigan/USA

Departure 13.30 hrs

#### Day 3 Mackinac Island/Lake Huron

09.00 - 19.00 hrs

Mackinac Island is a natural jewel and is considered to be one of the most beautiful islands in the USA. Life still moves at a slow pace here. The streets are filled with the ringing of bicycle bells, the clattering of horses' hooves and the rattling of carriages - because this little idyll is car-free. The historic Fort Mackinac from the time of the American War of Independence perches majestically high up on a cliff. It tells the story of 1812, when the original



buildings, which are still preserved today, were conquered by the British. The Victorian villas and the island's grand hotel tell of the 19th century. The spacious Marquette Park, the marina and the city centre with its many shopping opportunities and restaurants underline how beautiful the present is. Enjoy Mackinac Island fudge, a world-famous sweet speciality.

### Days 4 - 5 Lock passage through the Sault Ste. Marie Canal

Lake Superior/USA (Marquette, Bayfield)

Your lock passage through the Sault Ste. Marie Canal is like a journey through time. While you watch the captain and crew manoeuvre the ship through the lock gates, experts on board will tell you all about the history of the canal. The historic Power House, with its original 19th-century machinery, is a reminder that it was once the world's first power-operated lock. Even today, the Soo Locks are still the largest lock system in the world and a masterpiece of engineering. As you stand on deck, the 2,000-year-old culture of the Indigenous peoples living here will pass before your eyes. On the Sault Ste. Marie Canal, Canada's past and present merge impressively.

The small town of Marquette welcomes you on the shores of Lake Superior. Once a centre of iron mining, today you can relieve stress here - for example, by hiking to numerous waterfalls and taking part in other outdoor activities. The Marquette Harbor Lighthouse, the 19th-century lighthouse painted bright red, signals how maritime heritage is preserved on the Great Lakes. As you stroll along the coast and through the laid-back city, the state of Michigan shows itself from its most beautiful side.

Charming Bayfield is the ideal starting point for numerous excursions into nature. It is the gateway to the spectacular Apostle Islands\*, a group of 22 islands in Lake Superior. The town itself boasts historic architecture, picturesque streets and a vibrant arts scene. With its mix of natural beauty and cultural charm, it's an essential stop on your cruise. The region is also a paradise for ornithologists: from on board, you can observe the bird life with your experts - the islands are known as a nesting site for herring gulls, black-legged terns, cormorants and grey herons.

### Days 6 - 9 Expedition days on Lake Superior/Canada

(Silver Islet, Red Rock, Terrace Bay, Battle Island, Slate Island)

Look forward to exciting days exploring Lake Superior. Only a few cruise ships

travel as far as Lake Superior. It is the largest of the Great Lakes and the second-largest freshwater area in the world. Here on board, you will be a total of about 180 m (591 ft) above the sea level of the Atlantic, which is an impressive difference in altitude for a ship - and unique on a cruise.

The small peninsula of Silver Islet was the epicentre of silver mining at the end of the 19th century, with one of the most important mines in Canada. It is a privilege for you to explore the site as only 20 ships a year are allowed to call here. With so many hiking trails on the peninsula, you could spend the whole day hiking - for example, on the Sea Lion Trail that runs parallel to the water. In the afternoon, you can board the Zodiacs to explore the region from the water. Weather permitting, you can even see the shaft of the mining operation.

The charming small township of Red Rock is known for its personal atmosphere, where the locals give you a very friendly welcome. Your experts will take you on impressive hikes directly from the ship, for example, on the Red Rock Mountain Loop, a scenic circular trail along the mountain ridges and valleys. Along the way, you will be introduced to the geological features of the region. You can also learn more about the flora and fauna in the black bear areas as well as the history of the township at the city's visitor centre.

Terrace Bay is idyllically situated on the northern shore of Lake Superior. Explore the picturesque town directly from the pier. On your own or with your experts, experience the wonderful nature on numerous hiking trails, where black bears and moose may also be spotted. Along the coastline, the boardwalk invites you to take a beautiful walk that perfectly showcases the region's natural beauty. At the end of the boardwalk, there is a forest and also the entrance to the Red Chair Trail: this scenic hike takes you through a quiet, wooded area to enjoy fantastic views of the bay and ship or to the historic lighthouse and rushing waterfalls - indeed, the journey is the destination.

Just landing on Battle Island in a Zodiac is an extraordinary experience. As you pass between two islands, you can enjoy the view of the rocky, rugged coastline, which suggests that there are many opportunities for hiking. And indeed, the island invites you to exciting explorations on foot. A wonderful hiking trail leads you through a magical forest to the 19th-century lighthouse. It sits perched high up on the cliffs as an iconic landmark for the many stories of Lake Superior, which a Native American tells here at the fog house in summer.

The Zodiacs are perfect for exploring the Slate Islands Provincial Park. A region of many small islands covered with trees up to the waterline, just waiting to be discovered. Your adventure is close to nature and will take you into the habitat of numerous animals such as the rare coastal wolf. The Zodiacs will carefully navigate you through the shallow water of the rocky coastline. A wilderness



that will stir your emotions, whether you are seeking adventure or relaxation.

### Day 10 Sault Ste. Marie

08.00 - 17.00 hrs

Moving from nature to culture, the route takes you to Sault Sainte Marie in Canada. The city shares a significant past with the American city of the same name on the other side of the Saint Marys River, which forms the state border. This was not always the case: the division only occurred after the American Revolutionary War. Take advantage of your stay to discover the history and way of life in the area. Small art galleries, restaurants and cafes create a warm, welcoming atmosphere, and walks take you to see historic locks and buildings from the early 1800s. The bushplane museum, dedicated to the history of seaplanes and aviation in Canada, is also worth a visit. In addition, the city is a starting point for a variety of excursions\* offering a great mix of history, nature and outdoor experiences.

### Day 11 Tobermory/Lake Huron

08.00 - 19.00 hrs

During your cruise across Lake Huron, you will reach the small fishing village of Tobermory. The picturesque town is located in the middle of the protected Fathom Five National Marine Park and invites you to stroll down and linger on its harbour promenade with local arts and crafts shops, cafes and restaurants. Along the coast, dramatic cliffs and towering monoliths rise out of the water, interspersed with caves and lighthouses. The sight of small coves with their turquoise water will make you think you're in the Caribbean. Green forests, home to black bears, white-tailed deer and hundreds of other animals, are abundant close to the shore. In addition, around 40 species of wild orchids can be found here. A stage of the Bruce Trail offers a variety of landscapes and spectacular views of Georgian Bay. A true paradise for hiking lovers, the region offers a variety of trails for activities that will be enriched by your experts' knowledge of natural history. There is something for everyone here - a must for nature and outdoor lovers.

### Day 12 Parry Sound

08.00 - 18.00 hrs

The charming town of Parry Sound is located in the heart of Georgian Bay in an archipelago with Scandinavian allure. In this area, which has been declared a UNESCO Biosphere Reserve, some 30,000 islands lie close together. The scenic approach through a small lagoon brings you ashore. It is the ideal place for many outdoor activities such as canoeing, kayaking and hiking. You can explore the shore on foot along the Marine Walking Trails, with captivating views of the cliffs and lake. With luck, you might also catch a glimpse of the wildlife of Georgian Bay, which is sometimes referred to as the sixth Great Lake. The incomparable feeling of freedom and discovery is what makes the region around Parry Sound so unique.

### Day 13 Killarney

07.00 - 18.00 hrs

The quaint town of Killarney, with a population of barely 500, has its Irish roots in its name. Just imagine how overwhelmed the first settlers and trappers must have felt here by the vastness and the sense of freedom. It is Ontario's little secret in the midst of a colourful wilderness: from the white quartzite of the mountains to the pink granite of the rocks and the indigo blue of the lake. An expedition area that is second to none. An invitation for you to take walks and linger. From the promenade, a hiking trail leads to the region's landmark, the Killarney Lighthouse. Or take the shuttle bus to Killarney Provincial Park for hikes with your experts to gain a deeper understanding of this untouched wilderness. The calm waters here also offer the opportunity to enjoy Georgian Bay on a Zodiac ride with beautiful scenery and good chances for wildlife sightings - with a bit of luck, you'll see cormorants, Canada geese and bald eagles.

### Day 14 Relaxation at sea

### Day 15 Milwaukee/Lake Michigan/USA

Arrival 07.00 hrs

Please note:





# Wild Earth Travel

*Small Ships, Big Adventures*

**wildearth-travel.com**

**info@wildearth-travel.com**

Itineraries are subject to change.

**Wild Earth Travel**  
*Small Ships, Big Adventures*

**0800 945 3327** (within New Zealand) | +64 (0) 3 365 1355 | **1800 107 715** (within Australia)

info@wildearth-travel.com | **wildearth-travel.com**



**wildearth-travel.com**

**info@wildearth-travel.com**

## YOUR SHIP: HANSEATIC INSPIRATION/NATURE/SPIRIT

<b>YOUR SHIP:</b>	<b>Hanseatic Inspiration/Nature/Spirit</b>
<b>VESSEL TYPE:</b>	<b>Expedition</b>
<b>LENGTH:</b>	<b>138 m</b>
<b>PASSENGER CAPACITY:</b>	<b>230</b>
<b>BUILT/REFURBISHED:</b>	<b>2021</b>

The HANSEATIC inspiration, a small, state-of-the-art expedition ship with a maximum of 230 guests, offers a perfect blend of adventure and comfort for explorers seeking to uncover the world's wonders. As an international vessel conducting cruises in both English and German, it brings over 30 years of expertise from a market leader in German-speaking countries to every journey. Each expedition is a masterpiece, passionately crafted to reveal far-flung worlds--be it icy realms, tropical paradises, wildlife havens, or cultural gems--making every voyage a unique discovery aboard this exceptional ship.

Features of all cabins and suites

An ocean view with even more: exclusively outside cabins and suites, almost all with balconies or French balconies

Spaciously designed - enjoy a relaxing stay in rooms from 21 m<sup>2</sup>/226 ft<sup>2</sup> up to 71 m<sup>2</sup>/764 ft<sup>2</sup> in size

Exceptionally equipped - for example, with binoculars, Nordic Walking poles, air conditioning, coffee machine and mini bar (free of charge) and 24-hour cabin service

Separable beds

Rain shower and heated wall in bathroom (e.g. for towels and

wet parkas)

Extensive infotainment with live broadcast and recordings of expert presentations, forwardview camera, navigation chart, films and much more

Restaurants

Aboard the HANSEATIC inspiration, a new kind of freedom blends adventure and pleasure with a culinary journey across three exceptional restaurants. The spacious HANSEATIC Restaurant offers flexible mealtimes and a free choice of seating, serving a daily-changing menu of global flavors inspired by local specialties, paired with fine wines and supported by attentive 24-hour cabin service. At the Lido Restaurant, guests can savor breakfast under the open sky or enjoy a perfectly grilled steak from the outdoor barbecue, complete with panoramic views and an open show kitchen. The specialty restaurant Nikkei fuses fine Japanese creations with modern Peruvian cuisine, delivering a unique dining experience that elevates exploration to new heights--all while bars in the Observation Lounge and HanseAtrium offer favorite drinks against stunning backdrops, from Nordic fjords to icy Antarctic vistas.

Fitness and Wellness

On the HANSEATIC inspiration, an extraordinary time out awaits after thrilling Zodiac rides, challenging hikes, or Arctic adventures. Unwind in the Ocean Spa, where a Finnish sauna with stunning ocean views, a gentle steam sauna, an ice fountain, and a relaxation room rejuvenate your senses, complemented by professional massages, cosmetic treatments, and eco-friendly products made from natural, vegan ingredients.



# Wild Earth Travel

*Small Ships, Big Adventures*

**wildearth-travel.com**

**info@wildearth-travel.com**

Stay active in the 100 m<sup>2</sup> fitness room or separate course room--both with ocean vistas--guided by a fitness coach offering personalized advice and a variety of courses, either indoors or on deck. The pool area, with its flexible canopy, invites relaxation year-round, featuring water loungers, a whirlpool, and a bar, ensuring a perfect blend of indulgence and revitalization against the backdrop of the open sea.

#### Knowledge

Shore excursions and Zodiac rides come alive with deeper context through fascinating presentations in the HanseAtrium, a high-tech lounge where experts share daily precaps and recaps, doubling as an atmospheric evening bar for films and discussions. The Ocean Academy enhances the journey with a Study Wall and interactive poster of scientific insights, microscopes for exploring hidden wonders alongside experts, and Study Seats--with swivel touchscreens--for personal dives into science. Supported by travel diaries and destination videos, this immersive experience broadens horizons with cutting-edge tools and expertise.



expertise.

**Wild Earth Travel**

*Small Ships, Big Adventures*

**0800 945 3327** (within New Zealand) | +64 (0) 3 365 1355 | **1800 107 715** (within Australia)

info@wildearth-travel.com | **wildearth-travel.com**



# Wild Earth Travel

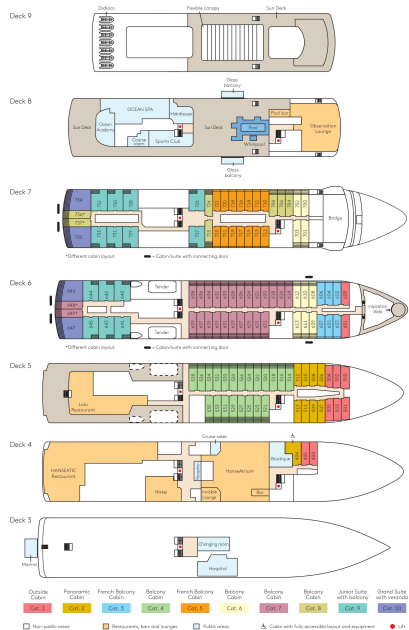
*Small Ships, Big Adventures*

[wildearth-travel.com](http://wildearth-travel.com)

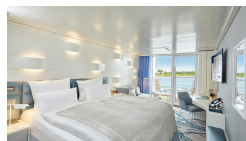
[info@wildearth-travel.com](mailto:info@wildearth-travel.com)

## INSIDE YOUR SHIP

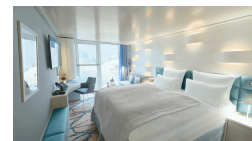
Deck plan HANSEATIC inspiration



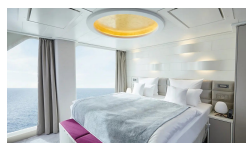
Balcony Cabin



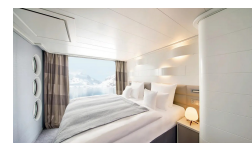
French Balcony Cabin



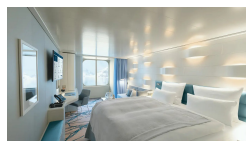
Grand Suite



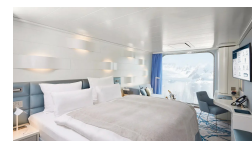
Junior Suite



Outside Cabin



Panoramic Cabin





**wildearth-travel.com**

**info@wildearth-travel.com**

## PRICING

### 20-Aug-2027 to 03-Sep-2027

Outside Cabin	9490 EUR pp
Panoramic Cabin	9490 EUR pp
French Balcony Cabin	11820 EUR pp
Balcony Cabin	12820 EUR pp
Junior Suite	17720 EUR pp
Grand Suite	24020 EUR pp

### 03-Sep-2027 to 17-Sep-2027

Panoramic Cabin	9490 EUR pp
Outside Cabin	9490 EUR pp
French Balcony Cabin	11820 EUR pp
Balcony Cabin	12820 EUR pp
Junior Suite	17720 EUR pp
Grand Suite	24020 EUR pp

### 17-Sep-2027 to 01-Oct-2027

Outside Cabin	9490 EUR pp
Panoramic Cabin	9490 EUR pp
French Balcony Cabin	11820 EUR pp
Balcony Cabin	12820 EUR pp
Junior Suite	17720 EUR pp
Grand Suite	24020 EUR pp