

Wild Earth Travel

Small Ships, Big Adventures

wildearth-travel.com

info@wildearth-travel.com

HIDDEN PEARLS OF THE AEGEAN SEA - GREEK ISLES SAILING CRUISE FROM ATHENS

Embark on an extraordinary journey from the Peloponnese to the Cyclades, exploring Greece's most captivating harbors and island towns. Begin in Athens and sail to Nauplio, where you can delve into the ancient fortress city of Mycenae. Marvel at Monemvasia, known as the Gibraltar of Greece, with its Byzantine rock fortress. Discover the hidden gems of the Cyclades, including Milos, Amorgos, and Syros, where you'll find stunning landscapes and rich history. Visit the rock monastery of Panagia Hozovitissa in Amorgos and the Monastery of St. John on Patmos before returning to Athens. A journey filled with ancient wonders and breathtaking scenery awaits.



ITINERARY

Day 1 Athens (Piraeus), Greece

Departure 7:00 pm

"A ship will come...", declared the singer Melina Mercouri to the port of Piraeus. Later, as Greek Minister for Culture, she made Athens the first European Capital of Culture in 1985. The city is considered the birthplace of Europe, of philosophy and of democracy, and is the embodiment of the Olympic ideal. World-famous and a UNESCO World Heritage Site since 1987, its landmark is the magnificent Parthenon temple, lying high up on the

Wild Earth Travel

Small Ships, Big Adventures

0800 945 3327 (within New Zealand) | +64 (0) 3 365 1355 | **1800 107 715** (within Australia)

info@wildearth-travel.com | **wildearth-travel.com**



Wild Earth Travel

Small Ships, Big Adventures

wildearth-travel.com

info@wildearth-travel.com

Acropolis in all its glory. At the foot of the Acropolis hill is the Plaka, the oldest quarter of Athens, and the world's most modern archaeological museum, the new Acropolis Museum, has been here since 2009.

Day 2 Day under full sails

Climbing the rigging, untying ropes, setting sails - today is all about sailing. Time to lean back and relax in the deck chair and watch the passionate crew hoisting the sails by hand.

Day 3 Nauplio, Peloponnese

Arrival 8:00 am, Departure 6:00 pm

The old town of Nauplio has a picturesque peninsula setting and three Venetian fortresses guard the pretty town. In ancient times, the excavation site of Mycenae, a UNESCO World Heritage Site, was one of the most important towns in Greece. Its legendary king, Agamemnon, has a large role in Homer's Iliad. The palace grounds were surrounded by a cyclopean stone wall. Now you can only gain entrance through the famous Lion Gate. In Epidaurus, also protected by UNESCO, the impressive 14,000-seat theatre is one of the most important buildings in this archaeological site.

Day 4 Monemvasia, Peloponnese

Arrival 8:00 am, Departure 1:30 pm

The little town of Monemvasia nestles closely against a rock that lies just off the coast. This impregnable fortress was an important trading center in Byzantine times. Today it is a retreat for wealthy Athenians who spend their weekends here. Behind its walls you can discover the beautifully restored lower town, where you simply want to drift along the tranquil narrow lanes. This picturesque little town on a rock transports you back in time to the romantic Middle Ages, when it was exceptionally modern and lively.

Day 5 Milos, Cyclades

Arrival 8:00 am, Departure 1:30 pm

The unique character of Milos' landscape was formed by volcanic activity. Hot springs, spectacular cliffs and distinctive rock formations give the various beaches their own individual character. The colors of Milos are most obvious where the water meets the stone and forms the coastline. Minerals have colored the sand and stones and each rock along the coastline seems to glow in a different color. Plaka, the picturesque old capital with its typical dazzling-white houses, is overlooked by a mighty castle which offers a superb view over Adamos Bay and the surrounding islands.

Day 6 Astypalaia, Dodecanese

Arrival 1:30 pm, Departure 11:00 pm

Does it still exist, a real insider tip in Greece? Astypalaia seems to be one of these places that have become rare. From above, the small island jewel looks like a butterfly that has landed on the blue waters of the Aegean Sea. Since the journey to Astypalaia is a bit tedious - if you are not just relaxed with the windjammer on the way - the little island is spared from tourist crowds and has been able to preserve its original charm. Thus, between countless beaches, crystal clear water, snow-white alleys and red windmill roofs, even as a guest you quickly become part of the typical Greek island everyday life.

Day 7 Patmos, Dodecanese

Arrival 8:00 am, Departure 1:30 pm

The idyllic little island of Patmos houses one of the most important monasteries of the Greek Orthodox church. The monastery of St John is a World Heritage Site, protected by UNESCO. It was built in honour of the Apostle John, who is said to have lived in a cave on the island. It is also said that he wrote down his Revelation of the Apocalypse there. The whole island is considered holy ground and is one of the most important pilgrimage sites in the Greek Orthodox world.

Day 8 Amorgos, Cyclades

Wild Earth Travel

Small Ships, Big Adventures

0800 945 3327 (within New Zealand) | +64 (0) 3 365 1355 | **1800 107 715** (within Australia)

info@wildearth-travel.com | wildearth-travel.com



Wild Earth Travel

Small Ships, Big Adventures

wildearth-travel.com

info@wildearth-travel.com

Arrival 8:00 am, Departure 1:30 pm

At 300 meters above the deep blue sea, the monks are very close to heaven. The white monastery of Panagia Hozovitissa almost seems to grow out of the steep cliffs, so high and narrow is it. Its eight floors are connected by a labyrinth of corridors, and every now and then you catch a breath-taking view of the vastness of the Aegean Sea through a rock window. The magical cliff-top monastery is the best-known highlight of Amorgos, but beyond this architectural marvel, the charm of the Cycladic Island also enchants - with remote little mountain villages, old stone windmills and the scent of wild oregano.

Itineraries are subject to change.

Day 9 Syros, Cyclades

Arrival 8:00 am, Departure 1:30 pm

Although the capital of the Cyclades is situated on the tranquil and traditional island of Syros, outside of the town this seems the most remote island of them all. Ermoupoli, one of the most beautiful island towns in Greece, was built majestically on two hills. Its architecture is exceptional and the numerous monumental neo-classical buildings give the impression of a large, elegant town. Passing over the hill, the spaciousness and vastness transform into a maze of lanes and give a medieval impression.

Day 10 Athens (Piraeus), Greece

Arrival 7:00 am

"A ship will come...", declared the singer Melina Mercouri to the port of Piraeus. Later, as Greek Minister for Culture, she made Athens the first European Capital of Culture in 1985. The city is considered the birthplace of Europe, of philosophy and of democracy, and is the embodiment of the Olympic ideal. World-famous and a UNESCO World Heritage Site since 1987, its landmark is the magnificent Parthenon temple, lying high up on the Acropolis in all its glory. At the foot of the Acropolis hill is the Plaka, the oldest quarter of Athens, and the world's most modern archaeological museum, the new Acropolis Museum, has been here since 2009.

Please note:

Wild Earth Travel

Small Ships, Big Adventures

0800 945 3327 (within New Zealand) | +64 (0) 3 365 1355 | **1800 107 715** (within Australia)

info@wildearth-travel.com | **wildearth-travel.com**

YOUR SHIP: SEA CLOUD

YOUR SHIP:	Sea Cloud
VESSEL TYPE:	Tall Ship (Sailing)
LENGTH:	109 metres
PASSENGER CAPACITY:	64
BUILT/REFURBISHED:	1931 / 2011

Sea Cloud is a ship with a soul, imbued by the original owners, Marjorie Merriweather Post and her husband E.F. Hutton in the 1930's. The ship has played host to royalty, known service in wartime, and sailed the world over. She is a vessel of incomparable grace that harks back to the golden age of ship travel. Once you've been on _Sea Cloud_ under full sail, you'll begin your own love affair.

Welcome aboard a legend

Sea Cloud accommodates 58 guests in 28 outside cabins including two original owner's suites that still feature original marble baths and fireplaces. At 360 feet she is an expansive ship with extensive public spaces on the top deck, where we luxuriate in deck chairs and watch the crew of 18 go aloft in the web of riggings to hand-set her 30 sails. Her dining room is hung with marine oil paintings of the period and accommodates all guests at once for a single seating. We'll gather in the lounge each evening for Recap. Life aboard is a uniquely pleasing mix of elegance and informality--a return to the golden age of sailing in shorts and deck shoes. You'll find all shipboard services impeccable.

Discover the romance of tall ship sailing

Experience something many people don't know exists in the 21st century--the romance of life under square sails. Discover the thrill of standing on deck as _Sea Cloud_ gently glides through the water, her crew aloft in the riggings, running out and reefing sails. Settle in to your favorite areas on the top deck and bask in the incomparable experience of traveling aboard the finest tall ship to ever sail the seas. Lose yourself in an adventure that, in this day and age, is almost unimaginable. Please note deck and suite plans are indicative only and may vary slightly.



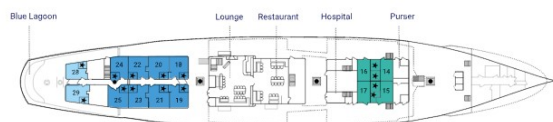
y slightly.

INSIDE YOUR SHIP

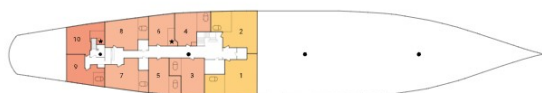
Captain's and Lido Deck



Promenade Deck



Main Deck



- | | | | | |
|------------|-------------------------|------------|--|--------------------------------------|
| Category A | Luxury owner's cabins | Category 2 | Twin-bed cabins, (beds can be placed together) | ☐ Cabins with a bath, shower and W/C |
| Category B | De luxe original cabins | Category 3 | Twin-bed cabins | ☐ Cabins with a shower and W/C |
| Category C | De luxe outside cabins | Category 4 | Twin-bed cabins | ● Mass |
| Category 1 | Double-bed cabins | Category 5 | Upper/lower-bed | |

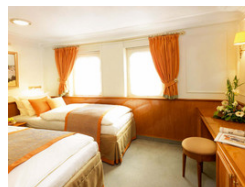
Category 1. From



Category 2. From



Category 3. From



Category 4. From



Category 5. From



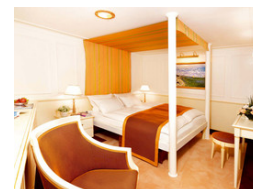
Category A. From



Category B. From



Category C. From



Wild Earth Travel

Small Ships, Big Adventures

wildearth-travel.com

info@wildearth-travel.com

PRICING

26-Jun-2025 to 05-Jul-2025

GTY Double Cabin. From	5575 EUR pp
Category 5. From	6315 EUR pp
Category 4. From	7435 EUR pp
Category 3. From	8545 EUR pp
Category 2. From	9265 EUR pp
Category 1. From	9735 EUR pp
Category C. From	11225 EUR pp
Category B. From	11955 EUR pp
Category A. From	12795 EUR pp

05-Jul-2025 to 14-Jul-2025

GTY Double Cabin. From	5575 EUR pp
Category 5. From	6315 EUR pp
Category 4. From	7435 EUR pp
Category 3. From	8545 EUR pp
Category 2. From	9265 EUR pp
Category 1. From	9735 EUR pp
Category C. From	11225 EUR pp
Category B. From	11955 EUR pp
Category A. From	12795 EUR pp

23-Jul-2025 to 01-Aug-2025

GTY Double Cabin. From	5575 EUR pp
Category 5. From	6315 EUR pp
Category 4. From	7435 EUR pp
Category 3. From	8545 EUR pp
Category 2. From	9265 EUR pp
Category 1. From	9735 EUR pp
Category C. From	11225 EUR pp
Category B. From	11955 EUR pp
Category A. From	12795 EUR pp

01-Aug-2025 to 10-Aug-2025

GTY Double Cabin. From	5575 EUR pp
Category 5. From	6315 EUR pp
Category 4. From	7435 EUR pp
Category 3. From	8545 EUR pp
Category 2. From	9265 EUR pp
Category 1. From	9735 EUR pp
Category C. From	11225 EUR pp
Category B. From	11955 EUR pp
Category A. From	12795 EUR pp

Wild Earth Travel

Small Ships, Big Adventures

0800 945 3327 (within New Zealand) | +64 (0) 3 365 1355 | **1800 107 715** (within Australia)

info@wildearth-travel.com | wildearth-travel.com