



Wild Earth Travel

Small Ships, Big Adventures

wildearth-travel.com

info@wildearth-travel.com

IBERIAN SHORES - LUXURY CRUISE TO SPAIN & PORTUGAL

Gastronomic cruise in partnership with Relais & Chateaux and with featured guest chef Joao Oliveira from the Bela Vista Hotel & Spa.

PONANT invites you to discover sumptuous landscapes and exceptional cities during an 9-day cruise between Portugal and Spain. Be inspired by this unforgettable journey aboard Le Laperouse as you visit major cities of the Iberian Peninsula.

Throughout your journey, you will benefit from an excursion included per person per port of call, to choose from a selection offered by PONANT. During this cruise, discover the Sagres fort, near Lagos; attend a cavalcade at a finca in Cartagena; or head off to admire one of the Cadiz region's prettiest villages during a panoramic walk. The diversity of experiences on offer promises you intense and varied moments (to discover the full range of excursions, go to the itinerary tab).

Setting sail from Lisbon, the seven-hilled Portuguese capital, you will head south to the beautiful Algarve region and call in Lagos. Its rich maritime heritage and spectacular coastline make this pretty coastal town with its hidden charm so fascinating.

You will then travel to Cadiz, one of the country's oldest cities, built on a rock and surrounded by the sea. This call will allow those who wish to visit the superb city of Seville.

Le Laperouse will then chart a course towards Marbella where you can discover a rich ancient heritage, before sailing towards

Malaga, the lively cultural capital of the Costa del Sol. To the heart of the old town, its history can be read in its buildings, in particular the 10th century castle built by the Moors. You will also have the possibility of strolling through the picturesque town of Ronda and discovering its famous Puente Nuevo.

Further north, the coastline of Almeria's preserved beaches emerges before you. The easternmost Andalusian city has a remarkable citadel and a cathedral whose towering structure stands in the very heart of the historic centre edged with narrow alleyways and traditional houses with whitewashed walls.

After a port of call in Cartagena, a city with a rich ancient heritage dating back to the Carthaginians and the Romans, you will head for Valencia, a city boasting remarkable architectural heritage.

Finally, you will sail towards Barcelona, your disembarkation port.

Wild Earth Travel

Small Ships, Big Adventures

0800 945 3327 (within New Zealand) | +64 (0) 3 365 1355 | **1800 107 715** (within Australia)

info@wildearth-travel.com | **wildearth-travel.com**

Wild Earth Travel

Small Ships, Big Adventures

wildearth-travel.com

info@wildearth-travel.com



ation port.

ITINERARY

Day 1 LISBON

Portugal's capital city located on the banks of the Tagus, only a few kilometres from the Atlantic coast, is a city of exceptionally rich cultural diversity. At the mouth of the river harbour, impose two UNESCO World Heritage monuments, Jeronimos monastery and Belem tower. The Alfama hillside is also worth visiting: known for its fado bars and its Moorish streets, this district is the oldest one of the city and one of the most typical. Not far from there, Chiado's elegant streets are home to big fashion labels and are an invitation to a bit of luxury shopping.

Day 2 LAGOS

There stands a natural paradise called Lagos, bordered by the Atlantic Ocean, in the Algarve region of southern Portugal. With its picturesque and age-old

town centre, and the Ponta da Piedade natural site sheltering paradisiacal beaches protected by captivating limestone cliffs in hues of ochre, Lagos enthral, fascinates and enchants. In this interesting blend between nature and culture, do not miss the chance to stroll along the small paved streets of its historic centre, surrounded by impressive Moorish ramparts and edged with traditional white houses, with decorations sculpted in the stone. In particular, you will be able to admire the Manuelian-style Governor's Castle, the 17th-century Ponta da Bandeira Fort or the Church of Santo Antonio in Baroque architecture.

Day 3 CADIZ

Andalusia's Cadiz is located on the Costa de la Luz, in the south-west of Spain. From the beaches of Cortadura, to the flamenco bars of Santa Maria, through the colourful streets of la Viña, you will be amazed by this city, which is both steeped in history and extremely festive. In the medieval El Populo district, you will stroll along covered passages in the narrow gaps between houses. You will also be able to mosey around the lush Mina square. The star of the show is the magnificent cathedral and its dome crowned with yellow porcelain, presiding above the Ocean.

Day 4 MARBELLA

In the province of Malaga, Marbella is a renowned seaside resort on the Costa del Sol. The remains of early Christian and Roman sites around this former mining town, located at the foot of the Sierra Blanca mountains, bear witness to a rich history. With its white houses on flowery little streets, the old town is perfect for a pleasant stroll. The Plaza de los Naranjos, former focal point of the city, is near the 10th-century Arabic castle and the Church of Santa Maria de la Encarnacion. Not far from here, you'll be able to discover the magnificent viewpoints offered by Ronda, a picturesque town perched 700 metres (2,296 feet) high. Its Puente Nuevo bridge majestically crosses the gorges of the Guadalevin River that cuts the town in two.

Day 5 MÁLAGA

A historical and festive town, Malaga is located in Andalusia, on the Costa del Sol. Between the marina and the beaches, the seaside promenade of La Farola offers an ideal setting for strolling and relaxing. Set slightly further back, the Malagueta bullring is one of the emblematic sites of the city. From the hill

Wild Earth Travel

Small Ships, Big Adventures

0800 945 3327 (within New Zealand) | +64 (0) 3 365 1355 | 1800 107 715 (within Australia)

info@wildearth-travel.com | wildearth-travel.com



Wild Earth Travel

Small Ships, Big Adventures

wildearth-travel.com

info@wildearth-travel.com

overlooking the old town, one can see Gibralfaro castle and the Alcazaba, two fortified ensembles rising out from the cypresses and maritime pines. To visit Pablo Picasso's birthplace, you will go first to the courtly plaza de la Merced. A few streets back from here, you can explore the museum dedicated to the artist, in the Buenavista palace.

Day 6 ALMERIA

On the Mediterranean shore, the easternmost Andalusian capital, the legendary Almería (from the Arab Al-Mariy-yat, meaning watchtower), has a coastline of preserved beaches with an interior characterised by its typical desert ecosystem. In the past an important port for the Caliphate of Cordoba, Almería has a remarkable citadel and a cathedral whose imperious structure stands in the very centre of the old town. This old town, with its narrow streets, will charm you with its lime washed walls and its rich historical and cultural heritage.

Day 7 CARTAGENA

Surrounded by hills, the natural site of the Bay of Cartagena presided over the fate of this former fortress which has been home to the greatest European civilisations. Today, these Phoenician, Roman, Carthaginian, Moorish and Christian influences form a rich architectural heritage. Its Roman theatre is one of the most significant and best conserved in Spain. You will also be able to cross the landscapes of vines and citrus groves stretching endlessly towards Murcia, to visit this dynamic regional capital.

Day 8 VALENCIA

Valencia - the city of Art and Sciences. Two hearts beat in this Spanish city: one is modern, avantgarde and almost futuristic; the other is more provincial, more traditional and nostalgic. Valencia has the temperament of a great Mediterranean city whose wide avenues form a border around the old town. The city has an abundance of architectural styles that coexist harmoniously, but above all it resolutely embraces the 21st Century with the futuristic structures of its Agora congress centre and City of Arts and Sciences, emerging from a crystal blue pool.

Day 9 BARCELONA

Located on the seashore between the mountains of Montjuic and Tibidabo, Barcelona offers its many visitors a perfect blend of tradition and modernism. Truly an open-air museum, the "prodigious town" reveals an astonishing range of artistic treasures and museums, combining Roman ruins, medieval districts and a number of avant-garde elements from the 20th Century. Over the years, it has been marked by some of the greatest artists, such as Picasso, Miro or Gaudi, most of whose work has been listed as World Heritage Sites by UNESCO. Take the time to stroll along the Ramblas and enjoy the gentle, typically Mediterranean lifestyle of the capital of Catalonia.

Please note:

Itineraries are subject to change.

Wild Earth Travel

Small Ships, Big Adventures

0800 945 3327 (within New Zealand) | +64 (0) 3 365 1355 | **1800 107 715** (within Australia)

info@wildearth-travel.com | **wildearth-travel.com**



Wild Earth Travel

Small Ships, Big Adventures

wildearth-travel.com

info@wildearth-travel.com

YOUR SHIP: LE LAPEROUSE

YOUR SHIP:	Le Laperouse
VESSEL TYPE:	Luxury
LENGTH:	127 metres
PASSENGER CAPACITY:	92 cabins
BUILT/REFURBISHED:	2017/2018

Featuring innovative and environmentally-friendly equipment, elegantly designed cabins, spacious suites with large windows, and lounge areas that open onto the outside, this new limited-capacity yacht boasting just 92 cabins and suites will offer you a truly unique cruising experience.

Aboard this ship that flies the French flag, you will experience the incomparable pleasure of an intimate cruise, with the possibility of exploring an ever-increasing range of destinations in an ethnic-chic ambiance with luxury service.

Experience a luxurious setting where the accent is on authenticity and passion for travel.

RESTAURANTS

As it is an essential part of French culture, gastronomy will naturally have pride of place aboard this new ship. Through its two restaurants, Le Laperouse will invite you on a journey to elegance and epicureanism.

In a relaxed atmosphere, a first dining area located on Deck 3 and able to seat 70 will serve grilled meats daily, along with a variety of salads and desserts.

To the back of Deck 4, you will find a 260 m² panoramic restaurant which can accommodate all of our passengers in a

single sitting. Designed differently to that on our other ships, this dining area, which opens onto the outside, will have a buffet of salads, desserts and cheeses at your disposal. Our discreet and attentive crew will provide table service for hot meals.

PUBLIC AREAS

Like Le Boreal and its sisterships, Le Laperouse has many common areas that are designed and equipped to meet all of your needs while preserving the intimacy of each passenger.

A 140 m² reception area includes: A reception/concierge desk, An excursions desk, The ship's administrative services, The sales office, manned by our Guest Relations Officer, Our 50 m² boutique which sells clothing, jewellery, beauty products, postcards and various accessories, Toilets accessible to passengers with reduced mobility.

A new hydraulic platform with adjustable height provides: Easier boarding than on any other cruise ship, Easier Zodiac embarkation and disembarkation for expeditions, Easier access to the sea for swimming and practising various water sports such as kayaking or paddle-boarding.

A pool deck offering: A pool with a panoramic view, equipped with a counter-current swimming system, A pleasant solarium, An outdoor bar and lounge with armchairs and sofas.

A 200 m² main lounge which can accommodate all of our passengers to share convivial moments and to host activities organised during the day or evening.

Lastly, a theatre that seats 188, equipped with: The latest sound and lighting technology, A LED wall as the stage backdrop, for the projection of high-resolution images and videos.

Wild Earth Travel
Small Ships, Big Adventures

0800 945 3327 (within New Zealand) | +64 (0) 3 365 1355 | **1800 107 715** (within Australia)

info@wildearth-travel.com | **wildearth-travel.com**



Wild Earth Travel

Small Ships, Big Adventures

wildearth-travel.com

info@wildearth-travel.com



and videos.

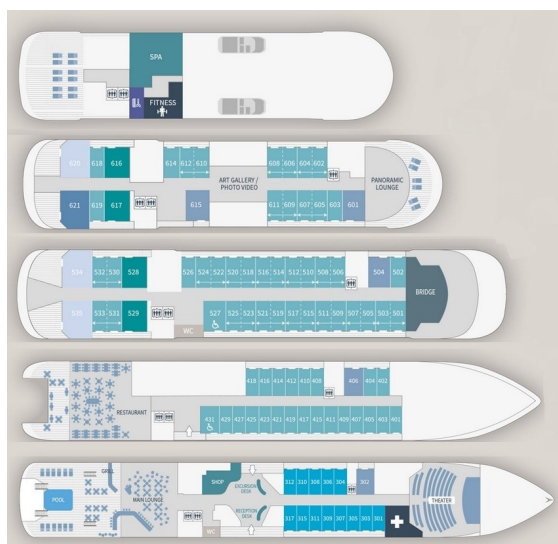
Wild Earth Travel

Small Ships, Big Adventures

0800 945 3327 (within New Zealand) | +64 (0) 3 365 1355 | **1800 107 715** (within Australia)

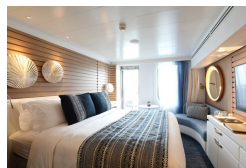
info@wildearth-travel.com | **wildearth-travel.com**

INSIDE YOUR SHIP

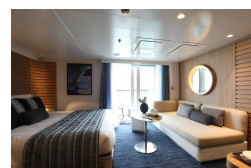


- Owner's Suite Deck 6
- Privilege Suites Deck 5-6
- Grand Deluxe Suites Deck 5-6
- Prestige Suites Deck 5-6
- Deluxe Suites Deck 5-6
- Prestige Cabins Deck 4-5-6
- Deluxe Cabins Deck 3

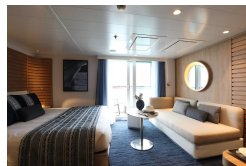
Deluxe Stateroom



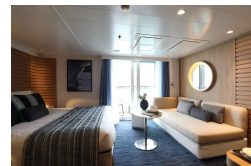
Deluxe Suite



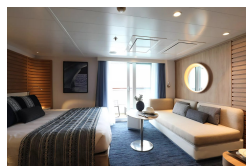
Deluxe Suite Deck 4



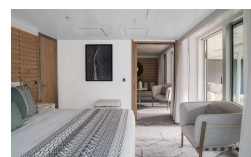
Deluxe Suite Deck 5



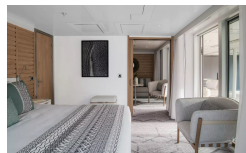
Deluxe Suite Deck 6



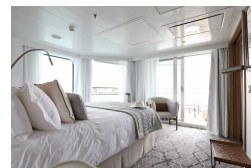
Grand Deluxe Suite



Grand Deluxe Suite Deck 6



Owner's Suite





Wild Earth Travel

Small Ships, Big Adventures

wildearth-travel.com

info@wildearth-travel.com

PRICING

24-Sep-2025 to 02-Oct-2025

Deluxe Stateroom	9310 AUD pp
Prestige Stateroom Deck 4	9810 AUD pp
Prestige Stateroom Deck 5	10300 AUD pp
Prestige Stateroom Deck 6	10890 AUD pp
Deluxe Suite Deck 5	17680 AUD pp
Deluxe Suite Deck 6	17680 AUD pp
Deluxe Suite Deck 4	17680 AUD pp
Deluxe Suite	17680 AUD pp
Prestige Suite Deck 5	19660 AUD pp
Prestige Suite Deck 6	20140 AUD pp
Privilege Suite	21130 AUD pp
Privilege Suite Deck 6	21130 AUD pp
Grand Deluxe Suite	25570 AUD pp
Owner's Suite	25570 AUD pp
Grand Deluxe Suite Deck 6	25570 AUD pp

ADDITIONAL CHARGES:

Port Taxes 590 AUD pp



Wild Earth Travel
Small Ships, Big Adventures

0800 945 3327 (within New Zealand) | +64 (0) 3 365 1355 | **1800 107 715** (within Australia)

info@wildearth-travel.com | **wildearth-travel.com**



Wild Earth Travel

Small Ships, Big Adventures

wildearth-travel.com

info@wildearth-travel.com

SPECIAL OFFERS

Online prices reflect the current brochure fare savings of up to 30%. Prices may change based on demand. Terms and conditions apply. This special offer is subject to availability. Please contact us for more details.

Optional extras & upgrades

2 Night Pre Cruise 5 Star Lisbon City Stay

Please enquire for more information

1 Night Post Cruise Barcelona City Stay

Please enquire for more information

Wild Earth Travel

Small Ships, Big Adventures

0800 945 3327 (within New Zealand) | +64 (0) 3 365 1355 | **1800 107 715** (within Australia)

info@wildearth-travel.com | **wildearth-travel.com**