



Wild Earth Travel

Small Ships, Big Adventures

wildearth-travel.com

info@wildearth-travel.com

ISLAND TREASURES OF INDONESIA & EAST TIMOR - 16 DAYS FROM BALI

PONANT invites you to set sail on a 16-day tropical expedition cruise aboard Le Laperouse discovering the stunning scenery of the Indonesian archipelago and East Timor. It is on these islands, scattered like a string of pearls at the far west of South-East Asia, that the fascinating transition from Asia to Oceania is most powerfully felt, through the peoples and landscapes encountered.

Timor, Flores, Sumbawa, Komodo, Banda Neira... Just mentioning these names is enough to conjure up images of spectacular blooms, wide emerald-coloured bays, island-volcanoes, villages peopled with inhabitants who have preserved their perennial traditions, and prehistoric animals. Not to mention hills covered in savannah, tropical forests, dazzling white sandy beaches and waves crashing down on the coral.

Your first port of call will be Flores, the flower island, followed by the Alor Archipelago, two destinations where the locals have successfully preserved their ancient, traditional way of life.

In the Moluccas (Maluku Islands), dubbed the Spice Islands, you will explore the island of Banda Neira, which was shaped by Dutch and Portuguese influences.

Le Laperouse will continue on to the Indonesian province of West Papua to give you the opportunity to admire the Kiti-Kiti Waterfall. Surrounded by lush vegetation, you will undoubtedly be tempted to swim or snorkel at the foot of this stunning natural site.

Then, you will sail to the heart of Triton Bay. Located within a protected marine environment in the middle of the Coral Triangle, you will enjoy an unforgettable zodiac cruise through the spectacular rainforest-capped karst islands.

You will reach a former Portuguese colony, and call at Baucau, between Portuguese atmosphere and beautiful sandy beaches. During your port of call in the Timorese capital, Dili will reveal to you the beauty of its intact landscapes, between tropical forest and immaculate sandy beaches, and also the riches of its historic and cultural heritage.

Le Laperouse will then make its way towards mysterious Komodo, a small, wild island whose national park is listed as a UNESCO World Heritage Site. Among other things, it is home to the famous Komodo dragons, gigantic monitor lizards that can grow more than three metres long. Here you will be able to see them in their natural environment.

Your ship will set sail for Badas on the island of Sumbawa. You will be welcomed by the inhabitants of Pamulung village, where you will be able to witness a traditional ceremony.

Your cruise will conclude in Bali - 'the island of the gods' - with its captivating charm and grace.

Wild Earth Travel

Small Ships, Big Adventures

0800 945 3327 (within New Zealand) | +64 (0) 3 365 1355 | **1800 107 715** (within Australia)

info@wildearth-travel.com | **wildearth-travel.com**

Wild Earth Travel

Small Ships, Big Adventures

wildearth-travel.com

info@wildearth-travel.com



and grace.

ITINERARY

Day 1 BENOA, BALI

If it's a taste of exotic authenticity you're after, prepare to be spell-bound by the island of Bali, tucked away in the heart of the Indonesian archipelago. The beauty and diversity of its landscapes, the depth and richness of its cultural heritage and the plethora of activities on offer here make Bali a little slice of heaven on Earth. The island's southern coast enthralls with its white sand beaches, its picturesque little fishing villages such as Benoa, and its hills patchworked with terraced rice paddies further inland. Nicknamed 'the Island of Gods' for its sumptuous temples, Bali is the beating heart of Indonesian Hinduism.

Day 2 AT SEA

During your journey at sea, make the most of the many services and activities on board. Treat yourself to a moment of relaxation in the spa or stay in shape in the fitness centre. Depending on the season, let yourself be tempted by the swimming pool or a spot of sunbathing. This journey without a port of call will also be an opportunity to enjoy the conferences or shows proposed on board, depending on the activities offered, or to do some shopping in the boutique or to meet the PONANT photographers in their dedicated space. As for lovers of the open sea, they will be able to visit the ship's upper deck to admire the spectacle of the waves and perhaps be lucky enough to observe marine species. A truly enchanted interlude, combining comfort, rest and entertainment.

Day 3 MAUMERE, FLORES

Floresians have an ancient culture stretching back millennia before the first arrival of Europeans in search of trade opportunities. Their history is shared through oral traditions and is recreated in song and dance. The mountainous terrain of Flores has preserved the diversity of cultures and Maumere serves as the capital of the Sikka district and main trading port. Few tourists make it to Maumere with most stopping at Labuan Bajo and heading west to the islands of Komodo. Consequently, Maumere has kept its charming atmosphere, an eclectic mix of a bustling trading town and a coastal paradise. Join your expedition team and local guides for a tour by local transport to the markets and tribal villages in the hinterland of Maumere.

Day 4 KALABAHI, ALOR

The unique culture of the Alorrese continues among the Takpala indigenous group who have preserved their traditional architecture and ceremonies. The island of Alor is also known as the island of a Thousand Moko's. The Moko is a small bronze kettledrum which is believed to have originated from the Dong Son culture of Vietnam. However, it remains a mystery as to how these prehistoric Dong Son drums arrived in Alor. Local legend says that the Moko's were discovered buried in the ground, and indeed mokos are still being uncovered today. Join the expedition team and local guides for a tour by local transport to Takpala village, the Museum of a Thousand Mokos and the thriving main market of Kalabahi.

Day 5 AT SEA

Wild Earth Travel

Small Ships, Big Adventures

0800 945 3327 (within New Zealand) | +64 (0) 3 365 1355 | 1800 107 715 (within Australia)

info@wildearth-travel.com | wildearth-travel.com



Wild Earth Travel

Small Ships, Big Adventures

wildearth-travel.com

info@wildearth-travel.com

During your journey at sea, make the most of the many services and activities on board. Treat yourself to a moment of relaxation in the spa or stay in shape in the fitness centre. Depending on the season, let yourself be tempted by the swimming pool or a spot of sunbathing. This journey without a port of call will also be an opportunity to enjoy the conferences or shows proposed on board, depending on the activities offered, or to do some shopping in the boutique or to meet the PONANT photographers in their dedicated space. As for lovers of the open sea, they will be able to visit the ship's upper deck to admire the spectacle of the waves and perhaps be lucky enough to observe marine species. A truly enchanted interlude, combining comfort, rest and entertainment.

Day 6 BANDA NEIRA, MALUKU ISLANDS

From age-old traditional cultures and ancient vestiges, to coral reefs and lush green jungle... The attractions of the remote Banda archipelago seem endless. Better known as the legendary "Spice Islands" of the Ancient World, these small volcanic landmasses were the fabled prize of colonial powers for more than four centuries. Every colonial power of significance fought for control of these ten small islands that today have become largely forgotten. Walking the streets of Banda Neira is a surreal experience as your eyes are drawn to the eclectic mix of Portuguese, Dutch and British architecture, the remnants of a rich and tumultuous history. It is without doubt the most historically significant and interesting of all the "Spice Islands".

Day 7 KITIKITI WATERFALL, MOMMON

North of Triton Bay, in the Indonesian province of West Papua, lie the Bomberai Peninsula and Sebakor Bay. A real paradise for divers, this protected, authentic and very wild area boasts an exceptional biodiversity. Here, you will be able to admire the superb Kitikiti Waterfall where you could enjoy a swim or snorkel surrounded by lush nature, both on land and under water.

Day 8 TRITON BAY, WEST PAPUA

Triton Bay is one of three regions in Indonesia's West Papua province that comprise the Bird's Head Seascape (the other two are Raja Ampat and

Cenderawasih Bay), which is now considered by marine biologists to be the epicentre of the Coral Triangle. It contains more fish and coral species than anywhere else on the planet. Its unparalleled marine biodiversity and endemism, habitat richness, and relatively intact nature of its ecosystems are unique. Join your expedition team for a zodiac voyage through the spectacular rainforest capped karst islands. Later in the day enjoy the opportunity to explore the richness of the underwater realm.

Day 9 KEI ISLANDS, MALUKU ISLANDS

The Kei Islands are blessed with kilometres of stunning, yet almost entirely empty, white-sand beaches and a deeply hospitable population. Beneath the mostly Christian facade, Kei culture is fascinatingly distinctive. Local history holds that ancestors of contemporary Kei islanders came from Bali, part of the expanding Hindu Majapahit kingdom from the western archipelago. Enjoy a day of swimming and snorkelling on an idyllic uninhabited picture postcard tropical island.

Day 10 AT SEA

During your journey at sea, make the most of the many services and activities on board. Treat yourself to a moment of relaxation in the spa or stay in shape in the fitness centre. Depending on the season, let yourself be tempted by the swimming pool or a spot of sunbathing. This journey without a port of call will also be an opportunity to enjoy the conferences or shows proposed on board, depending on the activities offered, or to do some shopping in the boutique or to meet the PONANT photographers in their dedicated space. As for lovers of the open sea, they will be able to visit the ship's upper deck to admire the spectacle of the waves and perhaps be lucky enough to observe marine species. A truly enchanted interlude, combining comfort, rest and entertainment.

Day 11 BAUCAU

Located on the north coast of East Timor, not far from the Wetar Strait, the city of Baucau inspires wanderlust. The country's second-largest city, where the vestiges of a Portuguese colonial past spanning nearly four centuries can still be found, is a small corner of paradise known among diving enthusiasts. And with good reason: this earthly paradise, nestling between lush green hills and long white-sand beaches lining a turquoise sea, is particularly renowned for its

Wild Earth Travel

Small Ships, Big Adventures

0800 945 3327 (within New Zealand) | +64 (0) 3 365 1355 | **1800 107 715** (within Australia)

info@wildearth-travel.com | **wildearth-travel.com**



Wild Earth Travel

Small Ships, Big Adventures

wildearth-travel.com

info@wildearth-travel.com

Coral Triangle. The latter is home to multiple protected marine species, some fifteen endemic corals, and 76% of the world's coral reefs.

Day 12 DILI

Located on the northern coast of the island of Timor, along the narrow plains between the central mountains and the Ombai Strait, the seaside resort of Dili is the capital of East Timor, a former Portuguese colony that has been independent since May 2002. The uniqueness of this territory, still preserved from the tourist routes, is unveiled thanks to the beauty of its intact landscapes, with dense tropical forest covering undulating hills, coral reef and immaculate sandy beaches. You will be enchanted by this small and peaceful town with a distinctive Portuguese atmosphere, and will discover the riches of its historic and cultural heritage during your visit.

Day 13 AT SEA

During your journey at sea, make the most of the many services and activities on board. Treat yourself to a moment of relaxation in the spa or stay in shape in the fitness centre. Depending on the season, let yourself be tempted by the swimming pool or a spot of sunbathing. This journey without a port of call will also be an opportunity to enjoy the conferences or shows proposed on board, depending on the activities offered, or to do some shopping in the boutique or to meet the PONANT photographers in their dedicated space. As for lovers of the open sea, they will be able to visit the ship's upper deck to admire the spectacle of the waves and perhaps be lucky enough to observe marine species. A truly enchanted interlude, combining comfort, rest and entertainment.

Day 14 KOMODO NATIONAL PARK

Between the islands of Sumbawa and Flores, Komodo National Park welcomes you to discover its natural wonders. At the very heart of the Indonesian archipelago, the three islands that form it - Komodo, Rinca and Padar - owe their renown to the famous eponymous dragons, enormous lizards over two metres long, which live in its grassy savannah. This jagged and hilly volcanic territory belonging to the Sunda Islands is a UNESCO World Heritage Site because of its incredible terrestrial and marine biodiversity. Admire its palette of colours, intermingling the sparkling whites of the beaches, the deep blues of the coral-filled water and the soft greens of its pastures.

Day 15 BADAS, SUMBAWA

The port of Badas is part of the greater township of Sumbawa Besar, on the island of Sumbawa. Like most of Sumbawa the people hold their culture strong as a major part of their identity. The island has a strong influence from the Makassarese of Sulawesi, who over the centuries have introduced a lot of their culture into Sumbawa. Join your expedition team and local guides for a tour by bus to Pamulung Village where you will be welcomed by the head of the village and have the opportunity to witness first-hand the local traditions of rice pounding, weaving and also witness a wedding procession. Your visit will conclude with an exciting Sumbawa buffalo race, an event that will be held in honour of our visit.

Day 16 BENOA, BALI

If it's a taste of exotic authenticity you're after, prepare to be spell-bound by the island of Bali, tucked away in the heart of the Indonesian archipelago. The beauty and diversity of its landscapes, the depth and richness of its cultural heritage and the plethora of activities on offer here make Bali a little slice of heaven on Earth. The island's southern coast enthral with its white sand beaches, its picturesque little fishing villages such as Benoa, and its hills patchworked with terraced rice paddies further inland. Nicknamed 'the Island of Gods' for its sumptuous temples, Bali is the beating heart of Indonesian Hinduism.

Please Note:

Itineraries are subject to change.

Wild Earth Travel

Small Ships, Big Adventures

0800 945 3327 (within New Zealand) | +64 (0) 3 365 1355 | **1800 107 715** (within Australia)

info@wildearth-travel.com | **wildearth-travel.com**



Wild Earth Travel

Small Ships, Big Adventures

wildearth-travel.com

info@wildearth-travel.com

YOUR SHIP: LE JACQUES CARTIER

YOUR SHIP: Le Jacques Cartier

VESSEL TYPE: Luxury

LENGTH:

PASSENGER CAPACITY: 92 cabins

BUILT/REFURBISHED: 2018/2019

Featuring innovative and environmentally-friendly equipment, elegantly designed staterooms, spacious suites with large windows, and lounge areas that open onto the outside, this new limited-capacity yacht boasting just 92 staterooms and suites will offer you a truly unique cruising experience.

As the sixth ship in a new series that remains true to the Ponant spirit, Le Jacques Cartier will embody the unique atmosphere that is the cruise line's hallmark: a subtle blend of refinement, intimacy and comfort.

Aboard this ship that flies the French flag, you will experience the incomparable pleasure of an intimate cruise, with the possibility of exploring an ever-increasing range of destinations in an ethnic-chic ambiance with luxury service.

Experience a luxurious setting where the accent is on authenticity and passion for travel.

RESTAURANTS

As it is an essential part of French culture, gastronomy will naturally have pride of place aboard this new ship.

To the back of Deck 4, you will find a 260 m² panoramic restaurant which can accommodate all of our passengers in a single sitting. Designed differently to that on our other ships, this

dining area, which opens onto the outside, will have a buffet of salads, desserts and cheeses at your disposal. Our discreet and attentive crew will provide table service for hot meals.

In a relaxed atmosphere, an outdoor grill on Deck 3 will serve grilled meats with a variety of salads and desserts.

PUBLIC AREAS

Le Jacques Cartier has many common areas that are designed and equipped to meet all of your needs while preserving the intimacy of each passenger.

A 140 m² reception area includes:

A reception/concierge desk,

An excursions desk,

The ship's administrative services,

The sales office, manned by our Guest Relations Officer,

Our 50 m² boutique which sells clothing, jewellery, beauty products, postcards and various accessories,

Toilets accessible to passengers with reduced mobility.

A new hydraulic platform with adjustable height provides:

Easier boarding than on any other cruise ship,

Easier Zodiac embarkation and disembarkation for expeditions,

Easier access to the sea for swimming and practising various water sports such as kayaking or paddle-boarding.

A pool deck offering:

A pool with a panoramic view, equipped with a counter-current swimming system,

A pleasant solarium,

An outdoor bar and lounge with armchairs and sofas.

A 200 m² main lounge which can accommodate all of our passengers to share convivial moments and to host activities

Wild Earth Travel

Small Ships, Big Adventures

0800 945 3327 (within New Zealand) | +64 (0) 3 365 1355 | **1800 107 715** (within Australia)

info@wildearth-travel.com | wildearth-travel.com

Wild Earth Travel

Small Ships, Big Adventures

wildearth-travel.com

info@wildearth-travel.com

organised during the day or evening.

Lastly, a theatre that seats 188, equipped with:

The latest sound and lighting technology,

A LED wall as the stage backdrop, for the projection of high-resolution images and videos.



and videos.

Wild Earth Travel

Small Ships, Big Adventures

0800 945 3327 (within New Zealand) | +64 (0) 3 365 1355 | **1800 107 715** (within Australia)

info@wildearth-travel.com | **wildearth-travel.com**

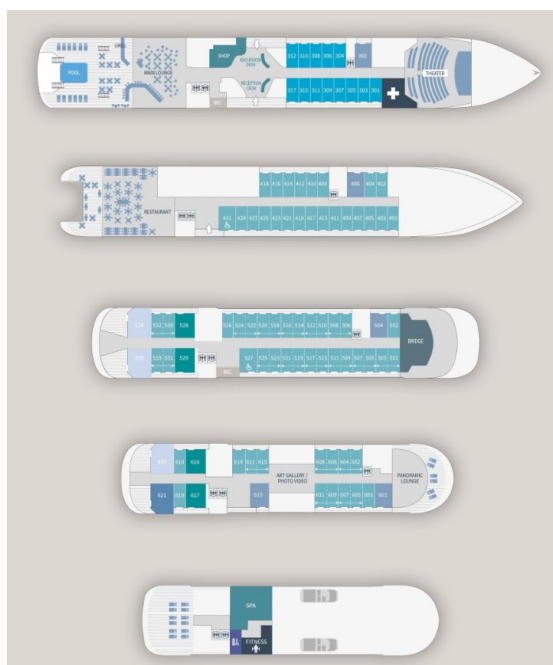
Wild Earth Travel

Small Ships, Big Adventures

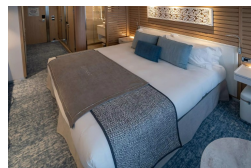
wildearth-travel.com

info@wildearth-travel.com

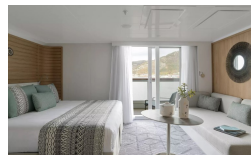
INSIDE YOUR SHIP



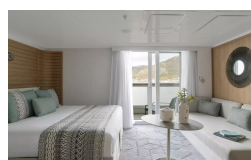
DELUXE STATEROOM



Deluxe Suite Deck 4



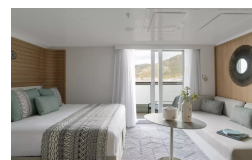
Deluxe Suite Deck 6



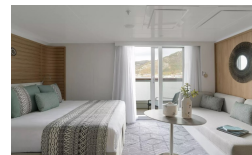
Grand Deluxe Suite Deck 6



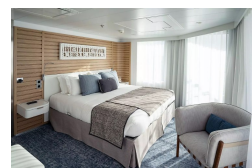
DELUXE SUITE



Deluxe Suite Deck 5



GRAND DELUXE SUITE



OWNER'S SUITE



Wild Earth Travel

Small Ships, Big Adventures

0800 945 3327 (within New Zealand) | +64 (0) 3 365 1355 | 1800 107 715 (within Australia)

info@wildearth-travel.com | wildearth-travel.com



Wild Earth Travel

Small Ships, Big Adventures

wildearth-travel.com

info@wildearth-travel.com

PRICING

23-Dec-2025 to 07-Jan-2026

DELUXE STATEROOM	21250 AUD pp
PRESTIGE STATEROOM DECK 4	23640 AUD pp
PRESTIGE STATEROOM DECK 5	24820 AUD pp
PRESTIGE STATEROOM DECK 6	26250 AUD pp
DELUXE SUITE	36680 AUD pp
Deluxe Suite Deck 5	36680 AUD pp
Deluxe Suite Deck 4	36680 AUD pp
Deluxe Suite Deck 6	36680 AUD pp
PRESTIGE SUITE DECK 5	49730 AUD pp
PRESTIGE SUITE DECK 6	52340 AUD pp
PRIVILEGE SUITE	54950 AUD pp
Privilege Suite Deck 6	54950 AUD pp
Grand Deluxe Suite Deck 6	60410 AUD pp
GRAND DELUXE SUITE	60410 AUD pp
OWNER'S SUITE	63480 AUD pp

ADDITIONAL CHARGES:

Port Taxes and Fees 1110 AUD pp

Wild Earth Travel
Small Ships, Big Adventures

0800 945 3327 (within New Zealand) | +64 (0) 3 365 1355 | **1800 107 715** (within Australia)

info@wildearth-travel.com | **wildearth-travel.com**



Wild Earth Travel

Small Ships, Big Adventures

wildearth-travel.com

info@wildearth-travel.com

SPECIAL OFFERS

Online prices reflect the current brochure fare savings of up to 30%. Prices may change based on demand. Terms and conditions apply. This special offer is subject to availability. Please contact us for more details.

Wild Earth Travel

Small Ships, Big Adventures

0800 945 3327 (within New Zealand) | +64 (0) 3 365 1355 | **1800 107 715** (within Australia)

info@wildearth-travel.com | **wildearth-travel.com**