

# Wild Earth Travel

*Small Ships, Big Adventures*

**wildearth-travel.com**

**info@wildearth-travel.com**

## LA DOLCE VITA - CRUISE FROM NAPLES TO VALLETTA, MALTA

Embark on your journey from charming Naples, the birthplace of pizza, and venture to the stylish island of Capri, adored by glamorous celebrities and global jet-setters. In Sicily, explore the captivating streets of Taormina, steeped in secrets and tales, as well as the bustling Corso Umberto, a cosmopolitan hub boasting the boutiques of renowned fashion designers. Ascend Mount Etna, an active volcano, visit the filming locations of "The Godfather" in Catania, then journey on to Malta. Discover UNESCO's cultural heritage sites, including the uniquely beautiful city of Valletta, and the ancient megalithic monuments of Gozo, dating back 5500 years.



### ITINERARY

#### Day 1 NAPLES, ITALY

Embarkation at the scenic port of Naples begins promptly at 14:00. After the essential safety drill join us for a delightful welcome cocktail and dinner. Spend the night in Naples, marking an enchanting start to your cruise adventure.

#### Day 2 CAPRI, ITALY

Our morning journey, set against the stunning backdrop of the Tyrrhenian Sea, brings us to the illustrious island of Capri. With its breathtaking vistas, azure skies, and perfect climate, Capri is truly the "jewel" of the Bay of Naples. Upon anchoring, join our optional half-day excursion on the island. In the late afternoon, we bid farewell to Capri and set sail for Lipari. Before dinner, participate in one of our most popular onboard events: the Cocktail Demonstration. Led by our skilled Bar Manager, this hour-long session features the creation of two signature cocktails, complete with recipes to recreate at home!

Wild Earth Travel

*Small Ships, Big Adventures*

**0800 945 3327** (within New Zealand) | +64 (0) 3 365 1355 | **1800 107 715** (within Australia)

info@wildearth-travel.com | **wildearth-travel.com**



# Wild Earth Travel

*Small Ships, Big Adventures*

**wildearth-travel.com**

**info@wildearth-travel.com**

## Day 3 LIPARI, ITALY

After a delightful breakfast, our ship anchors at Lipari, the largest gem of the Aeolian Islands. Known for its rich mythology and stunning landscapes, Lipari is irresistibly charming. Join our optional half-day Lipari tour, starting from the pier. A scenic coach ride takes us to Quattrocchi for panoramic views, then to Quattropiani with its picturesque church and views of Salina. We continue to a Spanish-built castle, now a cathedral and museum with artifacts from prehistoric and ancient Greek and Roman eras. After the tour, enjoy free time in the village for lunch on your own. The afternoon is yours for personal exploration and relaxation. Dinner awaits you back on board!

## Day 4 TAORMINA, SICILY

In the morning, we arrive at the captivating shores of Taormina. Join our optional tour to explore its charming narrow alleyways, fifteenth-century Palazzo Corvaja, and the remarkable Greek amphitheater with its exceptional acoustics. Enjoy a leisurely stroll along Corso Umberto, a bustling pedestrian street with upscale boutiques, often called the "Sicilian Saint Tropez." Lunch is at your leisure, allowing time for personal exploration and culinary delights. At 7:30 PM, join our included Wine Tasting Experience, featuring a selection of Italian and Greek wines, before our four-course dinner on board. Return to the ship for dinner as we anchor for the night, surrounded by Taormina's enchanting beauty.

## Day 5 CATANIA, ITALY

We depart from enchanting Taormina early in the morning, heading to Catania. After a hearty breakfast, join our optional full-day excursion to Mount Etna. Explore diverse landscapes, from bustling towns to citrus orchards, vineyards, and ancient lava fields. Learn about the region's volcanic history and folklore while visiting picturesque villages. Ascend to 2000 meters to stroll around the Silvestri craters or enjoy local delicacies like honey. The tour concludes at a renowned winery on Mount Etna's slopes, where you'll sample exquisite wines and savor Sicily's rich flavors.

## Day 6 SYRACUSE, ITALY

Upon our early morning arrival in Syracuse, explore the enchanting "White City" after a satisfying breakfast. Opt for our guided tour to delve deeper into Syracuse's rich history and cultural treasures. Lunch is at your discretion, allowing you to savor local flavors at your own pace. The afternoon is yours to enjoy, whether wandering charming streets, relaxing seaside, or delving into Syracuse's captivating past. Before dinner, our chef will share the recipe for Pesto alla Trapanese, a perfect addition to your home gatherings. Tonight, enjoy our Captain's Italian Night Dinner with delicious dishes and music. Around midnight, we bid farewell to Syracuse and sail for the enchanting shores of Gozo Island.

## Day 6 GOZO ISLAND - VALETTA

Morning brings our enchanting arrival at Gozo Island, beloved for its awe-inspiring Ggantija temples, a UNESCO World Heritage Site dating back 5500 years. Enjoy a revitalizing swim in Malta's serene waters before reaching Gozo at noon. Here, explore the island's treasures and arrange a leisurely lunch. For airport or hotel transfers, our Cruise Manager is available to assist; please provide your preferred transfer time at least 24 hours in advance. In the afternoon, we bid farewell to Gozo and head for Valetta, Malta's majestic capital. Indulge in a delectable dinner served onboard as we glide through tranquil waters.

## Day 8 VALLETTA, MALTA

We arrive in Valetta early in the morning. Enjoy a leisurely breakfast with fellow travelers. Your Cruise Manager will be available to assist with your pre-booked transfers.

### Please note:

Itineraries are subject to change.

Wild Earth Travel

*Small Ships, Big Adventures*

**0800 945 3327** (within New Zealand) | +64 (0) 3 365 1355 | **1800 107 715** (within Australia)

info@wildearth-travel.com | **wildearth-travel.com**



# Wild Earth Travel

*Small Ships, Big Adventures*

**wildearth-travel.com**

**info@wildearth-travel.com**

## YOUR SHIP: VARIETY VOYAGER

<b>YOUR SHIP:</b>	<b>Variety Voyager</b>
<b>VESSEL TYPE:</b>	<b>Motor Yacht</b>
<b>LENGTH:</b>	<b>68 metres</b>
<b>PASSENGER CAPACITY:</b>	<b>72</b>
<b>BUILT/REFURBISHED:</b>	<b>2012</b>

The new build 68m - 223ft state of the art Mega Yacht will accommodate just 72 passengers in 36 cabins. Built under the latest International "Safety of Life At Sea" (SOLAS 2010) regulations and classified by the American Bureau of Shipping (A.B.S.), the Variety Voyager guarantees guests safety with incomparable comfort and elegance.

The Variety Voyager will seduce her passengers with her sleek lines and ample deck space, very much what one expects from a millionaire's super yacht. Inside, cabins and public areas are finished with warm fabrics, rich marbles, axminster carpeting and soft tones wood panelling. Everywhere, unobstructed views of the ocean and of the ports visited. And above all, the professional service of a crew of 28, always with a smile and a true desire to satisfy.

Ship Categories & locations may vary on some trips, please check for details.



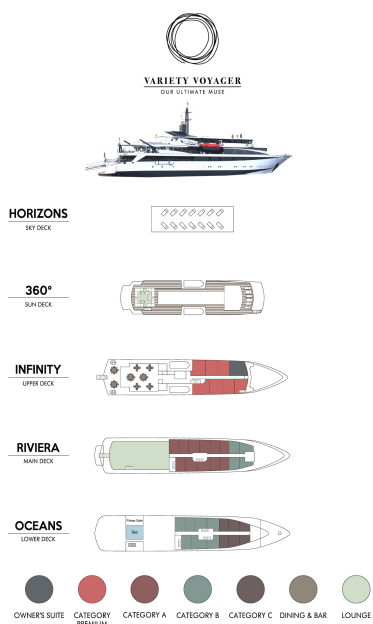
Wild Earth Travel

*Small Ships, Big Adventures*

**0800 945 3327** (within New Zealand) | +64 (0) 3 365 1355 | **1800 107 715** (within Australia)

info@wildearth-travel.com | **wildearth-travel.com**

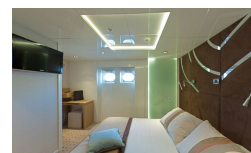
## INSIDE YOUR SHIP



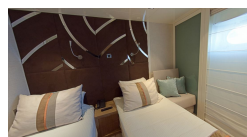
Category A



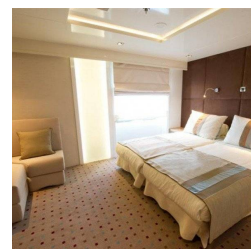
Category B



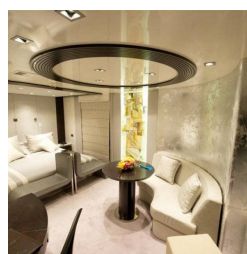
Category C



Category P



Owner's Suite





# Wild Earth Travel

*Small Ships, Big Adventures*

[wildearth-travel.com](http://wildearth-travel.com)

[info@wildearth-travel.com](mailto:info@wildearth-travel.com)

## PRICING

### 24-May-2025 to 31-May-2025

Category C	3350 EUR pp
Category B	3950 EUR pp
Category A	4700 EUR pp
Category P	5550 EUR pp
Owner's Suite	6550 EUR pp

### 14-Jun-2025 to 21-Jun-2025

Category C	3350 EUR pp
Category B	3950 EUR pp
Category A	4700 EUR pp
Category P	5550 EUR pp
Owner's Suite	6550 EUR pp

### 28-Jun-2025 to 05-Jul-2025

Category C	3350 EUR pp
Category B	3950 EUR pp
Category A	4700 EUR pp
Category P	5550 EUR pp
Owner's Suite	6550 EUR pp

### 19-Jul-2025 to 26-Jul-2025

Category C	3350 EUR pp
Category B	3950 EUR pp
Category A	4700 EUR pp
Category P	5550 EUR pp
Owner's Suite	6550 EUR pp

### 04-Jul-2026 to 11-Jul-2026

Category C	3500 EUR pp
Category B	4100 EUR pp
Category A	4850 EUR pp
Category P	5750 EUR pp
Owner's Suite	6750 EUR pp

### 18-Jul-2026 to 25-Jul-2026

Category C	3500 EUR pp
Category B	4100 EUR pp
Category A	4850 EUR pp
Category P	5750 EUR pp
Owner's Suite	6750 EUR pp

### 08-Aug-2026 to 15-Aug-2026

Category C	3500 EUR pp
Category B	4100 EUR pp
Category A	4850 EUR pp
Category P	5750 EUR pp
Owner's Suite	6750 EUR pp

### ADDITIONAL CHARGES:

Port Taxes 490 EUR pp



# Wild Earth Travel

*Small Ships, Big Adventures*

**wildearth-travel.com**

**info@wildearth-travel.com**

**20% OFF**

20% EBD or NO SINGLE SUPPLEMENT until 15 July 2025 on 2026 sailings. Terms and conditions apply. This special offer is subject to availability. Please contact us for more details.

**Wild Earth Travel**

*Small Ships, Big Adventures*

**0800 945 3327** (within New Zealand) | +64 (0) 3 365 1355 | **1800 107 715** (within Australia)

info@wildearth-travel.com | **wildearth-travel.com**