



Wild Earth Travel

Small Ships, Big Adventures

wildearth-travel.com

info@wildearth-travel.com

LANDSCAPES AND ISLANDS OF THE NORTH ATLANTIC - IRELAND, FRANCE & UK IN LUXURY

PONANT invites you to discover the Atlantic coastline with a brand-new 9-day cruise. During this exceptional journey aboard Le Lyrial, let the wild and melancholic beauty of the French, British and Irish coasts surprise you.

Throughout your journey, you will benefit from an excursion included per person per port of call, to choose from a selection offered by PONANT. On this cruise, explore the Ria d'Etel, near Quiberon, discover the Mont-Saint-Michel from Saint-Malo, or visit Cork and the famous Old Jameson distillery from Kinsale. The diversity of experiences on offer promises you intense and varied moments.

Departing from Bordeaux, the wine capital of the world, you will head for the coast of Brittany and call at Quiberon, the port of embarkation for the aptly-named Belle-Île-en-Mer. You will then reach the tip of the Finistere and the ship will enter the magnificent Brest harbour, where you may catch a glimpse of La Recouvrance, the stunning schooner that is both the ambassador of the city and its symbol.

After calling at Guernsey, whose green meadows and romantic cliffs once welcomed the exiled Victor Hugo, you will sail to Saint-Malo. In this town famous for the legendary Route du Rhum yacht race, lose yourself in the diversity of its heritage, stroll along its rampart walks, and fall under the charm of the city of privateers.

Le Lyrial will cross the English Channel to reach Dartmouth, a

charming town tucked away in the heart of the stunning setting formed by the mouth of the Dart. You will discover its old pastel-coloured fishermen's houses and some half-timbered buildings.

Your ship will then sail towards the Isles of Scilly, a strange little archipelago whose landscapes seem to have come straight out of Enid Blyton's famous story, The Rockingdown Mystery. Here, long sandy beaches lie alongside green fields, while ruins of old castles stand proud on hilltops.

You will leave England for Ireland where you will discover Kinsale, a charming little port sheltered within the Bandon Estuary.

Your cruise will end in Dublin, the Irish capital brimming with convivial atmosphere and authentic charm.

Wild Earth Travel

Small Ships, Big Adventures

0800 945 3327 (within New Zealand) | +64 (0) 3 365 1355 | **1800 107 715** (within Australia)

info@wildearth-travel.com | **wildearth-travel.com**

Wild Earth Travel

Small Ships, Big Adventures



wildearth-travel.com

info@wildearth-travel.com



Welcome to the Quiberon peninsula in the Morbihan, Brittany's wild and contrasting landscape. On the Atlantic Ocean side, you will see stretches of wild coastline with rugged, windswept cliffs, and on the Quiberon Bay side, long sandy beaches overlooking emerald waters. Port Haliguen, a ten-minute walk from Quiberon, is a marina that has retained all its charms of yesteryear.

Day 3 BREST

Built around a magnificent harbour, Brest opens onto the Iroise Sea and the river Penfeld that runs through the city. Its port was used by the French navy for centuries before becoming an important commercial port and marina appreciated by the great navigators. As you stroll along Quai Commandant Malbert, you may catch a glimpse of the superb schooner La Recouvrance and, in the distance, a few lighthouses along the chiselled coastline. You will be able to discover the marine ecosystems at the Oceanopolis centre and visit the naval museum housed in Chateau de Brest. Officially recognised as a city of art and history, Brest will also charm you with its architectural eclecticism, mingling modernism, neoclassicism, art nouveau and art deco.

Day 4 GUERNSEY, CHANNEL ISLANDS

Guernsey is an atypical and unforgettable port of call. This Channel Island will delight you with its mild, idiosyncratic climate and its green and floral landscapes. Don't be surprised to come across dolmens and menhirs here and there, testifying to the long history of the island and its rich heritage. The attractive capital of St. Peter Port is characteristic of the delightful British atmosphere that gives the island its charm. The memory of the great writer Victor Hugo is also very present, as he lived for fifteen years in exile in Guernsey. His home, Hauteville House, preserves his memory. The incredible richness of the decoration gives a clear illustration of the creative genius of this great man.

Day 5 SAINT-MALO

ntic charm.

ITINERARY

Day 1 BORDEAUX

Bordeaux stretches along the banks of the Garonne river, in South-West France. Its rich wine tradition makes it the world capital of wine. Let yourself be carried away by the history of the Port de la Lune, made a UNESCO World Heritage site for its prestigious classical architecture. On the famous Place de la Bourse, the past and the present unite: here you can observe the majestic old buildings reflected in the contemporary Miroir d'eau creation.

Day 2 QUIBERON

Wild Earth Travel

Small Ships, Big Adventures

0800 945 3327 (within New Zealand) | +64 (0) 3 365 1355 | 1800 107 715 (within Australia)

info@wildearth-travel.com | wildearth-travel.com

Wild Earth Travel

Small Ships, Big Adventures



wildearth-travel.com

info@wildearth-travel.com

The mere mention of Saint-Malo's name is enough to plunge us back into the richness of its past. The fortifications stand as testimony to the Malouins' determination to defend their citadel, fought over by France and Britain in turn. When we drop anchor here, immerse yourself in the diversity of its heritage: the time when privateers sailed the oceans in search of trade and victories; the legendary yacht races the port city is still famous for, such as the Route du Rhum; and the final resting place of the French writer François-René de Chateaubriand, who was born here and chose to be buried here anonymously.

Day 6 DARTMOUTH

Succumb to the charming setting of the small town of Dartmouth in the county of Devon, South-East England. Set in the heart of lush scenery, on the banks of the River Dart's estuary, the town's magnificent landscapes are typical of English countryside. Its picturesque paved streets will let you discover sumptuous half-timbered houses dating back to the 15th and 16th centuries while, on the northern bank of the river, you will be able to admire former fishermen's houses in their pastel colours. Now a popular tourist destination, this small port town has nonetheless managed to retain its relaxing and romantic atmosphere.

Day 7 ISLES OF SCILLY

Nestling in the clear waters of the Atlantic Ocean, at the south west tip of Cornwall, the Isles of Scilly form a small British island chain whose climate, landscapes and lifestyle are unlike any other and seem to have come straight from an Enid Blyton story. Here, everything resembles a tropical paradise. The long sandy beaches run alongside lush green meadows teeming with semi-exotic flowers, whilst the ruins of ancient castles loom from the tops of the hills. Veritable havens of peace that inspired the legendary Avalon of King Arthur, they are today listed as an Area of Outstanding Natural Beauty and the rugged coastline plays host to wildlife that is as varied as it is exceptional, including the very rare Atlantic grey seal.

Day 8 KINSALE

Considered Ireland's most beautiful village, Kinsale will captivate you with its sublime natural landscapes and rich cultural heritage. Located at the mouth of the Bandon River in County Cork, this charming little port is home to picturesque streets lined with colourful houses, art galleries and theatres, as well as to a 17th-century fort. Not far away, perched on a rocky promontory, stands the Old Head of Kinsale Lighthouse: still in operation today, it has magnificent views over the Atlantic Ocean.

Day 9 DUBLIN

The Irish capital stretches along the banks of the Liffey to Dublin bay, on the East coast of Ireland. Discover Ireland's warm conviviality in the pedestrian district of Temple Bar. Its cobbled streets are brimming with fabulous shops, pubs and arts centres. Next to Trinity College, famous for its 18th century library, you can stroll along Grafton Street: in one of its famous tea shops, try a delicious scone and clotted cream served hot and melt-in-the-mouth with jam. Not far from here, the majestic O'Connell bridge leads you to the avenue with the same name, on which Spire, a luminous contemporary sculpture presides.

Please note:

Itineraries are subject to change.

Wild Earth Travel

Small Ships, Big Adventures

0800 945 3327 (within New Zealand) | +64 (0) 3 365 1355 | **1800 107 715** (within Australia)

info@wildearth-travel.com | **wildearth-travel.com**

Wild Earth Travel

Small Ships, Big Adventures



wildearth-travel.com

info@wildearth-travel.com

YOUR SHIP: LE BELLOT

YOUR SHIP:	Le Bellot
VESSEL TYPE:	Luxury Expedition / Cruise Ship
LENGTH:	131 metres
PASSENGER CAPACITY:	184
BUILT/REFURBISHED:	2019-2020

Featuring innovative and environmentally-friendly equipment, elegantly designed staterooms, spacious suites with large windows, and lounge areas that open onto the outside, this new limited-capacity yacht boasting just 92 staterooms and suites will offer you a truly unique cruising experience.

As the first ship in a new series that remains true to the Ponant spirit, Le Bellot will embody the unique atmosphere that is the cruise line's hallmark: a subtle blend of refinement, intimacy and comfort.

Aboard this ship that flies the French flag, you will experience the incomparable pleasure of an intimate cruise, with the possibility of exploring an ever-increasing range of destinations in an ethnic-chic ambiance with luxury service.

Experience a luxurious setting where the accent is on authenticity and passion for travel.

RESTAURANTS

As it is an essential part of French culture, gastronomy will naturally have pride of place aboard this new ship.

To the back of Deck 4, you will find a 260 m² panoramic restaurant which can accommodate all of our passengers in a single sitting. Designed differently to that on our other ships, this

dining area, which opens onto the outside, will have a buffet of salads, desserts and cheeses at your disposal. Our discreet and attentive crew will provide table service for hot meals.

In a relaxed atmosphere, an outdoor grill on Deck 3 will serve grilled meats with a variety of salads and desserts.

PUBLIC AREAS

Le Bellot has many common areas that are designed and equipped to meet all of your needs while preserving the intimacy of each passenger.

A 140 m² reception area includes:

A reception/concierge desk,

An excursions desk,

The ship's administrative services,

The sales office, manned by our Guest Relations Officer,

Our 50 m² boutique which sells clothing, jewellery, beauty products, postcards and various accessories,

Toilets accessible to passengers with reduced mobility.

A new hydraulic platform with adjustable height provides:

Easier boarding than on any other cruise ship,

Easier Zodiac embarkation and disembarkation for expeditions,

Easier access to the sea for swimming and practising various water sports such as kayaking or paddle-boarding.

A pool deck offering:

A pool with a panoramic view, equipped with a counter-current swimming system,

A pleasant solarium,

An outdoor bar and lounge with armchairs and sofas.

A 200 m² main lounge which can accommodate all of our passengers to share convivial moments and to host activities

Wild Earth Travel

Small Ships, Big Adventures

0800 945 3327 (within New Zealand) | +64 (0) 3 365 1355 | **1800 107 715** (within Australia)

info@wildearth-travel.com | **wildearth-travel.com**

Wild Earth Travel

Small Ships, Big Adventures



wildearth-travel.com

info@wildearth-travel.com

organised during the day or evening.

Lastly, a theatre that seats 188, equipped with:

The latest sound and lighting technology,

A LED wall as the stage backdrop, for the projection of high-resolution images and videos.



and videos.

Wild Earth Travel

Small Ships, Big Adventures

0800 945 3327 (within New Zealand) | +64 (0) 3 365 1355 | **1800 107 715** (within Australia)

info@wildearth-travel.com | **wildearth-travel.com**

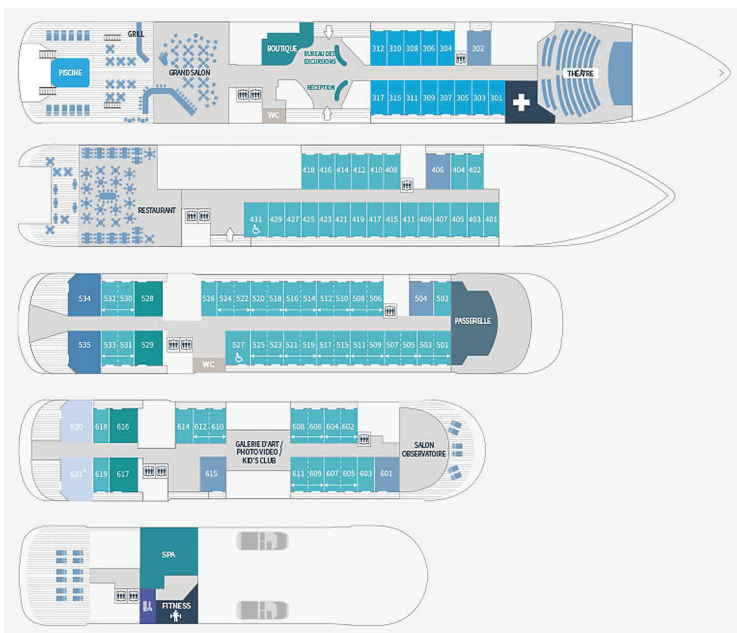
Wild Earth Travel

Small Ships, Big Adventures

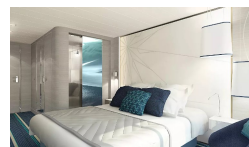
wildearth-travel.com

info@wildearth-travel.com

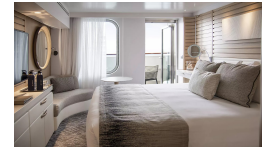
INSIDE YOUR SHIP



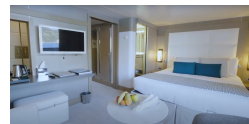
DeLuxe Stateroom



DeLuxe Stateroom



DeLuxe Suite



DeLuxe Suite Deck 3



DeLuxe Suite Deck 4



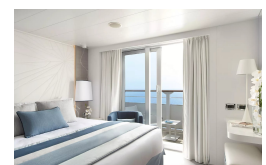
DeLuxe Suite Deck 5



DeLuxe Suite Deck 6



Grand Deluxe Suite



Wild Earth Travel
Small Ships, Big Adventures

0800 945 3327 (within New Zealand) | +64 (0) 3 365 1355 | 1800 107 715 (within Australia)

info@wildearth-travel.com | wildearth-travel.com

Wild Earth Travel

Small Ships, Big Adventures

wildearth-travel.com

info@wildearth-travel.com

PRICING

08-May-2025 to 16-May-2025

Superior Stateroom	8460 AUD pp
DeLuxe Stateroom	9130 AUD pp
Prestige Stateroom - Deck 4	9630 AUD pp
Prestige Stateroom - Deck 5	9920 AUD pp
Prestige Stateroom - Deck 6	10300 AUD pp
Deluxe Suite	13890 AUD pp
Prestige Suite - Deck 5	14940 AUD pp
Privilege Suite	15420 AUD pp
Grand Deluxe Suite	16210 AUD pp
Grand Privilege Suite	18240 AUD pp
Owner's suite	20270 AUD pp

29-Apr-2026 to 07-May-2026

Deluxe Stateroom	7140 AUD pp
Prestige Deck 4	7510 AUD pp
Prestige Deck 5	7740 AUD pp
Prestige Deck 6	8030 AUD pp
Deluxe Suite Deck 6	10770 AUD pp
Deluxe Suite Deck 5	10770 AUD pp
Deluxe Suite Deck 3	10770 AUD pp
Deluxe Suite Deck 4	10770 AUD pp
Prestige Deck 5 Suite	11590 AUD pp
Prestige Deck 6 Suite	11950 AUD pp
Privilege Suite Deck 6	12250 AUD pp
Privilege Suite Deck 5	12250 AUD pp
Grand Deluxe Suite Deck 6	12620 AUD pp
Grand Deluxe Suite Deck 5	12620 AUD pp

ADDITIONAL CHARGES:

Port Taxes 590 AUD pp

Wild Earth Travel

Small Ships, Big Adventures

0800 945 3327 (within New Zealand) | +64 (0) 3 365 1355 | **1800 107 715** (within Australia)

info@wildearth-travel.com | wildearth-travel.com



Wild Earth Travel

Small Ships, Big Adventures



wildearth-travel.com

info@wildearth-travel.com

SPECIAL OFFERS

Online prices reflect the current brochure fare savings of up to 30%. Prices may change based on demand. Terms and conditions apply. This special offer is subject to availability. Please contact us for more details.



Wild Earth Travel

Small Ships, Big Adventures

0800 945 3327 (within New Zealand) | +64 (0) 3 365 1355 | **1800 107 715** (within Australia)

info@wildearth-travel.com | **wildearth-travel.com**