

# Wild Earth Travel

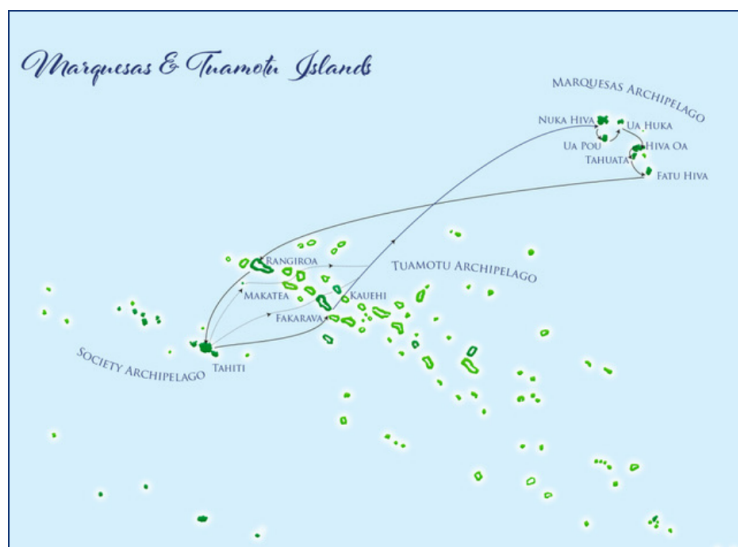
*Small Ships, Big Adventures*

**wildearth-travel.com**

**info@wildearth-travel.com**

## MARQUESAS ISLANDS, TUAMOTU AND SOCIETY ISLANDS CRUISE

Mythical and mystical. A land that has attracted explorers, writers, painters and artists. Breathtaking landscapes of mountains, valleys, plateaus and cliffs. A nation of former warriors, with their own language and culture. For more than 30 years, Aranui, as the main carrier of goods to the Marquesas, has maintained a vital link with its inhabitants and the outside world.



### ITINERARY

#### Day 1 – Departure from Papeete (Tahiti)

Check in between 7am to 9am. All passengers must be on board before 9am for a departure from Papeete at 12noon. Receive a warm welcome onboard from our crew and sail to Fakarava atoll in the Tuamotu archipelago.

#### Day 2 – Fakarava

Classified as a Biosphere Reserve by UNESCO for the preservation of rare species, Fakarava is the second largest atoll in French Polynesia.

The Aranui will disembark at the "Rotoava" pier. Passengers will have time to discover its small village, the church built out of coral, the local handicraft with a demonstration of the many uses of the coconut. Enjoy a day of relaxation, sun and beach, swimming or snorkeling among multicolored tropical fish.

Wild Earth Travel

*Small Ships, Big Adventures*

**0800 945 3327** (within New Zealand) | +64 (0) 3 365 1355 | **1800 107 715** (within Australia)

info@wildearth-travel.com | **wildearth-travel.com**

# Wild Earth Travel

*Small Ships, Big Adventures*



**wildearth-travel.com**

**info@wildearth-travel.com**

Possibility of scuba diving for certified divers only. Optional activities: bike rentals, E-Bike, Quad, certified diving (sign-up at the reception).

12:00 pm Lunch on board and departure for the Marquesas Islands

## Day 3 – At sea

A day to relax on the Pool Deck or in the comfort of our air-conditioned Lounge. Or why not simply enjoy the views of the South Pacific Ocean as we sail to the fascinating Marquesas Islands. Lectures on the culture and history of the Marquesas Islands will take you back in time and give you a complete overview of this ancient civilization. During the cruise, you will also have the opportunity to learn how to move your hips like a true Tahitian! You'll likely spend many evenings socializing at the bar with your fellow adventurers from around the world. The spirited Polynesian crew will proudly introduce you to their way of life and entertain you with Polynesian songs and rhythms on their ukuleles, guitars and drums. Before you go to bed, set your watch 30 minutes ahead as we switch to Marquesas time.

## Day 4 – Nuku Hiva (Taiohae/Hatiheu/Taipivai)

While the Aranui is unloading, you can explore Taiohae, the small administrative capital of the Marquesas. Taiohae Cove is the place where writer Herman Melville, then a 23-year-old sailor, and a friend jumped off a whaler in 1842. After breakfast, the passengers will disembark to pick up the waiting 4WDs for the day's excursion. Our first stop will be a visit to Taiohae Cathedral. You can visit the cathedral or go to the market to buy handicrafts. Then we will visit the archaeological site of "Tohua Kamuihei" with its giant banyans and petroglyphs. Your first introduction to traditional Marquesan cuisine will be served for lunch. The specialty here is the "umu", an underground oven where food is cooked for hours. Local music during the meal will provide a great atmosphere. In the small village of Hatiheu, you can visit a museum that displays copies of petroglyphs from unexplored valleys. Your tour will continue south to Taiohae with its spectacular bay, a giant volcanic amphitheater dominated by towering cliffs dotted with waterfalls.

Return to the village of Taiohae, where you will also find banks and stores. You can return to the ship from the village on foot or by car.

## Day 5 – Ua Pou (Hakahau)

From the decks, you'll see the unique mountain spires of Ua Pou. As the crew unloads supplies, cement, sugar, and loads bags of copra (dried coconuts) and fruit, explore the picturesque village of Hakahau and its church with a hand-carved wooden platform. Meet the island's talented carvers and artists, climb to the Cross for a breathtaking view of the mountains, lush valleys and main village. Another delicious Marquesan lunch will be served: breadfruit, a Marquesan staple with curried goat (a specialty of the Marquesas Islands), raw fish marinated in lemon juice and coconut milk, taro and red bananas. Enjoy an excellent dance performance, including the traditional UA POU "bird dance".

## Day 6 – Ua Huka (Vaip'e/Hane/Hokatu)

This island, which saw the construction of the first airstrip in the Marquesas in 1972, is largely arid and home to many wild horses, goats and pigs. In the early morning, the Aranui will perform an impressive maneuver, a 180 degree turn in the magnificent "Invisible Bay" of Vaipae. A maneuver that requires all the dexterity of the captain and crew is not to be missed. On the dry land of Ua Huka, visit the small museum with exquisite replicas of Marquesan art where our guides will immerse you in this ancient civilization. Continue in your 4x4 to explore the island, stopping for breathtaking views, visit the arboretum born of the passion of the island's former mayor, before reaching the beautiful village of Hane. Lunch will be served at a local family restaurant. Discover some of the island's specialties, handicrafts, wood carvings, and engraved coconut shells. After lunch, return to the boat by 4x4. For the more spirited, a 2 mile walk back from the tree house awaits you. Be sure to be on deck as the Aranui will sail all along the coast of Ua Huka for more great views.

## Day 7 – Tahuata (Vaitahu) – Hiva Oa (Atuona)

The Aranui will anchor in the small bay of Tahuata. The only access is by sea, as there is no airport on Tahuata. On this leaf-shaped island, the air is thick with the scent of Tahitian tiare, frangipani and history. In 1595, Spanish explorers landed in the village of Vaitahu and opened fire on a crowd of curious islanders, killing about 200 people. Tahuata is also the site of the first French colony in the Marquesas in 1842. The large church built by the Vatican, is decorated with beautiful Marquesan sculptures and stained-glass windows representing the Virgin Mary. Tahuata is famous for its exquisite bone and helmet shell carvings. There will be much to choose from in the village.

Wild Earth Travel

*Small Ships, Big Adventures*

**0800 945 3327** (within New Zealand) | +64 (0) 3 365 1355 | **1800 107 715** (within Australia)

info@wildearth-travel.com | wildearth-travel.com



# Wild Earth Travel

*Small Ships, Big Adventures*

**wildearth-travel.com**

**info@wildearth-travel.com**

The Aranui will arrive in Hiva Oa after lunch on board, where you will have plenty of time to explore Atuona, the second largest village in the Marquesas. This is where Paul Gauguin lived and created some of his works. You can also visit the colonial store where he bought his bread, as well as a replica of his infamous "house of pleasure" and the museum. By 4X4, you will visit the largest archaeological site in the Marquesas Islands, "Tohua Taa'oa". Walking up the hill to the cemetery, you will have a breathtaking view of the motu Hanakee. Under a huge frangipani tree is a tombstone with the simple words: Paul Gauguin 1903. Nearby is the grave of another famous European who also fell in love with Hiva Oa: the Belgian singer-songwriter Jacques Brel, who died in 1978.

## Day 8 – Fatu Hiva (Omoa – Hanavave)

Fatu Hiva, the most lush and remote of the Marquesas Islands, is also a Marquesan craft center. In the village of Omoa, the women will demonstrate how to make tapa by crushing the bark from mulberry, banyan or breadfruit trees, as well as how to make a floral bouquet, "Umuhei", a mixture made from the island's plants used to perfume their hair. After visiting the village, the more athletic passengers can opt for a 10-mile hike that will take them from Omoa to Hanavave, offering breathtaking views of the high cliffs. A picnic lunch will be served at the mountain top. Non-hikers will sail aboard the Aranui from Omoa to Hanavave to the Bay of Virgins, considered one of the most beautiful bays in the world. Meet in the village for a demonstration of the making of coconut oil, "pani" and the scented towel, "aeu pipi". During our departure, partake in the farewell ceremony on deck 7.

## Day 9 – At sea

A day to recover from the emotions experienced in the Marquesas archipelago. During our crossing to the magnificent Tuamotu Islands, conferences and activities will be offered throughout the day. Before going to bed, set your watch back 30 minutes, back to Tahiti time.

## Day 10 – Rangiroa or Makatea (V11, V12, V22)

### RANGIROA

From the open decks, watch our approach and arrival into the largest atoll in

French Polynesia and the second largest in the world. We enter Tiputa Pass, one of Rangiroa's passes. Glass bottom boat and scuba diving excursions are available (sign-up at the reception). Scuba diving here is rated as one of the best in the world (certified divers only). If you decide not to visit, enjoy Rangiroa's white sand beach and translucent lagoon. The "mamas" stands will have an excellent display of shell necklaces, chains and key chains and other small souvenirs for sale on the beach. The Aranui will depart at lunchtime and sail to the magical island of Bora Bora.

### MAKATEA - (V12, V13, V14, V23)

Surrounded by sheer cliffs rising nearly 240 feet above sea level, Makatea is the only atoll in the Tuamotu Islands with potable water, which comes from its underground caves. Once a prosperous atoll due to phosphate mining from 1917 until 1964, it has become almost completely deserted, with only a few families left. Today, the inhabitants live from copra cultivation, fishing and the trade of coconut crab, the "Kaveu". The Aranui offers the opportunity to visit the remains of Makatea's past and the phosphate exploitation.

Passengers will disembark by tender at the Temao pier and begin the journey across the atoll on foot or by car. Visit the sacred caves of Makatea and picnic under the cliffs or on the beach.

## Day 11 – Bora Bora

Upon arriving in Bora Bora's world-famous lagoon of opalescent blues and greens, you will be greeted by the majestic "Mount Otemanu", the highest peak on the island. In this perfect island paradise, you can enjoy a day at the beach and a barbecue on a private Motu surrounded by crystal clear waters, the "Motu Tapu". You can also choose from a variety of optional excursions at an additional cost: scuba diving, lagoon tours by boat and motorized canoe, swimming with sharks and rays! Bora Bora was an American military outpost during World War II and remnants of the war such as cannons and bunkers can be seen on a 4X4 tour. Departure in the evening for Papeete.

## Day 12 – Return to Tahiti (Papeete)

This is the end of our journey. It's time to say N n ! (Goodbye) to your travel companions, to the Polynesian staff and Aranui guides.

**Please Note:**

Wild Earth Travel

*Small Ships, Big Adventures*

**0800 945 3327** (within New Zealand) | +64 (0) 3 365 1355 | **1800 107 715** (within Australia)

info@wildearth-travel.com | wildearth-travel.com



# Wild Earth Travel

*Small Ships, Big Adventures*



**wildearth-travel.com**

**info@wildearth-travel.com**

Itineraries are subject to change.

**Wild Earth Travel**  
*Small Ships, Big Adventures*

**0800 945 3327** (within New Zealand) | +64 (0) 3 365 1355 | **1800 107 715** (within Australia)

info@wildearth-travel.com | **wildearth-travel.com**

# Wild Earth Travel

*Small Ships, Big Adventures*



**wildearth-travel.com**

**info@wildearth-travel.com**

## YOUR SHIP: ARANUI 5

<b>YOUR SHIP:</b>	<b>Aranui 5</b>
<b>VESSEL TYPE:</b>	<b>Passenger ship</b>
<b>LENGTH:</b>	<b>126 m</b>
<b>PASSENGER CAPACITY:</b>	<b>260</b>
<b>BUILT/REFURBISHED:</b>	

Speed: 15 knots

The Aranui is a mixed passenger/cargo vessel that operates between Tahiti and the Marquesas.

It offers comfortable, air-conditioned accommodations for about two hundred passengers. Passengers will be able to sunbathe on deck, swim in the pool, or enjoy exotic tropical drinks while the Aranui wends her way among the islands of the Marquesas. Accommodations classes are Suites, Deluxe, Standard and C Class.

The vessel operates under the French flag, and her crew are all Polynesian, primarily Marquesans.

The name "Aranui" means "The Great Highway" in Maori, another great Polynesian culture. The first Aranui was purchased from a New Zealand ship owner in 1959. CPTM kept her original name, because it suited her. Serving as a link between the remote Marquesas and the rest of the world, she truly was a "Great Highway" on which cargo and passengers traveled. The original Aranui was too small to meet the needs of the islands as trade increased. CPTM therefore retired her, and purchased a new vessel, which was also named the Aranui.

The second Aranui was originally built as a freighter for the

Baltic trades, with unusually thick hull plates because of floating ice often found in that area. She was modified in Germany in 1990. After only a few years in service, it too was getting too small again to meet the islands growing trade needs as well as the increase in passenger travel. CPTM decided this time to built a new vessel in 2000, which was named the Aranui III.

The Aranui III was built in Romania as a freighter and passenger vessel. Because of the number of passengers the vessel can carry, she was reclassified as a passenger vessel. Thus, meeting the strict requirements of international SOLAS (Safety of Life at Sea) regulations and many safety features including life boats and life rafts and fire safety systems.

The vessel is French registry, and crewed primarily by Marquesans. They are extremely skillfull and very hospitable. It is often their custom to give an impromptu concert in the evenings, both for their own and our passengers pleasure.

The ship features a small boutique where various sundries, clothing and souvenirs are available. There are washing machines and dryers aboard, but dry cleaning is not available. There is also 2 bars and video room, which has a television, VCR and a small collection of videotapes. She also has a swimming pool and sunbathing space.

The electrical current in the cabins is 220 volt 50 cycle AC, using French-style plugs. If you have any small appliances, please make sure you have voltage converters and plug adapters needed to use the ship's standard power. The vessel accepts traveler's checks and credit cards for on-board purchases. We regret that we cannot honor personal checks. Lock boxes are available on board for passenger convenience.



# Wild Earth Travel

*Small Ships, Big Adventures*



**wildearth-travel.com**

**info@wildearth-travel.com**

However, we do not accept custody or responsibility for passenger valuables or money.

Facilities:

- 1 dining room
- 2 spacious lounges & 2 conference rooms
- 4 bars including 1 panoramic bar (Skybar)
- 1 fitness room
- 1 outside swimming pool
- 1 shop
- 1 massage room
- 2 lifts



r/> 2 lifts

Wild Earth Travel

*Small Ships, Big Adventures*

**0800 945 3327** (within New Zealand) | +64 (0) 3 365 1355 | **1800 107 715** (within Australia)

info@wildearth-travel.com | **wildearth-travel.com**

## INSIDE YOUR SHIP



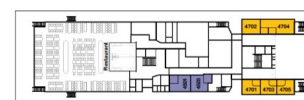
MAIN DECK-3



LOWER DECK-2



BOAT DECK-5



UPPER DECK-4



POOL DECK-7



VERANDA DECK-6

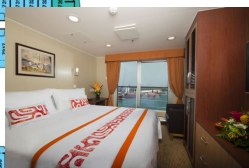


SKY DECK-9



SUN DECK-8

### DELUXE



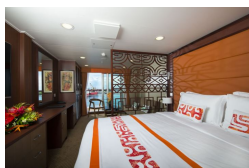
### DOUBLE STATEROOM



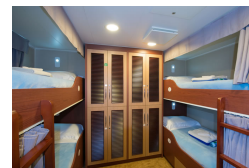
### JUNIOR SUITE WITH BALCONY



### PREMIUM SUITE



### DORMITORY - CLASS C - 4 BEDS



### DOUBLE STATEROOM WITH OBSTRUCTED VIEW



### JUNIOR SUITE WITHOUT BALCONY



### PRESIDENTIAL SUITE





# Wild Earth Travel

*Small Ships, Big Adventures*

[wildearth-travel.com](http://wildearth-travel.com)

[info@wildearth-travel.com](mailto:info@wildearth-travel.com)

## PRICING

### 03-May-2025 to 14-May-2025

DORMITORY - CLASS C - 4 BEDS	5596 NZD pp
DOUBLE STATEROOM WITH OBSTRUCTED VIEW	8587 NZD pp
DOUBLE STATEROOM	9005 NZD pp
DELUXE	11064 NZD pp
JUNIOR SUITE WITHOUT BALCONY	12131 NZD pp
SINGLE STATEROOM	12355 NZD pp
PREMIUM SUITE	12842 NZD pp
ROYAL SUITE WITH OBSTRUCTED VIEW	12948 NZD pp
ROYAL SUITE	13506 NZD pp
PRESIDENTIAL SUITE	17033 NZD pp

### 17-May-2025 to 28-May-2025

DORMITORY - CLASS C - 4 BEDS	5596 NZD pp
DOUBLE STATEROOM WITH OBSTRUCTED VIEW	8587 NZD pp
DOUBLE STATEROOM	9005 NZD pp
DELUXE	11064 NZD pp
JUNIOR SUITE WITHOUT BALCONY	12131 NZD pp
SINGLE STATEROOM	12355 NZD pp
PREMIUM SUITE	12842 NZD pp
ROYAL SUITE WITH OBSTRUCTED VIEW	12948 NZD pp
ROYAL SUITE	13506 NZD pp
PRESIDENTIAL SUITE	17033 NZD pp

### 31-May-2025 to 11-Jun-2025

DORMITORY - CLASS C - 4 BEDS	5596 NZD pp
DOUBLE STATEROOM WITH OBSTRUCTED VIEW	8587 NZD pp
DOUBLE STATEROOM	9005 NZD pp
DELUXE	11064 NZD pp
JUNIOR SUITE WITHOUT BALCONY	12131 NZD pp
SINGLE STATEROOM	12355 NZD pp
PREMIUM SUITE	12842 NZD pp
ROYAL SUITE WITH OBSTRUCTED VIEW	12948 NZD pp
ROYAL SUITE	13506 NZD pp
PRESIDENTIAL SUITE	17033 NZD pp



# Wild Earth Travel

*Small Ships, Big Adventures*

**wildearth-travel.com**

**info@wildearth-travel.com**

## PRICING

### 14-Jun-2025 to 25-Jun-2025

DORMITORY - CLASS C - 4 BEDS	5596 NZD pp
DOUBLE STATEROOM WITH OBSTRUCTED VIEW	8587 NZD pp
DOUBLE STATEROOM	9005 NZD pp
DELUXE	11064 NZD pp
JUNIOR SUITE WITHOUT BALCONY	12131 NZD pp
SINGLE STATEROOM	12355 NZD pp
PREMIUM SUITE	12842 NZD pp
ROYAL SUITE WITH OBSTRUCTED VIEW	12948 NZD pp
ROYAL SUITE	13506 NZD pp
PRESIDENTIAL SUITE	17033 NZD pp

### 28-Jun-2025 to 09-Jul-2025

DORMITORY - CLASS C - 4 BEDS	5596 NZD pp
DOUBLE STATEROOM WITH OBSTRUCTED VIEW	8587 NZD pp
DOUBLE STATEROOM	9005 NZD pp
DELUXE	11064 NZD pp
JUNIOR SUITE WITHOUT BALCONY	12131 NZD pp
SINGLE STATEROOM	12355 NZD pp
PREMIUM SUITE	12842 NZD pp
ROYAL SUITE WITH OBSTRUCTED VIEW	12948 NZD pp
ROYAL SUITE	13506 NZD pp
PRESIDENTIAL SUITE	17033 NZD pp

### 12-Jul-2025 to 23-Jul-2025

DORMITORY - CLASS C - 4 BEDS	5596 NZD pp
DOUBLE STATEROOM WITH OBSTRUCTED VIEW	8587 NZD pp
DOUBLE STATEROOM	9005 NZD pp
DELUXE	11064 NZD pp
JUNIOR SUITE WITHOUT BALCONY	12131 NZD pp
SINGLE STATEROOM	12355 NZD pp
PREMIUM SUITE	12842 NZD pp
ROYAL SUITE WITH OBSTRUCTED VIEW	12948 NZD pp
ROYAL SUITE	13506 NZD pp
PRESIDENTIAL SUITE	17033 NZD pp

# Wild Earth Travel

*Small Ships, Big Adventures*

**wildearth-travel.com**

**info@wildearth-travel.com**

## PRICING

### 26-Jul-2025 to 06-Aug-2025

<b>DORMITORY - CLASS C - 4 BEDS</b>	<b>5596 NZD pp</b>
<b>DOUBLE STATEROOM WITH OBSTRUCTED VIEW</b>	<b>8587 NZD pp</b>
<b>DOUBLE STATEROOM</b>	<b>9005 NZD pp</b>
<b>DELUXE</b>	<b>11064 NZD pp</b>
<b>JUNIOR SUITE WITHOUT BALCONY</b>	<b>12131 NZD pp</b>
<b>SINGLE STATEROOM</b>	<b>12355 NZD pp</b>
<b>PREMIUM SUITE</b>	<b>12842 NZD pp</b>
<b>ROYAL SUITE WITH OBSTRUCTED VIEW</b>	<b>12948 NZD pp</b>
<b>ROYAL SUITE</b>	<b>13506 NZD pp</b>
<b>PRESIDENTIAL SUITE</b>	<b>17033 NZD pp</b>

### 09-Aug-2025 to 20-Aug-2025

<b>DORMITORY - CLASS C - 4 BEDS</b>	<b>5596 NZD pp</b>
<b>DOUBLE STATEROOM WITH OBSTRUCTED VIEW</b>	<b>8587 NZD pp</b>
<b>DOUBLE STATEROOM</b>	<b>9005 NZD pp</b>
<b>DELUXE</b>	<b>11064 NZD pp</b>
<b>JUNIOR SUITE WITHOUT BALCONY</b>	<b>12131 NZD pp</b>
<b>SINGLE STATEROOM</b>	<b>12355 NZD pp</b>
<b>PREMIUM SUITE</b>	<b>12842 NZD pp</b>
<b>ROYAL SUITE WITH OBSTRUCTED VIEW</b>	<b>12948 NZD pp</b>
<b>ROYAL SUITE</b>	<b>13506 NZD pp</b>
<b>PRESIDENTIAL SUITE</b>	<b>17033 NZD pp</b>

### 23-Aug-2025 to 03-Sep-2025

<b>DORMITORY - CLASS C - 4 BEDS</b>	<b>5596 NZD pp</b>
<b>DOUBLE STATEROOM WITH OBSTRUCTED VIEW</b>	<b>8587 NZD pp</b>
<b>DOUBLE STATEROOM</b>	<b>9005 NZD pp</b>
<b>DELUXE</b>	<b>11064 NZD pp</b>
<b>JUNIOR SUITE WITHOUT BALCONY</b>	<b>12131 NZD pp</b>
<b>SINGLE STATEROOM</b>	<b>12355 NZD pp</b>
<b>PREMIUM SUITE</b>	<b>12842 NZD pp</b>
<b>ROYAL SUITE WITH OBSTRUCTED VIEW</b>	<b>12948 NZD pp</b>
<b>ROYAL SUITE</b>	<b>13506 NZD pp</b>
<b>PRESIDENTIAL SUITE</b>	<b>17033 NZD pp</b>



# Wild Earth Travel

*Small Ships, Big Adventures*

**wildearth-travel.com**

**info@wildearth-travel.com**

## PRICING

### 20-Sep-2025 to 01-Oct-2025

DORMITORY - CLASS C - 4 BEDS	5596 NZD pp
DOUBLE STATEROOM WITH OBSTRUCTED VIEW	8587 NZD pp
DOUBLE STATEROOM	9005 NZD pp
DELUXE	11064 NZD pp
JUNIOR SUITE WITHOUT BALCONY	12131 NZD pp
SINGLE STATEROOM	12355 NZD pp
PREMIUM SUITE	12842 NZD pp
ROYAL SUITE WITH OBSTRUCTED VIEW	12948 NZD pp
ROYAL SUITE	13506 NZD pp
PRESIDENTIAL SUITE	17033 NZD pp

### 04-Oct-2025 to 15-Oct-2025

DORMITORY - CLASS C - 4 BEDS	5596 NZD pp
DOUBLE STATEROOM WITH OBSTRUCTED VIEW	8587 NZD pp
DOUBLE STATEROOM	9005 NZD pp
DELUXE	11064 NZD pp
JUNIOR SUITE WITHOUT BALCONY	12131 NZD pp
SINGLE STATEROOM	12355 NZD pp
PREMIUM SUITE	12842 NZD pp
ROYAL SUITE WITH OBSTRUCTED VIEW	12948 NZD pp
ROYAL SUITE	13506 NZD pp
PRESIDENTIAL SUITE	17033 NZD pp

### 18-Oct-2025 to 29-Oct-2025

DORMITORY - CLASS C - 4 BEDS	5596 NZD pp
DOUBLE STATEROOM WITH OBSTRUCTED VIEW	8587 NZD pp
DOUBLE STATEROOM	9005 NZD pp
DELUXE	11064 NZD pp
JUNIOR SUITE WITHOUT BALCONY	12131 NZD pp
SINGLE STATEROOM	12355 NZD pp
PREMIUM SUITE	12842 NZD pp
ROYAL SUITE WITH OBSTRUCTED VIEW	12948 NZD pp
ROYAL SUITE	13506 NZD pp
PRESIDENTIAL SUITE	17033 NZD pp

# Wild Earth Travel

*Small Ships, Big Adventures*

**wildearth-travel.com**

**info@wildearth-travel.com**

## PRICING

**15-Nov-2025 to 26-Nov-2025**

<b>DORMITORY - CLASS C - 4 BEDS</b>	<b>5596 NZD pp</b>
<b>DOUBLE STATEROOM WITH OBSTRUCTED VIEW</b>	<b>8587 NZD pp</b>
<b>DOUBLE STATEROOM</b>	<b>9005 NZD pp</b>
<b>DELUXE</b>	<b>11064 NZD pp</b>
<b>JUNIOR SUITE WITHOUT BALCONY</b>	<b>12131 NZD pp</b>
<b>SINGLE STATEROOM</b>	<b>12355 NZD pp</b>
<b>PREMIUM SUITE</b>	<b>12842 NZD pp</b>
<b>ROYAL SUITE WITH OBSTRUCTED VIEW</b>	<b>12948 NZD pp</b>
<b>ROYAL SUITE</b>	<b>13506 NZD pp</b>
<b>PRESIDENTIAL SUITE</b>	<b>17033 NZD pp</b>

**29-Nov-2025 to 10-Dec-2025**

<b>DORMITORY - CLASS C - 4 BEDS</b>	<b>5596 NZD pp</b>
<b>DOUBLE STATEROOM WITH OBSTRUCTED VIEW</b>	<b>8587 NZD pp</b>
<b>DOUBLE STATEROOM</b>	<b>9005 NZD pp</b>
<b>DELUXE</b>	<b>11064 NZD pp</b>
<b>JUNIOR SUITE WITHOUT BALCONY</b>	<b>12131 NZD pp</b>
<b>JUNIOR SUITE WITH BALCONY</b>	<b>12131 NZD pp</b>
<b>SINGLE STATEROOM</b>	<b>12355 NZD pp</b>
<b>PREMIUM SUITE</b>	<b>12842 NZD pp</b>
<b>ROYAL SUITE WITH OBSTRUCTED VIEW</b>	<b>12948 NZD pp</b>
<b>ROYAL SUITE</b>	<b>13506 NZD pp</b>
<b>PRESIDENTIAL SUITE</b>	<b>17033 NZD pp</b>

**17-Jan-2026 to 28-Jan-2026**

**Wild Earth Travel**

*Small Ships, Big Adventures*

**0800 945 3327** (within New Zealand) | +64 (0) 3 365 1355 | **1800 107 715** (within Australia)

info@wildearth-travel.com | wildearth-travel.com



# Wild Earth Travel

*Small Ships, Big Adventures*



**wildearth-travel.com**

**info@wildearth-travel.com**

<b>DORMITORY - CLASS C - 4 BEDS</b>	<b>5596 NZD pp</b>
<b>DOUBLE STATEROOM WITH OBSTRUCTED VIEW</b>	<b>8587 NZD pp</b>
<b>DOUBLE STATEROOM</b>	<b>9005 NZD pp</b>
<b>DELUXE</b>	<b>11064 NZD pp</b>
<b>JUNIOR SUITE WITHOUT BALCONY</b>	<b>12131 NZD pp</b>
<b>SINGLE STATEROOM</b>	<b>12355 NZD pp</b>
<b>PREMIUM SUITE</b>	<b>12842 NZD pp</b>
<b>ROYAL SUITE WITH OBSTRUCTED VIEW</b>	<b>12948 NZD pp</b>
<b>ROYAL SUITE</b>	<b>13506 NZD pp</b>
<b>PRESIDENTIAL SUITE</b>	<b>17033 NZD pp</b>

Wild Earth Travel

*Small Ships, Big Adventures*

**0800 945 3327** (within New Zealand) | +64 (0) 3 365 1355 | **1800 107 715** (within Australia)

info@wildearth-travel.com | **wildearth-travel.com**

# Wild Earth Travel

*Small Ships, Big Adventures*

[wildearth-travel.com](http://wildearth-travel.com)

[info@wildearth-travel.com](mailto:info@wildearth-travel.com)

## PRICING

### 31-Jan-2026 to 11-Feb-2026

DORMITORY - CLASS C - 4 BEDS	5596 NZD pp
DOUBLE STATEROOM WITH OBSTRUCTED VIEW	8587 NZD pp
DOUBLE STATEROOM	9005 NZD pp
DELUXE	11064 NZD pp
JUNIOR SUITE WITHOUT BALCONY	12131 NZD pp
SINGLE STATEROOM	12355 NZD pp
PREMIUM SUITE	12842 NZD pp
ROYAL SUITE WITH OBSTRUCTED VIEW	12948 NZD pp
ROYAL SUITE	13506 NZD pp
PRESIDENTIAL SUITE	17033 NZD pp

### 28-Feb-2026 to 11-Mar-2026

DORMITORY - CLASS C - 4 BEDS	5596 NZD pp
DOUBLE STATEROOM WITH OBSTRUCTED VIEW	8587 NZD pp
DOUBLE STATEROOM	9005 NZD pp
DELUXE	11064 NZD pp
JUNIOR SUITE WITHOUT BALCONY	12131 NZD pp
SINGLE STATEROOM	12355 NZD pp
PREMIUM SUITE	12842 NZD pp
ROYAL SUITE WITH OBSTRUCTED VIEW	12948 NZD pp
ROYAL SUITE	13506 NZD pp
PRESIDENTIAL SUITE	17033 NZD pp

### 14-Mar-2026 to 25-Mar-2026

DORMITORY - CLASS C - 4 BEDS	5596 NZD pp
DOUBLE STATEROOM WITH OBSTRUCTED VIEW	8587 NZD pp
DOUBLE STATEROOM	9005 NZD pp
DELUXE	11064 NZD pp
JUNIOR SUITE WITHOUT BALCONY	12131 NZD pp
SINGLE STATEROOM	12355 NZD pp
PREMIUM SUITE	12842 NZD pp
ROYAL SUITE WITH OBSTRUCTED VIEW	12948 NZD pp
ROYAL SUITE	13506 NZD pp
PRESIDENTIAL SUITE	17033 NZD pp



# Wild Earth Travel

*Small Ships, Big Adventures*

**wildearth-travel.com**

**info@wildearth-travel.com**

## PRICING

### 11-Apr-2026 to 22-Apr-2026

<b>DORMITORY - CLASS C - 4 BEDS</b>	<b>5596 NZD pp</b>
<b>DOUBLE STATEROOM WITH OBSTRUCTED VIEW</b>	<b>8587 NZD pp</b>
<b>DOUBLE STATEROOM</b>	<b>9005 NZD pp</b>
<b>DELUXE</b>	<b>11064 NZD pp</b>
<b>JUNIOR SUITE WITHOUT BALCONY</b>	<b>12131 NZD pp</b>
<b>SINGLE STATEROOM</b>	<b>12355 NZD pp</b>
<b>PREMIUM SUITE</b>	<b>12842 NZD pp</b>
<b>ROYAL SUITE WITH OBSTRUCTED VIEW</b>	<b>12948 NZD pp</b>
<b>ROYAL SUITE</b>	<b>13506 NZD pp</b>
<b>PRESIDENTIAL SUITE</b>	<b>17033 NZD pp</b>

### 25-Apr-2026 to 06-May-2026

<b>DORMITORY - CLASS C - 4 BEDS</b>	<b>5596 NZD pp</b>
<b>DOUBLE STATEROOM WITH OBSTRUCTED VIEW</b>	<b>8587 NZD pp</b>
<b>DOUBLE STATEROOM</b>	<b>9005 NZD pp</b>
<b>DELUXE</b>	<b>11064 NZD pp</b>
<b>JUNIOR SUITE WITHOUT BALCONY</b>	<b>12131 NZD pp</b>
<b>SINGLE STATEROOM</b>	<b>12355 NZD pp</b>
<b>PREMIUM SUITE</b>	<b>12842 NZD pp</b>
<b>ROYAL SUITE WITH OBSTRUCTED VIEW</b>	<b>12948 NZD pp</b>
<b>ROYAL SUITE</b>	<b>13506 NZD pp</b>
<b>PRESIDENTIAL SUITE</b>	<b>17033 NZD pp</b>

### 09-May-2026 to 20-May-2026

<b>DORMITORY - CLASS C - 4 BEDS</b>	<b>5596 NZD pp</b>
<b>DOUBLE STATEROOM WITH OBSTRUCTED VIEW</b>	<b>8587 NZD pp</b>
<b>DOUBLE STATEROOM</b>	<b>9005 NZD pp</b>
<b>DELUXE</b>	<b>11064 NZD pp</b>
<b>JUNIOR SUITE WITHOUT BALCONY</b>	<b>12131 NZD pp</b>
<b>SINGLE STATEROOM</b>	<b>12355 NZD pp</b>
<b>PREMIUM SUITE</b>	<b>12842 NZD pp</b>
<b>ROYAL SUITE WITH OBSTRUCTED VIEW</b>	<b>12948 NZD pp</b>
<b>ROYAL SUITE</b>	<b>13506 NZD pp</b>
<b>PRESIDENTIAL SUITE</b>	<b>17033 NZD pp</b>

# Wild Earth Travel

*Small Ships, Big Adventures*

**wildearth-travel.com**

**info@wildearth-travel.com**

## PRICING

### 30-May-2026 to 10-Jun-2026

<b>DORMITORY - CLASS C - 4 BEDS</b>	<b>5596 NZD pp</b>
<b>DOUBLE STATEROOM WITH OBSTRUCTED VIEW</b>	<b>8587 NZD pp</b>
<b>DOUBLE STATEROOM</b>	<b>9005 NZD pp</b>
<b>DELUXE</b>	<b>11064 NZD pp</b>
<b>JUNIOR SUITE WITHOUT BALCONY</b>	<b>12131 NZD pp</b>
<b>SINGLE STATEROOM</b>	<b>12355 NZD pp</b>
<b>PREMIUM SUITE</b>	<b>12842 NZD pp</b>
<b>ROYAL SUITE WITH OBSTRUCTED VIEW</b>	<b>12948 NZD pp</b>
<b>ROYAL SUITE</b>	<b>13506 NZD pp</b>
<b>PRESIDENTIAL SUITE</b>	<b>17033 NZD pp</b>

### 13-Jun-2026 to 24-Jun-2026

<b>DORMITORY - CLASS C - 4 BEDS</b>	<b>5596 NZD pp</b>
<b>DOUBLE STATEROOM WITH OBSTRUCTED VIEW</b>	<b>8587 NZD pp</b>
<b>DOUBLE STATEROOM</b>	<b>9005 NZD pp</b>
<b>DELUXE</b>	<b>11064 NZD pp</b>
<b>JUNIOR SUITE WITHOUT BALCONY</b>	<b>12131 NZD pp</b>
<b>SINGLE STATEROOM</b>	<b>12355 NZD pp</b>
<b>PREMIUM SUITE</b>	<b>12842 NZD pp</b>
<b>ROYAL SUITE WITH OBSTRUCTED VIEW</b>	<b>12948 NZD pp</b>
<b>ROYAL SUITE</b>	<b>13506 NZD pp</b>
<b>PRESIDENTIAL SUITE</b>	<b>17033 NZD pp</b>

### 04-Jul-2026 to 15-Jul-2026

<b>DORMITORY - CLASS C - 4 BEDS</b>	<b>5596 NZD pp</b>
<b>DOUBLE STATEROOM WITH OBSTRUCTED VIEW</b>	<b>8587 NZD pp</b>
<b>DOUBLE STATEROOM</b>	<b>9005 NZD pp</b>
<b>DELUXE</b>	<b>11064 NZD pp</b>
<b>JUNIOR SUITE WITHOUT BALCONY</b>	<b>12131 NZD pp</b>
<b>SINGLE STATEROOM</b>	<b>12355 NZD pp</b>
<b>PREMIUM SUITE</b>	<b>12842 NZD pp</b>
<b>ROYAL SUITE WITH OBSTRUCTED VIEW</b>	<b>12948 NZD pp</b>
<b>ROYAL SUITE</b>	<b>13506 NZD pp</b>
<b>PRESIDENTIAL SUITE</b>	<b>17033 NZD pp</b>

**Wild Earth Travel**  
*Small Ships, Big Adventures*

**0800 945 3327** (within New Zealand) | +64 (0) 3 365 1355 | **1800 107 715** (within Australia)

info@wildearth-travel.com | wildearth-travel.com



# Wild Earth Travel

*Small Ships, Big Adventures*

**wildearth-travel.com**

**info@wildearth-travel.com**

## PRICING

### 18-Jul-2026 to 29-Jul-2026

DORMITORY - CLASS C - 4 BEDS	5596 NZD pp
DOUBLE STATEROOM WITH OBSTRUCTED VIEW	8587 NZD pp
DOUBLE STATEROOM	9005 NZD pp
DELUXE	11064 NZD pp
JUNIOR SUITE WITHOUT BALCONY	12131 NZD pp
SINGLE STATEROOM	12355 NZD pp
PREMIUM SUITE	12842 NZD pp
ROYAL SUITE WITH OBSTRUCTED VIEW	12948 NZD pp
ROYAL SUITE	13506 NZD pp
PRESIDENTIAL SUITE	17033 NZD pp

### 01-Aug-2026 to 12-Aug-2026

DORMITORY - CLASS C - 4 BEDS	5596 NZD pp
DOUBLE STATEROOM WITH OBSTRUCTED VIEW	8587 NZD pp
DOUBLE STATEROOM	9005 NZD pp
DELUXE	11064 NZD pp
JUNIOR SUITE WITHOUT BALCONY	12131 NZD pp
SINGLE STATEROOM	12355 NZD pp
PREMIUM SUITE	12842 NZD pp
ROYAL SUITE WITH OBSTRUCTED VIEW	12948 NZD pp
ROYAL SUITE	13506 NZD pp
PRESIDENTIAL SUITE	17033 NZD pp

### 15-Aug-2026 to 26-Aug-2026

DORMITORY - CLASS C - 4 BEDS	5596 NZD pp
DOUBLE STATEROOM WITH OBSTRUCTED VIEW	8587 NZD pp
DOUBLE STATEROOM	9005 NZD pp
DELUXE	11064 NZD pp
JUNIOR SUITE WITHOUT BALCONY	12131 NZD pp
SINGLE STATEROOM	12355 NZD pp
PREMIUM SUITE	12842 NZD pp
ROYAL SUITE WITH OBSTRUCTED VIEW	12948 NZD pp
ROYAL SUITE	13506 NZD pp
PRESIDENTIAL SUITE	17033 NZD pp

Wild Earth Travel  
*Small Ships, Big Adventures*

**0800 945 3327** (within New Zealand) | +64 (0) 3 365 1355 | **1800 107 715** (within Australia)

info@wildearth-travel.com | wildearth-travel.com

# Wild Earth Travel

*Small Ships, Big Adventures*

**wildearth-travel.com**

**info@wildearth-travel.com**

## PRICING

### 29-Aug-2026 to 09-Sep-2026

<b>DORMITORY - CLASS C - 4 BEDS</b>	<b>5596 NZD pp</b>
<b>DOUBLE STATEROOM WITH OBSTRUCTED VIEW</b>	<b>8587 NZD pp</b>
<b>DOUBLE STATEROOM</b>	<b>9005 NZD pp</b>
<b>DELUXE</b>	<b>11064 NZD pp</b>
<b>JUNIOR SUITE WITHOUT BALCONY</b>	<b>12131 NZD pp</b>
<b>SINGLE STATEROOM</b>	<b>12355 NZD pp</b>
<b>PREMIUM SUITE</b>	<b>12842 NZD pp</b>
<b>ROYAL SUITE WITH OBSTRUCTED VIEW</b>	<b>12948 NZD pp</b>
<b>ROYAL SUITE</b>	<b>13506 NZD pp</b>
<b>PRESIDENTIAL SUITE</b>	<b>17033 NZD pp</b>

### 26-Sep-2026 to 07-Oct-2026

<b>DORMITORY - CLASS C - 4 BEDS</b>	<b>5596 NZD pp</b>
<b>DOUBLE STATEROOM WITH OBSTRUCTED VIEW</b>	<b>8587 NZD pp</b>
<b>DOUBLE STATEROOM</b>	<b>9005 NZD pp</b>
<b>DELUXE</b>	<b>11064 NZD pp</b>
<b>JUNIOR SUITE WITHOUT BALCONY</b>	<b>12131 NZD pp</b>
<b>SINGLE STATEROOM</b>	<b>12355 NZD pp</b>
<b>PREMIUM SUITE</b>	<b>12842 NZD pp</b>
<b>ROYAL SUITE WITH OBSTRUCTED VIEW</b>	<b>12948 NZD pp</b>
<b>ROYAL SUITE</b>	<b>13506 NZD pp</b>
<b>PRESIDENTIAL SUITE</b>	<b>17033 NZD pp</b>

### 10-Oct-2026 to 21-Oct-2026

<b>DORMITORY - CLASS C - 4 BEDS</b>	<b>5596 NZD pp</b>
<b>DOUBLE STATEROOM WITH OBSTRUCTED VIEW</b>	<b>8587 NZD pp</b>
<b>DOUBLE STATEROOM</b>	<b>9005 NZD pp</b>
<b>DELUXE</b>	<b>11064 NZD pp</b>
<b>JUNIOR SUITE WITHOUT BALCONY</b>	<b>12131 NZD pp</b>
<b>SINGLE STATEROOM</b>	<b>12355 NZD pp</b>
<b>PREMIUM SUITE</b>	<b>12842 NZD pp</b>
<b>ROYAL SUITE WITH OBSTRUCTED VIEW</b>	<b>12948 NZD pp</b>
<b>ROYAL SUITE</b>	<b>13506 NZD pp</b>
<b>PRESIDENTIAL SUITE</b>	<b>17033 NZD pp</b>

# Wild Earth Travel

*Small Ships, Big Adventures*

**wildearth-travel.com**

**info@wildearth-travel.com**

## PRICING

### 07-Nov-2026 to 18-Nov-2026

<b>DORMITORY - CLASS C - 4 BEDS</b>	<b>5596 NZD pp</b>
<b>DOUBLE STATEROOM WITH OBSTRUCTED VIEW</b>	<b>8587 NZD pp</b>
<b>DOUBLE STATEROOM</b>	<b>9005 NZD pp</b>
<b>DELUXE</b>	<b>11064 NZD pp</b>
<b>JUNIOR SUITE WITHOUT BALCONY</b>	<b>12131 NZD pp</b>
<b>SINGLE STATEROOM</b>	<b>12355 NZD pp</b>
<b>PREMIUM SUITE</b>	<b>12842 NZD pp</b>
<b>ROYAL SUITE WITH OBSTRUCTED VIEW</b>	<b>12948 NZD pp</b>
<b>ROYAL SUITE</b>	<b>13506 NZD pp</b>
<b>PRESIDENTIAL SUITE</b>	<b>17033 NZD pp</b>

### 21-Nov-2026 to 02-Dec-2026

<b>DORMITORY - CLASS C - 4 BEDS</b>	<b>5596 NZD pp</b>
<b>DOUBLE STATEROOM WITH OBSTRUCTED VIEW</b>	<b>8587 NZD pp</b>
<b>DOUBLE STATEROOM</b>	<b>9005 NZD pp</b>
<b>DELUXE</b>	<b>11064 NZD pp</b>
<b>JUNIOR SUITE WITHOUT BALCONY</b>	<b>12131 NZD pp</b>
<b>SINGLE STATEROOM</b>	<b>12355 NZD pp</b>
<b>PREMIUM SUITE</b>	<b>12842 NZD pp</b>
<b>ROYAL SUITE WITH OBSTRUCTED VIEW</b>	<b>12948 NZD pp</b>
<b>ROYAL SUITE</b>	<b>13506 NZD pp</b>
<b>PRESIDENTIAL SUITE</b>	<b>17033 NZD pp</b>

### 05-Dec-2026 to 16-Dec-2026

<b>DORMITORY - CLASS C - 4 BEDS</b>	<b>5596 NZD pp</b>
<b>DOUBLE STATEROOM WITH OBSTRUCTED VIEW</b>	<b>8587 NZD pp</b>
<b>DOUBLE STATEROOM</b>	<b>9005 NZD pp</b>
<b>DELUXE</b>	<b>11064 NZD pp</b>
<b>JUNIOR SUITE WITHOUT BALCONY</b>	<b>12131 NZD pp</b>
<b>SINGLE STATEROOM</b>	<b>12355 NZD pp</b>
<b>PREMIUM SUITE</b>	<b>12842 NZD pp</b>
<b>ROYAL SUITE WITH OBSTRUCTED VIEW</b>	<b>12948 NZD pp</b>
<b>ROYAL SUITE</b>	<b>13506 NZD pp</b>
<b>PRESIDENTIAL SUITE</b>	<b>17033 NZD pp</b>

Wild Earth Travel

*Small Ships, Big Adventures*

**0800 945 3327** (within New Zealand) | +64 (0) 3 365 1355 | **1800 107 715** (within Australia)

info@wildearth-travel.com | wildearth-travel.com



# Wild Earth Travel

*Small Ships, Big Adventures*



**wildearth-travel.com**

**info@wildearth-travel.com**

## PRICING

**19-Dec-2026 to 30-Dec-2026**

<b>DORMITORY - CLASS C - 4 BEDS</b>	<b>5596 NZD pp</b>
<b>DOUBLE STATEROOM WITH OBSTRUCTED VIEW</b>	<b>8587 NZD pp</b>
<b>DOUBLE STATEROOM</b>	<b>9005 NZD pp</b>
<b>DELUXE</b>	<b>11064 NZD pp</b>
<b>JUNIOR SUITE WITHOUT BALCONY</b>	<b>12131 NZD pp</b>
<b>SINGLE STATEROOM</b>	<b>12355 NZD pp</b>
<b>PREMIUM SUITE</b>	<b>12842 NZD pp</b>
<b>ROYAL SUITE WITH OBSTRUCTED VIEW</b>	<b>12948 NZD pp</b>
<b>ROYAL SUITE</b>	<b>13506 NZD pp</b>
<b>PRESIDENTIAL SUITE</b>	<b>17033 NZD pp</b>

**Wild Earth Travel**  
*Small Ships, Big Adventures*

**0800 945 3327** (within New Zealand) | +64 (0) 3 365 1355 | **1800 107 715** (within Australia)

info@wildearth-travel.com | **wildearth-travel.com**