

Wild Earth Travel

Small Ships, Big Adventures



wildearth-travel.com

info@wildearth-travel.com

MYTHICAL ISLANDS AND WILD LANDSCAPES OF THE HEBRIDES - SCOTLAND LUXURY CRUISE

PONANT invites you on a 8-day cruise aboard Le Boreal for an extraordinary journey featuring the archaeological sites and sumptuous scenery of northern Scotland, on the edge of the Highlands, in the heart of the dreamlike and mysterious Hebrides archipelago.

From Glasgow, the capital of Scotland boasting a convivial atmosphere and authentic charm, your ship will sail to the Hebrides archipelago. Located to the west of Scotland, it has around 150 islands and will reveal its diversity to you over various all-new ports of call. You will make a stop on Iona, the birthplace of Christianity in Scotland, home to an impressive abbey, and probably where the Book of Kells was produced.

Then, you will reach the volcanic territory of Lunga, in the Treshnish Isles. The small island is a protected area for seabirds and home to colonies of puffins and guillemots among others. Canna, a charming islet inhabited by twenty or so souls and nicknamed "the garden of the Hebrides", will unveil itself, with its Christian, Celtic, Nordic and Scottish vestiges, in a natural setting of great beauty, a sanctuary for rich marine birdlife.

You will continue to the Outer Hebrides and you will discover Callanish on the Isle of Lewis. This all-new port of call will take you back in time to between 2900 and 2600 BC, the period during which the island's megalithic site would have been created... Before the circle of standing stones, aligned with the cardinal points, the mystery remains entire, the emotion is palpable.

Your ship will then cruise towards Ullapool on the shore of Loch Broom in the western Highlands. This former herring fishing port boasts a picturesque atmosphere made up of white cottages and colourful fishermen's boats.

You will call at Portree, the largest town on the Isle of Skye, located on the edge of a loch that extends inland.

The last stage of your journey will take you to Tobermory, a charming fishing port with multicoloured houses and with a distillery that produces a renowned single malt, before you arrive in Glasgow, your disembarkation port.



ation port.

Wild Earth Travel

Small Ships, Big Adventures

0800 945 3327 (within New Zealand) | +64 (0) 3 365 1355 | 1800 107 715 (within Australia)

info@wildearth-travel.com | wildearth-travel.com

Wild Earth Travel

Small Ships, Big Adventures



wildearth-travel.com

info@wildearth-travel.com

ITINERARY

Day 1 GLASGOW, SCOTLAND

In the heart of the Clyde Valley, the bustling city of Glasgow contrasts starkly with the wild beauty of the surrounding countryside. Scotland's biggest city overflows with landmarks from its extensive artistic heritage and outstanding architectural tradition. The city's chequerboard layout makes walking through the major pedestrian thoroughfares easy: go with the flow and let the lively street atmosphere take you past the many Victorian monuments. Don't miss the collections on display in the numerous museums and art galleries. The Kelvingrove Art Gallery and Museum is an outstanding example.

Day 2 IONA, HEBRIDES & LUNGA, TRESHNISH ISLES

Of all the islands in the Inner Hebrides, Iona is by far the most conducive to contemplation and meditation. And for good reason... it is here that St Columba landed from Ireland in 563 and undertook to establish Christianity in Scotland. Now an abbey, the island's true spiritual centre stands where the ancient monastery founded by the Irish missionary was built. Many kings of Scotland, including the legendary Macbeth, are buried in the nearby cemetery. In sunny weather, arriving on the Isle of Iona is a stunningly beautiful experience.

The Treshnish Isles lie off the Isle of Mull, to the west of Scotland, forming a small archipelago of seven islands of volcanic origin that belongs to the Inner Hebrides. Basalt cliffs and rocky coves shape the contours of the largest island, Lunga, while its inner lands are carpeted with moors. Inhabited until the 19th century, Lunga still bears the remains of traditional blackhouses, visible in situ. Designated a Special Protection Area, the island is now the kingdom of pelagic birds, including Atlantic puffins, and also home to a large seal colony. The craggy terrain and panoramic scenery of this island will delight bird-watchers and nature-lovers.

Day 3 CANNA, HEBRIDES

The Hebrides archipelago has many natural treasures, including Canna, a preserved little island with the pretty nickname "the garden of the Hebrides". Inhabited since the Neolithic period, Canna has only around twenty inhabitants today but its territory has a rich history featuring Christians, Celtic monks, Norse settlers and Scottish communities, all of whom left traces of their passage, monuments, churches or Celtic crosses as heritage. You will take the time to enjoy beauty of the nature here, between the land and the ocean, from the diversity of the floral species to the captivating dance of the seabirds, including guillemots, come to nest in the island's protected spaces.

Day 4 CALLANISH, OUTER HEBRIDES

In Scotland's Outer Hebrides, on the legendary Isle of Lewis, Callanish dazzles and surprises, fascinates and questions. On the eastern coast of the island, where land and sea rub shoulders and clash in the tumult of wild nature, discover the Callanish Stones megalithic site. No fewer than 51 stones stand in the middle of the peat fields. Deliberately arranged about 5,000 years ago, they are a mysterious testimony to the Stone Age. There are many theories as to the purpose of these stones -- a place of worship, a lunar calendar, an astronomic observatory or a healing centre -- but they remain an enigma. The singular atmosphere of this site lends itself to all sorts of interpretations, to all sorts of dreams and musings.

Day 5 ULLAPOOL, SCOTLAND

On the West Coast of the Northern Highlands, you're sure to be charmed by the picturesque city of Ullapool, so often admired by holidaymakers passing through. While this delightful fishing port has proven to be the ideal departure point for exploring the region on foot, the place itself is worth the detour. Stretching along the quiet, majestic banks of loch Broom, whitewashed cottages line the harbour and the pretty pebble beach. The view of the surrounding mountains only makes this image postcard-perfect. To find out more about Ullapool's origins, you can visit the town's museum dedicated to local history.

Wild Earth Travel

Small Ships, Big Adventures

0800 945 3327 (within New Zealand) | +64 (0) 3 365 1355 | 1800 107 715 (within Australia)

info@wildearth-travel.com | wildearth-travel.com

Wild Earth Travel

Small Ships, Big Adventures



wildearth-travel.com

info@wildearth-travel.com

Day 6 PORTREE, ISLE OF SKYE

Itineraries are subject to change.

Nestling in the crux of a gorgeous bay, Portree reflects the magnificence of the grandiose Isle of Skye as well as being its main town. Apart from the charm of its colourful houses, the town's outstanding location on the banks of a loch makes it a very pleasant place to be. From its colourful harbour bustling with local craftsmen's shops, you can take in a stunning view of the surrounding hills. Before trekking through the wilderness and drinking in the natural beauty of the Isle of Skye, check out some of the beautiful images in the Aros Centre.

Day 7 TOBERMORY, ISLE OF MULL

Located at the northernmost tip of the lovely Isle of Mull, Tobermory has to be one of the most beautiful natural seaports on Scotland's West Coast. Founded in 1788, this ancient fishing village has been converted to a leisure port highly appreciated today for its surroundings and the quiet charm it exudes. You will definitely be won over by the row of many-storied houses on the hillside, illuminating the harbour with their vibrant colours. Although the real spectacle is outdoors, no less interesting are the Mull Museum dedicated the local history and the exhibitions at the An Tobar art gallery.

Day 8 GLASGOW, SCOTLAND

In the heart of the Clyde Valley, the bustling city of Glasgow contrasts starkly with the wild beauty of the surrounding countryside. Scotland's biggest city overflows with landmarks from its extensive artistic heritage and outstanding architectural tradition. The city's chequerboard layout makes walking through the major pedestrian thoroughfares easy: go with the flow and let the lively street atmosphere take you past the many Victorian monuments. Don't miss the collections on display in the numerous museums and art galleries. The Kelvingrove Art Gallery and Museum is an outstanding example.

Please note:

Wild Earth Travel

Small Ships, Big Adventures

0800 945 3327 (within New Zealand) | +64 (0) 3 365 1355 | 1800 107 715 (within Australia)

info@wildearth-travel.com | wildearth-travel.com

Wild Earth Travel

Small Ships, Big Adventures



wildearth-travel.com

info@wildearth-travel.com

YOUR SHIP: LE BOREAL

YOUR SHIP:	Le Boreal
VESSEL TYPE:	Luxury Expedition / Cruise Ship
LENGTH:	142 meters
	264 (in twin cabins, 200 in
PASSENGER CAPACITY:	Antarctica)
BUILT/REFURBISHED:	2011

A superb mega-yacht with 132 cabins, she is the fruit of the expertise of the Italian Fincantieri shipyard and French sophistication, as interpreted by designer Jean-Philippe Nuel. Le Boreal remains faithful to our philosophy - to create a unique atmosphere, a subtle blend of luxury, intimacy and well-being. Superior materials, discreet elegance and a tasteful decor combined with exterior and interior lines to reflect a nautical mood, subtly revisited. On board, soothing neutral tones are enlivened by splashes of red, our signature theme linking tradition and innovation to create personal touches in the spirit of a "private yacht".

Cuisine

Loyal to the great French tradition, the haute cuisine on board is worthy of the finest restaurants, where discreet, attentive service is the hallmark.

Our two restaurants welcome you for breakfasts, lunch and dinner. The Gastronomic Restaurant, with a capacity of 268 persons, is situated on Le Liberte Deck and serves you French and international cuisine accompanied by fine wine. On the Grill Restaurant, you will have the opportunity to eat outside

and enjoy buffet lunch and themed dinner.

Life On Board

Whether you want to join other guests in the theatre or games area (Wii™ consoles, etc), or relax on your own in a quiet corner of the library, Le Boreal has been designed to meet the needs of every guest.

Everything has been done to preserve the independence of each guest to suit their personal tastes: lounges for lectures and shows, a spa in partnership with Carita™, but also more intimate spaces such as the library and internet corner. Comfortable cabins, nearly all with private balcony, are available for families either as triples or as communicating cabins. There is also a games area with Wii™ consoles, children's menus, and a baby-sitting service. Just as if you were on a private yacht, your time is your own to do as you please.

Fitted with the latest equipment (Kinesis Wall, running machine) and in partnership with the famous Carita™ brand, the Beauty Centre on Le Boreal welcomes you for some unforgettable moments of relaxation and pampering (beauty treatments, hairdresser, hammam, balneotherapy).

Wild Earth Travel

Small Ships, Big Adventures

0800 945 3327 (within New Zealand) | +64 (0) 3 365 1355 | 1800 107 715 (within Australia)

info@wildearth-travel.com | wildearth-travel.com



Wild Earth Travel

Small Ships, Big Adventures



wildearth-travel.com

info@wildearth-travel.com



eotherapy).

Wild Earth Travel

Small Ships, Big Adventures

0800 945 3327 (within New Zealand) | +64 (0) 3 365 1355 | 1800 107 715 (within Australia)

info@wildearth-travel.com | wildearth-travel.com

Wild Earth Travel

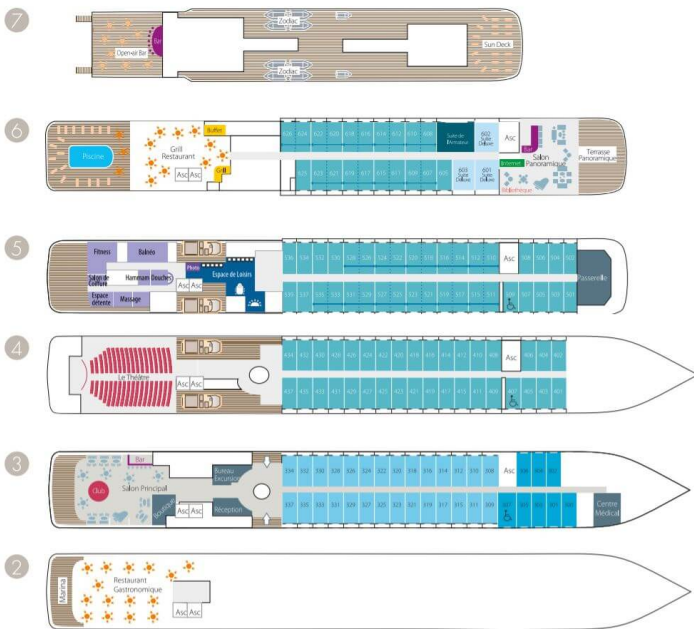
Small Ships, Big Adventures



wildearth-travel.com

info@wildearth-travel.com

INSIDE YOUR SHIP



DeLuxe Stateroom



DeLuxe Stateroom



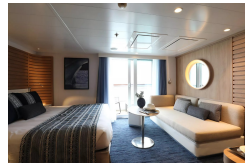
DeLuxe Suite



DeLuxe Suite Deck 3



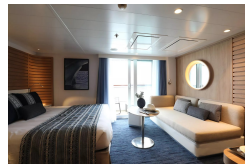
DeLuxe Suite Deck 4



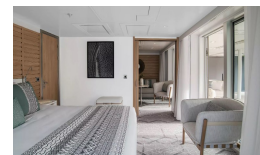
DeLuxe Suite Deck 5



DeLuxe Suite Deck 6



Grand DeLuxe Suite Deck 5



Wild Earth Travel

Small Ships, Big Adventures



wildearth-travel.com

info@wildearth-travel.com

PRICING

22-May-2025 to 29-May-2025

Superior Stateroom	7400 AUD pp
DeLuxe Stateroom	7990 AUD pp
Prestige Stateroom - Deck 4	8400 AUD pp
Prestige Stateroom - Deck 5	8660 AUD pp
Prestige Stateroom - Deck 6	8990 AUD pp
Deluxe Suite	12080 AUD pp
Prestige Suite - Deck 5	13000 AUD pp
Prestige Suite - Deck 6	13400 AUD pp
Owner's suite	16940 AUD pp

ADDITIONAL CHARGES:

Port Taxes 520 AUD pp

21-May-2026 to 28-May-2026

Deluxe Stateroom	7670 AUD pp
Prestige Deck 4	8060 AUD pp
Prestige Deck 5	8300 AUD pp
Prestige Deck 6	8630 AUD pp
Deluxe Suite Deck 4	11570 AUD pp
Deluxe Suite Deck 3	11570 AUD pp
Deluxe Suite Deck 6	11570 AUD pp
Deluxe Suite Deck 5	11570 AUD pp
Prestige Deck 5 Suite	12440 AUD pp
Prestige Deck 6 Suite	12840 AUD pp
Privilege Suite Deck 5	13160 AUD pp
Privilege Suite Deck 6	13160 AUD pp
Grand Deluxe Suite Deck 6	13560 AUD pp
Grand Deluxe Suite Deck 5	13560 AUD pp

Wild Earth Travel

Small Ships, Big Adventures

0800 945 3327 (within New Zealand) | +64 (0) 3 365 1355 | 1800 107 715 (within Australia)

info@wildearth-travel.com | wildearth-travel.com



Wild Earth Travel

Small Ships, Big Adventures



wildearth-travel.com

info@wildearth-travel.com

SPECIAL OFFERS

Online prices reflect the current brochure fare savings of up to 30%. Prices may change based on demand. Terms and conditions apply. This special offer is subject to availability. Please contact us for more details.



Wild Earth Travel

Small Ships, Big Adventures

0800 945 3327 (within New Zealand) | +64 (0) 3 365 1355 | 1800 107 715 (within Australia)

info@wildearth-travel.com | wildearth-travel.com