

Wild Earth Travel

Small Ships, Big Adventures

wildearth-travel.com

info@wildearth-travel.com

NATURAL SANCTUARIES & HERITAGE OF THE CARIBBEAN LUXURY CRUISE

On this 8-day all-new expedition cruise aboard Le Champlain, you will sail the Caribbean Sea discovering the lush landscapes of Central America, exploring the region's historical cities to learn more about their history, sharing with the local populations and creating unforgettable memories.

From Willemstad, the capital of Curaçao, set sail for Santa Marta. Located on the north of Columbia's Caribbean coast, this seaside resort is an infinite source of wonder, with its lush tropical forest, beautiful fine sandy beaches and Pre-Columbian treasures.

Then, you will visit the city of Cartagena de Indias in Colombia. Its port, fortress, and historic monuments, listed as a UNESCO World Heritage Site, offer many noteworthy sights.

Next, you will discover the golden sand and crystal-clear waters of the coral islets of the San Blas Islands. The Kuna live among the palm trees and pirogues; this people perpetuate, among other things, the traditional craft of molas, weaved textiles in sparkling colours.

San Lorenzo's Fort is your final port of call before Colon. Admire this unusual fortress built by the Spanish Crown to protect transatlantic trade. Now classified as a UNESCO World Heritage Site, it is an exceptional example of military architecture from the 17th and 18th centuries.

Caribbean Sea



centuries.

ITINERARY

Day 1 WILLEMSTAD

The capital of Curaçao stretches along the edge of St Ann's Bay on the island's south-west coast, and its historic centre is a UNESCO World Heritage site. A profusion of colour awaits you on the Handelskade quays, where it's a pleasure to stroll alongside the merchants' houses whose rainbow façades characterise Dutch colonial architecture. A few paces from here is the Floating Market, a true feast for the eyes and tastebuds. You can also visit Fort Rif and the Maritime Museum, or, in the quieter streets of Otrobanda, you'll enjoy browsing the craft shops and old-time bars at your own leisurely pace.

Day 2 AT SEA

Wild Earth Travel

Small Ships, Big Adventures

0800 945 3327 (within New Zealand) | +64 (0) 3 365 1355 | **1800 107 715** (within Australia)

info@wildearth-travel.com | **wildearth-travel.com**



Wild Earth Travel

Small Ships, Big Adventures

wildearth-travel.com

info@wildearth-travel.com

During your journey at sea, make the most of the many services and activities on board. Treat yourself to a moment of relaxation in the spa or stay in shape in the fitness centre. Depending on the season, let yourself be tempted by the swimming pool or a spot of sunbathing. This journey without a port of call will also be an opportunity to enjoy the conferences or shows proposed on board, depending on the activities offered, or to do some shopping in the boutique or to meet the PONANT photographers in their dedicated space. As for lovers of the open sea, they will be able to visit the ship's upper deck to admire the spectacle of the waves and perhaps be lucky enough to observe marine species. A truly enchanted interlude, combining comfort, rest and entertainment.

Day 3 SANTA MARTA

Santa Marta, located in the north of the Caribbean coast of Colombia, is a seaside town dominated by the majestic Sierra Nevada. The highest coastal chain of mountains in the world, it is listed as a Biosphere Reserve by UNESCO for the diversity of its fauna and flora. At the heart of the first Spanish colony, you will discover the heritage of the Tairona, the largest indigenous civilisation in Colombia. The eponymous national park offers you sumptuous landscapes, combining lush tropical forest and beautiful fine sandy beaches edged with crystal-clear water. The archaeological heritage and the Pre-Columbian treasures of the region are a source of endless enchantment.

Days 4 - 5 CARTAGENA

A splendid harbour city in the north of Columbia, a source of inspiration for the Colombian writer Gabriel Garcia Marquez, Cartagena will win you over with its well-preserved colonial architecture, and warm friendly atmosphere. You can visit the sumptuous UNESCO World Heritage fortified historical centre whose churches and houses have magnificent multi-coloured façades. A witness of Spanish domination, the San Felipe de Barajas fortress stands on top of a hill from where you can admire views over the whole city. The Las Bovedas neighbourhood will charm you with its arcades, used as prison cells during the 19th century civil wars.

Day 6 SAN BLAS ISLANDS

Located on the north-east coast of Panama, the San Blas archipelago is a string of coral islands in the heart of the Caribbean Sea. More than 300 islands and cays cover an area of 300 square kilometres offering travellers a multitude of treasures. Sheltered behind a long coral reef, the San Blas Islands are full of enchanting anchorages. The long sandy white beaches bound by crystal-clear waters will allow you to relax and enjoy incredible marine fauna before engaging with the Kunas Indian community. Still subsisting on hunting and fishing, they will welcome you in their villages of bamboo houses gathered near the beaches.

Day 7 FORT SAN LORENZO (COLÓN)

In the Colon District, Fort San Lorenzo faces the sea, its canons pointing towards the horizon as they used to under the Spanish Crown. This construction is part of a group of buildings exemplifying the military architecture of the 17th and 18th centuries along the Caribbean coast of Panama, hence its status as a UNESCO World Heritage Site. Wander along the fort's alleyways accompanied by the melodious singing of the birds that have made the surrounding forest their home. Enjoy an unforgettable port of call combining history and walking in nature.

Day 8 COLÓN

Colon is the second largest city in Panama, at the Caribbean entrance of the Panama Canal. Colon is today an important port, and the free trade zone created in 1953 contributed greatly to the development of the city. Colon was founded in 1850 by Americans working on the Panama railroad connecting the Atlantic and Pacific coasts through the isthmus of Panama; the city rapidly overshadowed the older Caribbean ports of Panama when the canal opened.

Please note:

Itineraries are subject to change.

Wild Earth Travel

Small Ships, Big Adventures

0800 945 3327 (within New Zealand) | +64 (0) 3 365 1355 | **1800 107 715** (within Australia)

info@wildearth-travel.com | **wildearth-travel.com**



Wild Earth Travel

Small Ships, Big Adventures

wildearth-travel.com

info@wildearth-travel.com

YOUR SHIP: LE CHAMPLAIN

YOUR SHIP:	Le Champlain
VESSEL TYPE:	Luxury
LENGTH:	127 metres
PASSENGER CAPACITY:	92 cabins
BUILT/REFURBISHED:	2017/2018

Featuring innovative and environmentally-friendly equipment, elegantly designed cabins, spacious suites with large windows, and lounge areas that open onto the outside, this new limited-capacity yacht boasting just 92 cabins and suites will offer you a truly unique cruising experience.

As the first ship in a new series, Le Champlain will embody the unique atmosphere that is the cruise line's hallmark: a subtle blend of refinement, intimacy and comfort.

Aboard this ship that flies the French flag, you will experience the incomparable pleasure of an intimate cruise, with the possibility of exploring an ever-increasing range of destinations in an ethnic-chic ambiance with luxury service.

Experience a luxurious setting where the accent is on authenticity and passion for travel.

RESTAURANTS

As it is an essential part of French culture, gastronomy will naturally have pride of place aboard this new ship. Through its two restaurants, Le Champlain will invite you on a journey to elegance and epicureanism.

In a relaxed atmosphere, a first dining area located on Deck 3 and able to seat 70 will serve grilled meats daily, along with a

variety of salads and desserts.

To the back of Deck 4, you will find a 260 m² panoramic restaurant which can accommodate all of our passengers in a single sitting. Designed differently to that on our other ships, this dining area, which opens onto the outside, will have a buffet of salads, desserts and cheeses at your disposal. Our discreet and attentive crew will provide table service for hot meals.

PUBLIC AREAS

Like Le Boreal and its sisterships, Le Champlain has many common areas that are designed and equipped to meet all of your needs while preserving the intimacy of each passenger.

A 140 m² reception area includes: A reception/concierge desk, An excursions desk, The ship's administrative services, The sales office, manned by our Guest Relations Officer, Our 50 m² boutique which sells clothing, jewellery, beauty products, postcards and various accessories, Toilets accessible to passengers with reduced mobility.

A new hydraulic platform with adjustable height provides: Easier boarding than on any other cruise ship, Easier Zodiac embarkation and disembarkation for expeditions, Easier access to the sea for swimming and practising various water sports such as kayaking or paddle-boarding.

A pool deck offering: A pool with a panoramic view, equipped with a counter-current swimming system, A pleasant solarium, An outdoor bar and lounge with armchairs and sofas.

A 200 m² main lounge which can accommodate all of our passengers to share convivial moments and to host activities organised during the day or evening.

Lastly, a theatre that seats 188, equipped with: The latest



Wild Earth Travel
Small Ships, Big Adventures

0800 945 3327 (within New Zealand) | +64 (0) 3 365 1355 | **1800 107 715** (within Australia)

info@wildearth-travel.com | **wildearth-travel.com**



Wild Earth Travel

Small Ships, Big Adventures

wildearth-travel.com

info@wildearth-travel.com

sound and lighting technology, A LED wall as the stage backdrop, for the projection of high-resolution images and videos.



and videos.



Wild Earth Travel

Small Ships, Big Adventures

0800 945 3327 (within New Zealand) | +64 (0) 3 365 1355 | **1800 107 715** (within Australia)

info@wildearth-travel.com | **wildearth-travel.com**

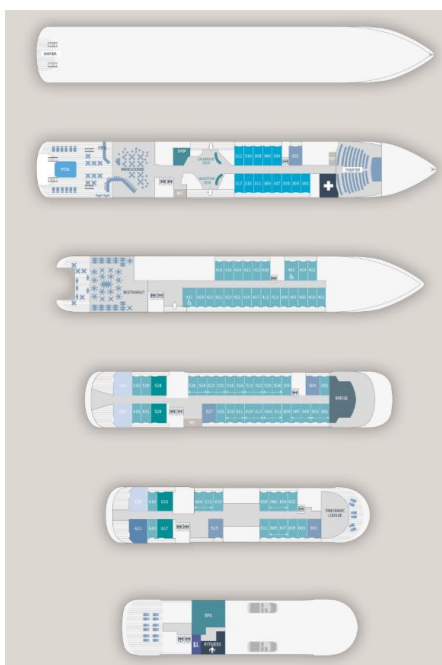
Wild Earth Travel

Small Ships, Big Adventures

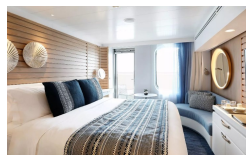
wildearth-travel.com

info@wildearth-travel.com

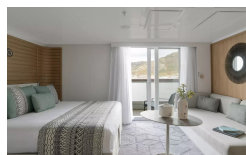
INSIDE YOUR SHIP



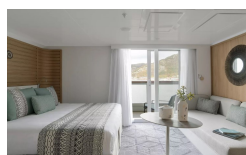
Deluxe Stateroom



Deluxe Suite Deck 4



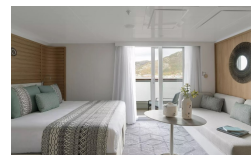
Deluxe Suite Deck 6



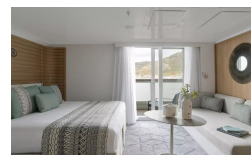
Grand Deluxe Suite Deck 6



Deluxe Suite



Deluxe Suite Deck 5



Grand Deluxe Suite



Owner's Suite



Wild Earth Travel
Small Ships, Big Adventures

0800 945 3327 (within New Zealand) | +64 (0) 3 365 1355 | 1800 107 715 (within Australia)

info@wildearth-travel.com | wildearth-travel.com



Wild Earth Travel

Small Ships, Big Adventures

wildearth-travel.com

info@wildearth-travel.com

PRICING

26-Nov-2025 to 03-Dec-2025

Deluxe Stateroom	6620 AUD pp
Prestige Stateroom Deck 4	7350 AUD pp
Prestige Stateroom Deck 5	7720 AUD pp
Prestige Stateroom Deck 6	8160 AUD pp
Deluxe Suite Deck 6	10630 AUD pp
Deluxe Suite Deck 4	10630 AUD pp
Deluxe Suite	10630 AUD pp
Deluxe Suite Deck 5	10630 AUD pp
Prestige Suite Deck 5	12820 AUD pp
Prestige Suite Deck 6	13400 AUD pp
Privilege Suite Deck 6	13840 AUD pp
Privilege Suite	13840 AUD pp
Grand Deluxe Suite	14280 AUD pp
Grand Deluxe Suite Deck 6	14280 AUD pp
Owner's Suite	17740 AUD pp

ADDITIONAL CHARGES:

Port Taxes 520 AUD pp



Wild Earth Travel
Small Ships, Big Adventures

0800 945 3327 (within New Zealand) | +64 (0) 3 365 1355 | **1800 107 715** (within Australia)

info@wildearth-travel.com | **wildearth-travel.com**



Wild Earth Travel

Small Ships, Big Adventures



wildearth-travel.com

info@wildearth-travel.com

SPECIAL OFFERS

Online prices reflect the current brochure fare savings of up to 30%. Prices may change based on demand. Terms and conditions apply. This special offer is subject to availability. Please contact us for more details.



Wild Earth Travel

Small Ships, Big Adventures

0800 945 3327 (within New Zealand) | +64 (0) 3 365 1355 | **1800 107 715** (within Australia)

info@wildearth-travel.com | **wildearth-travel.com**