

Wild Earth Travel

Small Ships, Big Adventures

wildearth-travel.com

info@wildearth-travel.com

PATAGONIA & CHILEAN FJORDS - SOUTHERN CHILE & THE PATAGONIA ICE FIELD

In the Chilean Patagonia, one of the southernmost regions of the world, sail between massive blue-hued glaciers and the sharp peaks of the Andes mountains. This untamed terrain is home to fjords, channels, and islets with beaches teeming with marine wildlife, birds, and stunning natural landscapes best accessed by ship or Zodiac. On this wilderness expedition, visit Puerto Cisnes, the San Rafael Bay and Glacier, the Gulf of Penas, the isolated village of Puerto Eden, the Strait of Magellan and Tierra del Fuego, and the Beagle Channel.



ITINERARY

Day 1: Puerto Montt, Embarkation

Your journey begins in Puerto Montt, Chile, with boarding between 3 and 4 PM (15:00 - 16:00 hr.)

Day 2: Puerto Cisnes

Wild Earth Travel

Small Ships, Big Adventures

0800 945 3327 (within New Zealand) | +64 (0) 3 365 1355 | 1800 107 715 (within Australia)

info@wildearth-travel.com | wildearth-travel.com



Wild Earth Travel

Small Ships, Big Adventures



wildearth-travel.com

info@wildearth-travel.com

We head south to the village of Puerto Cisnes, in the remote region of Aysen, for an afternoon visit. We visit the seaport and explore the area, with its many fjords, islands, and channels. We hope to visit Magdalena Island, where we have a good chance of seeing penguins, cormorants, sea lions, and river otters.

Days 3: San Rafael

The expedition continues with a full day of activities planned at San Rafael Bay. Declared a Biosphere Reserve, the park is the main entry point to Chile's Northern Icefields. San Rafael Glacier is the main attraction, but we will also enjoy exploring the surrounding fjords, channels, islands, and coves.

Day 4: Gulf of Penas

We cross the Gulf of Penas, enjoying beautiful views of the surrounding mountain ranges. As we continue to sail southward, the expedition team tells you about the indigenous inhabitants of these southern lands, the early Spanish colonizers, and famous explorers such as Charles Darwin, Fitz Roy, and Alberto de Agostini. You also learn about the region's biodiversity with presentations on the local marine life and flora.

Day 5: Puerto Eden

We sail the dramatic, 18 mt-wide English Narrows on our way to the famous fishing village of Puerto Eden, one of Chile's most isolated settlements. The village sits on the eastern side of Wellington Island and is only accessible by sea. Puerto Eden has no roads. Instead, a network of wooden boardwalks connects the houses and establishments. Rich evergreens cover the landscape steeped in indigenous traditions and culture, being home to the Kaweskar people.

Day 6: Madre de Dios Island

We continue sailing south towards Madre de Dios Island, several natural caves that create a unique landscape evocatively named Marble Glaciers. In one of

those caves, skeletons of whales 2600 to 3500 years old have been discovered. Many caves near the coast were used in the past as burial sites by the Kaweskar people. The whole region is an ideal place for exploration, part of an uninhabited archipelago west of the Trinidad Channel and Concepcion Channel. The island is composed partly of limestone, with

Day 7: Strait of Magellan and Tierra del Fuego

While cruising along the Strait of Magellan, we explore the waters of the fiords that branch out from Tierra del Fuego, a region named after the fires that burned in local native settlements when the first European explorers arrived. We follow the remote coast around the Francisco Coloane Marine Park, a protected area in the southern hemisphere where whales feed. If you are lucky, you may be able to witness Humpback or Sei whales breaching in the distance. You may also see dolphins, sea lions, seals, penguins, albatrosses, and petrels.

Day 8: Beagle Channel

We continue along the Beagle Channel, a striking narrow passage, partly belonging to Chile and partly to Argentina. We sail along Glacier Alley, a 240 km (150 mi) stretch within the Channel in Southern Chile, home to a family of five glaciers: the Holanda, Italia, Francia, Alemania, and Romanche glaciers. We hope to explore the Garibaldi Fjord where we will be surrounded by hanging and tidewater glaciers; nearby waterfalls are so close they can almost be touched. Spectacular ice formations are sprawled along the sea, forming part of the Southern Patagonian Ice field and the snow-dusted Darwin Range. It is a perfect time to enjoy the graceful view and, if possible, get a glimpse of sea lions and steamer ducks. The Beagle Channel, with the Strait of Magellan to the north and the Drake Passage to the south, is one of the three navigable passages in South America connecting the Pacific and Atlantic Oceans. On our way to Ushuaia, Argentina, the largest settlement on the channel, we will make a brief nighttime technical stop in Port Williams to comply with Chilean customs and immigration requirements.

Day 9: Ushuaia, Disembarkation

Morning arrival in Ushuaia and disembarkation.

Please Note:

Wild Earth Travel

Small Ships, Big Adventures

0800 945 3327 (within New Zealand) | +64 (0) 3 365 1355 | 1800 107 715 (within Australia)

info@wildearth-travel.com | wildearth-travel.com



Wild Earth Travel

Small Ships, Big Adventures



wildearth-travel.com

info@wildearth-travel.com

The itinerary presented above is for reference. As for any expedition cruise, our route will be subject to weather conditions and the requirements of the Chilean authorities.



Wild Earth Travel

Small Ships, Big Adventures

0800 945 3327 (within New Zealand) | +64 (0) 3 365 1355 | 1800 107 715 (within Australia)

info@wildearth-travel.com | wildearth-travel.com

Wild Earth Travel

Small Ships, Big Adventures

wildearth-travel.com

info@wildearth-travel.com

YOUR SHIP: MAGELLAN EXPLORER

YOUR SHIP:	Magellan Explorer
VESSEL TYPE:	Expedition
LENGTH:	90.7 m - 298 ft.
PASSENGER CAPACITY:	100 (only 69 passengers for Air-Cruise operations)
BUILT/REFURBISHED:	2018

MV Magellan Explorer features 50 passenger suites and cabins in five categories of accommodation, including dedicated single cabins. The cabins are very spacious, ranging in size from 40 m² (440 sq. ft.) to 20 m² (220 sq. ft.). All double cabins have two twin beds that can be configured as one queen-size bed, offering great flexibility to our guests. 42 cabins feature a large window and a private balcony, while 8 cabins feature a porthole. All cabins feature a private bathroom and a sitting area.

Public areas include a large, forward-facing observation lounge, an observation deck, a dining room that accommodates all guests and expedition staff in a single sitting, two meeting rooms, a gift shop, a protected outdoor barbecue area, a gym, and a sauna. The bow of the ship is accessible to guests to offer expansive views during exploration. Optional adventure activities, such as kayaking and snowshoeing, are available.

Specific measures have been taken to minimize MV Magellan Explorer's carbon footprint, including state-of-the-art engines that meet MARPOL's stringent Tier III emission standards. To minimize fuel consumption, a waste heat recovery system

recycles the heat produced by the ship's engines and repurposes it to power the ship's heating system and to warm the water used on board.



recycles the heat produced by the ship's engines and repurposes it to power the ship's heating system and to warm the water used on board.

Wild Earth Travel

Small Ships, Big Adventures

0800 945 3327 (within New Zealand) | +64 (0) 3 365 1355 | 1800 107 715 (within Australia)

info@wildearth-travel.com | wildearth-travel.com

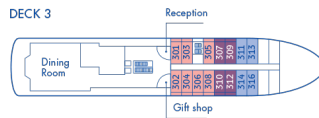
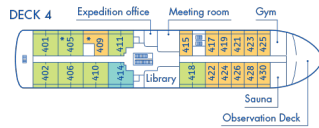
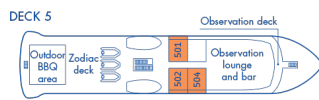
Wild Earth Travel

Small Ships, Big Adventures

wildearth-travel.com

info@wildearth-travel.com

INSIDE YOUR SHIP



- CABINS**
- Grand Suite
 - Penthouse Suite
 - Deluxe Veranda Cabin
 - Veranda Cabin
 - Porthole Cabin
 - Triple Suite
 - ✳ Only available with queen-size bed

Deluxe Veranda Cabin



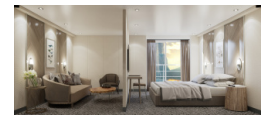
PH Suite



Porthole Cabin



Suite



Triple Suite



Veranda Cabin



Wild Earth Travel
Small Ships, Big Adventures

0800 945 3327 (within New Zealand) | +64 (0) 3 365 1355 | 1800 107 715 (within Australia)

info@wildearth-travel.com | wildearth-travel.com

Wild Earth Travel

Small Ships, Big Adventures

wildearth-travel.com

info@wildearth-travel.com

PRICING

15-Sep-2025 to 23-Sep-2025

Triple Suite	5995 USD pp
Porthole Cabin	6495 USD pp
Veranda Cabin	6995 USD pp
Deluxe Veranda Cabin	7495 USD pp
Suite	8595 USD pp
PH Suite	8995 USD pp

Triple Suite	5995 USD pp
Porthole Cabin	6495 USD pp
Veranda Cabin	6995 USD pp
Deluxe Veranda Cabin	7495 USD pp
Suite	8595 USD pp
PH Suite	8995 USD pp

04-Apr-2026 to 12-Apr-2026

Triple Suite	5995 USD pp
Porthole Cabin	6495 USD pp
Veranda Cabin	6995 USD pp
Deluxe Veranda Cabin	7495 USD pp
Suite	8595 USD pp
PH Suite	8995 USD pp

15-Sep-2026 to 23-Sep-2026

Triple Suite	5995 USD pp
Porthole Cabin	6495 USD pp
Veranda Cabin	6995 USD pp
Deluxe Veranda Cabin	7495 USD pp
Suite	8595 USD pp
PH Suite	8995 USD pp

03-Apr-2027 to 11-Apr-2027

Wild Earth Travel

Small Ships, Big Adventures

0800 945 3327 (within New Zealand) | +64 (0) 3 365 1355 | 1800 107 715 (within Australia)

info@wildearth-travel.com | wildearth-travel.com



Wild Earth Travel

Small Ships, Big Adventures



wildearth-travel.com

info@wildearth-travel.com

SAVE \$1,000 USD PER PERSON!

\$1,000 USD off per person on Patagonia & Chilean Fjords sea voyages. The promotion is available until June 30, 2025. Terms and conditions apply. This special offer is subject to availability. Please contact us for more details.

Optional extras & upgrades

Optional tours/excursions/packages available. Please get in touch for more information.



Wild Earth Travel

Small Ships, Big Adventures

0800 945 3327 (within New Zealand) | +64 (0) 3 365 1355 | **1800 107 715** (within Australia)

info@wildearth-travel.com | wildearth-travel.com