

Wild Earth Travel

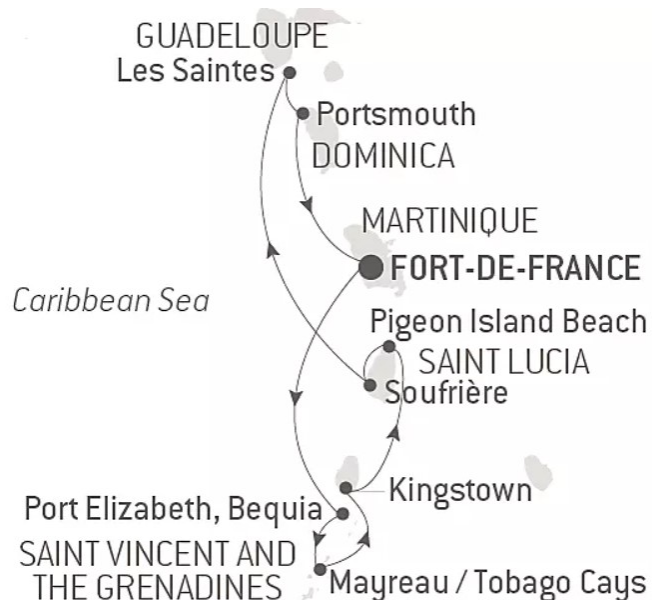
Small Ships, Big Adventures

wildearth-travel.com

info@wildearth-travel.com

PEARLS OF THE CARIBBEAN - LUXURY CRUISE

PONANT brings you an itinerary to the heart of the most enchanting islands in the Caribbean Sea. Board on Le Bellot for a 9-day cruise combining long white-sand beaches and the easy Creole way of life. From Fort-de-France, the capital of Martinique, Le Bellot will set sail to Saint Vincent and the Grenadines and Bequia Island, the 'whale-hunting island', and its wild and unspoiled coastline. You will enjoy the lively atmosphere of Port Elizabeth, the island's main town. After a call at Mayreau, your sailing yacht will anchor in the Tobago Cays National Park. This rosary of islands, bound together by the most beautiful coral reef in the West Indies, will reveal its incredible underwater wildlife and its secret coves. You will then island hop gently towards Saint Lucia and its two majestic rocky peaks soaring straight from the sea, a unique location listed as UNESCO World Heritage site. You will sail towards the enchanting setting offered by the island of Dominica - the Nature Island - before you finally reach Fort-de-France. An experienced diving instructor is on board for the entire cruise, enabling you to safely enjoy swimming and scuba diving.



ITINERARY

Day 1 FORT-DE-FRANCE

Located on the western coast of Martinique, Fort-de-France will amaze you by the splendour of its bay, a magnificent cut-out in the coastline, considered as one of the most beautiful in the world. At the harbour mouth, on its strip of land, fort Saint-Louis overlooks the capital city of Martinique. If you climb up to it, you can see some breath-taking views. Saint Louis Cathedral and the Schoelcher library bear witness to a secular history, intimately linked to the island's story. Why not try some fresh coconut at the colourful Grand Marche. Two really pleasant places you can take a breather in, right in the heart of the city, are the garden of Balata and the Aime Cesaire park.

Day 2 PORT ELIZABETH, BEQUIA ISLAND

Wild Earth Travel

Small Ships, Big Adventures

0800 945 3327 (within New Zealand) | +64 (0) 3 365 1355 | **1800 107 715** (within Australia)

info@wildearth-travel.com | **wildearth-travel.com**

Wild Earth Travel

Small Ships, Big Adventures

wildearth-travel.com

info@wildearth-travel.com

In the heart of the Caribbean, Bequia is the second-largest of 32 islands that make up the country of St Vincent and the Grenadines. You will love the lively and picturesque atmosphere of Port Elizabeth, the island's main town. From the port, a promenade lined with beautiful traditional houses, landscaped gardens and small restaurants runs along the shoreline. It leads to Princess Margaret Beach, a wild beach where Princess Margaret herself has stayed and which seems to emerge directly from the tropical forest. From rainforest to lush meadows and long stretches of sand, Bequia will offer you a natural setting that is conducive to lovely walks and to spending time on the beach.

Day 3 MAYREAU ISLAND

Among the string of paradisiac islands with their sandy beaches that form the Saint Vincent and the Grenadines archipelago, Mayreau is the smallest. Its peaceful and idyllic atmosphere, far from the madding crowd, invites you to relax. On shore, enjoy a shaded and fully equipped beach from which to go snorkelling if you'd like to observe the colourful fish around the coral sitting at the foot of the rocks that stretch across the bay.

Day 4 TOBAGO CAYS

Scattered between St Vincent and Grenada, the Tobago Cays comprises five little islands: Petit Rameau, Petit Bateau, Baradal, Petit Tabac and Jamesby. This rosary of uninhabited cays in the southern West Indies is a marine park whose turquoise lagoons provide a home and safe haven for some outstanding marine fauna, including peaceful green turtles. Girded and united by a coral reef, these secluded islands are a peaceful paradise for divers, swimmers and snorkellers.

Day 5 KINGSTOWN

Kingstown is the capital of Saint Vincent and the Grenadines, independent since 1979 but still a member of the British Commonwealth. Some of the 32 islands of the Grenadines are inhabited, like Mustique, some are not, like Tobago Cays. But they are all renowned for crystal clear, calm waters, and some of the best snorkeling and diving in the world. The Botanic Garden in Kingstown is the oldest of its kind in the Western Hemisphere and well worth a visit, as is Fort Charlotte, featuring panoramic views of the archipelago. La

Soufriere, Saint Vincent's active volcano, dominates the northern end of the island, where it periodically erupts (most recently in April 2021), scarring the surrounding land with lava and ash.

Day 6 PIGEON ISLAND BEACH & SOUFRIÈRE

Linked to St Lucia by a sand causeway, Pigeon Island has been a designated National Park since 1979. On this wild and pristine land, you will be inspired to take pleasant walks amid the tropical vegetation and through a magnificent tree-filled garden. You will also be irresistibly drawn to the two pretty little sandy beaches nestling on the southern side and bathed by crystal-clear waters. While snorkelling, be sure to explore the underwater world that is teeming with life, along the rocks lining this peninsula's coast. You will thoroughly enjoy the calm and beauty of this place, which is really conducive to simply relaxing. Nestled in the crook of a breath-taking bay, the former capital of St Lucia is brimming with attractions. Soufriere is famous for The Pitons, volcanic spires that tower over the entrance to the town. In the vicinity of the lush botanical gardens, you will be able to enjoy the curative powers of the Diamond Falls mineral baths. From the beach at the north end of the bay, you can set off to explore the reefs that are home to stunning gardens of sea fans at the foot of the cliffs that plunge into the sea.

Day 7 LES SAINTES

During the feast of All Saints in 1493, Christopher Columbus discovered this archipelago of nine islands that he named "The Saints". Today, only two of them are inhabited. Terre de Haut, in the east, is dominated by the Morne Mire hill; at the summit stands Fort Napoleon, paying homage to the islands' history. In the heart of the botanical garden, shared by iguanas and cacti, there is an exceptional view of the Baie des Saintes, one of the most beautiful in the world. The long shady beach of Pompierre, where it is forbidden to drop anchor, is a peaceful place for a swim, while Pain de Sucre Beach offers wonderful opportunities for snorkelling. On the island, don't forget to taste the local speciality, the "tourment d'amour", a cake made with coconut.

Day 8 PORTSMOUTH

With its mountainous terrain, vast tropical forest, hot springs, rivers and spectacular waterfalls, Dominica is undoubtedly the wildest island in the Caribbean. Protected by several national parks, this little-known land, located

Wild Earth Travel

Small Ships, Big Adventures

0800 945 3327 (within New Zealand) | +64 (0) 3 365 1355 | **1800 107 715** (within Australia)

info@wildearth-travel.com | **wildearth-travel.com**



Wild Earth Travel

Small Ships, Big Adventures

wildearth-travel.com

info@wildearth-travel.com

in the heart of the Caribbean Sea, between Guadeloupe and Martinique, will inspire adventure and exploration. During your port of call, do not miss out on discovering the enchanting landscapes of the Indian River: navigating through this dense mangrove, in which creepers, ferns, forest trees and giant roots are interweaved, is a magical experience, a fascinating voyage into the heart of an almost mystical natural universe.

Day 9 FORT-DE-FRANCE

Located on the western coast of Martinique, Fort-de-France will amaze you by the splendour of its bay, a magnificent cut-out in the coastline, considered as one of the most beautiful in the world. At the harbour mouth, on its strip of land, fort Saint-Louis overlooks the capital city of Martinique. If you climb up to it, you can see some breath-taking views. Saint Louis Cathedral and the Schoelcher library bear witness to a secular history, intimately linked to the island's story. Why not try some fresh coconut at the colourful Grand Marche. Two really pleasant places you can take a breather in, right in the heart of the city, are the garden of Balata and the Aime Cesaire park.

Please Note:

Itineraries are subject to change.

Wild Earth Travel

Small Ships, Big Adventures

0800 945 3327 (within New Zealand) | +64 (0) 3 365 1355 | **1800 107 715** (within Australia)

info@wildearth-travel.com | **wildearth-travel.com**



Wild Earth Travel

Small Ships, Big Adventures

wildearth-travel.com

info@wildearth-travel.com

YOUR SHIP: LE BELLOT

YOUR SHIP:	Le Bellot
VESSEL TYPE:	Luxury Expedition / Cruise Ship
LENGTH:	131 metres
PASSENGER CAPACITY:	184
BUILT/REFURBISHED:	2019-2020

Featuring innovative and environmentally-friendly equipment, elegantly designed staterooms, spacious suites with large windows, and lounge areas that open onto the outside, this new limited-capacity yacht boasting just 92 staterooms and suites will offer you a truly unique cruising experience.

As the first ship in a new series that remains true to the Ponant spirit, Le Bellot will embody the unique atmosphere that is the cruise line's hallmark: a subtle blend of refinement, intimacy and comfort.

Aboard this ship that flies the French flag, you will experience the incomparable pleasure of an intimate cruise, with the possibility of exploring an ever-increasing range of destinations in an ethnic-chic ambiance with luxury service.

Experience a luxurious setting where the accent is on authenticity and passion for travel.

RESTAURANTS

As it is an essential part of French culture, gastronomy will naturally have pride of place aboard this new ship.

To the back of Deck 4, you will find a 260 m² panoramic restaurant which can accommodate all of our passengers in a single sitting. Designed differently to that on our other ships, this

dining area, which opens onto the outside, will have a buffet of salads, desserts and cheeses at your disposal. Our discreet and attentive crew will provide table service for hot meals.

In a relaxed atmosphere, an outdoor grill on Deck 3 will serve grilled meats with a variety of salads and desserts.

PUBLIC AREAS

Le Bellot has many common areas that are designed and equipped to meet all of your needs while preserving the intimacy of each passenger.

A 140 m² reception area includes:

A reception/concierge desk,

An excursions desk,

The ship's administrative services,

The sales office, manned by our Guest Relations Officer,

Our 50 m² boutique which sells clothing, jewellery, beauty products, postcards and various accessories,

Toilets accessible to passengers with reduced mobility.

A new hydraulic platform with adjustable height provides:

Easier boarding than on any other cruise ship,

Easier Zodiac embarkation and disembarkation for expeditions,

Easier access to the sea for swimming and practising various water sports such as kayaking or paddle-boarding.

A pool deck offering:

A pool with a panoramic view, equipped with a counter-current swimming system,

A pleasant solarium,

An outdoor bar and lounge with armchairs and sofas.

A 200 m² main lounge which can accommodate all of our passengers to share convivial moments and to host activities



Wild Earth Travel
Small Ships, Big Adventures

0800 945 3327 (within New Zealand) | +64 (0) 3 365 1355 | **1800 107 715** (within Australia)

info@wildearth-travel.com | **wildearth-travel.com**



Wild Earth Travel

Small Ships, Big Adventures

wildearth-travel.com

info@wildearth-travel.com

organised during the day or evening.

Lastly, a theatre that seats 188, equipped with:

The latest sound and lighting technology,

A LED wall as the stage backdrop, for the projection of high-resolution images and videos.



and videos.



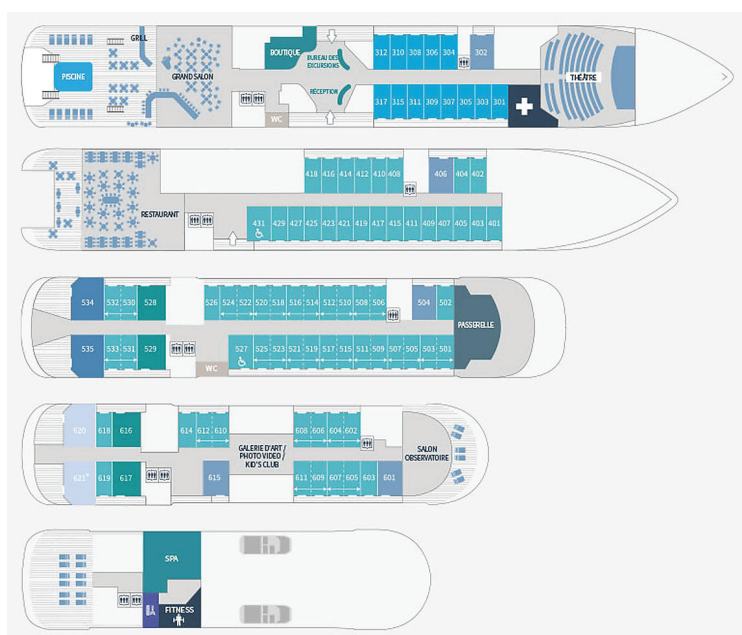
Wild Earth Travel

Small Ships, Big Adventures

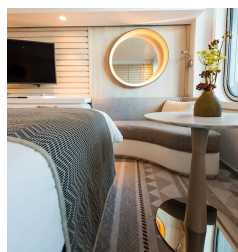
0800 945 3327 (within New Zealand) | +64 (0) 3 365 1355 | **1800 107 715** (within Australia)

info@wildearth-travel.com | **wildearth-travel.com**

INSIDE YOUR SHIP



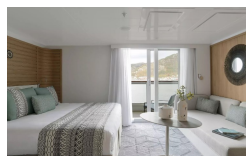
Deluxe Stateroom



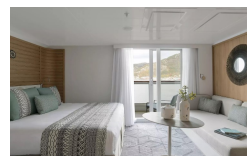
Deluxe Suite



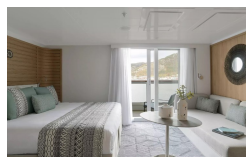
Deluxe Suite Deck 3



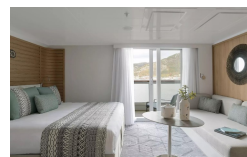
Deluxe Suite Deck 4



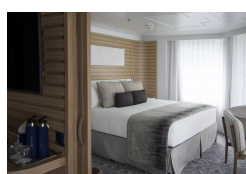
Deluxe Suite Deck 5



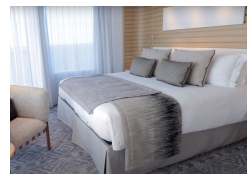
Deluxe Suite Deck 6



Grand Deluxe Suite



Grand Deluxe Suite Deck 5



Wild Earth Travel

Small Ships, Big Adventures

wildearth-travel.com

info@wildearth-travel.com

PRICING

29-Nov-2025 to 07-Dec-2025

Deluxe Stateroom	7980 AUD pp
Prestige Deck 4	8410 AUD pp
Prestige Deck 5	8650 AUD pp
Prestige Deck 6	8990 AUD pp
Deluxe Suite Deck 3	12090 AUD pp
Deluxe Suite Deck 4	12090 AUD pp
Deluxe Suite Deck 5	12090 AUD pp
Deluxe Suite Deck 6	12090 AUD pp
Prestige Deck 5 Suite	13000 AUD pp
Prestige Deck 6 Suite	13420 AUD pp
Privilege Suite Deck 5	13760 AUD pp
Privilege Suite Deck 6	13760 AUD pp
Grand Deluxe Suite Deck 5	14170 AUD pp
Grand Deluxe Suite Deck 6	14170 AUD pp

Deluxe Stateroom	7110 AUD pp
Prestige Stateroom Deck 4	7490 AUD pp
Prestige Stateroom Deck 5	7710 AUD pp
Prestige Stateroom Deck 6	8000 AUD pp
Deluxe Suite Deck 6	10740 AUD pp
Deluxe Suite Deck 5	10740 AUD pp
Deluxe Suite Deck 4	10740 AUD pp
Deluxe Suite	10740 AUD pp
Prestige Suite Deck 5	11540 AUD pp
Prestige Suite Deck 6	11910 AUD pp
Privilege Suite Deck 6	12210 AUD pp
Privilege Suite	12210 AUD pp
Grand Deluxe Suite	12570 AUD pp
Grand Deluxe Suite Deck 6	12570 AUD pp
Owner's Suite	17070 AUD pp

12-Dec-2025 to 20-Dec-2025

Wild Earth Travel

Small Ships, Big Adventures

0800 945 3327 (within New Zealand) | +64 (0) 3 365 1355 | **1800 107 715** (within Australia)

info@wildearth-travel.com | wildearth-travel.com

Wild Earth Travel

Small Ships, Big Adventures

wildearth-travel.com

info@wildearth-travel.com

PRICING

20-Dec-2025 to 28-Dec-2025

Deluxe Stateroom	8420 AUD pp
Prestige Stateroom Deck 4	8870 AUD pp
Prestige Stateroom Deck 5	9140 AUD pp
Prestige Stateroom Deck 6	9490 AUD pp
Deluxe Suite	12770 AUD pp
Deluxe Suite Deck 5	12770 AUD pp
Deluxe Suite Deck 4	12770 AUD pp
Deluxe Suite Deck 6	12770 AUD pp
Prestige Suite Deck 5	13730 AUD pp
Prestige Suite Deck 6	14180 AUD pp
Privilege Suite	14540 AUD pp
Privilege Suite Deck 6	14540 AUD pp
Grand Deluxe Suite	14970 AUD pp
Grand Deluxe Suite Deck 6	14970 AUD pp
Owner's Suite	16480 AUD pp

28-Jan-2026 to 04-Feb-2026

Deluxe Stateroom	7110 AUD pp
Prestige Deck 4	7490 AUD pp
Prestige Deck 5	7700 AUD pp
Prestige Deck 6	8000 AUD pp
Deluxe Suite Deck 6	10740 AUD pp
Deluxe Suite Deck 3	10740 AUD pp
Deluxe Suite Deck 4	10740 AUD pp
Deluxe Suite Deck 5	10740 AUD pp
Prestige Deck 5 Suite	11540 AUD pp
Prestige Deck 6 Suite	11910 AUD pp
Privilege Suite Deck 6	12210 AUD pp
Privilege Suite Deck 5	12210 AUD pp
Grand Deluxe Suite Deck 5	12570 AUD pp
Grand Deluxe Suite Deck 6	12570 AUD pp

Wild Earth Travel

Small Ships, Big Adventures

0800 945 3327 (within New Zealand) | +64 (0) 3 365 1355 | **1800 107 715** (within Australia)

info@wildearth-travel.com | wildearth-travel.com

Wild Earth Travel

Small Ships, Big Adventures

wildearth-travel.com

info@wildearth-travel.com

PRICING

04-Feb-2026 to 11-Feb-2026

Deluxe Stateroom	5850 AUD pp
Prestige Deck 4	6150 AUD pp
Prestige Deck 5	6330 AUD pp
Prestige Deck 6	6580 AUD pp
Deluxe Suite Deck 6	8800 AUD pp
Deluxe Suite Deck 3	8800 AUD pp
Deluxe Suite Deck 5	8800 AUD pp
Deluxe Suite Deck 4	8800 AUD pp
Prestige Deck 5 Suite	9460 AUD pp
Prestige Deck 6 Suite	9770 AUD pp
Privilege Suite Deck 5	10010 AUD pp
Privilege Suite Deck 6	10010 AUD pp
Grand Deluxe Suite Deck 5	10300 AUD pp
Grand Deluxe Suite Deck 6	10300 AUD pp

08-Mar-2026 to 16-Mar-2026

Deluxe Stateroom	7980 AUD pp
Prestige Stateroom Deck 4	8410 AUD pp
Prestige Stateroom Deck 5	8660 AUD pp
Prestige Stateroom Deck 6	8990 AUD pp
Deluxe Suite Deck 5	12090 AUD pp
Deluxe Suite Deck 6	12090 AUD pp
Deluxe Suite	12090 AUD pp
Deluxe Suite Deck 4	12090 AUD pp
Prestige Suite Deck 5	13000 AUD pp
Prestige Suite Deck 6	13420 AUD pp
Privilege Suite Deck 6	13760 AUD pp
Privilege Suite	13760 AUD pp
Grand Deluxe Suite Deck 6	14170 AUD pp
Grand Deluxe Suite	14170 AUD pp
Owner's Suite	16480 AUD pp

ADDITIONAL CHARGES:

Port Taxes & Fees 590 AUD pp

Wild Earth Travel
Small Ships, Big Adventures

0800 945 3327 (within New Zealand) | +64 (0) 3 365 1355 | **1800 107 715** (within Australia)

info@wildearth-travel.com | wildearth-travel.com



Wild Earth Travel

Small Ships, Big Adventures



wildearth-travel.com

info@wildearth-travel.com

SPECIAL OFFERS

Online prices reflect the current brochure fare savings of up to 30%. Prices may change based on demand. Terms and conditions apply. This special offer is subject to availability. Please contact us for more details.



Wild Earth Travel

Small Ships, Big Adventures

0800 945 3327 (within New Zealand) | +64 (0) 3 365 1355 | **1800 107 715** (within Australia)

info@wildearth-travel.com | **wildearth-travel.com**