

# Wild Earth Travel

*Small Ships, Big Adventures*

**wildearth-travel.com**

**info@wildearth-travel.com**

## RAJA AMPAT & SPICE ISLANDS - INDONESIA EXPEDITION

The rich history and diverse marine life of Raja Ampat and Spice Islands are brought to life on this 18-night voyage. Aboard Coral Geographer retrace the ancient trade routes of spice merchants trading Chinese silks for cloves, Indian cotton for nutmeg and Arabian coffee for pepper. Explore some of the hundreds of rarely visited islands of Raja Ampat whose waters harbour over 75% of the world's coral and fish species. At Cenderawasih Bay, swim with the gentle whale sharks - the largest living non-mammalian vertebrate - in what guests describe as a 'once in a lifetime experience.' Walk through vibrant village markets. Experience a traditional welcome at Banda Neira where our ship is serenaded by kora kora canoes. Enjoy the view over sunset drinks at 17th century Dutch Fort Belgica. Climb atop Mount Pindito to marvel at one of the world's most photographed marine scenes: the jagged green limestone cliffs and crystal clear water of Wayag.

Adventure Made Easy - Includes hosted 5 hour charter flight departing Darwin to Sorong / Sorong to Darwin, via Manado. Medical professionals onboard and links to Visa and Health information.



### ITINERARY

#### DAY 1: DEPART DARWIN / SORONG

Embark Darwin: Board at Darwin's Fort Hill Wharf at 6:30am for 8:00am departure. Spend the afternoon becoming acquainted with all the facilities onboard as we cruise northwards towards the Spice Islands. Embark Sorong: An optional charter flight is available from Darwin (at an additional indicative cost of \$1200pp). Check in at 6:00am for a 8:00am departure accompanied by our Expedition Team. On arrival in Sorong, enjoy lunch at a local hotel before enjoying a local tour of Sorong prior to embarking Coral Geographer at 4:00pm for a 5:00pm departure. As dusk falls, join your fellow travellers at the Captain's Welcome this afternoon, while your Expedition Team shares the extraordinary things you will encounter on your voyage.

#### CROSSING THE TIMOR SEA | YAMDENA ISLAND, INDONESIA

Spend a relaxing day at sea as we cross the Timor Sea towards Yamdena Island. Join our Expedition Team in the Bridge Deck for an insightful information session on Raja Ampat and the Spice Islands as well as safety procedures and protocols while visiting Indonesia. After dinner, a movie or documentary will be featured.

Wild Earth Travel

*Small Ships, Big Adventures*

**0800 945 3327** (within New Zealand) | +64 (0) 3 365 1355 | **1800 107 715** (within Australia)

info@wildearth-travel.com | **wildearth-travel.com**



# Wild Earth Travel

*Small Ships, Big Adventures*

**wildearth-travel.com**

**info@wildearth-travel.com**

## YAMDENA ISLAND - SPICE ISLANDS, INDONESIA

Sangliat Dol is a peaceful traditional village in the Tanimbar Islands of Maluku, the centre of the ancient "boat" culture of Maluku. Here boats were built to symbolize the arrival from sea of the original inhabitants of Maluku. Sangliat Dol village is one of few villages where the giant stone boat and the culture associated with it remains intact today.

This afternoon after lunch onboard we will take a coach ride from the port of Saumlaki towards Sangliat Dol, passing verdant fields and plantations. (Please note the bus ride does not have air conditioning.) We will be greeted by Village Elders and be taken into the heart of the village where the megalithic structure is located. Here the village structure still follows the organization of the original inhabitants. The village head is seen as the Captain or Master "steering" the direction of the village. Many other positions of the village basically translate as "helmsman", "harpooner", "bailer boy" and other boat related titles.

## SEA DAY

Spend a day relaxing at sea listening to our guest lecturers engaging presentation's and enjoy our onboard facilities.

## BANDA NEIRA - SPICE ISLANDS

The Banda archipelago is the historic heart of the spice trade and was once the world's only source of nutmeg until the mid-19th century as Portuguese, Dutch and English fought for control over the spice trade. The ten volcanic islands have attracted traders and merchants for at least 2,000 years as highly sought-after goods such as cloves, textiles, batik and rice were moved through Banda.

The Banda Islands are lushly vegetated with tropical flora including the Myristica Tree (nutmeg) while the Banda Sea's underwater lava flow reefs are popular for scuba diving and snorkelling. On our approach to Banda Neira, witness the outline of Gunung Api volcano. Admire the photo-worthy spectacle of Moluku paddlers propelling kora kora canoes with their elaborately carved figureheads. Snorkel and dive over the nearby lava flow reef system or explore ashore and enjoy local tea and snacks on the waterfront.

Later in the afternoon, there is time to explore Fort Belgica, built by the first

Governor-General of the Dutch East Indies (now Indonesia) in 1611. The pentagonal shaped fort is extremely well preserved and provides an interesting insight into Dutch colonization. Join the locals for a traditional dance and music performance before enjoying a glass of sparkling wine as the sun sets over the fort.

## BANDA NEIRA - SPICE ISLANDS, INDONESIA

This morning, choose to explore the streets of Banda Neira on a guided tour, spotting colourful local houses before visiting a local nutmeg plantation to gain a fascinating insight into the spice that started it all.

## HATTA ISLAND - SPICE ISLANDS, INDONESIA

Famous for exceptional snorkelling and diving just 5m from the beach, snorkel amongst vibrant coral gardens and abundant fish species. There is an opportunity for a guided walk through the village, to meet school children, and to explore a nutmeg (*Myristica*) and pepper plantation.

## MOLANA ISLAND & SAPARUA ISLAND - SPICE ISLANDS, INDONESIA

We start the day arriving early at Molana Island whose history stretches back to the Portuguese colonial era. This uninhabited private island is home to 85 species of trees, Pacific Monitor Lizards (*Varanus Indicus*), Moluccan Scrubfowl (*Megapodius Reinwardtii*) and Coconut Crabs. The island still contains the ruins of a hospital built by the Dutch, whose construction was interrupted by the Japanese occupation in World War II.

Snorkellers can take advantage of the shallow corals and clear water with easy viewing of unique corals and plentiful fishes. We head East to nearby Saparua Island where we are welcomed by village locals. The area holds an important spot in history books which we learn at Fort Duurstede, a 17th- century Dutch fort with a complicated backstory that spans centuries. Here men and boys give us their war dance with shields, swords, and cultural adornment. This is a location of cultural immersion and learning.

## SERAM ISLAND - SPICE ISLANDS, INDONESIA

Wild Earth Travel

*Small Ships, Big Adventures*

**0800 945 3327** (within New Zealand) | +64 (0) 3 365 1355 | **1800 107 715** (within Australia)

info@wildearth-travel.com | **wildearth-travel.com**





# Wild Earth Travel

*Small Ships, Big Adventures*

**wildearth-travel.com**

**info@wildearth-travel.com**

In the middle of the Banda Sea, Sawai village is on Seram Island and is one of the oldest villages in the Maluku Islands. The village is in a beautiful setting with simple homes built on stilts over the ocean. We will spend the day immersed in the crystal-clear waters and snorkelling over reefs. This is our final stop in the Spice Islands as we make our way to the natural playground of Raja Ampat.

## MISOOL, RAJA AMPAT, INDONESIA

Our introduction to the beautiful natural playground of Raja Ampat is at Misool, one of the four largest islands. Raja Ampat means 'Four Kings' which refers to four main islands: Waigeo, Batanta, Salawati, and Misool, in an archipelago comprising over 1,500 smaller islands. There is time to swim and kayak (weather permitting) amongst the conical islands of Misool. We visit another similarly spectacular waterway at Yapap, considered one of the best natural pools in the world. This vast primordial pool is dotted with dramatic limestone formations which look more like chess pieces than rocks. We also visit heart-shaped Dafalen Love Lake which can be viewed from up high with a climb to the summit of nearby cliffs. Swimming and diving in these pristine waters is an undisputed highlight of our Raja Ampat adventures.

## KOFIAU ISLAND - RAJA AMPAT, INDONESIA

At Kofiau Island we are welcomed by village dancers from their traditional boats before leading us ashore at Deer Village (also known as Kampung Deer). Local guides show us through their village before we board a local longboat which takes us to another village, Kampung Awat. Here we enjoy a traditional Sasi Opening Ceremony and a barbeque on the beach. Sasi is a traditional ceremony to preserve the ecosystem and effectively limits the catch of particular marine species during a designated period. After lunch, we snorkel and swim in the ocean.

## GAM ISLAND, RAJA AMPAT, INDONESIA

Gam Island, a highlight of Raja Ampat, offers a blend of natural beauty, rich history, and engaging activities. With its rugged limestone hills and lush jungle, the island's interior is challenging to explore, but its southern coast boasts charming villages, serene beaches, and exceptional snorkelling opportunities. Guests can enjoy a scenic walk along a concrete path connecting Sawinggrai

and Kapisawar, where vibrant village life and snorkelling await. Wildlife enthusiasts will be delighted by the opportunity to sight red birds-of-paradise, western crowned pigeons, and other unique species. Historic highlights include Alfred Wallace's recreated 1860 campsite near Yenbeser and ancient hand stencils on nearby Pef Island. Kabui Bay's stunning seascapes and Gam's rich cultural and natural offerings promise unforgettable experiences, from water activities to birdwatching and village visits.

## WAYAG - RAJA AMPAT, INDONESIA

More Raja Ampat treasures await today as we explore the magnificent waterways and lagoons by Xplorer with time to swim in crystal clear waters and walk upon white-sand beaches amongst the many islands. After lunch, there is an opportunity for an energetic hike up to famed Pindito Peak, with hikers rewarded by panoramic views over the island and its spectacular lagoon. Alternatively, you can choose to relax by swimming, snorkelling or kayaking.

## AMSTERDAM ISLAND, INDONESIA

Part of the Su Islands (Mios Su) group, a cluster of small islands off the northern coast of West Papua, today we visit the little-known Amsterdam Island. Enjoy the opportunity to explore with local guides and a cultural welcome performance. There is also opportunity to enjoy beachcombing and swimming.

## CENDERAWASIH BAY & KWATISORE VILLAGE, INDONESIA

Cenderawasih Bay (translates to Bird of Paradise Bay), hosts an incredible array of marine biodiversity. The largest marine park in Indonesia, Teluk Cenderawasih National Park protects a rich marine ecosystem, and covers an area of more than 14,500 square kilometres and is home to whale sharks, dugongs, dolphins as well as over 200 known species of fish and 150 species of coral. Cenderawasih Bay is one of the few places worldwide where it's possible to swim with the endangered Whale Shark.

There is no guarantee that whale sharks will materialise on cue - if they do, we may have the chance to snorkel amongst them. Eyeballing these enormous fish, which are completely harmless and can grow to the length of a bus, is an experience you won't forget! Later, we will visit Kwatisore village with local guides and learn about West Papuan customs, cultures and the traditional

**Wild Earth Travel**

*Small Ships, Big Adventures*

**0800 945 3327** (within New Zealand) | +64 (0) 3 365 1355 | **1800 107 715** (within Australia)

info@wildearth-travel.com | **wildearth-travel.com**



# Wild Earth Travel

*Small Ships, Big Adventures*

**wildearth-travel.com**

**info@wildearth-travel.com**

lifestyles of the people.

## ROON ISLAND, INDONESIA

One of the highlights of Roon Island is the wreckage of a Japanese Zero fighter plane lying in shallow water and is visible to snorkellers when the weather co-operates. The wreck has become a marine habitat and sports large corals, gorgonian fans as well as large populations of lionfish, surgeonfish, and turtles amongst other marine life.

## SWANDE ISLAND, INDONESIA

An expeditionary stop for Coral Expeditions, Swande is an island of the Yapen Islands group, in north-eastern Indonesia. Here we will have more time to swim, snorkel and a dive.

## MANOKWARI, INDONESIA

Manokwari, the capital of West Papua, is located right on the bird's head on the island of Papua, surrounded by lush rolling hills and nearby to the Arfak Mountains. There are over twenty-four different tribal groups living in Manokwari, each with its own unique language and culture.

Today, guests can choose from three expeditions:

Those with a keen interest in birding and wildlife (with good fitness and excellent mobility) may choose to travel into the Arfak Mountains to the Pegunungan Arfak Nature Reserve and enjoy the rare opportunity of exploring the higher elevations and misty tropical rainforests. Here we hope to see many endemic plants, animals and birds including cuscus possum, lesser birds of paradise, common paradise kingfisher, magnificent riflebird as well as king bird of paradise among the region's 320 bird species.

Alternatively, you can choose to join a guided city tour of Manokwari and free time to explore this coastal town.

This afternoon, visit Mansinam island - where guests can learn of the history and significance of the island and participate in snorkelling and diving World War II wrecks.

## Day 19: ARRIVE IN SORONG / DARWIN

Disembark Sorong: After an early morning arrival into Sorong at 8:00am, disembark the ship and if you are booked on to the Charter flight, take lunch in a local restaurant before you flight to Darwin via Manado.

Disembark Darwin: Our Raja Ampat & Spice Islands adventure concludes in Darwin this morning as we bid farewell to new-found friends, the Master and crew, disembarking at 8:00am. A complimentary transfer is provided to CBD hotels or the airport.

### Please note:

This itinerary is an indication of the destinations we visit and activities on offer. Throughout the expedition we may make changes to the itinerary as necessary to maximise your expeditionary experience. Allowances may be made for seasonal variations, weather, tidal conditions, and any other event that may affect the operation of the vessel. Coral Expeditions suggests that you do not arrive on the day of embarkation or depart on the day of disembarkation due to any changes that may occur in scheduling.

**Wild Earth Travel**

*Small Ships, Big Adventures*

**0800 945 3327** (within New Zealand) | +64 (0) 3 365 1355 | **1800 107 715** (within Australia)

info@wildearth-travel.com | wildearth-travel.com



# Wild Earth Travel

*Small Ships, Big Adventures*

**wildearth-travel.com**

**info@wildearth-travel.com**

## YOUR SHIP: CORAL ADVENTURER

<b>YOUR SHIP:</b>	<b>Coral Adventurer</b>
<b>VESSEL TYPE:</b>	<b>Expedition Ship</b>
<b>LENGTH:</b>	<b>93.4 meters</b>
<b>PASSENGER CAPACITY:</b>	<b>120 (60 staterooms)</b>
<b>BUILT/REFURBISHED:</b>	<b>2019</b>

Designed and built to be the most modern tropical expedition ship afloat, Coral Adventurer debuted in April 2019. She features comfortable Australian interiors, Xplorer tender mechanism, intimate guest experience, and personalized service.

### EXPEDITION CAPABILITIES

- > Two trademark Xplorer tenders seat all passengers for shore excursions
- > Six zodiacs for more intrepid exploration
- > Lecture lounge with multimedia for daily expedition briefings and presentations
- > Small on-board Library
- > Shallow draft and advanced navigation and propulsion systems

### MARINE IMMERSION

- > Navigator lounge in the bridge giving a vantage point of ship operations
- > Over 1000 sq m of open deck space including a wrap-around promenade deck with panoramic views
- > Engine room tours and high level of crew interaction with guests

- > Barralong Room for hosting scientific research or exhibitions

### FOOD AND WINE FEATURES

- > Communal 'wine table'
- > Galley viewing window
- > Multiple indoor and outdoor bars, including our Explorer bar on the Vista Deck
- > Curated wine cellar featuring boutique wines and exceptional vintage Australian reds.

### GUEST COMFORT

- > All outside-facing guest cabins with en-suite bathrooms; majority have private balcony
- > Active stabilisers
- > Gym
- > Passenger elevator
- > Wi-Fi available in all guest areas



guest areas

Wild Earth Travel

*Small Ships, Big Adventures*

**0800 945 3327** (within New Zealand) | +64 (0) 3 365 1355 | **1800 107 715** (within Australia)

info@wildearth-travel.com | wildearth-travel.com

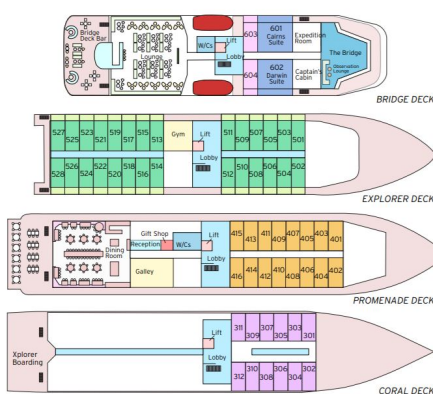
# Wild Earth Travel

*Small Ships, Big Adventures*

[wildearth-travel.com](http://wildearth-travel.com)

[info@wildearth-travel.com](mailto:info@wildearth-travel.com)

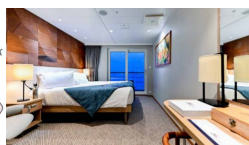
## INSIDE YOUR SHIP



**Name** Coral Adventurer  
**Owners** CPC Marine Pty Ltd  
**Flag** Australian  
**Year of Build** 2019  
**LOA** 93.4 metres  
**Beam** 17.2 metres  
**Draught** 4.5 metres  
**Gross Tonnage** 5599 tonnes  
**Construction** VARD  
**Main Engines** Caterpillar 3512C  
**Azimuth Pod** Rolls Royce Azipull  
**Cruising Speed** 13.8 knots  
**Max. passengers** 120  
**Max. crew** 48  
**Tenders** 2 Xplorers, 6 Zodiacs

BRIDGE DECK BALCONY SUITE  
 • 55.8sqm • Private Balcony • Twin or junior king beds  
 BRIDGE DECK BALCONY STATEROOM  
 • 21.4sqm • Private Balcony • Twin or junior king beds  
 EXPLORER DECK BALCONY STATEROOM  
 • 21.4sqm • Private Balcony • Twin or junior king beds  
 PROMENADE DECK STATEROOM  
 • 17sqm • Picture windows • Twin or junior king beds  
 CORAL DECK STATEROOM  
 • 17sqm • Picture windows • Twin or junior king beds

### BRIDGE DECK BALCONY STATEROOM



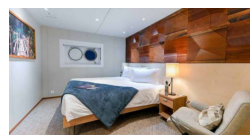
### BRIDGE DECK BALCONY SUITE



### Bridge Deck Balcony Suite



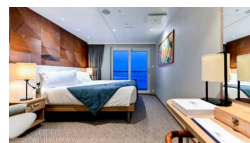
### CORAL DECK STATEROOM



### Coral Deck Stateroom



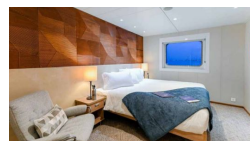
### EXPLORER DECK BALCONY STATEROOM



### Explorer Deck Balcony Stateroom



### PROMENADE DECK STATEROOM



Wild Earth Travel

*Small Ships, Big Adventures*

0800 945 3327 (within New Zealand) | +64 (0) 3 365 1355 | 1800 107 715 (within Australia)

[info@wildearth-travel.com](mailto:info@wildearth-travel.com) | [wildearth-travel.com](http://wildearth-travel.com)



# Wild Earth Travel

*Small Ships, Big Adventures*

**wildearth-travel.com**

**info@wildearth-travel.com**

## PRICING

### 06-Sep-2025 to 24-Sep-2025

Coral Deck Stateroom	19390 AUD pp
Promenade Deck Stateroom	22920 AUD pp
Explorer Deck Balcony Stateroom	29920 AUD pp
Bridge Deck Balcony Suite	39620 AUD pp

### 10-Feb-2026 to 28-Feb-2026

Coral Deck Stateroom	19390 AUD pp
Promenade Deck Stateroom	22920 AUD pp
Explorer Deck Balcony Stateroom	29920 AUD pp
Bridge Deck Balcony Suite	39620 AUD pp

### 28-Feb-2026 to 18-Mar-2026

Coral Deck Stateroom	19390 AUD pp
Promenade Deck Stateroom	22920 AUD pp
Explorer Deck Balcony Stateroom	29920 AUD pp
Bridge Deck Balcony Suite	39620 AUD pp

### 07-Mar-2026 to 25-Mar-2026

CORAL DECK STATEROOM	19950 AUD pp
PROMENADE DECK STATEROOM	23550 AUD pp
EXPLORER DECK BALCONY STATEROOM	30750 AUD pp
BRIDGE DECK BALCONY STATEROOM	33350 AUD pp
BRIDGE DECK BALCONY SUITE	40650 AUD pp

**Wild Earth Travel**  
*Small Ships, Big Adventures*

**0800 945 3327** (within New Zealand) | +64 (0) 3 365 1355 | **1800 107 715** (within Australia)

info@wildearth-travel.com | wildearth-travel.com