



## SOLAR ECLIPSE EXPEDITION 2026 – GREENLAND, ICELAND AND SVALBARD

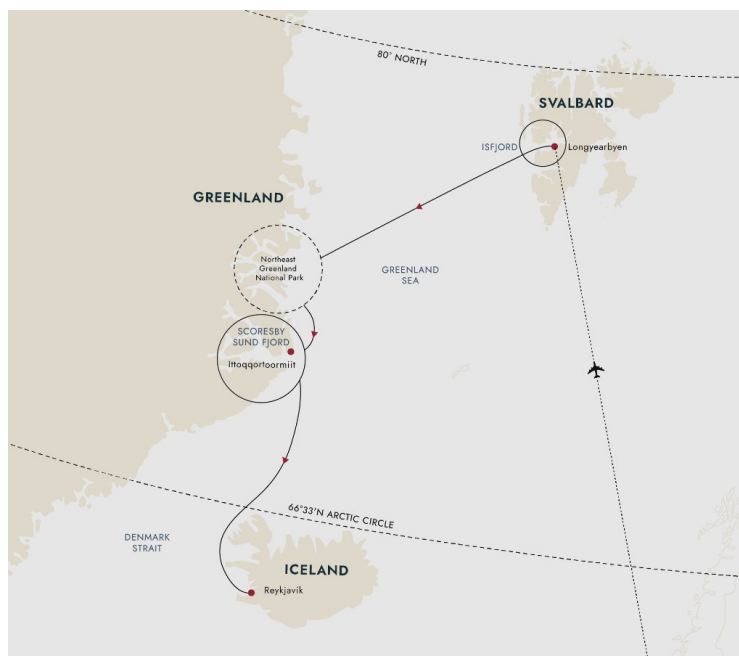
### An Arctic voyage of discovery

Setting sail from Svalbard, we head to the world's largest national park. Situated in East Greenland, this huge natural reserve of 375,000 square miles occupies the remote northeastern quarter of Greenland. In the absence of people wildlife abounds here, and we may see iconic Arctic species like musk oxen and even polar bears. The beauty and the silence here is breathtaking, and you'll be one of only a few people lucky enough to visit this wilderness region.

### Witness the 2026 solar eclipse in Greenland

After this we head south to Scoresby Sound where we'll witness the amazing spectacle of a total solar eclipse. Scoresby Sund is an immense system of fjords and glaciers fanning out over 24,000 square miles. Expect majestic fjord landscapes, historical ruins, abundant Arctic wildlife, and a potential visit to one of the most remote communities in the world.

Afterwards, we sail across the Denmark Strait to Iceland, and our solar eclipse voyage of discovery ends in charming and artsy Reykjavik.



### ITINERARY

#### Day 1 Arrive in Longyearbyen

Get ready for your Arctic solar eclipse voyage

After a flight from Oslo, your adventure begins with two overnights in the world's northernmost town, Longyearbyen.

A colourful frontier settlement where people are outnumbered by snowmobiles, Longyearbyen is a unique place on the edge of the Arctic wilderness. If you have time, head out to get a first look at this special town before enjoying a relaxing evening at your leisure.



# Wild Earth Travel

*Small Ships, Big Adventures*

**wildearth-travel.com**

**info@wildearth-travel.com**

## Day 2 Longyearbyen adventures

Explore the town at the top of the world

After breakfast it's time to experience Longyearbyen, a town that's perfect for exploring on foot. Stroll down the main street and you might see Svalbard reindeer saunter by. Although wild, they're curious and tame.

Get out on the water with an included nature tour aboard the hybrid electric catamaran, MS Bard. The engine and propellers are designed to be as quiet as possible, meaning we won't disturb the nature and wildlife by our presence.

The evening is yours to spend at your leisure - enjoy your last night on land before we head off on our solar eclipse voyage tomorrow.

## Day 3 Your solar eclipse adventure begins

A last look at Longyearbyen

Today's the day when our solar eclipse adventure begins.

Before boarding the expedition ship in the afternoon, join an included excursion and get another look at this amazing polar bear-inspired region at the top of the world.

## Day 4-5 Relaxing at sea

Getting ready for Greenland - Kalaallit Nunaat

As we sail into the Greenland Sea on our way to the world's largest island, it's time to relax, find your sea legs and get acquainted with the onboard facilities.

The Expedition Team will give talks about your upcoming adventure and will explain the protocols of respectfully visiting wildlife habitats and Indigenous Arctic communities. In the lecture hall, you'll find out what to expect in the epic landscapes of East Greenland National Park and the stunning fjords of Scoresby Sund. There will also be talks on astronomy and the upcoming solar

eclipse over Greenland, which will occur a week into our adventure.

If you're feeling active, head to the gym and do a workout with a view. On the other hand, you could sample the sauna, laze in a hot tub, indulge yourself at the onboard eateries or just find a quiet corner to read a book with a hot drink. Love science? Then why not join one of our onboard Citizen Science projects, a fun and engaging way to contribute to global research.

## Days 6-15 Northeast Greenland National Park and Scoresby Sund expedition days

Explore the wild east and witness the solar eclipse

We'll spend the next 10 days exploring Greenland's remote and pristine east coast. Extending for over 1,740 miles from north to south, this long stretch of coast is cold, isolated, and remote even by Greenlandic standards. The south-flowing East Greenland Current brings lots of sea ice directly from the Arctic Ocean, challenging human settlement but creating a heaven for ice-dependant wildlife, including the polar bear.

Local weather and ice conditions will dictate our exact route, but our plan is to sail first to the Northeast Greenland National Park - the world's largest national park. Visiting this fragile Arctic wilderness is a rare privilege as only a few visitors are permitted here each year.

Apart from old trapper huts, some science research stations, and a military outpost, there are very few traces of human life in this 375,000 square mile park. Be assured that this is one of the quietest places on Earth, and you'll enjoy a feeling of great peace as we explore this beautiful wilderness.

We'll then sail south to Scoresby Sund, the world's largest fjord system. It's during our time in Scoresby Sund that the 2026 solar eclipse will occur. We'll aim to be in the perfect position to witness it within the fjord system, and you'll be able to see the surrounding landscape and sea fall into and then re-emerge from darkness. We won't know our exact positioning until the day, as weather and ice conditions will play a part, but the Captain will ensure we sail to the best possible location to experience this amazing celestial event, which will occur at 16:35.

During our time in Scoresby Sound, you'll feel a deep sense of serenity in this wild and rugged region, with white and blue icebergs floating in mirror-like waters surrounded by looming mountains. If conditions permit, we'll visit

Wild Earth Travel  
*Small Ships, Big Adventures*

**0800 945 3327** (within New Zealand) | +64 (0) 3 365 1355 | **1800 107 715** (within Australia)

info@wildearth-travel.com | **wildearth-travel.com**



Ittoqqortoormiit - the most remote inhabited community in the Western Hemisphere.

Itineraries are subject to change.

As this is an expedition cruise, the Captain and Expedition Team will guide us to the most favourable spots on a daily basis. Our goal will be to pack in as many shore landings, small boat cruises, nature walks, kayaking adventures and wildlife sightings as possible.

### Day 16 Denmark Strait

Relax and reflect as we head to Iceland

After exploring the remote beauty of Greenland, we set our course for Iceland. Spend the days at sea recapping your experiences with new friends, studying nature in the Science Centre, listening to a lecture or two, or just relaxing on deck. Look out for the seabirds that follow our ship and keep an eye out for whales.

As you reflect on your cruise, from witnessing a total solar eclipse and soaking up the soul-stirring Arctic scenery, take some time to relax at sea and enjoy the ship's food and facilities.

### Day 17 Reykjavík

End your expedition in Iceland's capital

We say a fond farewell to MS Spitsbergen as we end our expedition cruise in the lovely city of Reykjavik. With its interesting museums, stylish galleries, restaurants and geothermal pools, there's so much to enjoy in Iceland's capital.

And if you want to discover more of Iceland, you can join our optional Post-Programme before you head home. Or simply extend your stay to enjoy more of Reykjavik and its surrounding geothermal attractions. It's a great place to end an epic journey!

Please note:





## YOUR SHIP: SPITSBERGEN

<b>YOUR SHIP:</b>	<b>Spitsbergen</b>
<b>VESSEL TYPE:</b>	<b>Expedition</b>
<b>LENGTH:</b>	<b>100 metres</b>
<b>PASSENGER CAPACITY:</b>	<b>335</b>
<b>BUILT/REFURBISHED:</b>	<b>2009 / 2016</b>

MS Spitsbergen is named after the crown jewel of Arctic Norway - the Svalbard archipelago and its biggest island, Spitsbergen. After complete reconstruction, MS Spitsbergen joined the Hurtigruten fleet in 2016. The ship features high technical standards as well as comfortable, modern public areas and cabins. The vessel's fresh Scandinavian design reflects a colour palette derived from the sea. She is modern and environmentally progressive, and we plan further improvements that will reduce emissions and fuel consumption even more. The new ship's maneuverability and optimal size make her quite suitable for exploring polar waters.

### Expedition team on board

MS Spitsbergen has its own on-board Expedition Team and serves as a university at sea. Interesting lectures inside the ship as well as out on the sun deck make this an exciting and educational journey. Topics depend on the season and the waters we sail in. The Expedition Team host a lecture programme and evening gatherings daily. Out on deck you can participate in live points of interest to learn more about the nature, culture and other phenomena we encounter along the coast. In addition, the Expedition Team will introduce you to the

uniquely Norwegian notion of `friluftsliv` (outdoor life), and encourage you take part in `friluftsliv` hikes and activities during the journey.

Our dedicated Expedition Teams have one mission: to enhance your experience by engaging you and interpreting the nature, wildlife, and culture you encounter during the voyage. Read more about our Expedition Teams here.

### Ship facilities

Expedition Team - Explorer bar - Panoramic lounge - Explorer lounge - Compass Service Centre - Brygga bistro - Shop - Torget main dining - Wi-Fi - Sauna - Fitness room - Lift - Hot tub - Guest launderette - Panoramic deck 8 - Outside bar for events, decks 7 & 8



decks 7 & 8

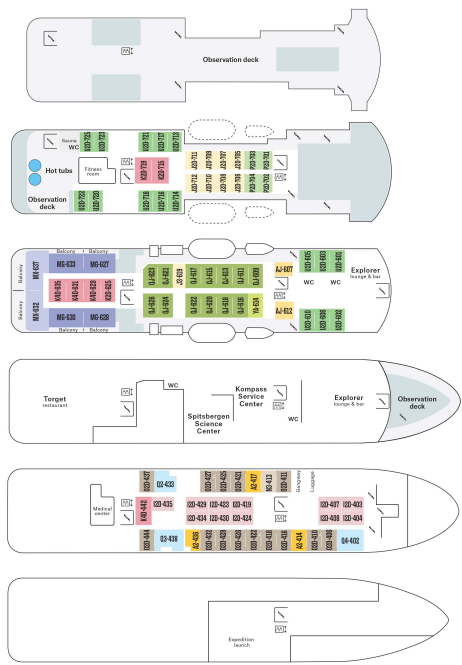


**Wild Earth Travel**  
*Small Ships, Big Adventures*

**wildearth-travel.com**

**info@wildearth-travel.com**

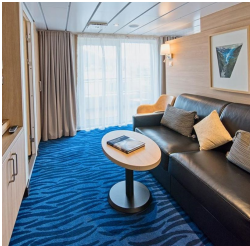
**INSIDE YOUR SHIP**



**Arctic Superior. From**



**Expedition Suite. From**



**Polar Inside. From**



**Polar Outside. From**





# Wild Earth Travel

*Small Ships, Big Adventures*

**wildearth-travel.com**

**info@wildearth-travel.com**

## PRICING

03-Aug-2026 to 19-Aug-2026

Polar Inside. From	22981 AUD pp
Polar Outside. From	26449 AUD pp
Arctic Superior. From	28119 AUD pp
Expedition Suite. From	72701 AUD pp