

# Wild Earth Travel

*Small Ships, Big Adventures*

**wildearth-travel.com**

**info@wildearth-travel.com**

## RAJA AMPAT AND THE SPICE ISLANDS - FROM DARWIN TO DARWIN IN LUXURY

As the gentle trade winds caress the turquoise ocean, a light breeze skims over the luxuriant vegetation, and Western Melanesia's lush green islands appear before you in a constellation. During a unique 12-day expedition cruise, PONANT invites you to board Le Soleal to discover the jewels of the Banda, Seram and Sorong seas, with their tropical forests, magnificent seabed and ancestral heritage.

Departing from Darwin, a multicultural city where over 50 ethnic groups live together in perfect harmony with their environment, you head for the Maluku Islands, nicknamed the "Spice Islands". These hidden jewels, surrounded by incredibly blue water, are home to some of Indonesia's most beautiful white sandy beaches.

Then you set sail further north. At the junction of the Pacific and Indian Oceans, and the meeting point of the Seram and Sorong Seas, a string of green and leafy islands called Raja Ampat inspires wonder, a sense of peace and enchantment. Preserved in a setting of majestic karst peaks and bordered by magical coral reefs, the archipelago captivates visitors with the beauty of its multicoloured lagoons, immaculate beaches, lush green landscapes and exceptionally biodiverse seabed.

Le Soleal will continue to sail in the Indonesian province of West Papua to allow you to admire the superb natural site of Kitikiti Waterfall where you could enjoy a swim or snorkel surrounded by lush nature, both on land and under water.

You then set out for the Maluku archipelago to discover the charms of Banda Neira Island. Between its age-old culture marked by Dutch and Portuguese influences, its ruins from ancient times, coral reefs and luxuriant jungle, you will experience a truly timeless moment...

You then return to Darwin, which rounds off this fabulous and enchanting epic.



ning epic.

### ITINERARY

Wild Earth Travel

*Small Ships, Big Adventures*

**0800 945 3327** (within New Zealand) | +64 (0) 3 365 1355 | **1800 107 715** (within Australia)

info@wildearth-travel.com | **wildearth-travel.com**



# Wild Earth Travel

*Small Ships, Big Adventures*

**wildearth-travel.com**

**info@wildearth-travel.com**

## Day 1 DARWIN

Darwin is located in Australia's Northern Territory which is also known as the "Top End". It is the capital city and the most populated town of the Northern Territory. Darwin is a beautiful tropical city, a melting pot of people and cultures, over 50 different cultures live and work side by side that prides itself in its unique and friendly laid-back lifestyle. Come discover the town's still recent history through its emblematic buildings such as the new Parliament House opened in 1994, a magnificent example of tropical architecture or Admiralty House declared heritage place, a tropical-style home elevated on stilts that has survived two cyclones and numerous air raids.

## Day 2 AT SEA

During your journey at sea, make the most of the many services and activities on board. Treat yourself to a moment of relaxation in the spa or stay in shape in the fitness centre. Depending on the season, let yourself be tempted by the swimming pool or a spot of sunbathing. This journey without a port of call will also be an opportunity to enjoy the conferences or shows proposed on board, depending on the activities offered, or to do some shopping in the boutique or to meet the PONANT photographers in their dedicated space. As for lovers of the open sea, they will be able to visit the ship's upper deck to admire the spectacle of the waves and perhaps be lucky enough to observe marine species. A truly enchanted interlude, combining comfort, rest and entertainment.

## Day 3 KEI ISLANDS, MALUKU ISLANDS

The Kei Islands are blessed with kilometres of stunning, yet almost entirely empty, white-sand beaches and a deeply hospitable population. Beneath the mostly Christian facade, Kei culture is fascinatingly distinctive. Local history holds that ancestors of contemporary Kei islanders came from Bali, part of the expanding Hindu Majapahit kingdom from the western archipelago. Enjoy a day of swimming and snorkelling on an idyllic uninhabited picture postcard

tropical island.

## Day 4 AT SEA

During your journey at sea, make the most of the many services and activities on board. Treat yourself to a moment of relaxation in the spa or stay in shape in the fitness centre. Depending on the season, let yourself be tempted by the swimming pool or a spot of sunbathing. This journey without a port of call will also be an opportunity to enjoy the conferences or shows proposed on board, depending on the activities offered, or to do some shopping in the boutique or to meet the PONANT photographers in their dedicated space. As for lovers of the open sea, they will be able to visit the ship's upper deck to admire the spectacle of the waves and perhaps be lucky enough to observe marine species. A truly enchanted interlude, combining comfort, rest and entertainment.

## Days 5 - 8 RAJA AMPAT ISLANDS, WEST PAPUA

If you are travelling the world in search for the most beautiful diving spots, you'll find what you're looking for in the Indonesian Raja Ampat islands. Off Sorong, ideally located in the heart of the illustrious "Coral Triangle", the 1,500 or so islets that make up the archipelago are the ideal place for admiring some outstandingly diverse coral reefs. At the junction of the Pacific and Indian oceans, the Raja Ampat islands, covered with lush jungle, are also extraordinary lands for hiking. Between multi-coloured lagoons, immaculate beaches and green landscapes, the Raja Ampat islands offer you a breath-taking palette of colours...

## Day 9 KITIKITI WATERFALL, MOMMON

North of Triton Bay, in the Indonesian province of West Papua, lie the Bomberai Peninsula and Sebakor Bay. A real paradise for divers, this protected, authentic and very wild area boasts an exceptional biodiversity. Here, you will be able to admire the superb Kitikiti Waterfall where you could

**Wild Earth Travel**

*Small Ships, Big Adventures*

**0800 945 3327** (within New Zealand) | +64 (0) 3 365 1355 | **1800 107 715** (within Australia)

info@wildearth-travel.com | **wildearth-travel.com**



# Wild Earth Travel

*Small Ships, Big Adventures*

**wildearth-travel.com**

**info@wildearth-travel.com**

enjoy a swim or snorkel surrounded by lush nature, both on land and under water.

## Day 10 BANDA NEIRA, MALUKU ISLANDS

From age-old traditional cultures and ancient vestiges, to coral reefs and lush green jungle... The attractions of the remote Banda archipelago seem endless. Better known as the legendary "Spice Islands" of the Ancient World, these small volcanic landmasses were the fabled prize of colonial powers for more than four centuries. Every colonial power of significance fought for control of these ten small islands that today have become largely forgotten. Walking the streets of Banda Neira is a surreal experience as your eyes are drawn to the eclectic mix of Portuguese, Dutch and British architecture, the remnants of a rich and tumultuous history. It is without doubt the most historically significant and interesting of all the "Spice Islands".

## Day 11 AT SEA

During your journey at sea, make the most of the many services and activities on board. Treat yourself to a moment of relaxation in the spa or stay in shape in the fitness centre. Depending on the season, let yourself be tempted by the swimming pool or a spot of sunbathing. This journey without a port of call will also be an opportunity to enjoy the conferences or shows proposed on board, depending on the activities offered, or to do some shopping in the boutique or to meet the PONANT photographers in their dedicated space. As for lovers of the open sea, they will be able to visit the ship's upper deck to admire the spectacle of the waves and perhaps be lucky enough to observe marine species. A truly enchanted interlude, combining comfort, rest and entertainment.

## Day 12 DARWIN

Darwin is located in Australia's Northern Territory which is also known as the "Top End". It is the capital city and the most populated town of the Northern

Territory. Darwin is a beautiful tropical city, a melting pot of people and cultures, over 50 different cultures live and work side by side that prides itself in its unique and friendly laid-back lifestyle. Come discover the town's still recent history through its emblematic buildings such as the new Parliament House opened in 1994, a magnificent example of tropical architecture or Admiralty House declared heritage place, a tropical-style home elevated on stilts that has survived two cyclones and numerous air raids.

Please note:

Itineraries are subject to change.

Wild Earth Travel

*Small Ships, Big Adventures*

**0800 945 3327** (within New Zealand) | +64 (0) 3 365 1355 | **1800 107 715** (within Australia)

info@wildearth-travel.com | **wildearth-travel.com**



# Wild Earth Travel

*Small Ships, Big Adventures*

**wildearth-travel.com**

**info@wildearth-travel.com**

## YOUR SHIP: LE SOLEAL

<b>YOUR SHIP:</b>	<b>Le Soleal</b>
<b>VESSEL TYPE:</b>	<b>Luxury Small Ship</b>
<b>LENGTH:</b>	<b>142 metres</b>
<b>PASSENGER CAPACITY:</b>	<b>264</b>
<b>BUILT/REFURBISHED:</b>	<b>2013</b>



Sailing under the French flag, this magnificent yacht of only 132 staterooms and suites, with balconies, joined in 2013. You will be enchanted by the contemporary decor inspired by the luxury yachting world, with fluid lines and a modern colour scheme combining natural wood with shades of grey and white.

A refined ambience is enhanced by the quality of the workmanship and materials: white Corian counters in the lobby contrast with the warmth of leather to recall a boat's hull, while the central sculpture of enamelled pieces takes its inspiration from the sea. In the loungebar, the carpet picks up a tennis stripe theme symbolising a certain idea of cruising, one synonymous with French elegance and a chic seaside spirit.

Wild Earth Travel

*Small Ships, Big Adventures*

**0800 945 3327** (within New Zealand) | +64 (0) 3 365 1355 | **1800 107 715** (within Australia)

info@wildearth-travel.com | **wildearth-travel.com**

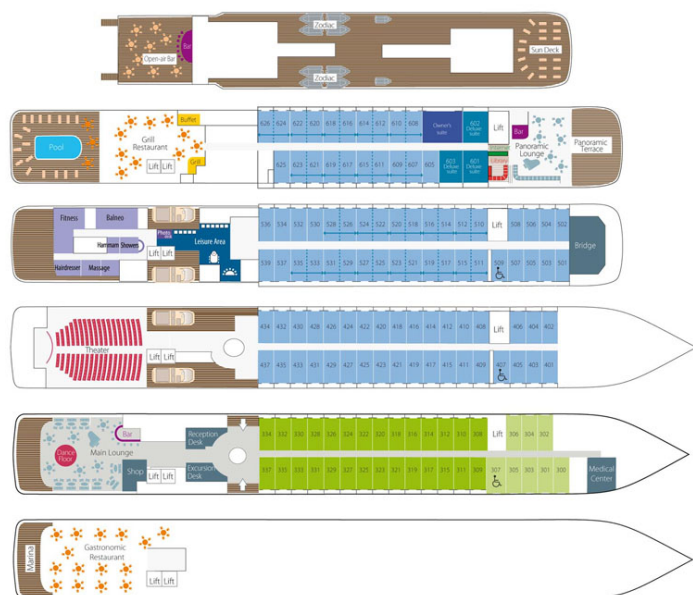
# Wild Earth Travel

*Small Ships, Big Adventures*

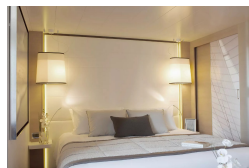
[wildearth-travel.com](http://wildearth-travel.com)

[info@wildearth-travel.com](mailto:info@wildearth-travel.com)

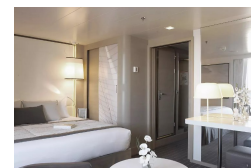
## INSIDE YOUR SHIP



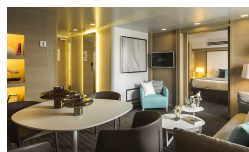
DeLuxe Stateroom



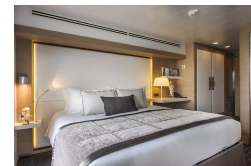
Deluxe Suite



Owner's Suite



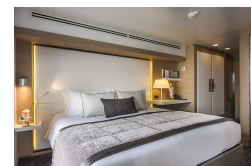
Prestige Stateroom - Deck 4



Prestige Stateroom - Deck 5



Prestige Stateroom - Deck 6



Prestige Suite - Deck 5



Prestige Suite - Deck 6



Wild Earth Travel

*Small Ships, Big Adventures*

0800 945 3327 (within New Zealand) | +64 (0) 3 365 1355 | 1800 107 715 (within Australia)

[info@wildearth-travel.com](mailto:info@wildearth-travel.com) | [wildearth-travel.com](http://wildearth-travel.com)



# Wild Earth Travel

*Small Ships, Big Adventures*

**wildearth-travel.com**

**info@wildearth-travel.com**

## PRICING

**10-Sep-2025 to 21-Sep-2025**

Superior Stateroom	11550 AUD pp
DeLuxe Stateroom	12520 AUD pp
Prestige Stateroom - Deck 4	13900 AUD pp
Prestige Stateroom - Deck 5	14580 AUD pp
Prestige Stateroom - Deck 6	15410 AUD pp
Deluxe Suite	21500 AUD pp
Prestige Suite - Deck 5	29120 AUD pp
Prestige Suite - Deck 6	30640 AUD pp
Owner's Suite	40460 AUD pp

**ADDITIONAL CHARGES:**

Port Taxes 810 AUD pp

Wild Earth Travel

*Small Ships, Big Adventures*

**0800 945 3327** (within New Zealand) | +64 (0) 3 365 1355 | **1800 107 715** (within Australia)

info@wildearth-travel.com | **wildearth-travel.com**





# Wild Earth Travel

*Small Ships, Big Adventures*

**wildearth-travel.com**

**info@wildearth-travel.com**

## SPECIAL OFFERS

Online prices reflect the current brochure fare savings of up to 30%. Prices may change based on demand. Terms and conditions apply. This special offer is subject to availability. Please contact us for more details.

Wild Earth Travel

*Small Ships, Big Adventures*

**0800 945 3327** (within New Zealand) | +64 (0) 3 365 1355 | **1800 107 715** (within Australia)

info@wildearth-travel.com | **wildearth-travel.com**