



Wild Earth Travel

Small Ships, Big Adventures

wildearth-travel.com

info@wildearth-travel.com

THE GEOGRAPHIC NORTH POLE AND THE EAST COAST OF GREENLAND LUXURY EXPEDITION

Push the boundaries of navigation and set sail for 90 degrees North! During this exceptional polar exploration, you will go in search of the mythical Geographic North Pole. Head slowly up through the desert landscapes of the constantly changing ice floe. Your odyssey will continue as you travel down along Greenland, amidst the ice of the Transpolar Drift. Between majestic fjords and encounters with the Inuit culture, the region of Ittoqqortoormiit is rich in rare treasures holding inestimable value. This region near the auroral circle could offer you a choice position in a period that is ideal for observing the Northern Lights. Another Arctic marvel.

As you progress through this polar landscape, Nordaustlandet (North East Land) will display Europe's largest ice cap and some of its most majestic fjords. Aboard Le Commandant Charcot, the only cruise ship able to rise to this challenge, you will make your way towards the North Pole, which is inaccessible to traditional ships. A slow and humble journey awaits you in the heart of a silent world frozen by the extreme cold. You will sail among different states and forms of ice and will be able to admire, from the reassuring cocoon of the ship, the endless show of the light as it reflects on the opalescent landscapes. Following in the wake of Frederick Cook, Robert Edwin Peary or Roald Amundsen, who were among the many to fight to achieve this elusive goal, you will be part of the few chosen ones to dare the adventure, 700 km (435 miles) from any land. And in their footsteps, you will attempt to reach the Holy Grail of all polar explorers: the North Pole!

Sailing back down from the Pole, your odyssey will follow the ice floes along Greenland. You will reach the region of Ittoqqortoormiit, on the East coast. You will discover the village customs during privileged exchanges mixed with joyful and authentic moments. Inuit hospitality is no myth, it is given in the warmth of a look or an exchanged smile. There, if solar activity and the weather conditions are favourable, Le Commandant Charcot will offer you the optimal conditions for observing the Northern Lights, these luminous curtains of colours dancing in the black night.

During the last part of your cruise, Le Commandant Charcot will take you along the Blosseville Coast, named after the French captain who saw it for the first time in 1833. Here, the ice sheet meets the sea.

Amidst these extreme and isolated panoramas, the polar adventure reserves unsuspected emotions for the humble and patient explorer, one who is conscious of their privilege.

Wild Earth Travel
Small Ships, Big Adventures

0800 945 3327 (within New Zealand) | +64 (0) 3 365 1355 | **1800 107 715** (within Australia)

info@wildearth-travel.com | **wildearth-travel.com**



unmissable sites. In a spectacular landscape of snow-topped Alpine mountains, deep fjords, beaches and majestic glaciers, it offers multiple opportunities for wonderment. We will not be surprised to observe whales, walrus, seals, common eiders, terns, polar bears and Arctic foxes there. The site of Gravneset, located in Magdalenafjorden, is home to the remnants of a former whaling station used during the 17th century, as well as the graves of many sailors buried here up until the end of the 18th century. Not far from here, the Gully Glacier offers a magnificent view, a delight for photographers.

Days 4 - 7 Navigating through the sea ice

Enjoy the absolutely unique experience of sailing to the heart of the ice floe, this vast expanse of virgin, immaculate ice. The landscapes are constantly changing, shifting from a smooth, flat wilderness to a chaos of ice, then to channels of open water. Your ship will sail along these naturally open channels and through the areas where the frozen layer is thinnest, offering you the chance to experience magic maritime moments in the midst of drifting sea ice. It will also often be an opportunity to see a particular kind of fauna, totally dependent on the ice floe.

Day 8 Geographic North Pole

Defined by a 90° North latitude, the Geographic North Pole lies on the Earth's rotational axis, at the intersection of all meridians. Plunged into darkness for six months of the year, then lit by the sun for the following six months, this mythical site, permanently covered in ice and remote from any land, has fascinated generations of explorers. So far, only a very few people have ever reached it: an exploit which is now accessible to you aboard Le Commandant Charcot.

Days 9 - 11 Navigating through the sea ice

Enjoy the absolutely unique experience of sailing to the heart of the ice floe, this vast expanse of virgin, immaculate ice. The landscapes are constantly changing, shifting from a smooth, flat wilderness to a chaos of ice, then to channels of open water. Your ship will sail along these naturally open channels and through the areas where the frozen layer is thinnest, offering you the chance to experience magic maritime moments in the midst of drifting sea ice. It will also often be an opportunity to see a particular kind of fauna, totally dependent on the ice floe.

privilege.

ITINERARY

Day 1 Longyearbyen, Spitsbergen

Longyearbyen is the capital of the Norwegian Svalbard archipelago, located on Svalbard's main island, and is the northernmost territorial capital on the planet. With winter temperatures dropping to below 40°C, the landscapes of this mining town are simply breathtaking. The glaciers, the mountains stretching as far as the eye can see and the untouched nature, make you feel like you're in completely unexplored territory.

Day 2 Templefjord, Spitsbergen

Day 3 Magdalenefjorden (Magdalena Bay), Spitsbergen

Nestling in north western Spitsbergen, Magdalena Bay is one of Svalbard's



Wild Earth Travel

Small Ships, Big Adventures

wildearth-travel.com

info@wildearth-travel.com

Day 12 Sailing ice floes along Greenland

The north-east of Greenland is renowned for being home to one of the oldest and thickest layers of ice on the planet. Aboard your ship, you will have the unique opportunity of sailing to the heart of this icy wilderness, many thousands of years old, and will travel along one of the world's most isolated coasts, between drifting ice and blue icebergs.

Days 13 - 14 Exploration of Ittoqqortoormiit Region

On the East coast of Greenland, in the Ittoqqortoormiit region that is covered with snow and ice for nine months of the year, you will have the rare opportunity of immersing yourself in the heart of an isolated territory and exploring the beauty of its infinite polar whiteness. The high alpine mountains punctuate the sky and gradually reveal their dark rock edges beneath a coat of snow. Located at the entrance to the longest system of fjords in the world, sits the village of Ittoqqortoormiit, one of the northernmost inhabited places on the East coast. Its name means 'great house' in Greenlandic and it is home to the last hunters of the polar region, whose ancestral way of life you will encounter. As soon as the thickness of the ice floe allows it, the hunters set out on the trail of walruses, seals, narwhals, musk oxen and polar bears, travelling by traditional dog sleds. On these expanses of immaculate snow, the silence is broken only by the sounds of the dogs, the grating of a sled coming back from a run or of footsteps on the ice. You will discover Inuit traditions through privileged and festive moments on the ice floe and in the village.

Day 15 Exploring the Blosseville Coast

Aboard your ship, follow in the footsteps of Jules Poret de Blosseville, a French explorer and sailor. In 1833, he set off to discover this isolated and unexplored part of eastern Greenland aboard La Lilloise, an adventure with a fatal outcome. The uninhabited territory that bears his name lies to the south of Scoresby Sound. Surrounded by ice, icebergs and pack ice - thin or thick, flat or pronounced - as far as the eye can see, Blosseville Coast is a wild and distant place to which very few people have access. Exploring it means a slow immersion into the heart of a frozen, almost unreal desert, where the variations in light transform one's perception of the landscape. In the kingdom of the polar bears, Le Commandant Charcot, a silent ship open to the exterior, will offer exceptional moments observing Arctic wildlife, through a series of encounters.

Day 16 At sea aboard Le Commandant Charcot

Spend exceptional moments sailing aboard Le Commandant Charcot, the world's first luxury polar exploration vessel and the first PC2-class polar cruise ship capable of sailing into the very heart of the ice, on seas and oceans which the frozen conditions render inaccessible to ordinary ships. Le Commandant Charcot is fitted with oceanographic and scientific equipment selected by a committee of experts. Take advantage of the on-board lectures and opportunities for discussion with these specialists to learn more about the poles. Participate in furthering scientific research with PONANT and let us discover together what these fascinating destinations have yet to reveal to us.

Day 17 Reykjavík

Iceland's capital stretches along the edge of a vast bay in the west of the country. Perlan, the "Pearl of Reykjavik", a museum located on 'Oskjuhlíð hill, offers a panoramic view of the lush, green landscapes. A little further, one can easily spot the signpost showing the way to the evangelical Hallgrímskirkja church, and to the historical centre where one can stroll along the Skólavordustigur and the Laugavegur, two lively streets with charming small shops. For some relaxation just outside of the city, visitors have the opportunity to visit the Reykjanes peninsula and its famous thermal lagoons of the Blue Lagoon.

Please note:

We are privileged guests in these extreme lands where we are at the mercy of weather and ice conditions. Our navigation, mainly in the fjords, will be determined by the type of ice we come across; as the fast ice must be preserved, we will take this into account from day to day in our itineraries. The sailing programme, outings, activities and observation of fauna cannot be guaranteed and are subject to weather and ice conditions. The experiences are unique and vary from day to day and for each departure. The Captain and the Expedition Leader will make every effort to ensure that your experience is as rich as possible, while respecting safety instructions and regulations imposed by the AECO.

Wild Earth Travel
Small Ships, Big Adventures

0800 945 3327 (within New Zealand) | +64 (0) 3 365 1355 | **1800 107 715** (within Australia)

info@wildearth-travel.com | wildearth-travel.com



wildearth-travel.com

info@wildearth-travel.com

YOUR SHIP: LE COMMANDANT-CHARCOT

YOUR SHIP:	Le Commandant-Charcot
VESSEL TYPE:	Polar Luxury Expedition
LENGTH:	149.9 meters
PASSENGER CAPACITY:	135 cabins
BUILT/REFURBISHED:	2018/2019

Be the first aboard Le Commandant-Charcot, the world's luxury polar exploration vessel, and enjoy a unique sailing experience in the Arctic or Antarctic!

With its hybrid propulsion combining liquefied natural gas (LNG) and electric generators, Le Commandant-Charcot has been designed to minimise the environmental impact of travel to the furthest latitudes.

The decoration of the ship, imagined by two internationally renowned design and architecture firms - the studio of Jean-Philippe Nuel and Wilmotte & Associates - is designed to be in harmony with the environment. The approach is contemporary with the desire to create a warm and elegant setting; stone, wood and leather recall the natural environment in which the ship is sailing.

Equipped with just 135 staterooms including 31 suites with balconies and outside views, Le Commandant-Charcot welcomes you in an intimate and refined atmosphere. Outstanding gastronomy in the two restaurants, relaxation in the indoor pool surrounded by its winter garden, relaxation in the well-being area with sauna and Snow Room... Like on a private yacht, each of our guests is unique.

PUBLIC AREAS

Le Commandant-Charcot has many common areas that are designed and equipped to meet all of your needs while preserving the intimacy of each passenger.

A 177 m² reception area includes: A reception/concierge desk, An expeditions desk, The ship's administrative services, The sales office, manned by our Hospitality & Travel Manager officer, Our boutique which sells clothing, jewellery, beauty products, postcards and various accessories, The image & photo desk.

The different lounges: A 302 m² main lounge including a 28 m² cigar lounge, a tea corner and a bar, with live music on selected evenings, A 400 m² panoramic bar and lounge, An open-air Bar.

The recreation spaces

Fitness & Beauty Corner: Fitness room: Elliptic, running machines, bicycles...

Beauty Corner: Hairdresser, Massage rooms, Sauna, Snow Room, Nail Shop.

Pool area: Indoor Pool and winter garden - Outdoor Pool

Theatre: Capacity: 270-276 - Main show room for conferences and live entertainment on selected evenings - State-of-the-art audio and video technology.

Leisure area: Public areas - Library - Medical centre.

16 Zodiac®.



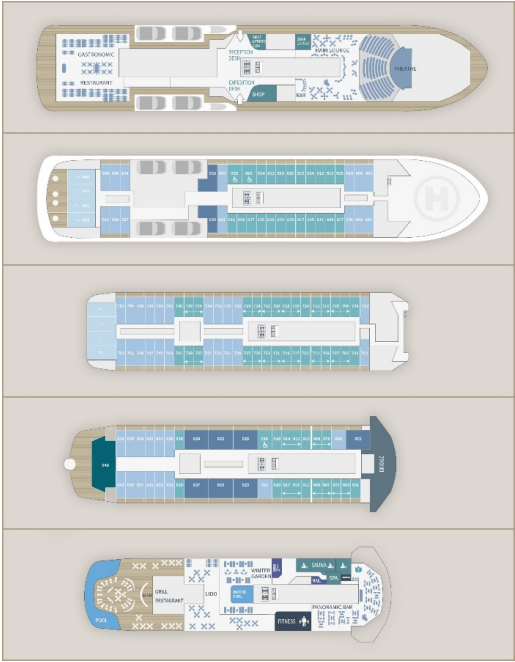
16 Zodiac®.



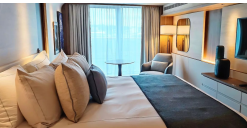
Wild Earth Travel
Small Ships, Big Adventures

wildearth-travel.com info@wildearth-travel.com

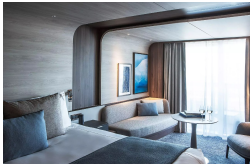
INSIDE YOUR SHIP



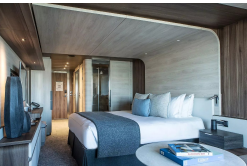
Deluxe Suite Deck 6



Deluxe Suite Deck 7



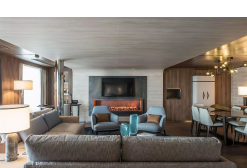
Deluxe Suite Deck 8



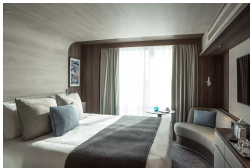
Grand Prestige Suite



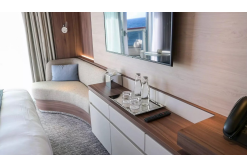
Owner's Suite



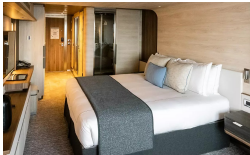
Prestige Stateroom Deck 6



Prestige Stateroom Deck 7



Prestige Stateroom Deck 8





Wild Earth Travel

Small Ships, Big Adventures



wildearth-travel.com

info@wildearth-travel.com

PRICING

11-Sep-2026 to 26-Sep-2026

Prestige Stateroom Deck 6	68900 AUD pp
Prestige Stateroom Deck 7	70240 AUD pp
Prestige Stateroom Deck 8	71600 AUD pp
Deluxe Suite Deck 6	73620 AUD pp
Deluxe Suite Deck 7	76980 AUD pp
Deluxe Suite Deck 8	79670 AUD pp
Prestige Suite Deck 7	102540 AUD pp
Prestige Suite Deck 8	105920 AUD pp
Grand Prestige Suite	109280 AUD pp
Privilege Suite Deck 8	116010 AUD pp
Suite Duplex	159750 AUD pp
Owner's Suite	221990 AUD pp

ADDITIONAL CHARGES:

Port Taxes 1110 AUD pp



Wild Earth Travel
Small Ships, Big Adventures

0800 945 3327 (within New Zealand) | +64 (0) 3 365 1355 | **1800 107 715** (within Australia)

info@wildearth-travel.com | **wildearth-travel.com**



Wild Earth Travel

Small Ships, Big Adventures

wildearth-travel.com

info@wildearth-travel.com

SPECIAL OFFERS

Online prices reflect the current brochure fare savings of up to 30%. Prices may change based on demand. Terms and conditions apply. This special offer is subject to availability. Please contact us for more details.



Wild Earth Travel

Small Ships, Big Adventures

0800 945 3327 (within New Zealand) | +64 (0) 3 365 1355 | **1800 107 715** (within Australia)

info@wildearth-travel.com | **wildearth-travel.com**