

# Wild Earth Travel

*Small Ships, Big Adventures*

**wildearth-travel.com**

**info@wildearth-travel.com**

## TROPICAL INDONESIAN ODYSSEY - FROM BALI TO DARWIN IN LUXURY

Over 13 days, fall under the spell of the beauty and richness of the Indonesian archipelago and the northern shores of Australia. Aboard Le Soleal, take an exceptional expedition cruise with PONANT, sailing from island to island, from idyllic landscapes to unforgettable encounters.

From the aptly-named 'Island of Gods', you will make a first port of call at on the island of Sumbawa before arriving on mysterious Komodo, a small wild island whose national park is a UNESCO World Heritage Site. It is home among other things to the famous Komodo dragons, gigantic monitor lizards that can grow more than 3 metres long, that you will be able to see in their natural environment.

You will then sail to Flores, the flower island, followed by the Alor Archipelago, two destinations where the locals have successfully preserved their ancient, traditional way of life. After calling at the fabulous Barat Daya Islands, you will explore the Moluccas (Maluku Islands), known as "the Spice Islands", and make a stop on the island of Banda Neira, marked by Dutch and Portuguese influences.

Le Soleal will continue on to the Indonesian province of West Papua to give you the opportunity to admire the Kiti-Kiti Waterfall. Surrounded by lush vegetation, you will undoubtedly be tempted to swim or snorkel at the foot of this stunning natural site.

Then, you will sail to the heart of Triton Bay. Located within a

protected marine environment in the middle of the Coral Triangle, you will enjoy an unforgettable zodiac cruise through the spectacular rainforest-capped karst islands.

Before finishing your cruise in Darwin, you will sail to the Kai Islands, located in the heart of the Moluccas. These hidden jewels, surrounded by incredibly blue water, are home to some of Indonesia's most beautiful white sandy beaches.



dy beaches.

### ITINERARY

Day 1 BENOA, BALI

Wild Earth Travel

*Small Ships, Big Adventures*

**0800 945 3327** (within New Zealand) | +64 (0) 3 365 1355 | **1800 107 715** (within Australia)

info@wildearth-travel.com | **wildearth-travel.com**



# Wild Earth Travel

*Small Ships, Big Adventures*

**wildearth-travel.com**

**info@wildearth-travel.com**

of colours, intermingling the sparkling whites of the beaches, the deep blues of the coral-filled water and the soft greens of its pastures.

If it's a taste of exotic authenticity you're after, prepare to be spell-bound by the island of Bali, tucked away in the heart of the Indonesian archipelago. The beauty and diversity of its landscapes, the depth and richness of its cultural heritage and the plethora of activities on offer here make Bali a little slice of heaven on Earth. The island's southern coast enthralls with its white sand beaches, its picturesque little fishing villages such as Benoa, and its hills patchworked with terraced rice paddies further inland. Nicknamed 'the Island of Gods' for its sumptuous temples, Bali is the beating heart of Indonesian Hinduism.

## Day 2 BADAS, SUMBAWA

The port of Badas is part of the greater township of Sumbawa Besar, on the island of Sumbawa. Like most of Sumbawa the people hold their culture strong as a major part of their identity. The island has a strong influence from the Makassarese of Sulawesi, who over the centuries have introduced a lot of their culture into Sumbawa. Join your expedition team and local guides for a tour by bus to Pamulung Village where you will be welcomed by the head of the village and have the opportunity to witness first-hand the local traditions of rice pounding, weaving and also witness a wedding procession. Your visit will conclude with an exciting Sumbawa buffalo race, an event that will be held in honour of our visit.

## Day 3 KOMODO NATIONAL PARK & PINK BEACH, KOMODO NATIONAL PARK

Between the islands of Sumbawa and Flores, Komodo National Park welcomes you to discover its natural wonders. At the very heart of the Indonesian archipelago, the three islands that form it - Komodo, Rinca and Padar - owe their renown to the famous eponymous dragons, enormous lizards over two metres long, which live in its grassy savannah. This jagged and hilly volcanic territory belonging to the Sunda Islands is a UNESCO World Heritage Site because of its incredible terrestrial and marine biodiversity. Admire its palette

Imagine a pure blue sky with only a few cotton wool clouds lazily bobbing across it, a calm sea that gently laps against a beach where the soft sand is neither golden nor black, but a delicate powder pink... Pink Beach is one of just seven beaches on the planet where this very special pink sand can be seen. The distinct pink hue results from the mixture of calcareous white sand with the eroded deep red skeleton of the organ pipe coral. The fringing coral reef is in excellent condition, the waters are crystal clear and harbour colourful reef fish that can be found just a short distance from shore. Enjoy an afternoon ashore at Pink beach, one of the easiest places in the tropics to snorkel and explore nature's richest realm.

## Day 4 KOMODO NATIONAL PARK

Between the islands of Sumbawa and Flores, Komodo National Park welcomes you to discover its natural wonders. At the very heart of the Indonesian archipelago, the three islands that form it - Komodo, Rinca and Padar - owe their renown to the famous eponymous dragons, enormous lizards over two metres long, which live in its grassy savannah. This jagged and hilly volcanic territory belonging to the Sunda Islands is a UNESCO World Heritage Site because of its incredible terrestrial and marine biodiversity. Admire its palette of colours, intermingling the sparkling whites of the beaches, the deep blues of the coral-filled water and the soft greens of its pastures.

## Day 5 MAUMERE, FLORES

Floresians have an ancient culture stretching back millennia before the first arrival of Europeans in search of trade opportunities. Their history is shared through oral traditions and is recreated in song and dance. The mountainous terrain of Flores has preserved the diversity of cultures and Maumere serves as the capital of the Sikka district and main trading port. Few tourists make it to Maumere with most stopping at Labuan Bajo and heading west to the islands of Komodo. Consequently, Maumere has kept its charming atmosphere, an eclectic mix of a bustling trading town and a coastal paradise. Join your

Wild Earth Travel

*Small Ships, Big Adventures*

**0800 945 3327** (within New Zealand) | +64 (0) 3 365 1355 | **1800 107 715** (within Australia)

info@wildearth-travel.com | wildearth-travel.com





# Wild Earth Travel

*Small Ships, Big Adventures*

**wildearth-travel.com**

**info@wildearth-travel.com**

expedition team and local guides for a tour by local transport to the markets and tribal villages in the hinterland of Maumere.

## Day 6 KALABAH, ALOR

The unique culture of the Alorese continues among the Takpala indigenous group who have preserved their traditional architecture and ceremonies. The island of Alor is also known as the island of a Thousand Moko's. The Moko is a small bronze kettledrum which is believed to have originated from the Dong Son culture of Vietnam. However, it remains a mystery as to how these prehistoric Dong Son drums arrived in Alor. Local legend says that the Moko's were discovered buried in the ground, and indeed mokos are still being uncovered today. Join the expedition team and local guides for a tour by local transport to Takpala village, the Museum of a Thousand Mokos and the thriving main market of Kalabahi.

## Day 7 BARAT DAYA ISLANDS

If you are looking for exoticism and authenticity, then you will be captivated by the Barat Daya Islands, an Indonesian archipelago lying to the east of the Lesser Sunda Islands, bathed by the Banda Sea and surrounded by coral reefs. With their fine sandy beaches, marine environments, preserved nature and paddy fields, these islands in the Maluku archipelago are a real concentration of the beauty South-East Asia has to offer. A lush environment in which fauna and flora flourish. Notably, there are almost 162 different bird species including four endemic ones and three endangered ones.

## Day 8 BANDA NEIRA, MALUKU ISLANDS

From age-old traditional cultures and ancient vestiges, to coral reefs and lush green jungle... The attractions of the remote Banda archipelago seem endless. Better known as the legendary "Spice Islands" of the Ancient World, these small volcanic landmasses were the fabled prize of colonial powers for more than four centuries. Every colonial power of significance fought for control of

these ten small islands that today have become largely forgotten. Walking the streets of Banda Neira is a surreal experience as your eyes are drawn to the eclectic mix of Portuguese, Dutch and British architecture, the remnants of a rich and tumultuous history. It is without doubt the most historically significant and interesting of all the "Spice Islands".

## Day 9 KITIKITI WATERFALL, MOMMON

North of Triton Bay, in the Indonesian province of West Papua, lie the Bomberai Peninsula and Sebakor Bay. A real paradise for divers, this protected, authentic and very wild area boasts an exceptional biodiversity. Here, you will be able to admire the superb Kitikiti Waterfall where you could enjoy a swim or snorkel surrounded by lush nature, both on land and under water.

## Day 10 TRITON BAY, WEST PAPUA

Triton Bay is one of three regions in Indonesia's West Papua province that comprise the Bird's Head Seascape (the other two are Raja Ampat and Cenderawasih Bay), which is now considered by marine biologists to be the epicentre of the Coral Triangle. It contains more fish and coral species than anywhere else on the planet. Its unparalleled marine biodiversity and endemism, habitat richness, and relatively intact nature of its ecosystems are unique. Join your expedition team for a zodiac voyage through the spectacular rainforest capped karst islands. Later in the day enjoy the opportunity to explore the richness of the underwater realm.

## Day 11 KEI ISLANDS, MALUKU ISLANDS

The Kei Islands are blessed with kilometres of stunning, yet almost entirely empty, white-sand beaches and a deeply hospitable population. Beneath the mostly Christian facade, Kei culture is fascinatingly distinctive. Local history holds that ancestors of contemporary Kei islanders came from Bali, part of the expanding Hindu Majapahit kingdom from the western archipelago. Enjoy a

Wild Earth Travel

*Small Ships, Big Adventures*

**0800 945 3327** (within New Zealand) | +64 (0) 3 365 1355 | **1800 107 715** (within Australia)

info@wildearth-travel.com | **wildearth-travel.com**



day of swimming and snorkelling on an idyllic uninhabited picture postcard tropical island.

#### Day 12 AT SEA

During your journey at sea, make the most of the many services and activities on board. Treat yourself to a moment of relaxation in the spa or stay in shape in the fitness centre. Depending on the season, let yourself be tempted by the swimming pool or a spot of sunbathing. This journey without a port of call will also be an opportunity to enjoy the conferences or shows proposed on board, depending on the activities offered, or to do some shopping in the boutique or to meet the PONANT photographers in their dedicated space. As for lovers of the open sea, they will be able to visit the ship's upper deck to admire the spectacle of the waves and perhaps be lucky enough to observe marine species. A truly enchanted interlude, combining comfort, rest and entertainment.

#### Day 13 DARWIN

Darwin is located in Australia's Northern Territory which is also known as the "Top End". It is the capital city and the most populated town of the Northern Territory. Darwin is a beautiful tropical city, a melting pot of people and cultures, over 50 different cultures live and work side by side that prides itself in its unique and friendly laid-back lifestyle. Come discover the town's still recent history through its emblematic buildings such as the new Parliament House opened in 1994, a magnificent example of tropical architecture or Admiralty House declared heritage place, a tropical-style home elevated on stilts that has survived two cyclones and numerous air raids.

#### Please note:

Itineraries are subject to change.



# Wild Earth Travel

*Small Ships, Big Adventures*

**wildearth-travel.com**

**info@wildearth-travel.com**

## YOUR SHIP: LE JACQUES CARTIER

**YOUR SHIP:** Le Jacques Cartier

**VESSEL TYPE:** Luxury

**LENGTH:**

**PASSENGER CAPACITY:** 92 cabins

**BUILT/REFURBISHED:** 2018/2019

Featuring innovative and environmentally-friendly equipment, elegantly designed staterooms, spacious suites with large windows, and lounge areas that open onto the outside, this new limited-capacity yacht boasting just 92 staterooms and suites will offer you a truly unique cruising experience.

As the sixth ship in a new series that remains true to the Ponant spirit, Le Jacques Cartier will embody the unique atmosphere that is the cruise line's hallmark: a subtle blend of refinement, intimacy and comfort.

Aboard this ship that flies the French flag, you will experience the incomparable pleasure of an intimate cruise, with the possibility of exploring an ever-increasing range of destinations in an ethnic-chic ambiance with luxury service.

Experience a luxurious setting where the accent is on authenticity and passion for travel.

### RESTAURANTS

As it is an essential part of French culture, gastronomy will naturally have pride of place aboard this new ship.

To the back of Deck 4, you will find a 260 m<sup>2</sup> panoramic restaurant which can accommodate all of our passengers in a single sitting. Designed differently to that on our other ships, this

dining area, which opens onto the outside, will have a buffet of salads, desserts and cheeses at your disposal. Our discreet and attentive crew will provide table service for hot meals.

In a relaxed atmosphere, an outdoor grill on Deck 3 will serve grilled meats with a variety of salads and desserts.

### PUBLIC AREAS

Le Jacques Cartier has many common areas that are designed and equipped to meet all of your needs while preserving the intimacy of each passenger.

A 140 m<sup>2</sup> reception area includes:

A reception/concierge desk,

An excursions desk,

The ship's administrative services,

The sales office, manned by our Guest Relations Officer,

Our 50 m<sup>2</sup> boutique which sells clothing, jewellery, beauty products, postcards and various accessories,

Toilets accessible to passengers with reduced mobility.

A new hydraulic platform with adjustable height provides:

Easier boarding than on any other cruise ship,

Easier Zodiac embarkation and disembarkation for expeditions,

Easier access to the sea for swimming and practising various water sports such as kayaking or paddle-boarding.

A pool deck offering:

A pool with a panoramic view, equipped with a counter-current swimming system,

A pleasant solarium,

An outdoor bar and lounge with armchairs and sofas.

A 200 m<sup>2</sup> main lounge which can accommodate all of our passengers to share convivial moments and to host activities

Wild Earth Travel

*Small Ships, Big Adventures*

**0800 945 3327** (within New Zealand) | +64 (0) 3 365 1355 | **1800 107 715** (within Australia)

info@wildearth-travel.com | wildearth-travel.com



# Wild Earth Travel

*Small Ships, Big Adventures*

**wildearth-travel.com**

**info@wildearth-travel.com**

organised during the day or evening.

Lastly, a theatre that seats 188, equipped with:

The latest sound and lighting technology,

A LED wall as the stage backdrop, for the projection of high-resolution images and videos.



and videos.

**Wild Earth Travel**

*Small Ships, Big Adventures*

**0800 945 3327** (within New Zealand) | +64 (0) 3 365 1355 | **1800 107 715** (within Australia)

info@wildearth-travel.com | **wildearth-travel.com**

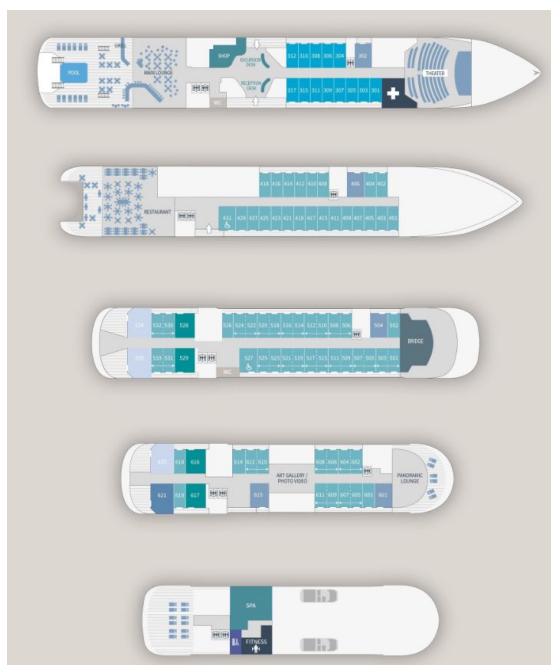
# Wild Earth Travel

*Small Ships, Big Adventures*

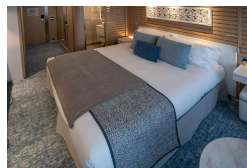
[wildearth-travel.com](http://wildearth-travel.com)

[info@wildearth-travel.com](mailto:info@wildearth-travel.com)

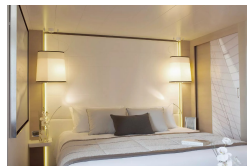
## INSIDE YOUR SHIP



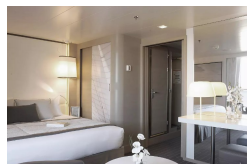
### DELUXE STATEROOM



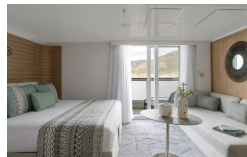
DeLuxe Stateroom



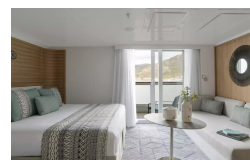
Deluxe Suite



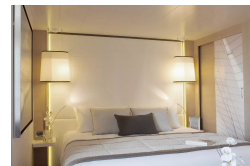
Deluxe Suite Deck 5



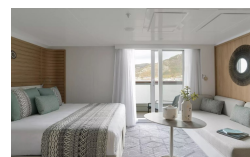
### DELUXE SUITE



Deluxe Stateroom



Deluxe Suite Deck 4



Deluxe Suite Deck 6

Wild Earth Travel

*Small Ships, Big Adventures*

0800 945 3327 (within New Zealand) | +64 (0) 3 365 1355 | 1800 107 715 (within Australia)

[info@wildearth-travel.com](mailto:info@wildearth-travel.com) | [wildearth-travel.com](http://wildearth-travel.com)

# Wild Earth Travel

*Small Ships, Big Adventures*

**wildearth-travel.com**

**info@wildearth-travel.com**

## PRICING

### 20-Jun-2025 to 02-Jul-2025

Superior Stateroom	12670 AUD pp
DeLuxe Stateroom	13740 AUD pp
Prestige Stateroom - Deck 4	15270 AUD pp
Prestige Stateroom - Deck 5	16040 AUD pp
Prestige Stateroom - Deck 6	16950 AUD pp
Deluxe Suite	23710 AUD pp
Prestige Suite - Deck 5	32140 AUD pp
Prestige Suite - Deck 6	33830 AUD pp
Owner's Suite	38890 AUD pp

### 01-Oct-2025 to 13-Oct-2025

Superior Stateroom	12670 AUD pp
DeLuxe Stateroom	13740 AUD pp
Prestige Stateroom - Deck 4	15270 AUD pp
Prestige Stateroom - Deck 5	16040 AUD pp
Prestige Stateroom - Deck 6	16950 AUD pp
Deluxe Suite	23710 AUD pp
Prestige Suite - Deck 5	32140 AUD pp
Prestige Suite - Deck 6	33830 AUD pp
Owner's Suite	38890 AUD pp

DELUXE STATEROOM	13560 AUD pp
PRESTIGE STATEROOM DECK 4	14280 AUD pp
PRESTIGE STATEROOM DECK 5	14710 AUD pp
PRESTIGE STATEROOM DECK 6	15280 AUD pp
DELUXE SUITE	20520 AUD pp
Deluxe Suite Deck 5	20520 AUD pp
Deluxe Suite Deck 4	20520 AUD pp
Deluxe Suite Deck 6	20520 AUD pp
PRESTIGE SUITE DECK 5	22080 AUD pp
PRESTIGE SUITE DECK 6	22810 AUD pp
PRIVILEGE SUITE	23370 AUD pp
Privilege Suite Deck 6	23370 AUD pp
Grand Deluxe Suite Deck 6	24090 AUD pp
GRAND DELUXE SUITE	24090 AUD pp
OWNER'S SUITE	28130 AUD pp

### 17-Jun-2026 to 29-Jun-2026

Superior Stateroom	13820 AUD pp
Deluxe Stateroom	14990 AUD pp
Prestige Deck 4	16650 AUD pp
Prestige Deck 5	17500 AUD pp
Prestige Deck 6	18490 AUD pp
Deluxe Suite	25850 AUD pp
Prestige Deck 5 Suite	35050 AUD pp
Prestige Deck 6 Suite	36890 AUD pp
Owner's Suite	42410 AUD pp

Wild Earth Travel

*Small Ships, Big Adventures*

**0800 945 3327** (within New Zealand) | +64 (0) 3 365 1355 | **1800 107 715** (within Australia)

info@wildearth-travel.com | wildearth-travel.com





**Wild Earth Travel**  
*Small Ships, Big Adventures*

**wildearth-travel.com**      **info@wildearth-travel.com**

**ADDITIONAL CHARGES:**      **Port Taxes 890 AUD pp**



# Wild Earth Travel

*Small Ships, Big Adventures*

**wildearth-travel.com**

**info@wildearth-travel.com**

## SPECIAL OFFERS

Online prices reflect the current brochure fare savings of up to 30%. Prices may change based on demand. Terms and conditions apply. This special offer is subject to availability. Please contact us for more details.

Wild Earth Travel

*Small Ships, Big Adventures*

**0800 945 3327** (within New Zealand) | +64 (0) 3 365 1355 | **1800 107 715** (within Australia)

info@wildearth-travel.com | **wildearth-travel.com**