



WESTERN GALAPAGOS WILDLIFE & VOLCANIC WONDERS - B

The Western Galapagos Wildlife & Volcanic Wonders Itinerary B is a 6-day adventure through the diverse and captivating landscapes of the Galapagos Islands. Starting with a journey to Santa Cruz's lush highlands, the trip includes visits to Isabela's Tintoreras and wetlands, Moreno Point's lava fields, and the pristine ecosystems of Fernandina at Mangle and Espinoza Points. Each day is filled with activities like hiking, snorkeling, and panga rides, offering close encounters with unique wildlife such as giant tortoises, marine iguanas, penguins, sea turtles, and a myriad of bird species. The journey concludes at Black Turtle Cove, where guests navigate serene mangrove forests and reflect on their extraordinary experiences, leaving with a deeper appreciation for the delicate balance of the Galapagos ecosystems.



ITINERARY

Day 1 – Wednesday Takeoff to Baltra Airport & Santa Cruz Highlands

Arrive at Baltra airport and meet your naturalist guide. A bus ride takes you to the lush highlands to see Galapagos Giant tortoises and various bird species. Visit a lava tunnel to learn about the volcanic history of the islands.

Day 2 – Thursday Isabela Island: Tintoreras & Wetlands



0800 945 3327 (within New Zealand) | +64 (0) 3 365 1355 | **1800 107 715** (within Australia)

info@wildearth-travel.com | **wildearth-travel.com**



Wild Earth Travel

Small Ships, Big Adventures

wildearth-travel.com

info@wildearth-travel.com

spotting reef sharks, rays, and numerous bird species. Reflect on your journey before returning to the mainland.

Please note:

Itineraries are subject to change.

Explore Tintorerías isles teeming with wildlife, snorkeling with sea turtles, manta rays, and possibly Galapagos penguins. In the afternoon, visit Isabela's wetlands and Interpretation Center to see mangroves, flamingos, and other aquatic birds.

Day 3 – Friday Isabela Island: Moreno Point & Fernandina Island: Mangle Point

Visit Moreno Point's lava fields, brackish lagoons, and shorelines to see flamingos, marine iguanas, and penguins. In the afternoon, explore Fernandina's Mangle Point's mangrove ecosystem, snorkeling with sea turtles, rays, and tropical fish.

Day 4 – Saturday Fernandina Island: Espinoza Point & Isabela Island: Tagus Cove

Explore Espinoza Point's marine iguanas, sea lions, flightless cormorants, and nutrient-rich waters for snorkeling. In the afternoon, visit Tagus Cove, hike through Palo Santo forests, and snorkel with sea turtles and diverse fish species.

Day 5 – Sunday Santiago Island: Egas Port & Chinese Hat

Hike along Puerto Egas's coastline to see marine iguanas, sea lions, fur seals, and shorebirds. In the afternoon, explore the volcanic cone of Chinese Hat, snorkeling with reef sharks, and penguins.

Day 6 – Monday Santa Cruz Island: Black Turtle Cove

Navigate Black Turtle Cove's mangrove forests and serene water channels,

Wild Earth Travel

Small Ships, Big Adventures

wildearth-travel.com

info@wildearth-travel.com

YOUR SHIP: GALAXY

YOUR SHIP:	Galaxy
VESSEL TYPE:	Yacht
LENGTH:	35 meters
PASSENGER CAPACITY:	16
BUILT/REFURBISHED:	2007/2022

Live a unique experience and explore the Galapagos Islands aboard our renewed Galaxy Yacht Cruise, exclusivity and personalized service for your dreamed trip while exploring the Enchanted Islands.

RESTAURANT

Located on the main deck, where you can enjoy delicious and varied cuisine of national and international dishes, served as a menu and buffet. The options for vegetarians, vegans, gluten intolerant or others are to be informed before booking. With a capacity of accommodating 16 people, it also has a purified water station and hot drinks available 24 hours a day.

SOLARIUM

It is the ideal place to rest and relax in the lazy chairs, enjoying an incredible 360° view.

LOUNGE

Located on the main deck at the back of the boat, for your entertainment on board, the lounge has a TV, DVD player, small library and toy library. The windows give a beautiful light and a very appreciable view of the sea.

BAR

Located on the main deck, next to the lounge is the bar, where

you can enjoy different options of cocktails, national and international drinks, and local exotic juices.



tic juices.

Wild Earth Travel

Small Ships, Big Adventures

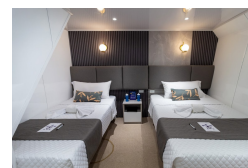
0800 945 3327 (within New Zealand) | +64 (0) 3 365 1355 | **1800 107 715** (within Australia)

info@wildearth-travel.com | **wildearth-travel.com**



info@wildearth-travel.com

INSIDE YOUR SHIP



Wild Earth Travel

Small Ships, Big Adventures

wildearth-travel.com

info@wildearth-travel.com

PRICING

30-Apr-2025 to 05-May-2025

Cabin	4000 USD pp
-------	-------------

14-May-2025 to 19-May-2025

Cabin	4000 USD pp
-------	-------------

28-May-2025 to 02-Jun-2025

Cabin	4000 USD pp
-------	-------------

11-Jun-2025 to 16-Jun-2025

Cabin	4000 USD pp
-------	-------------

25-Jun-2025 to 30-Jun-2025

Cabin	4000 USD pp
-------	-------------

09-Jul-2025 to 14-Jul-2025

Cabin	4000 USD pp
-------	-------------

23-Jul-2025 to 28-Jul-2025

Cabin	4000 USD pp
-------	-------------

06-Aug-2025 to 11-Aug-2025

Cabin	4000 USD pp
-------	-------------

20-Aug-2025 to 25-Aug-2025

Cabin	4000 USD pp
-------	-------------

03-Sep-2025 to 08-Sep-2025

Cabin	4000 USD pp
-------	-------------

17-Sep-2025 to 22-Sep-2025

Cabin	4000 USD pp
-------	-------------

01-Oct-2025 to 06-Oct-2025

Cabin	4000 USD pp
-------	-------------

15-Oct-2025 to 20-Oct-2025

Cabin	4000 USD pp
-------	-------------

29-Oct-2025 to 03-Nov-2025

Cabin	4000 USD pp
-------	-------------

12-Nov-2025 to 17-Nov-2025

Cabin	4000 USD pp
-------	-------------

26-Nov-2025 to 01-Dec-2025

Cabin	4000 USD pp
-------	-------------

10-Dec-2025 to 15-Dec-2025

Cabin	4000 USD pp
-------	-------------

24-Dec-2025 to 29-Dec-2025

Cabin	6000 USD pp
-------	-------------

07-Jan-2026 to 12-Jan-2026

Cabin	4350 USD pp
-------	-------------

21-Jan-2026 to 26-Jan-2026

Cabin	4350 USD pp
-------	-------------

04-Feb-2026 to 09-Feb-2026

Cabin	4350 USD pp
-------	-------------

18-Feb-2026 to 23-Feb-2026

Cabin	4350 USD pp
-------	-------------

Wild Earth Travel
Small Ships, Big Adventures

0800 945 3327 (within New Zealand) | +64 (0) 3 365 1355 | 1800 107 715 (within Australia)

info@wildearth-travel.com | wildearth-travel.com

Wild Earth Travel

Small Ships, Big Adventures

wildearth-travel.com

info@wildearth-travel.com

04-Mar-2026 to 09-Mar-2026

Cabin	4350 USD pp
-------	-------------

19-Aug-2026 to 24-Aug-2026

Cabin	6100 USD pp
-------	-------------

18-Mar-2026 to 23-Mar-2026

Cabin	4350 USD pp
-------	-------------

14-Oct-2026 to 19-Oct-2026

Cabin	6100 USD pp
-------	-------------

01-Apr-2026 to 06-Apr-2026

Cabin	6100 USD pp
-------	-------------

15-Apr-2026 to 20-Apr-2026

Cabin	6100 USD pp
-------	-------------

29-Apr-2026 to 04-May-2026

Cabin	6100 USD pp
-------	-------------

13-May-2026 to 18-May-2026

Cabin	6100 USD pp
-------	-------------

27-May-2026 to 01-Jun-2026

Cabin	6100 USD pp
-------	-------------

10-Jun-2026 to 15-Jun-2026

Cabin	6100 USD pp
-------	-------------

24-Jun-2026 to 29-Jun-2026

Cabin	6100 USD pp
-------	-------------

08-Jul-2026 to 13-Jul-2026

Cabin	6100 USD pp
-------	-------------

22-Jul-2026 to 27-Jul-2026

Cabin	6100 USD pp
-------	-------------

05-Aug-2026 to 10-Aug-2026

Cabin	6100 USD pp
-------	-------------

Wild Earth Travel
Small Ships, Big Adventures

0800 945 3327 (within New Zealand) | +64 (0) 3 365 1355 | **1800 107 715** (within Australia)

info@wildearth-travel.com | wildearth-travel.com



Wild Earth Travel

Small Ships, Big Adventures

wildearth-travel.com

info@wildearth-travel.com

PRICING

28-Oct-2026 to 02-Nov-2026

Cabin	6100 USD pp
-------	-------------

11-Nov-2026 to 16-Nov-2026

Cabin	6100 USD pp
-------	-------------

25-Nov-2026 to 30-Nov-2026

Cabin	6100 USD pp
-------	-------------

09-Dec-2026 to 14-Dec-2026

Cabin	6100 USD pp
-------	-------------

23-Dec-2026 to 28-Dec-2026

Cabin	9150 USD pp
-------	-------------



Wild Earth Travel

Small Ships, Big Adventures

0800 945 3327 (within New Zealand) | +64 (0) 3 365 1355 | **1800 107 715** (within Australia)

info@wildearth-travel.com | **wildearth-travel.com**