

Wild Earth Travel

Small Ships, Big Adventures



wildearth-travel.com

info@wildearth-travel.com

WILD GREENLAND ESCAPE EXPEDITION CRUISE

Venture to the fjord-laced coast of western Greenland, where Inuit communities perched at the edge of the Greenland ice cap carry on their timeless way of life. Explore archaeological sites and modern-day villages, and glide into breathtaking fjords by Zodiac or kayak as we explore this rugged coastline. Cruise amid the massive icebergs of the Ilulissat Icefjord and meet local people who live off the land and sea in the tradition of their ancestors.



ITINERARY

DAY 1 Boston, Massachusetts

Arrive in Boston, MA. Check into your hotel in the late afternoon. In the evening, join fellow travelers for a group dinner at the hotel.

Meals Included: Lunch, Dinner

DAY 2 Boston / Providence, Rhode Island / Kangerlussuaq, Greenland / Embark Ship

Wild Earth Travel

Small Ships, Big Adventures

0800 945 3327 (within New Zealand) | +64 (0) 3 365 1355 | 1800 107 715 (within Australia)

info@wildearth-travel.com | wildearth-travel.com



In the morning, transfer from Boston to Providence, Rhode Island for a charter flight to Kangerlussuaq on Greenland's western coast. Settle into your cabin and enjoy a scenic sailing through the dramatic gorge of the Kangerlussuaq Fjord, 120 miles in length, with its hanging glaciers and striking basalt ribbons.

Meals Included: Breakfast, Lunch, Dinner

DAY 3 Greenland's West Coast and Sisimiut

Cruise the length of Kangerlussuaq Fjord en route to Sisimiut. Dozens of deep fjords carve into Greenland's west coast, many with glaciers fed by the ice cap that covers 80 percent of the country. At Sisimiut, a former whaling port, enjoy your choice of guided walks through the sights and sounds of the village, including Dog Town or Sallinguit, a small island with centuries of history from Inuit culture through colonization and current day industry. In your free time, enjoy a local food tasting, visit the open-air museum, or explore the local artisan workshops.

Meals Included: Breakfast, Lunch, Dinner

DAY 4 Ilulissat and Disko Bay

Sail into Qeqertarsuup Tunua, also known as Disko Bay, and be welcomed by floating icebergs calved off the world's most active glacier, Sermeq Kujalleq. Enjoy an extraordinary cruise aboard local boats among towering icebergs of the UNESCO World Heritage-designated Ilulissat Icefjord. Visit the town of Ilulissat and hike into the Sermermiut Valley, once an Inuit settlement and now the home to a peaceful boardwalk overlooking the Icefjord. As we make our way north through Disko Bay, if ice conditions permit, we follow the inside passage of Disko Island and trace the shores of the Nuussuaq Peninsula as we keep watch for a glimpse of the Greenlandic Ice Sheet.

Meals Included: Breakfast, Lunch, Dinner

DAY 5 Uummannaq and Qilakitsoq

The village of Uummannaq sits on a tiny, yet dramatic island in the Uummannaq Fjord, dominated by a massive peak rising at its center. Visit the town's excellent community museum to see traditional clothing and tools, along with scenes of everyday life on these islands, and enjoy a stroll through the streets of this northern outpost. In the afternoon, cross the fjord to the site of Qilakitsoq, an important archaeological site for Greenlanders, where eight mummies, dating back to 1475, were discovered in 1972. These eight individuals, all extraordinarily well-preserved women and children, were Thule people, the ancestors of the modern Inuit. Their discovery was featured on the cover of the February 1985 issue of National Geographic magazine. Adventurous hikers may make their own respectful journey up to the final resting place of these ancestors.

Meals Included: Breakfast, Lunch, Dinner

DAY 6 Exploring Greenland's Fjords

We sail south to explore Greenland's fjords and look for Arctic foxes, whales, and a plethora of bird life. Paddle a kayak along the steep sides of the fjord, or ride a Zodiac to see the glacially carved landscape up close, as we cross back over the Arctic Circle.

Meals Included: Breakfast, Lunch, Dinner

DAY 7 Kangerlussuaq / Disembark Ship / Providence, Rhode Island / Boston, Massachusetts

Disembark in Kangerlussuaq and take a charter flight back to Providence, Rhode Island, for your flights home. A transfer will be provided from Providence back to Boston Logan Airport.

Meals Included: Breakfast, Lunch, Dinner



Wild Earth Travel
Small Ships, Big Adventures

wildearth-travel.com

info@wildearth-travel.com

Please Note:

Itineraries are subject to change.

Wild Earth Travel
Small Ships, Big Adventures

0800 945 3327 (within New Zealand) | +64 (0) 3 365 1355 | **1800 107 715** (within Australia)

info@wildearth-travel.com | **wildearth-travel.com**



Wild Earth Travel

Small Ships, Big Adventures



wildearth-travel.com

info@wildearth-travel.com

YOUR SHIP: NATIONAL GEOGRAPHIC EXPLORER

YOUR SHIP:	National Geographic Explorer
VESSEL TYPE:	Luxury Expedition
LENGTH:	108 meters
PASSENGER CAPACITY:	148 (single & twin cabins)
BUILT/REFURBISHED:	1982 / 2008

National Geographic Explorer is a state-of-the-art expedition ship. It is a fully stabilized, ice-class vessel, enabling it to navigate polar passages while providing exceptional comfort. It carries kayaks and a fleet of Zodiac landing craft. An Undersea Specialist operates a remotely operated vehicle (ROV) and sophisticated video equipment, extending access to the underwater world.

Public areas : Bistro Bar; Chart Room; Restaurant; Global Gallery; Library, Lounge with full service bar and state-of-the-art facilities for films, slideshows and presentations; Mud Room with lockers for expedition gear, and Observation Lounge. Our "Open Bridge" provides guests an opportunity to meet our Officers and Captain and learn about navigation.

Meals : Served in single seatings with unassigned tables for an informal atmosphere and easy mingling. Menu is international with local flair.

Cabins : A New Look for National Geographic Explorer Suites
National Geographic Explorer recently debuted updated suites, enhanced with the sleek, Scandinavian design that has become the hallmark of our polar fleet. Each of these elegant cabins now holds a Command Center, which allows guests to continue to

explore from the comfort of their suites with a set of tools that includes a barometer, a National Geographic Atlas, a television that broadcasts entertainment and ship navigation, a coffee maker, and multiple USB and universal electric ports for cameras and other devices. 81 outside cabins

All feature windows or portholes, private facilities, climate controls, hair dryers, and TV, plus Ethernet, Wi-Fi connections, and USB ports for mobile devices. Some cabins have balconies. Single cabins in Category SA and Category SB are located on the main deck and upper deck.

Expedition Equipment : Zodiac landing craft, kayaks, Remotely Operated Vehicle (ROV), hydrophone, SplashCam, underwater video camera, Crow's Nest remote controlled camera, video microscope, snorkeling gear.

Special Features : A full-time doctor, Undersea Specialist, LEX Photo Specialist and Video Chronicler, Internet Cafe and laundry.

Wellness: The vessel is staffed by two Wellness Specialists and features a glass enclosed Fitness Center, outdoor stretching area, two LEXspa treatment rooms and Sauna.



Wild Earth Travel

Small Ships, Big Adventures

0800 945 3327 (within New Zealand) | +64 (0) 3 365 1355 | 1800 107 715 (within Australia)

info@wildearth-travel.com | wildearth-travel.com



Wild Earth Travel
Small Ships, Big Adventures

wildearth-travel.com

info@wildearth-travel.com



and Sauna.

Wild Earth Travel
Small Ships, Big Adventures

0800 945 3327 (within New Zealand) | +64 (0) 3 365 1355 | **1800 107 715** (within Australia)

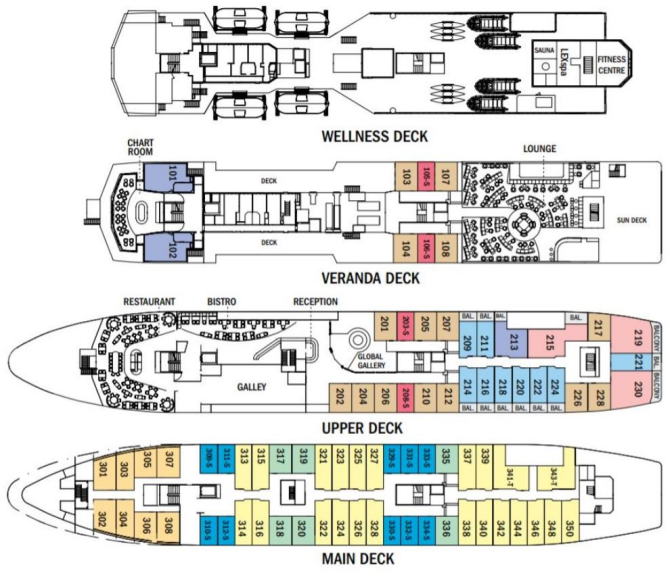
info@wildearth-travel.com | wildearth-travel.com



wildeath-travel.com

info@wildeath-travel.com

INSIDE YOUR SHIP



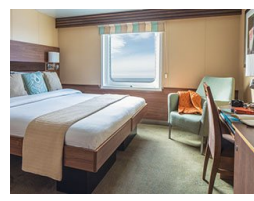
Category 1



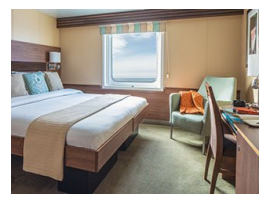
Category 2



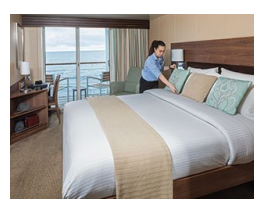
Category 3



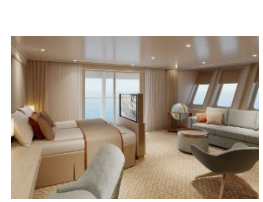
Category 4



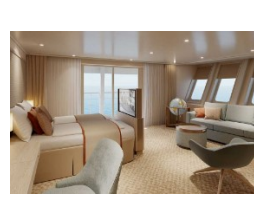
Category 5



Category 6



Category 7



Category SA (solo)



Wild Earth Travel

Small Ships, Big Adventures



wildearth-travel.com

info@wildearth-travel.com

PRICING

04-Aug-2025 to 10-Aug-2025

Category 1	9970 AUD pp
Category 2	11690 AUD pp
Category 3	12170 AUD pp
Category 4	13830 AUD pp
Category SA (solo)	14460 AUD pp
Category 5	14980 AUD pp
Category SB (solo)	15080 AUD pp
Category 6	17870 AUD pp
Category 7	20640 AUD pp

10-Aug-2025 to 16-Aug-2025

Category 1	9970 AUD pp
Category 2	11690 AUD pp
Category 3	12170 AUD pp
Category 4	13830 AUD pp
Category SA (solo)	14460 AUD pp
Category 5	14980 AUD pp
Category SB (solo)	15080 AUD pp
Category 6	17870 AUD pp
Category 7	20640 AUD pp

Wild Earth Travel

Small Ships, Big Adventures

0800 945 3327 (within New Zealand) | +64 (0) 3 365 1355 | 1800 107 715 (within Australia)

info@wildearth-travel.com | wildearth-travel.com