

Wild Earth Travel

Small Ships, Big Adventures

wildearth-travel.com

info@wildearth-travel.com

WILD WONDERS: CRUISE FROM PERU TO PANAMA

Embark on a captivating journey with the "Wild Wonders: cruise from Peru to Panama," an exhilarating luxury cruise that begins in Callao (Lima), Peru, and culminates in Panama City. Over ten days, this expedition takes you along South America's diverse Pacific coast, venturing through multiple countries from Peru's arid coastline to the lush tropics of Panama. This voyage offers the opportunity to explore remarkable locations. In Peru, discover Lima's rich colonial heritage and Isla Guanape's thriving wildlife. Continue to Salaverry, uncovering Peru's ancient pre-Incan past. Marvel at Ecuador's picturesque Isla de la Plata, rich with unique flora and fauna. Arriving in Colombia, you'll explore the verdant terrains of Utria National Park and the untamed Darien Jungle, before reaching the vibrant cities of Panama. Throughout this adventure, engage in a spectrum of activities designed to enrich your experience. Unwind at sea with expert-led lectures, captivating photography lessons, and luxurious spa treatments. Delight in guided tours of historical sites, ecological excursions in natural reserves, and cultural encounters with indigenous groups. This unforgettable journey marries discovery and relaxation along South America's breathtaking Pacific shoreline.



ITINERARY

Days 0 - 1 Pre Cruise & Callao (Lima)

Lima, Peru's capital, sits between the Pacific Ocean and Andes Mountains with the seaport of Callao. The bustling city's renowned culinary scene features a local favourite, ceviche. The UNESCO World Heritage historic centre features colonial-era architecture including Plaza Mayor and San Francisco Monastery. Nearby, the clay ruins of ceremonial pyramids, Huaca Pucllana and Huaca Huallamarca, offer a glimpse of the Inca civilization's history.

Wild Earth Travel

Small Ships, Big Adventures

0800 945 3327 (within New Zealand) | +64 (0) 3 365 1355 | **1800 107 715** (within Australia)

info@wildearth-travel.com | **wildearth-travel.com**



Wild Earth Travel

Small Ships, Big Adventures

wildearth-travel.com

info@wildearth-travel.com

Day 2 Isla Guanape

A breeding ground for seabirds and sea lions, Isla Guanape lies a few miles off the Peruvian coast. Consisting of four separate islands, the area was exploited for guano (for fertiliser). The islands are now protected, and the harvesting of guano is strictly regulated. A few building relics remain scattered around from the guano-mining days. Wildlife, including pelicans, boobies, Humboldt penguins and South American sea lions, live along the coastline.

Day 3 Salaverry

The port of Salaverry is the gateway to Peru's pre-Incan past, with the best of Peru's rich archaeological heritage. Surrounding well-preserved ruins include incredible relics of the 1st- to 8th-century Moche, like the mud pyramids of Huaca del Sol and Huaca de la Luna. Ancient Chan Chan, once housing 60,000 under the Chimu Empire, was the largest pre-Columbian city in the Americas. Nearby Trujillo features the 16th-century Plaza de Armas.

Day 4 Day at sea

Sea days are rarely dull. Take the time to sit back and let the world go by. The ship's observation decks provide stunning views of the passing ocean. A day at sea gives you the opportunity to mingle with other passengers and share your experiences of this incredible trip or head to our library which is stocked full of reference books. Get an expert's view in one of our on-board lectures or perhaps perfect your photography skills with invaluable advice from our onboard professional photographers.

Day 5 Isla de la Plata

Also known as the Silver Island, Isla de la Plata, though rumoured to hold Sir Francis Drake's buried treasure, has never yielded any such riches. Nevertheless, it is rich in biodiversity, comparable to the Galapagos Islands, with a similar dry, tropical environment. The island hosts a diverse array of

wildlife, including over 32 bird species like blue-footed boobies, waved albatrosses, pelicans, gannets and frigate birds.

Day 6 Manta

Day 7 Day at sea

Today as you sail, you'll bask in the endless comforts of your ship. From the deck, marvel at the dramatic sea views. Relax with a nurturing facial treatment or massage in the spa or delve into the ship's learning resources. Or, simply take refuge in your cabin and enjoy the opportunity to rest.

Day 8 Utria National Park, Ensenada de Utria

One of the world's wettest regions, with around 10,000 mm of rainfall per year, Utria National Park's forested area has rich and diverse fauna and flora with seven different mangrove species along its shore. The national park also overlaps the territory of the Embera indigenous people and fishing villages of Afro-Colombian people spread along the coastline. Both communities are strong conservationists and provide the local ecotourism services.

Day 9 Darien Jungle

The authentic Embera tribe live in the Darien Jungle, and rarely receive outside visitors. They rely on the jungle, using its plants for food, medicine and clothing. This is a unique opportunity to meet the indigenous people and discover their local customs. This visit offers an immersive look at an ancient culture still thriving in the Panamanian wilderness.

Day 10 Fuerte Amador (Panama City)

Fuerte Amador, the Panama Canal's Pacific terminus, lies at the end of a mile-long manmade causeway, built from the canal's waste materials. Nearby, Frank Gehry's colourful Biomuseo showcases Panama's biodiversity. Miraflores



Wild Earth Travel

Small Ships, Big Adventures

wildearth-travel.com

info@wildearth-travel.com

Locks' visitor centre tells the story of this legendary waterway. A short taxi ride away, modern Panama City has evolved around its two historic centres: the conquistador-era Panama Viejo and 17th-century Casco Viejo.

Please note:

Itineraries are subject to change.

Wild Earth Travel

Small Ships, Big Adventures

0800 945 3327 (within New Zealand) | +64 (0) 3 365 1355 | **1800 107 715** (within Australia)

info@wildearth-travel.com | **wildearth-travel.com**

Wild Earth Travel

Small Ships, Big Adventures

wildearth-travel.com

info@wildearth-travel.com

YOUR SHIP: VEGA

YOUR SHIP:	Vega
VESSEL TYPE:	Luxury Expedition / Cruise Ship
LENGTH:	115 metres
PASSENGER CAPACITY:	152
BUILT/REFURBISHED:	2020-2021-2022



Our brand new ship has been designed to journey to off the beaten path destinations and remote polar regions in style and comfort. The ship incorporates a PC5 ice-strengthened hull combined with extra-large stabilisers to make your journey as smooth as possible.

Sophisticated Elegance. We know how important outdoor space is, so our spacious, relaxing public spaces provide wide open, unobstructed views throughout the ship. The destination will always be in view.

Your Wellbeing. The safety & happiness of our guests is paramount to our 120-strong crew on board as well as our passionate expedition team who'll be serving up thrilling shore excursions and lasting memories.

Cabin Types. Our 76 cabins including 6 suites have all the amenities you will need to feel comfortable including dressing gowns, hairdryers, personal safes and minibars. Our stylish cabins all have desks, a dressing area and comfy seating. En suite bathrooms all feature glass-enclosed rain showers.

Wild Earth Travel

Small Ships, Big Adventures

0800 945 3327 (within New Zealand) | +64 (0) 3 365 1355 | **1800 107 715** (within Australia)

info@wildearth-travel.com | **wildearth-travel.com**

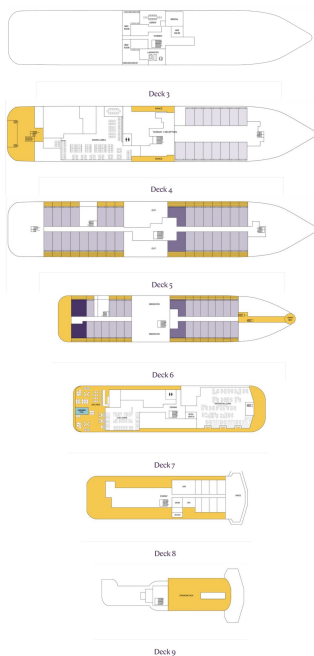
Wild Earth Travel

Small Ships, Big Adventures

wildearth-travel.com

info@wildearth-travel.com

INSIDE YOUR SHIP



Balcony D5



Balcony M5



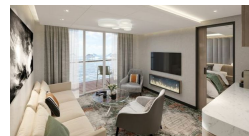
Oceanview D4



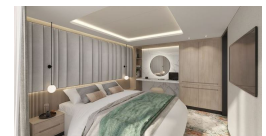
Oceanview M4



Premium Suite



Suite



Wild Earth Travel

Small Ships, Big Adventures

0800 945 3327 (within New Zealand) | +64 (0) 3 365 1355 | 1800 107 715 (within Australia)

info@wildearth-travel.com | wildearth-travel.com



Wild Earth Travel

Small Ships, Big Adventures

wildearth-travel.com

info@wildearth-travel.com

PRICING

07-Apr-2026 to 17-Apr-2026

Oceanview D4	14280 AUD pp
Oceanview M4	14980 AUD pp
Balcony D5	17180 AUD pp
Balcony M5	17880 AUD pp
Suite	24980 AUD pp
Premium Suite	28580 AUD pp

Wild Earth Travel
Small Ships, Big Adventures

0800 945 3327 (within New Zealand) | +64 (0) 3 365 1355 | **1800 107 715** (within Australia)

info@wildearth-travel.com | **wildearth-travel.com**