



## WILD WOOLLY & WOW WITH GLACIER BAY - ALASKA CRUISE

Join fellow adventurers on the most active back country itinerary that UnCruise offers. See areas that no other boats visit, and stretch your legs and imagination in all new areas.



### ITINERARY

#### DAY 1 Juneau Embarkation

After a day of exploring Alaska's Capital City of Juneau, you'll board the Wilderness Legacy just in time for a welcome cocktail or glass of Champagne before dinner. The captain and crew will introduce themselves and provide an overview of the adventure that awaits this week with a kick off toast! Listen for the whistles as the Wilderness Legacy departs. These horns and whistles come from Captain Dan's family collection...video on! (D)

#### DAY 2 Hobart Bay



Immerse yourself in the serene beauty of Hobart Bay. Start your day with a refreshing kayak excursion, gliding through calm waters or join our naturalists on an invigorating hike, uncovering the secrets of the local flora and fauna. In the afternoon, embark on a skiff ride for up-close views of the bay's stunning glaciers and a chance to spot eagles soaring overhead. For those skilled cyclists, try a short mountain bike excursion deep into the forest. As the day winds down, gather on deck for wildlife watching, an evening happy hour and photo share in the lounge or captivating presentation by our expert guides. (BLD)

### DAY 3 La Conte Glacier Fjord, Wilderness Area

Enjoy LeConte Glacier, noted as the southernmost tidewater glacier in the Northern Hemisphere, and an awe-inspiring landscape. Guests witness the glacier's imposing beauty up close, a highlight of the Alaskan wilderness.

No mega ships at this most amazing glacier, they are much too LARGE to enter the shallow entrance to this magical wilderness fjord. We will spend most of our day here, exploring by kayak, small boat and if conditions permit, by stand-up paddle board. We may even have a chance to go ashore and frolic amongst ice bergs stranded on the beach.

### DAY 4 Thomas Bay, Land of the Kushtaka

Wake near Cascade Creek in Thomas Bay. This bay is the quintessential playground for our guests and crew. Long flat hikes, steep elevation climbs, calm kayaking, and hikes to a glacial lake with the mighty Baird Glacier still calving ice into the lake may all be options today. Depending on tides, we may start the day near Cascade Creek or at Scenery Cove near Baird Glacier. Regardless, after lunch the boat will move to the opposite end of Thomas Bay for more adventures. This is an epic day for adventurers. Evening skiff tours and kayaks take in the pre dark hours when the sounds of the wilds beckon, or is that a Kushtaka I hear? (BLD)

### DAY 5 Bay of Pillars & Whale Watching

This day is devoted to seeking out the majestic marine life that inhabits the waters of the bay. The Bay of Pillars, situated within the Kuiu Wilderness of the Tongass National Forest in Alaska's Alexander Archipelago, is a picturesque and remote destination. Guests can expect to encounter a diverse array of sea life, including Humpbacks, Orcas, Steller Sea Lions, Porpoises, Dolphins, Pelagic birds, Seals, and other marine species. The cruise through these whale-rich waters offers a thrilling and intimate experience with nature. We may embark on a kayak excursions or a guided skiff tours to explore the hidden coves and the intricate coastline more closely, or you may wish to try a cold-water snorkel? (BLD)

### DAY 6 Brown Bear Search Near the Shores of Chichagof Island

Seek out the elusive Coastal Brown Bear along this rugged coastline. The East side of Chichagof Island includes three specific areas that have exceptionally good opportunities for sighting these wonderful creatures. Your Captain will use his knowledge to put you in the best spot, which changes regularly. This day may include the opportunity for hikes ashore, kayaking, skiff rides and hopefully watching brown bears from all our small boats and kayaks. The bear population is abundant in this area. The day concludes as we get underway, and guests share their experiences and photos with fellow travelers. (BLD)

### DAY 7 The Rarely Visted Outback of Glacier Bay National Park

Wake up in the Glacier Bay National Park's "Outback" - it's like waking up in a secret world! Our ship visits super cool spots, like: Fern Harbor, Dundas Bay, or No Name Cove near Excursion Inlet. You'll have so many things to choose from: kayaking, paddle boarding, skiff excursions (think mini-boat adventures!), hiking, and even strolling along the beach. It's like a playground of nature activities. As the day winds down, it's time for Captain's Dinner. But that's not all - you'll also get to watch a slideshow of all the amazing things you've done this week. It's like a movie starring you, the incredible explorer for kids and families. (BLD)



## DAY 8 Juneau Disembarkation

Welcome back to Juneau. Enjoy your last breakfast aboard. Check every nook and cranny of your cabin for all of your things and say farewell to the crew as we disembark, get that last family photo and wave goodbye until next time. (B)

### Please Note:

Passport required (non USA citizens). Itineraries are guidelines; variations in itinerary and the order of days may occur to maximize your experience.





**wildearth-travel.com**

**info@wildearth-travel.com**

## YOUR SHIP: WILDERNESS LEGACY

<b>YOUR SHIP:</b>	<b>Wilderness Legacy</b>
<b>VESSEL TYPE:</b>	<b>Small Ship</b>
<b>LENGTH:</b>	<b>192 feet</b>
<b>PASSENGER CAPACITY:</b>	
	<b>1984, renovated 2013 \- was the</b>
<b>BUILT/REFURBISHED:</b>	<b>SS Legacy</b>

Passenger: 86 guests

The one-of-a-kind Legacy sails to the farthest reaches, spinning yarns of adventure along the way - like the crew and guests having the time of their lives. Notable features of this one-of-a-kind vessel include beautiful carved wooden cabinetry, a spacious Owner's Suite, and the Sea Dragon (a portable launch platform for kayaks and paddle boards). She is ready for exploration, and has the most spacious viewing decks in the fleet. Wherever she sails she announces her arrival with the blow of a whistle.

Four decks are ready for guests' comfort and adventure. The bridge deck provides room for sunning, two hot tubs, and the open bridge, as well as the highest of the bow viewing areas wrapping around the front. The upper deck provides the middle bow viewing area. The lounge deck provides the luxurious indoor lounge and bar as well as the largest of the three bow viewing areas. Downstairs on the main deck guests enjoy gourmet meals in the elegant dining room.

The Lounge is the largest of the Alaska fleet, with plenty of room for spotting wildlife, sharing photos, and playing chess - all with

a cocktail or soda from the bar.

The Dining Room features open seating at set times. Breakfast, lunch and dinner are served plated at table. Unlimited beverages, alcoholic and non, are included in the price of the cruise. Vegetarian, vegan, gluten-free, and dairy-free options are always available, and dietary restrictions are happily accommodated if noted in advance.

### \_Onboard Amenities\_

Custom made sea dragon kayak launch platform; bow-mounted underwater camera; kayaks, paddleboards, inflatable skiffs, hiking poles; on-deck hot tubs; fitness equipment and yoga mats; DVD and book library.

The Legacy is the only boat in the fleet to offer an elevator. This elevator does not reach the bridge deck. While this makes her a comfortable choice for guests with mobility concerns, guests must still be able to embark and disembark via gangway and climb one flight of stairs. Explorer cabin 309 features a short ramp over the lip to get into the cabin and grab bars in the bathroom, but it is not ADA accessible.



**Wild Earth Travel**  
*Small Ships, Big Adventures*

**wildearth-travel.com**

**info@wildearth-travel.com**



accessible.

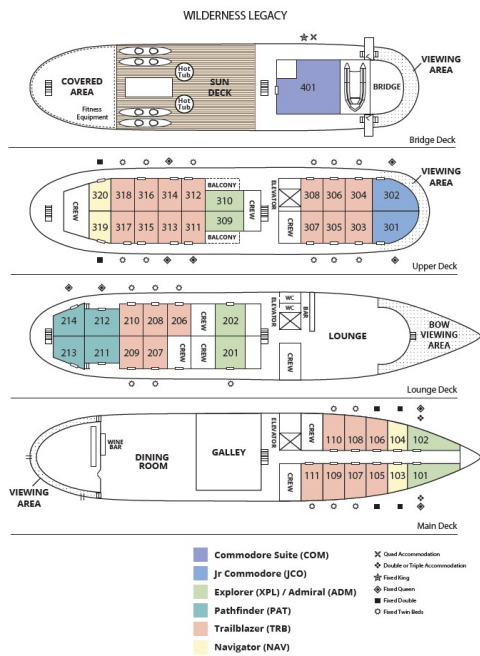


Wild Earth Travel  
*Small Ships, Big Adventures*

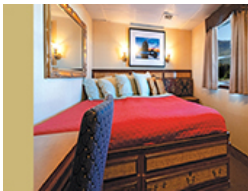
wildearth-travel.com

info@wildearth-travel.com

INSIDE YOUR SHIP



Admiral



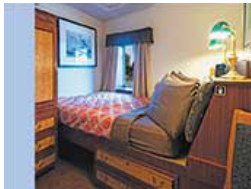
Commodore Suite



Jr Commodore Suite



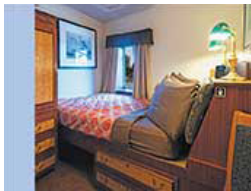
Navigator



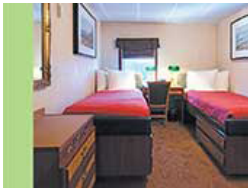
Pathfinder



Single Navigator



Trailblazer



Wild Earth Travel  
*Small Ships, Big Adventures*

0800 945 3327 (within New Zealand) | +64 (0) 3 365 1355 | 1800 107 715 (within Australia)

info@wildearth-travel.com | wildearth-travel.com





## PRICING

### 25-Apr-2025 to 02-May-2025

Navigator	4700 USD pp
Trailblazer	5200 USD pp
Pathfinder	5700 USD pp
Admiral	6300 USD pp
Jr Commodore Suite	7300 USD pp
Single Navigator	8100 USD pp
Commodore Suite	8600 USD pp
Adults in Tranquility Departure	0 pp

### 03-May-2025 to 10-May-2025

Navigator	5100 USD pp
Trailblazer	5700 USD pp
Pathfinder	6200 USD pp
Admiral	7000 USD pp
Jr Commodore Suite	8000 USD pp
Single Navigator	8900 USD pp
Commodore Suite	9500 USD pp
Adults in Tranquility Departure	0 pp

### 10-May-2025 to 17-May-2025

Navigator	5600 USD pp
Trailblazer	6200 USD pp
Pathfinder	6900 USD pp
Admiral	7700 USD pp
Jr Commodore Suite	8900 USD pp
Single Navigator	9800 USD pp
Commodore Suite	10500 USD pp

### 17-May-2025 to 24-May-2025

Navigator	5600 USD pp
Trailblazer	6200 USD pp
Pathfinder	6900 USD pp
Admiral	7700 USD pp
Jr Commodore Suite	8900 USD pp
Single Navigator	9800 USD pp
Commodore Suite	10500 USD pp



**wildearth-travel.com**

**info@wildearth-travel.com**

## PRICING

### 24-May-2025 to 31-May-2025

Navigator	5700 USD pp
Trailblazer	6300 USD pp
Pathfinder	7000 USD pp
Admiral	7800 USD pp
Jr Commodore Suite	9000 USD pp
Single Navigator	10000 USD pp
Commodore Suite	10800 USD pp

### 14-Jun-2025 to 21-Jun-2025

Navigator	6700 USD pp
Trailblazer	7400 USD pp
Pathfinder	8100 USD pp
Admiral	9100 USD pp
Jr Commodore Suite	10400 USD pp
Single Navigator	11700 USD pp
Commodore Suite	12500 USD pp

### 31-May-2025 to 07-Jun-2025

Navigator	5700 USD pp
Trailblazer	6300 USD pp
Pathfinder	7000 USD pp
Admiral	7800 USD pp
Jr Commodore Suite	9000 USD pp
Single Navigator	10000 USD pp
Commodore Suite	10800 USD pp

### 21-Jun-2025 to 28-Jun-2025

Navigator	6700 USD pp
Trailblazer	7400 USD pp
Pathfinder	8100 USD pp
Admiral	9100 USD pp
Jr Commodore Suite	10400 USD pp
Single Navigator	11700 USD pp
Commodore Suite	12500 USD pp
Kids in Nature Sailing	0 pp

### 07-Jun-2025 to 14-Jun-2025

Navigator	6700 USD pp
Trailblazer	7400 USD pp
Pathfinder	8100 USD pp
Admiral	9100 USD pp
Jr Commodore Suite	10400 USD pp
Single Navigator	11700 USD pp
Commodore Suite	12500 USD pp





**wildearth-travel.com**

**info@wildearth-travel.com**

## PRICING

### 28-Jun-2025 to 05-Jul-2025

Navigator	6700 USD pp
Trailblazer	7400 USD pp
Pathfinder	8100 USD pp
Admiral	9100 USD pp
Jr Commodore Suite	10400 USD pp
Single Navigator	11700 USD pp
Commodore Suite	12500 USD pp
Kids in Nature Sailing	0 pp

### 19-Jul-2025 to 26-Jul-2025

Navigator	6700 USD pp
Trailblazer	7400 USD pp
Pathfinder	8100 USD pp
Admiral	9100 USD pp
Jr Commodore Suite	10400 USD pp
Single Navigator	11700 USD pp
Commodore Suite	12500 USD pp

### 05-Jul-2025 to 12-Jul-2025

Navigator	6700 USD pp
Trailblazer	7400 USD pp
Pathfinder	8100 USD pp
Admiral	9100 USD pp
Jr Commodore Suite	10400 USD pp
Single Navigator	11700 USD pp
Commodore Suite	12500 USD pp

### 12-Jul-2025 to 19-Jul-2025

Navigator	6700 USD pp
Trailblazer	7400 USD pp
Pathfinder	8100 USD pp
Admiral	9100 USD pp
Jr Commodore Suite	10400 USD pp
Single Navigator	11700 USD pp
Commodore Suite	12500 USD pp

# Wild Earth Travel

*Small Ships, Big Adventures*



[wildearth-travel.com](http://wildearth-travel.com)

[info@wildearth-travel.com](mailto:info@wildearth-travel.com)

## PRICING

### 26-Jul-2025 to 02-Aug-2025

Navigator	6700 USD pp
Trailblazer	7400 USD pp
Pathfinder	8100 USD pp
Admiral	9100 USD pp
Jr Commodore Suite	10400 USD pp
Single Navigator	11700 USD pp
Commodore Suite	12500 USD pp
Kids in Nature Sailing	0 pp

### 02-Aug-2025 to 09-Aug-2025

Navigator	6700 USD pp
Trailblazer	7400 USD pp
Pathfinder	8100 USD pp
Admiral	9100 USD pp
Jr Commodore Suite	10400 USD pp
Single Navigator	11700 USD pp
Commodore Suite	12500 USD pp

### 09-Aug-2025 to 16-Aug-2025

Navigator	6700 USD pp
Trailblazer	7400 USD pp
Pathfinder	8100 USD pp
Admiral	9100 USD pp
Jr Commodore Suite	10400 USD pp
Single Navigator	11700 USD pp
Commodore Suite	12500 USD pp

### 16-Aug-2025 to 23-Aug-2025

Navigator	6700 USD pp
Trailblazer	7400 USD pp
Pathfinder	8100 USD pp
Admiral	9100 USD pp
Jr Commodore Suite	10400 USD pp
Single Navigator	11700 USD pp
Commodore Suite	12500 USD pp

### 23-Aug-2025 to 30-Aug-2025

Navigator	6700 USD pp
Trailblazer	7400 USD pp
Pathfinder	8100 USD pp
Admiral	9100 USD pp
Jr Commodore Suite	10400 USD pp
Single Navigator	11700 USD pp
Commodore Suite	12500 USD pp

# Wild Earth Travel

*Small Ships, Big Adventures*

[wildearth-travel.com](http://wildearth-travel.com)

[info@wildearth-travel.com](mailto:info@wildearth-travel.com)

## PRICING

### 30-Aug-2025 to 06-Sep-2025

Navigator	5700 USD pp
Trailblazer	6300 USD pp
Pathfinder	7000 USD pp
Admiral	7800 USD pp
Jr Commodore Suite	9000 USD pp
Single Navigator	10000 USD pp
Commodore Suite	10800 USD pp

### 06-Sep-2025 to 13-Sep-2025

Navigator	5600 USD pp
Trailblazer	6200 USD pp
Pathfinder	6900 USD pp
Admiral	7700 USD pp
Jr Commodore Suite	8900 USD pp
Single Navigator	9800 USD pp
Commodore Suite	10500 USD pp
Adults in Tranquility Departure	0 pp

### 13-Sep-2025 to 20-Sep-2025

Navigator	5100 USD pp
Trailblazer	5700 USD pp
Pathfinder	6200 USD pp
Admiral	7000 USD pp
Jr Commodore Suite	8000 USD pp
Single Navigator	8900 USD pp
Commodore Suite	9500 USD pp

### 25-Apr-2026 to 02-May-2026

Navigator	4700 USD pp
Trailblazer	5200 USD pp
Pathfinder	5700 USD pp
Admiral	6300 USD pp
Jr Commodore Suite	7300 USD pp
Single Navigator	8100 USD pp
Commodore Suite	8600 USD pp
Adults Only Departure	0 pp





**wildearth-travel.com**

**info@wildearth-travel.com**

## PRICING

### 02-May-2026 to 09-May-2026

Navigator	5100 USD pp
Trailblazer	5700 USD pp
Pathfinder	6200 USD pp
Admiral	7000 USD pp
Jr Commodore Suite	8000 USD pp
Single Navigator	8900 USD pp
Commodore Suite	9500 USD pp
Adults Only Departure	0 pp

### 09-May-2026 to 16-May-2026

Navigator	5600 USD pp
Trailblazer	6200 USD pp
Pathfinder	6900 USD pp
Admiral	7700 USD pp
Jr Commodore Suite	8900 USD pp
Single Navigator	9800 USD pp
Commodore Suite	10500 USD pp

### 16-May-2026 to 23-May-2026

Navigator	5600 USD pp
Trailblazer	6200 USD pp
Pathfinder	6900 USD pp
Admiral	7700 USD pp
Jr Commodore Suite	8900 USD pp
Single Navigator	9800 USD pp
Commodore Suite	10500 USD pp

### 23-May-2026 to 30-May-2026

Navigator	5700 USD pp
Trailblazer	6300 USD pp
Pathfinder	7000 USD pp
Admiral	7800 USD pp
Jr Commodore Suite	9000 USD pp
Single Navigator	10000 USD pp
Commodore Suite	10800 USD pp

### 30-May-2026 to 06-Jun-2026

Navigator	5700 USD pp
Trailblazer	6300 USD pp
Pathfinder	7000 USD pp
Admiral	7800 USD pp
Jr Commodore Suite	9000 USD pp
Single Navigator	10000 USD pp
Commodore Suite	10800 USD pp

# Wild Earth Travel

*Small Ships, Big Adventures*



[wildearth-travel.com](http://wildearth-travel.com)

[info@wildearth-travel.com](mailto:info@wildearth-travel.com)

## PRICING

### 06-Jun-2026 to 13-Jun-2026

Navigator	6700 USD pp
Trailblazer	7400 USD pp
Pathfinder	8100 USD pp
Admiral	9100 USD pp
Jr Commodore Suite	10400 USD pp
Single Navigator	11700 USD pp
Commodore Suite	12500 USD pp

### 13-Jun-2026 to 20-Jun-2026

Navigator	6700 USD pp
Trailblazer	7400 USD pp
Pathfinder	8100 USD pp
Admiral	9100 USD pp
Jr Commodore Suite	10400 USD pp
Single Navigator	11700 USD pp
Commodore Suite	12500 USD pp

### 20-Jun-2026 to 27-Jun-2026

Navigator	6700 USD pp
Trailblazer	7400 USD pp
Pathfinder	8100 USD pp
Admiral	9100 USD pp
Jr Commodore Suite	10400 USD pp
Single Navigator	11700 USD pp
Commodore Suite	12500 USD pp

### 27-Jun-2026 to 04-Jul-2026

Navigator	6700 USD pp
Trailblazer	7400 USD pp
Pathfinder	8100 USD pp
Admiral	9100 USD pp
Jr Commodore Suite	10400 USD pp
Single Navigator	11700 USD pp
Commodore Suite	12500 USD pp
Kids in Nature Sailing	0 pp

### 04-Jul-2026 to 11-Jul-2026

Navigator	6700 USD pp
Trailblazer	7400 USD pp
Pathfinder	8100 USD pp
Admiral	9100 USD pp
Jr Commodore Suite	10400 USD pp
Single Navigator	11700 USD pp
Commodore Suite	12500 USD pp

# Wild Earth Travel

*Small Ships, Big Adventures*



[wildearth-travel.com](http://wildearth-travel.com)

[info@wildearth-travel.com](mailto:info@wildearth-travel.com)

## PRICING

### 11-Jul-2026 to 18-Jul-2026

Navigator	6700 USD pp
Trailblazer	7400 USD pp
Pathfinder	8100 USD pp
Admiral	9100 USD pp
Jr Commodore Suite	10400 USD pp
Single Navigator	11700 USD pp
Commodore Suite	12500 USD pp

### 18-Jul-2026 to 25-Jul-2026

Navigator	6700 USD pp
Trailblazer	7400 USD pp
Pathfinder	8100 USD pp
Admiral	9100 USD pp
Jr Commodore Suite	10400 USD pp
Single Navigator	11700 USD pp
Commodore Suite	12500 USD pp
Adults Only Departure	0 pp

### 25-Jul-2026 to 01-Aug-2026

Navigator	6700 USD pp
Trailblazer	7400 USD pp
Pathfinder	8100 USD pp
Admiral	9100 USD pp
Jr Commodore Suite	10400 USD pp
Single Navigator	11700 USD pp
Commodore Suite	12500 USD pp
Kids in Nature Sailing	0 pp

### 01-Aug-2026 to 08-Aug-2026

Navigator	6700 USD pp
Trailblazer	7400 USD pp
Pathfinder	8100 USD pp
Admiral	9100 USD pp
Jr Commodore Suite	10400 USD pp
Single Navigator	11700 USD pp
Commodore Suite	12500 USD pp
Kids in Nature Sailing	0 pp



# Wild Earth Travel

*Small Ships, Big Adventures*



[wildearth-travel.com](http://wildearth-travel.com)

[info@wildearth-travel.com](mailto:info@wildearth-travel.com)

## PRICING

### 08-Aug-2026 to 15-Aug-2026

Navigator	6700 USD pp
Trailblazer	7400 USD pp
Pathfinder	8100 USD pp
Admiral	9100 USD pp
Jr Commodore Suite	10400 USD pp
Single Navigator	11700 USD pp
Commodore Suite	12500 USD pp

### 15-Aug-2026 to 22-Aug-2026

Navigator	6700 USD pp
Trailblazer	7400 USD pp
Pathfinder	8100 USD pp
Admiral	9100 USD pp
Jr Commodore Suite	10400 USD pp
Single Navigator	11700 USD pp
Commodore Suite	12500 USD pp

### 22-Aug-2026 to 29-Aug-2026

Navigator	6700 USD pp
Trailblazer	7400 USD pp
Pathfinder	8100 USD pp
Admiral	9100 USD pp
Jr Commodore Suite	10400 USD pp
Single Navigator	11700 USD pp
Commodore Suite	12500 USD pp
Adults Only Departure	0 pp

### 29-Aug-2026 to 05-Sep-2026

Navigator	5700 USD pp
Trailblazer	6300 USD pp
Pathfinder	7000 USD pp
Admiral	7800 USD pp
Jr Commodore Suite	9000 USD pp
Single Navigator	10000 USD pp
Commodore Suite	10800 USD pp

### 05-Sep-2026 to 12-Sep-2026

Navigator	5600 USD pp
Trailblazer	6200 USD pp
Pathfinder	6900 USD pp
Admiral	7700 USD pp
Jr Commodore Suite	8900 USD pp
Single Navigator	9800 USD pp
Commodore Suite	10500 USD pp



# Wild Earth Travel

*Small Ships, Big Adventures*



**wildearth-travel.com**

**info@wildearth-travel.com**

## PRICING

**12-Sep-2026 to 19-Sep-2026**

<b>Navigator</b>	<b>5100 USD pp</b>
<b>Trailblazer</b>	<b>5700 USD pp</b>
<b>Pathfinder</b>	<b>6200 USD pp</b>
<b>Admiral</b>	<b>7000 USD pp</b>
<b>Jr Commodore Suite</b>	<b>8000 USD pp</b>
<b>Single Navigator</b>	<b>8900 USD pp</b>
<b>Commodore Suite</b>	<b>9500 USD pp</b>

**ADDITIONAL CHARGES:**

**Port taxes/fees 375 USD pp**



**Wild Earth Travel**  
*Small Ships, Big Adventures*

**0800 945 3327** (within New Zealand) | +64 (0) 3 365 1355 | **1800 107 715** (within Australia)

info@wildearth-travel.com | **wildearth-travel.com**