

Wild Earth Travel

Small Ships, Big Adventures

wildearth-travel.com

info@wildearth-travel.com

WILDLIFE WONDERS: A JOURNEY THROUGH THE GALÁPAGOS

Experience nature at its wildest

The Galapagos Islands are a nature lovers paradise! Kayak, snorkel, and swim with opportunities to spot sea lions, sea turtles, penguins, and sharks. Prepare to be enchanted as you witness the extraordinary courtship display of the blue-footed booby, where the male showcases its striking blue webbed feet and performs an elaborate dance to attract a mate.

If the wildlife alone isn't enough to take your breath away, the stunning volcanic landscapes that set apart this archipelago will leave you speechless. Marvel at the volcanic terrain, vast lava fields, and dynamic processes that have shaped it over millions of years.

Immerse yourself in the city of Quito's captivating history. Uncover the architectural wonders and rich cultural heritage of Quito, the capital of Ecuador. Nestled at an altitude of 2,850 metres, this enchanting city was founded in the 16th century on the ruins of an Inca city. Admire the fusion of Spanish, Italian, Moorish, Flemish, and Indigenous art at iconic sites like La Compañía Church.

Wander through Quito's picturesque streets and immerse yourself in the fascinating history of the city with a visit to the Historic Centre—a designated UNESCO World Heritage Site recognized as the best-preserved in Latin America.

Visit the Charles Darwin Research Station

Pay a visit to the Charles Darwin Research Station and learn

about their successful efforts in restoring tortoise populations on different islands in the Galapagos archipelago.

Tour the enchanting prickly-pear cactus forest, see the giant tortoises, and learn about the unique and diverse wildlife that calls the Galapagos their home.



their home.

ITINERARY

Wild Earth Travel

Small Ships, Big Adventures

0800 945 3327 (within New Zealand) | +64 (0) 3 365 1355 | **1800 107 715** (within Australia)

info@wildearth-travel.com | **wildearth-travel.com**



Wild Earth Travel

Small Ships, Big Adventures

wildearth-travel.com

info@wildearth-travel.com

Day 1: Quito, Ecuador

The Adventure Begins

Welcome to Quito, Ecuador's picturesque capital city! Your adventure begins here.

Upon your independent arrival in the city, make your way to the hotel's welcome desk. Take the opportunity to get acquainted with your journey's host, settle in, and prepare for the exciting adventure ahead.

Day 2: Quito, Ecuador

Experience Quito's Colonial History and Flavours of the Andes

Discover the cultural richness of Quito, a UNESCO World Heritage city, with its historic neighbourhoods, outstanding museums, and tantalizing flavours.

Marvel at the breathtaking views from the Panecillo, a hill that rises on the southern limit of the Old Town, providing a privileged viewpoint of Quito's beauty. Take a stroll through the historic San Roque neighbourhood and catch a glimpse of the daily lives of the locals in this traditional barrio.

Journey to Independence Square, the main plaza that pulses with folklore, history, and the vibrant rhythm of everyday life. Be captivated by the architectural splendour of La Compañía Church, bathed in gold leaf from tip to toe, a true jewel of Ecuador. Step inside the iconic San Francisco Church and Monastery, where the Baroque church, extensive museum of Colonial religious art, and enchanting choir await your discovery.

Indulge in the flavours of the Andean region with a delectable lunch at the Middle of the World, where you can stand on the Equatorial Line and learn about the significant 1736 Geodesic Mission.

Later, savour a memorable dinner at Casa Gangotena, featuring their Cocina Mestiza, a fine example of Ecuadorian cuisine. This will be a signature Taste of Place event.

Day 3: Flight to Galápagos and North Seymour Island

Arrive in the Galapagos

Your adventure continues as you embark on a morning flight to the Galapagos,

touching down on Baltra Island. This flat island was chosen for its substrate and became the site of the airport in the 1940s.

Upon arrival, you'll board La Pinta, your home for the rest of the journey. Settle into your cabin after an introductory briefing and boat drill.

As we sail along the coast and interior of North Seymour Island, keep your binoculars handy to observe the abundant bird colonies, sea lions, and iguanas that call this area home. Your journey may also include opportunities for coastal exploration by panga (Zodiac), giving you a closer look at the unique ecology and geography of the region.

Day 4: Punta Vicente Roca, Isabela Island and Punta Espinoza, Fernandina Island

Witness Remarkable Geological Formations and Charming Wildlife

Join our expert guides as we set out on the pangas for an exploration of the coast, providing you with a unique and firsthand view of the area's remarkable geology. Depending on ocean conditions, get the opportunity to snorkel along the cliffs keeping a lookout for magnificent green sea turtles and a myriad of other marine animals.

Prepare to be amazed as we set foot on Fernandina, the archipelago's youngest and most pristine island. At Punta Espinoza, witness the remarkable juxtaposition of the barren landscape with the abundant wildlife. Look out for hawks, Galapagos penguins, and flightless cormorants, all against the backdrop of astounding volcanic vistas that dominate the surrounding landscapes.

Day 5: Urbina Bay and Tagus Cove, Isabela Island

Snorkel, Kayak, and Hike on Isabela Island

Journey to Urbina Bay on the western island of Isabela. Discover an underwater wonderland of vibrant corals and exquisite shells, while keeping an eye out for Galapagos land iguanas and giant tortoises. In the nearby Bolivar Channel, there are excellent opportunities to spot a variety of whale species.

Visit the secluded Tagus Cove, once favoured by pirates and whalers, for thrilling snorkelling or kayaking adventures. Conclude with a hike to the saltwater-filled Darwin Crater, embracing the untamed beauty of the surroundings.



Wild Earth Travel

Small Ships, Big Adventures

wildearth-travel.com

info@wildearth-travel.com

Day 6: Rábida Island and Cerro Dragon, Santa Cruz Island

Explore Rabida Island's Natural Wonders

Venture to Rabida Island's mesmerizing, red-coloured beach, where a plethora of wildlife awaits. Watch for marine iguanas, mockingbirds, yellow warblers, and various species of Darwin's finches. Opt to snorkel from the beach or explore the vibrant marine life through a glass-bottom boat cruise.

Journey to the north shore of Santa Cruz discovering Cerro Dragon, also known as Dragon Hill. Stroll around a brackish lagoon frequently visited by birds, and hike inland to get a beautiful view of the bay and the archipelago's western islands.

Day 7: Charles Darwin Research Station, Santa Cruz Island

Learn about Giant Tortoise Conservation

Explore the Charles Darwin Research Station, where remarkable efforts are underway to restore tortoise populations in the Galapagos. Wander through the prickly-pear cactus forest, learn about the facility's various research projects, and gain a deep understanding of the crucial conservation efforts taking place in the Galapagos region.

Enjoy a delicious poolside lunch at the Finch Bay Eco Hotel before heading to the Santa Cruz Island highlands to see Darwin's finches, endemic Scalesia trees, and giant tortoises in their natural habitat.

Day 8: Post Office Bay and Punta Cormorant, Floreana Island

Stroll White Sandy Beaches and Search for Flamingos and Sea Turtles

Immerse yourself in the wonders of Floreana Island. Hop on a panga for a thrilling ride along the north shore, arriving at the iconic Post Office Bay where you can participate in the intriguing tradition of letter exchange.

At Champion Islet, enjoy opportunities to kayak, snorkel, and ride the glass bottom boat for an up-close view of the island's marvels.

Take a peaceful stroll at Punta Cormorant, observing the magnificent greater flamingo--the largest living species of flamingo--in their brackish lagoon habitat.

Venture to the other side of the island where white sandy beaches and sea turtles await your visit.

Day 9: Baltra Island and flight to Quito, Ecuador

A Fond Farewell

Conclude your journey on Baltra Island, where we will disembark La Pinta and proceed to the airport for our charter flight back to Quito.

Arriving in Quito in the afternoon, we'll say our farewells in Ecuador's second-largest city.

Please note:

Itineraries are subject to change.

Wild Earth Travel

Small Ships, Big Adventures

wildearth-travel.com

info@wildearth-travel.com

YOUR SHIP: LA PINTA

YOUR SHIP:	La Pinta
VESSEL TYPE:	Small Ship
LENGTH:	63 metres
PASSENGER CAPACITY:	48 (in 24 cabins)
BUILT/REFURBISHED:	1983 / 2007 / 2020

The elegant, recently renovated La Pinta reflects the combined dreams shared by captains, crew, guides, and guests over the years. This beautiful 48-guest yacht features spacious cabins with floor-to-ceiling windows and sophisticated yet relaxed decks and lounges.

In one of the world's greatest marine environments, you can be sure your surroundings are front and center. From bow to stern, the elegant and sophisticated La Pinta recently received a full interior makeover and would steal the show anywhere less impressive. Instead, she's the perfect complement to the great outdoors. Floor-to-ceiling windows in the lounge showcase the views with a decor that nods to the nautical. Geared up for adventure play and wildlife, the yacht also has a fun-to-explore expedition room lined with maps and artwork, a canopied terrace, and an alfresco dining area. Her Ecuadorian crew exudes friendliness, fueled by pride in their vessel, the Galapagos Islands, and a desire to share them both. Because some good things are too good to keep secret.

Ship Amenities

Onboard Features include three public decks, on-deck hot tub, exercise room with fitness equipment, expedition room along

with an outdoor sky bar and observation lounge.

The lounge features floor to ceiling windows, the library features historical materials, and the aft covered alfresco dining area also features the hot tub and bar. Perfection.

The Dining Room features open seating. Meals are served at table at set times. Unlimited beverages, alcoholic and non, are included in the price of the cruise. Vegetarian options are always available. Dietary restrictions are happily accommodated with advance notice.

Cabin Features: Floor-to-ceiling view windows; air conditioning; universal docking station; hairdryer, conditioning shampoo, body wash; in-room safe deposit box



deposit box

Wild Earth Travel

Small Ships, Big Adventures

0800 945 3327 (within New Zealand) | +64 (0) 3 365 1355 | **1800 107 715** (within Australia)

info@wildearth-travel.com | **wildearth-travel.com**

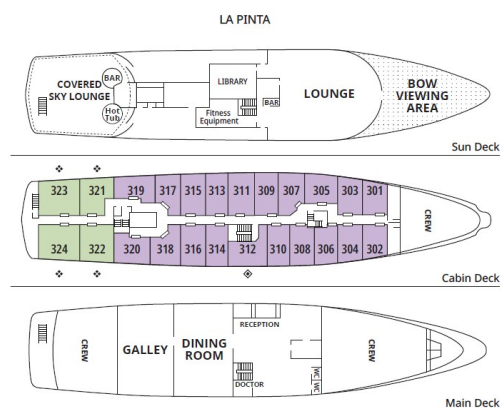
Wild Earth Travel

Small Ships, Big Adventures

wildearth-travel.com

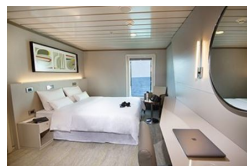
info@wildearth-travel.com

INSIDE YOUR SHIP



Admiral (ADM) ♦ Double or Triple Accommodation
Captain (CPT) ♦ Fixed Queen

Luxury Cabin/Captain Cabin



Luxury Plus Cabin/Admiral Cabin



Wild Earth Travel

Small Ships, Big Adventures

0800 945 3327 (within New Zealand) | +64 (0) 3 365 1355 | 1800 107 715 (within Australia)

info@wildearth-travel.com | wildearth-travel.com



Wild Earth Travel

Small Ships, Big Adventures



wildearth-travel.com

info@wildearth-travel.com

PRICING

11-Feb-2026 to 19-Feb-2026

Luxury Cabin/Captain Cabin	13995 USD pp
Luxury Plus Cabin/Admiral Cabin	14995 USD pp

Wild Earth Travel
Small Ships, Big Adventures

0800 945 3327 (within New Zealand) | +64 (0) 3 365 1355 | **1800 107 715** (within Australia)

info@wildearth-travel.com | **wildearth-travel.com**